

HALLIBURTON

WPX ENERGY ROCKY MOUNTAIN

**RWF 511-36
RULISON
Garfield County , Colorado**

Cement Surface Casing **12-Feb-2012**

Post Job Report

The Road to Excellence Starts with Safety

Sold To #: 300721	Ship To #: 2903404	Quote #:	Sales Order #: 9217405
Customer: WPX ENERGY ROCKY MOUNTAIN LLC-EBUS	Customer Rep: Oaks, Rick		
Well Name: RWF	Well #: 511-36	API/UWI #: 05-045-20775	
Field: RULISON	City (SAP): RIFLE	County/Parish: Garfield	State: Colorado
Lat: N 39.485 deg. OR N 39 deg. 29 min. 6.702 secs.	Long: W 107.84 deg. OR W -108 deg. 9 min. 36.09 secs.		
Contractor: NABORS 576	Rig/Platform Name/Num: NABORS 576		
Job Purpose: Cement Surface Casing			
Well Type: Development Well	Job Type: Cement Surface Casing		
Sales Person: MAYO, MARK	Srv Supervisor: SLAUGHTER, JESSE	MBU ID Emp #: 454315	

Job Personnel

HES Emp Name	Exp Hrs	Emp #	HES Emp Name	Exp Hrs	Emp #	HES Emp Name	Exp Hrs	Emp #
DOUT, JACOB J	4	430298	SLAUGHTER, JESSE Dean	4	454315	WOLFE, JON P	4	485217

Equipment

HES Unit #	Distance-1 way	HES Unit #	Distance-1 way	HES Unit #	Distance-1 way	HES Unit #	Distance-1 way
10783493	60 mile	10822007	60 mile	11360871	60 mile	11542767	60 mile
11583933	60 mile						

Job Hours

Date	On Location Hours	Operating Hours	Date	On Location Hours	Operating Hours	Date	On Location Hours	Operating Hours
2-12-2012	4	4						

TOTAL Total is the sum of each column separately

Job

Formation Name	Formation Depth (MD)	Top	Bottom	Form Type	Job depth MD	Job Depth TVD	Water Depth	Perforation Depth (MD)	From	To
				BHST	1127.2 ft	1127.2 ft				
							Wk Ht Above Floor			5. ft

Well Data

Description	New / Used	Max pressure psig	Size in	ID in	Weight lbm/ft	Thread	Grade	Top MD ft	Bottom MD ft	Top TVD ft	Bottom TVD ft

Sales/Rental/3rd Party (HES)

Description	Qty	Qty uom	Depth	Supplier
PLUG,CMTG,TOP,9 5/8,HWE,8.16 MIN/9.06 MA	1	EA		

Tools and Accessories

Type	Size	Qty	Make	Depth	Type	Size	Qty	Make	Depth	Type	Size	Qty	Make
Guide Shoe					Packer					Top Plug	9.625	1	HES
Float Shoe					Bridge Plug					Bottom Plug			
Float Collar					Retainer					SSR plug set			
Insert Float										Plug Container	9.625	1	HES
Stage Tool										Centralizers			

Miscellaneous Materials

Gelling Agt	Conc	Surfactant	Conc	Acid Type	Qty	Conc	%
Treatment Fld	Conc	Inhibitor	Conc	Sand Type	Size	Qty	

Fluid Data

Stage/Plug #: 1	Fluid #	Stage Type	Fluid Name	Qty	Qty uom	Mixing Density lbm/gal	Yield ft ³ /sk	Mix Fluid Gal/sk	Rate bbl/min	Total Mix Fluid Gal/sk

Stage/Plug #: 1

Stage/Plug #: 1									
Fluid #	Stage Type	Fluid Name	Qty	Qty uom	Mixing Density lbm/gal	Yield ft ³ /sk	Mix Fluid Gal/sk	Rate bbl/min	Total Mix Fluid Gal/sk
1	Fresh Water	FRESH WATER	20.00	bbl	8.33	.0	.0	4	
2	VersaCem Lead	VERSACEM (TM) SYSTEM (452010)	160.0	sacks	12.3	2.38	13.75	6	13.75
	13.75 Gal	FRESH WATER							
3	VersaCem Tail	VERSACEM (TM) SYSTEM (452010)	160.0	sacks	12.8	2.11	11.75	6	11.75
	11.75 Gal	FRESH WATER							
4	Displacement Fluid	FRESH WATER	85.2	bbl	8.34	.0	.0	8	
Calculated Values		Pressures		Volumes					
Displacement	85.2	Shut In: Instant		Lost Returns	NO	Cement Slurry	128	Pad	
Top Of Cement	25	5 Min		Cement Returns	25	Actual Displacement	85.2	Treatment	
Frac Gradient		15 Min		Spacers	20	Load and Breakdown		Total Job	233
Rates									
Circulating		Mixing	6	Displacement	8	Avg. Job	7		
Cement Left In Pipe	Amount	ft	Reason	Shoe Joint					
Frac Ring # 1 @	ID	Frac ring # 2 @	ID	Frac Ring # 3 @	ID	Frac Ring # 4 @	ID		
The Information Stated Herein Is Correct				Customer Representative Signature					

The Road to Excellence Starts with Safety

Sold To #: 300721	Ship To #: 2903404	Quote #:	Sales Order #: 9217405
Customer: WPX ENERGY ROCKY MOUNTAIN LLC-EBUS	Customer Rep: Oaks, Rick		
Well Name: RWF	Well #: 511-36	API/UWI #: 05-045-20775	
Field: RULISON	City (SAP): RIFLE	County/Parish: Garfield	State: Colorado
Legal Description:			
Lat: N 39.485 deg. OR N 39 deg. 29 min. 6.702 secs.		Long: W 107.84 deg. OR W -108 deg. 9 min. 36.09 secs.	
Contractor: NABORS 576	Rig/Platform Name/Num: NABORS 576		
Job Purpose: Cement Surface Casing		Ticket Amount:	
Well Type: Development Well	Job Type: Cement Surface Casing		
Sales Person: MAYO, MARK	Srv Supervisor: SLAUGHTER, JESSE	MBU ID Emp #: 454315	

Activity Description	Date/Time	Cht #	Rate bbl/ min	Volume bbl		Pressure psig		Comments
				Stage	Total	Tubing	Casing	
Call Out	02/12/2012 05:00							TD 1172 FT, TP 1127.26 FT, SHOE 44.4 FT, CSG 9 5/8 IN 32.3 LB/FT, HOLE 13 1/2 IN, MUD WT 9.9 PPG
Pre-Convoy Safety Meeting	02/12/2012 06:50							WITH ALL HES PERSONNEL
Crew Leave Yard	02/12/2012 07:00							
Arrive At Loc	02/12/2012 09:00							RIG WAS RUNNING CASING UPON HES ARRIVAL
Assessment Of Location Safety Meeting	02/12/2012 09:05							WITH ALL HES PERSONNEL
Other	02/12/2012 09:10							SPOT EQUIPMENT
Pre-Rig Up Safety Meeting	02/12/2012 09:20							WITH ALL HES PERSONNEL
Rig-Up Equipment	02/12/2012 09:30							
Pre-Job Safety Meeting	02/12/2012 10:15							WITH ALL PERSONNEL ON LOCATION
Start Job	02/12/2012 10:26							
Other	02/12/2012 10:26		2	2			40.0	FILL LINES WITH FRESH WATER
Test Lines	02/12/2012 10:28							TESTED LINES 4341 PSI PRESSURE HOLDING
Pump Spacer 1	02/12/2012 10:34		4	20			114.0	FRESH WATER
Pump Lead Cement	02/12/2012 10:43		6	67.8			172.0	160 SKS AT 12.3 PPG, 2.38 FT3/SK, 13.75 GAL/SK
Activity Description	Date/Time	Cht	Rate bbl/ min	Volume bbl		Pressure psig		Comments

Sold To #: 300721

Ship To #: 2903404

Quote #:

Sales Order #:

9217405

SUMMIT Version: 7.3.014

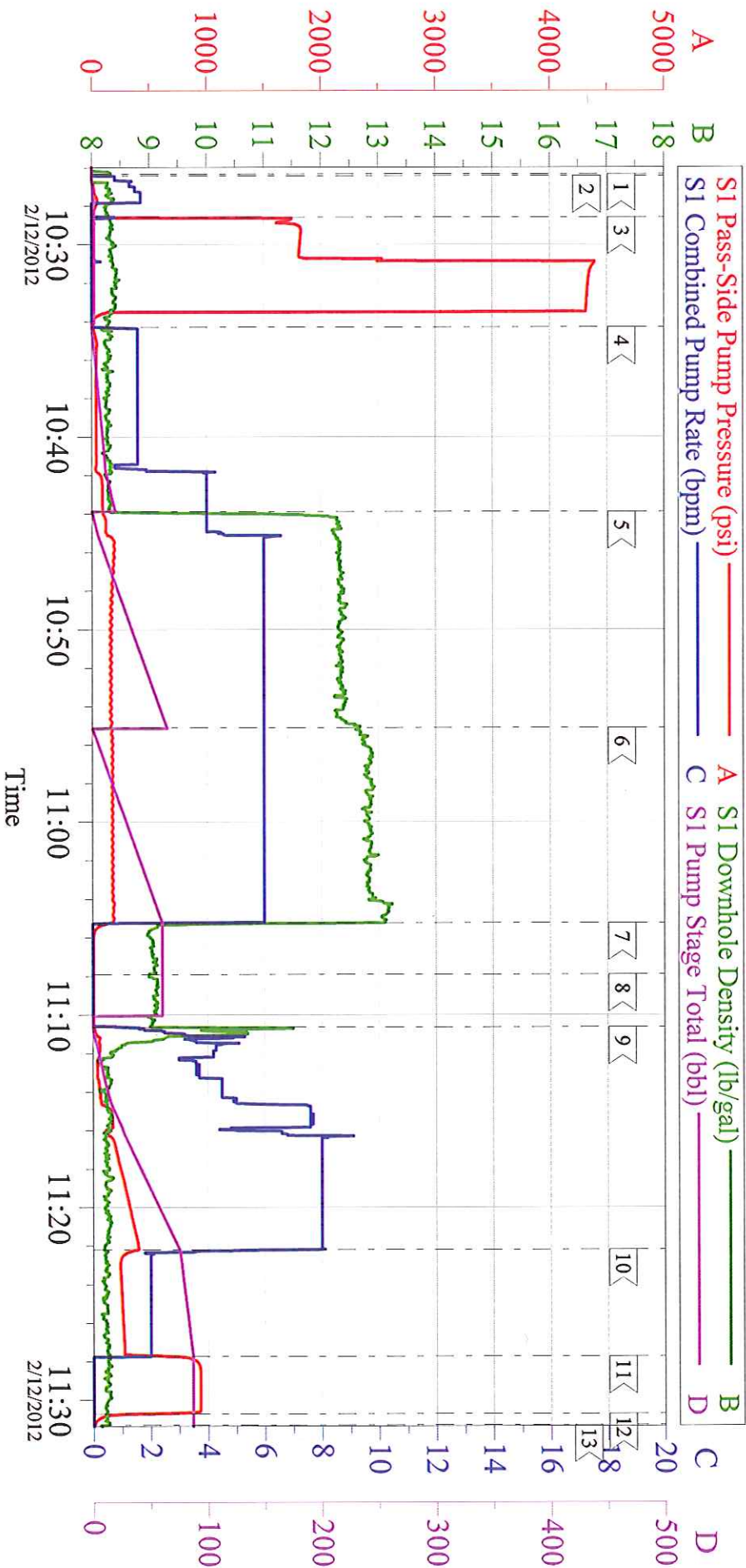
Friday, February 17, 2012 10:16:00

Cementing Job Log

		#		Stage	Total	Tubing	Casing	
Pump Tail Cement	02/12/2012 10:55		6	60.1			177.0	160 SKS AT 12.8 PPG, 2.11 FT3/SK, 11.75 GAL/SK
Shutdown	02/12/2012 11:05							
Drop Top Plug	02/12/2012 11:07							PLUG LAUNCHED
Pump Displacement	02/12/2012 11:10		8	75.2			388.0	FRESH WATER
Slow Rate	02/12/2012 11:22		2	10			270.0	SLOW RATE 10 BBLS PRIOR TO CALCULATED DISPLACEMENT
Bump Plug	02/12/2012 11:27		2		85.2		933.0	PLUG BUMPED
Check Floats	02/12/2012 11:30							FLOATS HOLDING. HES RETURNED 1 BBL H2O TO PUMP
End Job	02/12/2012 11:31							PIPE WAS STATIC DURING JOB, GOOD CIRCULATION THROUGHOUT JOB, HES RETURNED 25 BBL CEMENT TO SURFACE
Pre-Rig Down Safety Meeting	02/12/2012 11:35							WITH ALL HES PERSONNEL
Rig-Down Equipment	02/12/2012 11:40							
Pre-Convoy Safety Meeting	02/12/2012 12:50							WITH ALL HES PERSONNEL
Crew Leave Location	02/12/2012 13:00							
Comment	02/12/2012 13:01							THANK YOU FOR USING HALLIBURTON CEMENT DEPARTMENT. JESSE SLAUGHTER AND CREW.

WILLIAMS RWF 511-36

9 5/8 SURFACE



Local Event Log

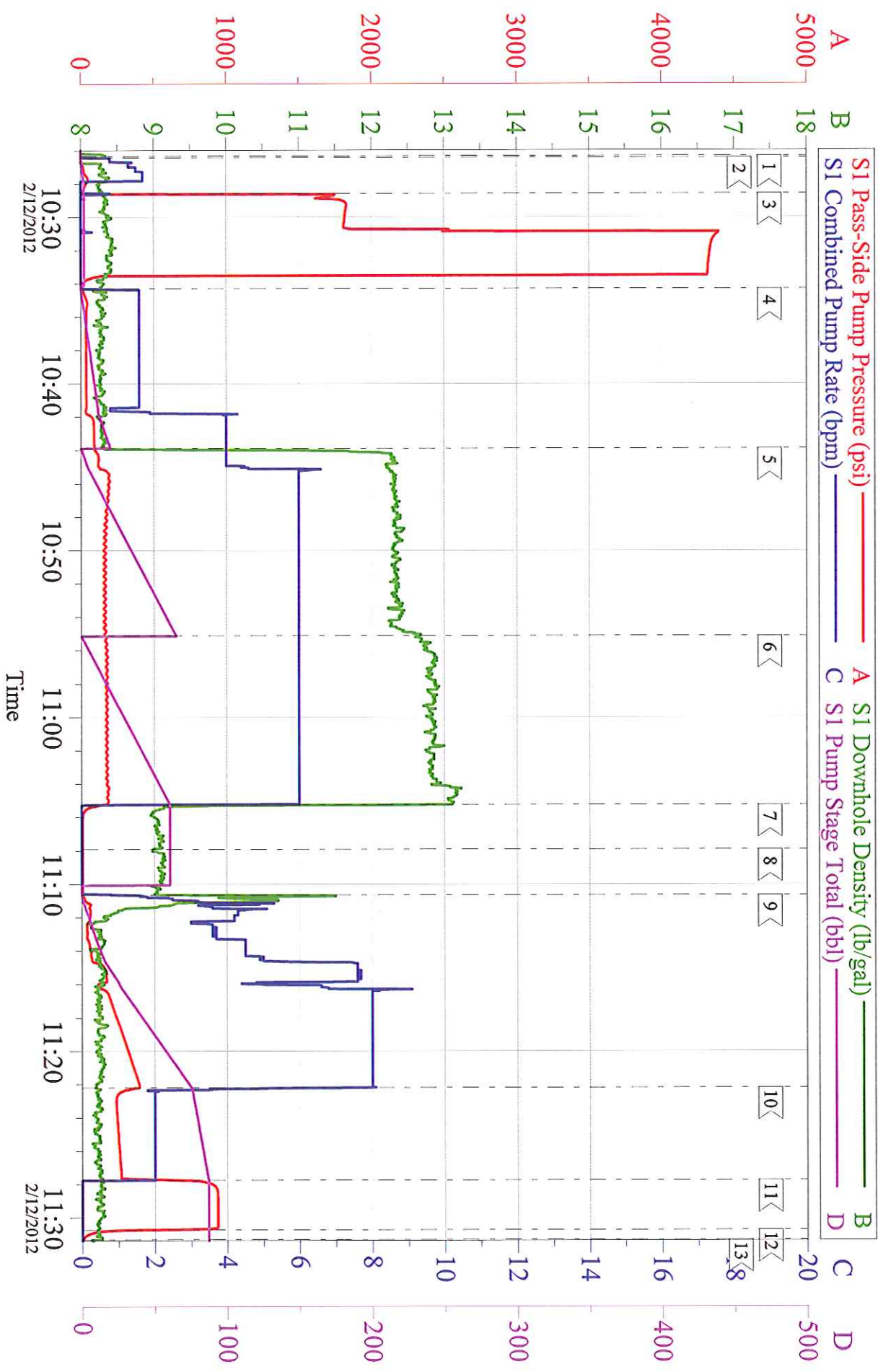
1 < START JOB	10:26:19	2 < PRIME LINES	10:26:26	3 < TEST LINES	10:28:35
4 < PUMP H2O SPACER	10:34:18	5 < PUMP LEAD CEMENT	10:43:53	6 < PUMP TAIL CEMENT	10:55:06
7 < SHUTDOWN	11:05:14	8 < DROP TOP PLUG	11:07:55	9 < PUMP DISPLACEMENT	11:10:39
10 < SLOW RATE	11:22:12	11 < BUMP PLUG	11:27:44	12 < CHECK FLOATS	11:30:43
13 < END JOB	11:31:18				

Customer: WILLIAMS
Well Description: RWF 511-36
Customer Rep: RICK OAKS

Job Date: 12-Feb-2012
Job Type: SURFACE
Cement Supervisor: JESSE SLAUGHTER

Sales Order #: 9217405
ADC Used: YES
Elite #1: JACOB DOUT

WILLIAMS RWF 511-36 9 5/8 SURFACE



Customer: WILLIAMS	Job Date: 12-Feb-2012	Sales Order #: 9217405
Well Description: RWF 511-36	Job Type: SURFACE	ADC Used: YES
Customer Rep: RICK OAKS	Cement Supervisor: JESSE SLAUGHTER	Elite #1: JACOB DOUT

HALLIBURTON

Water Analysis Report

Company: WILLIAMS PRODUCTION

Date: 2/12/2012

Submitted by: JESSE SLAUGHTER

Date Rec.: _____

Attention: LAB

S.O.# 9217405

Lease RWF

Job Type: SURFACE

Well # 511-36

Specific Gravity	<i>MAX</i>	<i>1</i>
pH	<i>8</i>	<i>6</i>
Potassium (K)	<i>5000</i>	<i>250 Mg / L</i>
Calcium (Ca)	<i>500</i>	<i>120 Mg / L</i>
Iron (FE2)	<i>300</i>	<i>0 Mg / L</i>
Chlorides (Cl)	<i>3000</i>	<i>0 Mg / L</i>
Sulfates (SO ₄)	<i>1500</i>	<i>UNDER 200 Mg / L</i>
Chlorine (Cl ₂)		<i>0 Mg / L</i>
Temp	<i>40-80</i>	<i>55 Deg</i>
Total Dissolved Solids		<i>200 Mg / L</i>

Respectfully: JESSE SLAUGHTER

Title: CEMENTING SUPERVISOR

Location: Grand Junction, CO

NOTICE:

This report is limited to the described sample tested. Any person using or relying on this report agrees that Halliburton shall not be liable for any loss or damage whether due to act or omission resulting from such report or its use.

Sales Order #: 9217405	Line Item: 10	Survey Conducted Date: 2/12/2012
Customer: WPX ENERGY ROCKY MOUNTAIN LLC-EBUS		Job Type (BOM): CMT SURFACE CASING BOM
Customer Representative: RICK OAKS		API / UWI: (leave blank if unknown) 05-045-20775
Well Name: RWF		Well Number: 511-36
Well Type: Development Well	Well Country: United States of America	
H2S Present: No	Well State: Colorado	Well County: Garfield

Dear Customer,

We hope that you were satisfied with the service quality of this job performed by Halliburton. It is the aim of our management and service personnel to deliver equipment and service of a standard unmatched in the service sector of the energy industry.

Please take the time to let us know if our performance met with your satisfaction. Please be as critical as possible to ensure we constantly improve our service. Your comments are of great value to us and are intended for the exclusive use of Halliburton.

CUSTOMER SATISFACTION SURVEY

CATEGORY	CUSTOMER SATISFACTION RESPONSE	
Survey Conducted Date	The date the survey was conducted	2/12/2012
Survey Interviewer	The survey interviewer is the person who initiated the survey.	JESSE SLAUGHTER (HB21762)
Customer Participation	Did the customer participate in this survey? (Y/N)	Yes
Customer Representative	Enter the Customer representative name	RICK OAKS
HSE	Was our HSE performance satisfactory? Circle Y or N	Yes
Equipment	Were you satisfied with our Equipment? Circle Y or N	Yes
Personnel	Were you satisfied with our people? Circle Y or N	Yes
Customer Comment	Customer's Comment	

CUSTOMER SIGNATURE

Sales Order #: 9217405	Line Item: 10	Survey Conducted Date: 2/12/2012
Customer: WPX ENERGY ROCKY MOUNTAIN LLC-EBUS		Job Type (BOM): CMT SURFACE CASING BOM
Customer Representative: RICK OAKS		API / UWI: (leave blank if unknown) 05-045-20775
Well Name: RWF		Well Number: 511-36
Well Type: Development Well	Well Country: United States of America	
H2S Present: No	Well State: Colorado	Well County: Garfield

KEY PERFORMANCE INDICATORS

General	
Survey Conducted Date The date the survey was conducted	2/12/2012

Cementing KPI Survey	
Type of Job Select the type of job Cementing or Non-Cementing	0
Select the Maximum Deviation range for this Job What is the largest deviation for the job you just completed? This may not be the maximum well deviation	Vertical
Total Operating Time (hours) Total Operating Hours Including Rig-up, Pumping, Rig-down. Enter in decimal format	4
HSE Incident/Accident Inquiry HSE Incident/Accident Inquiry. This could be recordable incidents only	No
Was the job purpose achieved? Was the job delivered correctly as per customer agreed design	Yes
Operating Hours (Pumping Hours) Total number of hours pumping fluid on this job. Enter in decimal format	1.5
Customer Non-Productive RI Time (hrs) Lost time due to Halliburton in the start, execution or completion of an ordered service or product or delays in a follow-on service. Enter in decimal format. 0 if none	0
Type of Rig Classification Job Was Performed Type Of Rig Classification Job Was Performed On	Drilling Rig (Portable)
Number Of JSAs Performed Number Of Jsas Performed	6
Number of Unplanned Shutdowns Unplanned shutdown is when injection stops for an period of time	0
Was this a Primary Cement Job (Yes / No)	Yes

Sales Order #: 9217405	Line Item: 10	Survey Conducted Date: 2/12/2012
Customer: WPX ENERGY ROCKY MOUNTAIN LLC-EBUS		Job Type (BOM): CMT SURFACE CASING BOM
Customer Representative: RICK OAKS		API / UWI: (leave blank if unknown) 05-045-20775
Well Name: RWF		Well Number: 511-36
Well Type: Development Well	Well Country: United States of America	
H2S Present: No	Well State: Colorado	Well County: Garfield

Primar <input type="checkbox"/> Cement Job <input type="checkbox"/> Casing <input type="checkbox"/> Liner <input type="checkbox"/> or Tie-back <input type="checkbox"/> <input type="checkbox"/>	
Did We Run Wiper Plugs? Did We Run Top And Bottom Casing Wiper Plugs <input type="checkbox"/>	Top
Mi in Density of Job Stayed in Design Density Range (0-100) Density Range defined as +/- 120 ppg Calculation: Total BBLs cement mixed at designed density divided by total BBLs of cement multiplied by 100	98
Was Automated Density Control Used? Was Automated Density Control (ADC) Used <input type="checkbox"/>	Yes
Pump Rate (percent) of Job Stayed At Design Pump Rate Pump Rate range defined as +/- 1 bbl/min Calculation: Total BBLs of fluid pumped at the designed rate divided by Total BBLs of fluid pumped multiplied by 100	98
Nbr of Remedial Sq Jobs Rqd Competition Number Of Remedial Square Feet Jobs Required After Primary Job Performed By Competition	0
Nbr of Remedial Plug Jobs Rqd HES Number Of Remedial Plug Jobs Needed After Primary Plug Pumped By HES	0
Nbr of Remedial Sq Jobs Rqd HES Number Of Remedial Square Feet Jobs Required After Primary Job Performed By HES	0