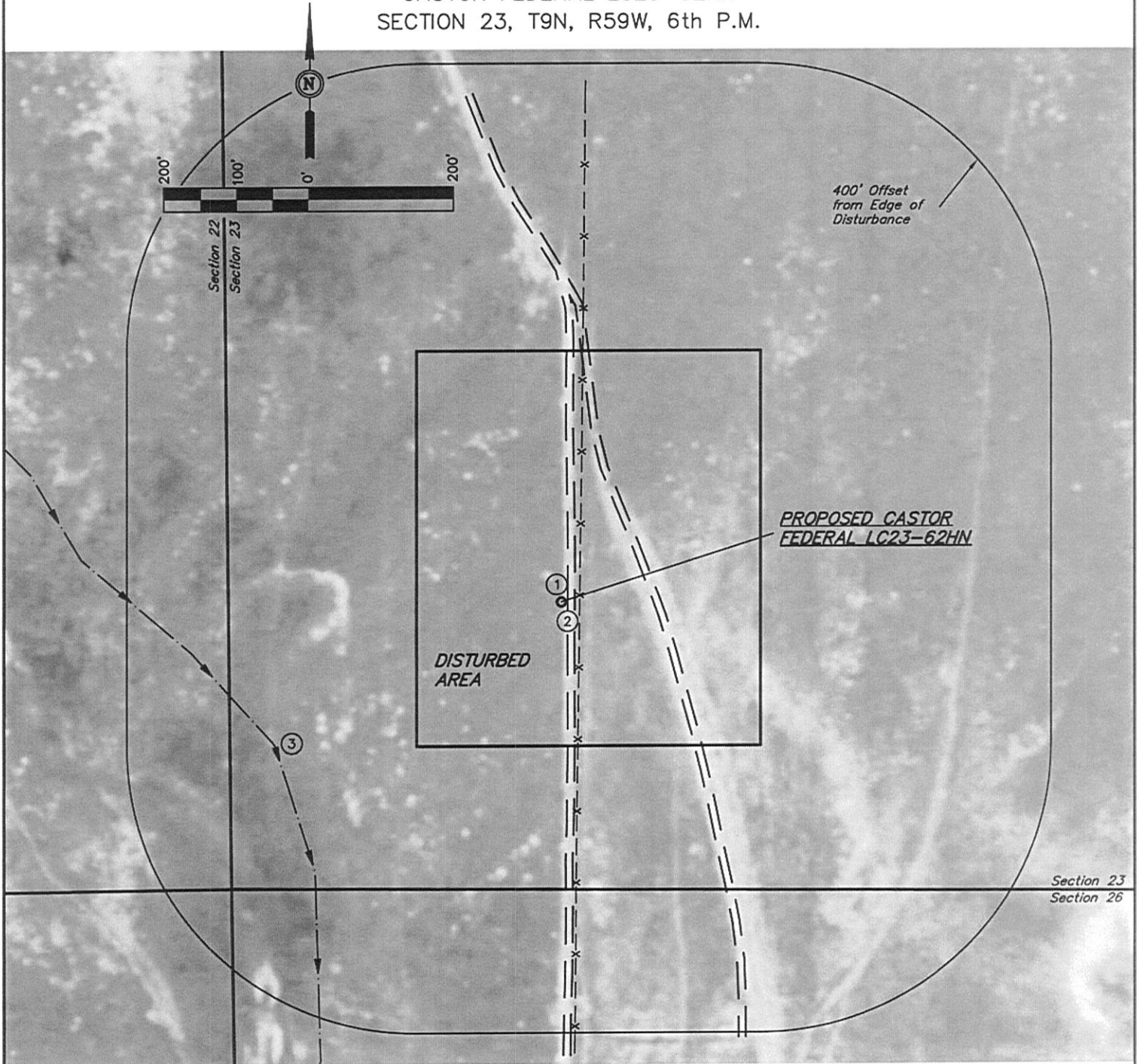


NOBLE ENERGY, INC.

LOCATION DRAWING FOR

CASTOR FEDERAL LC23-62HN
SECTION 23, T9N, R59W, 6th P.M.

DATE: 04-09-12
DRAWN BY: B.D.H.
REV: 08-31-12 J.M.H.



NOTE:
DIRECTION AND DISTANCE TO IMPROVEMENTS AND NEAREST FEATURES ARE FROM PROPOSED CASTOR FEDERAL LC23-62HN.

IMPROVEMENTS:

- ① 2-TRACK 14' E, 133' E
- ② FENCE 26' E
- ③ DRY DRAINAGE 450' SW

NEAREST FEATURE: BUILDING 3198' NW, PUBLIC ROAD
4873' N (CR 104), ABOVE GROUND UTILITY 3158' NW,
RAILROAD 5280' +, PROPERTY LINE 400' S

UINTAH ENGINEERING & LAND SURVEYING
85 So. 200 East • Vernal, Utah 84078 • (435) 789-1017