

T10N, R58W, 6th P.M.

WHITTING OIL & GAS CORP.

2012, UELS Alum. Cap,
0.5' Below Ground
Lat: 40.831497
Long: 103.842333

2012, UELS Alum. Cap,
0.5' High, PLS #28285
Lat: 40.831497
Long: 103.832603

Stone
Lat: 40.831547
Long: 103.822978

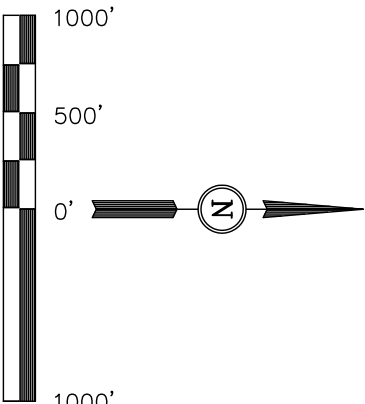
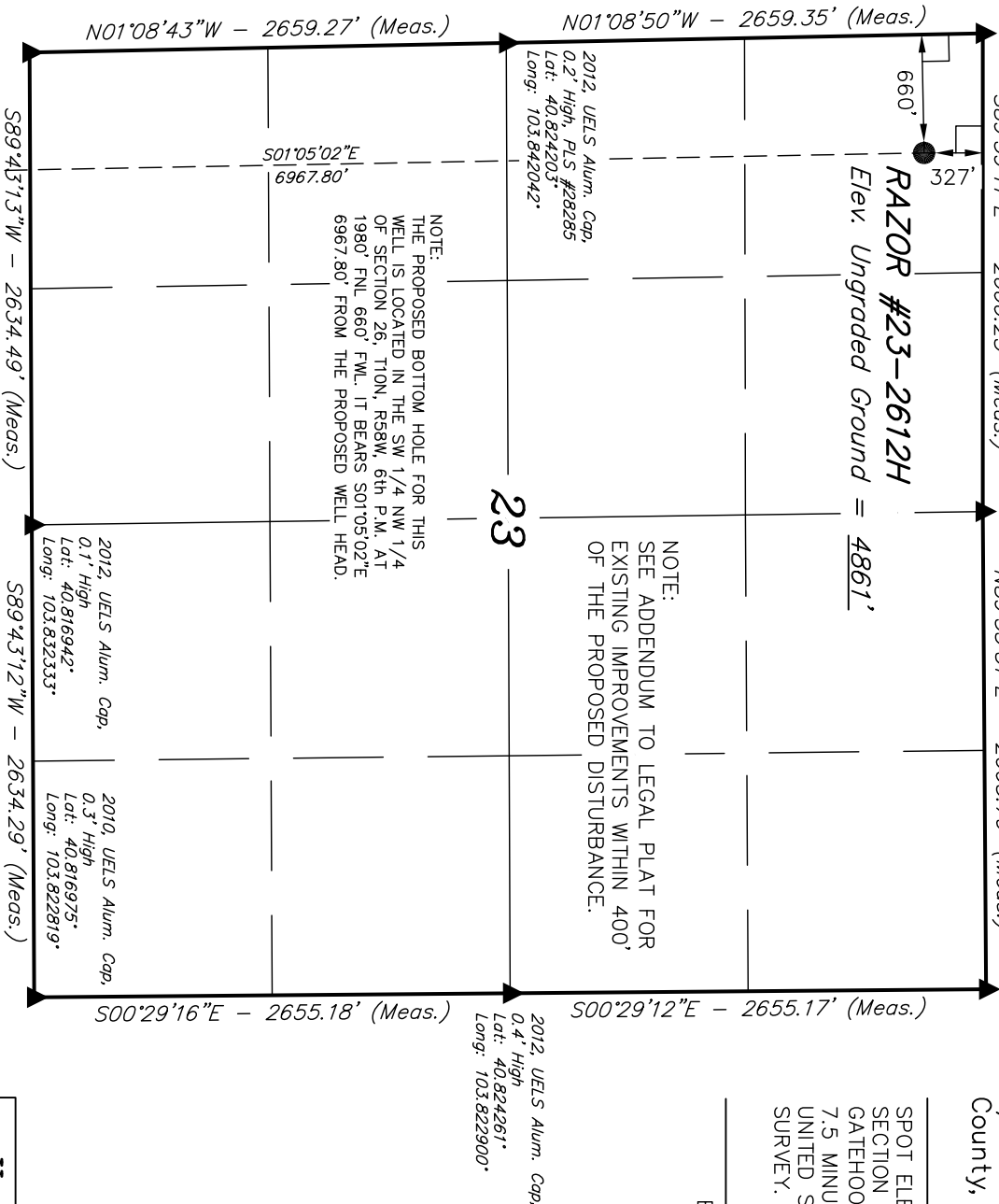
Well location, RAZOR #23-2612H (SURFACE LOCATION), located as shown in the NW 1/4 NW 1/4 of Section 23, T10N, R58W, 6th P.M., Weld County, Colorado.

BASIS OF ELEVATION

SPOT ELEVATION LOCATED AT THE NORTHEAST CORNER OF SECTION 15, 19N, R58W, 6th P.M. TAKEN FROM THE GATEHOOK SPRING, QUADRANGLE, COLORADO, WELD COUNTY, 7.5 MINUTE QUAD (TOPOGRAPHIC MAP) PUBLISHED BY THE UNITED STATES DEPARTMENT OF THE INTERIOR, GEOLOGICAL SURVEY. SAID ELEVATION IS MARKED AS BEING 4679 FEET.

BASIS OF BEARINGS

BASIS OF BEARINGS IS A G.P.S. OBSERVATION.



CERTIFICATE

THIS IS TO CERTIFY THAT THE ABOVE PLAT WAS PREPARED FROM FIELD NOTES OF ACTUAL SURVEYS MADE BY ME OR UNDER MY SUPERVISION AND THAT THE SAME ARE TRUE AND CORRECT TO THE BEST OF MY KNOWLEDGE AND BELIEF.

REGISTERED LAND SURVEYOR
REGISTRATION NO. 1492
STATE OF COLORADO

05-29-12

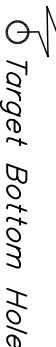
UINTAH ENGINEERING & LAND SURVEYING
85 SOUTH 200 EAST - VERNAL, UTAH 84078
(435) 789-1017

SCALE 1" = 1000'
DATE SURVEYED: 05-21-12
DATE DRAWN: 05-24-12

PARTY J.H. C.M. J.W.
WEATHER WARM
REFERENCES G.L.O. PLAT
FILE WHITTING OIL & GAS CORP.

LEGEND:

- = 90° SYMBOL
- = PROPOSED WELL HEAD.
- = SECTION CORNERS LOCATED.



2010, UELS Alum. Cap,
Flush W/ Ground
Lat: 40.816906
Long: 103.841850

S89°43'13"W - 2634.49' (Meas.)

S89°43'12"W - 2634.29' (Meas.)

2012, UELS Alum. Cap,
0.1' High
Lat: 40.816942
Long: 103.832333

2010, UELS Alum. Cap,
0.3' High
Lat: 40.816975
Long: 103.822819

NOTE:
THE PROPOSED BOTTOM HOLE FOR THIS WELL IS LOCATED IN THE SW 1/4 NW 1/4 OF SECTION 26, T10N, R58W, 6th P.M. AT 1960' FNL 660' F.W.L. IT BEARS S01°05'02"E 6967.80' FROM THE PROPOSED WELL HEAD.

NOTE:
SEE ADDENDUM TO LEGAL PLAT FOR EXISTING IMPROVEMENTS WITHIN 400' OF THE PROPOSED DISTURBANCE.

Surface Location

T10N, R58W, 6th P.M.

2010, UELS Alum. Cap, Flush W/Ground
Lat: 40.816906°
Long: 103.841850°

2012, UELS Alum. Cap, 0.1' High
Lat: 40.816942°
Long: 103.832333°

2010, UELS Alum. Cap, 0.3' High
Lat: 40.816975°
Long: 103.822819°

S89°43'13"W - 2634.49' (Meas.)

S89°43'12"W - 2634.29' (Meas.)

N00°55'31"W - 2648.14' (Meas.)

2012, UELS Alum. Cap, Flush W/Ground
Lat: 40.809642°
Long: 103.841694°

RAZOR #23-2612H
TARGET BOTTOM HOLE

26

N00°55'41"W - 2648.10' (Meas.)

2010, UELS Alum. Cap, Flush W/Ground, E/W Fence
Lat: 40.802375°
Long: 103.841542°

N89°59'08"W - 2648.66' (Meas.)

2012, Alum. Cap, Flush W/Ground
Lat: 40.802372°
Long: 103.831975°

N89°59'08"W - 2648.63' (Meas.)

2010, UELS Alum. Cap, Flush W/Ground, Fence Corner
Lat: 40.802369°
Long: 103.822411°

S01°13'45"E - 2661.93' (Meas.)

2012, UELS Alum. Cap, 0.1' High
Lat: 40.809672°
Long: 103.822617°

S01°13'46"E - 2661.91' (Meas.)

WHITTING OIL & GAS CORP.

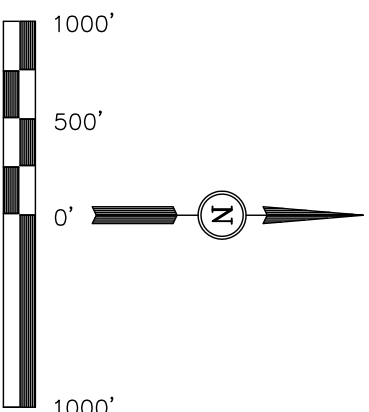
Well location, RAZOR #23-2612H (TARGET BOTTOM HOLE), located as shown in the SW 1/4 NW 1/4 of Section 26, T10N, R58W, 6th P.M., Weld County, Colorado.

BASIS OF ELEVATION

SPOT ELEVATION LOCATED AT THE NORTHEAST CORNER OF SECTION 15, T9N, R58W, 6th P.M. TAKEN FROM THE GATEHOOK SPRING, QUADRANGLE, COLORADO, WELD COUNTY, 7.5 MINUTE QUAD (TOPOGRAPHIC MAP) PUBLISHED BY THE UNITED STATES DEPARTMENT OF THE INTERIOR, GEOLOGICAL SURVEY. SAID ELEVATION IS MARKED AS BEING 4679 FEET.

BASIS OF BEARINGS

BASIS OF BEARINGS IS A G.P.S. OBSERVATION.



CERTIFICATE

THIS IS TO CERTIFY THAT THE ABOVE PLAT WAS PREPARED FROM FIELD NOTES OF ACTUAL SURVEYS MADE BY ME OR UNDER MY SUPERVISION AND THAT THE SAME ARE TRUE AND CORRECT TO THE BEST OF MY KNOWLEDGE AND BELIEF.

REGISTERED LAND SURVEYOR
REGISTRATION NO. 1492
STATE OF COLORADO
05-29-12

UINTAH ENGINEERING & LAND SURVEYING
85 SOUTH 200 EAST - VERNAL, UTAH 84078
(435) 789-1017

SCALE 1" = 1000'	DATE SURVEYED: 05-21-12	DATE DRAWN: 05-24-12
PARTY J.H. C.M. J.W.	REFERENCES G.L.O. PLAT	
WEATHER WARM	FILE WHITTING OIL & GAS CORP.	

LEGEND:

- 90° SYMBOL
- PROPOSED WELL HEAD.
- SECTION CORNERS LOCATED.