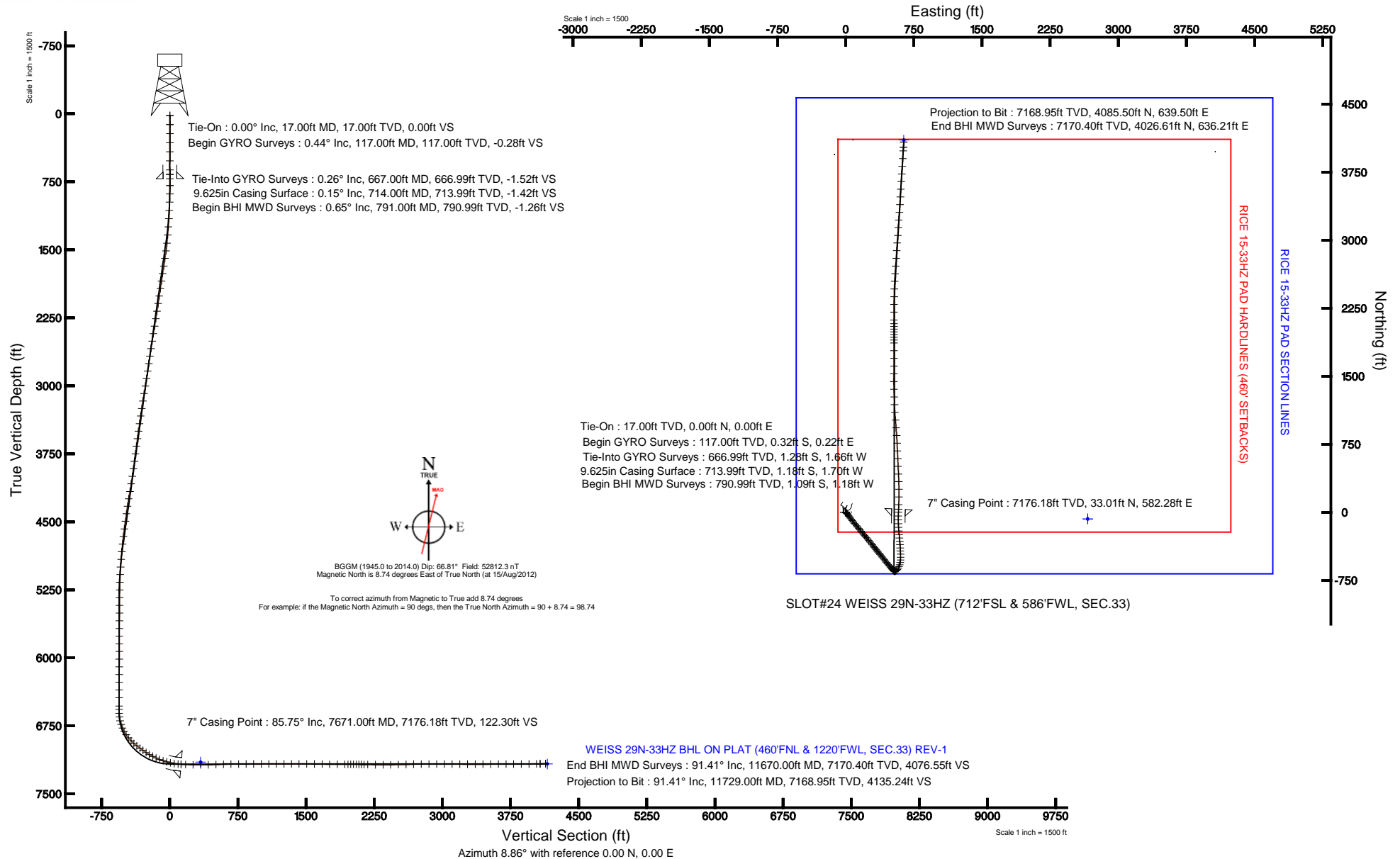


KERR-MCGEE OIL & GAS ONSHORE LP

Location: COLORADO Slot: SLOT#24 WEISS 29N-33HZ (712'FSL & 586'FWL, SEC.33)
 Field: WELD COUNTY (KERR MCGEE) Well: WEISS 29N-33HZ
 Facility: SEC.33-T3N-R66W Wellbore: WEISS 29N-33HZ PWB

Plot reference wellpath is WEISS 29N-33HZ (REV-C.0) PWP

True vertical depths are referenced to XTREME 6 (RKB)	Grid System: NAD83 / Lambert Colorado SP, Northern Zone (501), US feet
Measured depths are referenced to XTREME 6 (RKB)	North Reference: True north
XTREME 6 (RKB) to Mean Sea Level: 4931 feet	Scale: True distance
Mean Sea Level to Mud line (At Slot: SLOT#24 WEISS 29N-33HZ (712'FSL & 586'FWL, SEC.33)): 0 feet	Depths are in feet
Coordinates are in feet referenced to Slot	Created by: augunora on 27/Sep/2012





Actual Wellpath Report

WEISS 29N-33HZ AWP

Page 1 of 6



REFERENCE WELLPATH IDENTIFICATION

Operator	KERR-MCGEE OIL & GAS ONSHORE LP	Slot	SLOT#24 WEISS 29N-33HZ (712'FSL & 586'FWL, SEC.33)
Area	COLORADO	Well	WEISS 29N-33HZ
Field	WELD COUNTY (KERR MCGEE)	Wellbore	WEISS 29N-33HZ AWB
Facility	SEC.33-T3N-R66W		

REPORT SETUP INFORMATION

Projection System	NAD83 / Lambert Colorado SP, Northern Zone (501), US feet	Software System	WellArchitect® 3.0.0
North Reference	True	User	Augunora
Scale	0.999958	Report Generated	27/Sep/2012 at 15:29
Convergence at slot	0.46° East	Database/Source file	WA_ANADARKO/WEISS_29N-33HZ_AWB.xml

WELLPATH LOCATION

	Local coordinates		Grid coordinates		Geographic coordinates	
	North[ft]	East[ft]	Easting[US ft]	Northing[US ft]	Latitude	Longitude
Slot Location	74.12	-2665.34	3198524.15	1307812.15	40°10'34.165"N	104°47'22.312"W
Facility Reference Pt			3201189.88	1307759.68	40°10'33.434"N	104°46'47.975"W
Field Reference Pt			3197771.84	1268891.29	40°04'09.600"N	104°47'36.000"W

WELLPATH DATUM

Calculation method	Minimum curvature	XTREME 6 (RKB) to Facility Vertical Datum	4931.00ft
Horizontal Reference Pt	Slot	XTREME 6 (RKB) to Mean Sea Level	4931.00ft
Vertical Reference Pt	XTREME 6 (RKB)	XTREME 6 (RKB) to Mud Line at Slot (SLOT#24 WEISS 29N-33HZ (712'FSL & 586'FWL, SEC.33))	4931.00ft
MD Reference Pt	XTREME 6 (RKB)	Section Origin	N 0.00, E 0.00 ft
Field Vertical Reference	Mean Sea Level	Section Azimuth	8.90°



Actual Wellpath Report

WEISS 29N-33HZ AWP

Page 2 of 6



REFERENCE WELLPATH IDENTIFICATION

Operator	KERR-MCGEE OIL & GAS ONSHORE LP	Slot	SLOT#24 WEISS 29N-33HZ (712'FSL & 586'FWL, SEC.33)
Area	COLORADO	Well	WEISS 29N-33HZ
Field	WELD COUNTY (KERR MCGEE)	Wellbore	WEISS 29N-33HZ AWP
Facility	SEC.33-T3N-R66W		

WELLPATH DATA (157 stations) † = interpolated/extrapolated station

MD [ft]	Inclination [°]	Azimuth [°]	TVD [ft]	Vert Sect [ft]	North [ft]	East [ft]	Latitude	Longitude	DLS [°/100ft]	Comments
0.00†	0.000	145.360	0.00	0.00	0.00	0.00	40°10'34.165"N	104°47'22.312"W	0.00	
17.00	0.000	145.360	17.00	0.00	0.00	0.00	40°10'34.165"N	104°47'22.312"W	0.00	Tie-On
117.00	0.440	145.360	117.00	-0.28	-0.32	0.22	40°10'34.162"N	104°47'22.309"W	0.44	Begin GYRO Surveys
217.00	0.380	196.220	217.00	-0.89	-0.95	0.34	40°10'34.156"N	104°47'22.308"W	0.36	
317.00	0.260	257.320	317.00	-1.30	-1.32	0.03	40°10'34.152"N	104°47'22.312"W	0.34	
417.00	0.320	259.800	416.99	-1.47	-1.42	-0.47	40°10'34.151"N	104°47'22.318"W	0.06	
517.00	0.290	266.270	516.99	-1.62	-1.48	-0.99	40°10'34.150"N	104°47'22.325"W	0.05	
617.00	0.270	295.920	616.99	-1.61	-1.40	-1.46	40°10'34.151"N	104°47'22.331"W	0.14	
667.00	0.260	305.450	666.99	-1.52	-1.28	-1.66	40°10'34.152"N	104°47'22.333"W	0.09	Tie-Into GYRO Surveys
791.00	0.650	87.640	790.99	-1.26	-1.09	-1.18	40°10'34.154"N	104°47'22.327"W	0.70	Begin BHI MWD Surveys
882.00	1.690	134.180	881.97	-1.93	-2.00	0.30	40°10'34.145"N	104°47'22.308"W	1.46	
974.00	3.150	137.470	973.89	-4.29	-4.81	2.98	40°10'34.117"N	104°47'22.274"W	1.59	
1065.00	4.120	133.690	1064.70	-7.72	-8.91	7.03	40°10'34.077"N	104°47'22.221"W	1.10	
1156.00	5.290	132.100	1155.39	-11.88	-13.98	12.51	40°10'34.027"N	104°47'22.151"W	1.29	
1247.00	6.000	140.010	1245.95	-17.30	-20.44	18.68	40°10'33.963"N	104°47'22.071"W	1.16	
1337.00	7.120	142.680	1335.36	-24.26	-28.48	25.08	40°10'33.884"N	104°47'21.989"W	1.29	
1429.00	8.790	145.770	1426.47	-33.33	-38.82	32.49	40°10'33.781"N	104°47'21.893"W	1.87	
1514.00	10.400	143.950	1510.28	-43.50	-50.40	40.66	40°10'33.667"N	104°47'21.788"W	1.93	
1600.00	11.800	144.150	1594.67	-55.24	-63.80	50.38	40°10'33.535"N	104°47'21.663"W	1.63	
1685.00	12.460	142.290	1677.77	-67.72	-78.10	61.08	40°10'33.393"N	104°47'21.525"W	0.90	
1770.00	12.650	142.370	1760.74	-80.42	-92.73	72.37	40°10'33.249"N	104°47'21.380"W	0.22	
1854.00	12.340	142.400	1842.75	-92.93	-107.12	83.46	40°10'33.106"N	104°47'21.237"W	0.37	
1940.00	12.810	141.090	1926.69	-105.66	-121.82	95.06	40°10'32.961"N	104°47'21.087"W	0.64	
2025.00	12.370	139.830	2009.64	-117.95	-136.11	106.85	40°10'32.820"N	104°47'20.935"W	0.61	
2110.00	12.790	136.280	2092.61	-129.63	-149.87	119.23	40°10'32.684"N	104°47'20.776"W	1.03	
2195.00	13.000	141.820	2175.46	-141.85	-164.18	131.64	40°10'32.543"N	104°47'20.616"W	1.47	
2280.00	13.220	141.330	2258.25	-154.92	-179.29	143.62	40°10'32.393"N	104°47'20.462"W	0.29	
2366.00	13.850	142.310	2341.86	-168.63	-195.11	156.06	40°10'32.237"N	104°47'20.302"W	0.78	
2451.00	13.840	140.960	2424.39	-182.43	-211.06	168.68	40°10'32.079"N	104°47'20.139"W	0.38	
2536.00	13.610	140.560	2506.96	-195.89	-226.68	181.44	40°10'31.925"N	104°47'19.975"W	0.29	
2621.00	12.780	140.180	2589.72	-208.74	-241.62	193.81	40°10'31.777"N	104°47'19.815"W	0.98	
2706.00	12.880	139.770	2672.60	-221.15	-256.08	205.95	40°10'31.634"N	104°47'19.659"W	0.16	
2790.00	12.090	139.530	2754.61	-233.00	-269.92	217.71	40°10'31.498"N	104°47'19.507"W	0.94	
2875.00	12.950	139.340	2837.59	-244.98	-283.91	229.69	40°10'31.359"N	104°47'19.353"W	1.01	
2960.00	13.330	139.820	2920.36	-257.57	-298.62	242.22	40°10'31.214"N	104°47'19.192"W	0.47	
3045.00	13.890	139.900	3002.98	-270.69	-313.92	255.11	40°10'31.063"N	104°47'19.025"W	0.66	
3130.00	14.090	140.390	3085.45	-284.24	-329.69	268.28	40°10'30.907"N	104°47'18.856"W	0.27	
3215.00	13.340	141.370	3168.03	-297.71	-345.32	281.00	40°10'30.753"N	104°47'18.692"W	0.92	
3300.00	13.090	140.070	3250.78	-310.67	-360.36	293.30	40°10'30.604"N	104°47'18.534"W	0.46	
3385.00	11.900	141.620	3333.76	-322.95	-374.62	304.92	40°10'30.463"N	104°47'18.384"W	1.45	
3470.00	11.200	141.930	3417.04	-334.53	-387.98	315.45	40°10'30.331"N	104°47'18.248"W	0.83	
3556.00	11.610	143.280	3501.34	-346.29	-401.50	325.78	40°10'30.197"N	104°47'18.115"W	0.57	
3639.00	10.880	142.650	3582.75	-357.55	-414.42	335.52	40°10'30.070"N	104°47'17.990"W	0.89	
3724.00	11.210	143.170	3666.18	-368.86	-427.41	345.34	40°10'29.941"N	104°47'17.863"W	0.41	
3809.00	11.380	139.510	3749.53	-380.09	-440.40	355.74	40°10'29.813"N	104°47'17.729"W	0.87	



Actual Wellpath Report

WEISS 29N-33HZ AWP

Page 3 of 6



REFERENCE WELLPATH IDENTIFICATION

Operator	KERR-MCGEE OIL & GAS ONSHORE LP	Slot	SLOT#24 WEISS 29N-33HZ (712'FSL & 586'FWL, SEC.33)
Area	COLORADO	Well	WEISS 29N-33HZ
Field	WELD COUNTY (KERR MCGEE)	Wellbore	WEISS 29N-33HZ AWB
Facility	SEC.33-T3N-R66W		

WELLPATH DATA (157 stations)

MD [ft]	Inclination [°]	Azimuth [°]	TVD [ft]	Vert Sect [ft]	North [ft]	East [ft]	Latitude	Longitude	DLS [°/100ft]	Comments
3894.00	11.500	139.990	3832.84	-391.12	-453.27	366.63	40°10'29.686"N	104°47'17.589"W	0.18	
3979.00	11.810	139.320	3916.09	-402.33	-466.35	377.75	40°10'29.556"N	104°47'17.446"W	0.40	
4064.00	12.180	140.670	3999.23	-413.94	-479.89	389.10	40°10'29.423"N	104°47'17.299"W	0.55	
4149.00	13.660	139.880	4082.08	-426.50	-494.50	401.25	40°10'29.278"N	104°47'17.143"W	1.75	
4235.00	14.090	141.270	4165.57	-440.21	-510.43	414.35	40°10'29.121"N	104°47'16.974"W	0.63	
4319.00	13.480	142.950	4247.15	-453.91	-526.22	426.64	40°10'28.965"N	104°47'16.816"W	0.87	
4402.00	12.220	144.250	4328.07	-466.89	-541.07	437.60	40°10'28.818"N	104°47'16.675"W	1.56	
4487.00	11.400	140.790	4411.27	-478.90	-554.88	448.17	40°10'28.682"N	104°47'16.538"W	1.27	
4572.00	11.380	141.460	4494.60	-490.18	-567.95	458.71	40°10'28.552"N	104°47'16.403"W	0.16	
4657.00	11.280	138.330	4577.94	-501.13	-580.72	469.46	40°10'28.426"N	104°47'16.264"W	0.73	
4742.00	11.260	137.910	4661.30	-511.64	-593.09	480.55	40°10'28.304"N	104°47'16.121"W	0.10	
4828.00	10.530	138.150	4745.75	-521.89	-605.17	491.42	40°10'28.185"N	104°47'15.981"W	0.85	
4913.00	8.600	137.310	4829.57	-530.76	-615.63	500.91	40°10'28.081"N	104°47'15.859"W	2.28	
4998.00	7.140	134.370	4913.76	-537.77	-623.99	509.00	40°10'27.999"N	104°47'15.755"W	1.78	
5083.00	5.540	137.110	4998.24	-543.38	-630.69	515.57	40°10'27.932"N	104°47'15.670"W	1.92	
5168.00	4.150	137.110	5082.94	-547.82	-635.95	520.45	40°10'27.880"N	104°47'15.607"W	1.64	
5253.00	3.140	125.710	5167.76	-550.77	-639.57	524.43	40°10'27.845"N	104°47'15.556"W	1.46	
5338.00	2.120	128.840	5252.67	-552.61	-641.91	527.55	40°10'27.822"N	104°47'15.516"W	1.21	
5423.00	1.780	118.800	5337.62	-553.84	-643.53	529.93	40°10'27.806"N	104°47'15.485"W	0.57	
5508.00	1.000	114.960	5422.60	-554.49	-644.48	531.76	40°10'27.796"N	104°47'15.462"W	0.92	
5593.00	0.990	126.840	5507.59	-555.04	-645.24	533.02	40°10'27.789"N	104°47'15.445"W	0.24	
5678.00	0.610	142.200	5592.58	-555.70	-646.03	533.89	40°10'27.781"N	104°47'15.434"W	0.51	
5763.00	0.770	104.640	5677.57	-556.07	-646.53	534.72	40°10'27.776"N	104°47'15.424"W	0.55	
5848.00	0.380	238.460	5762.57	-556.31	-646.83	535.03	40°10'27.773"N	104°47'15.420"W	1.26	
5933.00	0.630	223.290	5847.57	-556.87	-647.31	534.47	40°10'27.768"N	104°47'15.427"W	0.33	
6016.00	0.690	222.530	5930.56	-557.67	-648.01	533.82	40°10'27.761"N	104°47'15.435"W	0.07	
6101.00	0.570	278.360	6015.56	-558.10	-648.33	533.05	40°10'27.758"N	104°47'15.445"W	0.71	
6186.00	0.280	240.590	6100.55	-558.23	-648.37	532.45	40°10'27.758"N	104°47'15.453"W	0.46	
6271.00	0.570	115.240	6185.55	-558.48	-648.65	532.65	40°10'27.755"N	104°47'15.450"W	0.90	
6356.00	1.140	121.290	6270.54	-558.92	-649.27	533.76	40°10'27.749"N	104°47'15.436"W	0.68	
6441.00	1.350	114.300	6355.52	-559.51	-650.12	535.39	40°10'27.740"N	104°47'15.415"W	0.30	
6527.00	1.960	97.140	6441.49	-559.73	-650.72	537.78	40°10'27.734"N	104°47'15.384"W	0.91	
6620.00	3.110	102.160	6534.39	-559.83	-651.45	541.82	40°10'27.727"N	104°47'15.332"W	1.26	
6656.00	2.770	93.610	6570.35	-559.80	-651.71	543.64	40°10'27.725"N	104°47'15.309"W	1.54	
6699.00	5.440	65.720	6613.24	-558.59	-650.94	546.54	40°10'27.732"N	104°47'15.271"W	7.58	
6741.00	10.880	62.010	6654.80	-555.12	-648.26	551.86	40°10'27.759"N	104°47'15.203"W	13.01	
6784.00	16.250	50.820	6696.59	-548.20	-642.55	560.11	40°10'27.815"N	104°47'15.096"W	13.84	
6827.00	21.240	39.960	6737.31	-537.04	-632.77	569.79	40°10'27.912"N	104°47'14.972"W	14.12	
6869.00	24.570	29.510	6776.01	-522.34	-619.33	578.98	40°10'28.045"N	104°47'14.853"W	12.49	
6912.00	29.490	21.530	6814.31	-503.63	-601.69	587.28	40°10'28.219"N	104°47'14.746"W	14.19	
6954.00	34.450	15.660	6849.94	-481.73	-580.61	594.28	40°10'28.427"N	104°47'14.656"W	13.92	
6997.00	39.400	10.010	6884.31	-455.98	-555.44	599.94	40°10'28.676"N	104°47'14.583"W	13.95	
7040.00	43.700	3.630	6916.50	-427.52	-527.15	603.26	40°10'28.956"N	104°47'14.540"W	14.02	
7082.00	49.010	359.370	6945.48	-397.41	-496.79	604.01	40°10'29.256"N	104°47'14.531"W	14.61	
7125.00	52.670	358.310	6972.63	-364.59	-463.46	603.32	40°10'29.585"N	104°47'14.540"W	8.72	



Actual Wellpath Report

WEISS 29N-33HZ AWP

Page 4 of 6



REFERENCE WELLPATH IDENTIFICATION

Operator	KERR-MCGEE OIL & GAS ONSHORE LP	Slot	SLOT#24 WEISS 29N-33HZ (712'FSL & 586'FWL, SEC.33)
Area	COLORADO	Well	WEISS 29N-33HZ
Field	WELD COUNTY (KERR MCGEE)	Wellbore	WEISS 29N-33HZ AWP
Facility	SEC.33-T3N-R66W		

WELLPATH DATA (157 stations) † = interpolated/extrapolated station

MD [ft]	Inclination [°]	Azimuth [°]	TVD [ft]	Vert Sect [ft]	North [ft]	East [ft]	Latitude	Longitude	DLS [°/100ft]	Comments
7168.00	54.560	357.520	6998.14	-330.61	-428.87	602.06	40°10'29.927"N	104°47'14.556"W	4.64	
7210.00	55.480	356.910	7022.22	-296.91	-394.50	600.39	40°10'30.266"N	104°47'14.577"W	2.49	
7253.00	57.640	355.630	7045.91	-261.90	-358.70	598.05	40°10'30.620"N	104°47'14.608"W	5.60	
7296.00	60.200	355.420	7068.11	-226.07	-321.99	595.17	40°10'30.983"N	104°47'14.645"W	5.97	
7338.00	63.180	354.770	7088.03	-190.17	-285.15	592.01	40°10'31.347"N	104°47'14.685"W	7.22	
7381.00	65.670	354.100	7106.59	-152.61	-246.55	588.25	40°10'31.729"N	104°47'14.734"W	5.96	
7423.00	68.810	355.210	7122.83	-115.08	-207.99	584.64	40°10'32.110"N	104°47'14.780"W	7.86	
7466.00	72.140	357.010	7137.20	-75.56	-167.57	581.90	40°10'32.509"N	104°47'14.816"W	8.69	
7509.00	74.770	357.870	7149.45	-35.17	-126.39	580.06	40°10'32.916"N	104°47'14.839"W	6.41	
7552.00	77.600	359.020	7159.72	5.89	-84.66	578.93	40°10'33.328"N	104°47'14.854"W	7.08	
7594.00	80.700	1.220	7167.62	46.65	-43.42	579.02	40°10'33.736"N	104°47'14.853"W	9.00	
7637.00	84.300	3.020	7173.23	88.98	-0.82	580.60	40°10'34.157"N	104°47'14.832"W	9.34	
7671.00†	85.750	2.659	7176.18	122.66	33.01	582.28	40°10'34.491"N	104°47'14.811"W	4.39	7" Casing Point
7720.00	87.840	2.140	7178.92	171.26	81.89	584.33	40°10'34.974"N	104°47'14.784"W	4.39	
7805.00	89.040	0.440	7181.24	255.48	166.83	586.24	40°10'35.814"N	104°47'14.760"W	2.45	
7890.00	90.120	359.490	7181.86	339.44	251.82	586.19	40°10'36.653"N	104°47'14.760"W	1.69	
7975.00	90.730	358.630	7181.23	423.19	336.81	584.79	40°10'37.493"N	104°47'14.778"W	1.24	
8060.00	91.720	357.030	7179.41	506.59	421.72	581.58	40°10'38.332"N	104°47'14.820"W	2.21	
8145.00	91.970	357.290	7176.68	589.77	506.58	577.37	40°10'39.171"N	104°47'14.874"W	0.42	
8230.00	91.230	357.320	7174.30	673.00	591.45	573.37	40°10'40.010"N	104°47'14.925"W	0.87	
8315.00	90.060	357.390	7173.34	756.28	676.35	569.45	40°10'40.849"N	104°47'14.976"W	1.38	
8400.00	90.340	357.550	7173.05	839.59	761.27	565.70	40°10'41.688"N	104°47'15.024"W	0.38	
8485.00	89.910	355.980	7172.86	922.69	846.13	560.90	40°10'42.526"N	104°47'15.086"W	1.92	
8570.00	90.120	355.750	7172.84	1005.50	930.91	554.77	40°10'43.364"N	104°47'15.165"W	0.37	
8655.00	90.460	355.560	7172.41	1088.24	1015.66	548.33	40°10'44.202"N	104°47'15.248"W	0.46	
8741.00	90.680	356.510	7171.55	1172.08	1101.45	542.39	40°10'45.049"N	104°47'15.324"W	1.13	
8826.00	90.460	356.970	7170.71	1255.17	1186.31	537.55	40°10'45.888"N	104°47'15.386"W	0.60	
8911.00	88.860	357.360	7171.21	1338.39	1271.20	533.35	40°10'46.727"N	104°47'15.441"W	1.94	
8996.00	89.780	359.290	7172.22	1421.93	1356.15	530.86	40°10'47.566"N	104°47'15.473"W	2.52	
9081.00	89.850	359.670	7172.50	1505.79	1441.15	530.09	40°10'48.406"N	104°47'15.483"W	0.45	
9166.00	89.600	0.610	7172.90	1589.79	1526.15	530.30	40°10'49.246"N	104°47'15.480"W	1.14	
9252.00	88.400	0.500	7174.41	1674.87	1612.13	531.13	40°10'50.096"N	104°47'15.469"W	1.40	
9337.00	89.530	359.850	7175.94	1758.87	1697.11	531.39	40°10'50.936"N	104°47'15.466"W	1.53	
9422.00	89.690	359.920	7176.52	1842.82	1782.11	531.22	40°10'51.776"N	104°47'15.468"W	0.21	
9506.00	89.810	0.210	7176.89	1925.82	1866.11	531.32	40°10'52.606"N	104°47'15.467"W	0.37	
9541.00	89.720	0.270	7177.03	1960.43	1901.11	531.46	40°10'52.952"N	104°47'15.465"W	0.31	
9571.00	89.810	0.560	7177.15	1990.10	1931.11	531.68	40°10'53.248"N	104°47'15.462"W	1.01	
9601.00	89.630	0.450	7177.30	2019.78	1961.10	531.95	40°10'53.545"N	104°47'15.459"W	0.70	
9631.00	89.750	0.570	7177.46	2049.45	1991.10	532.21	40°10'53.841"N	104°47'15.455"W	0.57	
9661.00	89.190	359.880	7177.74	2079.11	2021.10	532.33	40°10'54.138"N	104°47'15.454"W	2.96	
9691.00	89.100	359.850	7178.19	2108.73	2051.10	532.26	40°10'54.434"N	104°47'15.454"W	0.32	
9721.00	88.980	359.700	7178.69	2138.35	2081.09	532.14	40°10'54.730"N	104°47'15.456"W	0.64	
9761.00	88.890	359.980	7179.43	2177.85	2121.09	532.03	40°10'55.126"N	104°47'15.457"W	0.74	
9847.00	89.750	0.140	7180.45	2262.82	2207.08	532.12	40°10'55.975"N	104°47'15.456"W	1.02	
9932.00	89.810	0.040	7180.78	2346.82	2292.08	532.25	40°10'56.815"N	104°47'15.454"W	0.14	



Actual Wellpath Report

WEISS 29N-33HZ AWP

Page 5 of 6



REFERENCE WELLPATH IDENTIFICATION

Operator	KERR-MCGEE OIL & GAS ONSHORE LP	Slot	SLOT#24 WEISS 29N-33HZ (712'FSL & 586'FWL, SEC.33)
Area	COLORADO	Well	WEISS 29N-33HZ
Field	WELD COUNTY (KERR MCGEE)	Wellbore	WEISS 29N-33HZ AWB
Facility	SEC.33-T3N-R66W		

WELLPATH DATA (157 stations)

MD [ft]	Inclination [°]	Azimuth [°]	TVD [ft]	Vert Sect [ft]	North [ft]	East [ft]	Latitude	Longitude	DLS [°/100ft]	Comments
10017.00	90.180	1.140	7180.79	2430.92	2377.07	533.13	40°10'57.655"N	104°47'15.443"W	1.37	
10102.00	91.010	1.750	7179.90	2515.20	2462.04	535.27	40°10'58.495"N	104°47'15.416"W	1.21	
10187.00	91.560	2.950	7178.00	2599.62	2546.95	538.76	40°10'59.334"N	104°47'15.371"W	1.55	
10270.00	91.850	4.260	7175.53	2682.23	2629.74	543.97	40°11'00.152"N	104°47'15.303"W	1.62	
10356.00	89.780	3.990	7174.31	2767.92	2715.51	550.16	40°11'01.000"N	104°47'15.224"W	2.43	
10441.00	89.880	3.730	7174.56	2852.59	2800.31	555.88	40°11'01.838"N	104°47'15.150"W	0.33	
10526.00	90.060	3.670	7174.60	2937.24	2885.14	561.37	40°11'02.676"N	104°47'15.079"W	0.22	
10611.00	89.780	4.150	7174.72	3021.92	2969.94	567.16	40°11'03.514"N	104°47'15.004"W	0.65	
10696.00	90.090	4.130	7174.82	3106.63	3054.72	573.30	40°11'04.352"N	104°47'14.925"W	0.37	
10782.00	89.450	3.720	7175.16	3192.30	3140.51	579.18	40°11'05.200"N	104°47'14.850"W	0.88	
10866.00	90.060	3.890	7175.52	3275.97	3224.33	584.76	40°11'06.028"N	104°47'14.778"W	0.75	
10952.00	89.780	4.770	7175.64	3361.69	3310.08	591.25	40°11'06.875"N	104°47'14.694"W	1.07	
11037.00	90.150	3.750	7175.69	3446.41	3394.84	597.57	40°11'07.713"N	104°47'14.613"W	1.28	
11122.00	90.430	3.100	7175.26	3531.03	3479.69	602.64	40°11'08.551"N	104°47'14.547"W	0.83	
11207.00	90.790	2.950	7174.36	3615.57	3564.57	607.13	40°11'09.390"N	104°47'14.489"W	0.46	
11292.00	89.470	3.930	7174.17	3700.19	3649.41	612.23	40°11'10.228"N	104°47'14.424"W	1.93	
11375.00	89.930	3.520	7174.60	3782.85	3732.23	617.62	40°11'11.047"N	104°47'14.354"W	0.74	
11460.00	90.520	3.650	7174.27	3867.48	3817.07	622.94	40°11'11.885"N	104°47'14.286"W	0.71	
11545.00	90.980	3.940	7173.15	3952.14	3901.87	628.56	40°11'12.723"N	104°47'14.213"W	0.64	
11630.00	91.410	3.320	7171.38	4036.76	3986.68	633.94	40°11'13.561"N	104°47'14.144"W	0.89	
11670.00	91.410	3.190	7170.40	4076.55	4026.61	636.21	40°11'13.956"N	104°47'14.114"W	0.32	End BHI MWD Surveys
11729.00	91.410	3.190	7168.95	4135.24	4085.50	639.50	40°11'14.538"N	104°47'14.072"W	0.00	Projection to Bit

HOLE & CASING SECTIONS - Ref Wellbore: WEISS 29N-33HZ AWB Ref Wellpath: WEISS 29N-33HZ AWP

String/Diameter	Start MD [ft]	End MD [ft]	Interval [ft]	Start TVD [ft]	End TVD [ft]	Start N/S [ft]	Start E/W [ft]	End N/S [ft]	End E/W [ft]
13.5in Open Hole	17.00	714.00	697.00	17.00	713.99	0.00	0.00	-1.18	-1.70
9.625in Casing Surface	17.00	714.00	697.00	17.00	713.99	0.00	0.00	-1.18	-1.70
8.75in Open Hole	17.00	7682.00	7665.00	17.00	7176.95	0.00	0.00	43.97	582.78
7in Casing Intermediate	17.00	7671.00	7654.00	17.00	7176.18	0.00	0.00	33.01	582.28
6.125in Open Hole	7671.00	8485.00	814.00	7176.18	7172.86	33.01	582.28	846.13	560.90

WELLPATH COMPOSITION - Ref Wellbore: WEISS 29N-33HZ AWB Ref Wellpath: WEISS 29N-33HZ AWP

Start MD [ft]	End MD [ft]	Positional Uncertainty Model	Log Name/Comment	Wellbore
17.00	667.00	Generic gyro - continuous (Standard)	GYRODATA SURVEYS <117-667>	WEISS 29N-33HZ AWB
667.00	7637.00	NaviTrak (Standard)	BHI MWD SURVEYS 8 3/4" HOLE <791-7637>	WEISS 29N-33HZ AWB
7637.00	11670.00	OnTrak (Standard)	BHI MWD SURVEYS 6 1/8" HOLE <7720-11670>	WEISS 29N-33HZ AWB
11670.00	11729.00	Blind Drilling (std)	Projection to bit	WEISS 29N-33HZ AWB



Actual Wellpath Report

WEISS 29N-33HZ AWP

Page 6 of 6



REFERENCE WELLPATH IDENTIFICATION

Operator	KERR-MCGEE OIL & GAS ONSHORE LP	Slot	SLOT#24 WEISS 29N-33HZ (712'FSL & 586'FWL, SEC.33)
Area	COLORADO	Well	WEISS 29N-33HZ
Field	WELD COUNTY (KERR MCGEE)	Wellbore	WEISS 29N-33HZ AWB
Facility	SEC.33-T3N-R66W		

WELLPATH COMMENTS

MD [ft]	Inclination [°]	Azimuth [°]	TVD [ft]	Comment
17.00	0.000	145.360	17.00	Tie-On
117.00	0.440	145.360	117.00	Begin GYRO Surveys
667.00	0.260	305.450	666.99	Tie-Into GYRO Surveys
791.00	0.650	87.640	790.99	Begin BHI MWD Surveys
7671.00	85.750	2.659	7176.18	7" Casing Point
11670.00	91.410	3.190	7170.40	End BHI MWD Surveys
11729.00	91.410	3.190	7168.95	Projection to Bit