



Pioneer Energy Services

VDL CCL GAMMA-RAY  
CEMENT BOND LOG

Company		WIEPKING-FULLERTON ENERGY LLC	
Well	MAHALO #3		
Field	GREAT PLAINS		
County	LINCOLN		
State	COLORADO		
Location:	SEC 29 TWP 10S RGE 55W 660' FNL & 1980' FEL NWNE		Other Services PERF.
Permanent Datum	GL	Elevation	5187'
Log Measured From	KB		
Drilling Measured From	KB		
Date	10/5/12		
Run Number	ONE		
Depth Driller	7900'		
Depth Logger	7840'		
Bottom Logged Interval	7822'		
Top Log Interval	3200'		
Open Hole Size	7 7/8"		
Type Fluid	NA		
Density / Viscosity	NA		
Max. Recorded Temp.	196 DEG. F		
Estimated Cement Top	NA		
Time Well Ready	NA		
Time Logger on Bottom	NA		
Equipment Number	9605		
Location	FT MORGAN		
Recorded By	TODD YOUNG		
Witnessed By	KERRY HALDE		
Borehole Record		Tubing Record	
Run Number	Bit	From	To
Casing Record	Size	Wgt/Ft	Top
Surface String			
Prot. String	5.5"	17#	SURFACE
Production String			TD
Liner			


<<< Fold Here >>>

All interpretations are opinions based on inferences from electrical or other measurements and we cannot and do not guarantee the accuracy or correctness of any interpretation, and we shall not, except in the case of gross or willful negligence on our part, be liable or responsible for any loss, costs, damages, or expenses incurred or sustained by anyone resulting from any interpretation made by any of our officers, agents or employees. These interpretations are also subject to our general terms and conditions set out in our current Price Schedule.

## Comments

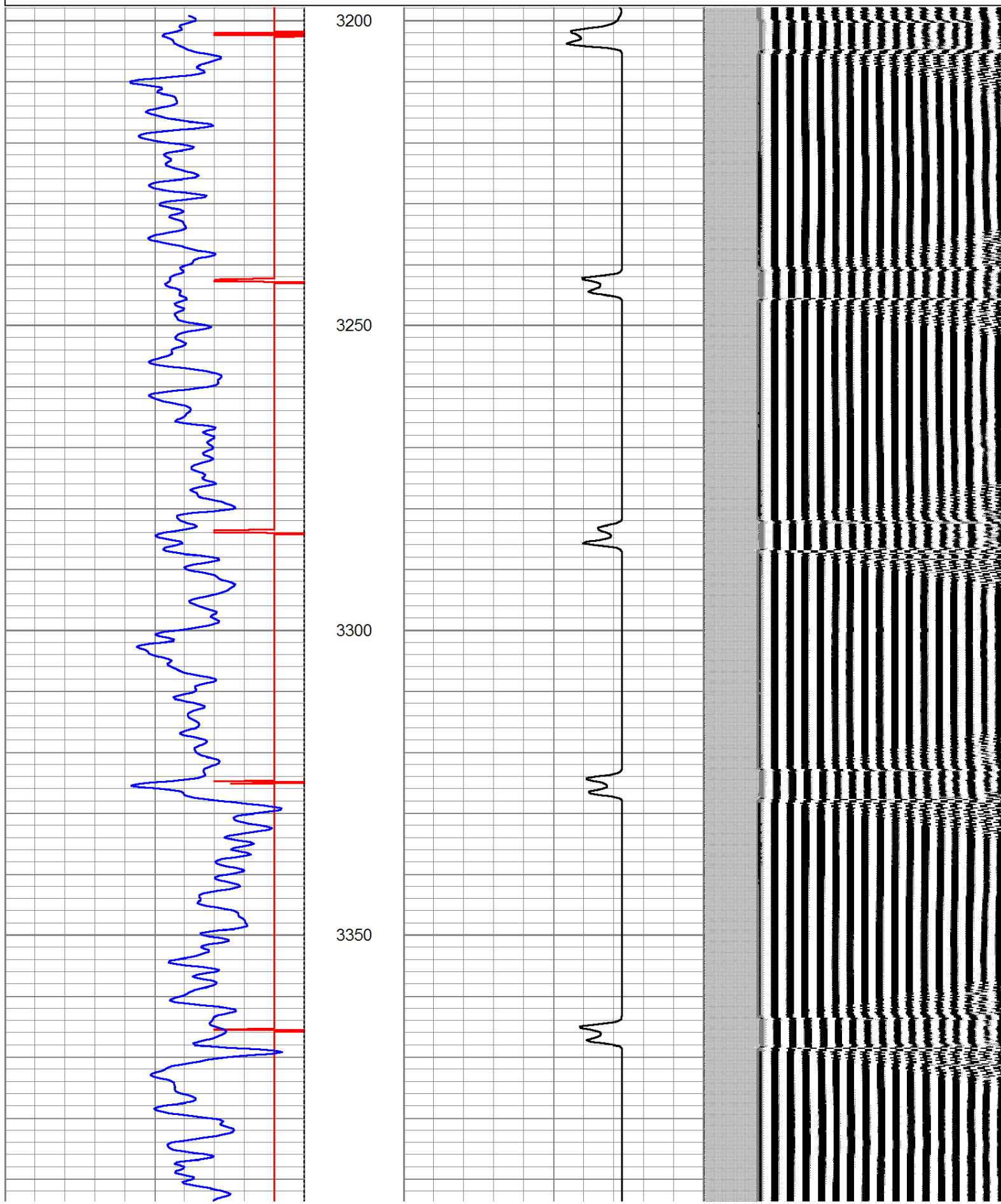
SO # 203118

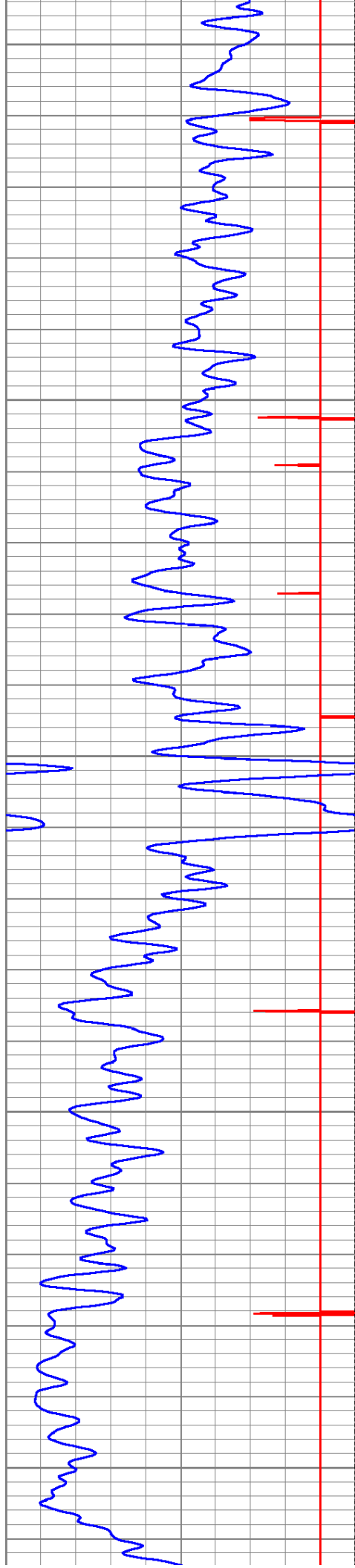
THANK YOU FOR USING  
PIONEER ENERGY SERVICES

Sensor	Offset (ft)	Schematic	Description	Len (ft)	OD (in)	Wt (lb)
CCL	19.31		CCL-titan01 (01t)	1.92	2.75	



9	Collar Locator	-1	LTEN	0	Amplified Amplitude (mV)	30	200	Variable Density	1200
0	Gamma Ray (GAPI)	200	0	(lb)2000	0	Amplitude (mV)	100		





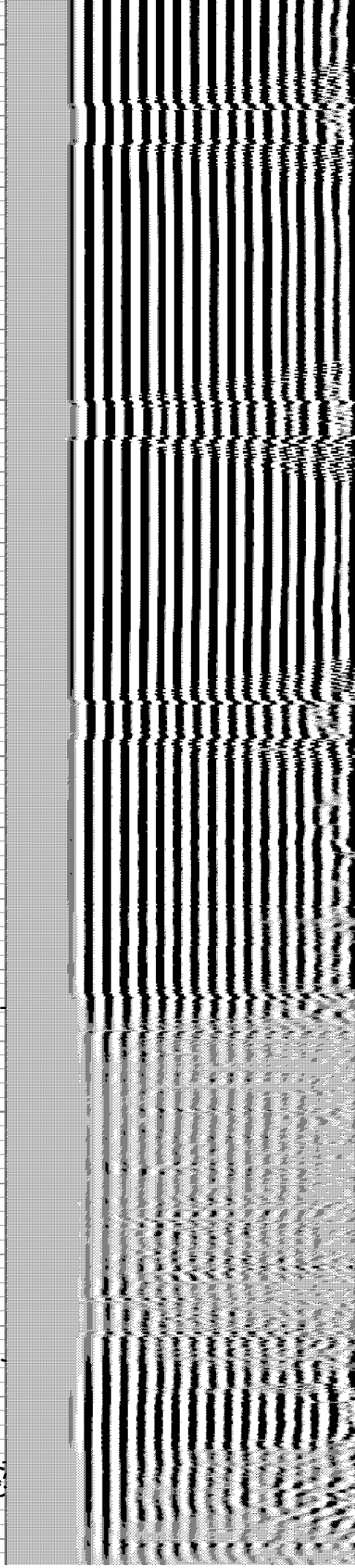
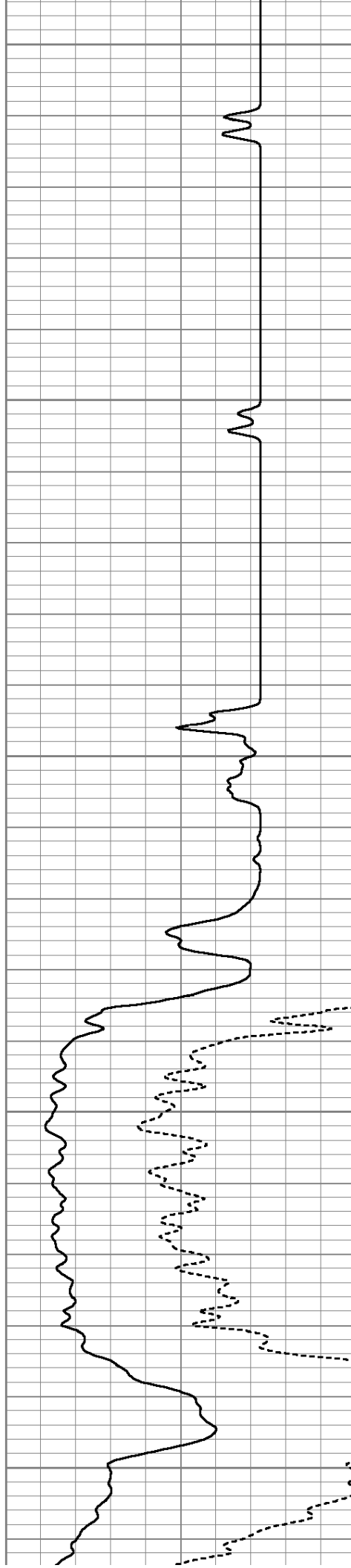
3400

3450

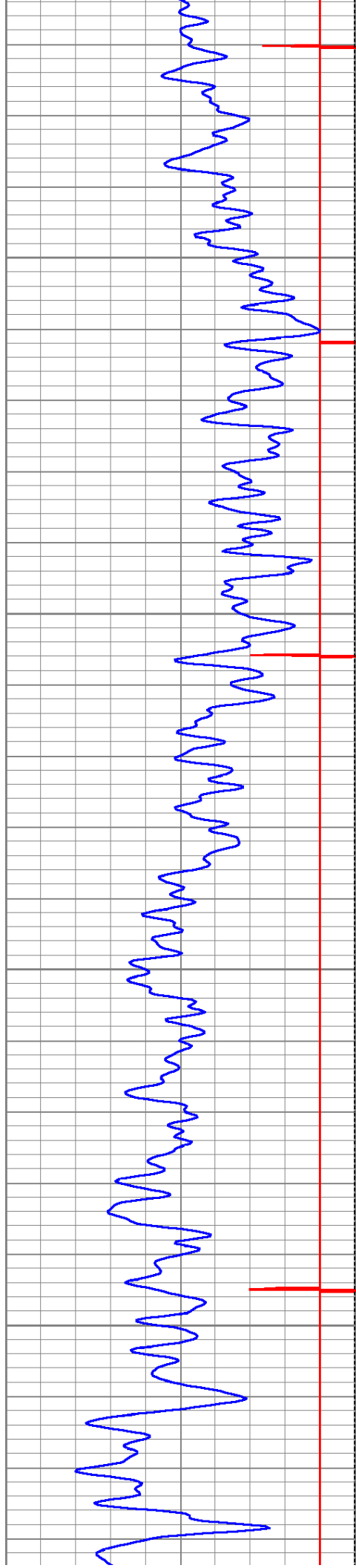
3500

3550

3600





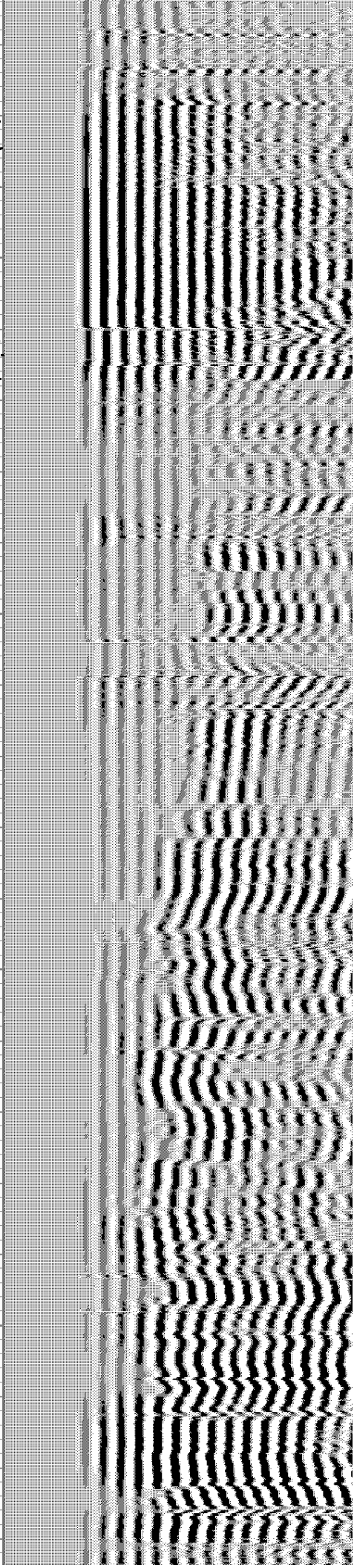
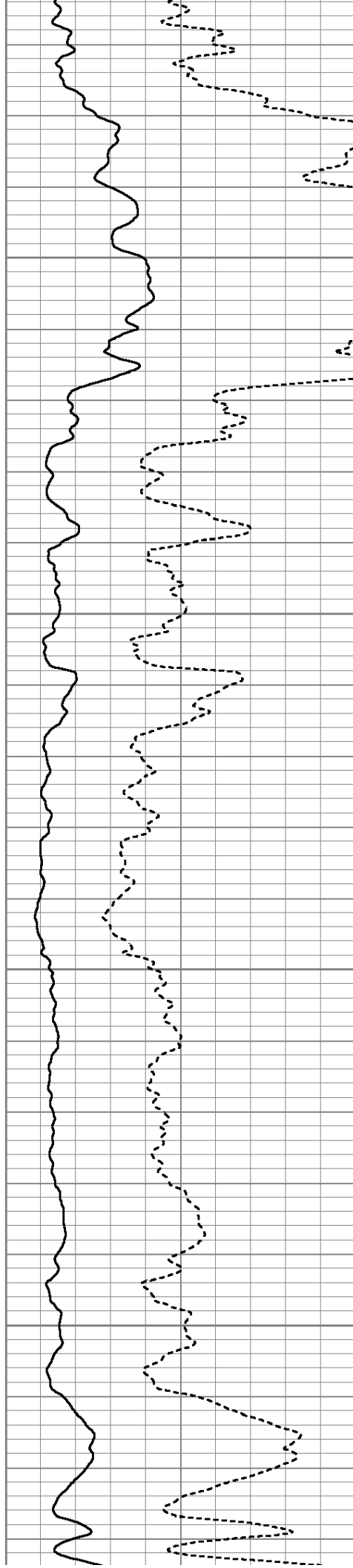


3650

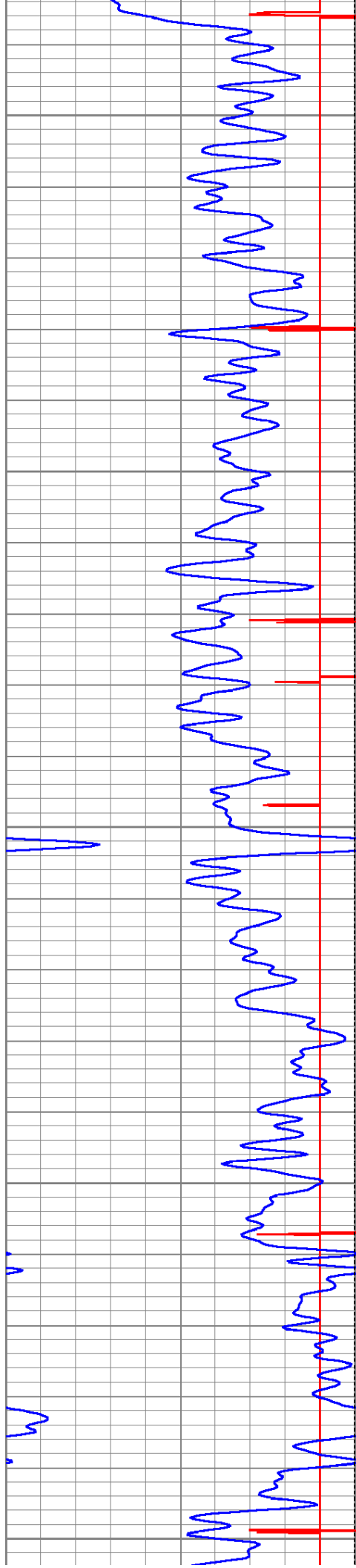
3700

3750

3800







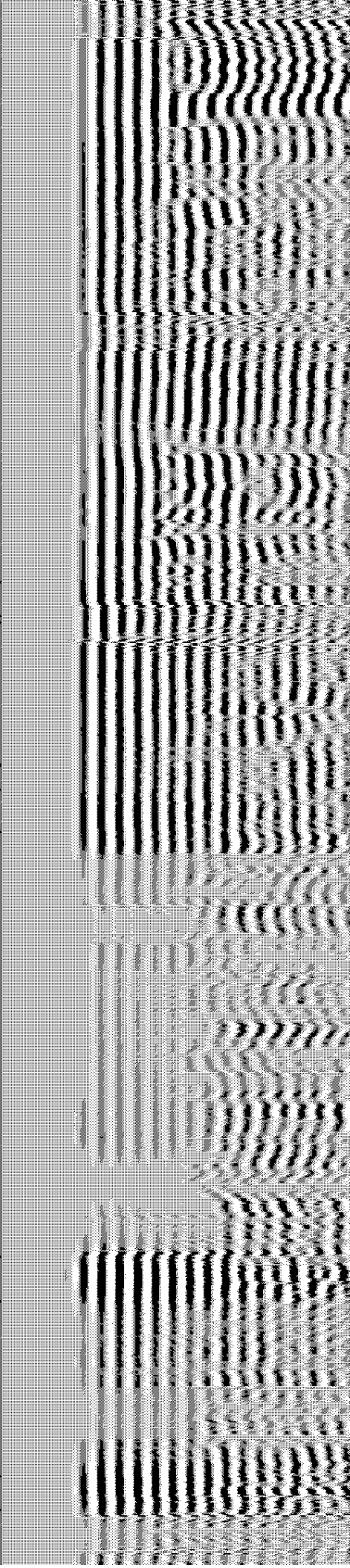
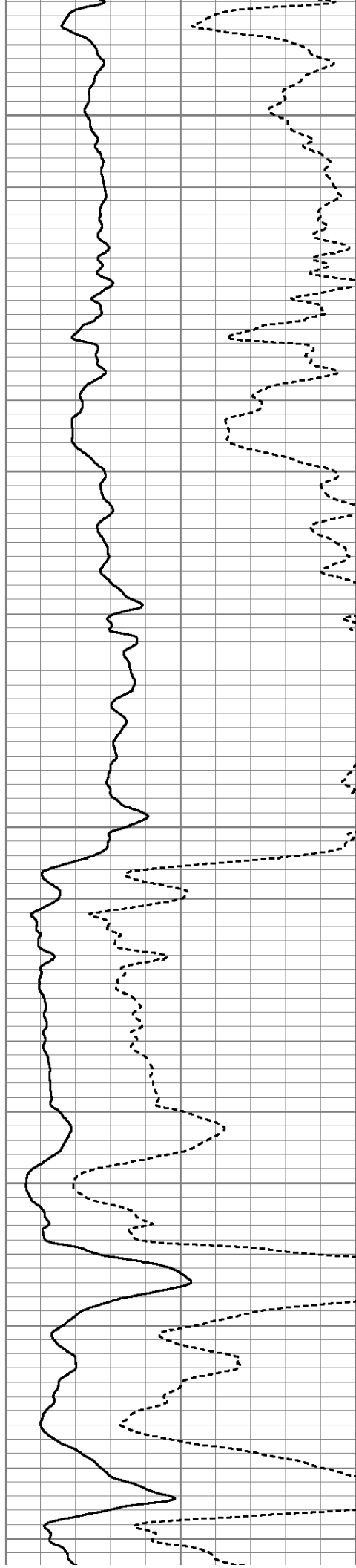
3850

3900

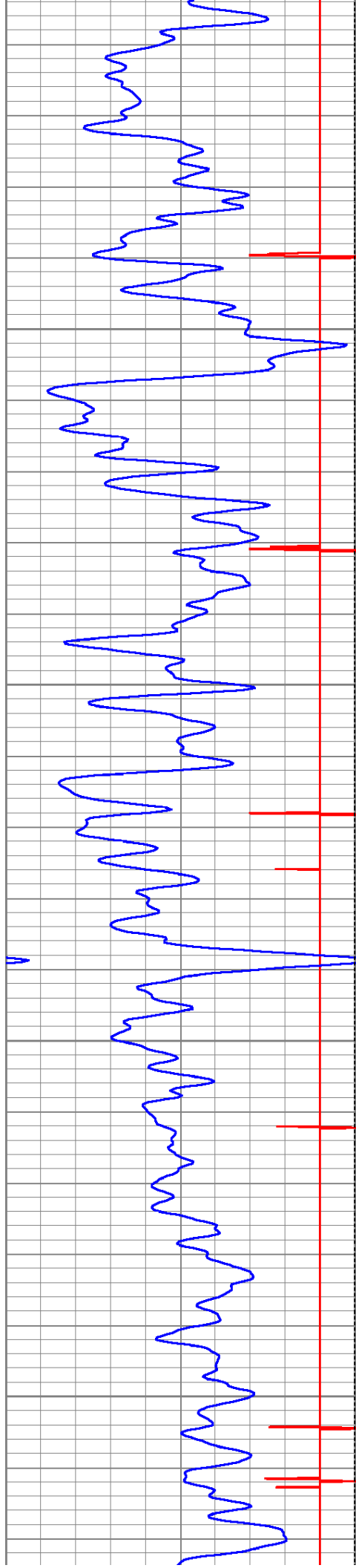
3950

4000

4050





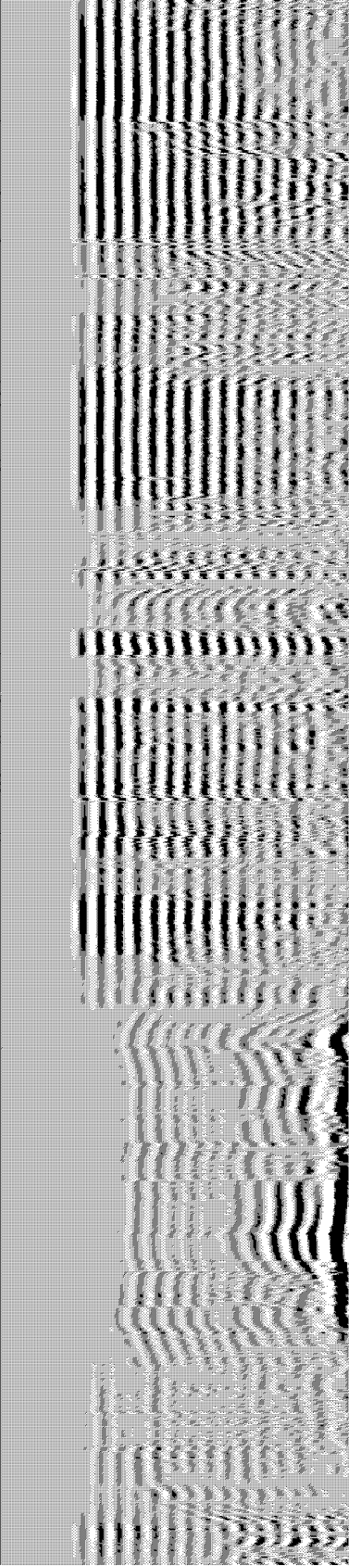
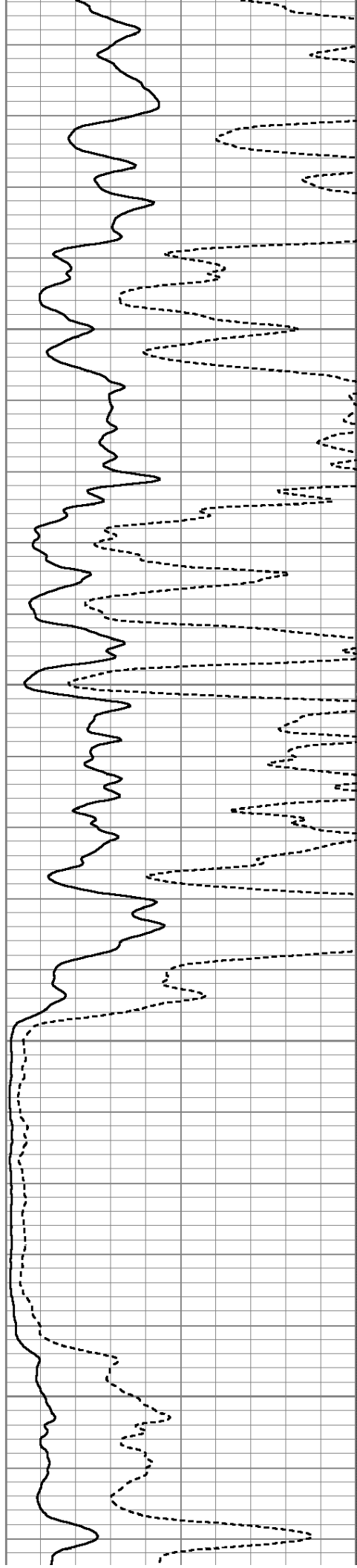


4100

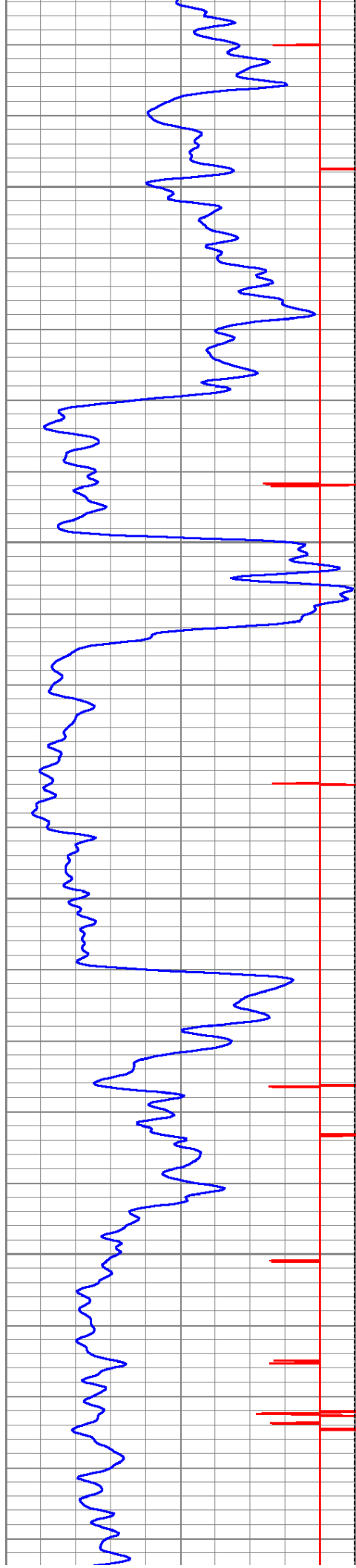
4150

4200

4250





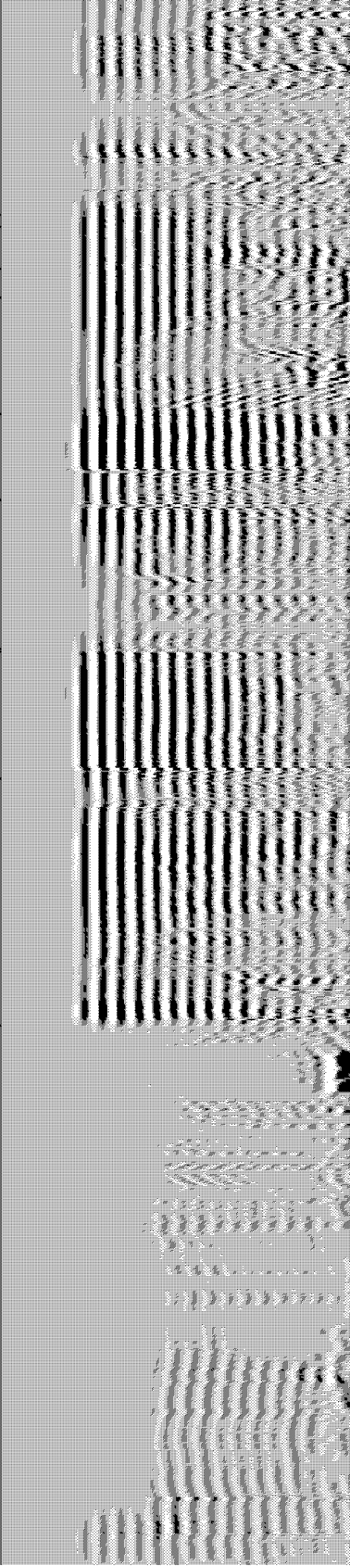
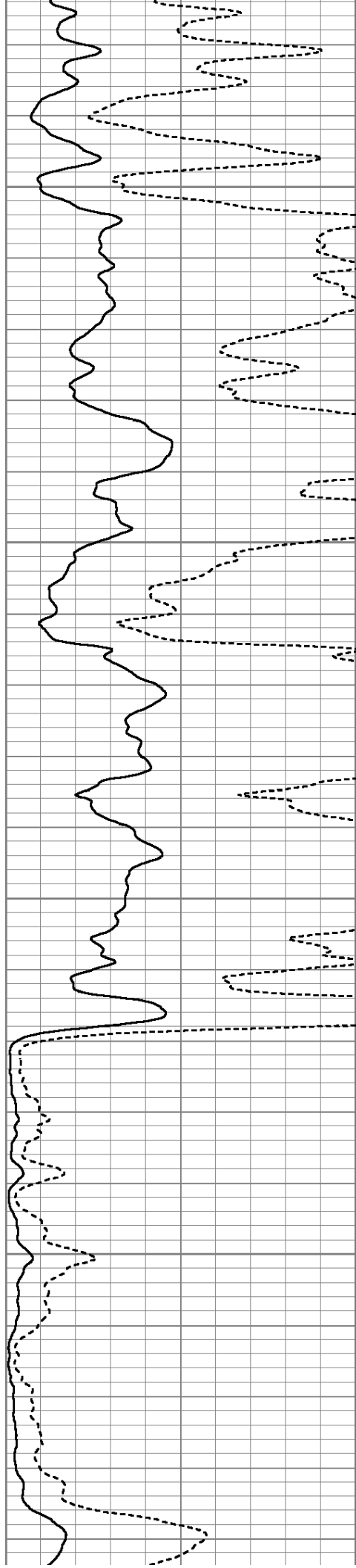


4300

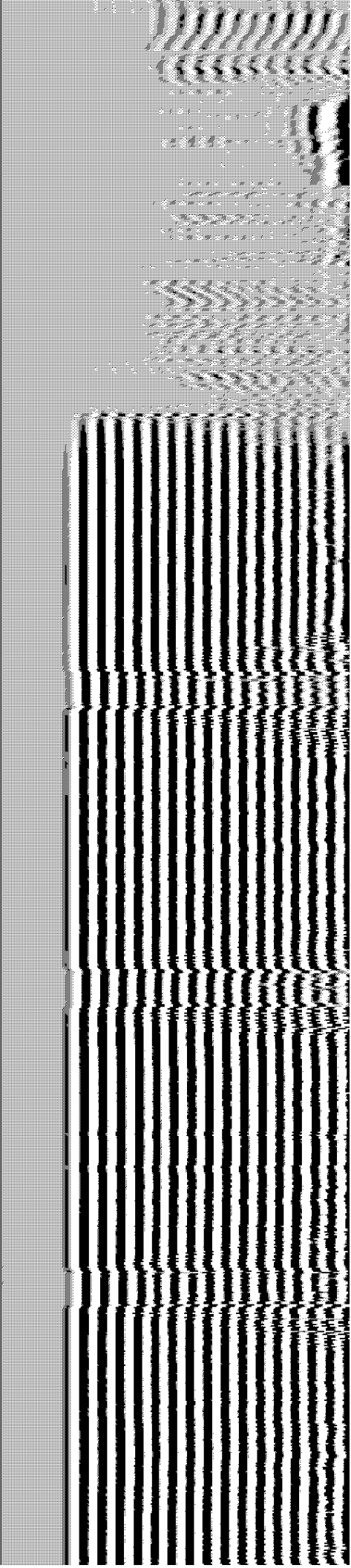
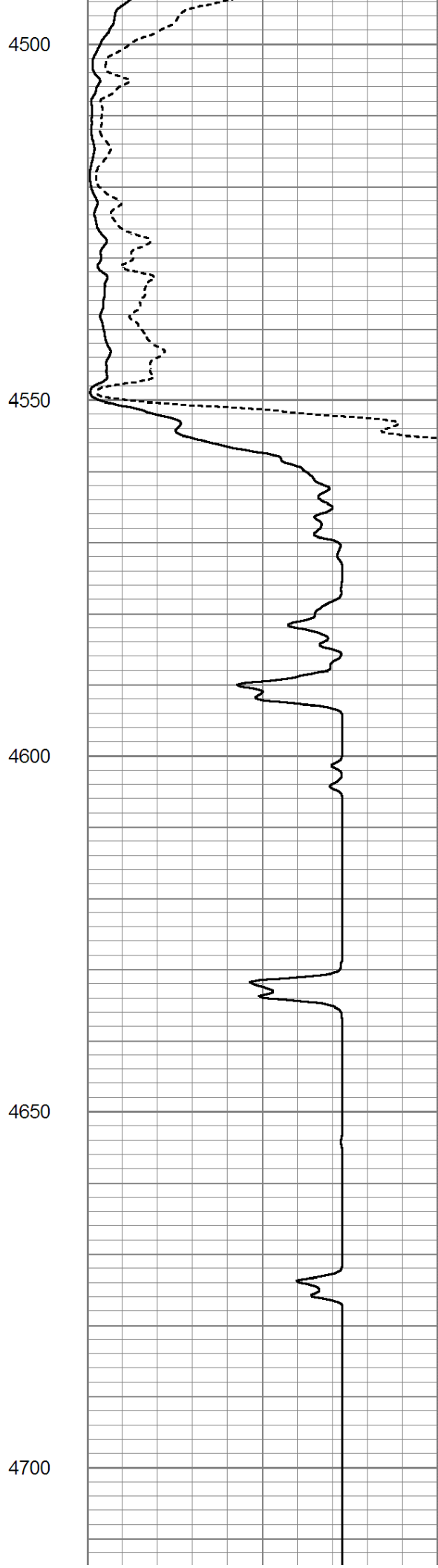
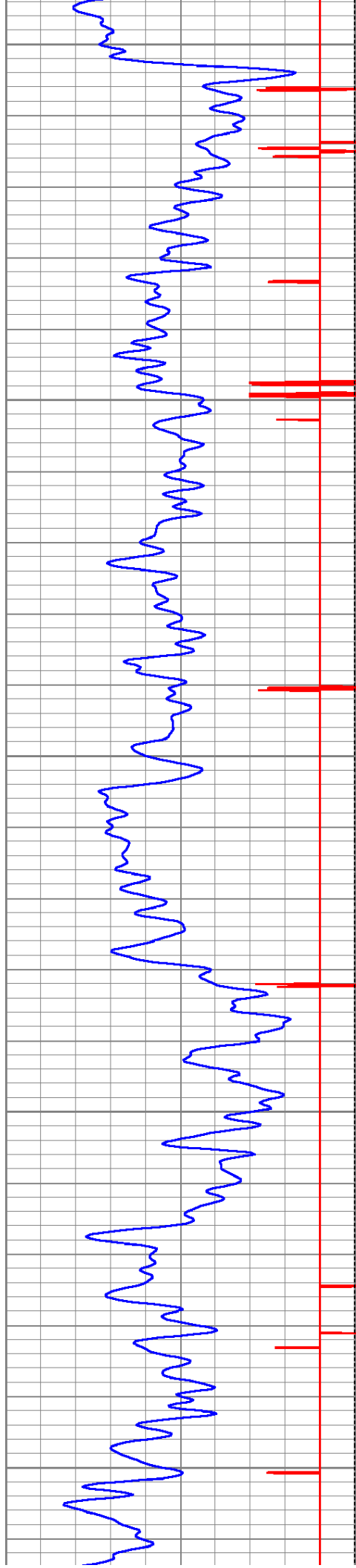
4350

4400

4450







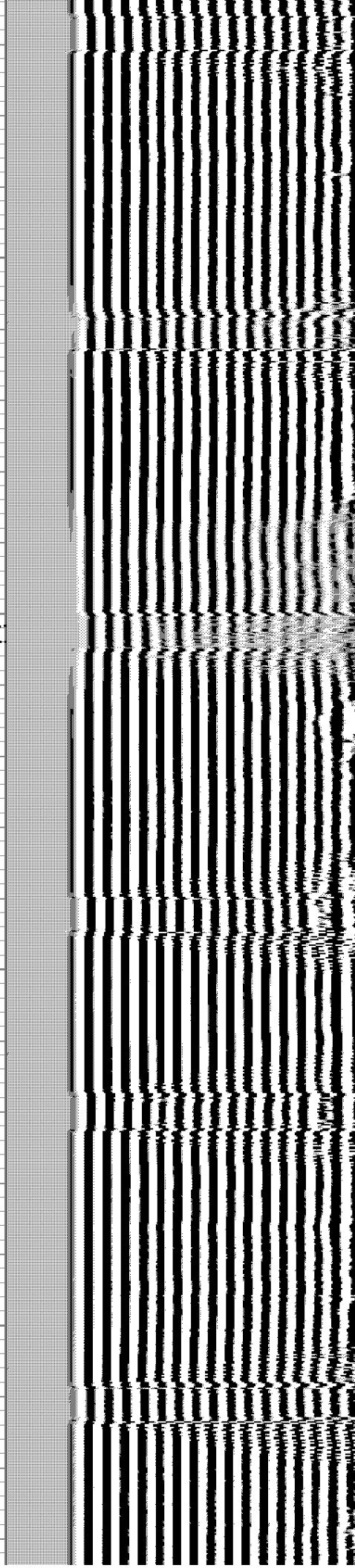
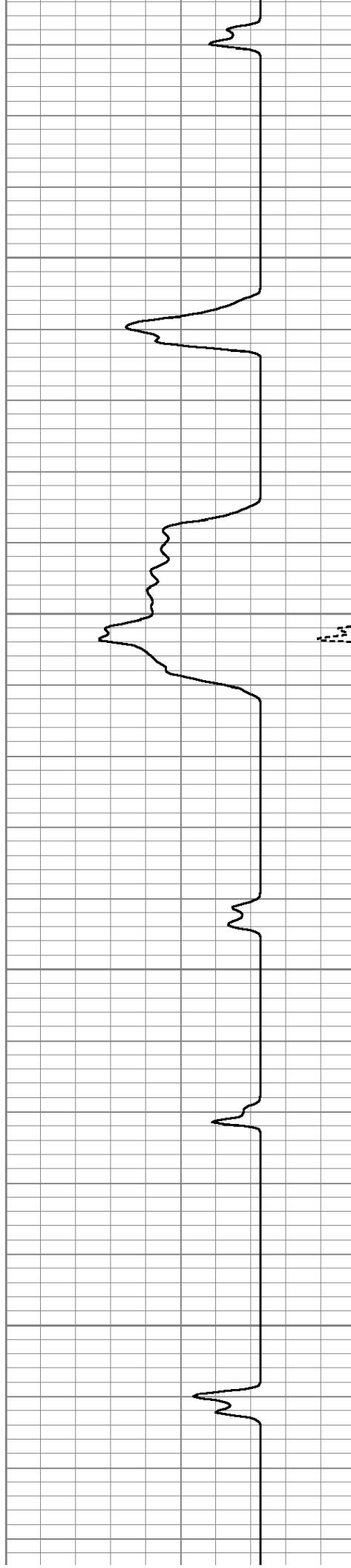


4750

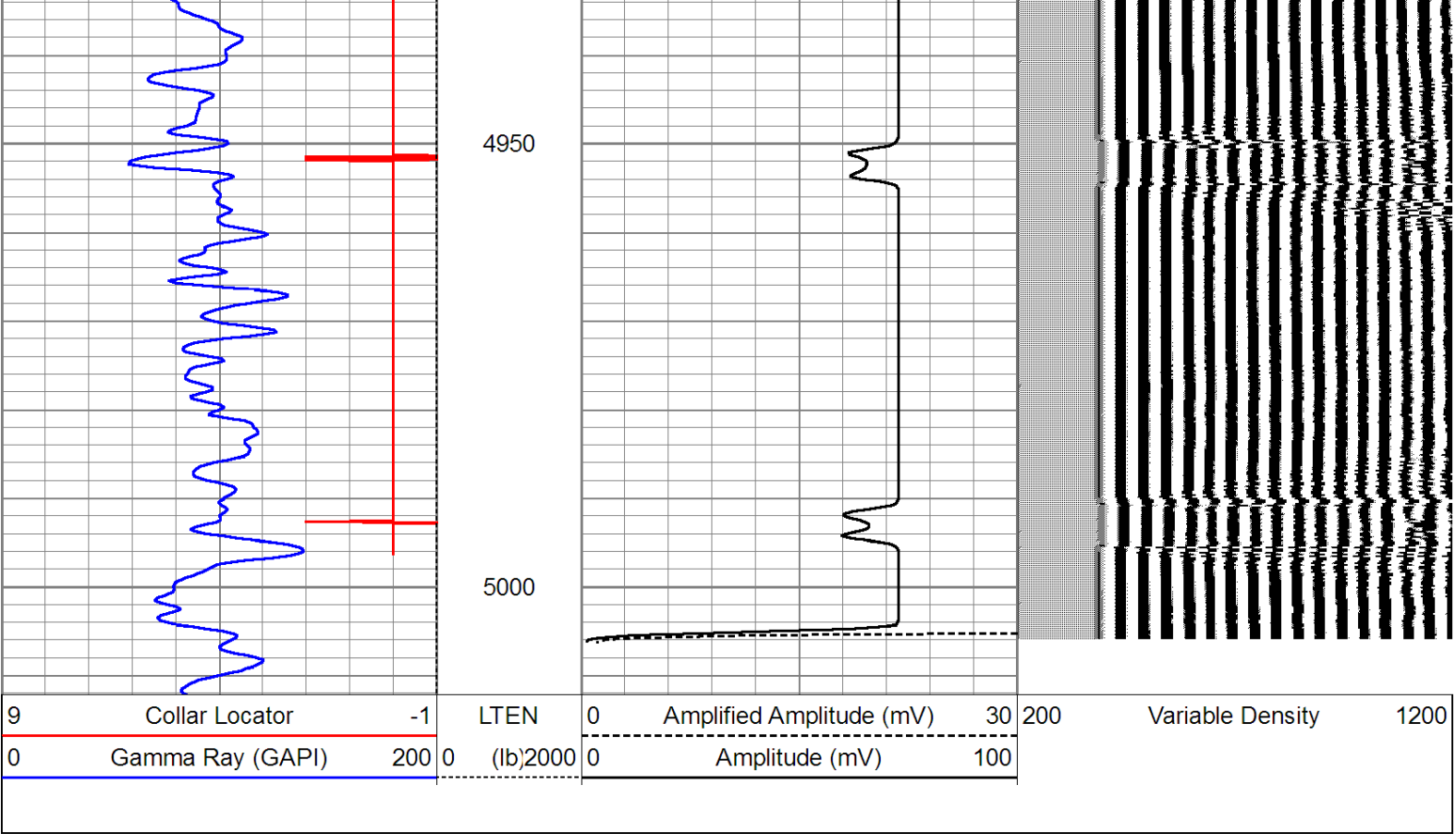
4800

4850

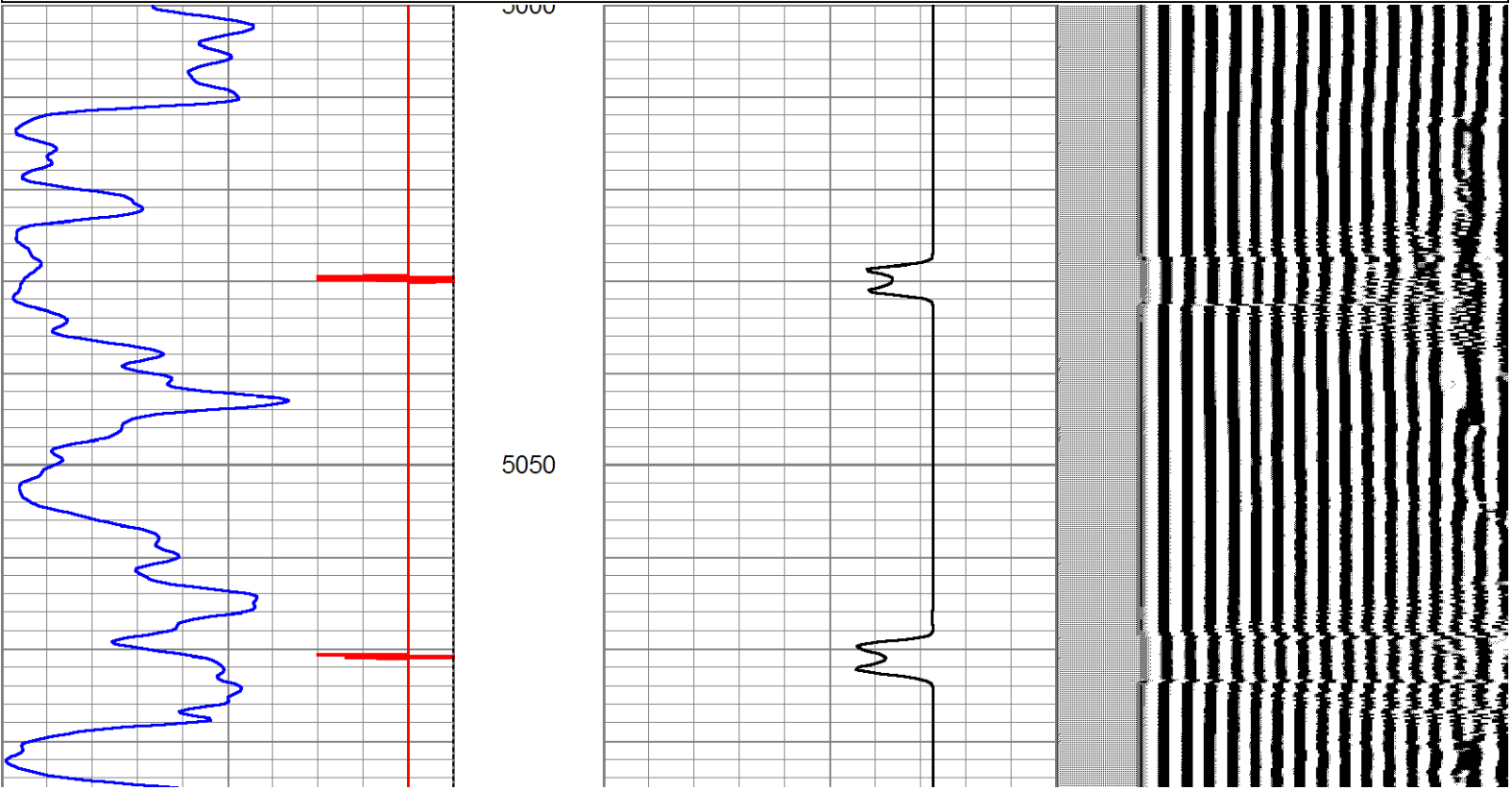
4900

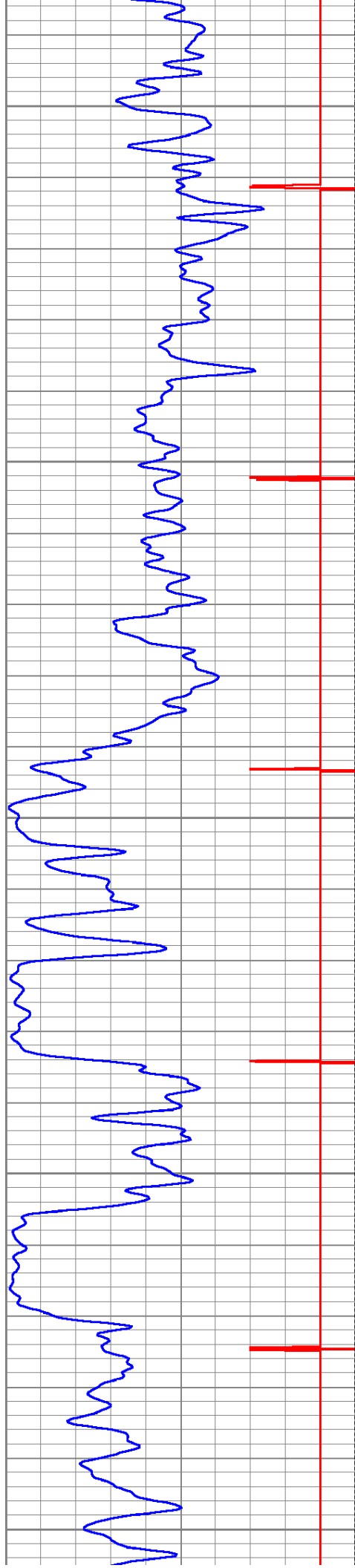






<div>Database File: mahalo #3.db</div> <div>Dataset Pathname: pass3</div> <div>Presentation Format: cbl_dr</div> <div>Dataset Creation: Fri Oct 05 08:04:07 2012 by Log SCH 120126</div> <div>Charted by: Depth in Feet scaled 1:240</div>									
9	Collar Locator	-1	LTEN	0	Amplified Amplitude (mV)	30	200	Variable Density	1200
0	Gamma Ray (GAPI)	200	0	(lb)2000	0	Amplitude (mV)	100		





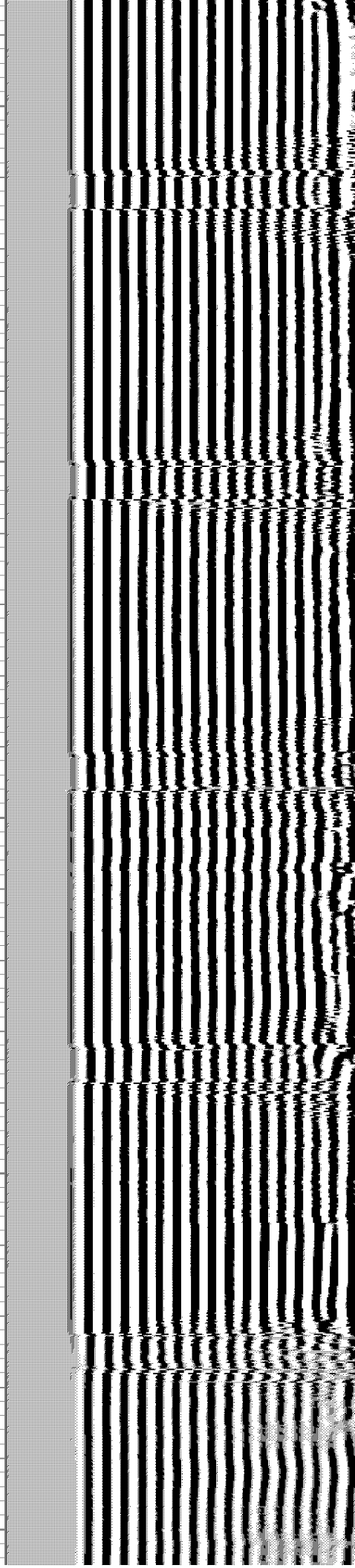
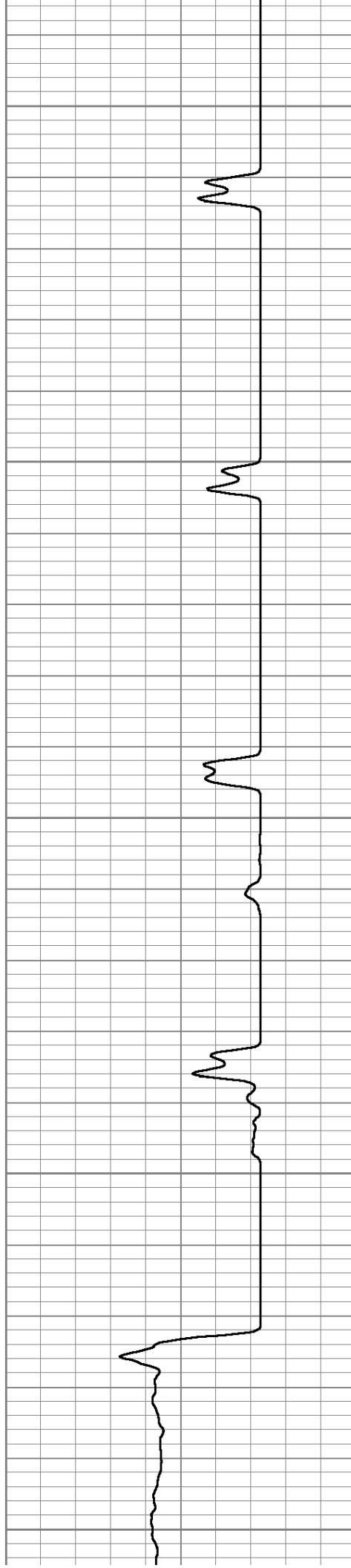
5100

5150

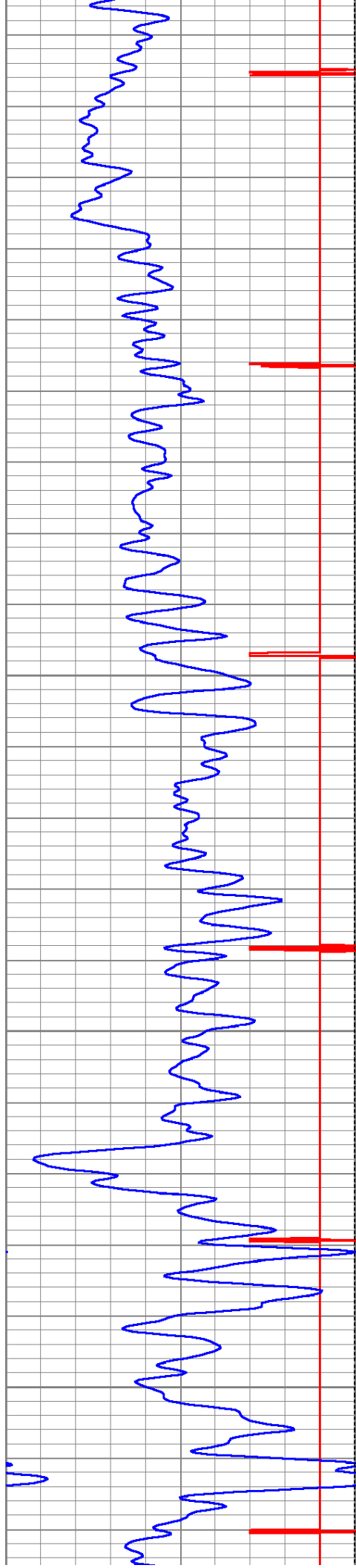
5200

5250

5300





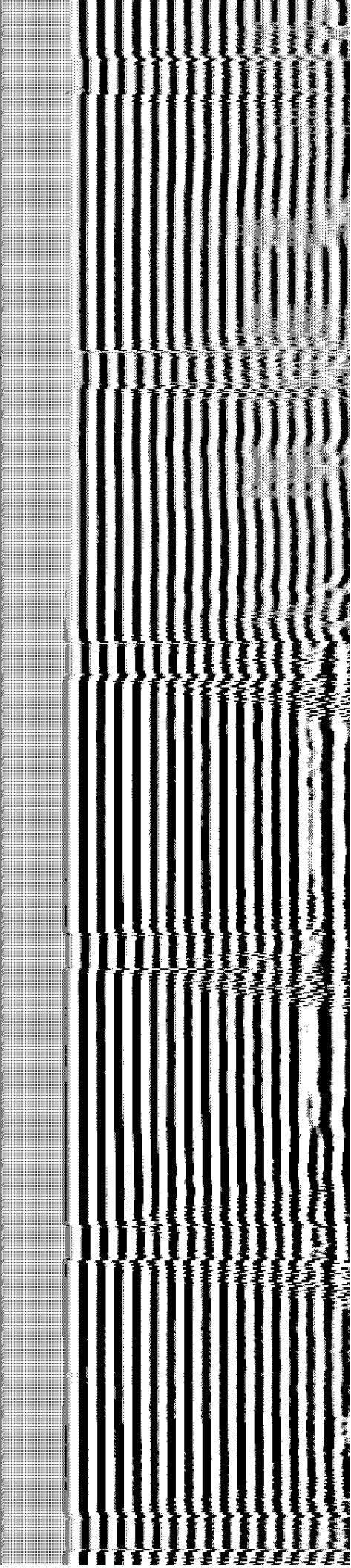
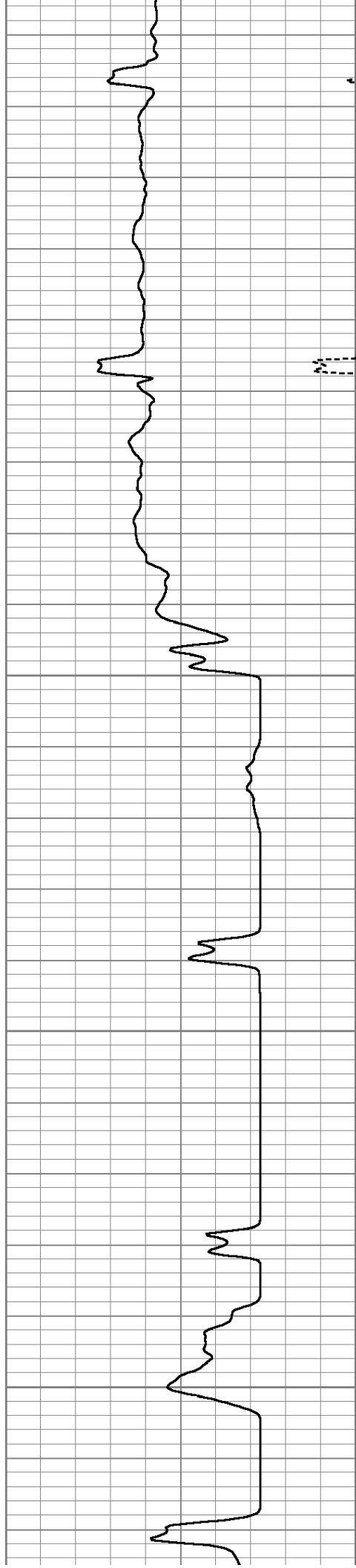


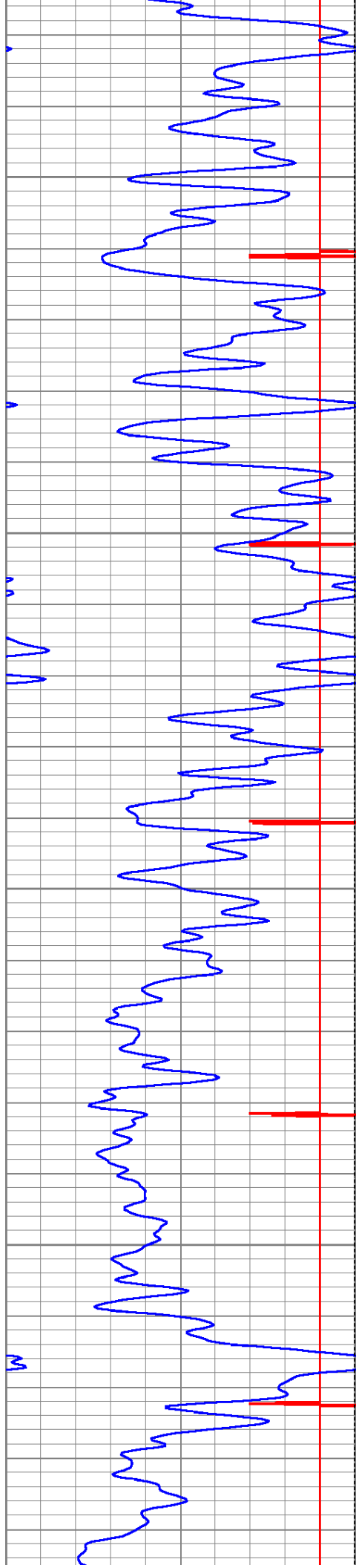
5350

5400

5450

5500



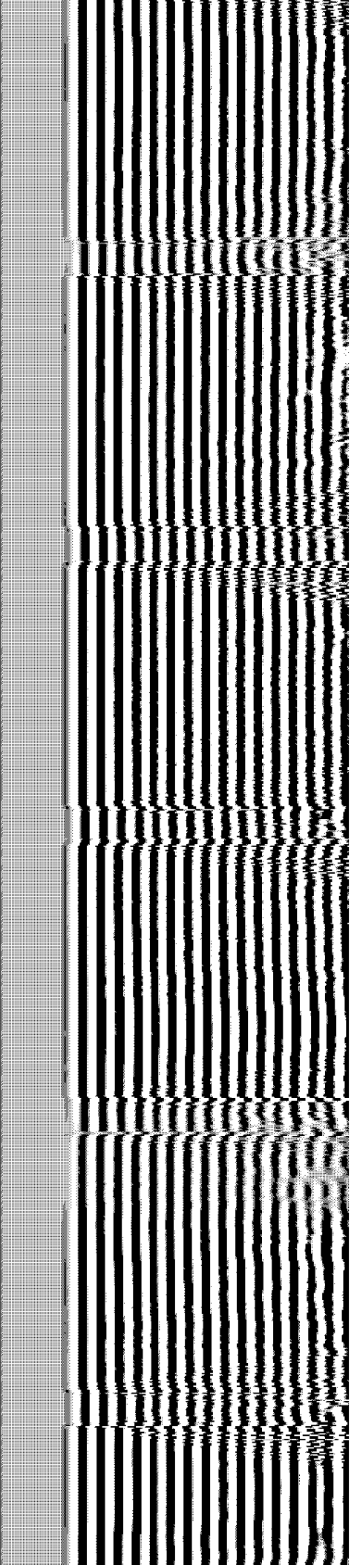
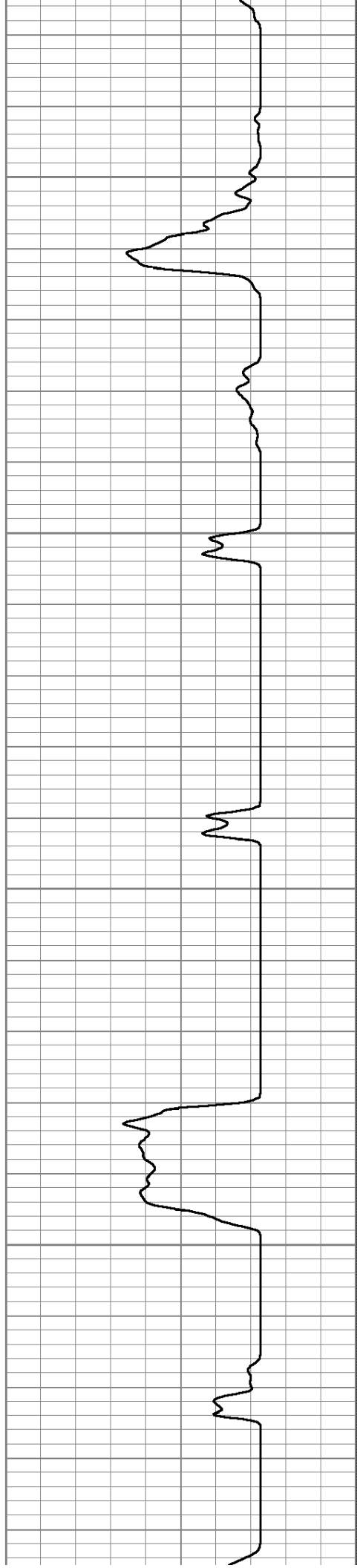


5550

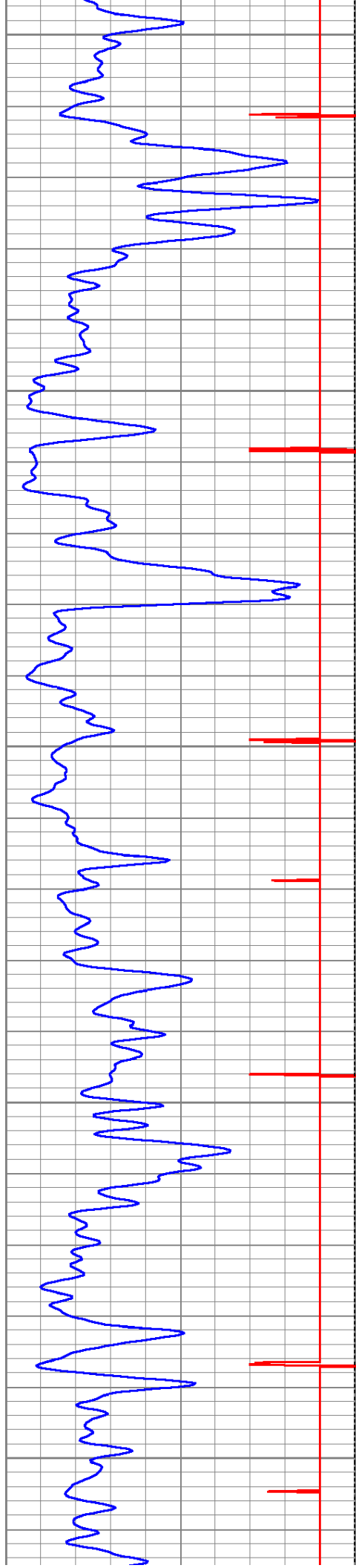
5600

5650

5700







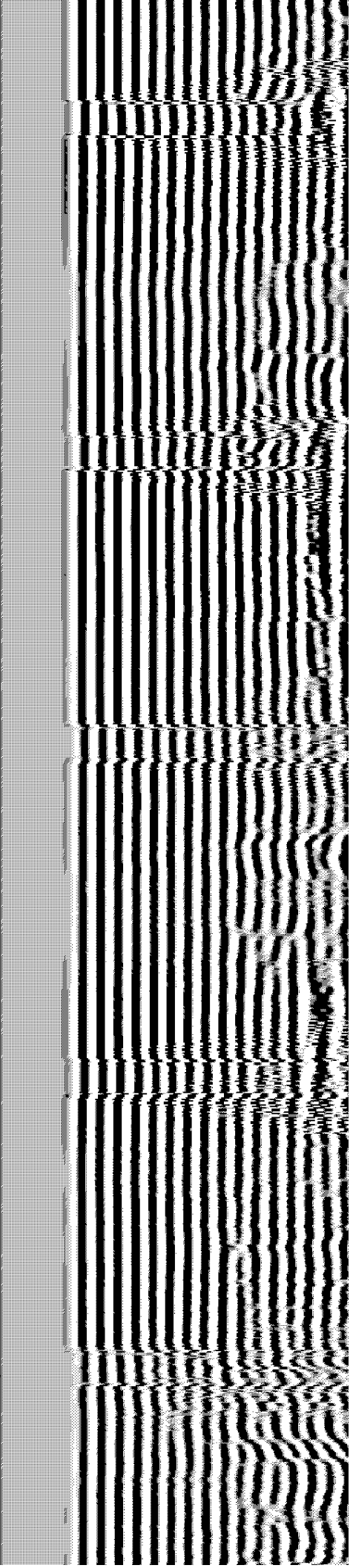
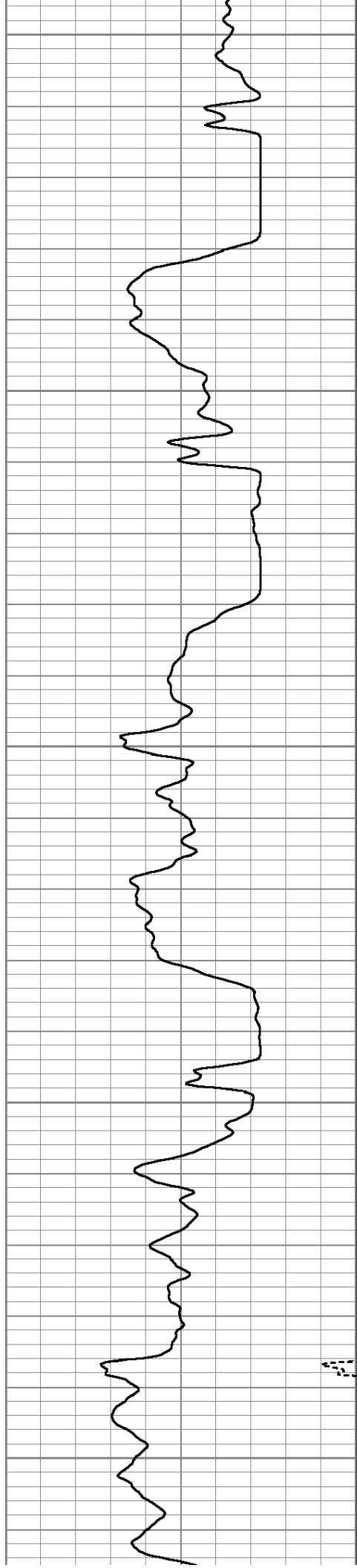
5750

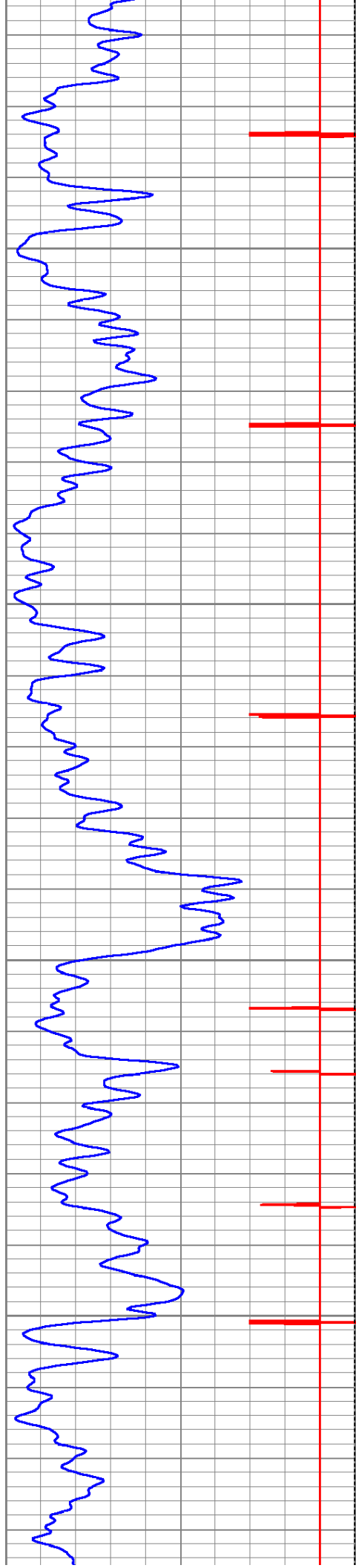
5800

5850

5900

5950



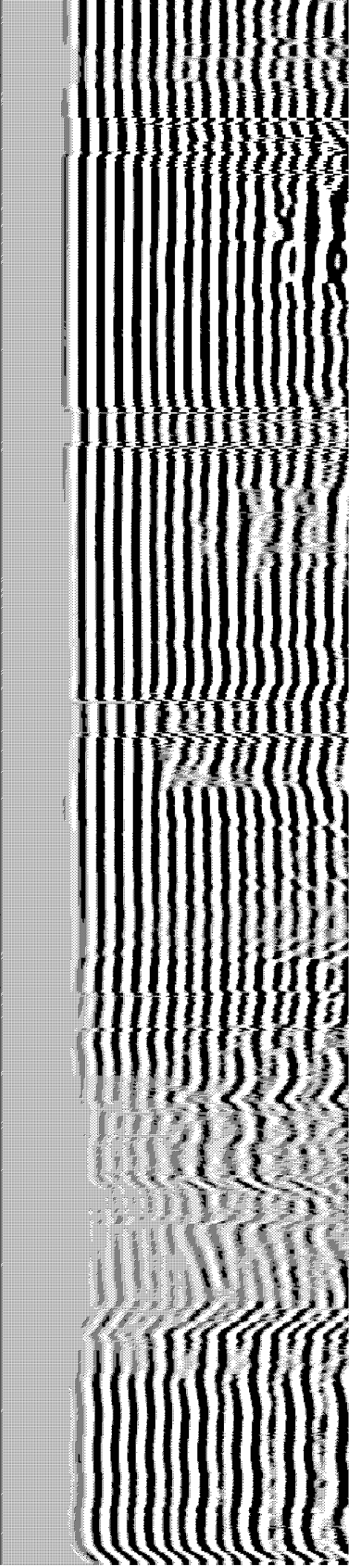
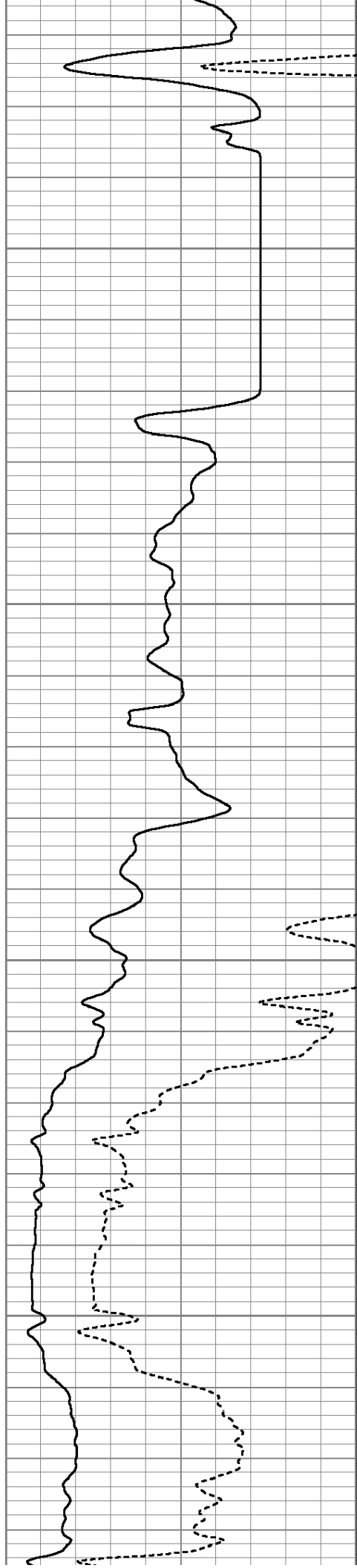


6000

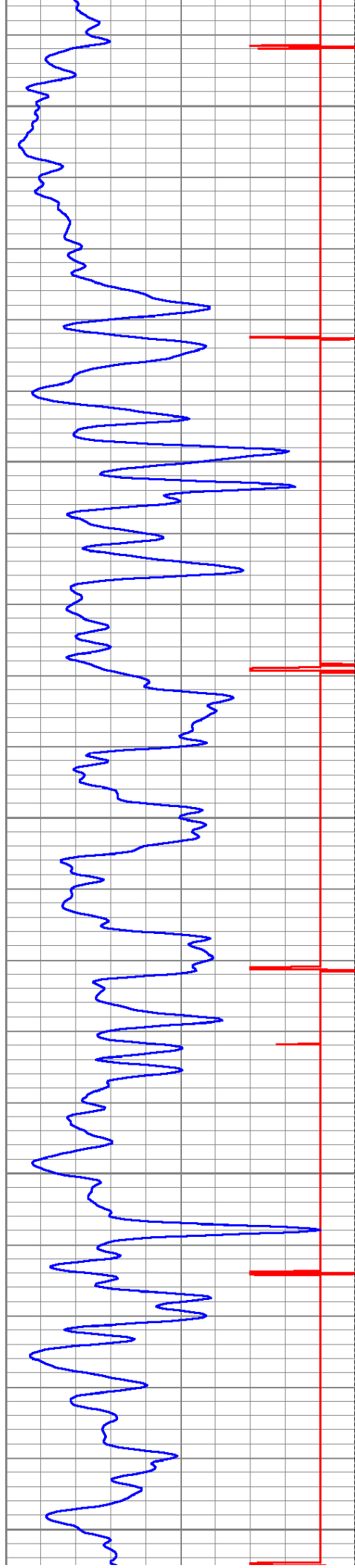
6050

6100

6150







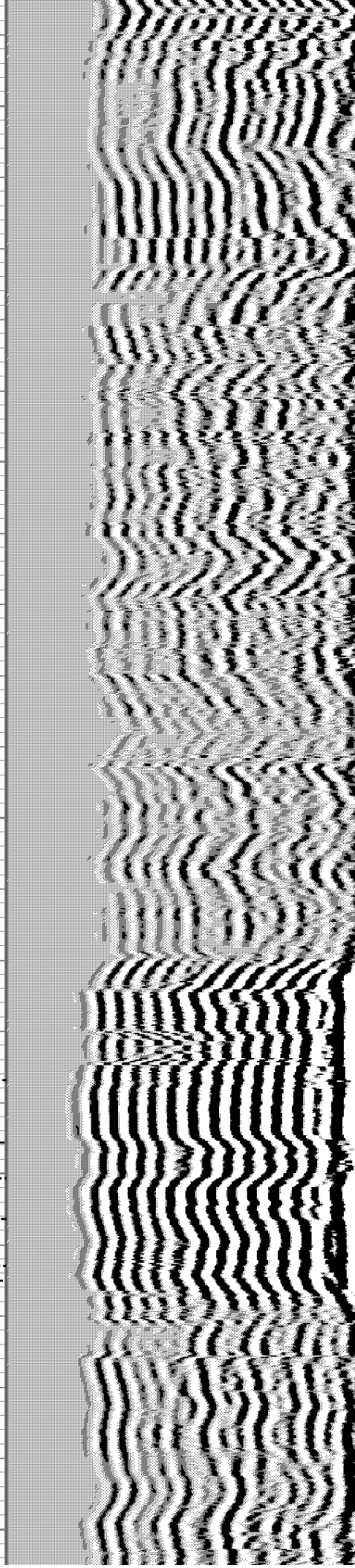
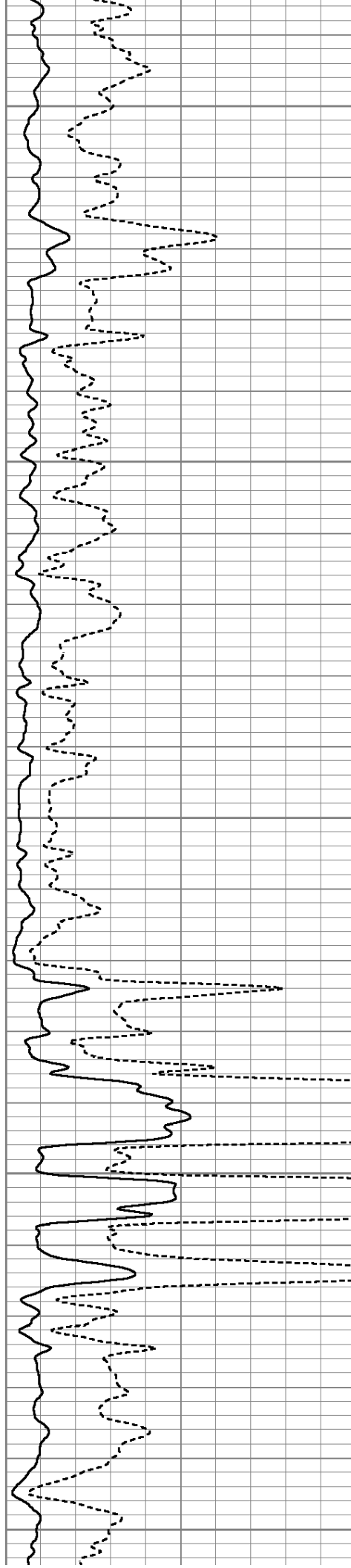
6200

6250

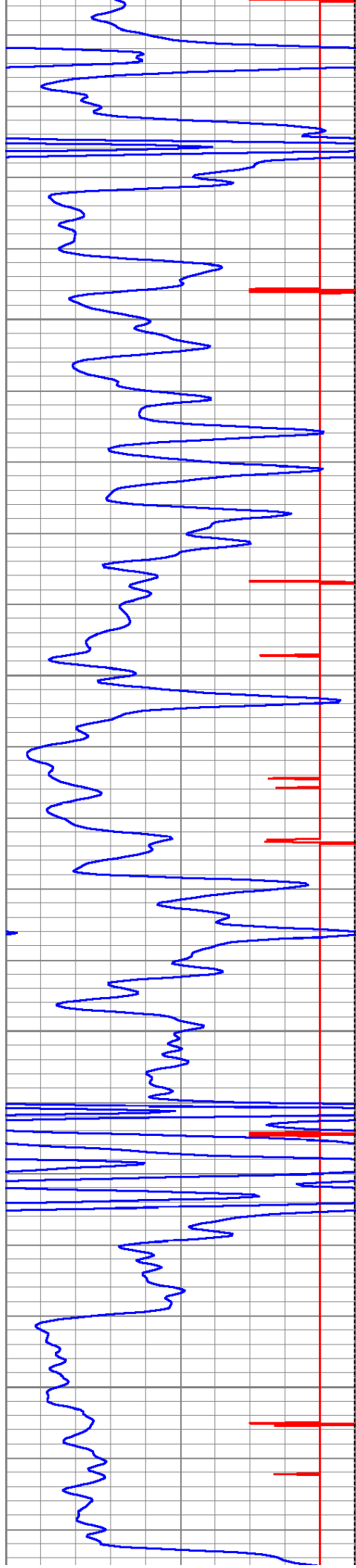
6300

6350

6400





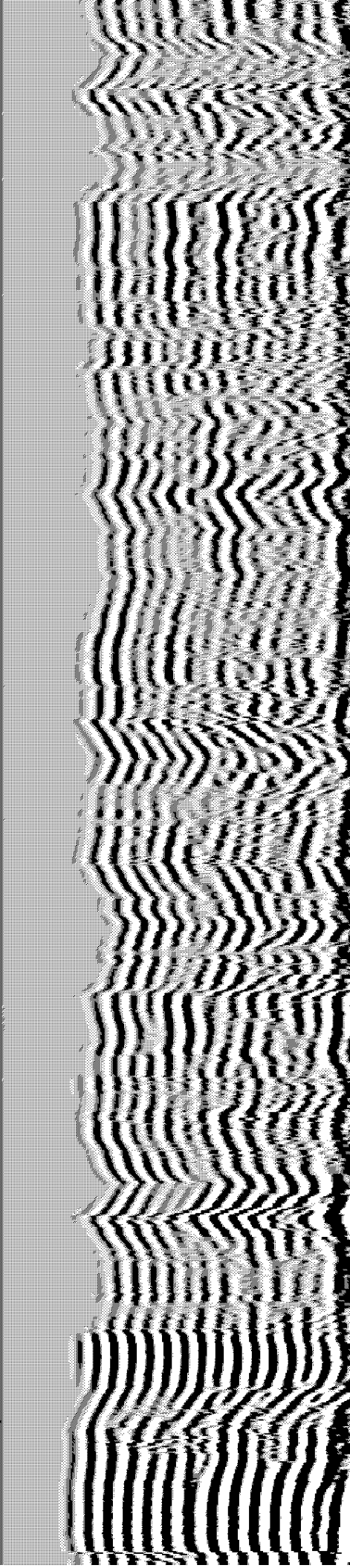
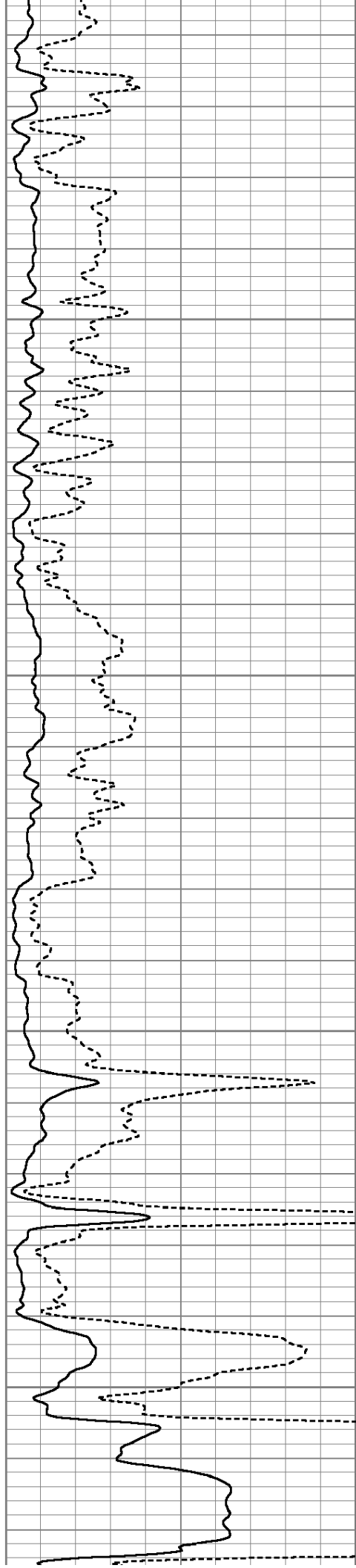


6450

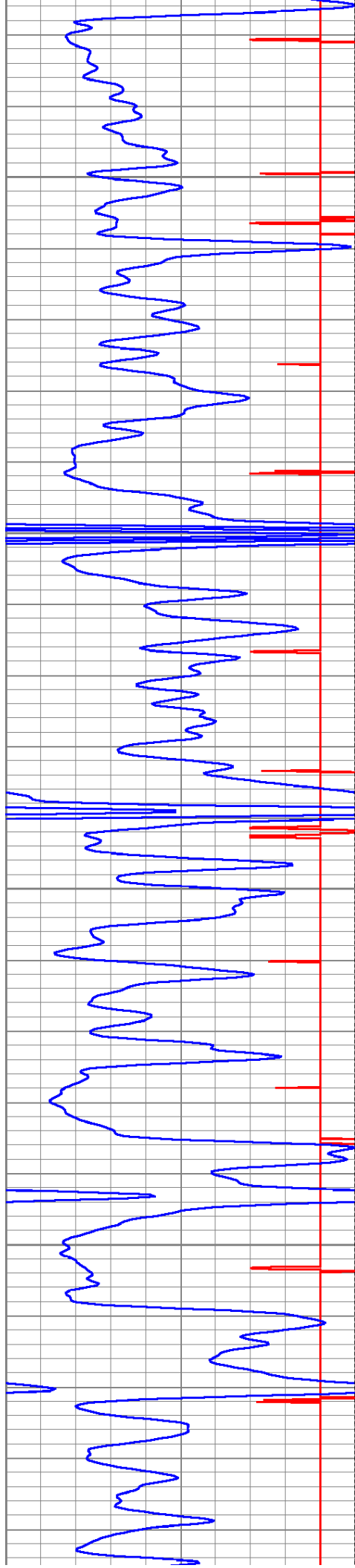
6500

6550

6600





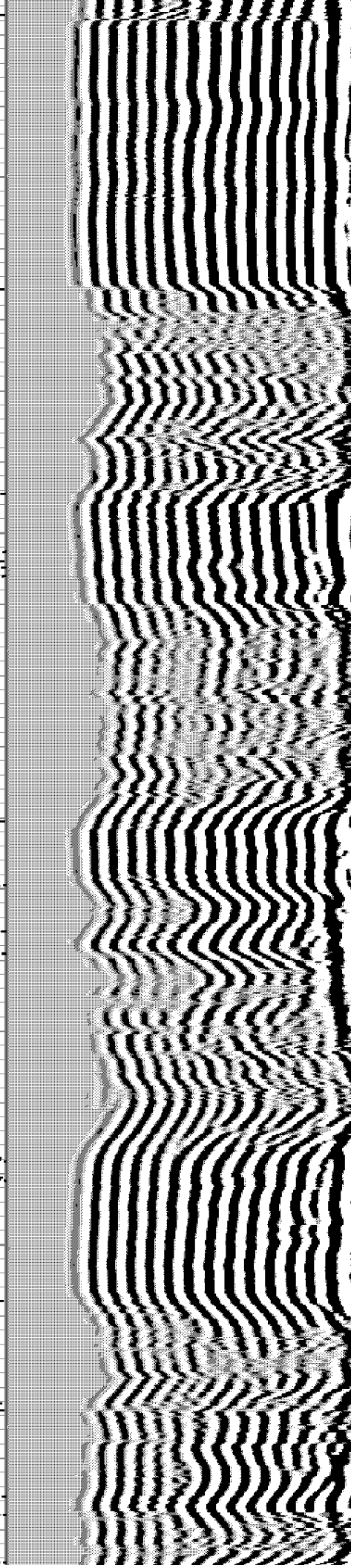
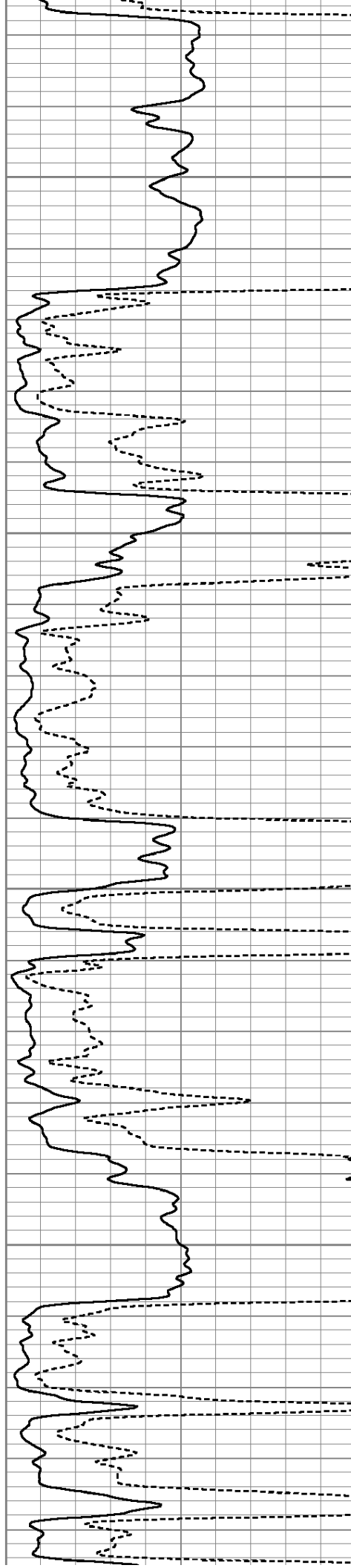


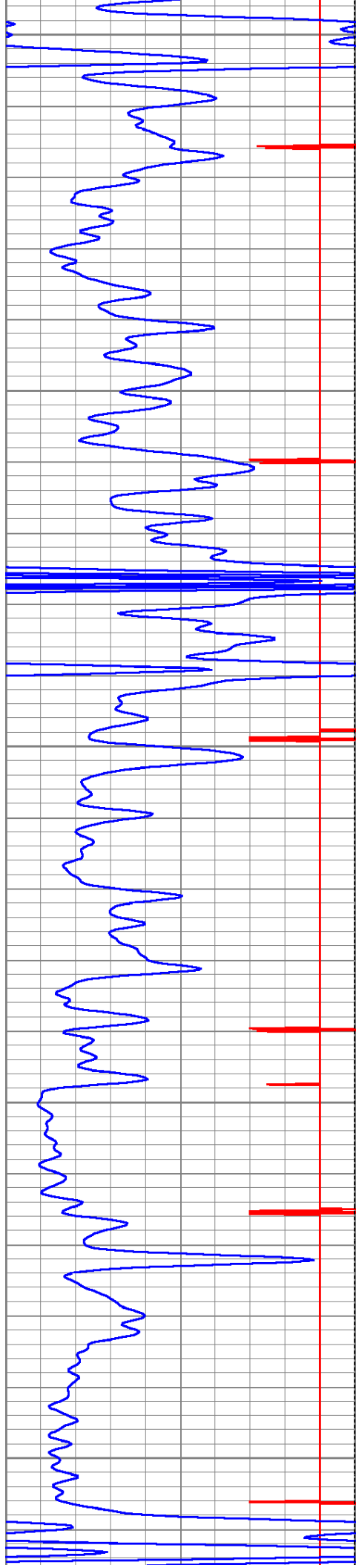
6650

6700

6750

6800





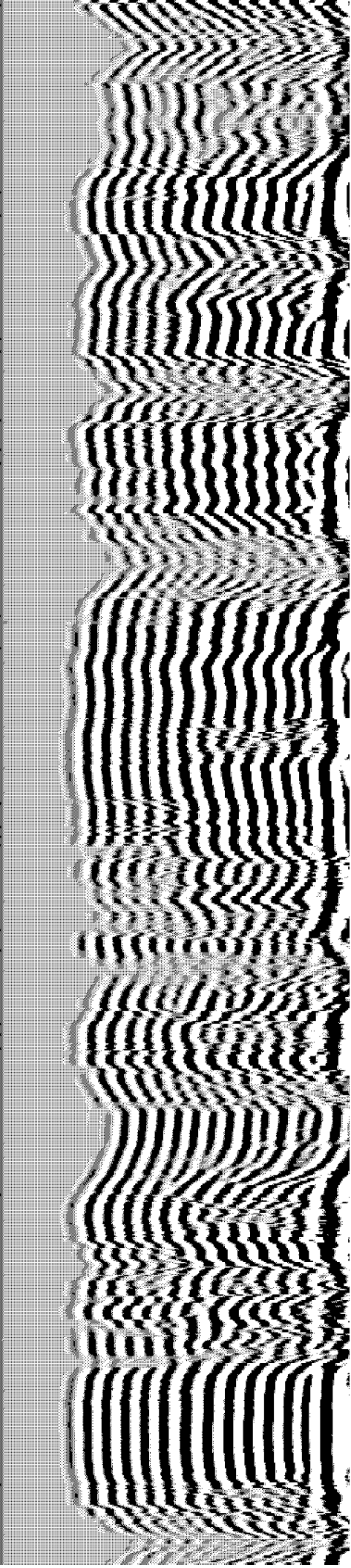
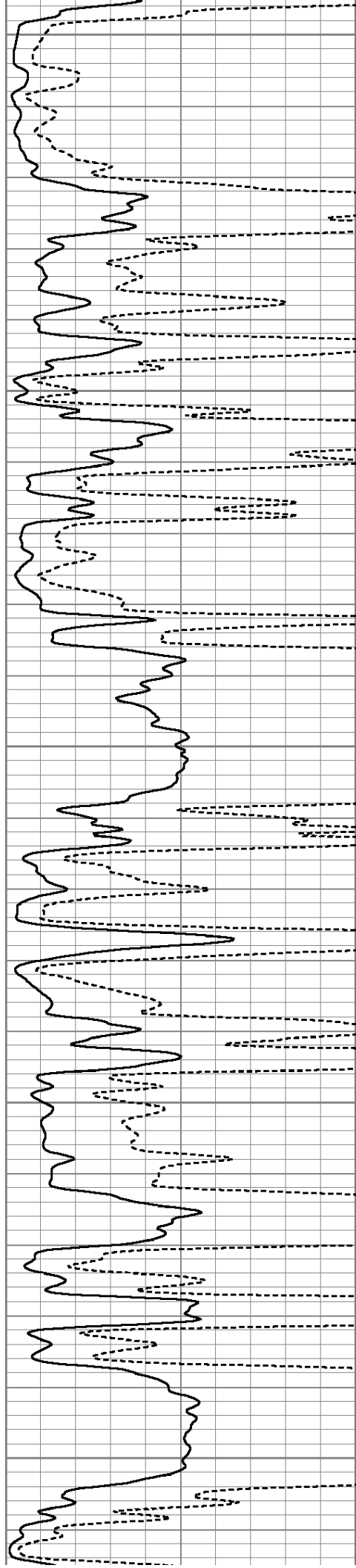
6850

6900

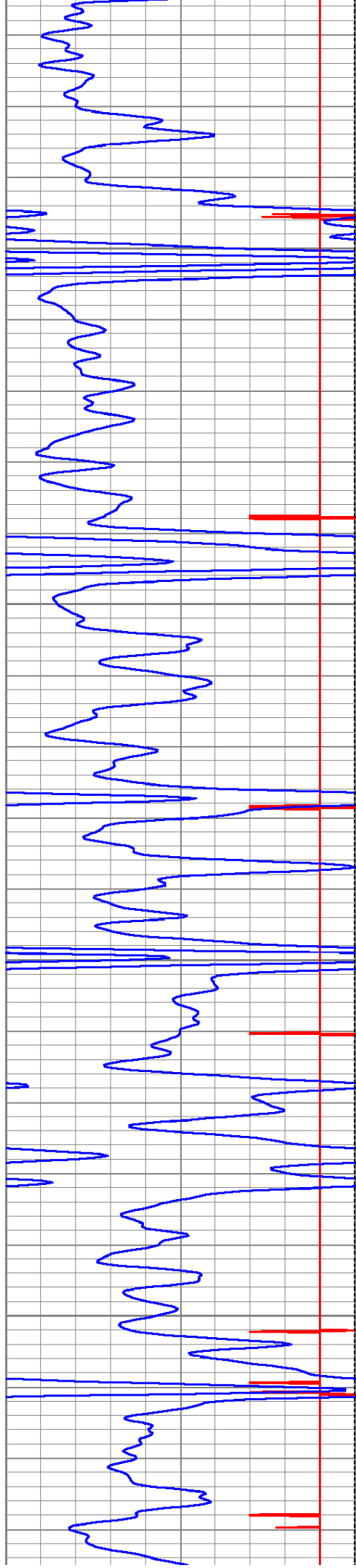
6950

7000

7050





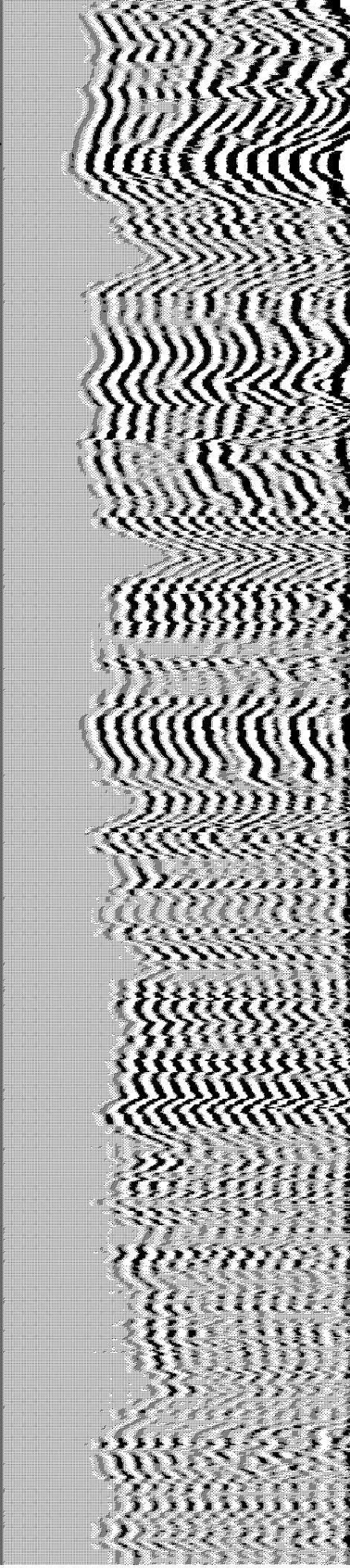
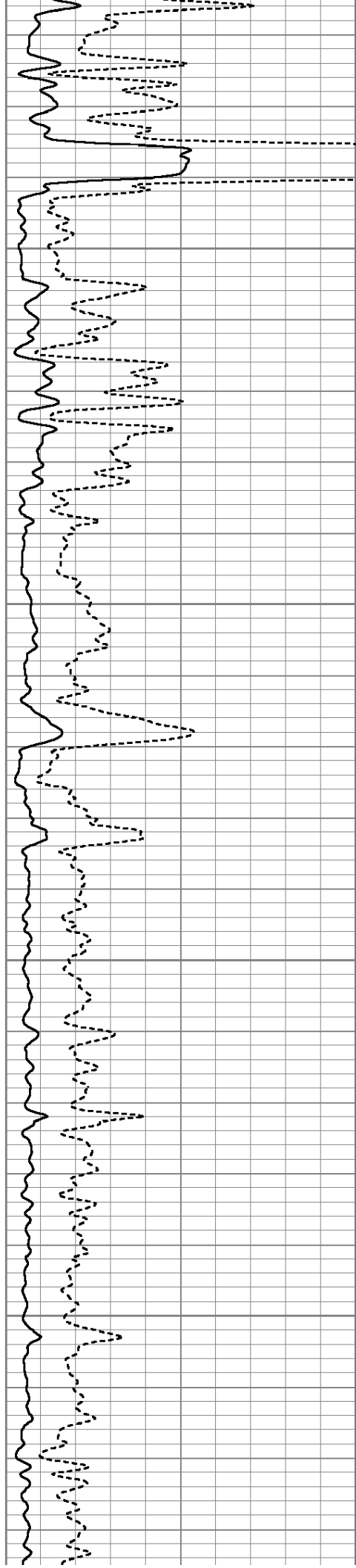


7100

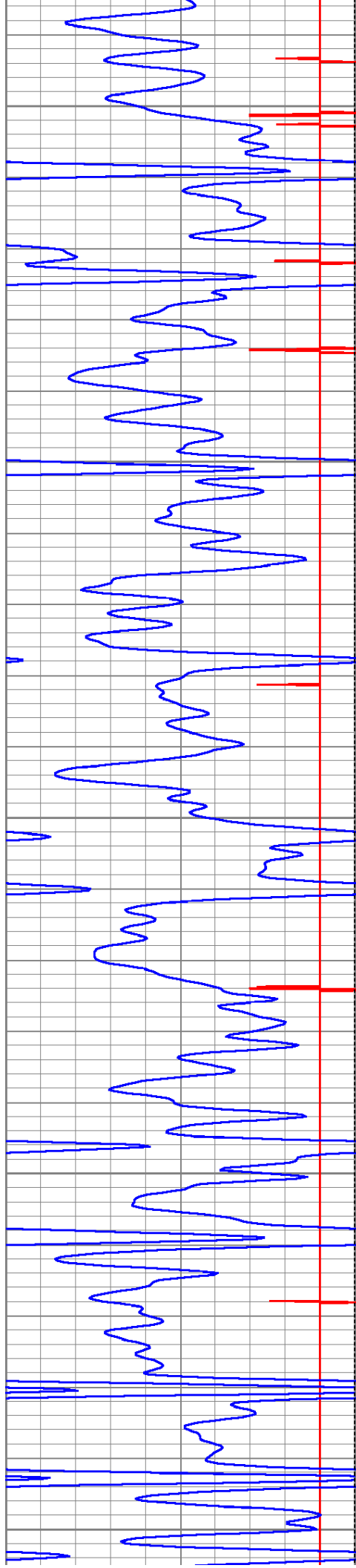
7150

7200

7250







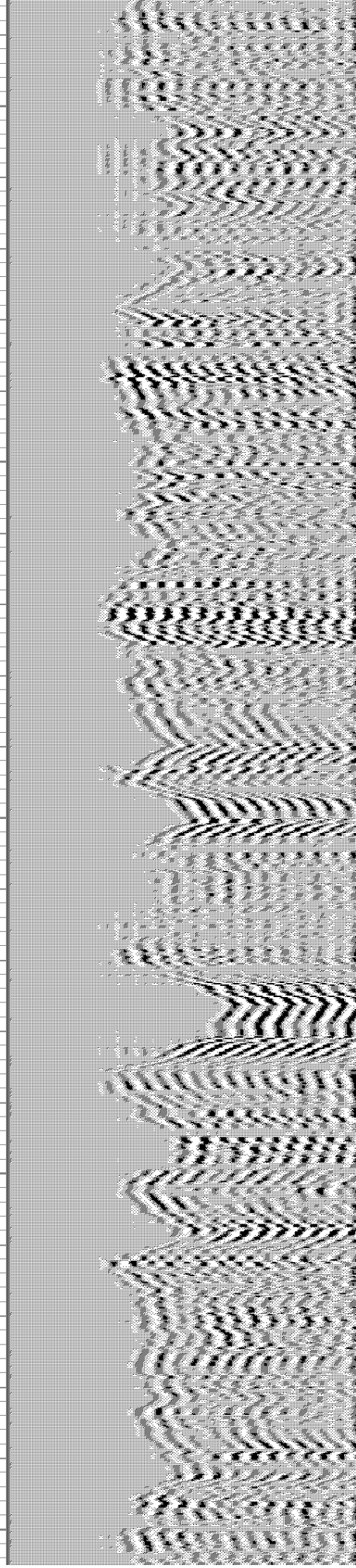
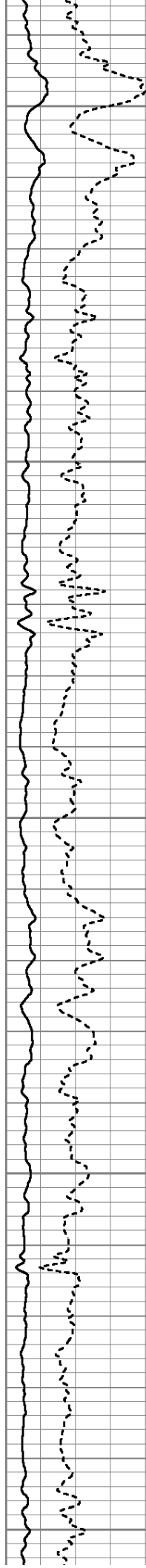
7300

7350

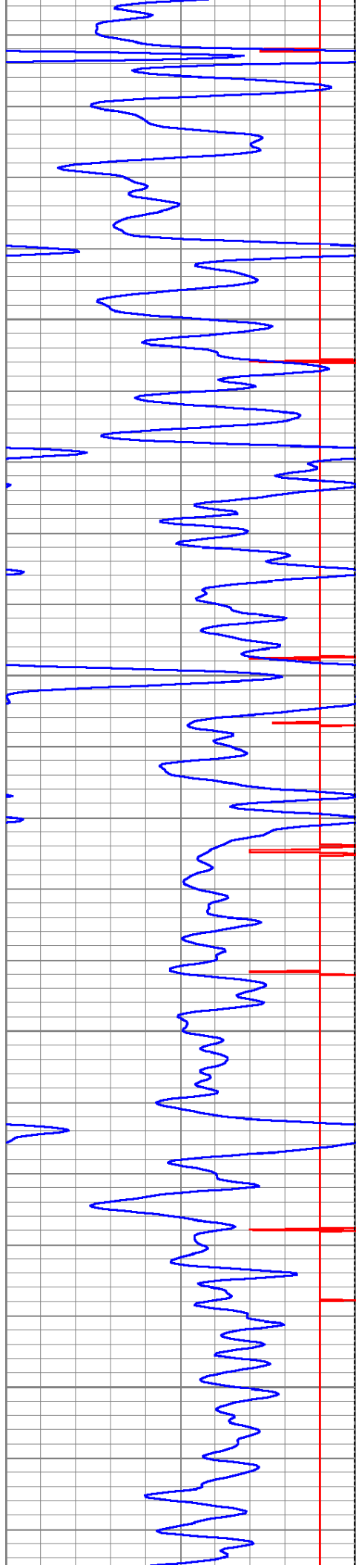
7400

7450

7500







7550

7600

7650

7700

