

HALLIBURTON

WPX ENERGY ROCKY MOUNTAIN LLC-EBUS

**RG 524-14-298
SULPHUR CREEK
Rio Blanco County , Colorado**

Cement Multiple Stages

18-May-2012

Post Job Report

The Road to Excellence Starts with Safety

Sold To #:	300721	Ship To #:	2926193	Quote #:		Sales Order #:	9506923	
Customer:	WPX ENERGY ROCKY MOUNTAIN LLC-EBUS			Customer Rep: Brunk, Andrew				
Well Name:	RG		Well #:	524-14-298		API/UWI #:		05-103-11904
Field:	SULPHUR CREEK	City (SAP):	MEEKER	County/Parish:	Rio Blanco		State:	Colorado
Lat:	N 39.87 deg. OR N 39 deg. 52 min. 13.31 secs.			Long:	W 108.363 deg. OR W -109 deg. 38 min. 12.649 secs.			
Contractor:	CYCLONE 29		Rig/Platform Name/Num: CYCLONE 29					
Job Purpose: Cement Multiple Stages								
Well Type:	Development Well			Job Type: Cement Multiple Stages				
Sales Person:	MAYO, MARK			Srv Supervisor:	SLAUGHTER, JESSE		MBU ID Emp #:	454315

Job Personnel

HES Emp Name	Exp Hrs	Emp #	HES Emp Name	Exp Hrs	Emp #	HES Emp Name	Exp Hrs	Emp #
GOWEN, WESLEY M	13.5	496205	HONE, AARON D	13.5	381285	KUKUS, CARLTON Dean	13.5	458577
ROMKEE, DALE Alan	2	488215	SALAZAR, PAUL Omar	2	445614	SILVERTHORN, AARON Jacob	13.5	491305
SLAUGHTER, JESSE Dean	13.5	454315						

Equipment

HES Unit #	Distance-1 way	HES Unit #	Distance-1 way	HES Unit #	Distance-1 way	HES Unit #	Distance-1 way
10722398	30 mile	10744549	30 mile	10938673	30 mile	10938678	30 mile
10988964	30 mile	10988978	30 mile	10995027	30 mile	11139330	30 mile
11259881	30 mile	11560046	30 mile	11583916	30 mile	11808833	30 mile
4902	30 mile	4905	30 mile				

Job Hours

Date	On Location Hours	Operating Hours	Date	On Location Hours	Operating Hours	Date	On Location Hours	Operating Hours
5-17-2012	5.5	3	5-18-2012	4.5				

TOTAL Total is the sum of each column separately

Job

Formation Name	Top	Bottom	Called Out	Date	Time	Time Zone
Formation Depth (MD)			On Location	17 - May - 2012	13:00	MST
Form Type	BHST		Job Started	17 - May - 2012	18:00	MST
Job depth MD	3363. ft	Job Depth TVD	Job Completed	17 - May - 2012	22:48	MST
Water Depth		Wk Ht Above Floor	Departed Loc	18 - May - 2012	05:54	MST
Perforation Depth (MD)	From	To		18 - May - 2012	08:00	MST

Well Data

Description	New / Used	Max pressure psig	Size in	ID in	Weight lbm/ft	Thread	Grade	Top MD ft	Bottom MD ft	Top TVD ft	Bottom TVD ft
-------------	------------	-------------------	---------	-------	---------------	--------	-------	-----------	--------------	------------	---------------

Sales/Rental/3rd Party (HES)

Description	Qty	Qty uom	Depth	Supplier
PLUG,CMTG,TOP,9 5/8,HWE,8.16 MIN/9.06 MA	1	EA		

Tools and Accessories

Type	Size	Qty	Make	Depth	Type	Size	Qty	Make	Depth	Type	Size	Qty	Make
Guide Shoe					Packer					Top Plug			
Float Shoe					Bridge Plug					Bottom Plug			
Float Collar					Retainer					SSR plug set	9.625	1	WF
Insert Float										Plug Container	9.625	1	HES
Stage Tool										Centralizers			

Miscellaneous Materials

Gelling Agt	Conc	Surfactant	Conc	Acid Type	Qty	Conc	%
Treatment Fld	Conc	Inhibitor	Conc	Sand Type	Size	Qty	

Fluid Data

Stage/Plug #: 1

Fluid #	Stage Type	Fluid Name	Qty	Qty uom	Mixing Density lbm/gal	Yield ft ³ /sk	Mix Fluid Gal/sk	Rate bbl/min	Total Mix Fluid Gal/sk
1	Fresh Water Spacer	FRESH WATER	20.00	bbl	8.33	.0	.0	4	
2	1st Stage Lead Cement	VERSACEM (TM) SYSTEM (452010)	500.0	sacks	12.8	1.77	9.34	8	9.34
		9.34 Gal							
3	1st Stage Tail Cement	VERSACEM (TM) SYSTEM (452010)	185.0	sacks	12.8	1.96	10.95	6	10.95
		10.95 Gal							
4	Displacement	FRESH WATER	258.3	bbl	8.33	.0	.0	8	
5	Fresh Water Spacer	FRESH WATER	20.00	bbl	8.33	.0	.0	4	
6	2nd Stage Cement	VERSACEM (TM) SYSTEM (452010)	780.0	sacks	12.8	1.96	10.95	8	10.95
		10.95 Gal							
7	Displacement	FRESH WATER	103.5	bbl	8.33	.0	.0	8	
Calculated Values		Pressures		Volumes					
Displacement	361.8	Shut In: Instant		Lost Returns	NO	Cement Slurry	494	Pad	
Top Of Cement	SURFACE	5 Min		Cement Returns	111	Actual Displacement		Treatment	
Frac Gradient		15 Min		Spacers	80	Load and Breakdown		Total Job	937
Rates									
Circulating		Mixing	8	Displacement	8	Avg. Job	8		
Cement Left In Pipe	Amount	0 ft	Reason	Shoe Joint					
Frac Ring # 1 @	ID	Frac ring # 2 @	ID	Frac Ring # 3 @	ID	Frac Ring # 4 @	ID		
The Information Stated Herein Is Correct				Customer Representative Signature					

The Road to Excellence Starts with Safety

Sold To #: 300721	Ship To #: 2926193	Quote #:	Sales Order #: 9506923
Customer: WPX ENERGY ROCKY MOUNTAIN LLC-EBUS	Customer Rep: Brunk, Andrew		
Well Name: RG	Well #: 524-14-298	API/UWI #: 05-103-11904	
Field: SULPHUR CREEK	City (SAP): MEEKER	County/Parish: Rio Blanco	State: Colorado
Legal Description:			
Lat: N 39.87 deg. OR N 39 deg. 52 min. 13.31 secs.		Long: W 108.363 deg. OR W -109 deg. 38 min. 12.649 secs.	
Contractor: CYCLONE 29	Rig/Platform Name/Num: CYCLONE 29		
Job Purpose: Cement Multiple Stages	Ticket Amount:		
Well Type: Development Well	Job Type: Cement Multiple Stages		
Sales Person: MAYO, MARK	Srvs Supervisor: SLAUGHTER, JESSE	MBU ID Emp #: 454315	

Activity Description	Date/Time	Cht #	Rate bbl/min	Volume bbl		Pressure psig		Comments
				Stage	Total	Tubing	Casing	
Call Out	05/17/2012 13:00							TD 3375 FT, TP 3363 FT, SHOE 21.59 FT, MULTI-STAGE TOOL 1339 FT, CSG 9 5/8 IN 36 LB/FT, HOLE 14 3/4 IN TO 1300 FT 13 1/2 FROM 1300 FT TO 3375 FT, MUD WT 8.6 PPG
Pre-Convoy Safety Meeting	05/17/2012 14:50							WITH ALL HES PERSONNEL
Crew Leave Yard	05/17/2012 15:00							
Arrive At Loc	05/17/2012 18:00							RIG WAS RUNNING CASING UPON HES ARRIVAL
Assessment Of Location Safety Meeting	05/17/2012 18:10							WITH ALL HES PERSONNEL
Other	05/17/2012 18:20							SPOT EQUIPMENT
Pre-Rig Up Safety Meeting	05/17/2012 18:30							WITH ALL HES PERSONNEL
Rig-Up Equipment	05/17/2012 18:40							MSC TOOL AND PLUG SET PROVIDED BY WEATHERFORD, WITH NO WEATHERFORD HAND ON SITE HES RAN PLUG SET
Pre-Job Safety Meeting	05/17/2012 22:30							WITH ALL PERSONNEL ON LOCATION
Start Job	05/17/2012 22:48							STAGE 1
Other	05/17/2012 22:49		2	2			27.0	FILL LINES WITH FRESH WATER

Cementing Job Log

Test Lines	05/17/2012 22:51							TESTED LINES TO 4497 PSI PRESSURE HOLDING
Pump Spacer 1	05/17/2012 22:56		4	40			124.0	FRESH WATER
Activity Description	Date/Time	Cht #	Rate bbl/ min	Volume bbl		Pressure psig		Comments
				Stage	Total	Tubing	Casing	
Pump Lead Cement	05/17/2012 23:09		6	157.6			275.0	500 SKS AT 12.8 PPG, 1.77 FT3/SK, 9.34 GAL/SK. WITH 7 BOXES OF TUFF FIBER IN FIRST 200 BBL
Pump Tail Cement	05/17/2012 23:35		6	64.6			209.0	185 SKS AT 12.8 PPG, 1.96 FT3 SK, 10.95
Shutdown	05/17/2012 23:49							WASH ON TOP OF PLUG PER CUSTOMER
Drop Top Plug	05/17/2012 23:53							DROP WIPER DART. PLUG LAUNCHED
Pump Displacement	05/17/2012 23:55		8	248.3			750.0	FRESH WATER. GOT RETURNS AT 38 AWAY.
Slow Rate	05/18/2012 00:14		4	93			280.0	SLOWED RATE AT 93 GONE FOR WIPER DART TO PASS THROUGH THE MSC TOOL
Resume	05/18/2012 00:14		8	113			70.0	RESUME RATE AT 113 AWAY ONCE ESTABLISHED PLUG WAS THROUGH
Slow Rate	05/18/2012 00:31		4	10			550.0	SLOW RATE 10 BBLs PRIOR TO CALCULATED DISPLACEMENT
Bump Plug	05/18/2012 00:34		4		258.3		1100. 0	PLUG BUMPED
Check Floats	05/18/2012 00:35							FLOATS HOLDING. HES RETURNED 1.25 BBL H2O TO PUMP
Drop Opening Device For Multiple Stage Cementer	05/18/2012 00:38							DROP BOMB WAIT 10 MINUTES
Open Multiple Stage Cementer	05/18/2012 00:48						700.0	MSC TOOL PRESSURED UP TO 700 PSI
Circulate Well	05/18/2012 00:48		4	10			70.0	FRESH WATER. GOOD RETURNS

Cementing Job Log

End Job	05/18/2012 00:52							TURNED WELL OVER TO RIG TO CIRCULATE. WAIT 4 HOURS FOR NEXT STAGE. PIPE WAS STATIC DURING JOB, MODERATE CIRCULATION THROUGHOUT JOB
Activity Description	Date/Time	Cht #	Rate bbl/min	Volume bbl		Pressure psig		Comments
				Stage	Total	Tubing	Casing	
Start Job	05/18/2012 04:26							STAGE 2
Pump Spacer	05/18/2012 04:27		4	40			120.0	FRESH WATER
Pump Cement	05/18/2012 04:40		8	272.3			450.0	780 SKS AT 12.8 PPG, 1.96 FT3/SK, 10.95 GAL/SK. WITH 3 BOXES OF TUFF FIBER IN BEGINNING OF SLURRY
Shutdown	05/18/2012 05:26							STARTED SEEING CEMENT RETURNS
Drop Plug	05/18/2012 05:29							MSC CLOSING DEVICE. PLUG LAUNCHED
Pump Displacement	05/18/2012 05:32		8	93.5			580.0	FRESH WATER
Slow Rate	05/18/2012 05:50		4	10			400.0	SLOW RATE 10 BBLS PRIOR TO CALCULATED DISPLACEMENT
Bump Plug	05/18/2012 05:52		4		103.5		1600.0	PLUG BUMPED
Close Multiple Stage Cementer	05/18/2012 05:52						1200.0	MSC TOOL CLOSED AT 1200 PSI
Release Casing Pressure	05/18/2012 05:53							HES RETURNED 1 BBL H2O TO PUMP
End Job	05/18/2012 05:54							PIPE WAS STATIC DURING JOB, GOOD CIRCULATION THROUGHOUT JOB. HES RETURNED 111 BBL CEMENT TO SURFACE
Pre-Rig Down Safety Meeting	05/18/2012 06:00							WITH ALL HES PERSONNEL
Rig-Down Equipment	05/18/2012 06:10							
Pre-Convoy Safety Meeting	05/18/2012 07:50							WITH ALL HES PERSONNEL

Sold To # : 300721

Ship To # :2926193

Quote # :

Sales Order # :

9506923

SUMMIT Version: 7.3.0021

Monday, May 28, 2012 01:27:00

HALLIBURTON

Cementing Job Log

Crew Leave Location	05/18/2012 08:00							
Comment	05/18/2012 08:01							THANK YOU FOR USING HALLIBURTON CEMENT DEPARTMENT JESSE SLAUGHTER AND CREW

Sold To # : 300721

Ship To # :2926193

Quote # :

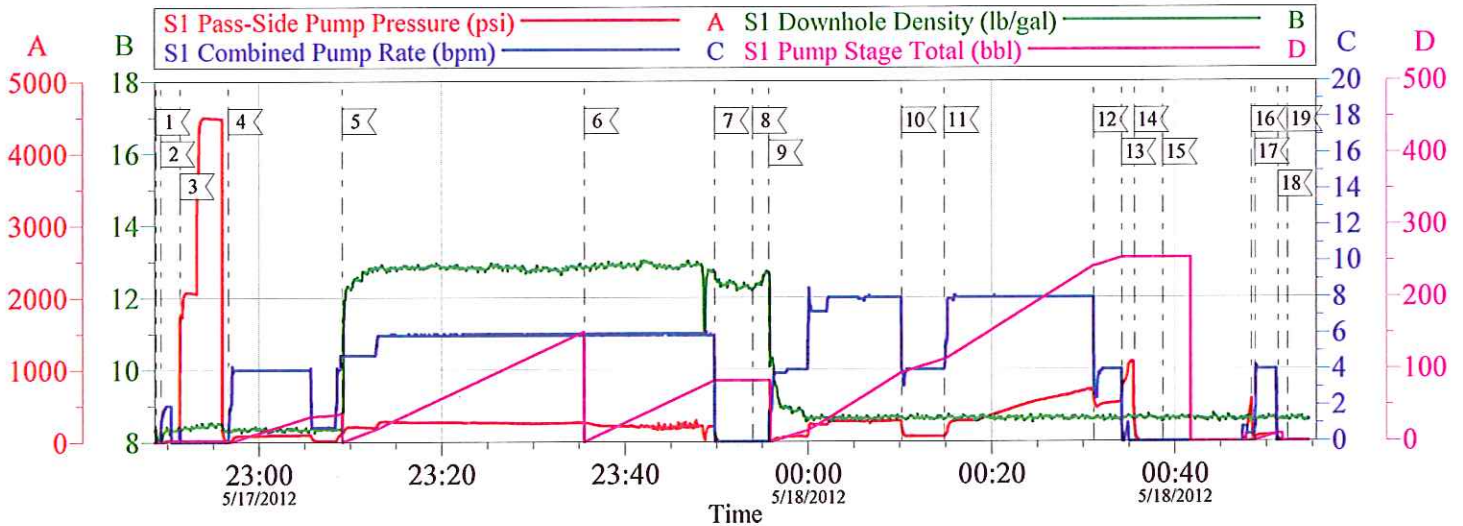
Sales Order # : 9506923

SUMMIT Version: 7.3.0021

Monday, May 28, 2012 01:27:00

WILLIAMS RG 524-14-298

9 5/8 SURFACE STAGE 1



Local Event Log

1	START JOB	5/17/2012 22:48:44	2	FILL LINES	5/17/2012 22:49:15
3	TEST LINES	5/17/2012 22:51:21	4	PUMP WATER SPACER	5/17/2012 22:56:39
5	PUMP LEAD CEMENT	5/17/2012 23:09:09	6	PUMP TAIL CEMENT	5/17/2012 23:35:34
7	SHUT DOWN	5/17/2012 23:49:48	8	DROP DART	5/17/2012 23:53:58
9	PUMP DISPLACEMENT	5/17/2012 23:55:44	10	SLOW RATE	5/18/2012 00:10:14
11	RESUME RATE	5/18/2012 00:14:53	12	SLOW RATE	5/18/2012 00:31:10
13	BUMP PLUG	5/18/2012 00:34:13	14	CHECK FLOATS	5/18/2012 00:35:37
15	DROP OPENING TOOL	5/18/2012 00:38:43	16	OPEN TOOL	5/18/2012 00:48:26
17	CIRCULATE WELL	5/18/2012 00:48:47	18	SHUTDOWN	5/18/2012 00:51:19
19	END JOB	5/18/2012 00:52:21			

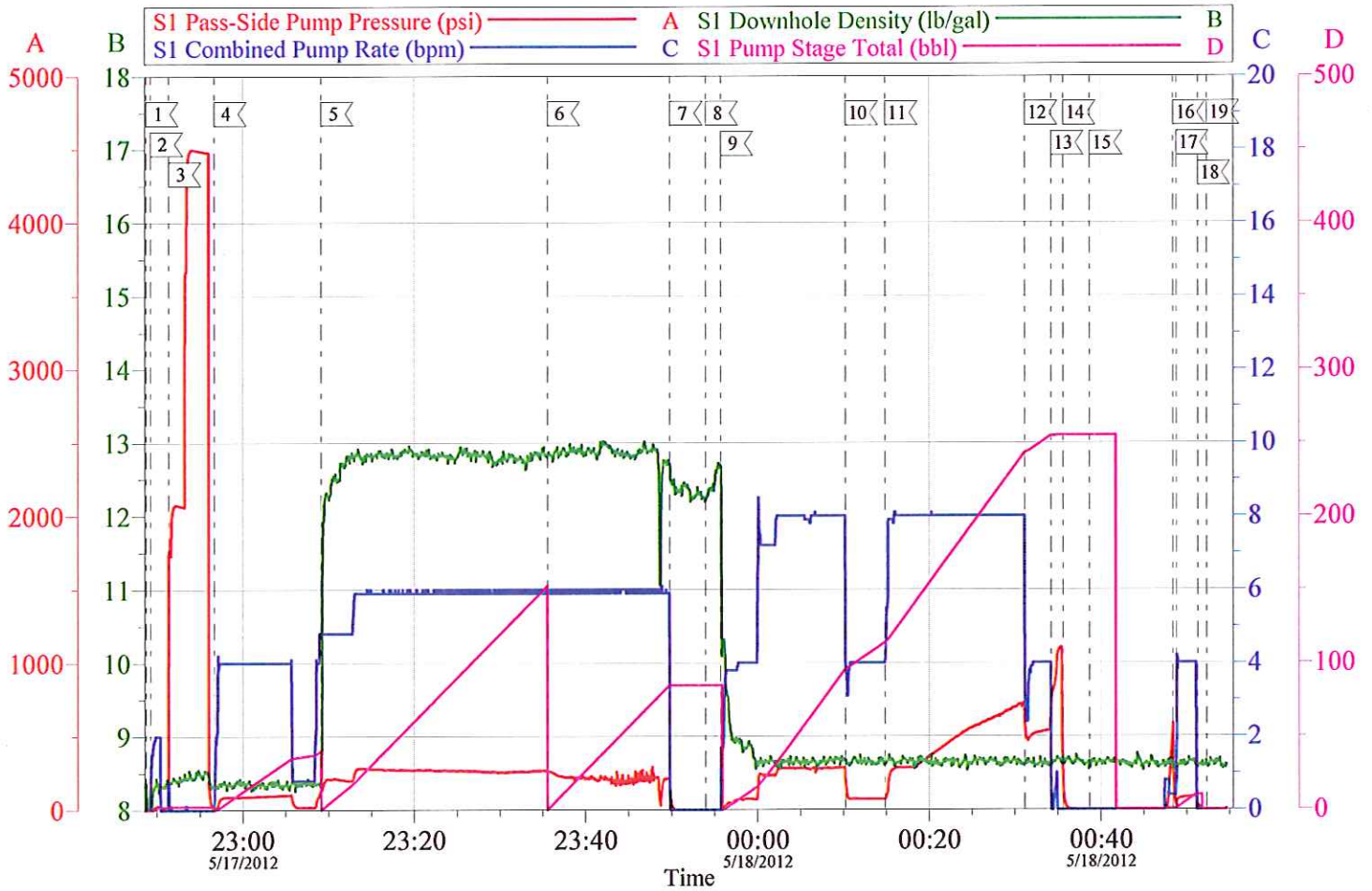
Customer: WILLIAMS
Well Description: RG 524-14-298
Customer Rep: ANDREW BRUNK

Job Date: 17-May-2012
Job Type: STAGE 1
Cement Supervisor: JESSE SLAUGHTER

Sales Order #: 9506923
ADC Used: YES
Elite #: WESLEY GOWEN

OptiCem v6.4.10
18-May-12 01:05

WILLIAMS RG 524-14-298 9 5/8 SURFACE STAGE 1

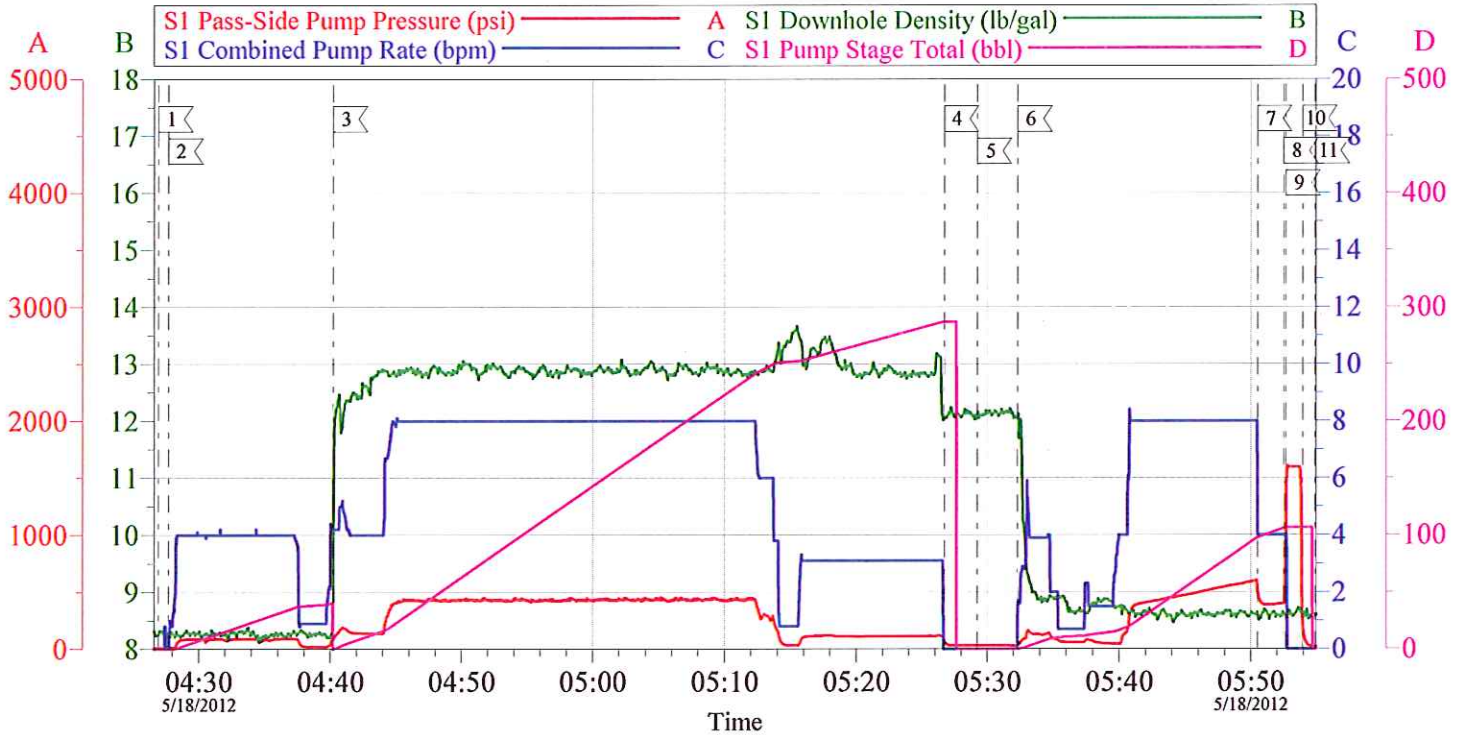


Customer: WILLIAMS	Job Date: 17-May-2012	Sales Order #: 9506923
Well Description: RG 524-14-298	Job Type: STAGE 1	ADC Used: YES
Customer Rep: ANDREW BRUNK	Cement Supervisor: JESSE SLAUGHTER	Elite #5: WESLEY GOWEN

OptiCem v6.4.10
18-May-12 01:06

WILLIAMS RG 524-14-298

9 5/8 SURFACE STAGE 2



Local Event Log

1 START JOB	04:26:56	2 PUMP H2O SPACER	04:27:41	3 PUMP CEMENT	04:40:12
4 SHUTDOWN	05:26:42	5 DROP CLOSING TOOL	05:29:15	6 PUMP DISPLACEMENT	05:32:19
7 SLOW RATE	05:50:30	8 BUMP PLUG	05:52:31	9 CLOSE TOOL	05:52:41
10 RELEASE CASING PRESSURE	05:53:58	11 END JOB	05:54:56		

Customer: WILLIAMS
Well Description: RG 524-14-298
Customer Rep: ANDREW BRUNK

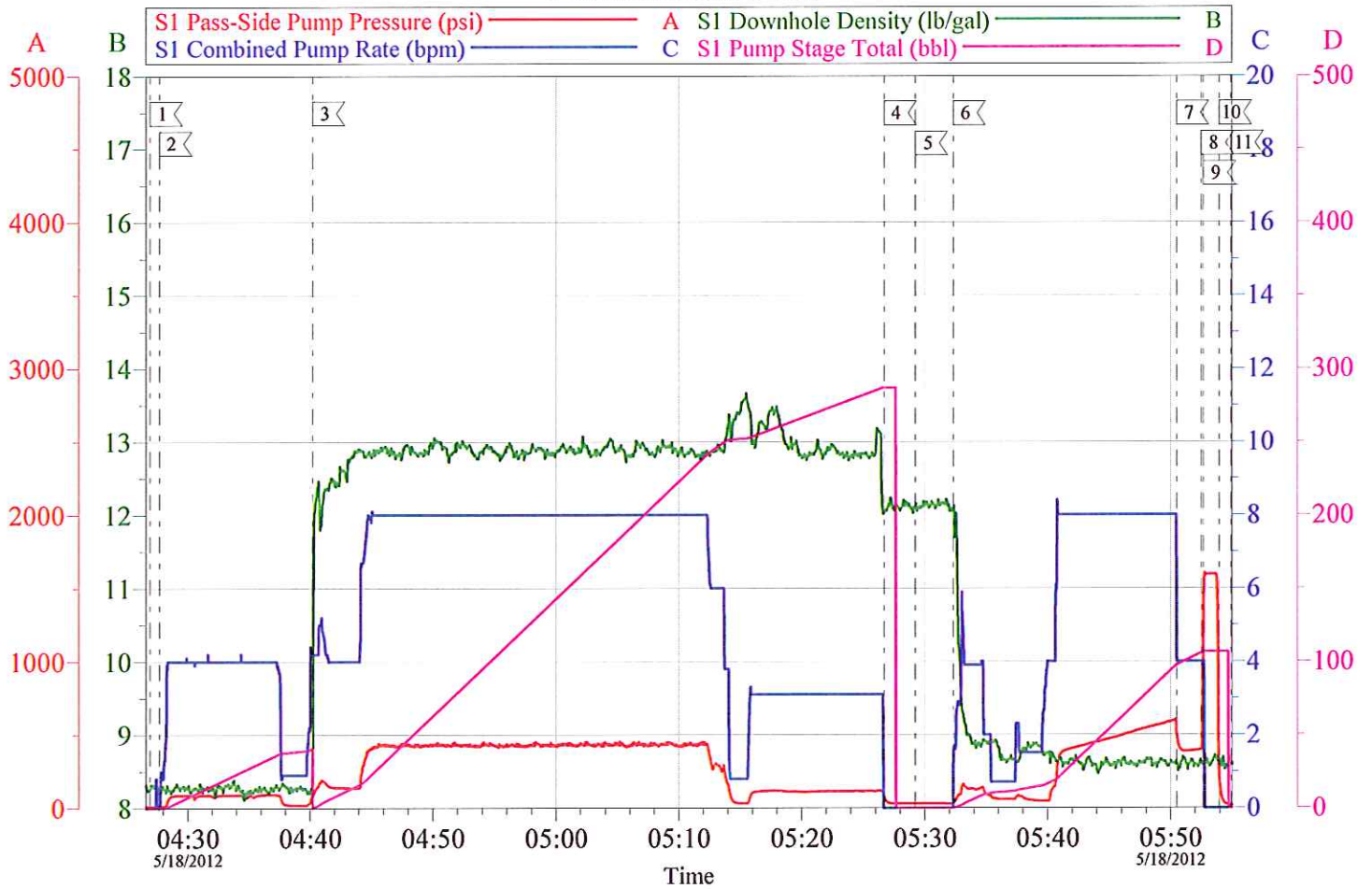
Job Date: 18-May-2012
Job Type: STAGE 2
Cement Supervisor: JESSE SLAUGHTER

Sales Order #: 9506923
ADC Used: YES
Elite #5 WESLEY GOWEN:

OptiCem v6.4.10
18-May-12 06:07

WILLIAMS RG 524-14-298

9 5/8 SURFACE STAGE 2



Customer: WILLIAMS	Job Date: 18-May-2012	Sales Order #: 9506923
Well Description: RG 524-14-298	Job Type: STAGE 2	ADC Used: YES
Customer Rep: ANDREW BRUNK	Cement Supervisor: JESSE SLAUGHTER	Elite #5 WESLEY GOWEN:

OptiCem v6.4.10
18-May-12 06:06