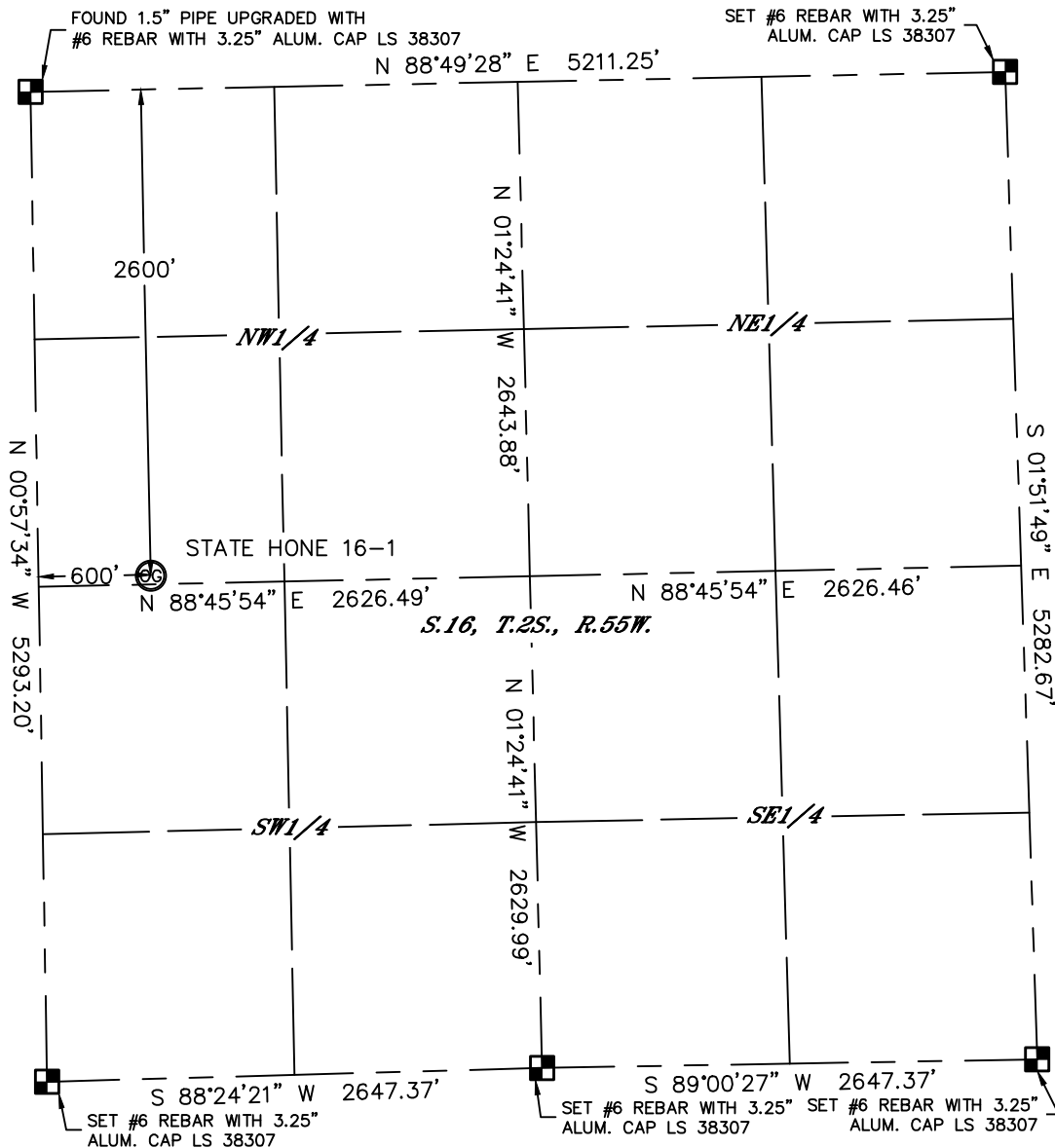


WELL LOCATION CERTIFICATE

THIS MAP DOES NOT REPRESENT A BOUNDARY SURVEY

SECTION: 16
TOWNSHIP: 2S
RANGE: 55W



In accordance with a request from Robert Anderson with Overland Resources, LLC, Lat40th, Inc. has determined the surface location of the STATE HONE 16-1 to be 2600' from the NORTH line and 600' from the WEST line as measured at right angles from the section lines of Section 16, Township 2 South, Range 55 West of the Sixth Principal Meridian, County of Washington, State of Colorado.

I hereby state that this Well Location Certificate was prepared by me, or under my direct supervision, that the fieldwork was completed on 11/8/12, for and on behalf of Overland Resources, LLC. That this is not a Land Survey Plat or an Improvement Survey Plat, and that it is not to be relied upon for establishment of fence, building, or other future improvement lines.

NOTE:

- 1) Bearings shown are Grid Bearings of the Colorado State Plane Coordinate System, North Zone, North American Datum 1983/2007. The lineal dimensions as contained herein are based upon the "U.S. Survey Foot."
- 2) Ground elevations are based on an observed GPS elevation (NAVD 1988 DATUM).
- 3) IMPROVEMENTS: See LOCATION DRAWING for all visible improvements within 400' of disturbed area.
- 4) SURFACE USE: CROP LAND
- 5) INSTRUMENT OPERATOR: WYATT HALL



SURFACE LOCATION

LAT: 39.87881N
LONG: 103.55275W
PDOP: 1.2
ELEV: 4679'
1/4,1/4: SW1/4NW1/4
NEAREST PROPERTY LINE: 600' W

NOTE

NOTE According to Colorado law, you must commence any legal action based upon any defect in this W.L.C. within three years after you discover such defect. In no event, may any action based upon any defect in this survey be commenced more than ten years after the date of the certificate shown hereon. (13-80-105 C.R.S.)

LEGEND

-  = ALIQUOT MONUMENT AS DESCRIBED
 = CALCULATED POSITION

Kyle E. Rutz—On behalf of L&L, Inc.
Colorado Licensed Professional
Land Surveyor No. 38307

DATE: 11-9-12
PROJECT#: 2012153

