

WHITING OIL & GAS CORP.

ADDENDUM TO LEGAL PLAT FOR

RAZOR #23-2612H

SECTION 23, T10N, R58W, 6th P.M.

327' FNL 660' FWL

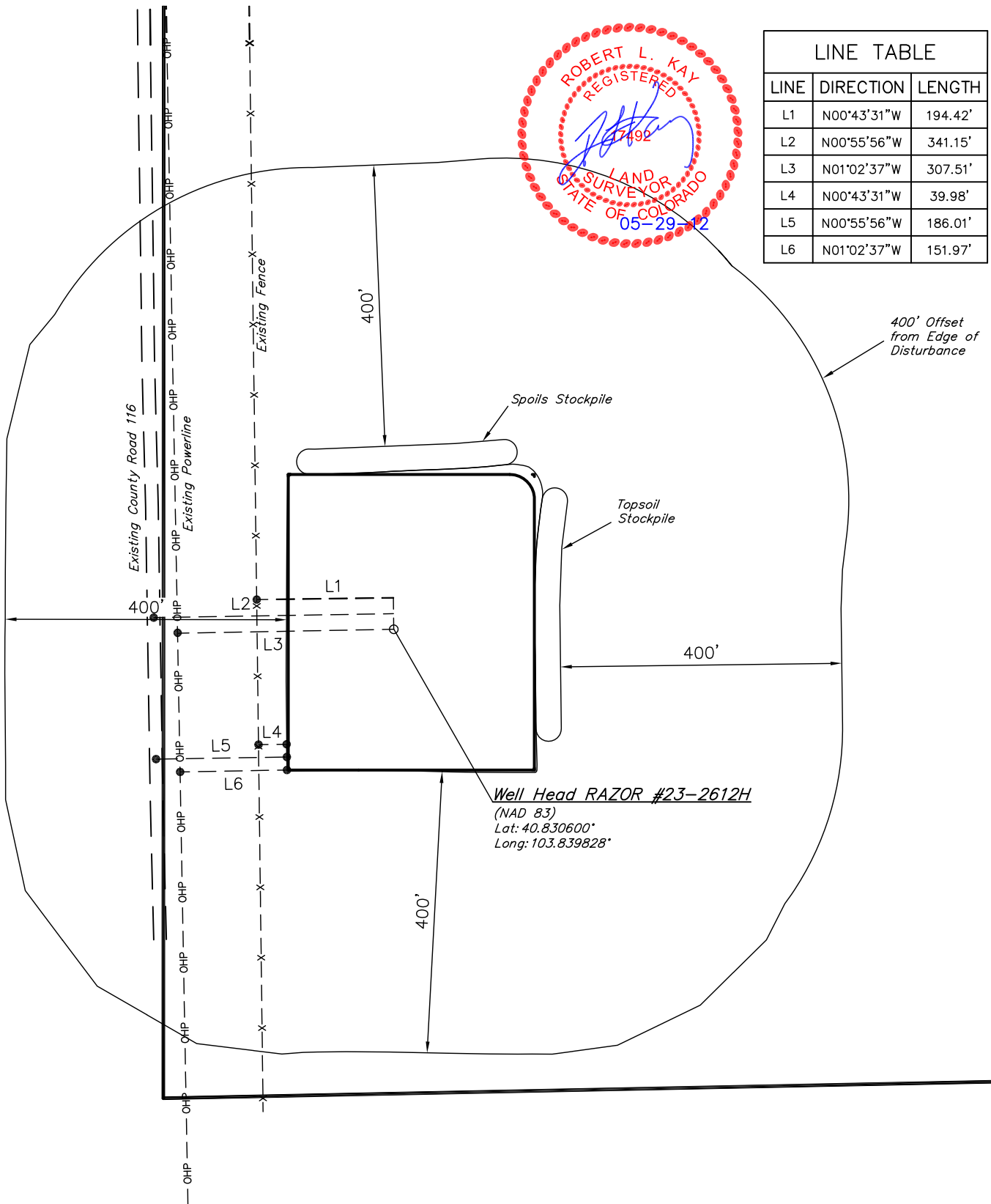
SCALE: 1" = 200'

DATE: 05-24-12

DRAWN BY: J.W.



LINE TABLE		
LINE	DIRECTION	LENGTH
L1	N00°43'31"W	194.42'
L2	N00°55'56"W	341.15'
L3	N01°02'37"W	307.51'
L4	N00°43'31"W	39.98'
L5	N00°55'56"W	186.01'
L6	N01°02'37"W	151.97'



UINTAH ENGINEERING & LAND SURVEYING

85 So. 200 East * Vernal, Utah 84078 * (435) 789-1017