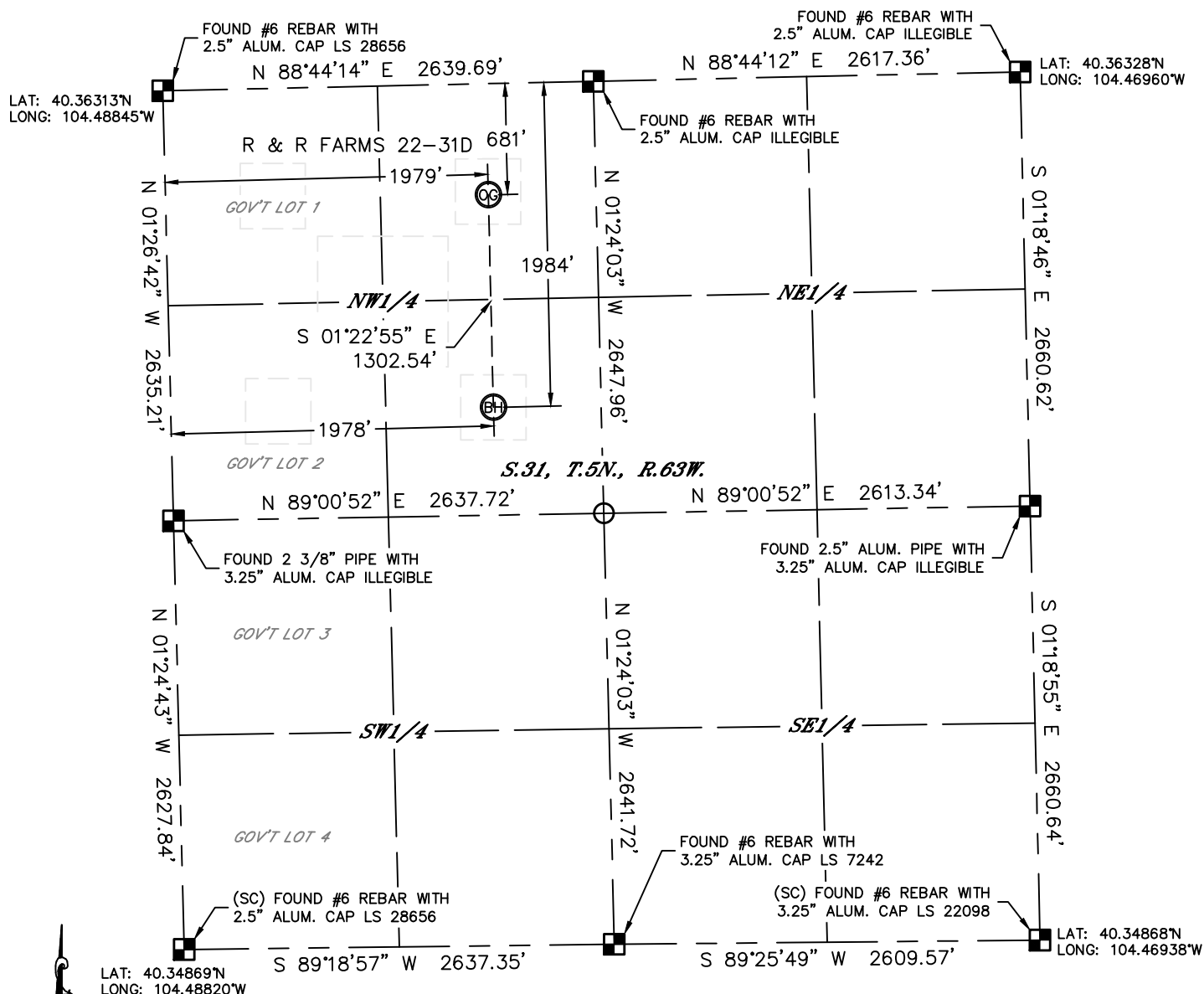


WELL LOCATION CERTIFICATE

THIS MAP DOES NOT REPRESENT A BOUNDARY SURVEY

SECTION: 31
TOWNSHIP: 5N
RANGE: 63W



In accordance with a request from Jesse White with APOLLO OPERATING, LLC, Lat40', Inc. has determined the surface location of the R & R FARMS 22-31D to be 681' from the NORTH line and 1979' from the WEST line and the bottom hole to be 1984' from the NORTH line and 1978' from the WEST line as measured at right angles from the section lines of Section 31, Township 5 North, Range 63 West of the Sixth Principal Meridian, County of Weld, State of Colorado.

I hereby state that this Well Location Certificate was prepared by me, or under my direct supervision, that the fieldwork was completed on 10/15/2012, for and on behalf of APOLLO OPERATING, LLC. That this is not a Land Survey Plat or an Improvement Survey Plat, and that it is not to be relied upon for establishment of fence, building, or other future improvement lines.

NOTE:

- 1) Bearings shown are Grid Bearings of the Colorado State Plane Coordinate System, North Zone, North American Datum 1983/2007. The lineal dimensions as contained herein are based upon the "U.S. Survey Foot."
- 2) Ground elevations are based on an observed GPS elevation (NAVD 1988 DATUM).
- 3) IMPROVEMENTS: See LOCATION DRAWING for all visible improvements within 400' of disturbed area.
- 4) SURFACE USE: CROP LAND
- 5) INSTRUMENT OPERATOR: BRIAN ROTTINGHAUS

SURFACE LOCATION

LAT: 40.36132N
LONG: 104.48132W
PDOP: 1.5
ELEV: 4582'
1/4,1/4: NE1/4NW1/4
NEAREST PROPERTY LINE: ±440' NW



BOTTOM HOLE

LAT: 40.35774°N
LONG: 104.48126°W

NOTE

NOTE According to Colorado law, you must commence any legal action based upon any defect in this W.L.C. within three years after you discover such defect. In no event, may any action based upon any defect in this survey be commenced more than ten years after the date of the certificate shown hereon. (13-80-105 C.R.S.)

LEGEND

-  = ALIQUOT MONUMENT AS DESCRIBED
 = CALCULATED POSITION

Brian T. Brinkman—On behalf of L&L 40th Inc.
Colorado Licensed Professional Land Surveyor No. 38175
DATE: rev11/07/2012
PROJECT#: 2012147

