



Project: RIO BLANCO COUNTY, CO
 Site: SHERIDAN 11-2
 Well: SHERIDAN 11-2
 Wellbore: SHERIDAN 11-2
 Design: SHERIDAN 11-2
 Latitude: 40° 3' 57.629 N
 Longitude: 107° 54' 28.830 W
 GL: 6383.80
 KB: WELL @ 6403.80ft (Original Well Elev)



SECTION DETAILS

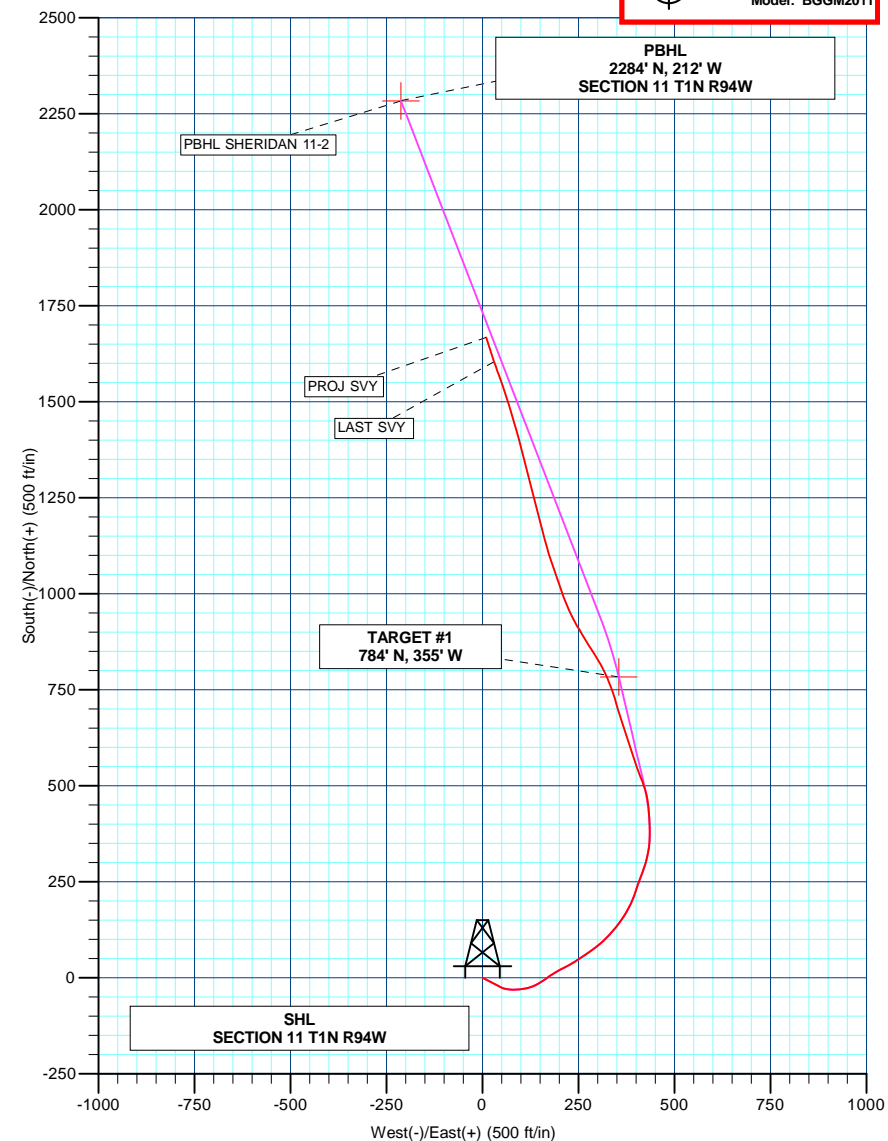
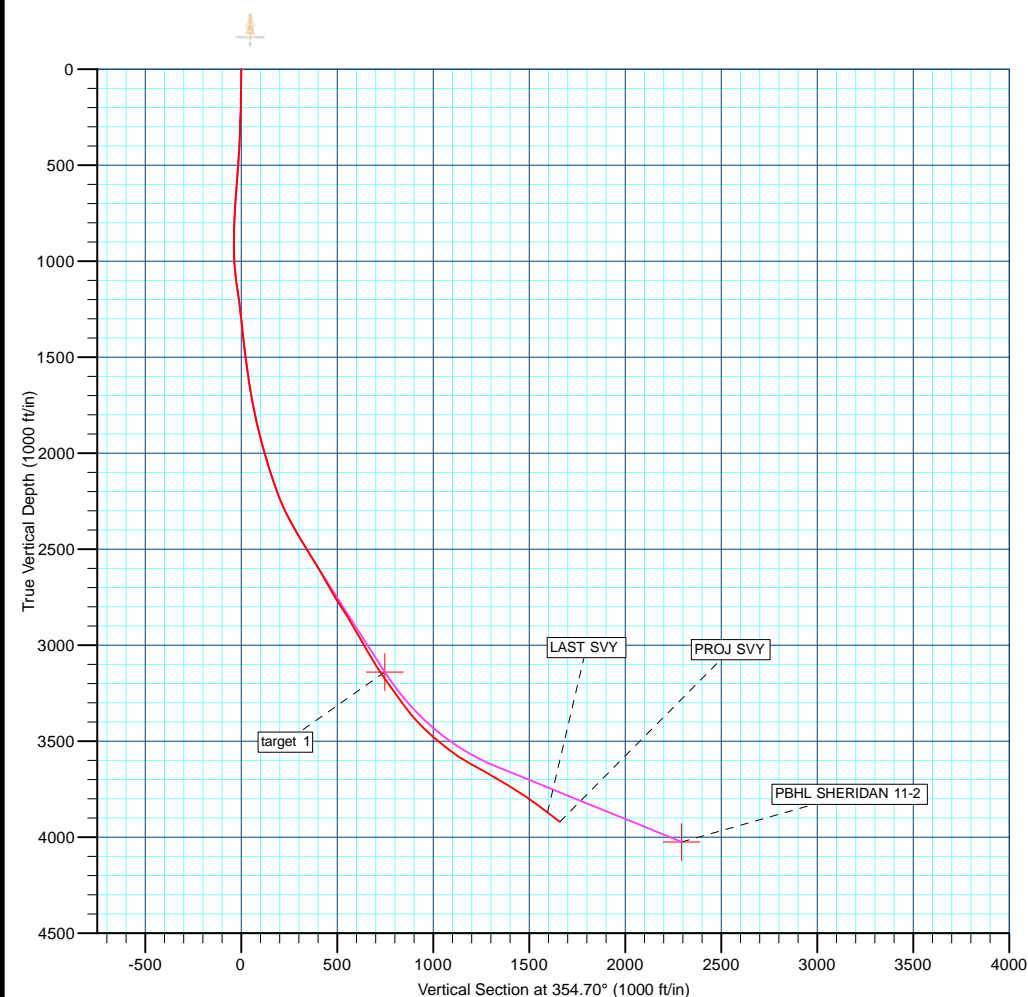
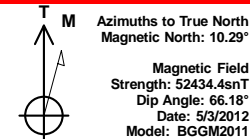
MD	Inc	Azi	TVD	+N/-S	+E/-W	DLeg	TFace	VSec	Annotation
2660.00	31.64	356.89	2538.59	406.58	435.01	0.00	0.00	364.63	Start DLS 3.04 TFO -79.59
2841.53	32.64	346.77	2692.29	502.03	421.27	3.01	-79.48	460.95	
2891.62	32.91	346.77	2734.42	528.44	415.06	0.55	0.00	487.81	
3374.76	32.91	346.77	3140.00	784.00	355.00	0.00	0.00	747.83	Start DLS 4.88 TFO -22.87
3637.08	44.72	338.91	3344.03	940.56	306.15	4.88	-22.68	908.24	
4168.21	68.62	338.91	3633.76	1351.60	147.59	4.50	0.00	1332.18	
5241.40	68.62	338.91	4025.00	2284.00	-212.00	0.00	0.00	2293.82	TD at 5242.35

WELLBORE TARGET DETAILS (LAT/LONG)

Name	TVD	+N/-S	+E/-W	Latitude	Longitude	Shape
target 1	3140.00	784.00	355.00	40° 4' 5.377 N	107° 54' 24.264 W	Point
PBHL SHERIDAN 11-2	4025.00	2284.00	-212.00	40° 4' 20.201 N	107° 54' 31.557 W	Point

FORMATION TOP DETAILS

TVDPth	MDPath	Formation
1831.00	1878.70	Sulfur Creek Fault
2143.00	2210.94	T/Buck Peak
2438.00	2541.91	T/Niobrara (Tow Creek Bench)
3329.00	3616.10	B/Middle Bench (Niobrara)



Survey: Survey #1 (SHERIDAN 11-2/SHERIDAN 11-2)

Created By: TRACY WILLIAMS Date: 9:39, June 07 2012