

**MATRIX OIL CORPORATION
104 W ANAPAMU ST STE C
SANTA BARBARA, California**

Sheridan 11-2

CAPSTAR 312

Post Job Summary **Cement Intermediate Casing**

Date Prepared: June 5, 2012
Version: 1

Service Supervisor: FUCHS, BENJAMIN

Submitted by: Charli A Brown

HALLIBURTON

HALLIBURTON

Wellbore Geometry

Job Tubulars					MD		Excess %	Shoe Joint Length ft
Type	Description	Size in	ID in	Wt lbm/ft	Top ft	Bottom ft		
Casing	Surface Casing	9.63	8.921	36.00	0.00	600.00		40.00
Open Hole Section	Intermediate Open Hole		8.750		600.00	2,600.00	35.00	0.00
Casing	Intermediate Casing	7.00	6.366	23.00	0.00	2,600.00		40.00

Pumping Schedule

Fluid #	Fluid Type	Fluid Name	Density lbm/gal	Avg Rate bbl/min	Volume
1	Spacer	Fresh Water	8.33	2.00	10.0 bbl
2	Spacer	SUPER FLUSH 101	10.00	3.00	20.0 bbl
3	Spacer	Fresh Water	8.33	3.00	10.0 bbl
4	Cement Slurry	EconoCem	12.20	4.00	135.0 sacks
5	Cement Slurry	ExtendaCem	14.20	4.00	165.0 sacks
6	Mud	Displacement	9.00	6.00	103.0 bbl

Fluids Pumped

Stage/Plug # 1 **Fluid 1:** Fresh Water
FRESH WATER

Fluid Density: 8.33 lbm/gal
Fluid Volume: 10.00 bbl
Pump Rate: 2.00 bbl/min

Stage/Plug # 1 **Fluid 2:** SUPER FLUSH 101
SUPER FLUSH 101 - SBM (12199)

Fluid Density: 10.00 lbm/gal
Fluid Volume: 20.00 bbl
Pump Rate: 3.00 bbl/min

Stage/Plug # 1 **Fluid 3:** Fresh Water
FRESH WATER

Fluid Density: 8.33 lbm/gal
Fluid Volume: 10.00 bbl
Pump Rate: 3.00 bbl/min

Stage/Plug # 1 **Fluid 4:** EconoCem
ECONOCEM (TM) SYSTEM
0.4 % Halad(R)-344
0.125 lbm Poly-E-Flake
0.6 % HR-5
3 lbm Kol-Seal

Fluid Weight: 12.20 lbm/gal
Slurry Yield: 2.25 ft³/sack
Total Mixing Fluid: 12.13 Gal
Volume: 135.0 sacks
Calculated Fill: 1,600.00 ft
Pump Rate: 4.00bbl/min

HALLIBURTON

Stage/Plug # 1 Fluid 5: ExtendaCem
EXTENDACEM (TM) SYSTEM
0.2 % Halad(R)-344
0.4 % HR-5
0.125 lbm Poly-E-Flake
3 lbm Kol-Seal

Fluid Weight: 14.20 lbm/gal
Slurry Yield: 1.30 ft³/sack
Total Mixing Fluid: 5.49 Gal
Surface Volume: 165.0 sacks
Sacks: 165.0 sacks
Calculated Fill: 1,000.00 ft
Calculated Top of Fluid: 1,600.00 ft
Pump Rate: 4.00bbl/min

Stage/Plug # 1 Fluid 6: Displacement

Fluid Density: 9.00 lbm/gal
Fluid Volume: 103.00 bbl
Pump Rate: 6.00 bbl/min

Job Summary

Job Information

Job Start Date	6/2/2012 9:21:00 AM
Job MD	2,655.0 ft
Job TVD	2,657.0 ft
Height of Plug Container/Swage Above Rig Floor	2.0 ft
Surface Temperature at Time of Job	62 degF
Mud Type	Water Based Mud
Actual Mud Density	9 lbm/gal
Time Circulated before job	2.00 hour(s)
Mud Volume Circulated	600.00 bbl
Rate at Which Well was Circulated	5.000 bbl/min
Pipe Movement During Hole Circulation	None
Time From End Mud Circ. to Job Start	20.00 minute
Pipe Movement During Cementing	None
Calculated Displacement	103.00 bbl
Amount of Cement Returns	8.00 bbl
Job Displaced by (rig/halco)	Cement Unit HP Pumps
Annular flow Before Job? (Water/Gas)	No
Annular flow After Job? (Water/Gas)	No
Length of Rat Hole	2.00 ft

Cementing Equipment

Number of Centralizers Used	25
Pipe Centralization	Through Entire Cement Column
Brand of Float Equipment Used	HES
Did Float Equipment Hold?	Yes
Plug set used?	Yes
Brand of Plug set used?	HES
Did Plugs Bump?	Yes
Calculated Pressure to Bump Plugs	611.0 psig

HALLIBURTON

Service Supervisor Reports

Job Log

Date/Time	Chart #	Activity Code	Pump Rate	Volume	Pressure (psig)	Comments
06/01/2012 18:30		Call Out				
06/01/2012 20:15		Safety Meeting - Departing Location				Discuss all travel related safety issues
06/01/2012 20:30		Crew Leave Yard				
06/01/2012 23:30		Arrive at Location from Service Center				
06/01/2012 23:30		Waiting - Arrived Early to Location - Start Time				Customer pulling drill pipe upon arrival to location (waiting off location)
06/02/2012 07:00		Safety Meeting - Assessment of Location				Identify and discuss all jobsite related safety issues and rig up layout with crew
06/02/2012 07:15		Other				Spot equipment using spotter(s)
06/02/2012 07:30		Safety Meeting - Pre Rig-Up				Discuss all rig up related safety issues with crew
06/02/2012 07:45		Rig-Up Equipment				
06/02/2012 08:45		Safety Meeting - Pre Job				Discuss job related safety issues and pump schedule with crew and rig crew
06/02/2012 09:21	2	Start Job				Loaded a bottom plug and then stabbed the plug container over it
06/02/2012 09:21	3	Pump Water	2	3	.0	
06/02/2012 09:26	4	Pressure Test			2958.0	
06/02/2012 09:31	5	Pump Water	2	10	.0	
06/02/2012 09:36	6	Pump Spacer	3	20	116.0	Superflush pre mixed @ 10.0 ppg
06/02/2012 09:45	7	Pump Water	3	10	132.0	
06/02/2012 09:49	8	Pump Lead Cement	4	54	193.0	Mixed @ 12.2 ppg 2.25 yield 12.13 gal/sk (135 sks)
06/02/2012 10:03	9	Pump Tail Cement	4	38	98.0	Mixed @ 14.2 ppg 1.3 yield 5.49 gal/sk (165 sks) landed bottom plug @ 10:06:00 disc ruptured with 102 psi
06/02/2012 10:13	10	Shutdown				
06/02/2012 10:14	11	Clean Lines				
06/02/2012 10:19	12	Drop Plug				

HALLIBURTON

Date/Time	Chart #	Activity Code	Pump Rate	Volume	Pressure (psig)	Comments
06/02/2012 10:19	13	Pump Displacement	6	103	33.0	
06/02/2012 10:29	14	Spacer Returns to Surface	6		208.0	Water to surface with 55 bbls displacement away
06/02/2012 10:35	15	Slow Rate	3		609.0	
06/02/2012 10:37	16	Cement Returns to Surface	2		642.0	Cement to surface with 95 bbls displacement away 8 bbls to surface
06/02/2012 10:40	17	Bump Plug	2		714.0	
06/02/2012 10:43	18	Check Floats			1345.0	1.5 bbls back to truck when checked
06/02/2012 10:45	19	End Job				
06/02/2012 10:45		Safety Meeting - Pre Rig-Down				Discuss all rig down related safety issues with crew
06/02/2012 11:00		Rig-Down Equipment				
06/02/2012 12:45		Safety Meeting - Departing Location				Discuss all travel related safety issues with crew
06/02/2012 13:00		Crew Leave Location				Thank you for your business!

The Road to Excellence Starts with Safety

Sold To #: 350361	Ship To #: 2930176	Quote #:	Sales Order #: 9556142
Customer: MATRIX OIL CORPORATION	Customer Rep:		
Well Name: Sheridan	Well #: 11-2	API/UWI #:	
Field:	City (SAP): RANGELY	County/Parish:	State: California
Legal Description: Section 11 Township 1N Range 94W			
Contractor: CAPSTAR	Rig/Platform Name/Num: 312		
Job Purpose: Cement Intermediate Casing			
Well Type: Exploratory / Wildcat	Job Type: Cement Intermediate Casing		
Sales Person: SCOTT, KYLE	Srvs Supervisor: FUCHS, BENJAMIN	MBU ID Emp #: 470584	

Job Personnel

HES Emp Name	Exp Hrs	Emp #	HES Emp Name	Exp Hrs	Emp #	HES Emp Name	Exp Hrs	Emp #
FUCHS, BENJAMIN Reinhard	13.5	470584	HARVEY, CORY Lee	13.5	508253	VOORHIS, WALTER T	13.5	472268
WILSON, JOSEPH Corbett	13.5	515693						

Equipment

HES Unit #	Distance-1 way	HES Unit #	Distance-1 way	HES Unit #	Distance-1 way	HES Unit #	Distance-1 way
10572545	110 mile	10948687	110 mile	10994447	110 mile	11360879	110 mile
11410662	110 mile	11512092	110 mile	HBL-2000-2	110 mile		

Job Hours

Date	On Location Hours	Operating Hours	Date	On Location Hours	Operating Hours	Date	On Location Hours	Operating Hours
TOTAL			Total is the sum of each column separately					

Job

Formation Name	Top	Bottom	Called Out	Date	Time	Time Zone
Formation Depth (MD)			On Location	01 - Jun - 2012	19:00	MST
Form Type		BHST	Job Started	01 - Jun - 2012	23:30	MST
Job depth MD	2655. ft	Job Depth TVD	Job Completed	02 - Jun - 2012	09:21	MST
Water Depth		Wk Ht Above Floor	Job Completed	02 - Jun - 2012	10:45	MST
Perforation Depth (MD)	From	To	Departed Loc	02 - Jun - 2012	13:00	MST

Well Data

Description	New / Used	Max pressure psig	Size in	ID in	Weight lbm/ft	Thread	Grade	Top MD ft	Bottom MD ft	Top TVD ft	Bottom TVD ft
Intermediate Open Hole				8.75				600.	2600.		
Intermediate Casing	Unknown		7.	6.366	23.		N-80	.	2600.		
Surface Casing	Unknown		9.625	8.921	36.		K-55	.	600.		

Sales/Rental/3rd Party (HES)

Description	Qty	Qty uom	Depth	Supplier
CLR,FLT,7 8RD 17-26PPF,2-3/4SSII	1	EA		
SHOE,FLT,7 8RD,2-3/4 SS II VLV	1	EA		
CLAMP - LIMIT - 7 - HINGED -	1	EA		
Description	Qty	Qty uom	Depth	Supplier
CTRZR ASSY,API,7 CSG X 8 3/4HOLE,HNGD	25	EA		
KIT,HALL WELD-A	1	EA		

MILEAGE FOR CEMENTING CREW,ZI	220	MI		
ZI FUEL SURCHG-CARS/PICKUPS<1 1/2TON	220	MI		
PLUG,CMTG,TOP,7,HWE,5.66 MIN/6.54 MAX CS	1	EA		
PLUG,CMTG,BOT,7,HWE,5.66 MIN/6.54 MAX CS	1	EA		

Tools and Accessories

Type	Size	Qty	Make	Depth	Type	Size	Qty	Make	Depth	Type	Size	Qty	Make
Guide Shoe					Packer					Top Plug			
Float Shoe					Bridge Plug					Bottom Plug			
Float Collar					Retainer					SSR plug set			
Insert Float										Plug Container			
Stage Tool										Centralizers			

Miscellaneous Materials

Gelling Agt		Conc		Surfactant		Conc		Acid Type		Qty		Conc	%
Treatment Fld		Conc		Inhibitor		Conc		Sand Type		Size		Qty	

Fluid Data

Stage/Plug #: 1

Fluid #	Stage Type	Fluid Name	Qty	Qty uom	Mixing Density lbm/gal	Yield ft3/sk	Mix Fluid Gal/sk	Rate bbl/min	Total Mix Fluid Gal/sk
1	Fresh Water		0.00	bbl	8.33	.0	.0	.0	
2	SUPER FLUSH 101	SUPER FLUSH 101 - SBM (12199)	20.00	bbl	10.	.0	.0	.0	
3	Fresh Water		0.00	bbl	8.33	.0	.0	.0	
4	EconoCem	ECONOCEM (TM) SYSTEM (452992)	135.0	sacks	12.2	2.25	12.13		12.13
	0.4 %	HALAD(R)-344, 50 LB (100003670)							
	0.125 lbm	POLY-E-FLAKE (101216940)							
	0.6 %	HR-5, 50 LB SK (100005050)							
	3 lbm	KOL-SEAL, BULK (100064233)							
	12.125 Gal	FRESH WATER							
5	ExtendaCem	EXTENDACEM (TM) SYSTEM (452981)	165.0	sacks	14.2	1.3	5.49		5.49
	0.2 %	HALAD(R)-344, 50 LB (100003670)							
	0.4 %	HR-5, 50 LB SK (100005050)							
	0.125 lbm	POLY-E-FLAKE (101216940)							
	3 lbm	KOL-SEAL, BULK (100064233)							
	5.489 Gal	FRESH WATER							
6	Displacement		103.00	bbl	9.			.0	

Calculated Values

Pressures

Volumes

Displacement		Shut In: Instant		Lost Returns		Cement Slurry		Pad	
Top Of Cement		5 Min		Cement Returns		Actual Displacement		Treatment	
Frac Gradient		15 Min		Spacers		Load and Breakdown		Total Job	

Rates

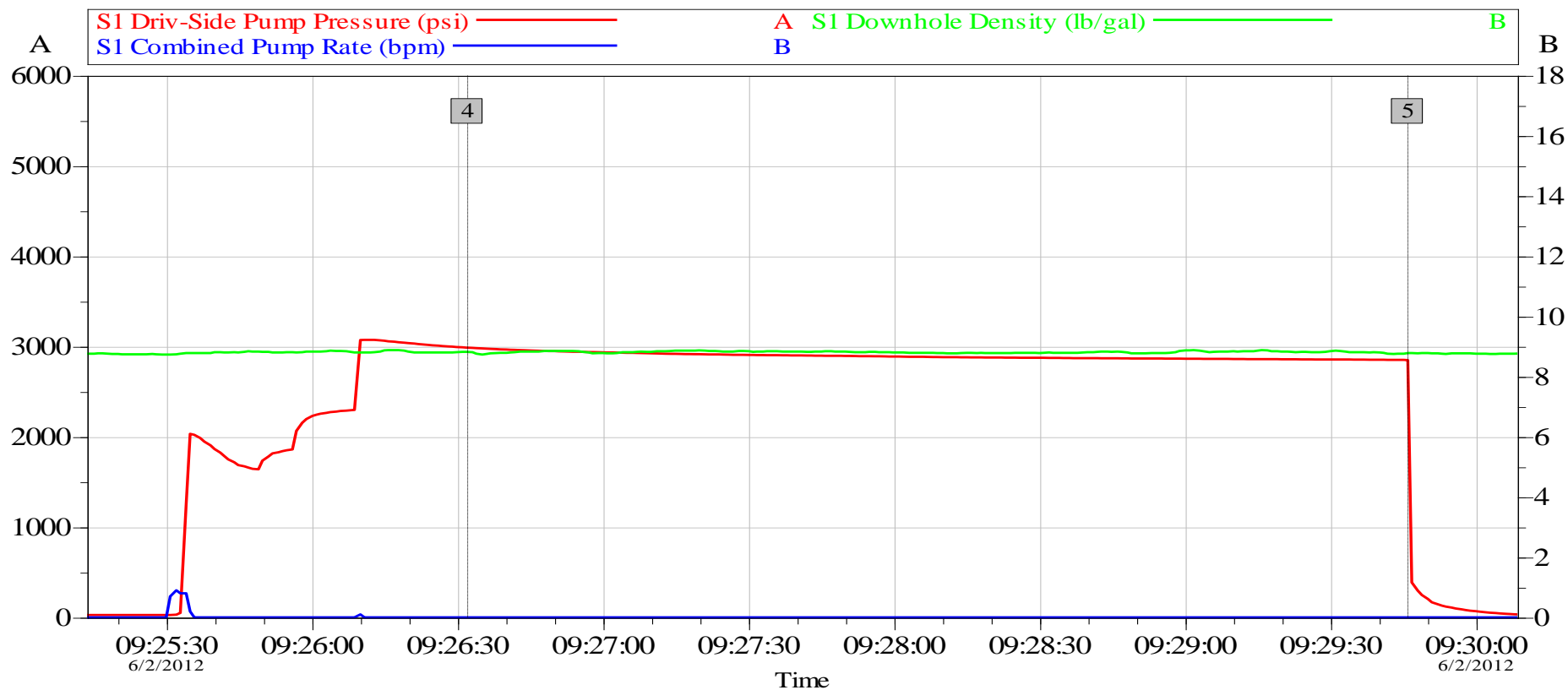
Circulating		Mixing		Displacement		Avg. Job	
Cement Left In Pipe	Amount	40 ft	Reason	Shoe Joint			
Frac Ring # 1 @	ID	Frac ring # 2 @	ID	Frac Ring # 3 @	ID	Frac Ring # 4 @	ID

The Information Stated Herein Is Correct	Customer Representative Signature
--	-----------------------------------

HALLIBURTON

Data Acquisition

Matrix Sheridan 11-2 Intermediate Pressure Test



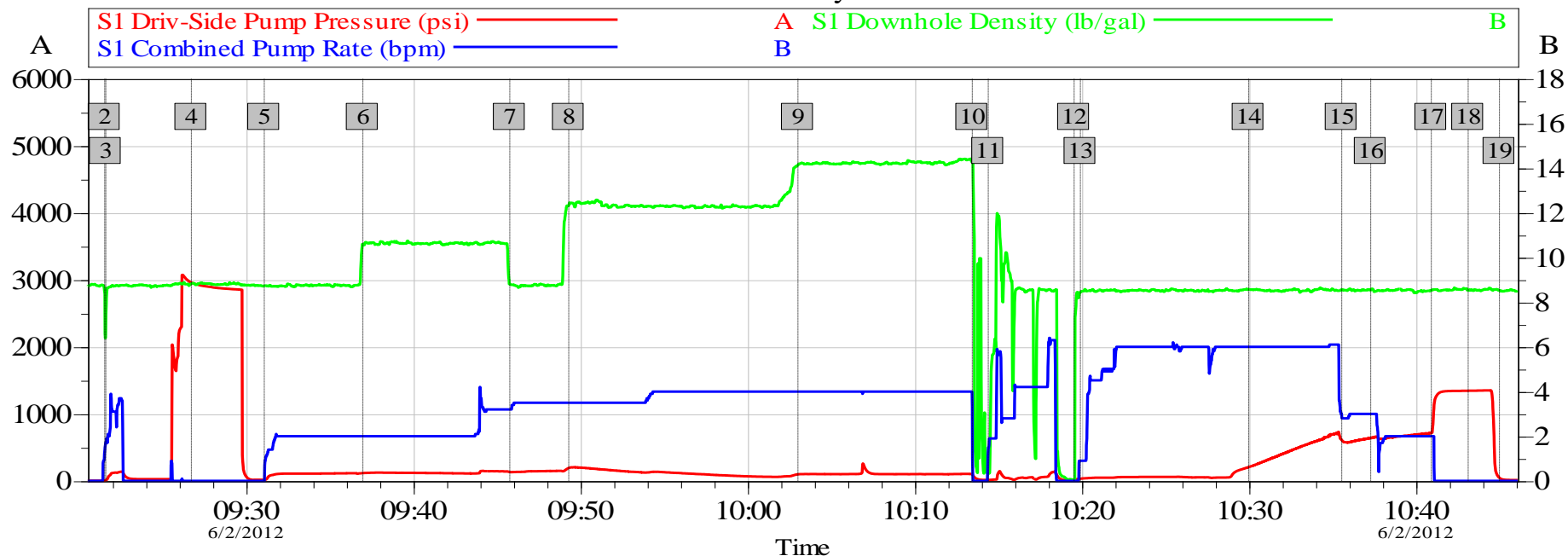
Global Event Log			
Intersection	SDPP	Intersection	SDPP
4 Test Lines	09:26:32 2986	5 Other	09:29:46 2786

Customer: Matrix	Job Date: 02-Jun-2012	Sales Order #: 9556142
Job Description: 7" Intermediate	API #: 051031192000	Elite #: 11512092
Service Supervisor: B. Fuchs	Service Operator: W. Voorhis	

OptiCem v6.4.10
02-Jun-12 11:11

Matrix Sheridan 11-2 Intermediate

Job Summary Chart



Global Event Log

2 Starting Job	09:21:33	3 Fill Lines	09:21:37	4 Test Lines	09:26:44
5 Pump Spacer 1	09:31:05	6 Pump Spacer 2	09:36:59	7 Pump Spacer 1	09:45:47
8 Pump Lead Cement	09:49:19	9 Pump Tail Cement	10:03:01	10 Shutdown	10:13:27
11 Wash Lines	10:14:25	12 Drop Plug	10:19:33	13 Pump Displacement	10:19:56
14 Spacer Returns to Surface	10:29:59	15 Slow Rate	10:35:34	16 Cement Returns to Surface	10:37:18
17 Bump Plug	10:40:56	18 Check Floats	10:43:08	19 Ending Job	10:45:00

Customer: Matrix
Job Description: 7" Intermediate
Service Supervisor: B. Fuchs

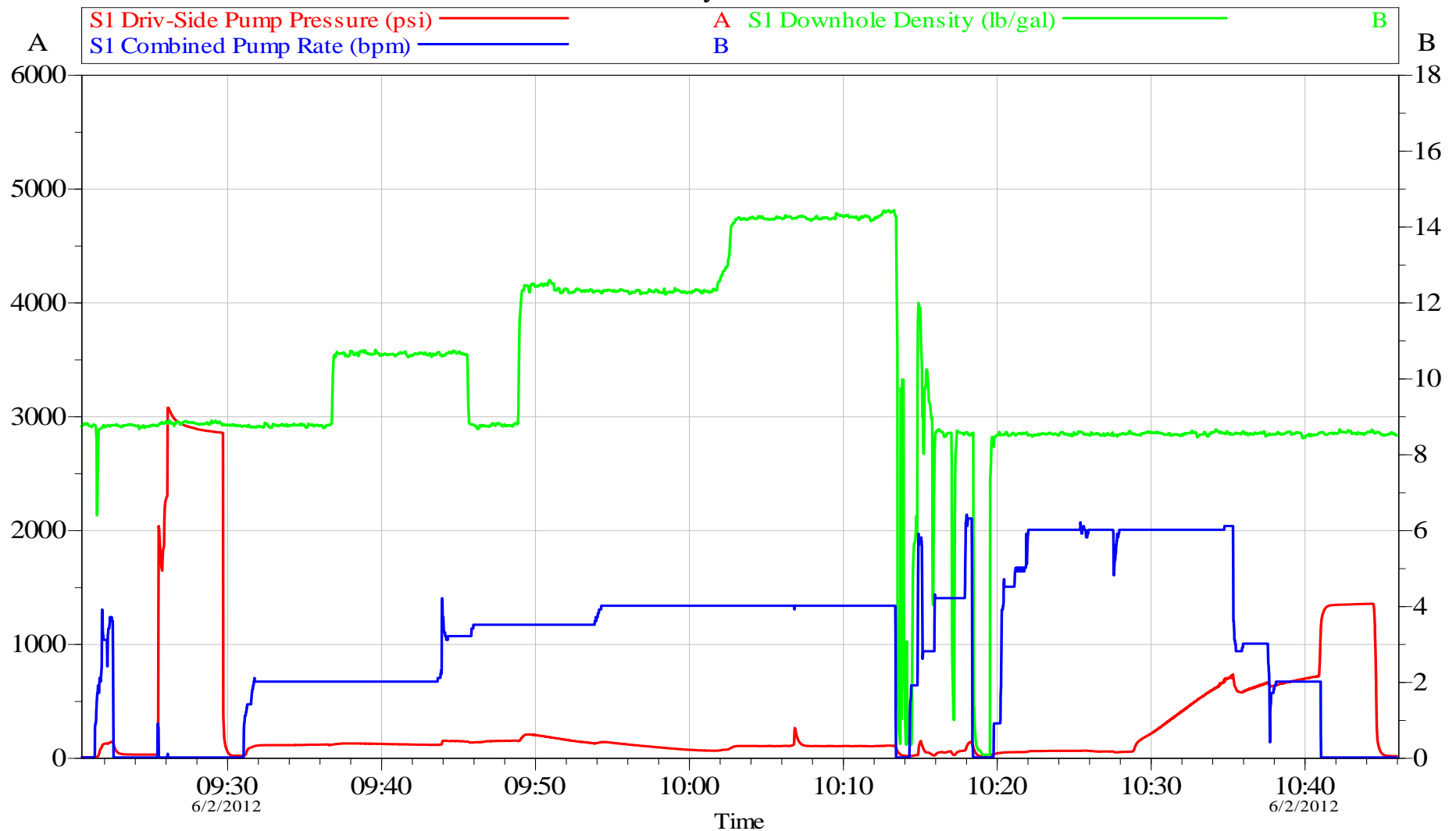
Job Date: 02-Jun-2012
API #: 051031192000
Service Operator: W. Voorhis

Sales Order #: 9556142
Elite #: 11512092

OptiCem v6.4.10
02-Jun-12 11:09

Matrix Sheridan 11-2 Intermediate

Job Summary Chart No Events



Customer: Matrix
Job Description: 7" Intermediate
Service Supervisor: B. Fuchs

Job Date: 02-Jun-2012
API #: 051031192000
Service Operator: W. Voorhis

Sales Order #: 9556142
Elite #: 11512092

OptiCem v6.4.10
02-Jun-12 11:08