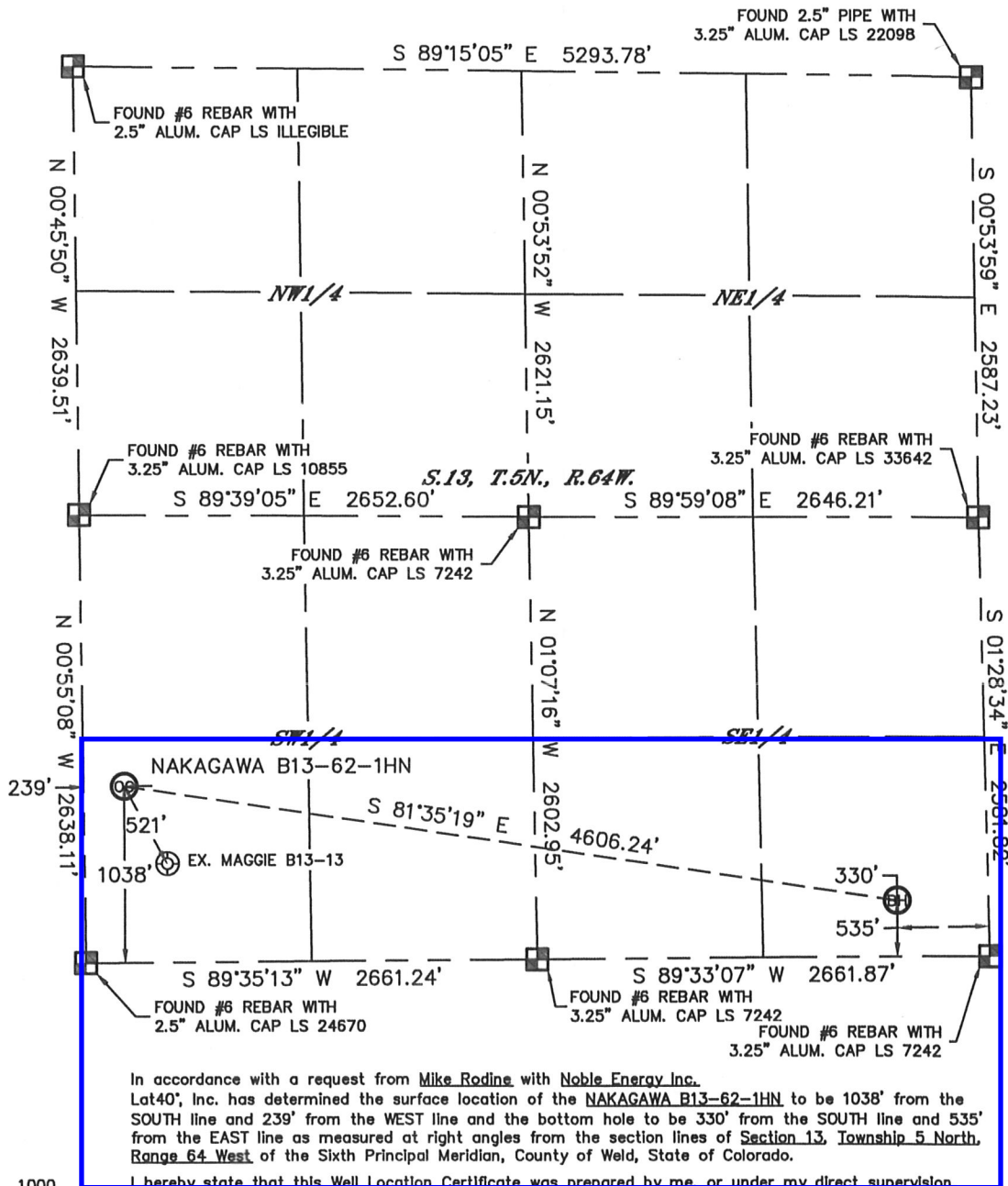


WELL LOCATION CERTIFICATE

THIS MAP DOES NOT REPRESENT A BOUNDARY SURVEY

SECTION: 13
TOWNSHIP: 5N
RANGE: 64W



I hereby state that this Well Location Certificate was prepared by me, or under my direct supervision that the fieldwork was completed on 6/28/2012, for and on behalf of Noble Energy Inc. That this is not a Land Survey Plat or an Improvement Survey Plat, and that it is not to be relied upon for establishment of fence, building, or other future improvement lines.

NOTE:

- Bearings shown are Grid Bearings of the Colorado State Plane Coordinate System, North Zone, North American Datum 1983/2007. The lineal dimensions as contained herein are based upon the "U.S. Survey Foot."
- Ground elevations are based on an observed GPS elevation (NAVD 1988 DATUM).
- NEAREST EXISTING WELL: MAGGIE B13-13, 521'
- IMPROVEMENTS: See LOCATION DRAWING for all visible improvements within 400' of disturbed area.
- SURFACE USE: CROPLAND
- INSTRUMENT OPERATOR: ADAM KELLY

NOTE

According to Colorado law, you must commence any legal action based upon any defect in this W.L.C. within three years after you discover such defect. In no event, may any action based upon any defect in this survey be commenced more than ten years after the date of the certificate shown hereon. (13-80-105 C.R.S.)

LEGEND

- = ALIQUOT MONUMENT AS DESCRIBED
- = CALCULATED POSITION

SURFACE LOCATION

LAT: 40.39487N
LONG: 104.50723W
PDOP: 2.3
ELEV: 4570'
1/4,1/4: SW1/4SW1/4
NEAREST PROPERTY LINE: 239' WEST

BOTTOM HOLE

LAT: 40.39288N
LONG: 104.49090W



Brian T. Brinkman—On Behalf of Lat40°, Inc.
Colorado Licensed Professional Land Surveyor No. 38175
DATE: rev 7/2/2012
PROJECT#: 2012029