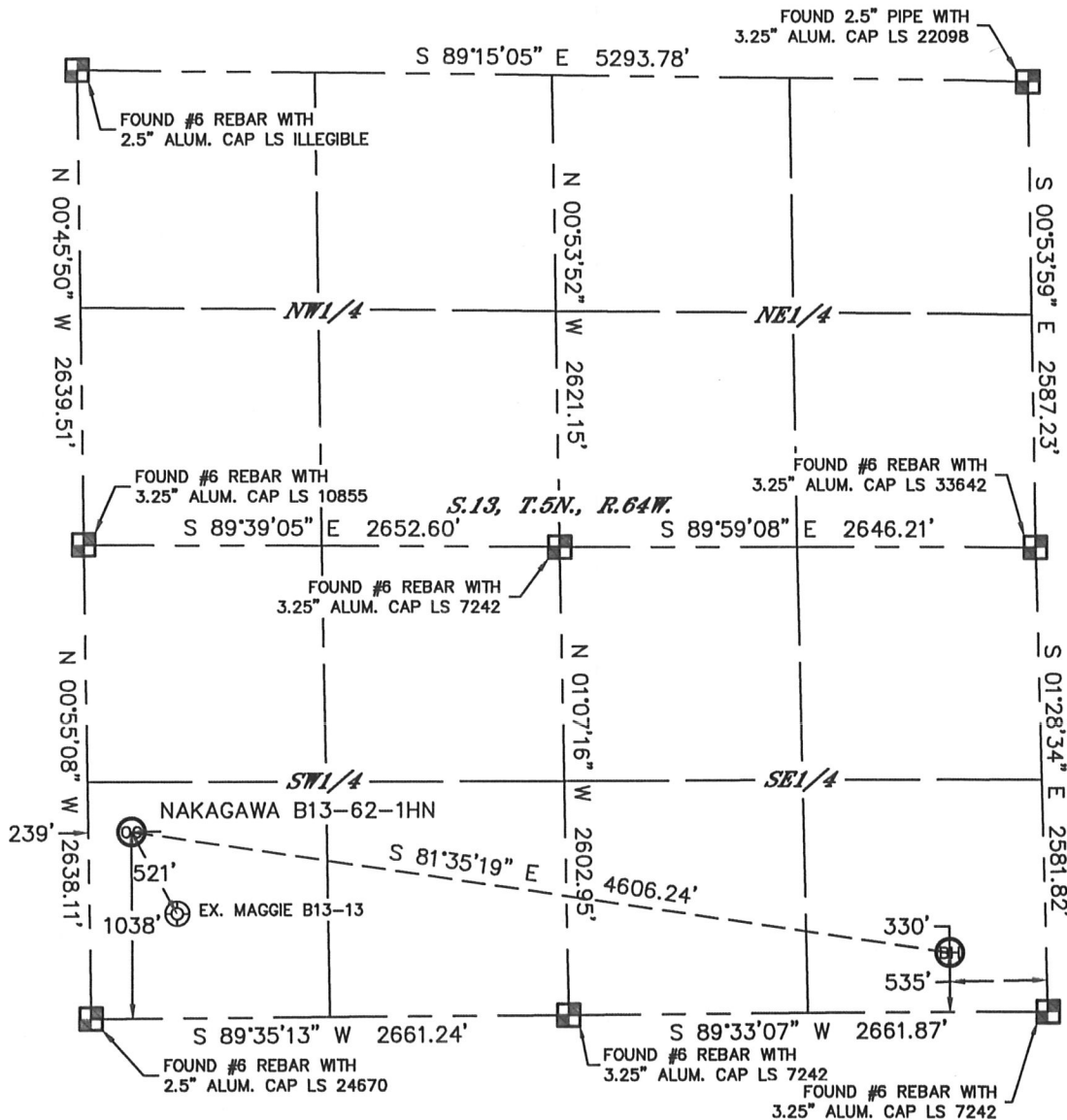


# WELL LOCATION CERTIFICATE

THIS MAP DOES NOT REPRESENT A BOUNDARY SURVEY

SECTION: 13  
TOWNSHIP: 5N  
RANGE: 64W



In accordance with a request from Mike Rodine with Noble Energy Inc.

Lat40°, Inc. has determined the surface location of the NAKAGAWA B13-62-1HN to be 1038' from the SOUTH line and 239' from the WEST line and the bottom hole to be 330' from the SOUTH line and 535' from the EAST line as measured at right angles from the section lines of Section 13, Township 5 North, Range 64 West of the Sixth Principal Meridian, County of Weld, State of Colorado.

I hereby state that this Well Location Certificate was prepared by me, or under my direct supervision, that the fieldwork was completed on 6/28/2012, for and on behalf of Noble Energy Inc. That this is not a Land Survey Plat or an Improvement Survey Plat, and that it is not to be relied upon for establishment of fence, building, or other future improvement lines.

## NOTE:

- 1) Bearings shown are Grid Bearings of the Colorado State Plane Coordinate System, North Zone, North American Datum 1983/2007. The lineal dimensions as contained herein are based upon the "U.S. Survey Foot."
- 2) Ground elevations are based on an observed GPS elevation (NAVD 1988 DATUM).
- 3) NEAREST EXISTING WELL: MAGGIE B13-13, 521'
- 4) IMPROVEMENTS: See LOCATION DRAWING for all visible improvements within 400' of disturbed area.
- 5) SURFACE USE: CROPLAND
- 6) INSTRUMENT OPERATOR: ADAM KELLY

## NOTE

According to Colorado law, you must commence any legal action based upon any defect in this W.L.C. within three years after you discover such defect. In no event, may any action based upon any defect in this survey be commenced more than ten years after the date of the certificate shown hereon. (13-80-105 C.R.S.)

## LEGEND

- = ALIQUOT MONUMENT AS DESCRIBED
- = CALCULATED POSITION

## SURFACE LOCATION

LAT: 40.39487N  
LONG: 104.50723W  
PDOP: 2.3  
ELEV: 4570'  
1/4, 1/4: SW1/4SW1/4  
NEAREST PROPERTY LINE: 239' WEST

## BOTTOM HOLE

LAT: 40.39288N  
LONG: 104.49090W

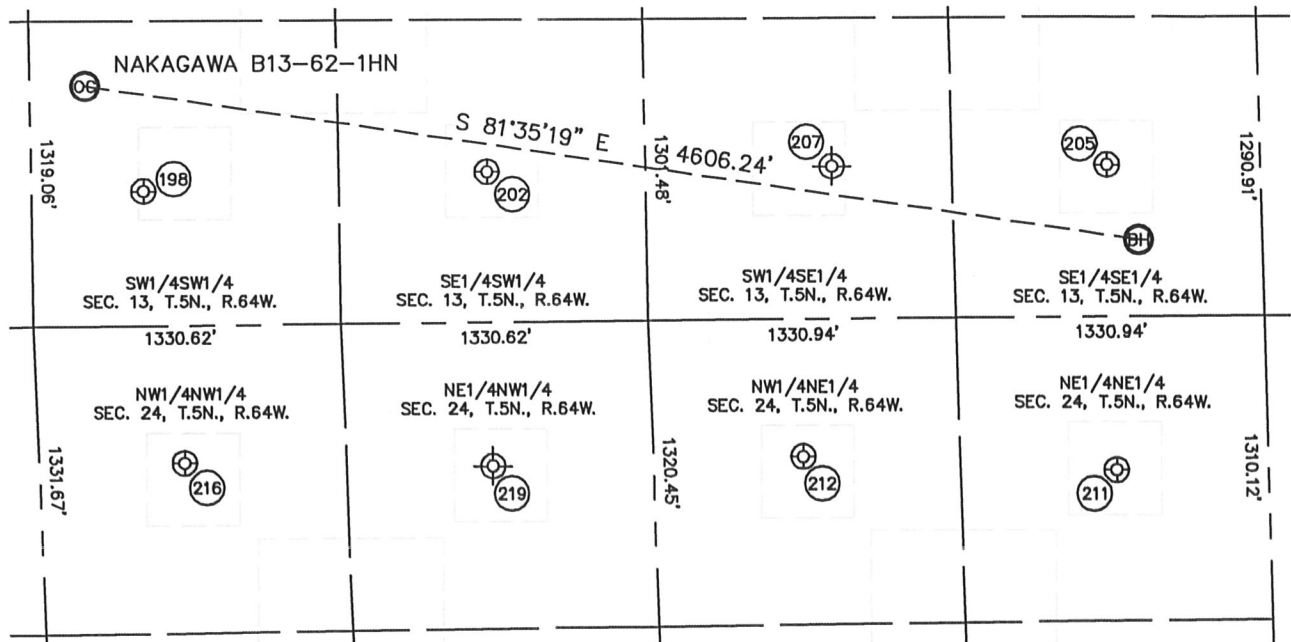


Brian T. Brinkman—On Behalf of Lat40°, Inc.  
Colorado Licensed Professional Surveyor No. 38175  
DATE: rev 7/2/2012  
PROJECT#: 2012029

# SITE SKETCH

NAKAGAWA B13-62-1HN

SECTION: 13  
TOWNSHIP: 5N  
RANGE: 64W



198

MAGGIE B13-13  
SW1/4SW1/4  
582' FSL  
486' FWL  
LAT-40.39361°N  
LONG-104.50633°W  
PDOP: 1.2  
ELEV: 4568'

202

FORD NO. 13-1  
SE1/4SW1/4  
652' FSL  
1972' FWL  
LAT-40.39378°N  
LONG-104.50100°W  
PDOP: 2.8  
ELEV: 4567'

205

NAKAGAWA B13-16  
SE1/4SE1/4  
655' FSL  
662' FEL  
LAT-40.39377°N  
LONG-104.49137°W  
PDOP: 3.2  
ELEV: 4567'

207

NAKAGAWA PMB 13-15  
(Plugged & Abandoned)  
SW1/4SE1/4  
660' FSL (COGCC)  
1850' FEL (COGCC)  
LAT-40.39379°N (COGCC)  
LONG-104.49571°W (COGCC)  
PDOP: N/A  
ELEV: 4563' (COGCC)

211

ROTHE 1-24  
NE1/4NE1/4  
661' FNL  
656' FEL  
LAT-40.39016°N  
LONG-104.49129°W  
PDOP: 2.2  
ELEV: 4563'

212

ROTHE 2-24  
NW1/4NE1/4  
592' FNL  
2008' FEL  
LAT-40.39036°N  
LONG-104.49614°W  
PDOP: 1.7  
ELEV: 4562'

216

OGALVIE 24-4  
NW1/4NW1/4  
593' FNL  
629' FWL  
LAT-40.39039°N  
LONG-104.50574°W  
PDOP: 2.2  
ELEV: 4564'

219

OGILVIE 24-3  
(Plugged & Abandoned)  
NE1/4NW1/4  
620' FSL (COGCC)  
1960' FWL (COGCC)  
LAT-40.39027°N (COGCC)  
LONG-104.50100°W (COGCC)  
PDOP: N/A  
ELEV: 4561' (COGCC)

