

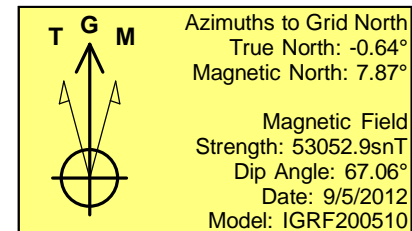
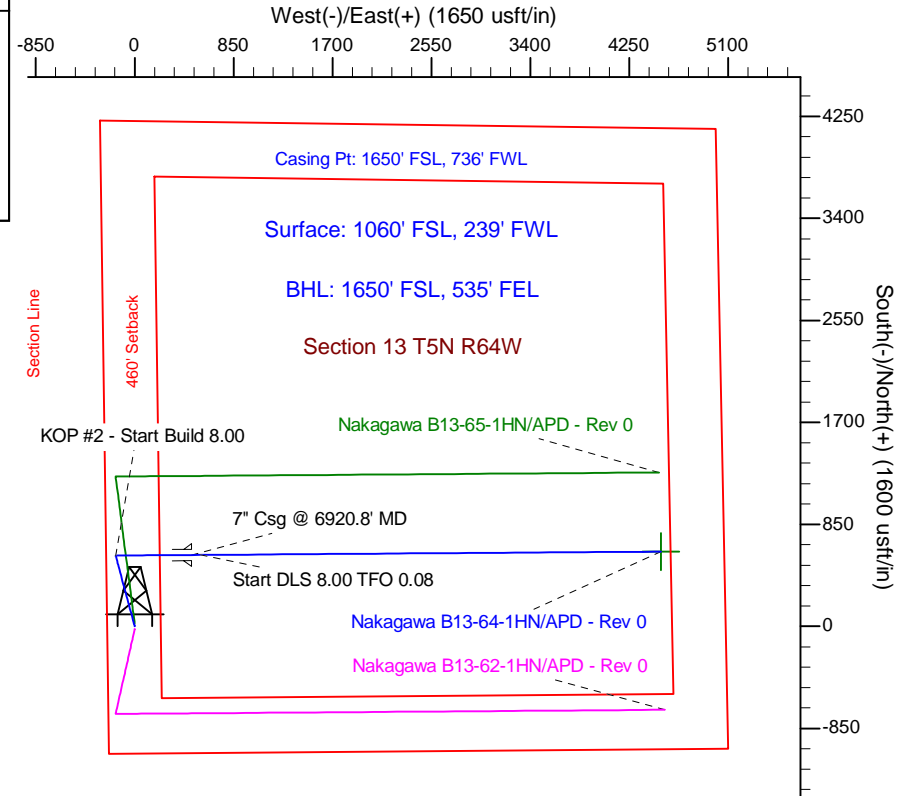
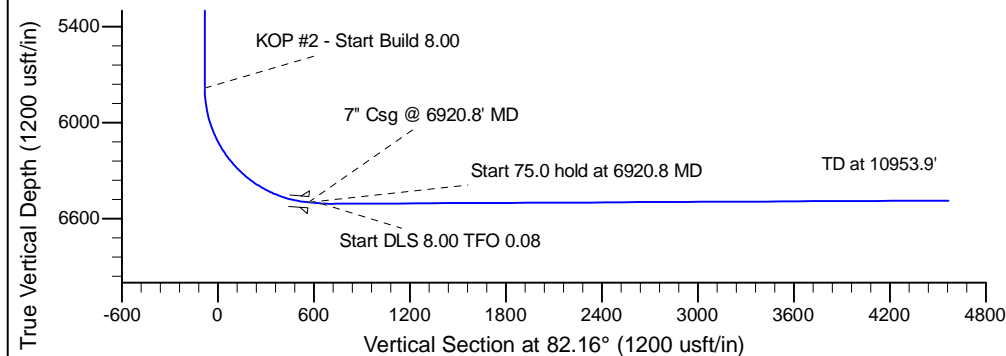
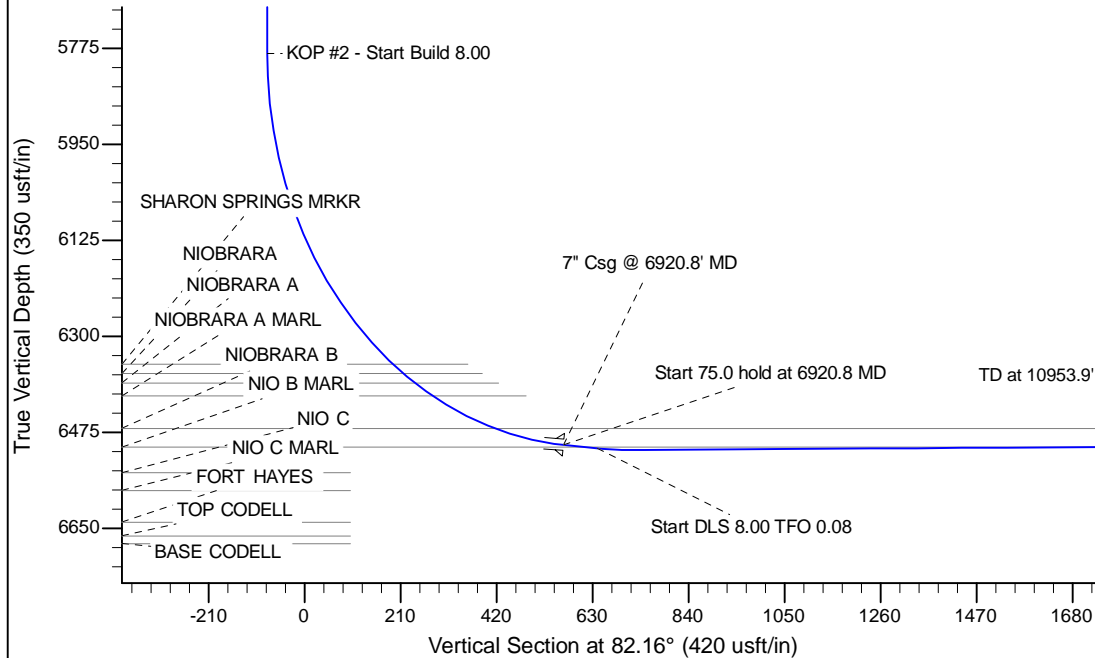
Project: Wattenberg Field
Site: B (Sec.13-T05N-R64W) Weld County, CO
Well: Nakagawa B13-64-1HN
Wellbore: Original Drilling
Design: APD - Rev 0

Northern Region Drilling

Geodetic System: US State Plane 1983
Datum: North American Datum 1983
Ellipsoid: GRS 1980
Zone: Colorado Northern Zone
System Datum: Mean Sea Level

SECTION DETAILS

Sec	MD	Inc	Azi	TVD	+N/-S	+E/-W	Dleg	TFace	VSec	Target
1	0.0	0.00	0.00	0.0	0.0	0.0	0.00	0.00	0.0	
2	1800.0	0.00	0.00	1800.0	0.0	0.0	0.00	0.00	0.0	
3	2399.9	15.00	344.47	2393.1	75.2	-20.9	2.50	344.47	-10.4	
4	4162.8	15.00	344.47	4095.9	514.8	-143.1	0.00	0.00	-71.5	
5	4762.7	0.00	0.00	4689.0	590.0	-164.0	2.50	180.00	-81.9	
6	5858.3	0.00	0.00	5784.6	590.0	-164.0	0.00	0.00	-81.9	
7	6920.8	85.00	89.59	6498.1	594.7	489.8	8.00	89.59	566.3	
8	6995.8	85.00	89.59	6504.6	595.2	564.5	0.00	0.00	640.4	
9	7062.0	90.30	89.60	6507.3	595.7	630.6	8.00	0.08	706.0	
10	10953.9	90.30	89.60	6487.1	623.1	4522.3	0.00	0.00	4565.0	Nakagawa B13-64-1HN BHL 1650'FSL, 535'FEL



WELL DETAILS: Nakagawa B13-64-1HN			
Ground Level: 4570.0		Latitude 40.394930	
Northing 1388261.28	Easting 3276511.63	Longitude -104.507230	
Plan: APD - Rev 0 (Nakagawa B13-64-1HN/Original Drilling)			
Created By: Carrie Willers		Date: 18:12, September 05 2012	
Checked: _____		Date: _____	
Reviewed: _____		Date: _____	
Approved: _____		Date: _____	