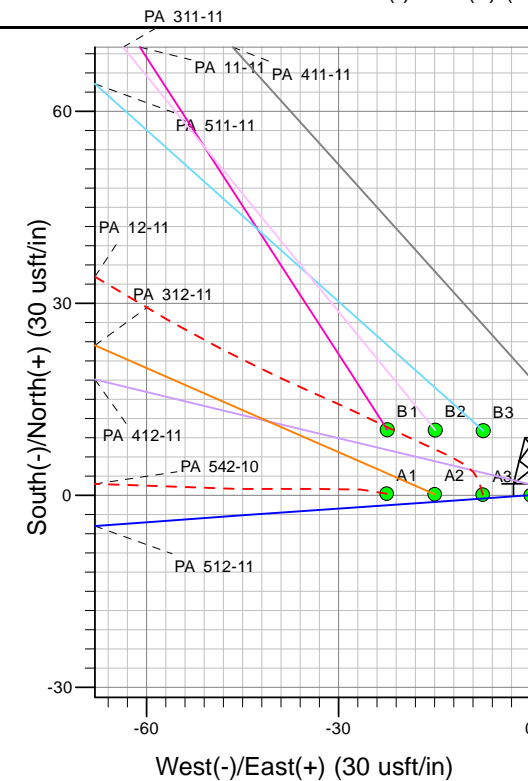
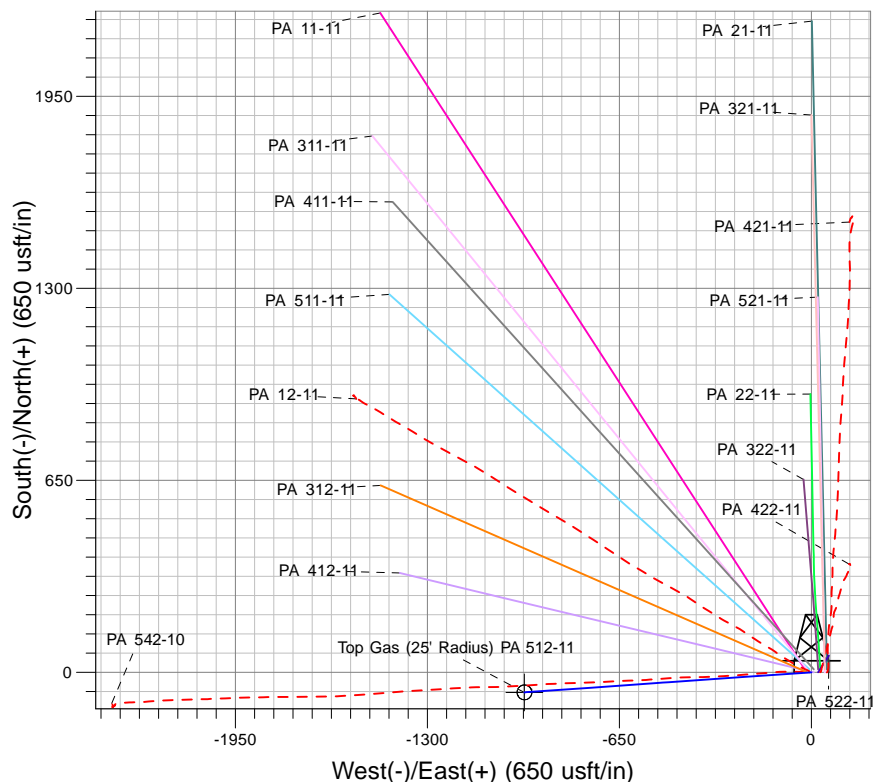
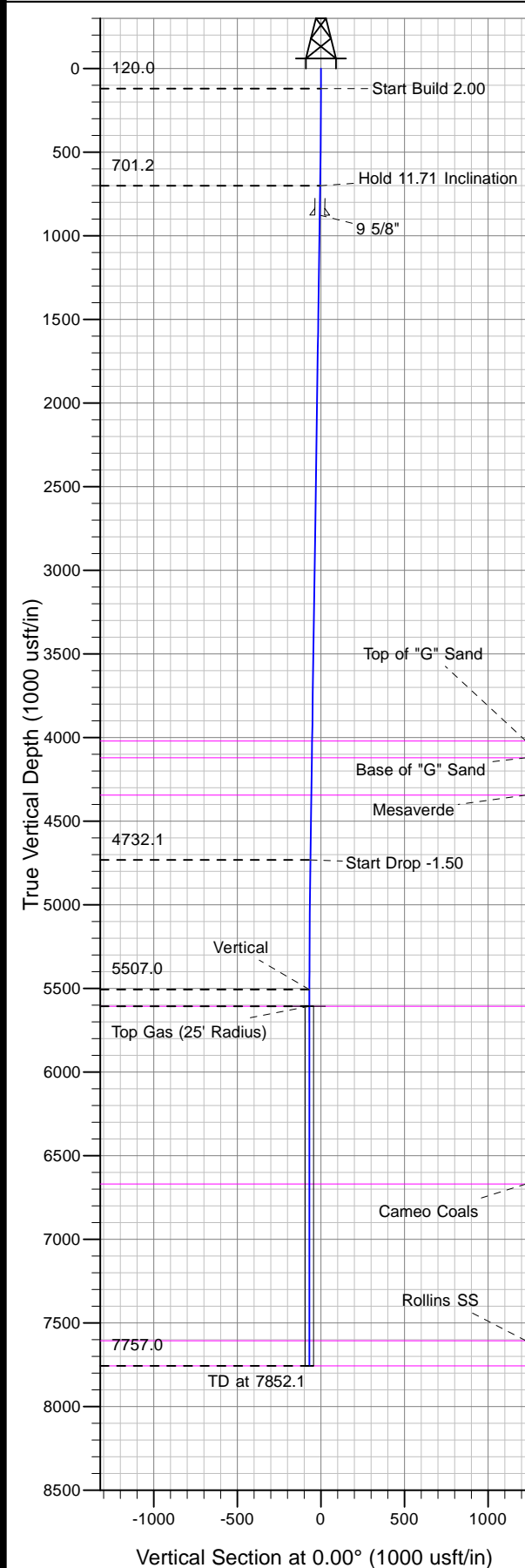




Well Name: PA 512-11
Surface Location: PA 22-11 Pad
North American Datum 1983 , US State Plane 1983, Colorado Central Zone
Ground Elevation: 6274.0
+N/-S +E/-W Northing Easting Latitude Longitude Slot
0.0 0.0 1599304.78 2303350.74 39° 27' 10.394 N 107° 58' 2.729 W A4
KELLY BUSHING @ 6300.0usft (Nabors 577 (26' RKB))



Project: PA 11-07S-095W
Site: PA 22-11 Pad
Well: PA 512-11
Plan #2 23Oct12 kjs

Azimuths to True North
Magnetic North: 10.58°
Magnetic Field
Strength: 52461.3snT
Dip Angle: 65.77°
Date: 5/26/2009
Model: IGRF2005-10

ANNOTATIONS

| MD | Inc | Azi | TVD | +N/-S | +E/-W | V/Sect | Departure | Annotation |
|--------|-------|--------|--------|-------|--------|--------|-----------|------------------------|
| 120.0 | 0.00 | 0.00 | 120.0 | 0.0 | 0.0 | 0.0 | 0.0 | Start Build 2.00 |
| 705.3 | 11.71 | 265.99 | 701.2 | -4.2 | -59.4 | -4.2 | 59.6 | Hold 11.71 Inclination |
| 4821.7 | 11.71 | 265.99 | 4732.1 | -62.6 | -892.5 | -62.6 | 894.7 | Start Drop -1.50 |
| 5602.1 | 0.00 | 0.00 | 5507.0 | -68.1 | -971.8 | -68.1 | 974.1 | Vertical |
| 5702.1 | 0.00 | 0.00 | 5607.0 | -68.1 | -971.8 | -68.1 | 974.1 | Top Gas |
| 7852.1 | 0.00 | 0.00 | 7757.0 | -68.1 | -971.8 | -68.1 | 974.1 | TD at 7852.1 |