

# KERR-MCGEE OIL & GAS ONSHORE LP

Location: COLORADO Slot: SLOT#02 GITTLEIN 30N-28HZ (175°FSL & 1168°FWL, SEC.33)  
Field: WELD COUNTY (KERR MCGEE) Well: GITTLEIN 30N-28HZ  
Facility: SEC.33-T2N-R65W Wellbore: GITTLEIN 30N-28HZ PWB

Plot reference wellpath is GITTLEIN 30N-28HZ (PERMIT) PWP

True vertical depths are referenced to Rig on SLOT#02 GITTLEIN 30N-28HZ (175°FSL & 1168°FWL, SEC.33) (RKB)	Grid System: NAD83 / Lambert Colorado SP, Northern Zone (501), US feet
Measured depths are referenced to Rig on SLOT#02 GITTLEIN 30N-28HZ (175°FSL & 1168°FWL, SEC.33) (RKB)	North Reference: True north
Rig on SLOT#02 GITTLEIN 30N-28HZ (175°FSL & 1168°FWL, SEC.33) (RKB) to Mean Sea Level: 4934 feet	Scale: True distance
Mean Sea Level to Mud line (At Slot: SLOT#02 GITTLEIN 30N-28HZ (175°FSL & 1168°FWL, SEC.33)): 0 feet	Depths are in feet
Coordinates are in feet referenced to Slot	Created by: wiljef02 on 8/13/2012

## Location Information

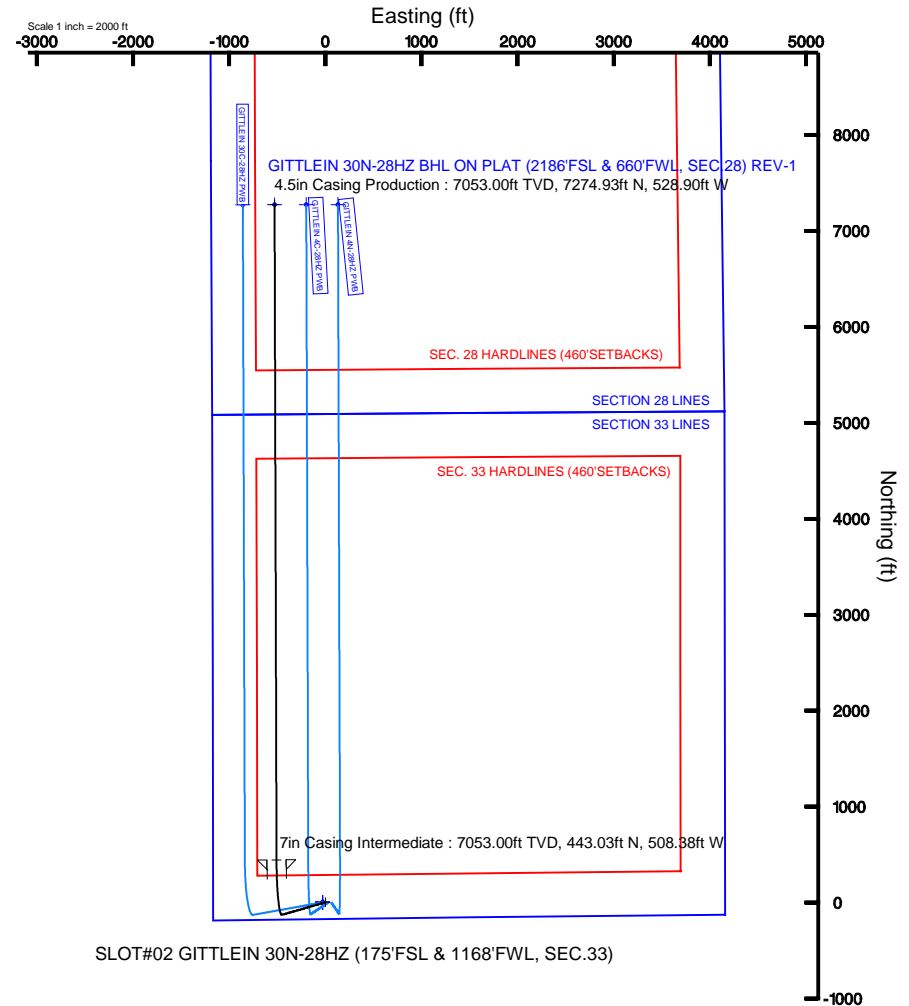
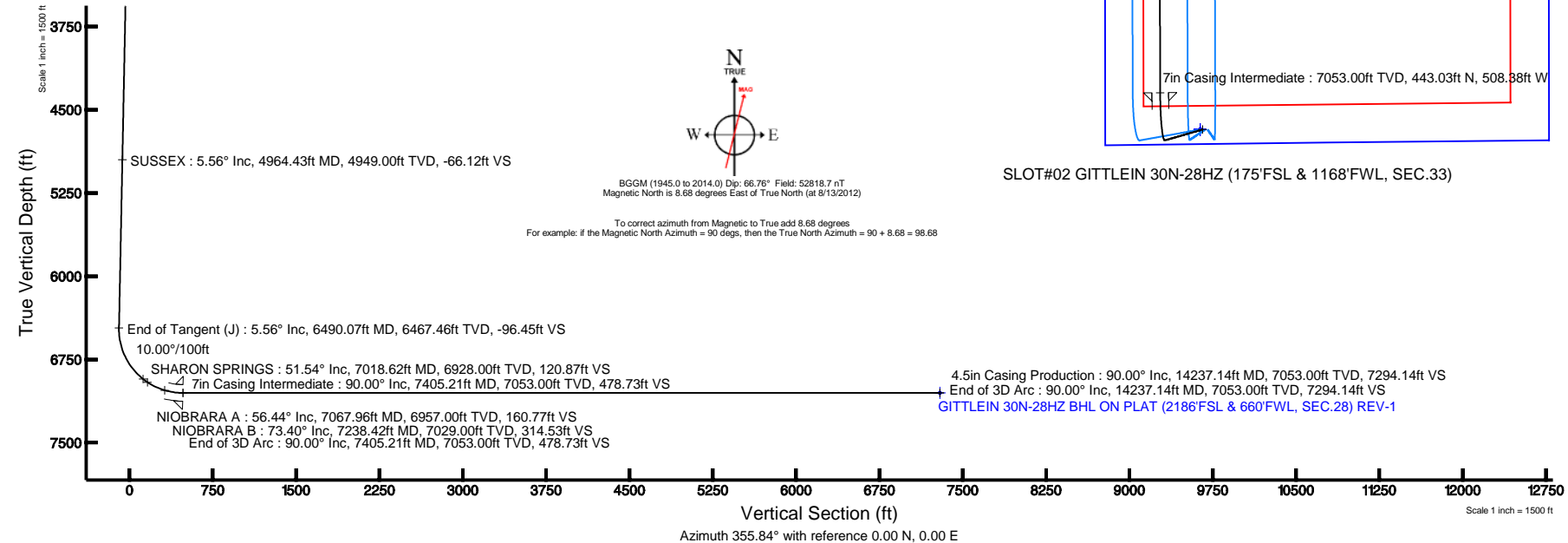
Facility Name	Grid East (US ft)	Grid North (US ft)	Latitude	Longitude
SEC.33-T2N-R65W	3231045.236	1276079.076	40°05'17.790"N	104°40'27.156"W
Slot	Local N (ft)	Local E (ft)	Grid East (US ft)	Grid North (US ft)
SLOT#02 GITTLEIN 30N-28HZ (175°FSL & 1168°FWL, SEC.33)	0.40	29.92	3231075.153	1276079.789
Rig on SLOT#02 GITTLEIN 30N-28HZ (175°FSL & 1168°FWL, SEC.33) (RKB) to Mud line (At Slot: SLOT#02 GITTLEIN 30N-28HZ (175°FSL & 1168°FWL, SEC.33))				4934ft
Mean Sea Level to Mud line (At Slot: SLOT#02 GITTLEIN 30N-28HZ (175°FSL & 1168°FWL, SEC.33))				0ft
Rig on SLOT#02 GITTLEIN 30N-28HZ (175°FSL & 1168°FWL, SEC.33) (RKB) to Mean Sea Level				4934ft

## Well Profile Data

Design Comment	MD (ft)	Inc (°)	Az (°)	TVD (ft)	Local N (ft)	Local E (ft)	DLS (°/100ft)	VS (ft)
Tie On	17.00	0.000	254.000	17.00	0.00	0.00	0.00	0.00
End of Tangent	1500.00	0.000	254.000	1500.00	0.00	0.00	0.00	0.00
End of Build (J)	1778.00	5.560	254.000	1777.56	-3.72	-12.96	2.00	-2.77
End of Tangent (J)	6490.07	5.560	254.000	6467.46	-129.56	-451.81	0.00	-96.45
End of 3D Arc	7405.21	90.000	359.827	7053.00	443.03	-508.38	10.00	478.73
End of 3D Arc	14237.14	90.000	359.829	7053.00	7274.93	-528.90	0.00	7294.14

## Targets

Name	MD (ft)	TVD (ft)	Local N (ft)	Local E (ft)	Grid East (US ft)	Grid North (US ft)	Latitude	Longitude
GITTLEIN 4 PAD SECTION 28 LINES		0.00	-0.40	-29.92	3231045.24	1276079.08	40°05'17.790"N	104°40'27.156"W
GITTLEIN 4 PAD SECTION 33 LINES		0.00	-0.40	-29.92	3231045.24	1276079.08	40°05'17.790"N	104°40'27.156"W
GITTLEIN 30N-28HZ BHL ON PLAT (2186°FSL & 660°FWL, SEC.28) REV-1	14237.14	7053.00	7274.93	-528.90	3230478.54	1283349.15	40°06'29.686"N	104°40'33.578"W
GITTLEIN 4 PAD SEC. 28 HARDLINES (460°SETBACKS)	7300.00		-0.40	-29.92	3231045.24	1276079.08	40°05'17.790"N	104°40'27.156"W
GITTLEIN 4 PAD SEC. 33 HARDLINES (460°SETBACKS)	7300.00		-0.40	-29.92	3231045.24	1276079.08	40°05'17.790"N	104°40'27.156"W





Planned Wellpath Report  
GITTLEIN 30N-28HZ (PERMIT) PWP  
Page 1 of 7



REFERENCE WELLPATH IDENTIFICATION			
Operator	KERR-MCGEE OIL & GAS ONSHORE LP	Slot	SLOT#02 GITTLEIN 30N-28HZ (175'FSL & 1168'FWL, SEC.33)
Area	COLORADO	Well	GITTLEIN 30N-28HZ
Field	WELD COUNTY (KERR MCGEE)	Wellbore	GITTLEIN 30N-28HZ PWB
Facility	SEC.33-T2N-R65W		

REPORT SETUP INFORMATION			
Projection System	NAD83 / Lambert Colorado SP, Northern Zone (501), US feet	Software System	WellArchitect® 3.0.2
North Reference	True	User	Wilsjef02
Scale	0.999961	Report Generated	8/13/2012 at 13:54:57
Convergence at slot	0.53° East	Database/Source file	WellArchitectDB/GITTLEIN_30N-28HZ_PWB.xml

WELLPATH LOCATION						
	Local coordinates		Grid coordinates		Geographic coordinates	
	North[ft]	East[ft]	Easting[US ft]	Northing[US ft]	Latitude	Longitude
Slot Location	0.40	29.92	3231075.15	1276079.76	40°05'17.794"N	104°40'26.771"W
Facility Reference Pt			3231045.24	1276079.08	40°05'17.790"N	104°40'27.156"W
Field Reference Pt			3197771.84	1268891.29	40°04'09.600"N	104°47'36.000"W

WELLPATH DATUM	
Calculation method	Minimum curvature
Horizontal Reference Pt	Slot
Vertical Reference Pt	Rig on SLOT#02 GITTLEIN 30N-28HZ (175'FSL & 1168'FWL, SEC.33) (RKB)
MD Reference Pt	Rig on SLOT#02 GITTLEIN 30N-28HZ (175'FSL & 1168'FWL, SEC.33) (RKB)
Field Vertical Reference	Mean Sea Level



# Planned Wellpath Report

GITTLEIN 30N-28HZ (PERMIT) PWP

Page 2 of 7



## REFERENCE WELLPATH IDENTIFICATION

Operator	KERR-MCGEE OIL & GAS ONSHORE LP	Slot	SLOT#02 GITTLEIN 30N-28HZ (175'FSL & 1168'FWL, SEC.33)
Area	COLORADO	Well	GITTLEIN 30N-28HZ
Field	WELD COUNTY (KERR MCGEE)	Wellbore	GITTLEIN 30N-28HZ PWB
Facility	SEC.33-T2N-R6SW		

## WELLPATH DATA (154 stations) † = interpolated/extrapolated station

MD [ft]	Inclination [°]	Azimuth [°]	TVD [ft]	Vert Sect [ft]	North [ft]	East [ft]	Latitude	Longitude	DLS [°/100ft]	Comments
0.00†	0.000	254.000	0.00	0.00	0.00	0.00	40°05'17.794"N	104°40'26.771"W	0.00	
17.00	0.000	254.000	17.00	0.00	0.00	0.00	40°05'17.794"N	104°40'26.771"W	0.00	Tie On
117.00†	0.000	254.000	117.00	0.00	0.00	0.00	40°05'17.794"N	104°40'26.771"W	0.00	
217.00†	0.000	254.000	217.00	0.00	0.00	0.00	40°05'17.794"N	104°40'26.771"W	0.00	
317.00†	0.000	254.000	317.00	0.00	0.00	0.00	40°05'17.794"N	104°40'26.771"W	0.00	
417.00†	0.000	254.000	417.00	0.00	0.00	0.00	40°05'17.794"N	104°40'26.771"W	0.00	
517.00†	0.000	254.000	517.00	0.00	0.00	0.00	40°05'17.794"N	104°40'26.771"W	0.00	
617.00†	0.000	254.000	617.00	0.00	0.00	0.00	40°05'17.794"N	104°40'26.771"W	0.00	
717.00†	0.000	254.000	717.00	0.00	0.00	0.00	40°05'17.794"N	104°40'26.771"W	0.00	
756.00†	0.000	254.000	756.00	0.00	0.00	0.00	40°05'17.794"N	104°40'26.771"W	0.00	FOX HILLS
817.00†	0.000	254.000	817.00	0.00	0.00	0.00	40°05'17.794"N	104°40'26.771"W	0.00	
917.00†	0.000	254.000	917.00	0.00	0.00	0.00	40°05'17.794"N	104°40'26.771"W	0.00	
1017.00†	0.000	254.000	1017.00	0.00	0.00	0.00	40°05'17.794"N	104°40'26.771"W	0.00	
1117.00†	0.000	254.000	1117.00	0.00	0.00	0.00	40°05'17.794"N	104°40'26.771"W	0.00	
1217.00†	0.000	254.000	1217.00	0.00	0.00	0.00	40°05'17.794"N	104°40'26.771"W	0.00	
1317.00†	0.000	254.000	1317.00	0.00	0.00	0.00	40°05'17.794"N	104°40'26.771"W	0.00	
1417.00†	0.000	254.000	1417.00	0.00	0.00	0.00	40°05'17.794"N	104°40'26.771"W	0.00	
1500.00	0.000	254.000	1500.00	0.00	0.00	0.00	40°05'17.794"N	104°40'26.771"W	0.00	End of Tangent
1517.00†	0.340	254.000	1517.00	-0.01	-0.01	-0.05	40°05'17.794"N	104°40'26.772"W	2.00	
1617.00†	2.340	254.000	1616.97	-0.49	-0.66	-2.30	40°05'17.787"N	104°40'26.801"W	2.00	
1717.00†	4.340	254.000	1716.79	-1.69	-2.26	-7.90	40°05'17.772"N	104°40'26.873"W	2.00	
1778.00	5.560	254.000	1777.56	-2.77	-3.72	-12.96	40°05'17.757"N	104°40'26.938"W	2.00	End of Build (J)
1817.00†	5.560	254.000	1816.38	-3.54	-4.76	-16.59	40°05'17.747"N	104°40'26.984"W	0.00	
1917.00†	5.560	254.000	1915.91	-5.53	-7.43	-25.90	40°05'17.721"N	104°40'27.104"W	0.00	
2017.00†	5.560	254.000	2015.44	-7.52	-10.10	-35.22	40°05'17.694"N	104°40'27.224"W	0.00	
2117.00†	5.560	254.000	2114.97	-9.51	-12.77	-44.53	40°05'17.668"N	104°40'27.344"W	0.00	
2217.00†	5.560	254.000	2214.50	-11.49	-15.44	-53.84	40°05'17.641"N	104°40'27.464"W	0.00	
2317.00†	5.560	254.000	2314.03	-13.48	-18.11	-63.16	40°05'17.615"N	104°40'27.584"W	0.00	
2417.00†	5.560	254.000	2413.56	-15.47	-20.78	-72.47	40°05'17.589"N	104°40'27.703"W	0.00	
2517.00†	5.560	254.000	2513.09	-17.46	-23.45	-81.78	40°05'17.562"N	104°40'27.823"W	0.00	
2617.00†	5.560	254.000	2612.62	-19.45	-26.12	-91.10	40°05'17.536"N	104°40'27.943"W	0.00	
2717.00†	5.560	254.000	2712.15	-21.44	-28.79	-100.41	40°05'17.509"N	104°40'28.063"W	0.00	
2817.00†	5.560	254.000	2811.68	-23.42	-31.46	-109.72	40°05'17.483"N	104°40'28.183"W	0.00	
2917.00†	5.560	254.000	2911.21	-25.41	-34.13	-119.04	40°05'17.457"N	104°40'28.303"W	0.00	
3017.00†	5.560	254.000	3010.73	-27.40	-36.80	-128.35	40°05'17.430"N	104°40'28.422"W	0.00	
3117.00†	5.560	254.000	3110.26	-29.39	-39.47	-137.66	40°05'17.404"N	104°40'28.542"W	0.00	
3217.00†	5.560	254.000	3209.79	-31.38	-42.14	-146.98	40°05'17.378"N	104°40'28.662"W	0.00	
3317.00†	5.560	254.000	3309.32	-33.36	-44.82	-156.29	40°05'17.351"N	104°40'28.782"W	0.00	
3417.00†	5.560	254.000	3408.85	-35.35	-47.49	-165.60	40°05'17.325"N	104°40'28.902"W	0.00	
3517.00†	5.560	254.000	3508.38	-37.34	-50.16	-174.92	40°05'17.298"N	104°40'29.022"W	0.00	
3617.00†	5.560	254.000	3607.91	-39.33	-52.83	-184.23	40°05'17.272"N	104°40'29.141"W	0.00	
3717.00†	5.560	254.000	3707.44	-41.32	-55.50	-193.54	40°05'17.246"N	104°40'29.261"W	0.00	
3817.00†	5.560	254.000	3806.97	-43.31	-58.17	-202.86	40°05'17.219"N	104°40'29.381"W	0.00	
3917.00†	5.560	254.000	3906.50	-45.29	-60.84	-212.17	40°05'17.193"N	104°40'29.501"W	0.00	
4017.00†	5.560	254.000	4006.03	-47.28	-63.51	-221.48	40°05'17.166"N	104°40'29.621"W	0.00	



# Planned Wellpath Report

GITTLEIN 30N-28HZ (PERMIT) PWP  
Page 3 of 7



## REFERENCE WELLPATH IDENTIFICATION

Operator	KERR-MCGEE OIL & GAS ONSHORE LP	Slot	SLOT#02 GITTLEIN 30N-28HZ (175'FSL & 1168'FWL, SEC.33)
Area	COLORADO	Well	GITTLEIN 30N-28HZ
Field	WELD COUNTY (KERR MCGEE)	Wellbore	GITTLEIN 30N-28HZ PWB
Facility	SEC.33-T2N-R6SW		

## WELLPATH DATA (154 stations) † = interpolated/extrapolated station

MD [ft]	Inclination [°]	Azimuth [°]	TVD [ft]	Vert Sect [ft]	North [ft]	East [ft]	Latitude	Longitude	DLS [°/100ft]	Comments
4117.00†	5.560	254.000	4105.56	-49.27	-66.18	-230.80	40°05'17.140"N	104°40'29.740"W	0.00	
4217.00†	5.560	254.000	4205.09	-51.26	-68.85	-240.11	40°05'17.114"N	104°40'29.860"W	0.00	
4317.00†	5.560	254.000	4304.62	-53.25	-71.52	-249.43	40°05'17.087"N	104°40'29.980"W	0.00	
4417.00†	5.560	254.000	4404.15	-55.24	-74.19	-258.74	40°05'17.061"N	104°40'30.100"W	0.00	
4517.00†	5.560	254.000	4503.68	-57.22	-76.86	-268.05	40°05'17.034"N	104°40'30.220"W	0.00	
4617.00†	5.560	254.000	4603.21	-59.21	-79.53	-277.37	40°05'17.008"N	104°40'30.340"W	0.00	
4717.00†	5.560	254.000	4702.74	-61.20	-82.20	-286.68	40°05'16.982"N	104°40'30.459"W	0.00	
4817.00†	5.560	254.000	4802.27	-63.19	-84.87	-295.99	40°05'16.955"N	104°40'30.579"W	0.00	
4917.00†	5.560	254.000	4901.80	-65.18	-87.55	-305.31	40°05'16.929"N	104°40'30.699"W	0.00	
4964.43†	5.560	254.000	4949.00	-66.12	-88.81	-309.72	40°05'16.916"N	104°40'30.756"W	0.00	SUSSEX
5017.00†	5.560	254.000	5001.33	-67.16	-90.22	-314.62	40°05'16.902"N	104°40'30.819"W	0.00	
5117.00†	5.560	254.000	5100.85	-69.15	-92.89	-323.93	40°05'16.876"N	104°40'30.939"W	0.00	
5217.00†	5.560	254.000	5200.38	-71.14	-95.56	-333.25	40°05'16.850"N	104°40'31.059"W	0.00	
5317.00†	5.560	254.000	5299.91	-73.13	-98.23	-342.56	40°05'16.823"N	104°40'31.178"W	0.00	
5417.00†	5.560	254.000	5399.44	-75.12	-100.90	-351.87	40°05'16.797"N	104°40'31.298"W	0.00	
5517.00†	5.560	254.000	5498.97	-77.11	-103.57	-361.19	40°05'16.770"N	104°40'31.418"W	0.00	
5617.00†	5.560	254.000	5598.50	-79.09	-106.24	-370.50	40°05'16.744"N	104°40'31.538"W	0.00	
5717.00†	5.560	254.000	5698.03	-81.08	-108.91	-379.81	40°05'16.718"N	104°40'31.658"W	0.00	
5817.00†	5.560	254.000	5797.56	-83.07	-111.58	-389.13	40°05'16.691"N	104°40'31.778"W	0.00	
5917.00†	5.560	254.000	5897.09	-85.06	-114.25	-398.44	40°05'16.665"N	104°40'31.897"W	0.00	
6017.00†	5.560	254.000	5996.62	-87.05	-116.92	-407.75	40°05'16.639"N	104°40'32.017"W	0.00	
6117.00†	5.560	254.000	6096.15	-89.04	-119.59	-417.07	40°05'16.612"N	104°40'32.137"W	0.00	
6217.00†	5.560	254.000	6195.68	-91.02	-122.26	-426.38	40°05'16.586"N	104°40'32.257"W	0.00	
6317.00†	5.560	254.000	6295.21	-93.01	-124.93	-435.69	40°05'16.559"N	104°40'32.377"W	0.00	
6417.00†	5.560	254.000	6394.74	-95.00	-127.60	-445.01	40°05'16.533"N	104°40'32.497"W	0.00	
6490.07	5.560	254.000	6467.46	-96.45	-129.56	-451.81	40°05'16.514"N	104°40'32.584"W	0.00	End of Tangent (J)
6517.00†	5.478	282.271	6494.28	-96.36	-129.64	-454.32	40°05'16.513"N	104°40'32.616"W	10.00	
6617.00†	12.379	334.567	6593.14	-84.99	-118.92	-463.62	40°05'16.619"N	104°40'32.736"W	10.00	
6717.00†	21.814	346.295	6688.64	-56.61	-91.12	-472.64	40°05'16.893"N	104°40'32.852"W	10.00	
6817.00†	31.589	351.067	6777.87	-12.07	-47.08	-481.13	40°05'17.329"N	104°40'32.961"W	10.00	
6917.00†	41.463	353.743	6858.14	47.26	11.85	-488.83	40°05'17.911"N	104°40'33.060"W	10.00	
7017.00†	51.379	355.536	6926.99	119.60	83.89	-495.50	40°05'18.623"N	104°40'33.146"W	10.00	
7018.62†	51.540	355.561	6928.00	120.87	85.15	-495.59	40°05'18.635"N	104°40'33.147"W	10.00	SHARON SPRINGS
7067.96†	56.442	356.265	6957.00	160.77	124.95	-498.43	40°05'19.029"N	104°40'33.184"W	10.00	NIOBRARA A
7117.00†	61.316	356.890	6982.34	202.73	166.85	-500.93	40°05'19.443"N	104°40'33.216"W	10.00	
7217.00†	71.264	358.007	7022.50	294.13	258.20	-504.97	40°05'20.346"N	104°40'33.268"W	10.00	
7238.42†	73.396	358.227	7029.00	314.53	278.60	-505.64	40°05'20.547"N	104°40'33.277"W	10.00	NIOBRARA B
7317.00†	81.218	358.998	7046.25	391.04	355.17	-507.48	40°05'21.304"N	104°40'33.300"W	10.00	
7405.21	90.000	359.827	7053.00	478.73	443.03	-508.38	40°05'22.172"N	104°40'33.312"W	10.00	End of 3D Arc
7417.00†	90.000	359.827	7053.00	490.49	454.82	-508.42	40°05'22.289"N	104°40'33.313"W	0.00	
7517.00†	90.000	359.827	7053.00	590.25	554.82	-508.72	40°05'23.277"N	104°40'33.316"W	0.00	
7617.00†	90.000	359.827	7053.00	690.01	654.82	-509.02	40°05'24.265"N	104°40'33.320"W	0.00	
7717.00†	90.000	359.827	7053.00	789.77	754.82	-509.32	40°05'25.253"N	104°40'33.324"W	0.00	
7817.00†	90.000	359.827	7053.00	889.52	854.82	-509.62	40°05'26.241"N	104°40'33.328"W	0.00	
7917.00†	90.000	359.827	7053.00	989.28	954.82	-509.93	40°05'27.230"N	104°40'33.332"W	0.00	



# Planned Wellpath Report

GITTLEIN 30N-28HZ (PERMIT) PWP

Page 4 of 7



## REFERENCE WELLPATH IDENTIFICATION

Operator	KERR-MCGEE OIL & GAS ONSHORE LP	Slot	SLOT#02 GITTLEIN 30N-28HZ (175'FSL & 1168'FWL, SEC.33)
Area	COLORADO	Well	GITTLEIN 30N-28HZ
Field	WELD COUNTY (KERR MCGEE)	Wellbore	GITTLEIN 30N-28HZ PWB
Facility	SEC.33-T2N-R65W		

## WELLPATH DATA (154 stations) † = interpolated/extrapolated station

MD [ft]	Inclination [°]	Azimuth [°]	TVD [ft]	Vert Sect [ft]	North [ft]	East [ft]	Latitude	Longitude	DLS [°/100ft]	Comments
8017.00†	90.000	359.827	7053.00	1089.04	1054.82	-510.23	40°05'28.218"N	104°40'33.336"W	0.00	
8117.00†	90.000	359.827	7053.00	1188.80	1154.82	-510.53	40°05'29.206"N	104°40'33.340"W	0.00	
8217.00†	90.000	359.827	7053.00	1288.56	1254.82	-510.83	40°05'30.194"N	104°40'33.344"W	0.00	
8317.00†	90.000	359.827	7053.00	1388.31	1354.82	-511.13	40°05'31.182"N	104°40'33.348"W	0.00	
8417.00†	90.000	359.827	7053.00	1488.07	1454.82	-511.43	40°05'32.171"N	104°40'33.352"W	0.00	
8517.00†	90.000	359.827	7053.00	1587.83	1554.82	-511.74	40°05'33.159"N	104°40'33.356"W	0.00	
8617.00†	90.000	359.827	7053.00	1687.59	1654.82	-512.04	40°05'34.147"N	104°40'33.359"W	0.00	
8717.00†	90.000	359.827	7053.00	1787.35	1754.82	-512.34	40°05'35.135"N	104°40'33.363"W	0.00	
8817.00†	90.000	359.827	7053.00	1887.11	1854.82	-512.64	40°05'36.124"N	104°40'33.367"W	0.00	
8917.00†	90.000	359.827	7053.00	1986.86	1954.82	-512.94	40°05'37.112"N	104°40'33.371"W	0.00	
9017.00†	90.000	359.827	7053.00	2086.62	2054.81	-513.24	40°05'38.100"N	104°40'33.375"W	0.00	
9117.00†	90.000	359.827	7053.00	2186.38	2154.81	-513.54	40°05'39.088"N	104°40'33.379"W	0.00	
9217.00†	90.000	359.827	7053.00	2286.14	2254.81	-513.84	40°05'40.076"N	104°40'33.383"W	0.00	
9317.00†	90.000	359.827	7053.00	2385.90	2354.81	-514.15	40°05'41.065"N	104°40'33.387"W	0.00	
9417.00†	90.000	359.828	7053.00	2485.65	2454.81	-514.45	40°05'42.053"N	104°40'33.391"W	0.00	
9517.00†	90.000	359.828	7053.00	2585.41	2554.81	-514.75	40°05'43.041"N	104°40'33.395"W	0.00	
9617.00†	90.000	359.828	7053.00	2685.17	2654.81	-515.05	40°05'44.029"N	104°40'33.398"W	0.00	
9717.00†	90.000	359.828	7053.00	2784.93	2754.81	-515.35	40°05'45.017"N	104°40'33.402"W	0.00	
9817.00†	90.000	359.828	7053.00	2884.69	2854.81	-515.65	40°05'46.006"N	104°40'33.406"W	0.00	
9917.00†	90.000	359.828	7053.00	2984.44	2954.81	-515.95	40°05'46.994"N	104°40'33.410"W	0.00	
10017.00†	90.000	359.828	7053.00	3084.20	3054.81	-516.25	40°05'47.982"N	104°40'33.414"W	0.00	
10117.00†	90.000	359.828	7053.00	3183.96	3154.81	-516.55	40°05'48.970"N	104°40'33.418"W	0.00	
10217.00†	90.000	359.828	7053.00	3283.72	3254.81	-516.85	40°05'49.959"N	104°40'33.422"W	0.00	
10317.00†	90.000	359.828	7053.00	3383.48	3354.81	-517.15	40°05'50.947"N	104°40'33.426"W	0.00	
10417.00†	90.000	359.828	7053.00	3483.24	3454.81	-517.45	40°05'51.935"N	104°40'33.430"W	0.00	
10517.00†	90.000	359.828	7053.00	3582.99	3554.81	-517.76	40°05'52.923"N	104°40'33.434"W	0.00	
10617.00†	90.000	359.828	7053.00	3682.75	3654.81	-518.06	40°05'53.911"N	104°40'33.437"W	0.00	
10717.00†	90.000	359.828	7053.00	3782.51	3754.81	-518.36	40°05'54.900"N	104°40'33.441"W	0.00	
10817.00†	90.000	359.828	7053.00	3882.27	3854.81	-518.66	40°05'55.888"N	104°40'33.445"W	0.00	
10917.00†	90.000	359.828	7053.00	3982.03	3954.81	-518.96	40°05'56.876"N	104°40'33.449"W	0.00	
11017.00†	90.000	359.828	7053.00	4081.78	4054.81	-519.26	40°05'57.864"N	104°40'33.453"W	0.00	
11117.00†	90.000	359.828	7053.00	4181.54	4154.81	-519.56	40°05'58.852"N	104°40'33.457"W	0.00	
11217.00†	90.000	359.828	7053.00	4281.30	4254.80	-519.86	40°05'59.841"N	104°40'33.461"W	0.00	
11317.00†	90.000	359.828	7053.00	4381.06	4354.80	-520.16	40°06'00.829"N	104°40'33.465"W	0.00	
11417.00†	90.000	359.828	7053.00	4480.82	4454.80	-520.46	40°06'01.817"N	104°40'33.469"W	0.00	
11517.00†	90.000	359.828	7053.00	4580.57	4554.80	-520.76	40°06'02.805"N	104°40'33.472"W	0.00	
11617.00†	90.000	359.828	7053.00	4680.33	4654.80	-521.06	40°06'03.793"N	104°40'33.476"W	0.00	
11717.00†	90.000	359.828	7053.00	4780.09	4754.80	-521.36	40°06'04.782"N	104°40'33.480"W	0.00	
11817.00†	90.000	359.828	7053.00	4879.85	4854.80	-521.66	40°06'05.770"N	104°40'33.484"W	0.00	
11917.00†	90.000	359.828	7053.00	4979.61	4954.80	-521.96	40°06'06.758"N	104°40'33.488"W	0.00	
12017.00†	90.000	359.828	7053.00	5079.36	5054.80	-522.26	40°06'07.746"N	104°40'33.492"W	0.00	
12117.00†	90.000	359.828	7053.00	5179.12	5154.80	-522.56	40°06'08.735"N	104°40'33.496"W	0.00	
12217.00†	90.000	359.828	7053.00	5278.88	5254.80	-522.86	40°06'09.723"N	104°40'33.500"W	0.00	
12317.00†	90.000	359.828	7053.00	5378.64	5354.80	-523.16	40°06'10.711"N	104°40'33.504"W	0.00	
12417.00†	90.000	359.828	7053.00	5478.40	5454.80	-523.46	40°06'11.699"N	104°40'33.507"W	0.00	



# Planned Wellpath Report

GITTLEIN 30N-28HZ (PERMIT) PWP

Page 5 of 7



## REFERENCE WELLPATH IDENTIFICATION

Operator	KERR-MCGEE OIL & GAS ONSHORE LP	Slot	SLOT#02 GITTLEIN 30N-28HZ (175'FSL & 1168'FWL, SEC.33)
Area	COLORADO	Well	GITTLEIN 30N-28HZ
Field	WELD COUNTY (KERR MCGEE)	Wellbore	GITTLEIN 30N-28HZ PWB
Facility	SEC.33-T2N-R65W		

## WELLPATH DATA (154 stations) † = interpolated/extrapolated station

MD [ft]	Inclination [°]	Azimuth [°]	TVD [ft]	Vert Sect [ft]	North [ft]	East [ft]	Latitude	Longitude	DLS [°/100ft]	Comments
12517.00†	90.000	359.828	7053.00	5578.15	5554.80	-523.76	40°06'12.687"N	104°40'33.511"W	0.00	
12617.00†	90.000	359.828	7053.00	5677.91	5654.80	-524.06	40°06'13.676"N	104°40'33.515"W	0.00	
12717.00†	90.000	359.828	7053.00	5777.67	5754.80	-524.36	40°06'14.664"N	104°40'33.519"W	0.00	
12817.00†	90.000	359.828	7053.00	5877.43	5854.80	-524.66	40°06'15.652"N	104°40'33.523"W	0.00	
12917.00†	90.000	359.828	7053.00	5977.19	5954.80	-524.96	40°06'16.640"N	104°40'33.527"W	0.00	
13017.00†	90.000	359.828	7053.00	6076.94	6054.80	-525.25	40°06'17.628"N	104°40'33.531"W	0.00	
13117.00†	90.000	359.828	7053.00	6176.70	6154.80	-525.55	40°06'18.617"N	104°40'33.535"W	0.00	
13217.00†	90.000	359.829	7053.00	6276.46	6254.80	-525.85	40°06'19.605"N	104°40'33.538"W	0.00	
13317.00†	90.000	359.829	7053.00	6376.22	6354.80	-526.15	40°06'20.593"N	104°40'33.542"W	0.00	
13417.00†	90.000	359.829	7053.00	6475.98	6454.79	-526.45	40°06'21.581"N	104°40'33.546"W	0.00	
13517.00†	90.000	359.829	7053.00	6575.74	6554.79	-526.75	40°06'22.569"N	104°40'33.550"W	0.00	
13617.00†	90.000	359.829	7053.00	6675.49	6654.79	-527.05	40°06'23.558"N	104°40'33.554"W	0.00	
13717.00†	90.000	359.829	7053.00	6775.25	6754.79	-527.35	40°06'24.546"N	104°40'33.558"W	0.00	
13817.00†	90.000	359.829	7053.00	6875.01	6854.79	-527.65	40°06'25.534"N	104°40'33.562"W	0.00	
13917.00†	90.000	359.829	7053.00	6974.77	6954.79	-527.95	40°06'26.522"N	104°40'33.566"W	0.00	
14017.00†	90.000	359.829	7053.00	7074.53	7054.79	-528.25	40°06'27.511"N	104°40'33.569"W	0.00	
14117.00†	90.000	359.829	7053.00	7174.28	7154.79	-528.55	40°06'28.499"N	104°40'33.573"W	0.00	
14217.00†	90.000	359.829	7053.00	7274.04	7254.79	-528.84	40°06'29.487"N	104°40'33.577"W	0.00	
14237.14	90.000	359.829	7053.00 <sup>†</sup>	7294.14	7274.93	-528.90	40°06'29.686"N	104°40'33.578"W	0.00	End of 3D Arc

## HOLE & CASING SECTIONS - Ref Wellbore: GITTLEIN 30N-28HZ PWB Ref Wellpath: GITTLEIN 30N-28HZ (PERMIT) PWP

String/Diameter	Start MD [ft]	End MD [ft]	Interval [ft]	Start TVD [ft]	End TVD [ft]	Start N/S [ft]	Start E/W [ft]	End N/S [ft]	End E/W [ft]
12.25in Open Hole	17.00	1300.00	1283.00	17.00	1300.00	0.00	0.00	0.00	0.00
9.625in Casing Surface	17.00	1300.00	1283.00	17.00	1300.00	0.00	0.00	0.00	0.00
8.75in Open Hole	1300.00	7405.21	6105.21	1300.00	7053.00	0.00	0.00	443.03	-508.38
7in Casing Intermediate	17.00	7405.21	7388.21	17.00	7053.00	0.00	0.00	443.03	-508.38
6.125in Open Hole	7405.21	14237.14	6831.93	7053.00	7053.00	443.03	-508.38	7274.93	-528.90
4.5in Casing Production	17.00	14237.14	14220.14	17.00	7053.00	0.00	0.00	7274.93	-528.90



# Planned Wellpath Report

GITTLEIN 30N-28HZ (PERMIT) PWP

Page 6 of 7

**REFERENCE WELLPATH IDENTIFICATION**

Operator	KERR-MCGEE OIL & GAS ONSHORE LP	Slot	SLOT#02 GITTLEIN 30N-28HZ (175'FSL & 1168'FWL, SEC.33)
Area	COLORADO	Well	GITTLEIN 30N-28HZ
Field	WELD COUNTY (KERR MCGEE)	Wellbore	GITTLEIN 30N-28HZ PWB
Facility	SEC.33-T2N-R65W		

**TARGETS**

Name	MD [ft]	TVD [ft]	North [ft]	East [ft]	Grid East [US ft]	Grid North [US ft]	Latitude	Longitude	Shape
GITTLEIN 4 PAD SECTION 28 LINES		0.00	-0.40	-29.92	3231045.24	1276079.08	40°05'17.790"N	104°40'27.156"W	polygon
GITTLEIN 4 PAD SECTION 33 LINES		0.00	-0.40	-29.92	3231045.24	1276079.08	40°05'17.790"N	104°40'27.156"W	polygon
1) GITTLEIN 30N-28HZ BHL ON PLAT (2186'FSL & 660'FWL, SEC.28) REV-1	14237.14	7053.00	7274.93	-528.90	3230478.54	1283349.15	40°06'29.686"N	104°40'33.578"W	point
GITTLEIN 4 PAD SEC. 28 HARDLINES (460'SETBACKS)		7300.00	-0.40	-29.92	3231045.24	1276079.08	40°05'17.790"N	104°40'27.156"W	polygon
GITTLEIN 4 PAD SEC. 33 HARDLINES (460'SETBACKS)		7300.00	-0.40	-29.92	3231045.24	1276079.08	40°05'17.790"N	104°40'27.156"W	polygon

**SURVEY PROGRAM - Ref Wellbore: GITTLEIN 30N-28HZ PWB Ref Wellpath: GITTLEIN 30N-28HZ (PERMIT) PWP**

Start MD [ft]	End MD [ft]	Positional Uncertainty Model	Log Name/Comment	Wellbore
17.00	7405.21	NaviTrak (Standard)		GITTLEIN 30N-28HZ PWB
7405.21	14237.14	OnTrak (Standard)		GITTLEIN 30N-28HZ PWB



Planned Wellpath Report  
GITTLEIN 30N-28HZ (PERMIT) PWP  
Page 7 of 7



REFERENCE WELLPATH IDENTIFICATION			
Operator	KERR-MCGEE OIL & GAS ONSHORE LP	Slot	SLOT#02 GITTLEIN 30N-28HZ (175'FSL & 1168'FWL, SEC.33)
Area	COLORADO	Well	GITTLEIN 30N-28HZ
Field	WELD COUNTY (KERR MCGEE)	Wellbore	GITTLEIN 30N-28HZ PWB
Facility	SEC.33-T2N-R65W		

WELLPATH COMMENTS				
MD [ft]	Inclination [°]	Azimuth [°]	TVD [ft]	Comment
756.00	0.000	254.000	756.00	FOX HILLS
4964.43	5.560	254.000	4949.00	SUSSEX
7018.62	51.540	355.561	6928.00	SHARON SPRINGS
7067.96	56.442	356.265	6957.00	NIOBRARA A
7238.42	73.396	358.227	7029.00	NIOBRARA B