

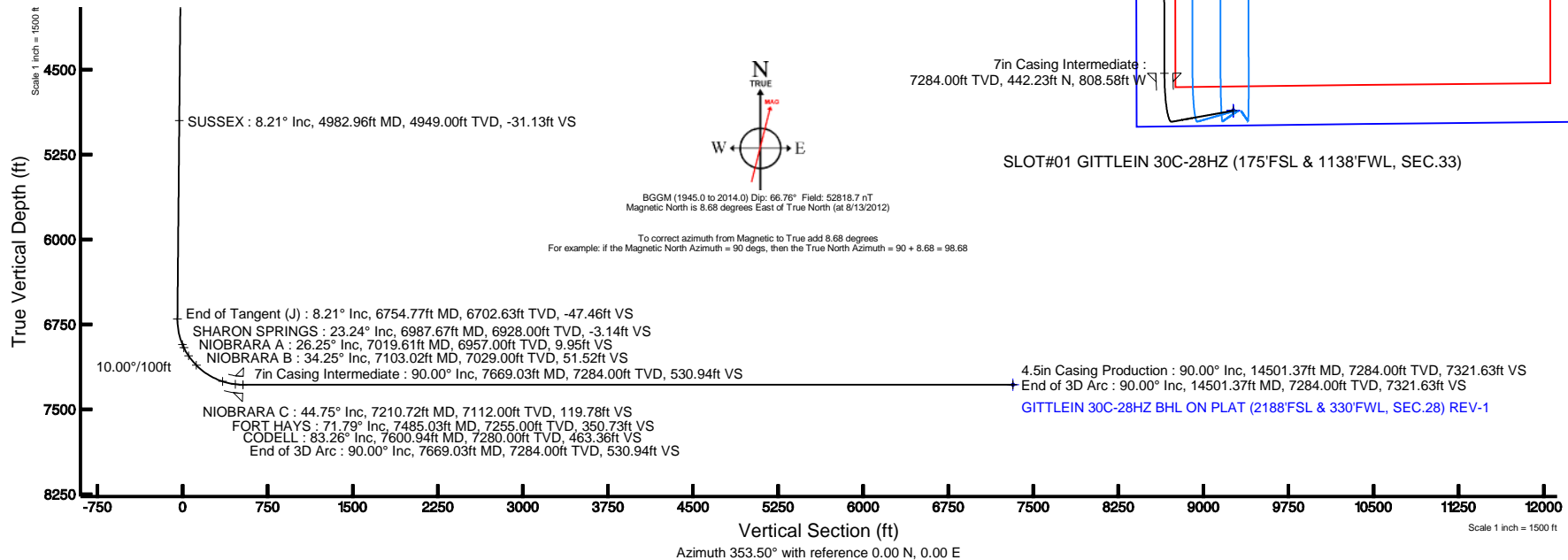
Location:	COLORADO	Slot:	SLOT#01 GITTLEIN 30C-28HZ (175'FSL & 1138'FWL, SEC.33)
Field:	WELD COUNTY (KERR MCGEE)	Well:	GITTLEIN 30C-28HZ
Facility:	SEC.33-T2N-R65W	Wellbore:	GITTLEIN 30C-28HZ PWB

Plot reference wellpath is GITTLEIN 30C-28HZ (PERMIT) PWP	
True vertical depths are referenced to Rig on SLOT#01 GITTLEIN 30C-28HZ (175FSL & 1138FWL, SEC.33) (RKB)	Grid System: NAD83 / Lambert Colorado SP, Northern Zone (501), US feet
Measured depths are referenced to Rig on SLOT#01 GITTLEIN 30C-28HZ (175FSL & 1138FWL, SEC.33) (RKB)	North Reference: True north
Rig on SLOT#01 GITTLEIN 30C-28HZ (175FSL & 1138FWL, SEC.33) (RKB) to Mean Sea Level: 4934 feet	Scale: True distance
Mean Sea Level to Mud line (At Slot: SLOT#01 GITTLEIN 30C-28HZ (175FSL & 1138FWL, SEC.33): 0 feet	Depths are in feet
Coordinates are in feet referenced to Slot	Created by: wlsjef02 on 8/13/2012

Facility Name				Grid East (US Ft)	Grid North (US Ft)	Latitude	Longitude
SEC-33-T2N-R68W				3231045.236	1278079.076	49°05'17.790"N	104°42'27.156"W
Box	Local N (ft)		Local E (ft)	Grid East (US Ft)	Grid North (US Ft)	Latitude	Longitude
SLOT#01 GITTLEN 30C-28H2 (179FSL & 1138FVSL, SEC.33)	0.00		0.00	3231045.236	1278079.076	49°05'17.790"N	104°42'27.156"W
Reg on SLOT#01 GITTLEN 30C-28H2 (179FSL & 1138FVSL, SEC.33) (R68) to Mut line (At Slot: SLOT#01 GITTLEN 30C-28H2 (179FSL & 1138FVSL, SEC.33))						4934R1	
Mean Sea Level to Mut line (At Slot: SLOT#01 GITTLEN 30C-28H2 (179FSL & 1138FVSL, SEC.33))						0ft	
Reg on SLOT#01 GITTLEN 30C-28H2 (179FSL & 1138FVSL, SEC.33) (R68) to Mean Sea Level						4934R1	

Design Comment	MD (ft)	Inc (°)	Az (°)	TVD (ft)	Local N (ft)	Local E (ft)	DLS (°/100ft)	VS (ft)
Tie On	17.00	0.000	259.800	17.00	0.00	0.00	0.00	0.00
End of Tangent	1400.00	0.000	259.800	1400.00	0.00	0.00	0.00	0.00
End of Build (J)	1810.75	8.215	259.800	1809.34	-5.21	-28.93	2.00	-1.90
End of Tangent (J)	6754.77	8.215	259.800	6702.63	-130.31	-724.21	0.00	-47.46
End of 3D Arc	7669.03	90.000	359.828	7284.00	442.22	-808.58	10.00	530.94
End of 3D Arc	14501.37	90.000	359.829	7284.00	7274.54	-829.06	0.00	7321.63

Name	MD (ft)	TVD (ft)	Local N (ft)	Local E (ft)	Grid East (US ft)	Grid North (US ft)	Latitude	Longitude
GITTLER 4 PAD SECTION 28 LINES	0.00	0.00	0.00	3231045.24	1276079.08	40°05'17.790"N	104°40'27.156"W	
GITTLER 4 PAD SECTION 38 LINES	0.00	0.00	0.00	3231045.24	1276079.08	40°05'17.790"N	104°40'27.156"W	
GITTLER 30C 28HZ BHK ON PLAY (2168 FSL & 3307FSL SEC.28) REV.1	14501.37	7284.00	7274.54	-629.06	3230148.50	1283345.28	40°06'29.676"N	104°40'37.826"W
GITTLER 4 PAD SEC. 28 HANDLINE S (4607 SETBACKS)	7300.00	0.00	0.00	3231045.24	1276079.08	40°05'17.790"N	104°40'27.156"W	
GITTLER 4 PAD SEC. 33 HANDLINE S (4607 SETBACKS)	7300.00	0.00	0.00	3231045.24	1276079.08	40°05'17.790"N	104°40'27.156"W	





Planned Wellpath Report
GITTLEIN 30C-28HZ (PERMIT) PWP
Page 1 of 7



REFERENCE WELLPATH IDENTIFICATION			
Operator	KERR-MCGEE OIL & GAS ONSHORE LP	Slot	SLOT#01 GITTLEIN 30C-28HZ (175'FSL & 1138'FWL, SEC.33)
Area	COLORADO	Well	GITTLEIN 30C-28HZ
Field	WELD COUNTY (KERR MCGEE)	Wellbore	GITTLEIN 30C-28HZ PWB
Facility	SEC.33-T2N-R65W		

REPORT SETUP INFORMATION			
Projection System	NAD83 / Lambert Colorado SP, Northern Zone (501), US feet	Software System	WellArchitect® 3.0.2
North Reference	True	User	Wilsjef02
Scale	0.999961	Report Generated	8/13/2012 at 13:37:34
Convergence at slot	0.53° East	Database/Source file	WellArchitectDB/GITTLEIN_30C-28HZ_PWB.xml

WELLPATH LOCATION						
	Local coordinates		Grid coordinates		Geographic coordinates	
	North[ft]	East[ft]	Easting[US ft]	Northing[US ft]	Latitude	Longitude
Slot Location	0.00	0.00	3231045.24	1276079.08	40°05'17.790"N	104°40'27.156"W
Facility Reference Pt			3231045.24	1276079.08	40°05'17.790"N	104°40'27.156"W
Field Reference Pt			3197771.84	1268891.29	40°04'09.600"N	104°47'36.000"W

WELLPATH DATUM	
Calculation method	Minimum curvature
Horizontal Reference Pt	Slot
Vertical Reference Pt	Rig on SLOT#01 GITTLEIN 30C-28HZ (175'FSL & 1138'FWL, SEC.33) (RKB)
MD Reference Pt	Rig on SLOT#01 GITTLEIN 30C-28HZ (175'FSL & 1138'FWL, SEC.33) (RKB)
Field Vertical Reference	Mean Sea Level



Planned Wellpath Report

GITTLEIN 30C-28HZ (PERMIT) PWP

Page 2 of 7



REFERENCE WELLPATH IDENTIFICATION

Operator	KERR-MCGEE OIL & GAS ONSHORE LP	Slot	SLOT#01 GITTLEIN 30C-28HZ (175'FSL & 1138'FWL, SEC.33)
Area	COLORADO	Well	GITTLEIN 30C-28HZ
Field	WELD COUNTY (KERR MCGEE)	Wellbore	GITTLEIN 30C-28HZ PWB
Facility	SEC.33-T2N-R6SW		

WELLPATH DATA (159 stations) † = interpolated/extrapolated station										
MD [ft]	Inclination [°]	Azimuth [°]	TVD [ft]	Vert Sect [ft]	North [ft]	East [ft]	Latitude	Longitude	DLS [°/100ft]	Comments
0.00†	0.000	259.800	0.00	0.00	0.00	0.00	40°05'17.790"N	104°40'27.156"W	0.00	
17.00	0.000	259.800	17.00	0.00	0.00	0.00	40°05'17.790"N	104°40'27.156"W	0.00	Tie On
117.00†	0.000	259.800	117.00	0.00	0.00	0.00	40°05'17.790"N	104°40'27.156"W	0.00	
217.00†	0.000	259.800	217.00	0.00	0.00	0.00	40°05'17.790"N	104°40'27.156"W	0.00	
317.00†	0.000	259.800	317.00	0.00	0.00	0.00	40°05'17.790"N	104°40'27.156"W	0.00	
417.00†	0.000	259.800	417.00	0.00	0.00	0.00	40°05'17.790"N	104°40'27.156"W	0.00	
517.00†	0.000	259.800	517.00	0.00	0.00	0.00	40°05'17.790"N	104°40'27.156"W	0.00	
617.00†	0.000	259.800	617.00	0.00	0.00	0.00	40°05'17.790"N	104°40'27.156"W	0.00	
717.00†	0.000	259.800	717.00	0.00	0.00	0.00	40°05'17.790"N	104°40'27.156"W	0.00	
756.00†	0.000	259.800	756.00	0.00	0.00	0.00	40°05'17.790"N	104°40'27.156"W	0.00	FOX HILLS
817.00†	0.000	259.800	817.00	0.00	0.00	0.00	40°05'17.790"N	104°40'27.156"W	0.00	
917.00†	0.000	259.800	917.00	0.00	0.00	0.00	40°05'17.790"N	104°40'27.156"W	0.00	
1017.00†	0.000	259.800	1017.00	0.00	0.00	0.00	40°05'17.790"N	104°40'27.156"W	0.00	
1117.00†	0.000	259.800	1117.00	0.00	0.00	0.00	40°05'17.790"N	104°40'27.156"W	0.00	
1217.00†	0.000	259.800	1217.00	0.00	0.00	0.00	40°05'17.790"N	104°40'27.156"W	0.00	
1317.00†	0.000	259.800	1317.00	0.00	0.00	0.00	40°05'17.790"N	104°40'27.156"W	0.00	
1400.00	0.000	259.800	1400.00	0.00	0.00	0.00	40°05'17.790"N	104°40'27.156"W	0.00	End of Tangent
1417.00†	0.340	259.800	1417.00	0.00	-0.01	-0.05	40°05'17.790"N	104°40'27.157"W	2.00	
1517.00†	2.340	259.800	1516.97	-0.15	-0.42	-2.35	40°05'17.786"N	104°40'27.186"W	2.00	
1617.00†	4.340	259.800	1616.79	-0.53	-1.45	-8.08	40°05'17.776"N	104°40'27.260"W	2.00	
1717.00†	6.340	259.800	1716.35	-1.13	-3.10	-17.24	40°05'17.759"N	104°40'27.378"W	2.00	
1810.75	8.215	259.800	1809.34	-1.90	-5.21	-28.93	40°05'17.739"N	104°40'27.528"W	2.00	End of Build (J)
1817.00†	8.215	259.800	1815.53	-1.95	-5.36	-29.81	40°05'17.737"N	104°40'27.540"W	0.00	
1917.00†	8.215	259.800	1914.50	-2.88	-7.89	-43.87	40°05'17.712"N	104°40'27.720"W	0.00	
2017.00†	8.215	259.800	2013.48	-3.80	-10.42	-57.94	40°05'17.687"N	104°40'27.901"W	0.00	
2117.00†	8.215	259.800	2112.45	-4.72	-12.95	-72.00	40°05'17.662"N	104°40'28.082"W	0.00	
2217.00†	8.215	259.800	2211.43	-5.64	-15.49	-86.06	40°05'17.637"N	104°40'28.263"W	0.00	
2317.00†	8.215	259.800	2310.40	-6.56	-18.02	-100.13	40°05'17.612"N	104°40'28.444"W	0.00	
2417.00†	8.215	259.800	2409.37	-7.48	-20.55	-114.19	40°05'17.587"N	104°40'28.625"W	0.00	
2517.00†	8.215	259.800	2508.35	-8.41	-23.08	-128.25	40°05'17.562"N	104°40'28.806"W	0.00	
2617.00†	8.215	259.800	2607.32	-9.33	-25.61	-142.31	40°05'17.537"N	104°40'28.987"W	0.00	
2717.00†	8.215	259.800	2706.29	-10.25	-28.14	-156.38	40°05'17.512"N	104°40'29.168"W	0.00	
2817.00†	8.215	259.800	2805.27	-11.17	-30.67	-170.44	40°05'17.487"N	104°40'29.349"W	0.00	
2917.00†	8.215	259.800	2904.24	-12.09	-33.20	-184.50	40°05'17.462"N	104°40'29.530"W	0.00	
3017.00†	8.215	259.800	3003.22	-13.01	-35.73	-198.57	40°05'17.437"N	104°40'29.711"W	0.00	
3117.00†	8.215	259.800	3102.19	-13.94	-38.26	-212.63	40°05'17.412"N	104°40'29.892"W	0.00	
3217.00†	8.215	259.800	3201.16	-14.86	-40.79	-226.69	40°05'17.387"N	104°40'30.073"W	0.00	
3317.00†	8.215	259.800	3300.14	-15.78	-43.32	-240.76	40°05'17.362"N	104°40'30.254"W	0.00	
3417.00†	8.215	259.800	3399.11	-16.70	-45.85	-254.82	40°05'17.337"N	104°40'30.435"W	0.00	
3517.00†	8.215	259.800	3498.09	-17.62	-48.38	-268.88	40°05'17.312"N	104°40'30.615"W	0.00	
3617.00†	8.215	259.800	3597.06	-18.54	-50.91	-282.94	40°05'17.287"N	104°40'30.796"W	0.00	
3717.00†	8.215	259.800	3696.03	-19.46	-53.44	-297.01	40°05'17.262"N	104°40'30.977"W	0.00	
3817.00†	8.215	259.800	3795.01	-20.39	-55.97	-311.07	40°05'17.237"N	104°40'31.158"W	0.00	
3917.00†	8.215	259.800	3893.98	-21.31	-58.50	-325.13	40°05'17.212"N	104°40'31.339"W	0.00	
4017.00†	8.215	259.800	3992.96	-22.23	-61.03	-339.20	40°05'17.187"N	104°40'31.520"W	0.00	



Planned Wellpath Report

GITTLEIN 30C-28HZ (PERMIT) PWP
Page 3 of 7



REFERENCE WELLPATH IDENTIFICATION

Operator	KERR-MCGEE OIL & GAS ONSHORE LP	Slot	SLOT#01 GITTLEIN 30C-28HZ (175'FSL & 1138'FWL, SEC.33)
Area	COLORADO	Well	GITTLEIN 30C-28HZ
Field	WELD COUNTY (KERR MCGEE)	Wellbore	GITTLEIN 30C-28HZ PWB
Facility	SEC.33-T2N-R6SW		

WELLPATH DATA (159 stations) † = interpolated/extrapolated station

MD [ft]	Inclination [°]	Azimuth [°]	TVD [ft]	Vert Sect [ft]	North [ft]	East [ft]	Latitude	Longitude	DLS [°/100ft]	Comments
4117.00†	8.215	259.800	4091.93	-23.15	-63.56	-353.26	40°05'17.162"N	104°40'31.701"W	0.00	
4217.00†	8.215	259.800	4190.90	-24.07	-66.09	-367.32	40°05'17.137"N	104°40'31.882"W	0.00	
4317.00†	8.215	259.800	4289.88	-24.99	-68.62	-381.38	40°05'17.112"N	104°40'32.063"W	0.00	
4417.00†	8.215	259.800	4388.85	-25.92	-71.15	-395.45	40°05'17.087"N	104°40'32.244"W	0.00	
4517.00†	8.215	259.800	4487.82	-26.84	-73.68	-409.51	40°05'17.062"N	104°40'32.425"W	0.00	
4617.00†	8.215	259.800	4586.80	-27.76	-76.21	-423.57	40°05'17.037"N	104°40'32.606"W	0.00	
4717.00†	8.215	259.800	4685.77	-28.68	-78.74	-437.64	40°05'17.012"N	104°40'32.787"W	0.00	
4817.00†	8.215	259.800	4784.75	-29.60	-81.27	-451.70	40°05'16.987"N	104°40'32.968"W	0.00	
4917.00†	8.215	259.800	4883.72	-30.52	-83.80	-465.76	40°05'16.962"N	104°40'33.149"W	0.00	
4982.96†	8.215	259.800	4949.00	-31.13	-85.47	-475.04	40°05'16.945"N	104°40'33.268"W	0.00	SUSSEX
5017.00†	8.215	259.800	4982.69	-31.45	-86.33	-479.83	40°05'16.937"N	104°40'33.330"W	0.00	
5117.00†	8.215	259.800	5081.67	-32.37	-88.86	-493.89	40°05'16.912"N	104°40'33.510"W	0.00	
5217.00†	8.215	259.800	5180.64	-33.29	-91.39	-507.95	40°05'16.887"N	104°40'33.691"W	0.00	
5317.00†	8.215	259.800	5279.62	-34.21	-93.93	-522.01	40°05'16.862"N	104°40'33.872"W	0.00	
5417.00†	8.215	259.800	5378.59	-35.13	-96.46	-536.08	40°05'16.837"N	104°40'34.053"W	0.00	
5517.00†	8.215	259.800	5477.56	-36.05	-98.99	-550.14	40°05'16.812"N	104°40'34.234"W	0.00	
5617.00†	8.215	259.800	5576.54	-36.98	-101.52	-564.20	40°05'16.787"N	104°40'34.415"W	0.00	
5717.00†	8.215	259.800	5675.51	-37.90	-104.05	-578.27	40°05'16.762"N	104°40'34.596"W	0.00	
5817.00†	8.215	259.800	5774.49	-38.82	-106.58	-592.33	40°05'16.737"N	104°40'34.777"W	0.00	
5917.00†	8.215	259.800	5873.46	-39.74	-109.11	-606.39	40°05'16.712"N	104°40'34.958"W	0.00	
6017.00†	8.215	259.800	5972.43	-40.66	-111.64	-620.46	40°05'16.687"N	104°40'35.139"W	0.00	
6117.00†	8.215	259.800	6071.41	-41.58	-114.17	-634.52	40°05'16.662"N	104°40'35.320"W	0.00	
6217.00†	8.215	259.800	6170.38	-42.51	-116.70	-648.58	40°05'16.637"N	104°40'35.501"W	0.00	
6317.00†	8.215	259.800	6269.35	-43.43	-119.23	-662.64	40°05'16.612"N	104°40'35.682"W	0.00	
6417.00†	8.215	259.800	6368.33	-44.35	-121.76	-676.71	40°05'16.587"N	104°40'35.863"W	0.00	
6517.00†	8.215	259.800	6467.30	-45.27	-124.29	-690.77	40°05'16.562"N	104°40'36.044"W	0.00	
6617.00†	8.215	259.800	6566.28	-46.19	-126.82	-704.83	40°05'16.537"N	104°40'36.224"W	0.00	
6717.00†	8.215	259.800	6665.25	-47.11	-129.35	-718.90	40°05'16.512"N	104°40'36.405"W	0.00	
6754.77	8.215	259.800	6702.63	-47.46	-130.31	-724.21	40°05'16.502"N	104°40'36.474"W	0.00	End of Tangent (J)
6817.00†	9.398	300.634	6764.19	-44.68	-128.50	-732.96	40°05'16.520"N	104°40'36.586"W	10.00	
6917.00†	16.822	331.778	6861.62	-26.26	-111.55	-746.87	40°05'16.688"N	104°40'36.765"W	10.00	
6987.67†	23.245	340.499	6928.00	-3.14	-89.36	-756.37	40°05'16.907"N	104°40'36.888"W	10.00	SHARON SPRINGS
7017.00†	26.004	342.885	6954.66	8.82	-77.76	-760.20	40°05'17.021"N	104°40'36.937"W	10.00	
7019.61†	26.252	343.074	6957.00	9.95	-76.66	-760.53	40°05'17.032"N	104°40'36.941"W	10.00	NIOBRARA A
7103.02†	34.254	347.778	7029.00	51.52	-36.00	-770.89	40°05'17.434"N	104°40'37.074"W	10.00	NIOBRARA B
7117.00†	35.610	348.378	7040.46	59.49	-28.17	-772.54	40°05'17.512"N	104°40'37.096"W	10.00	
7210.72†	44.754	351.584	7112.00	119.78	31.33	-782.89	40°05'18.099"N	104°40'37.229"W	10.00	NIOBRARA C
7217.00†	45.369	351.760	7116.43	124.22	35.72	-783.54	40°05'18.143"N	104°40'37.237"W	10.00	
7317.00†	55.199	354.157	7180.26	201.03	111.98	-792.84	40°05'18.896"N	104°40'37.357"W	10.00	
7417.00†	65.065	356.038	7230.00	287.60	198.27	-800.17	40°05'19.749"N	104°40'37.451"W	10.00	
7485.03†	71.790	357.147	7255.00	350.73	261.38	-803.91	40°05'20.373"N	104°40'37.499"W	10.00	FORT HAYS
7517.00†	74.952	357.637	7264.15	381.29	291.98	-805.31	40°05'20.675"N	104°40'37.517"W	10.00	
7600.94†	83.259	358.865	7280.00	463.36	374.30	-807.81	40°05'21.489"N	104°40'37.550"W	10.00	CODELL
7617.00†	84.849	359.093	7281.66	479.26	390.27	-808.09	40°05'21.647"N	104°40'37.553"W	10.00	
7669.03	90.000	359.828	7284.00	530.94	442.22	-808.58	40°05'22.160"N	104°40'37.560"W	10.00	End of 3D Arc



Planned Wellpath Report

GITTLEIN 30C-28HZ (PERMIT) PWP

Page 4 of 7



REFERENCE WELLPATH IDENTIFICATION

Operator	KERR-MCGEE OIL & GAS ONSHORE LP	Slot	SLOT#01 GITTLEIN 30C-28HZ (175'FSL & 1138'FWL, SEC.33)
Area	COLORADO	Well	GITTLEIN 30C-28HZ
Field	WELD COUNTY (KERR MCGEE)	Wellbore	GITTLEIN 30C-28HZ PWB
Facility	SEC.33-T2N-R65W		

WELLPATH DATA (159 stations) † = interpolated/extrapolated station

MD [ft]	Inclination [°]	Azimuth [°]	TVD [ft]	Vert Sect [ft]	North [ft]	East [ft]	Latitude	Longitude	DLS [°/100ft]	Comments
7717.00†	90.000	359.828	7284.00	578.62	490.20	-808.72	40°05'22.634"N	104°40'37.561"W	0.00	
7817.00†	90.000	359.828	7284.00	678.01	590.20	-809.02	40°05'23.622"N	104°40'37.565"W	0.00	
7917.00†	90.000	359.828	7284.00	777.40	690.20	-809.33	40°05'24.611"N	104°40'37.569"W	0.00	
8017.00†	90.000	359.828	7284.00	876.79	790.20	-809.63	40°05'25.599"N	104°40'37.573"W	0.00	
8117.00†	90.000	359.828	7284.00	976.18	890.19	-809.93	40°05'26.587"N	104°40'37.577"W	0.00	
8217.00†	90.000	359.828	7284.00	1075.57	990.19	-810.23	40°05'27.575"N	104°40'37.581"W	0.00	
8317.00†	90.000	359.828	7284.00	1174.96	1090.19	-810.53	40°05'28.563"N	104°40'37.585"W	0.00	
8417.00†	90.000	359.828	7284.00	1274.35	1190.19	-810.83	40°05'29.552"N	104°40'37.589"W	0.00	
8517.00†	90.000	359.828	7284.00	1373.74	1290.19	-811.13	40°05'30.540"N	104°40'37.593"W	0.00	
8617.00†	90.000	359.828	7284.00	1473.13	1390.19	-811.43	40°05'31.528"N	104°40'37.597"W	0.00	
8717.00†	90.000	359.828	7284.00	1572.52	1490.19	-811.73	40°05'32.516"N	104°40'37.601"W	0.00	
8817.00†	90.000	359.828	7284.00	1671.91	1590.19	-812.03	40°05'33.504"N	104°40'37.604"W	0.00	
8917.00†	90.000	359.828	7284.00	1771.30	1690.19	-812.33	40°05'34.493"N	104°40'37.608"W	0.00	
9017.00†	90.000	359.828	7284.00	1870.69	1790.19	-812.63	40°05'35.481"N	104°40'37.612"W	0.00	
9117.00†	90.000	359.828	7284.00	1970.08	1890.19	-812.93	40°05'36.469"N	104°40'37.616"W	0.00	
9217.00†	90.000	359.828	7284.00	2069.48	1990.19	-813.23	40°05'37.457"N	104°40'37.620"W	0.00	
9317.00†	90.000	359.828	7284.00	2168.87	2090.19	-813.53	40°05'38.445"N	104°40'37.624"W	0.00	
9417.00†	90.000	359.828	7284.00	2268.26	2190.19	-813.83	40°05'39.434"N	104°40'37.628"W	0.00	
9517.00†	90.000	359.828	7284.00	2367.65	2290.19	-814.13	40°05'40.422"N	104°40'37.632"W	0.00	
9617.00†	90.000	359.828	7284.00	2467.04	2390.19	-814.43	40°05'41.410"N	104°40'37.636"W	0.00	
9717.00†	90.000	359.828	7284.00	2566.43	2490.19	-814.73	40°05'42.398"N	104°40'37.640"W	0.00	
9817.00†	90.000	359.828	7284.00	2665.82	2590.19	-815.03	40°05'43.387"N	104°40'37.643"W	0.00	
9917.00†	90.000	359.828	7284.00	2765.21	2690.19	-815.33	40°05'44.375"N	104°40'37.647"W	0.00	
10017.00†	90.000	359.828	7284.00	2864.60	2790.19	-815.63	40°05'45.363"N	104°40'37.651"W	0.00	
10117.00†	90.000	359.828	7284.00	2963.99	2890.19	-815.93	40°05'46.351"N	104°40'37.655"W	0.00	
10217.00†	90.000	359.828	7284.00	3063.38	2990.19	-816.23	40°05'47.339"N	104°40'37.659"W	0.00	
10317.00†	90.000	359.828	7284.00	3162.77	3090.18	-816.53	40°05'48.328"N	104°40'37.663"W	0.00	
10417.00†	90.000	359.828	7284.00	3262.16	3190.18	-816.83	40°05'49.316"N	104°40'37.667"W	0.00	
10517.00†	90.000	359.828	7284.00	3361.55	3290.18	-817.13	40°05'50.304"N	104°40'37.671"W	0.00	
10617.00†	90.000	359.828	7284.00	3460.94	3390.18	-817.43	40°05'51.292"N	104°40'37.675"W	0.00	
10717.00†	90.000	359.828	7284.00	3560.33	3490.18	-817.73	40°05'52.280"N	104°40'37.679"W	0.00	
10817.00†	90.000	359.828	7284.00	3659.72	3590.18	-818.03	40°05'53.269"N	104°40'37.683"W	0.00	
10917.00†	90.000	359.828	7284.00	3759.11	3690.18	-818.33	40°05'54.257"N	104°40'37.686"W	0.00	
11017.00†	90.000	359.828	7284.00	3858.50	3790.18	-818.63	40°05'55.245"N	104°40'37.690"W	0.00	
11117.00†	90.000	359.828	7284.00	3957.89	3890.18	-818.93	40°05'56.233"N	104°40'37.694"W	0.00	
11217.00†	90.000	359.828	7284.00	4057.28	3990.18	-819.23	40°05'57.221"N	104°40'37.698"W	0.00	
11317.00†	90.000	359.828	7284.00	4156.67	4090.18	-819.53	40°05'58.210"N	104°40'37.702"W	0.00	
11417.00†	90.000	359.828	7284.00	4256.06	4190.18	-819.83	40°05'59.198"N	104°40'37.706"W	0.00	
11517.00†	90.000	359.828	7284.00	4355.45	4290.18	-820.13	40°06'00.186"N	104°40'37.710"W	0.00	
11617.00†	90.000	359.828	7284.00	4454.84	4390.18	-820.43	40°06'01.174"N	104°40'37.714"W	0.00	
11717.00†	90.000	359.828	7284.00	4554.23	4490.18	-820.73	40°06'02.163"N	104°40'37.718"W	0.00	
11817.00†	90.000	359.828	7284.00	4653.62	4590.18	-821.03	40°06'03.151"N	104°40'37.721"W	0.00	
11917.00†	90.000	359.828	7284.00	4753.01	4690.18	-821.33	40°06'04.139"N	104°40'37.725"W	0.00	
12017.00†	90.000	359.828	7284.00	4852.40	4790.18	-821.63	40°06'05.127"N	104°40'37.729"W	0.00	
12117.00†	90.000	359.828	7284.00	4951.80	4890.18	-821.93	40°06'06.115"N	104°40'37.733"W	0.00	



Planned Wellpath Report

GITTLEIN 30C-28HZ (PERMIT) PWP

Page 5 of 7



REFERENCE WELLPATH IDENTIFICATION

Operator	KERR-MCGEE OIL & GAS ONSHORE LP	Slot	SLOT#01 GITTLEIN 30C-28HZ (175'FSL & 1138'FWL, SEC.33)
Area	COLORADO	Well	GITTLEIN 30C-28HZ
Field	WELD COUNTY (KERR MCGEE)	Wellbore	GITTLEIN 30C-28HZ PWB
Facility	SEC.33-T2N-R65W		

WELLPATH DATA (159 stations) † = interpolated/extrapolated station

MD [ft]	Inclination [°]	Azimuth [°]	TVD [ft]	Vert Sect [ft]	North [ft]	East [ft]	Latitude	Longitude	DLS [°/100ft]	Comments
12217.00†	90.000	359.828	7284.00	5051.19	4990.18	-822.23	40°06'07.104"N	104°40'37.737"W	0.00	
12317.00†	90.000	359.828	7284.00	5150.58	5090.18	-822.53	40°06'08.092"N	104°40'37.741"W	0.00	
12417.00†	90.000	359.828	7284.00	5249.97	5190.18	-822.83	40°06'09.080"N	104°40'37.745"W	0.00	
12517.00†	90.000	359.828	7284.00	5349.36	5290.18	-823.13	40°06'10.068"N	104°40'37.749"W	0.00	
12617.00†	90.000	359.828	7284.00	5448.75	5390.17	-823.42	40°06'11.056"N	104°40'37.753"W	0.00	
12717.00†	90.000	359.829	7284.00	5548.14	5490.17	-823.72	40°06'12.045"N	104°40'37.757"W	0.00	
12817.00†	90.000	359.829	7284.00	5647.53	5590.17	-824.02	40°06'13.033"N	104°40'37.760"W	0.00	
12917.00†	90.000	359.829	7284.00	5746.92	5690.17	-824.32	40°06'14.021"N	104°40'37.764"W	0.00	
13017.00†	90.000	359.829	7284.00	5846.31	5790.17	-824.62	40°06'15.009"N	104°40'37.768"W	0.00	
13117.00†	90.000	359.829	7284.00	5945.70	5890.17	-824.92	40°06'15.997"N	104°40'37.772"W	0.00	
13217.00†	90.000	359.829	7284.00	6045.09	5990.17	-825.22	40°06'16.986"N	104°40'37.776"W	0.00	
13317.00†	90.000	359.829	7284.00	6144.48	6090.17	-825.52	40°06'17.974"N	104°40'37.780"W	0.00	
13417.00†	90.000	359.829	7284.00	6243.87	6190.17	-825.82	40°06'18.962"N	104°40'37.784"W	0.00	
13517.00†	90.000	359.829	7284.00	6343.26	6290.17	-826.12	40°06'19.950"N	104°40'37.788"W	0.00	
13617.00†	90.000	359.829	7284.00	6442.65	6390.17	-826.42	40°06'20.939"N	104°40'37.792"W	0.00	
13717.00†	90.000	359.829	7284.00	6542.04	6490.17	-826.72	40°06'21.927"N	104°40'37.795"W	0.00	
13817.00†	90.000	359.829	7284.00	6641.43	6590.17	-827.01	40°06'22.915"N	104°40'37.799"W	0.00	
13917.00†	90.000	359.829	7284.00	6740.82	6690.17	-827.31	40°06'23.903"N	104°40'37.803"W	0.00	
14017.00†	90.000	359.829	7284.00	6840.21	6790.17	-827.61	40°06'24.891"N	104°40'37.807"W	0.00	
14117.00†	90.000	359.829	7284.00	6939.60	6890.17	-827.91	40°06'25.880"N	104°40'37.811"W	0.00	
14217.00†	90.000	359.829	7284.00	7038.99	6990.17	-828.21	40°06'26.868"N	104°40'37.815"W	0.00	
14317.00†	90.000	359.829	7284.00	7138.38	7090.17	-828.51	40°06'27.856"N	104°40'37.819"W	0.00	
14417.00†	90.000	359.829	7284.00	7237.77	7190.17	-828.81	40°06'28.844"N	104°40'37.823"W	0.00	
14501.37	90.000	359.829	7284.00 ¹	7321.63	7274.54	-829.06	40°06'29.678"N	104°40'37.826"W	0.00	End of 3D Arc

HOLE & CASING SECTIONS - Ref Wellbore: GITTLEIN 30C-28HZ PWB Ref Wellpath: GITTLEIN 30C-28HZ (PERMIT) PWP

String/Diameter	Start MD [ft]	End MD [ft]	Interval [ft]	Start TVD [ft]	End TVD [ft]	Start N/S [ft]	Start E/W [ft]	End N/S [ft]	End E/W [ft]
12.25in Open Hole	17.00	1300.00	1283.00	17.00	1300.00	0.00	0.00	0.00	0.00
9.625in Casing Surface	17.00	1300.00	1283.00	17.00	1300.00	0.00	0.00	0.00	0.00
8.75in Open Hole	17.00	7669.03	7652.03	17.00	7284.00	0.00	0.00	442.23	-808.58
7in Casing Intermediate	17.00	7669.03	7652.03	17.00	7284.00	0.00	0.00	442.23	-808.58
6.125in Open Hole	7669.03	14501.37	6832.34	7284.00	7284.00	442.23	-808.58	7274.54	-829.06
4.5in Casing Production	17.00	14501.37	14484.37	17.00	7284.00	0.00	0.00	7274.54	-829.06



Planned Wellpath Report

GITTLEIN 30C-28HZ (PERMIT) PWP

Page 6 of 7

**REFERENCE WELLPATH IDENTIFICATION**

Operator	KERR-MCGEE OIL & GAS ONSHORE LP	Slot	SLOT#01 GITTLEIN 30C-28HZ (175'FSL & 1138'FWL, SEC.33)
Area	COLORADO	Well	GITTLEIN 30C-28HZ
Field	WELD COUNTY (KERR MCGEE)	Wellbore	GITTLEIN 30C-28HZ PWB
Facility	SEC.33-T2N-R65W		

TARGETS

Name	MD [ft]	TVD [ft]	North [ft]	East [ft]	Grid East [US ft]	Grid North [US ft]	Latitude	Longitude	Shape
GITTLEIN 4 PAD SECTION 28 LINES		0.00	0.00	0.00	3231045.24	1276079.08	40°05'17.790"N	104°40'27.156"W	polygon
GITTLEIN 4 PAD SECTION 33 LINES		0.00	0.00	0.00	3231045.24	1276079.08	40°05'17.790"N	104°40'27.156"W	polygon
1) GITTLEIN 30C-28HZ BHL ON PLAT (2188'FSL & 330'FWL, SEC.28) REV-1	14501.37	7284.00	7274.54	-829.06	3230148.50	1283345.28	40°06'29.678"N	104°40'37.826"W	point
GITTLEIN 4 PAD SEC. 28 HARDLINES (460'SETBACKS)		7300.00	0.00	0.00	3231045.24	1276079.08	40°05'17.790"N	104°40'27.156"W	polygon
GITTLEIN 4 PAD SEC. 33 HARDLINES (460'SETBACKS)		7300.00	0.00	0.00	3231045.24	1276079.08	40°05'17.790"N	104°40'27.156"W	polygon

SURVEY PROGRAM - Ref Wellbore: GITTLEIN 30C-28HZ PWB Ref Wellpath: GITTLEIN 30C-28HZ (PERMIT) PWP

Start MD [ft]	End MD [ft]	Positional Uncertainty Model	Log Name/Comment	Wellbore
17.00	7669.03	NaviTrak (Standard)		GITTLEIN 30C-28HZ PWB
7669.03	14501.37	OnTrak (Standard)		GITTLEIN 30C-28HZ PWB



Planned Wellpath Report
GITTLEIN 30C-28HZ (PERMIT) PWP
Page 7 of 7



REFERENCE WELLPATH IDENTIFICATION			
Operator	KERR-MCGEE OIL & GAS ONSHORE LP	Slot	SLOT#01 GITTLEIN 30C-28HZ (175'FSL & 1138'FWL, SEC.33)
Area	COLORADO	Well	GITTLEIN 30C-28HZ
Field	WELD COUNTY (KERR MCGEE)	Wellbore	GITTLEIN 30C-28HZ PWB
Facility	SEC.33-T2N-R65W		

WELLPATH COMMENTS				
MD [ft]	Inclination [°]	Azimuth [°]	TVD [ft]	Comment
756.00	0.000	259.800	756.00	FOX HILLS
4982.96	8.215	259.800	4949.00	SUSSEX
6987.67	23.245	340.499	6928.00	SHARON SPRINGS
7019.61	26.252	343.074	6957.00	NIOBRARA A
7103.02	34.254	347.778	7029.00	NIOBRARA B
7210.72	44.754	351.584	7112.00	NIOBRARA C
7485.03	71.790	357.147	7255.00	FORT HAYS
7600.94	83.259	358.865	7280.00	CODELL