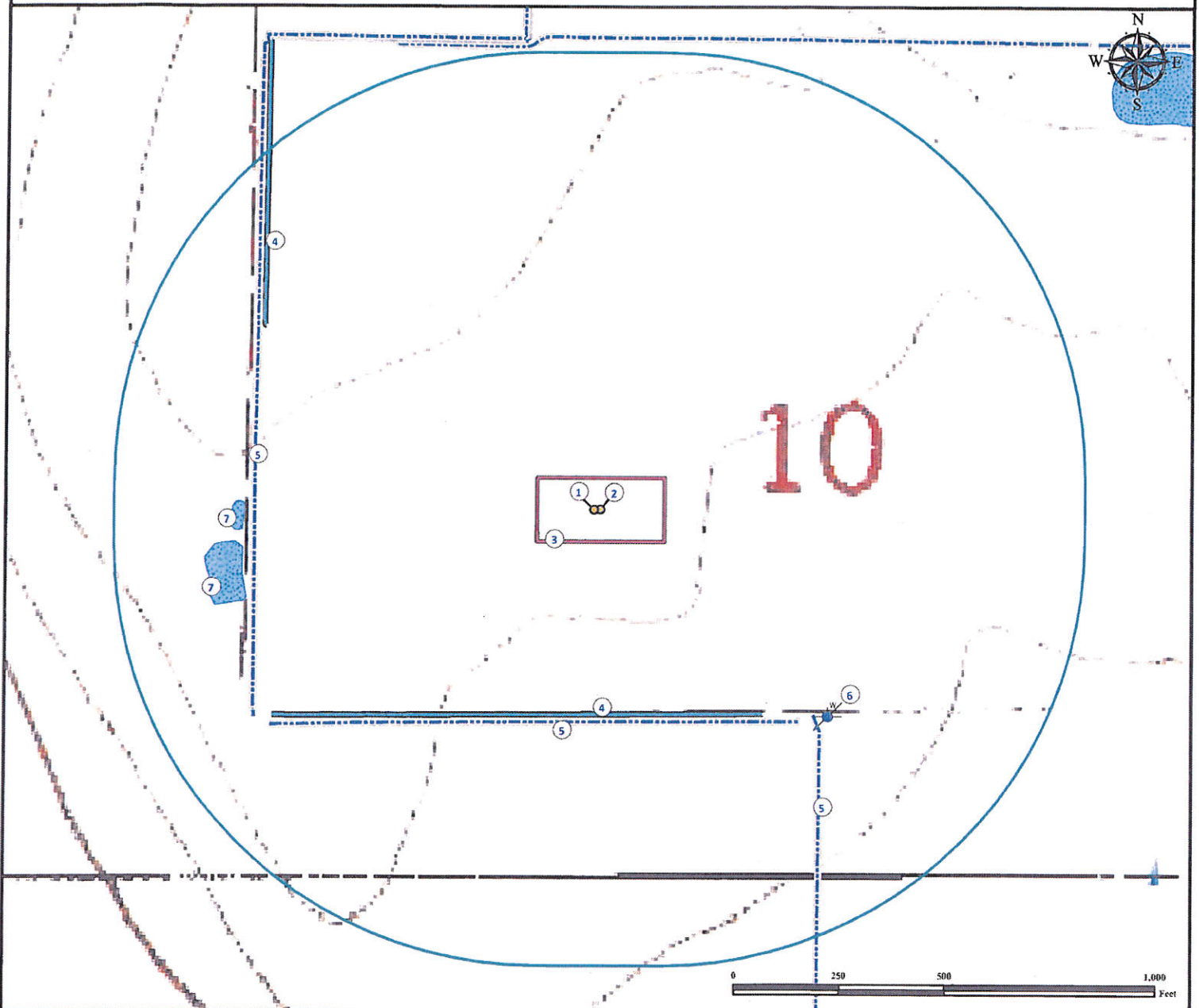


# Hydrology Map

## KAISER 6-10

SE¼ NW¼ SECTION 10, TOWNSHIP 6 NORTH, RANGE 65 WEST OF THE 6TH PRINCIPAL MERIDIAN



- |                                  |   |   |
|----------------------------------|---|---|
| 1. Proposed Well KAISER 921-10.  | 4. Ditches are $\pm 901'$ NW and $\pm 482'$ S.                        | 7. Irrigation Ponds are $\pm 855'$ SW and $\pm 840'$ W. |
| 2. Proposed Well KAISER 25-10.   | 5. Concrete Ditches are $\pm 500'$ S, $\pm 816'$ W and $\pm 700'$ SE. |   |
| 3. Operational Disturbance Area. | 6. Water Well (#602) is $\pm 726'$ SE.                                |   |

### Legend

- |               |                  |                |
|---------------|------------------|----------------|
| Proposed Well | Disturbance Area | Ditch          |
| Water Well    | 1000' Radius     | Concrete Ditch |
|               | Irrigation Pond  |                |

### Reference Location

\*\* All Measurements are Made from Reference Well KAISER 25-10 \*\*

Lat: 40.502383° Long: -104.651299° (NAD83)  
Elevation: 4773 Feet



Use our resources to find yours!  
[www.petro-fs.com](http://www.petro-fs.com)  
(303) 928-7128

Field Date: 07/31/2012  
Drafting Date: 08/14/2012  
Drafter: DMM  
Revision:

Data Sources:  
- TOPO courtesy USGS  
- Water wells courtesy CDOWR

Prepared for:

BAYSWATER  
EXPLORATION AND PRODUCTION, LLC