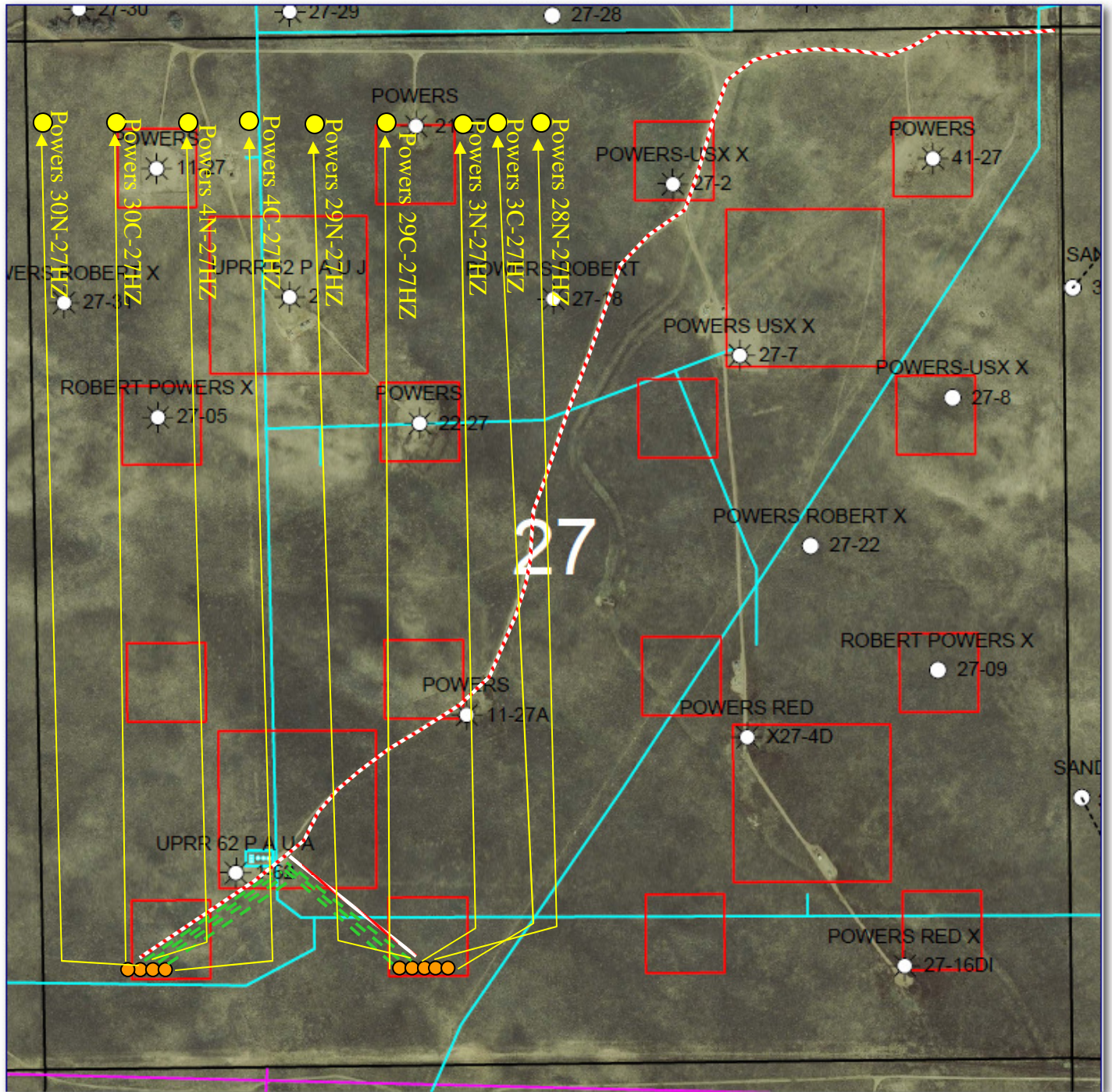


# ACCESS ROAD



This aerial photo and all notations and depictions thereon is provided as a courtesy and is intended to be used for general reference purposes only. Kerr-McGee/Anadarko expressly disclaims any and all representations or warranties regarding the accuracy or the completeness of the information appearing on this aerial photo and any reliance on it for any purpose whatsoever is at the sole risk of the party so relying.



- Access Road
- KMG Gathering Line
- Duke Pipeline
- RGSI Pipeline
- Proposed Flowline
- Legal Drilling Window
- ★ Exist Battery Location
- ★ New Battery Location
- Proposed Wellhead
- Bottomhole Location
- Potential Drill Sites



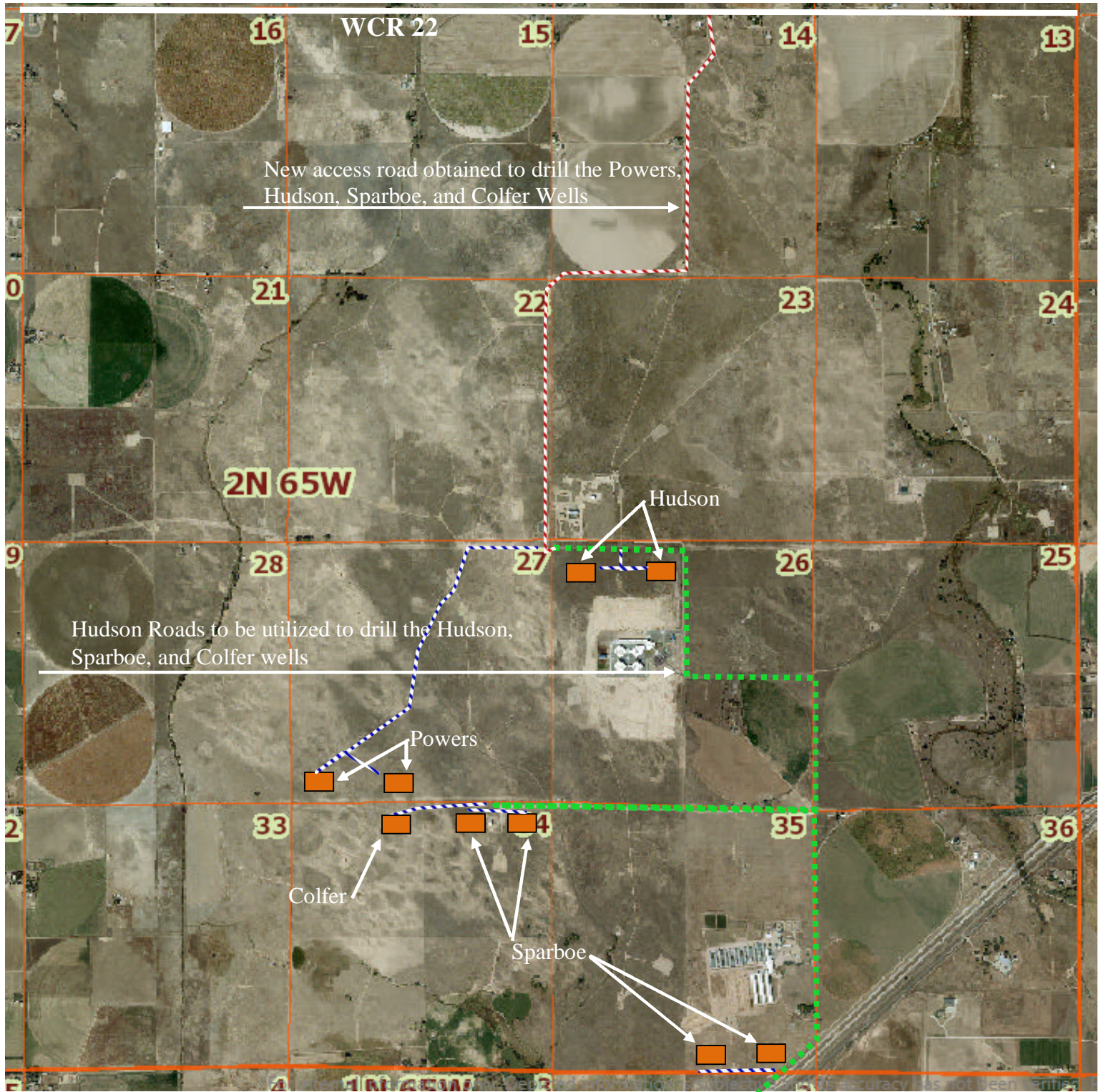
**Aerial Photo**  
**Sec. 27-2N-65W**  
**Weld County, CO**

Author:  
**Teddy Ruampant**

Edited By  
 Dave Haertel:

Last Edited:  
**7/2/2012**





This aerial photo and all notations and depictions thereon is provided as a courtesy and is intended to be used for general reference purposes only. Kerr-McGee/Anadarko expressly disclaims any and all representations or warranties regarding the accuracy or the completeness of the information appearing on this aerial photo and any reliance on it for any purpose whatsoever is at the sole risk of the party so relying.



- Hudson Roads
- Future pipeline easement
- Access Road
- KMG Gathering Line
- Duke Pipeline
- RGS Pipeline
- Proposed Flowline
- Legal Drilling Window
- Exist Battery Location
- New Battery Location
- Proposed Wellhead
- Bottomhole Location
- Potential Drill Sites

----- Lease Roads



**Aerial Photo  
2N65W  
Weld County, CO**

Author:  
**Teddy Ruampant**

Edited By:  
Dave Haertel

Last Edited:  
**10/25/2012**