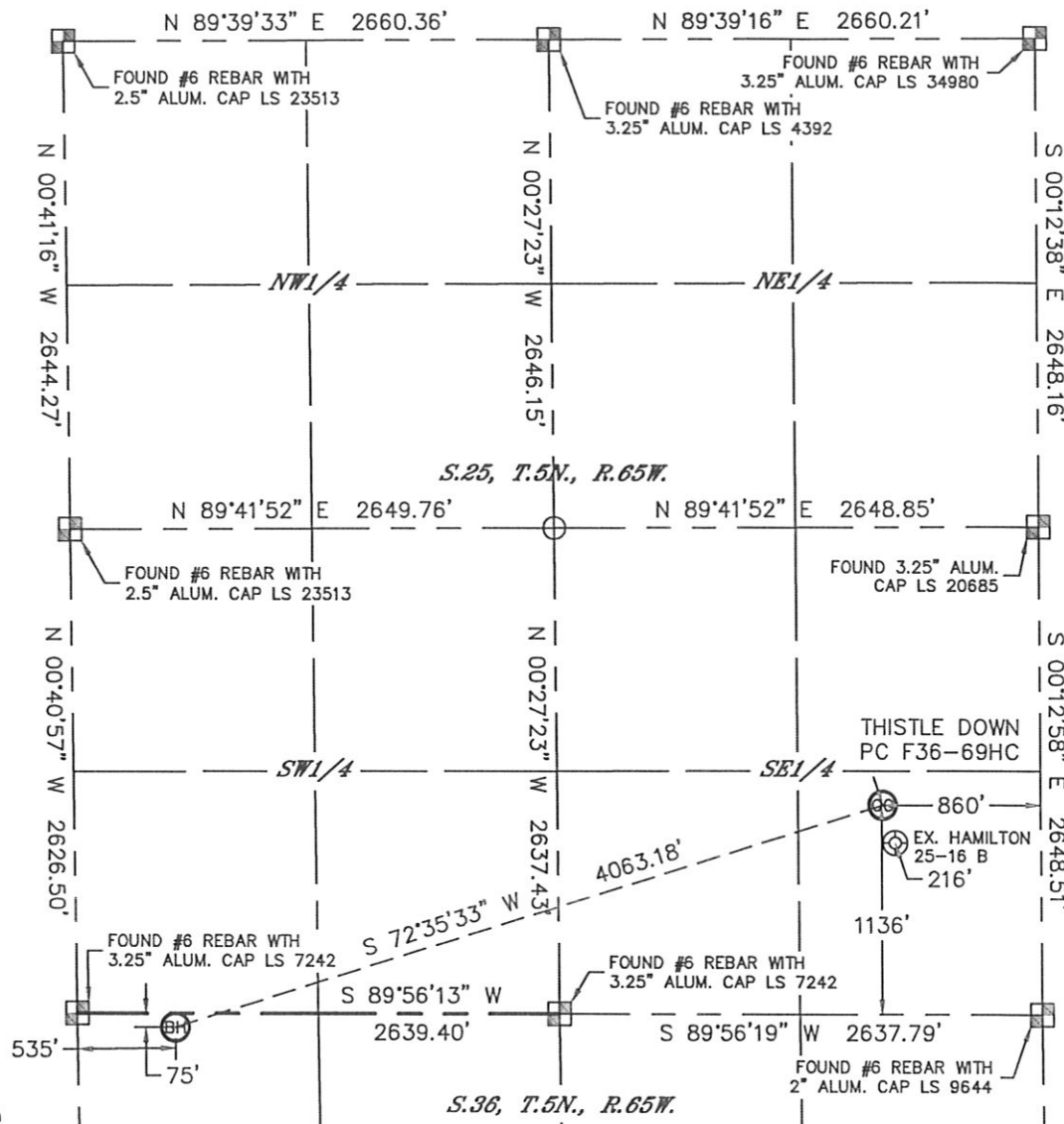


WELL LOCATION CERTIFICATE

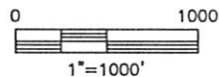
SECTION: 25
TOWNSHIP: 5N
RANGE: 65W

THIS MAP DOES NOT REPRESENT A BOUNDARY SURVEY



In accordance with a request from Jacob Rice with Noble Energy Inc. Lat40°, Inc. has determined the surface location of the THISTLE DOWN PC F36-69HC to be 1136' from the SOUTH line and 860' from the EAST line as measured at right angles from the section lines of Section 25, Township 5 North, Range 65 West and the bottom hole to be 75' from the NORTH line and 535' from the WEST line as measured at right angles from the section lines of Section 36, Township 5 North, Range 65 West of the Sixth Principal Meridian, County of Weld, State of Colorado.

I hereby state that this Well Location Certificate was prepared by me, or under my direct supervision, that the fieldwork was completed on 7/12/12, for and on behalf of Noble Energy Inc. That this is not a Land Survey Plat or an Improvement Survey Plat, and that it is not to be relied upon for establishment of fence, building, or other future improvement lines.



NOTE:

- 1) Bearings shown are Grid Bearings of the Colorado State Plane Coordinate System, North Zone, North American Datum 1983/2007. The lineal dimensions as contained herein are based upon the "U.S. Survey Foot."
- 2) Ground elevations are based on an observed GPS elevation (NAVD 1988 DATUM).
- 3) NEAREST EXISTING WELL: HAMILTON 25-16 B, 216'
- 4) IMPROVEMENTS: See LOCATION DRAWING for all visible improvements within 400' of disturbed area.
- 5) SURFACE USE: CROP FIELD
- 6) INSTRUMENT OPERATOR: ADAM KELLY

SURFACE LOCATION

LAT: 40.36599N
LONG: 104.60511W
PDOP: 1.5
ELEV: 4723'
1/4, 1/4: SE1/4SE1/4
NEAREST PROPERTY LINE: 159' E

BOTTOM HOLE

LAT: 40.36276N
LONG: 104.61906W

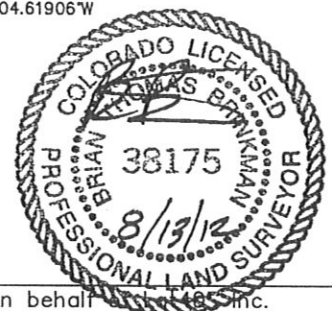
LEGEND

- = ALIQUOT MONUMENT AS DESCRIBED
- = CALCULATED POSITION

SHEET 1 OF 2

Brian T. Brinkman—On behalf of Lat40°, Inc.
Colorado Licensed Professional
Land Surveyor No. 38175

DATE: 8/10/2012
PROJECT#: 2011015



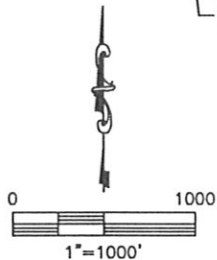
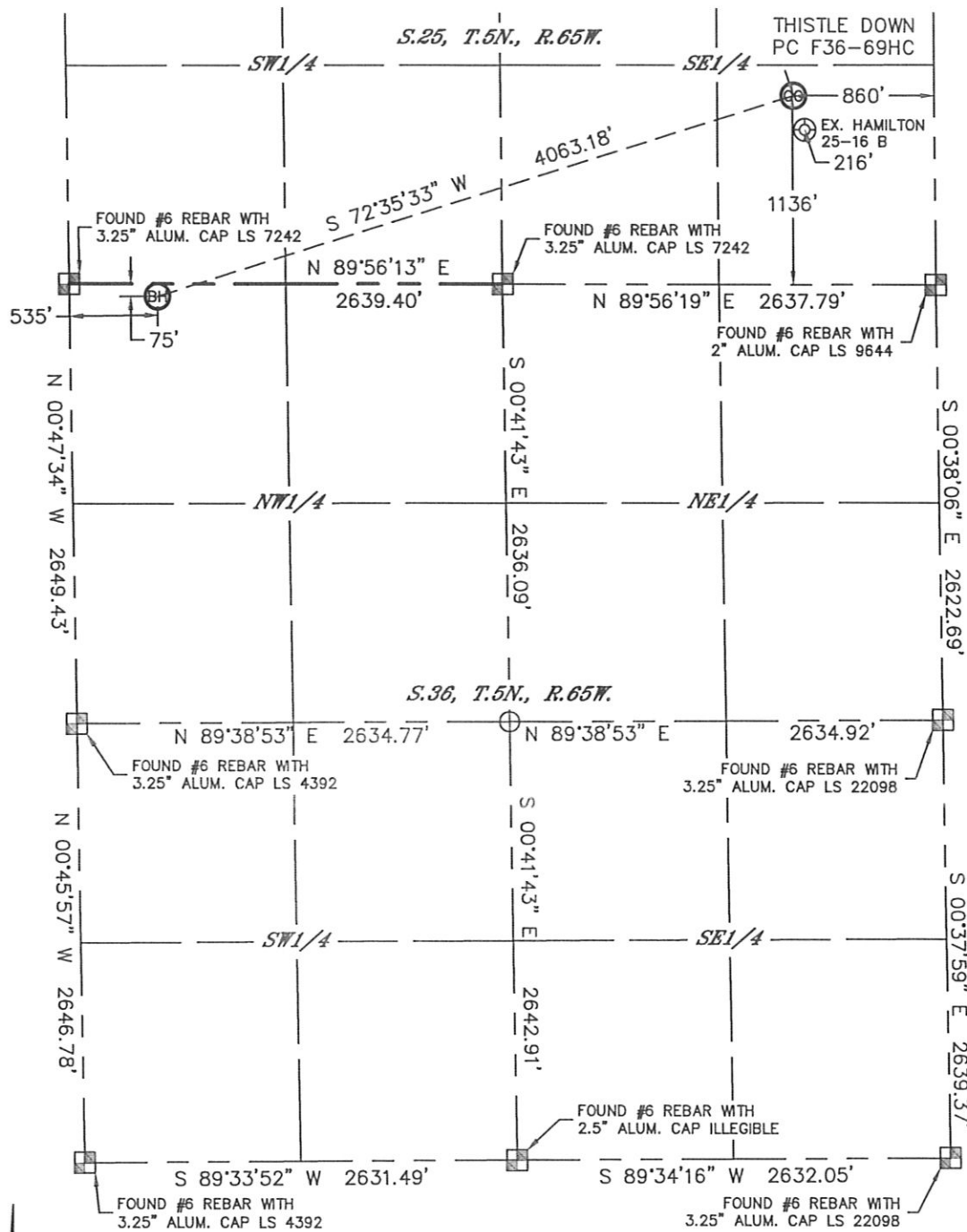
NOTE:

According to Colorado law, you must commence any legal action based upon any defect in this W.L.C. within three years after you discover such defect. In no event, may any action based upon any defect in this survey be commenced more than ten years after the date of the certificate shown hereon, (13-80-105 C.R.S.)

WELL LOCATION CERTIFICATE

THIS MAP DOES NOT REPRESENT A BOUNDARY SURVEY

SECTION: 25
TOWNSHIP: 5N
RANGE: 65W



NOTE
According to Colorado law, you must commence any legal action based upon any defect in this W.L.C. within three years after you discover such defect. In no event, may any action based upon any defect in this survey be commenced more than ten years after the date of the certificate shown hereon. (13-80-105 C.R.S.)

LEGEND

- = ALIQUOT MONUMENT AS DESCRIBED
- = CALCULATED POSITION

SHEET 2 OF 2

Brian T. Brinkman—On behalf of Lat40°, Inc.
Colorado Licensed Professional
Land Surveyor No. 38175

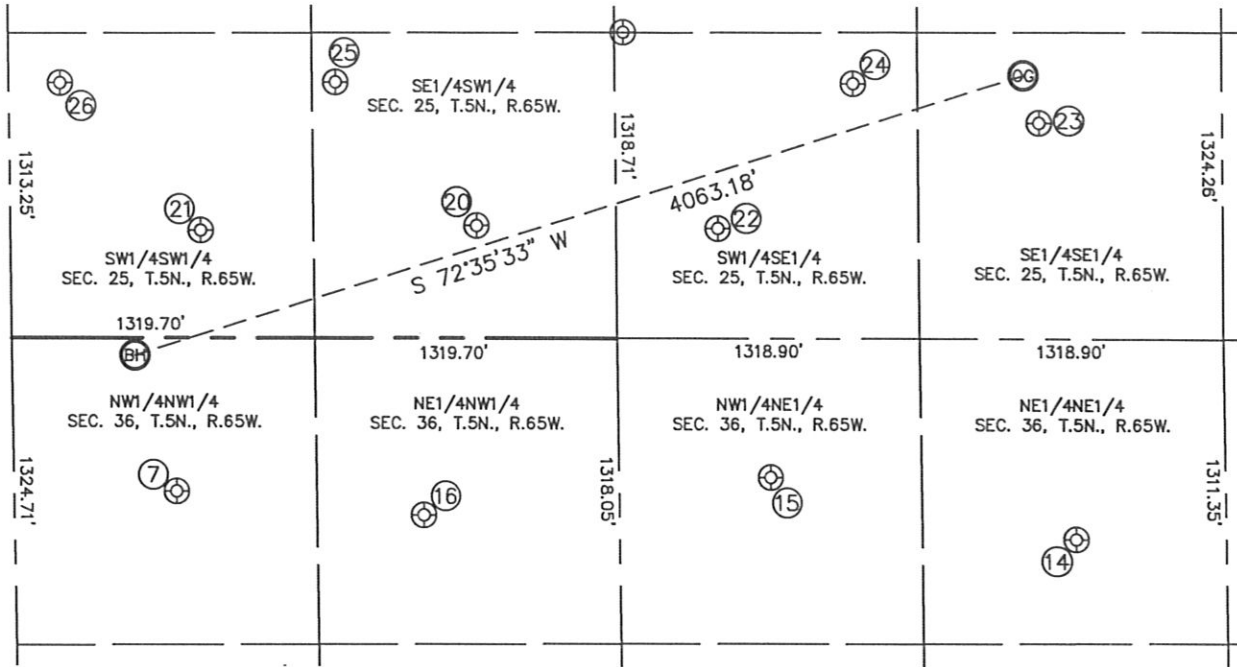
DATE: 8/10/2012
PROJECT#: 2011015



SITE SKETCH

THISTLE DOWN PC F36-69HC

SECTION: 25
TOWNSHIP: 5N
RANGE: 65W



- | | | | |
|--|---|---|--|
| <p>⑦
STATE CLARK 36-22
NW1/4NW1/4
661' FNL
707' FWL
LAT-40.36115°N
LONG-104.61844°W
PDOP: 2.3
ELEV: 4690'</p> | <p>⑭
STATE FARMS 36-11
NE1/4NE1/4
864' FNL
651' FEL
LAT-40.36050°N
LONG-104.60438°W
PDOP: 1.2
ELEV: 4754'</p> | <p>⑮
DOME STATE FARM 36-2
NW1/4NE1/4
598' FNL
1979' FEL
LAT-40.36126°N
LONG-104.60915°W
PDOP: 1.2
ELEV: 4731'</p> | <p>⑯
STATE CLARK 36-21
NE1/4NW1/4
764' FNL
1782' FWL
LAT-40.36084°N
LONG-104.61458°W
PDOP: 1.2
ELEV: 4708'</p> |
| <p>⑳
HAMILTON 25-14B
SE1/4SW1/4
485' FSL
2032' FWL
LAT-40.36426°N
LONG-104.61369°W
PDOP: 1.5
ELEV: 4703'</p> | <p>㉑
HAMILTON 25-13B
SW1/4SW1/4
463' FSL
829' FWL
LAT-40.36423°N
LONG-104.61801°W
PDOP: 1.4
ELEV: 4698'</p> | <p>㉒
HAMILTON 25-15B
SW1/4SE1/4
474' FSL
2199' FEL
LAT-40.36421°N
LONG-104.60993°W
PDOP: 1.4
ELEV: 4710'</p> | <p>㉓
HAMILTON 25-16 B
SE1/4SE1/4
931' FSL
793' FEL
LAT-40.36543°N
LONG-104.60487°W
PDOP: 2.1
ELEV: 4731'</p> |
| <p>㉔
HAMILTON F 25-23
SW1/4SE1/4
1100' FSL
1603' FEL
LAT-40.36591°N
LONG-104.60778°W
PDOP: 1.6
ELEV: 4716'</p> | <p>㉕
HAMILTON F25-25
SE1/4SW1/4
1102' FSL
1424' FWL
LAT-40.36597°N
LONG-104.61588°W
PDOP: 2.3
ELEV: 4690'</p> | <p>㉖
HAMILTON F25-33
SW1/4SW1/4
1099' FSL
225' FWL
LAT-40.36599°N
LONG-104.62018°W
PDOP: 2.2
ELEV: 4670'</p> | |

