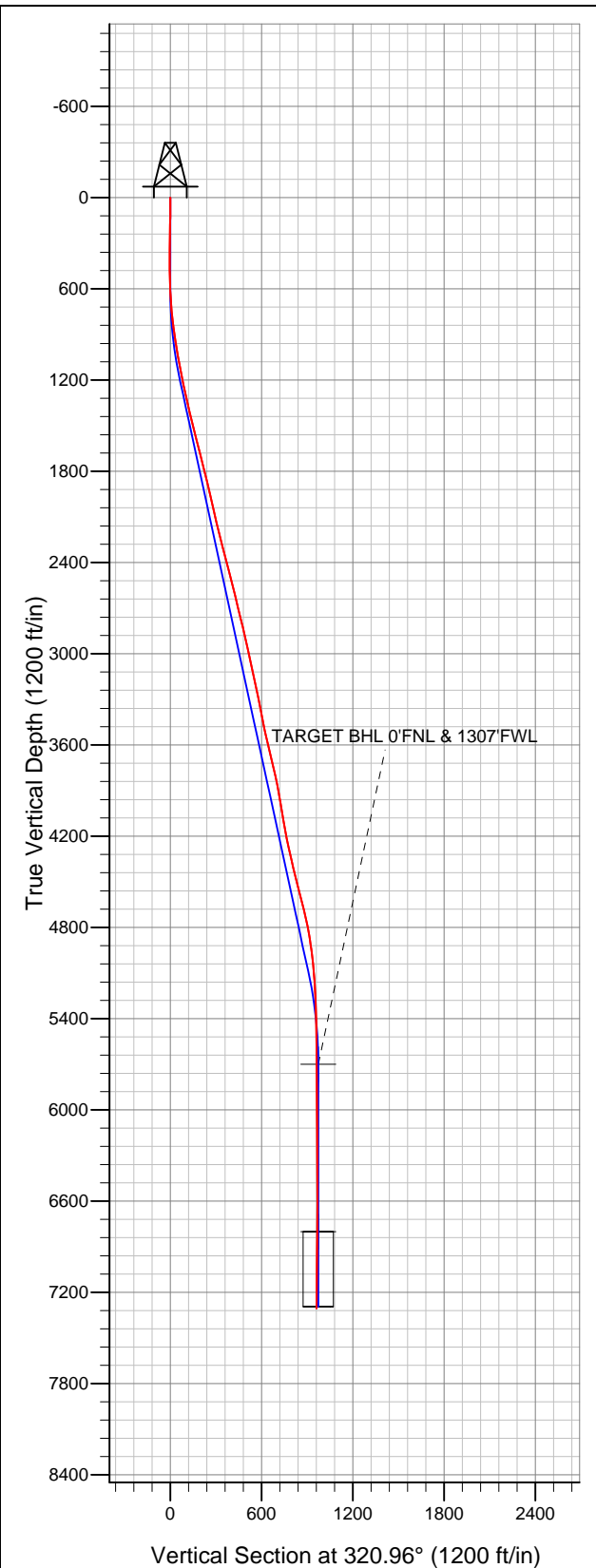


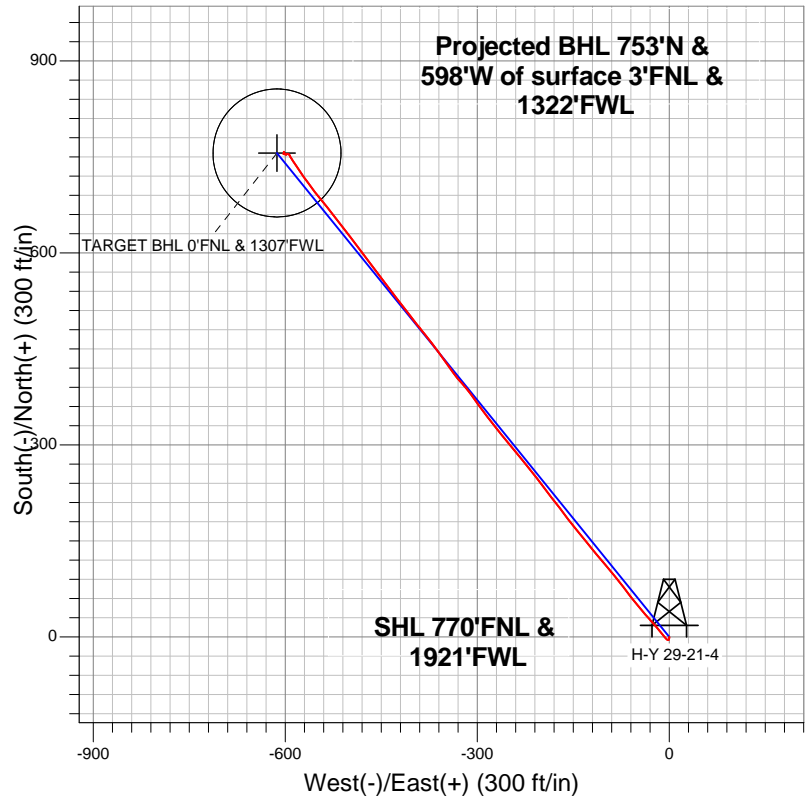
Well Name: H-Y 29-21-4

Surface Location: H-Y (West) Pad Sec.29-T6N-R67W
North American Datum 1983 US State Plane 1983Colorado Northern Zone
Ground Elevation: 4783.0

+N/-S	+E/-W	Northing	Easting	Latitude	Longitude	Slot
0.0	0.0	1412043.84	3161507.70	40.463011	-104.919558	
Original Well Elev			WELL @ 4797.0ft (Original Well Elev)			



Great Western



LEGEND

- Wellbore #1
- H-Y 29-21-4, Wellbore #1, Plan #2 (5-24-12) R V0
- Survey #1

Final Survey Plot

Projected Final Survey -
7410'MD & 7306'TVD @ 962'VS
0.60 deg Inc 116.60 deg AZ

Project: SEC.29-T6N-R67W
Site: H-Y (West) Pad Sec.29-T6N-R67W
Well: H-Y 29-21-4
Plan: Wellbore #1



Great Western

SEC.29-T6N-R67W

H-Y (West) Pad Sec.29-T6N-R67W

H-Y 29-21-4

Wellbore #1

Survey: Survey #1

Standard Survey Report

31 May, 2012

Company:	Great Western	Local Co-ordinate Reference:	Well H-Y 29-21-4
Project:	SEC.29-T6N-R67W	TVD Reference:	WELL @ 4797.0ft (Original Well Elev)
Site:	H-Y (West) Pad Sec.29-T6N-R67W	MD Reference:	WELL @ 4797.0ft (Original Well Elev)
Well:	H-Y 29-21-4	North Reference:	True
Wellbore:	Wellbore #1	Survey Calculation Method:	Minimum Curvature
Design:	Wellbore #1	Database:	Landmark

Project	SEC.29-T6N-R67W, Weld County, CO		
Map System:	US State Plane 1983	System Datum:	Mean Sea Level
Geo Datum:	North American Datum 1983		Using Well Reference Point
Map Zone:	Colorado Northern Zone		Using geodetic scale factor

Site	H-Y (West) Pad Sec.29-T6N-R67W				
Site Position:		Northing:	1,412,089.37 ft	Latitude:	40.463136
From:	Lat/Long	Easting:	3,161,502.67 ft	Longitude:	-104.919575
Position Uncertainty:	0.0 ft	Slot Radius:	"	Grid Convergence:	0.38 °

Well	H-Y 29-21-4					
Well Position	+N/-S	0.0 ft	Northing:	1,412,043.84 ft	Latitude:	40.463011
	+E/-W	0.0 ft	Easting:	3,161,507.70 ft	Longitude:	-104.919558
Position Uncertainty		0.0 ft	Wellhead Elevation:	ft	Ground Level:	4,783.0 ft

Wellbore	Wellbore #1				
Magnetics	Model Name	Sample Date	Declination (°)	Dip Angle (°)	Field Strength (nT)
	IGRF2010	5/24/2012	8.83	67.04	53,049

Design	Wellbore #1				
Audit Notes:					
Version:	1.0	Phase:	ACTUAL	Tie On Depth:	0.0
Vertical Section:	Depth From (TVD) (ft)	+N/-S (ft)	+E/-W (ft)	Direction (°)	
	5,700.0	0.0	0.0	320.96	

Survey Program		Date	5/31/2012		
From (ft)	To (ft)	Survey (Wellbore)	Tool Name	Description	
87.0	7,410.0	Survey #1 (Wellbore #1)	MWD	MWD - Standard	

Survey									
Measured Depth (ft)	Inclination (°)	Azimuth (°)	Vertical Depth (ft)	+N/-S (ft)	+E/-W (ft)	Vertical Section (ft)	Dogleg Rate (°/100ft)	Build Rate (°/100ft)	Turn Rate (°/100ft)
0.0	0.00	0.00	0.0	0.0	0.0	0.0	0.00	0.00	0.00
87.0	0.10	102.70	87.0	0.0	0.1	-0.1	0.11	0.11	0.00
174.0	1.20	192.40	174.0	-0.9	0.0	-0.7	1.38	1.26	103.10
268.0	1.10	185.30	268.0	-2.8	-0.3	-1.9	0.18	-0.11	-7.55
359.0	1.00	199.60	359.0	-4.4	-0.7	-3.0	0.31	-0.11	15.71
449.0	0.50	265.60	449.0	-5.2	-1.3	-3.2	1.02	-0.56	73.33
541.0	1.30	294.70	540.9	-4.8	-2.7	-2.0	0.97	0.87	31.63
632.0	2.80	318.00	631.9	-2.7	-5.1	1.1	1.85	1.65	25.60
723.0	4.70	321.40	722.7	1.9	-8.9	7.1	2.10	2.09	3.74
816.0	7.10	318.90	815.2	9.2	-15.1	16.6	2.59	2.58	-2.69
857.0	7.90	318.90	855.8	13.2	-18.6	22.0	1.95	1.95	0.00
948.0	8.60	319.40	945.9	23.1	-27.1	35.0	0.77	0.77	0.55
1,042.0	10.20	317.90	1,038.6	34.6	-37.3	50.4	1.72	1.70	-1.60

Company:	Great Western	Local Co-ordinate Reference:	Well H-Y 29-21-4
Project:	SEC.29-T6N-R67W	TVD Reference:	WELL @ 4797.0ft (Original Well Elev)
Site:	H-Y (West) Pad Sec.29-T6N-R67W	MD Reference:	WELL @ 4797.0ft (Original Well Elev)
Well:	H-Y 29-21-4	North Reference:	True
Wellbore:	Wellbore #1	Survey Calculation Method:	Minimum Curvature
Design:	Wellbore #1	Database:	Landmark

Survey										
Measured Depth (ft)	Inclination (°)	Azimuth (°)	Vertical Depth (ft)	+N/-S (ft)	+E/-W (ft)	Vertical Section (ft)	Dogleg Rate (°/100ft)	Build Rate (°/100ft)	Turn Rate (°/100ft)	
1,137.0	10.70	321.20	1,132.0	47.7	-48.5	67.6	0.82	0.53	3.47	
1,232.0	11.30	322.40	1,225.3	62.0	-59.7	85.7	0.68	0.63	1.26	
1,327.0	12.80	322.60	1,318.2	77.7	-71.7	105.5	1.58	1.58	0.21	
1,422.0	13.70	321.00	1,410.7	94.8	-85.2	127.3	1.02	0.95	-1.68	
1,517.0	14.20	320.10	1,502.9	112.5	-99.8	150.2	0.57	0.53	-0.95	
1,611.0	14.60	319.80	1,593.9	130.4	-114.8	173.6	0.43	0.43	-0.32	
1,706.0	14.20	321.50	1,685.9	148.7	-129.8	197.2	0.61	-0.42	1.79	
1,801.0	13.70	319.80	1,778.1	166.4	-144.3	220.1	0.68	-0.53	-1.79	
1,896.0	13.40	323.50	1,870.5	183.8	-158.1	242.4	0.97	-0.32	3.89	
1,991.0	12.90	322.40	1,963.0	201.1	-171.1	264.0	0.59	-0.53	-1.16	
2,086.0	13.00	321.90	2,055.6	217.9	-184.2	285.2	0.16	0.11	-0.53	
2,180.0	13.50	324.40	2,147.1	235.1	-197.1	306.8	0.81	0.53	2.66	
2,275.0	13.60	320.50	2,239.4	252.7	-210.7	329.0	0.97	0.11	-4.11	
2,370.0	15.20	321.00	2,331.5	271.0	-225.6	352.6	1.69	1.68	0.53	
2,465.0	15.30	321.20	2,423.1	290.5	-241.3	377.6	0.12	0.11	0.21	
2,560.0	13.40	320.80	2,515.1	308.8	-256.1	401.2	2.00	-2.00	-0.42	
2,654.0	13.10	319.80	2,606.6	325.4	-269.9	422.7	0.40	-0.32	-1.06	
2,749.0	14.20	323.80	2,699.0	343.0	-283.7	445.1	1.53	1.16	4.21	
2,844.0	14.40	324.00	2,791.0	362.0	-297.5	468.5	0.22	0.21	0.21	
2,939.0	12.00	323.50	2,883.5	379.5	-310.4	490.2	2.53	-2.53	-0.53	
3,034.0	13.40	318.40	2,976.2	395.6	-323.5	511.1	1.89	1.47	-5.37	
3,129.0	12.00	322.40	3,068.8	411.7	-336.9	531.9	1.74	-1.47	4.21	
3,223.0	12.00	325.80	3,160.8	427.5	-348.3	551.4	0.75	0.00	3.62	
3,318.0	11.90	324.20	3,253.7	443.6	-359.6	571.1	0.36	-0.11	-1.68	
3,414.0	11.40	322.40	3,347.8	459.2	-371.2	590.4	0.64	-0.52	-1.88	
3,509.0	10.50	320.50	3,441.0	473.3	-382.4	608.5	1.02	-0.95	-2.00	
3,603.0	12.80	321.70	3,533.1	488.1	-394.3	627.5	2.46	2.45	1.28	
3,698.0	13.50	322.60	3,625.6	505.1	-407.6	649.1	0.77	0.74	0.95	
3,791.0	13.60	321.20	3,716.0	522.3	-421.0	670.8	0.37	0.11	-1.51	
3,886.0	12.60	323.10	3,808.5	539.3	-434.2	692.4	1.15	-1.05	2.00	
3,980.0	10.30	323.10	3,900.7	554.2	-445.4	711.0	2.45	-2.45	0.00	
4,074.0	9.30	324.00	3,993.3	567.1	-455.0	727.0	1.08	-1.06	0.96	
4,168.0	9.50	323.70	4,086.0	579.5	-464.0	742.3	0.22	0.21	-0.32	
4,262.0	10.60	322.10	4,178.6	592.5	-473.9	758.7	1.21	1.17	-1.70	
4,356.0	12.30	323.70	4,270.7	607.4	-485.2	777.4	1.84	1.81	1.70	
4,450.0	13.10	322.40	4,362.4	623.9	-497.6	798.0	0.90	0.85	-1.38	
4,543.0	14.10	321.20	4,452.8	641.1	-511.1	819.9	1.12	1.08	-1.29	
4,637.0	14.20	321.50	4,543.9	659.1	-525.5	842.9	0.13	0.11	0.32	
4,730.0	14.90	321.40	4,634.0	677.3	-540.0	866.2	0.75	0.75	-0.11	
4,824.0	12.70	323.10	4,725.2	695.0	-553.8	888.6	2.38	-2.34	1.81	
4,919.0	10.60	324.20	4,818.3	710.5	-565.2	907.8	2.22	-2.21	1.16	
5,014.0	8.40	324.70	4,912.0	723.2	-574.3	923.5	2.32	-2.32	0.53	
5,109.0	6.30	327.00	5,006.2	733.3	-581.1	935.6	2.23	-2.21	2.42	
5,204.0	4.70	324.90	5,100.7	740.8	-586.2	944.6	1.70	-1.68	-2.21	
5,298.0	3.30	327.70	5,194.5	746.3	-589.9	951.2	1.50	-1.49	2.98	
5,393.0	2.30	335.10	5,289.4	750.3	-592.1	955.7	1.12	-1.05	7.79	
5,488.0	1.30	326.10	5,384.4	752.9	-593.5	958.6	1.09	-1.05	-9.47	
5,583.0	1.10	292.90	5,479.3	754.2	-595.0	960.5	0.75	-0.21	-34.95	
5,678.0	0.90	270.70	5,574.3	754.5	-596.6	961.8	0.45	-0.21	-23.37	
5,772.0	0.90	265.60	5,668.3	754.5	-598.0	962.7	0.09	0.00	-5.43	
5,803.9	0.93	262.08	5,700.2	754.4	-598.5	963.0	0.20	0.10	-11.04	
TARGET BHL 0'FNL & 1307'FWL										
5,867.0	1.00	255.80	5,763.3	754.2	-599.6	963.5	0.20	0.11	-9.95	
5,962.0	0.70	261.40	5,858.3	753.9	-601.0	964.1	0.33	-0.32	5.89	

Company:	Great Western	Local Co-ordinate Reference:	Well H-Y 29-21-4
Project:	SEC.29-T6N-R67W	TVD Reference:	WELL @ 4797.0ft (Original Well Elev)
Site:	H-Y (West) Pad Sec.29-T6N-R67W	MD Reference:	WELL @ 4797.0ft (Original Well Elev)
Well:	H-Y 29-21-4	North Reference:	True
Wellbore:	Wellbore #1	Survey Calculation Method:	Minimum Curvature
Design:	Wellbore #1	Database:	Landmark

Survey									
Measured Depth (ft)	Inclination (°)	Azimuth (°)	Vertical Depth (ft)	+N/-S (ft)	+E/-W (ft)	Vertical Section (ft)	Dogleg Rate (°/100ft)	Build Rate (°/100ft)	Turn Rate (°/100ft)
6,057.0	0.50	283.80	5,953.3	754.0	-601.9	964.7	0.32	-0.21	23.58
6,149.0	0.40	307.80	6,045.3	754.2	-602.6	965.4	0.23	-0.11	26.09
6,244.0	0.20	324.90	6,140.3	754.6	-602.9	965.9	0.23	-0.21	18.00
6,339.0	0.40	57.90	6,235.3	754.9	-602.7	966.0	0.48	0.21	97.89
6,434.0	0.40	36.40	6,330.3	755.3	-602.3	966.0	0.16	0.00	-22.63
6,528.0	0.40	7.40	6,424.3	755.9	-602.0	966.3	0.21	0.00	-30.85
6,623.0	1.00	352.50	6,519.3	757.1	-602.1	967.3	0.65	0.63	-15.68
6,718.0	0.00	169.70	6,614.3	757.9	-602.2	968.0	1.05	-1.05	0.00
6,904.7	0.79	159.30	6,801.0	756.7	-601.8	966.8	0.42	0.42	0.00
TARGET CIRCLE 0'FNL & 1307'FWL									
6,908.0	0.80	159.30	6,804.2	756.7	-601.7	966.7	0.42	0.42	0.00
7,103.0	0.50	138.40	6,999.2	754.7	-600.7	964.6	0.19	-0.15	-10.72
7,360.0	0.60	116.60	7,256.2	753.3	-598.7	962.2	0.09	0.04	-8.48
7,410.0	0.60	116.60	7,306.2	753.1	-598.3	961.8	0.00	0.00	0.00

Checked By: _____	Approved By: _____	Date: _____
-------------------	--------------------	-------------