

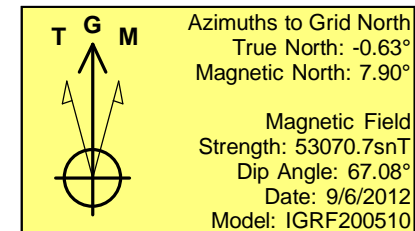
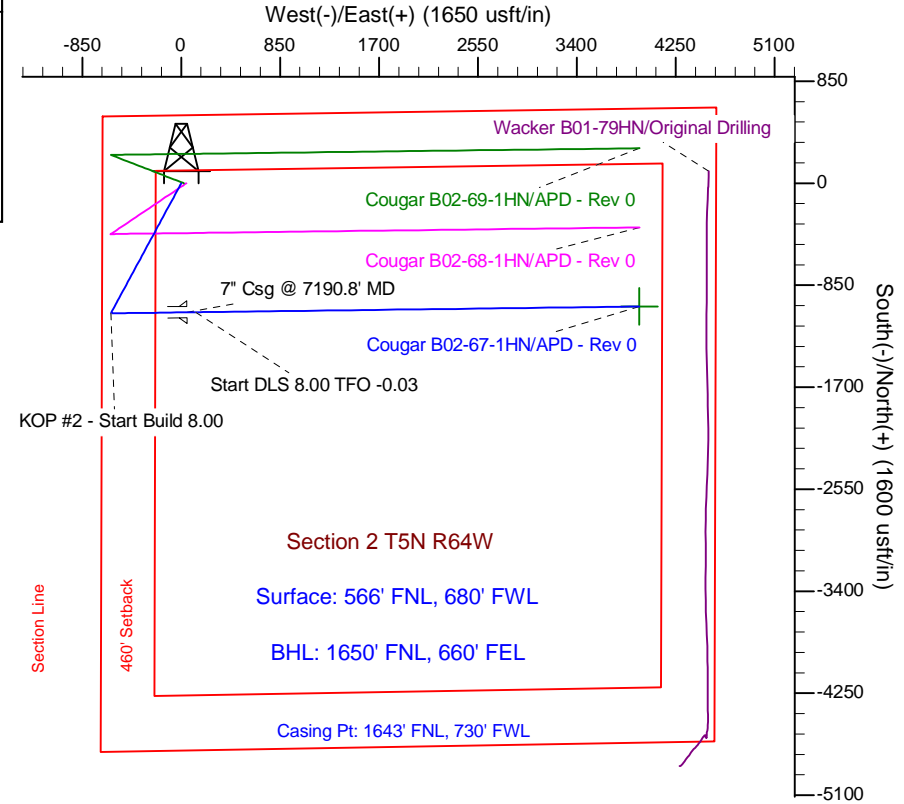
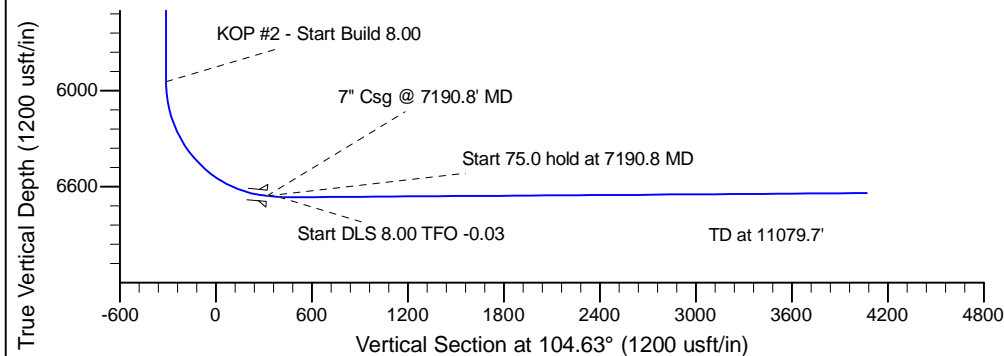
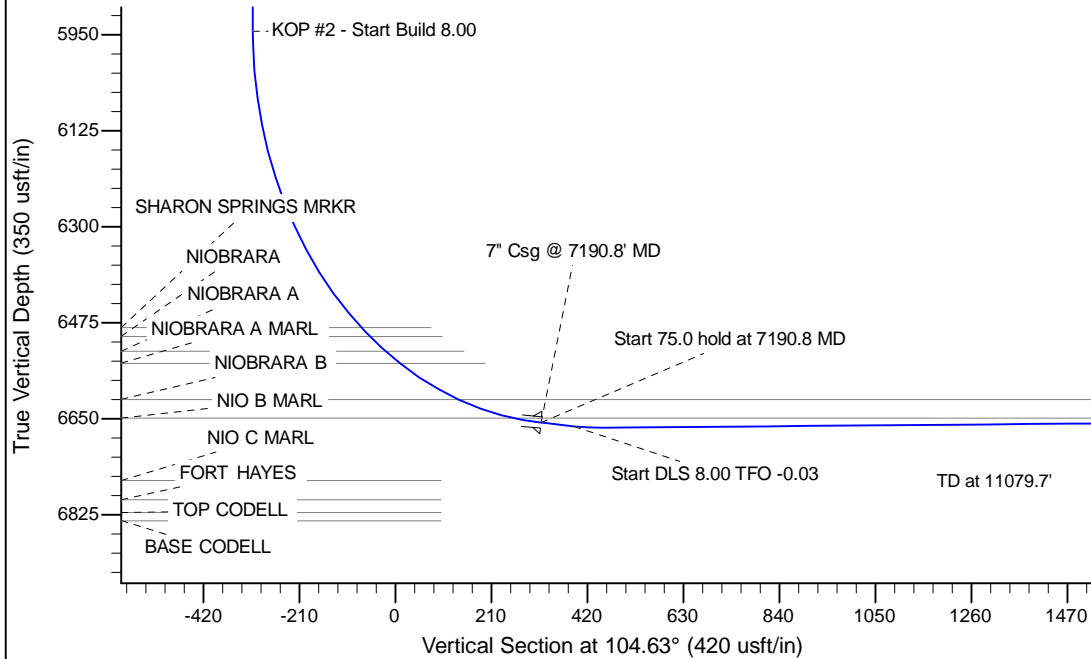
Project: Wattenberg Field
Site: B (Sec.2-T05N-R64W) Weld County, CO
Well: Cougar B02-67-1HN
Wellbore: Original Drilling
Design: APD - Rev 0

Northern Region Drilling

Geodetic System: US State Plane 1983
Datum: North American Datum 1983
Ellipsoid: GRS 1980
Zone: Colorado Northern Zone
System Datum: Mean Sea Level

SECTION DETAILS

Sec	MD	Inc	Azi	TVD	+N/-S	+E/-W	Dleg	TFace	VSect	Target
1	0.0	0.00	0.00	0.0	0.0	0.0	0.00	0.00	0.0	
2	1000.0	0.00	0.00	1000.0	0.0	0.0	0.00	0.00	0.0	
3	1719.3	17.98	209.17	1707.5	-97.8	-54.6	2.50	209.17	-28.1	
4	5015.2	17.98	209.17	4842.5	-986.2	-550.4	0.00	0.00	-283.5	
5	5734.5	0.00	0.00	5550.0	-1084.0	-605.0	2.50	180.00	-311.6	
6	6128.3	0.00	0.00	5943.8	-1084.0	-605.0	0.00	0.00	-311.6	
7	7190.8	85.00	89.29	6657.3	-1075.9	48.7	8.00	89.29	318.9	
8	7265.8	85.00	89.29	6663.8	-1075.0	123.4	0.00	0.00	390.9	
9	7333.3	90.40	89.29	6666.5	-1074.1	190.8	8.00	-0.03	455.9	
10	11079.7	90.40	89.29	6640.6	-1027.5	3936.9	0.00	0.00	4068.8	Cougar B02-67-1HN BHL 1650'FNL, 660'FEL



WELL DETAILS: Cougar B02-67-1HN			
Ground Level:	4641.0	Latitude	40.434070
Northing	1402466.08	Easting	3271583.81
Longitude	-104.524360		
Plan: APD - Rev 0 (Cougar B02-67-1HN/Original Drilling)			
Created By:	Carrie Willers	Date:	16:54, September 11 2012
Checked:		Date:	
Reviewed:		Date:	
Approved:		Date:	