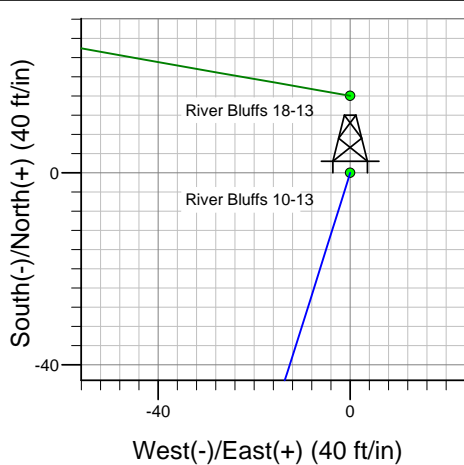
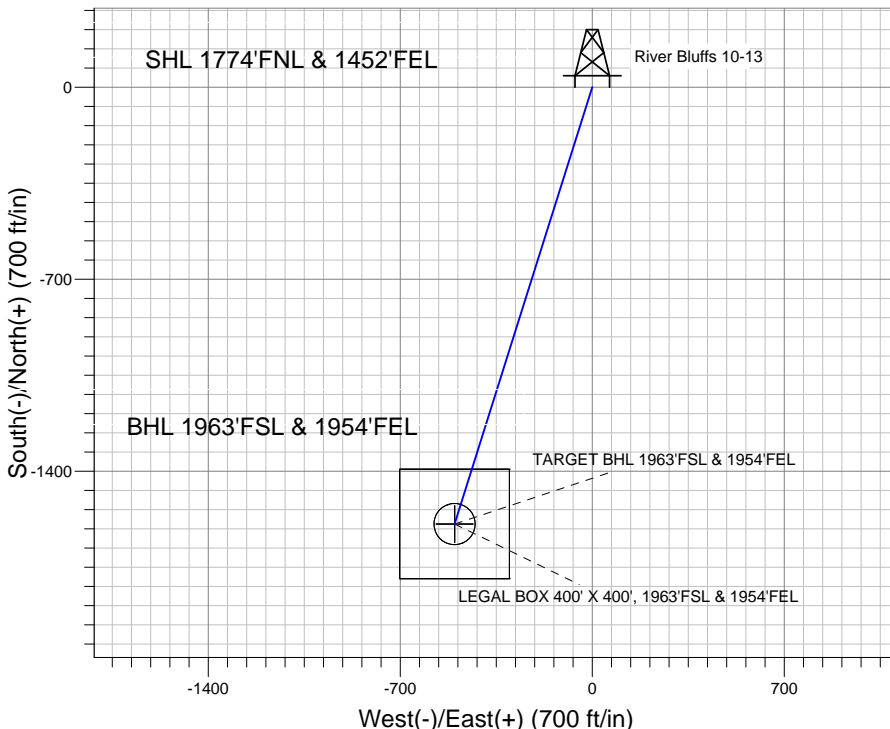
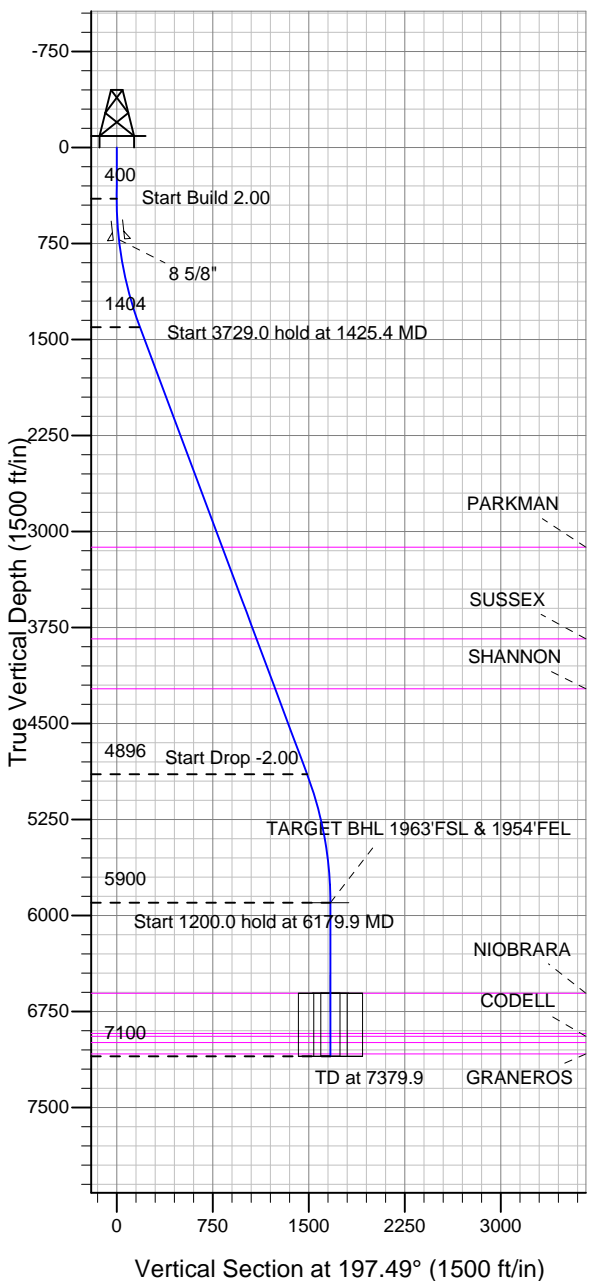


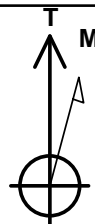
Well Name: River Bluffs 10-13

Surface Location: River Bluffs 10-13 Pad Sec.13-T6N-R68W
 North American Datum 1983 US State Plane 1983 Colorado Northern Zone
 Ground Elevation: 4802.0
 +N/-S +E/-W Northing Easting Latitude Longitude Slot
 0.0 0.0 1421477.98 3153159.01 40.489053 -104.949351
 Original Well Elev WELL @ 4818.0ft (Original Well Elev)

BAYSWATER EXPLORATION & PRODUCTION



River Bluffs 10-13 Pad Sec.13-T6N-R68W
 River Bluffs 10-13
 Plan #1 (6-28-12)
 11:41, July 03 2012



Azimuths to True North
 Magnetic North: 8.83°

Magnetic Field
 Strength: 53049.0snT
 Dip Angle: 67.06°
 Date: 6/28/2012
 Model: IGRF2010

WELLBORE TARGET DETAILS (LAT/LONG)

Name	TVD	+N/-S	+E/-W	Latitude	Longitude	Shape
TARGET BHL 1963'FSL & 1954'FEL	5900.0	-1592.4	-501.8	40.484682	-104.951155	Point
LEGAL BOX 400' X 400', 1963'FSL & 1954'FEL	6608.0	-1592.4	-501.8	40.484682	-104.951155	Rectangle (Sides: L400.0 W400.0)
TARGET CIRCLE 1963'FSL & 1964'FEL	6608.0	-1592.4	-501.8	40.484682	-104.951155	Circle (Radius: 75.0)

SECTION DETAILS

Sec	MD	Inc	Azi	TVD	+N/-S	+E/-W	DLeg	TFace	VSec	Target
1	0.0	0.00	0.00	0.0	0.0	0.0	0.00	0.00	0.0	
2	400.0	0.00	0.00	400.0	0.0	0.0	0.00	0.00	0.0	
3	1425.4	20.51	197.49	1403.7	-173.2	-54.6	2.00	197.49	181.6	
4	5154.4	20.51	197.49	4896.3	-1419.2	-447.2	0.00	0.00	1488.0	
5	6179.9	0.00	0.00	5900.0	-1592.4	-501.8	2.00	180.00	1669.6	TARGET BHL 1963'FSL & 1954'FEL
6	7379.9	0.00	0.00	7100.0	-1592.4	-501.8	0.00	0.00	1669.6	



Directional

BAYSWATER EXPLORATION & PRODUCTION

SEC.13-T6N-R68W

River Bluffs 10-13 Pad Sec.13-T6N-R68W

River Bluffs 10-13

Wellbore #1

Plan: Plan #1 (6-28-12)

Standard Planning Report

03 July, 2012

Database:	Landmark	Local Co-ordinate Reference:	Well River Bluffs 10-13
Company:	BAYSWATER EXPLORATION & PRODUCTION	TVD Reference:	WELL @ 4818.0ft (Original Well Elev)
Project:	SEC.13-T6N-R68W	MD Reference:	WELL @ 4818.0ft (Original Well Elev)
Site:	River Bluffs 10-13 Pad Sec.13-T6N-R68W	North Reference:	True
Well:	River Bluffs 10-13	Survey Calculation Method:	Minimum Curvature
Wellbore:	Wellbore #1		
Design:	Plan #1 (6-28-12)		

Project	SEC.13-T6N-R68W, Larimer County, CO		
Map System:	US State Plane 1983	System Datum:	Mean Sea Level
Geo Datum:	North American Datum 1983		Using Well Reference Point
Map Zone:	Colorado Northern Zone		Using geodetic scale factor

Site						River Bluffs 10-13 Pad Sec.13-T6N-R68W											
Site Position:						Northing:			1,421,477.99 ft			Latitude:			40.489053		
From:			Lat/Long			Easting:			3,153,159.01 ft			Longitude:			-104.949351		
Position Uncertainty:			0.0 ft			Slot Radius:			"			Grid Convergence:			0.36 °		

Well	River Bluffs 10-13					
Well Position	+N/-S	0.0 ft	Northing:	1,421,477.98 ft	Latitude:	40.489053
	+E/-W	0.0 ft	Easting:	3,153,159.01 ft	Longitude:	-104.949351
Position Uncertainty		0.0 ft	Wellhead Elevation:	ft	Ground Level:	4,802.0 ft

Wellbore	Wellbore #1				
Magnetics	Model Name	Sample Date	Declination (°)	Dip Angle (°)	Field Strength (nT)
	IGRF2010	6/28/2012	8.83	67.06	53,049

Design	Plan #1 (6-28-12)			
Audit Notes:				
Version:	Phase:	PROTOTYPE	Tie On Depth:	0.0
Vertical Section:	Depth From (TVD) (ft)	+N/-S (ft)	+E/-W (ft)	Direction (°)
	0.0	0.0	0.0	197.49

Plan Sections										
Measured Depth (ft)	Inclination (°)	Azimuth (°)	Vertical Depth (ft)	+N/-S (ft)	+E/-W (ft)	Dogleg Rate (°/100ft)	Build Rate (°/100ft)	Turn Rate (°/100ft)	TFO (°)	Target
0.0	0.00	0.00	0.0	0.0	0.0	0.00	0.00	0.00	0.00	
400.0	0.00	0.00	400.0	0.0	0.0	0.00	0.00	0.00	0.00	
1,425.4	20.51	197.49	1,403.7	-173.2	-54.6	2.00	2.00	0.00	197.49	
5,154.4	20.51	197.49	4,896.3	-1,419.2	-447.2	0.00	0.00	0.00	0.00	
6,179.9	0.00	0.00	5,900.0	-1,592.4	-501.8	2.00	-2.00	0.00	180.00	TARGET BHL 1963
7,379.9	0.00	0.00	7,100.0	-1,592.4	-501.8	0.00	0.00	0.00	0.00	

Database:	Landmark	Local Co-ordinate Reference:	Well River Bluffs 10-13
Company:	BAYSWATER EXPLORATION & PRODUCTION	TVD Reference:	WELL @ 4818.0ft (Original Well Elev)
Project:	SEC.13-T6N-R68W	MD Reference:	WELL @ 4818.0ft (Original Well Elev)
Site:	River Bluffs 10-13 Pad Sec.13-T6N-R68W	North Reference:	True
Well:	River Bluffs 10-13	Survey Calculation Method:	Minimum Curvature
Wellbore:	Wellbore #1		
Design:	Plan #1 (6-28-12)		

Planned Survey

Measured Depth (ft)	Inclination (°)	Azimuth (°)	Vertical Depth (ft)	+N/-S (ft)	+E/-W (ft)	Vertical Section (ft)	Dogleg Rate (°/100ft)	Build Rate (°/100ft)	Turn Rate (°/100ft)
0.0	0.00	0.00	0.0	0.0	0.0	0.0	0.00	0.00	0.00
40.0	0.00	0.00	40.0	0.0	0.0	0.0	0.00	0.00	0.00
80.0	0.00	0.00	80.0	0.0	0.0	0.0	0.00	0.00	0.00
120.0	0.00	0.00	120.0	0.0	0.0	0.0	0.00	0.00	0.00
160.0	0.00	0.00	160.0	0.0	0.0	0.0	0.00	0.00	0.00
200.0	0.00	0.00	200.0	0.0	0.0	0.0	0.00	0.00	0.00
240.0	0.00	0.00	240.0	0.0	0.0	0.0	0.00	0.00	0.00
280.0	0.00	0.00	280.0	0.0	0.0	0.0	0.00	0.00	0.00
320.0	0.00	0.00	320.0	0.0	0.0	0.0	0.00	0.00	0.00
360.0	0.00	0.00	360.0	0.0	0.0	0.0	0.00	0.00	0.00
400.0	0.00	0.00	400.0	0.0	0.0	0.0	0.00	0.00	0.00
440.0	0.80	197.49	440.0	-0.3	-0.1	0.3	2.00	2.00	0.00
480.0	1.60	197.49	480.0	-1.1	-0.3	1.1	2.00	2.00	0.00
520.0	2.40	197.49	520.0	-2.4	-0.8	2.5	2.00	2.00	0.00
560.0	3.20	197.49	559.9	-4.3	-1.3	4.5	2.00	2.00	0.00
600.0	4.00	197.49	599.8	-6.7	-2.1	7.0	2.00	2.00	0.00
640.0	4.80	197.49	639.7	-9.6	-3.0	10.0	2.00	2.00	0.00
680.0	5.60	197.49	679.6	-13.0	-4.1	13.7	2.00	2.00	0.00
720.0	6.40	197.49	719.3	-17.0	-5.4	17.9	2.00	2.00	0.00
720.7	6.41	197.49	720.0	-17.1	-5.4	17.9	2.00	2.00	0.00
8 5/8"									
760.0	7.20	197.49	759.1	-21.5	-6.8	22.6	2.00	2.00	0.00
800.0	8.00	197.49	798.7	-26.6	-8.4	27.9	2.00	2.00	0.00
840.0	8.80	197.49	838.3	-32.2	-10.1	33.7	2.00	2.00	0.00
880.0	9.60	197.49	877.8	-38.3	-12.1	40.1	2.00	2.00	0.00
920.0	10.40	197.49	917.1	-44.9	-14.1	47.1	2.00	2.00	0.00
960.0	11.20	197.49	956.4	-52.0	-16.4	54.6	2.00	2.00	0.00
1,000.0	12.00	197.49	995.6	-59.7	-18.8	62.6	2.00	2.00	0.00
1,040.0	12.80	197.49	1,034.7	-67.9	-21.4	71.2	2.00	2.00	0.00
1,080.0	13.60	197.49	1,073.6	-76.6	-24.1	80.3	2.00	2.00	0.00
1,120.0	14.40	197.49	1,112.4	-85.8	-27.1	90.0	2.00	2.00	0.00
1,160.0	15.20	197.49	1,151.1	-95.6	-30.1	100.2	2.00	2.00	0.00
1,200.0	16.00	197.49	1,189.6	-105.8	-33.4	111.0	2.00	2.00	0.00
1,240.0	16.80	197.49	1,228.0	-116.6	-36.7	122.3	2.00	2.00	0.00
1,280.0	17.60	197.49	1,266.2	-127.9	-40.3	134.1	2.00	2.00	0.00
1,320.0	18.40	197.49	1,304.3	-139.7	-44.0	146.5	2.00	2.00	0.00
1,360.0	19.20	197.49	1,342.1	-152.0	-47.9	159.3	2.00	2.00	0.00
1,400.0	20.00	197.49	1,379.8	-164.8	-51.9	172.8	2.00	2.00	0.00
1,425.4	20.51	197.49	1,403.7	-173.2	-54.6	181.6	2.00	2.00	0.00
1,440.0	20.51	197.49	1,417.3	-178.0	-56.1	186.7	0.00	0.00	0.00
1,480.0	20.51	197.49	1,454.8	-191.4	-60.3	200.7	0.00	0.00	0.00
1,520.0	20.51	197.49	1,492.2	-204.8	-64.5	214.7	0.00	0.00	0.00
1,560.0	20.51	197.49	1,529.7	-218.1	-68.7	228.7	0.00	0.00	0.00
1,600.0	20.51	197.49	1,567.2	-231.5	-73.0	242.7	0.00	0.00	0.00
1,640.0	20.51	197.49	1,604.6	-244.9	-77.2	256.7	0.00	0.00	0.00
1,680.0	20.51	197.49	1,642.1	-258.2	-81.4	270.8	0.00	0.00	0.00
1,720.0	20.51	197.49	1,679.6	-271.6	-85.6	284.8	0.00	0.00	0.00
1,760.0	20.51	197.49	1,717.0	-285.0	-89.8	298.8	0.00	0.00	0.00
1,800.0	20.51	197.49	1,754.5	-298.3	-94.0	312.8	0.00	0.00	0.00
1,840.0	20.51	197.49	1,792.0	-311.7	-98.2	326.8	0.00	0.00	0.00
1,880.0	20.51	197.49	1,829.4	-325.1	-102.4	340.8	0.00	0.00	0.00
1,920.0	20.51	197.49	1,866.9	-338.4	-106.7	354.8	0.00	0.00	0.00
1,960.0	20.51	197.49	1,904.4	-351.8	-110.9	368.9	0.00	0.00	0.00

Database:	Landmark	Local Co-ordinate Reference:	Well River Bluffs 10-13
Company:	BAYSWATER EXPLORATION & PRODUCTION	TVD Reference:	WELL @ 4818.0ft (Original Well Elev)
Project:	SEC.13-T6N-R68W	MD Reference:	WELL @ 4818.0ft (Original Well Elev)
Site:	River Bluffs 10-13 Pad Sec.13-T6N-R68W	North Reference:	True
Well:	River Bluffs 10-13	Survey Calculation Method:	Minimum Curvature
Wellbore:	Wellbore #1		
Design:	Plan #1 (6-28-12)		

Planned Survey									
Measured Depth (ft)	Inclination (°)	Azimuth (°)	Vertical Depth (ft)	+N/-S (ft)	+E/-W (ft)	Vertical Section (ft)	Dogleg Rate (°/100ft)	Build Rate (°/100ft)	Turn Rate (°/100ft)
2,000.0	20.51	197.49	1,941.8	-365.2	-115.1	382.9	0.00	0.00	0.00
2,040.0	20.51	197.49	1,979.3	-378.5	-119.3	396.9	0.00	0.00	0.00
2,080.0	20.51	197.49	2,016.8	-391.9	-123.5	410.9	0.00	0.00	0.00
2,120.0	20.51	197.49	2,054.2	-405.3	-127.7	424.9	0.00	0.00	0.00
2,160.0	20.51	197.49	2,091.7	-418.6	-131.9	438.9	0.00	0.00	0.00
2,200.0	20.51	197.49	2,129.1	-432.0	-136.1	452.9	0.00	0.00	0.00
2,240.0	20.51	197.49	2,166.6	-445.4	-140.4	467.0	0.00	0.00	0.00
2,280.0	20.51	197.49	2,204.1	-458.7	-144.6	481.0	0.00	0.00	0.00
2,320.0	20.51	197.49	2,241.5	-472.1	-148.8	495.0	0.00	0.00	0.00
2,360.0	20.51	197.49	2,279.0	-485.5	-153.0	509.0	0.00	0.00	0.00
2,400.0	20.51	197.49	2,316.5	-498.8	-157.2	523.0	0.00	0.00	0.00
2,440.0	20.51	197.49	2,353.9	-512.2	-161.4	537.0	0.00	0.00	0.00
2,480.0	20.51	197.49	2,391.4	-525.6	-165.6	551.0	0.00	0.00	0.00
2,520.0	20.51	197.49	2,428.9	-538.9	-169.8	565.1	0.00	0.00	0.00
2,560.0	20.51	197.49	2,466.3	-552.3	-174.0	579.1	0.00	0.00	0.00
2,600.0	20.51	197.49	2,503.8	-565.7	-178.3	593.1	0.00	0.00	0.00
2,640.0	20.51	197.49	2,541.3	-579.0	-182.5	607.1	0.00	0.00	0.00
2,680.0	20.51	197.49	2,578.7	-592.4	-186.7	621.1	0.00	0.00	0.00
2,720.0	20.51	197.49	2,616.2	-605.8	-190.9	635.1	0.00	0.00	0.00
2,760.0	20.51	197.49	2,653.7	-619.1	-195.1	649.1	0.00	0.00	0.00
2,800.0	20.51	197.49	2,691.1	-632.5	-199.3	663.2	0.00	0.00	0.00
2,840.0	20.51	197.49	2,728.6	-645.9	-203.5	677.2	0.00	0.00	0.00
2,880.0	20.51	197.49	2,766.0	-659.2	-207.7	691.2	0.00	0.00	0.00
2,920.0	20.51	197.49	2,803.5	-672.6	-212.0	705.2	0.00	0.00	0.00
2,960.0	20.51	197.49	2,841.0	-686.0	-216.2	719.2	0.00	0.00	0.00
3,000.0	20.51	197.49	2,878.4	-699.3	-220.4	733.2	0.00	0.00	0.00
3,040.0	20.51	197.49	2,915.9	-712.7	-224.6	747.2	0.00	0.00	0.00
3,080.0	20.51	197.49	2,953.4	-726.1	-228.8	761.3	0.00	0.00	0.00
3,120.0	20.51	197.49	2,990.8	-739.4	-233.0	775.3	0.00	0.00	0.00
3,160.0	20.51	197.49	3,028.3	-752.8	-237.2	789.3	0.00	0.00	0.00
3,200.0	20.51	197.49	3,065.8	-766.2	-241.4	803.3	0.00	0.00	0.00
3,240.0	20.51	197.49	3,103.2	-779.5	-245.7	817.3	0.00	0.00	0.00
3,261.1	20.51	197.49	3,123.0	-786.6	-247.9	824.7	0.00	0.00	0.00
PARKMAN									
3,280.0	20.51	197.49	3,140.7	-792.9	-249.9	831.3	0.00	0.00	0.00
3,320.0	20.51	197.49	3,178.2	-806.3	-254.1	845.3	0.00	0.00	0.00
3,360.0	20.51	197.49	3,215.6	-819.6	-258.3	859.4	0.00	0.00	0.00
3,400.0	20.51	197.49	3,253.1	-833.0	-262.5	873.4	0.00	0.00	0.00
3,440.0	20.51	197.49	3,290.6	-846.4	-266.7	887.4	0.00	0.00	0.00
3,480.0	20.51	197.49	3,328.0	-859.7	-270.9	901.4	0.00	0.00	0.00
3,520.0	20.51	197.49	3,365.5	-873.1	-275.1	915.4	0.00	0.00	0.00
3,560.0	20.51	197.49	3,402.9	-886.4	-279.4	929.4	0.00	0.00	0.00
3,600.0	20.51	197.49	3,440.4	-899.8	-283.6	943.4	0.00	0.00	0.00
3,640.0	20.51	197.49	3,477.9	-913.2	-287.8	957.5	0.00	0.00	0.00
3,680.0	20.51	197.49	3,515.3	-926.5	-292.0	971.5	0.00	0.00	0.00
3,720.0	20.51	197.49	3,552.8	-939.9	-296.2	985.5	0.00	0.00	0.00
3,760.0	20.51	197.49	3,590.3	-953.3	-300.4	999.5	0.00	0.00	0.00
3,800.0	20.51	197.49	3,627.7	-966.6	-304.6	1,013.5	0.00	0.00	0.00
3,840.0	20.51	197.49	3,665.2	-980.0	-308.8	1,027.5	0.00	0.00	0.00
3,880.0	20.51	197.49	3,702.7	-993.4	-313.0	1,041.5	0.00	0.00	0.00
3,920.0	20.51	197.49	3,740.1	-1,006.7	-317.3	1,055.6	0.00	0.00	0.00
3,960.0	20.51	197.49	3,777.6	-1,020.1	-321.5	1,069.6	0.00	0.00	0.00
4,000.0	20.51	197.49	3,815.1	-1,033.5	-325.7	1,083.6	0.00	0.00	0.00

Database:	Landmark	Local Co-ordinate Reference:	Well River Bluffs 10-13
Company:	BAYSWATER EXPLORATION & PRODUCTION	TVD Reference:	WELL @ 4818.0ft (Original Well Elev)
Project:	SEC.13-T6N-R68W	MD Reference:	WELL @ 4818.0ft (Original Well Elev)
Site:	River Bluffs 10-13 Pad Sec.13-T6N-R68W	North Reference:	True
Well:	River Bluffs 10-13	Survey Calculation Method:	Minimum Curvature
Wellbore:	Wellbore #1		
Design:	Plan #1 (6-28-12)		

Planned Survey									
Measured Depth (ft)	Inclination (°)	Azimuth (°)	Vertical Depth (ft)	+N/-S (ft)	+E/-W (ft)	Vertical Section (ft)	Dogleg Rate (°/100ft)	Build Rate (°/100ft)	Turn Rate (°/100ft)
4,024.5	20.51	197.49	3,838.0	-1,041.7	-328.3	1,092.2	0.00	0.00	0.00
SUSSEX									
4,040.0	20.51	197.49	3,852.5	-1,046.8	-329.9	1,097.6	0.00	0.00	0.00
4,080.0	20.51	197.49	3,890.0	-1,060.2	-334.1	1,111.6	0.00	0.00	0.00
4,120.0	20.51	197.49	3,927.5	-1,073.6	-338.3	1,125.6	0.00	0.00	0.00
4,160.0	20.51	197.49	3,964.9	-1,086.9	-342.5	1,139.6	0.00	0.00	0.00
4,200.0	20.51	197.49	4,002.4	-1,100.3	-346.7	1,153.6	0.00	0.00	0.00
4,240.0	20.51	197.49	4,039.8	-1,113.7	-351.0	1,167.7	0.00	0.00	0.00
4,280.0	20.51	197.49	4,077.3	-1,127.0	-355.2	1,181.7	0.00	0.00	0.00
4,320.0	20.51	197.49	4,114.8	-1,140.4	-359.4	1,195.7	0.00	0.00	0.00
4,360.0	20.51	197.49	4,152.2	-1,153.8	-363.6	1,209.7	0.00	0.00	0.00
4,400.0	20.51	197.49	4,189.7	-1,167.1	-367.8	1,223.7	0.00	0.00	0.00
4,440.0	20.51	197.49	4,227.2	-1,180.5	-372.0	1,237.7	0.00	0.00	0.00
4,440.9	20.51	197.49	4,228.0	-1,180.8	-372.1	1,238.0	0.00	0.00	0.00
SHANNON									
4,480.0	20.51	197.49	4,264.6	-1,193.9	-376.2	1,251.7	0.00	0.00	0.00
4,520.0	20.51	197.49	4,302.1	-1,207.2	-380.4	1,265.8	0.00	0.00	0.00
4,560.0	20.51	197.49	4,339.6	-1,220.6	-384.7	1,279.8	0.00	0.00	0.00
4,600.0	20.51	197.49	4,377.0	-1,234.0	-388.9	1,293.8	0.00	0.00	0.00
4,640.0	20.51	197.49	4,414.5	-1,247.3	-393.1	1,307.8	0.00	0.00	0.00
4,680.0	20.51	197.49	4,452.0	-1,260.7	-397.3	1,321.8	0.00	0.00	0.00
4,720.0	20.51	197.49	4,489.4	-1,274.1	-401.5	1,335.8	0.00	0.00	0.00
4,760.0	20.51	197.49	4,526.9	-1,287.4	-405.7	1,349.8	0.00	0.00	0.00
4,800.0	20.51	197.49	4,564.4	-1,300.8	-409.9	1,363.9	0.00	0.00	0.00
4,840.0	20.51	197.49	4,601.8	-1,314.2	-414.1	1,377.9	0.00	0.00	0.00
4,880.0	20.51	197.49	4,639.3	-1,327.5	-418.4	1,391.9	0.00	0.00	0.00
4,920.0	20.51	197.49	4,676.7	-1,340.9	-422.6	1,405.9	0.00	0.00	0.00
4,960.0	20.51	197.49	4,714.2	-1,354.3	-426.8	1,419.9	0.00	0.00	0.00
5,000.0	20.51	197.49	4,751.7	-1,367.6	-431.0	1,433.9	0.00	0.00	0.00
5,040.0	20.51	197.49	4,789.1	-1,381.0	-435.2	1,447.9	0.00	0.00	0.00
5,080.0	20.51	197.49	4,826.6	-1,394.4	-439.4	1,462.0	0.00	0.00	0.00
5,120.0	20.51	197.49	4,864.1	-1,407.7	-443.6	1,476.0	0.00	0.00	0.00
5,154.4	20.51	197.49	4,896.3	-1,419.2	-447.2	1,488.0	0.00	0.00	0.00
5,160.0	20.40	197.49	4,901.5	-1,421.1	-447.8	1,490.0	2.00	-2.00	0.00
5,200.0	19.60	197.49	4,939.1	-1,434.1	-451.9	1,503.7	2.00	-2.00	0.00
5,240.0	18.80	197.49	4,976.9	-1,446.7	-455.9	1,516.8	2.00	-2.00	0.00
5,280.0	18.00	197.49	5,014.9	-1,458.7	-459.7	1,529.4	2.00	-2.00	0.00
5,320.0	17.20	197.49	5,053.0	-1,470.3	-463.3	1,541.5	2.00	-2.00	0.00
5,360.0	16.40	197.49	5,091.3	-1,481.3	-466.8	1,553.1	2.00	-2.00	0.00
5,400.0	15.60	197.49	5,129.7	-1,491.8	-470.1	1,564.1	2.00	-2.00	0.00
5,440.0	14.80	197.49	5,168.3	-1,501.8	-473.3	1,574.6	2.00	-2.00	0.00
5,480.0	14.00	197.49	5,207.1	-1,511.3	-476.3	1,584.5	2.00	-2.00	0.00
5,520.0	13.20	197.49	5,246.0	-1,520.2	-479.1	1,594.0	2.00	-2.00	0.00
5,560.0	12.40	197.49	5,285.0	-1,528.7	-481.7	1,602.8	2.00	-2.00	0.00
5,600.0	11.60	197.49	5,324.1	-1,536.6	-484.2	1,611.1	2.00	-2.00	0.00
5,640.0	10.80	197.49	5,363.3	-1,544.0	-486.6	1,618.9	2.00	-2.00	0.00
5,680.0	10.00	197.49	5,402.7	-1,550.9	-488.7	1,626.1	2.00	-2.00	0.00
5,720.0	9.20	197.49	5,442.1	-1,557.3	-490.8	1,632.8	2.00	-2.00	0.00
5,760.0	8.40	197.49	5,481.6	-1,563.1	-492.6	1,638.9	2.00	-2.00	0.00
5,800.0	7.60	197.49	5,521.2	-1,568.4	-494.3	1,644.5	2.00	-2.00	0.00
5,840.0	6.80	197.49	5,560.9	-1,573.2	-495.8	1,649.5	2.00	-2.00	0.00
5,880.0	6.00	197.49	5,600.7	-1,577.5	-497.1	1,653.9	2.00	-2.00	0.00
5,920.0	5.20	197.49	5,640.5	-1,581.2	-498.3	1,657.8	2.00	-2.00	0.00

Database:	Landmark	Local Co-ordinate Reference:	Well River Bluffs 10-13
Company:	BAYSWATER EXPLORATION & PRODUCTION	TVD Reference:	WELL @ 4818.0ft (Original Well Elev)
Project:	SEC.13-T6N-R68W	MD Reference:	WELL @ 4818.0ft (Original Well Elev)
Site:	River Bluffs 10-13 Pad Sec.13-T6N-R68W	North Reference:	True
Well:	River Bluffs 10-13	Survey Calculation Method:	Minimum Curvature
Wellbore:	Wellbore #1		
Design:	Plan #1 (6-28-12)		

Planned Survey									
Measured Depth (ft)	Inclination (°)	Azimuth (°)	Vertical Depth (ft)	+N/-S (ft)	+E/-W (ft)	Vertical Section (ft)	Dogleg Rate (°/100ft)	Build Rate (°/100ft)	Turn Rate (°/100ft)
5,960.0	4.40	197.49	5,680.3	-1,584.4	-499.3	1,661.2	2.00	-2.00	0.00
6,000.0	3.60	197.49	5,720.3	-1,587.0	-500.1	1,664.0	2.00	-2.00	0.00
6,040.0	2.80	197.49	5,760.2	-1,589.2	-500.8	1,666.2	2.00	-2.00	0.00
6,080.0	2.00	197.49	5,800.2	-1,590.8	-501.3	1,667.9	2.00	-2.00	0.00
6,120.0	1.20	197.49	5,840.1	-1,591.8	-501.6	1,669.0	2.00	-2.00	0.00
6,160.0	0.40	197.49	5,880.1	-1,592.3	-501.8	1,669.5	2.00	-2.00	0.00
6,179.9	0.00	0.00	5,900.0	-1,592.4	-501.8	1,669.6	2.00	-2.00	0.00
6,200.0	0.00	0.00	5,920.1	-1,592.4	-501.8	1,669.6	0.00	0.00	0.00
6,240.0	0.00	0.00	5,960.1	-1,592.4	-501.8	1,669.6	0.00	0.00	0.00
6,280.0	0.00	0.00	6,000.1	-1,592.4	-501.8	1,669.6	0.00	0.00	0.00
6,320.0	0.00	0.00	6,040.1	-1,592.4	-501.8	1,669.6	0.00	0.00	0.00
6,360.0	0.00	0.00	6,080.1	-1,592.4	-501.8	1,669.6	0.00	0.00	0.00
6,400.0	0.00	0.00	6,120.1	-1,592.4	-501.8	1,669.6	0.00	0.00	0.00
6,440.0	0.00	0.00	6,160.1	-1,592.4	-501.8	1,669.6	0.00	0.00	0.00
6,480.0	0.00	0.00	6,200.1	-1,592.4	-501.8	1,669.6	0.00	0.00	0.00
6,520.0	0.00	0.00	6,240.1	-1,592.4	-501.8	1,669.6	0.00	0.00	0.00
6,560.0	0.00	0.00	6,280.1	-1,592.4	-501.8	1,669.6	0.00	0.00	0.00
6,600.0	0.00	0.00	6,320.1	-1,592.4	-501.8	1,669.6	0.00	0.00	0.00
6,640.0	0.00	0.00	6,360.1	-1,592.4	-501.8	1,669.6	0.00	0.00	0.00
6,680.0	0.00	0.00	6,400.1	-1,592.4	-501.8	1,669.6	0.00	0.00	0.00
6,720.0	0.00	0.00	6,440.1	-1,592.4	-501.8	1,669.6	0.00	0.00	0.00
6,760.0	0.00	0.00	6,480.1	-1,592.4	-501.8	1,669.6	0.00	0.00	0.00
6,800.0	0.00	0.00	6,520.1	-1,592.4	-501.8	1,669.6	0.00	0.00	0.00
6,840.0	0.00	0.00	6,560.1	-1,592.4	-501.8	1,669.6	0.00	0.00	0.00
6,880.0	0.00	0.00	6,600.1	-1,592.4	-501.8	1,669.6	0.00	0.00	0.00
6,887.9	0.00	0.00	6,608.0	-1,592.4	-501.8	1,669.6	0.00	0.00	0.00
NIOBRARA									
6,920.0	0.00	0.00	6,640.1	-1,592.4	-501.8	1,669.6	0.00	0.00	0.00
6,960.0	0.00	0.00	6,680.1	-1,592.4	-501.8	1,669.6	0.00	0.00	0.00
7,000.0	0.00	0.00	6,720.1	-1,592.4	-501.8	1,669.6	0.00	0.00	0.00
7,040.0	0.00	0.00	6,760.1	-1,592.4	-501.8	1,669.6	0.00	0.00	0.00
7,080.0	0.00	0.00	6,800.1	-1,592.4	-501.8	1,669.6	0.00	0.00	0.00
7,120.0	0.00	0.00	6,840.1	-1,592.4	-501.8	1,669.6	0.00	0.00	0.00
7,160.0	0.00	0.00	6,880.1	-1,592.4	-501.8	1,669.6	0.00	0.00	0.00
7,200.0	0.00	0.00	6,920.1	-1,592.4	-501.8	1,669.6	0.00	0.00	0.00
7,200.9	0.00	0.00	6,921.0	-1,592.4	-501.8	1,669.6	0.00	0.00	0.00
FORT HAYES									
7,222.9	0.00	0.00	6,943.0	-1,592.4	-501.8	1,669.6	0.00	0.00	0.00
CODELL									
7,240.0	0.00	0.00	6,960.1	-1,592.4	-501.8	1,669.6	0.00	0.00	0.00
7,272.9	0.00	0.00	6,993.0	-1,592.4	-501.8	1,669.6	0.00	0.00	0.00
GREENHORN									
7,280.0	0.00	0.00	7,000.1	-1,592.4	-501.8	1,669.6	0.00	0.00	0.00
7,320.0	0.00	0.00	7,040.1	-1,592.4	-501.8	1,669.6	0.00	0.00	0.00
7,360.0	0.00	0.00	7,080.1	-1,592.4	-501.8	1,669.6	0.00	0.00	0.00
7,360.9	0.00	0.00	7,081.0	-1,592.4	-501.8	1,669.6	0.00	0.00	0.00
GRANEROS									
7,379.9	0.00	0.00	7,100.0	-1,592.4	-501.8	1,669.6	0.00	0.00	0.00

Database:	Landmark	Local Co-ordinate Reference:	Well River Bluffs 10-13
Company:	BAYSWATER EXPLORATION & PRODUCTION	TVD Reference:	WELL @ 4818.0ft (Original Well Elev)
Project:	SEC.13-T6N-R68W	MD Reference:	WELL @ 4818.0ft (Original Well Elev)
Site:	River Bluffs 10-13 Pad Sec.13-T6N-R68W	North Reference:	True
Well:	River Bluffs 10-13	Survey Calculation Method:	Minimum Curvature
Wellbore:	Wellbore #1		
Design:	Plan #1 (6-28-12)		

Casing Points

Measured Depth (ft)	Vertical Depth (ft)	Name	Casing Diameter (")	Hole Diameter (")
720.7	720.0	8 5/8"	8-5/8	12-1/4

Formations

Measured Depth (ft)	Vertical Depth (ft)	Name	Lithology	Dip (°)	Dip Direction (°)
3,261.1	3,123.0	PARKMAN		0.00	
4,024.5	3,838.0	SUSSEX		0.00	
4,440.9	4,228.0	SHANNON		0.00	
6,887.9	6,608.0	NIOBRARA		0.00	
7,200.9	6,921.0	FORT HAYES		0.00	
7,222.9	6,943.0	CODELL		0.00	
7,272.9	6,993.0	GREENHORN		0.00	
7,360.9	7,081.0	GRANEROS		0.00	



Directional

BAYSWATER EXPLORATION & PRODUCTION

SEC.13-T6N-R68W

River Bluffs 10-13 Pad Sec.13-T6N-R68W

River Bluffs 10-13

Wellbore #1

Plan #1 (6-28-12)

Anticollision Report

03 July, 2012

Company:	BAYSWATER EXPLORATION & PRODUCTION	Local Co-ordinate Reference:	Well River Bluffs 10-13
Project:	SEC.13-T6N-R68W	TVD Reference:	WELL @ 4818.0ft (Original Well Elev)
Reference Site:	River Bluffs 10-13 Pad Sec.13-T6N-R68W	MD Reference:	WELL @ 4818.0ft (Original Well Elev)
Site Error:	0.0ft	North Reference:	True
Reference Well:	River Bluffs 10-13	Survey Calculation Method:	Minimum Curvature
Well Error:	0.0ft	Output errors are at	2.00 sigma
Reference Wellbore	Wellbore #1	Database:	Landmark
Reference Design:	Plan #1 (6-28-12)	Offset TVD Reference:	Offset Datum

Reference	Plan #1 (6-28-12)		
Filter type:	NO GLOBAL FILTER: Using user defined selection & filtering criteria		
Interpolation Method:	Stations	Error Model:	ISCWSA
Depth Range:	Unlimited	Scan Method:	Closest Approach 3D
Results Limited by:	Maximum center-center distance of 10,000.0ft	Error Surface:	Elliptical Conic
Warning Levels Evaluated at:	2.00 Sigma		

Survey Tool Program	Date 6/28/2012			
From (ft)	To (ft)	Survey (Wellbore)	Tool Name	Description
0.0	7,379.9	Plan #1 (6-28-12) (Wellbore #1)	MWD	MWD - Standard

Summary						
Site Name	Reference Measured Depth (ft)	Offset Measured Depth (ft)	Distance Between Centres (ft)	Between Ellipses (ft)	Separation Factor	Warning
Offset Well - Wellbore - Design						
River Bluffs 10-13 Pad Sec.13-T6N-R68W						
River Bluffs 18-13 - Wellbore #1 - Plan #1 (6-28-12)	200.0	200.0	16.0	15.4	23.779	CC
River Bluffs 18-13 - Wellbore #1 - Plan #1 (6-28-12)	300.0	299.9	16.4	15.3	14.718	ES
River Bluffs 18-13 - Wellbore #1 - Plan #1 (6-28-12)	400.0	399.5	18.6	17.0	11.841	SF

Offset Design												
River Bluffs 10-13 Pad Sec.13-T6N-R68W - River Bluffs 18-13 - Wellbore #1 - Plan #1 (6-28-12)												
Survey Program: 0-MWD												
Reference		Offset		Semi Major Axis			Distance					
Measured Depth (ft)	Vertical Depth (ft)	Measured Depth (ft)	Vertical Depth (ft)	Reference (ft)	Offset (ft)	Highside Toolface (°)	Offset Wellbore Centre +N/-S (ft)	+E/-W (ft)	Between Centres (ft)	Between Ellipses (ft)	Minimum Separation (ft)	Separation Factor
0.0	0.0	0.0	0.0	0.0	0.0	0.00	16.0	0.0	16.0	16.0	0.00	N/A
100.0	100.0	100.0	100.0	0.1	0.1	0.00	16.0	0.0	16.0	15.8	0.22	71.337
200.0	200.0	200.0	200.0	0.3	0.3	0.00	16.0	0.0	16.0	15.4	0.67	23.779 CC
300.0	300.0	299.9	299.8	0.6	0.6	-5.99	16.3	-1.7	16.4	15.3	1.12	14.718 ES
400.0	400.0	399.5	399.3	0.8	0.8	-21.64	17.2	-6.8	18.6	17.0	1.57	11.841 SF
500.0	500.0	498.6	498.1	1.0	1.0	126.41	18.7	-15.3	25.3	23.2	2.02	12.529
600.0	599.8	597.0	595.7	1.2	1.3	119.78	20.8	-27.1	37.3	34.8	2.47	15.112
700.0	699.5	694.4	691.9	1.4	1.6	117.52	23.4	-41.9	54.0	51.0	2.96	18.215
800.0	798.7	790.4	786.2	1.7	2.0	117.05	26.5	-59.7	74.9	71.4	3.51	21.365
900.0	897.5	884.8	878.3	2.0	2.4	117.26	30.1	-80.2	100.0	95.9	4.11	24.353
1,000.0	995.6	977.5	968.0	2.3	2.9	117.66	34.2	-103.3	129.3	124.5	4.77	27.083
1,100.0	1,093.1	1,068.1	1,054.9	2.7	3.4	118.07	38.6	-128.6	162.5	157.0	5.50	29.527
1,200.0	1,189.6	1,156.5	1,138.8	3.2	4.0	118.41	43.4	-155.8	199.6	193.3	6.30	31.695
1,300.0	1,285.3	1,242.6	1,219.7	3.8	4.5	118.65	48.5	-184.8	240.5	233.4	7.16	33.606
1,400.0	1,379.8	1,326.2	1,297.4	4.4	5.2	118.78	53.9	-215.2	285.1	277.0	8.08	35.286
1,425.4	1,403.7	1,347.1	1,316.7	4.5	5.3	118.79	55.2	-223.2	296.9	288.6	8.32	35.671
1,500.0	1,473.5	1,407.5	1,372.1	5.0	5.8	119.36	59.4	-246.9	332.7	323.6	9.07	36.682
1,600.0	1,567.2	1,487.0	1,444.1	5.7	6.5	119.73	65.2	-280.0	382.2	372.1	10.10	37.845
1,700.0	1,660.8	1,567.1	1,515.8	6.4	7.3	119.80	71.4	-315.1	433.4	422.2	11.16	38.830
1,800.0	1,754.5	1,652.7	1,592.2	7.0	8.1	119.81	78.1	-353.2	485.0	472.7	12.27	39.540
1,900.0	1,848.2	1,738.3	1,668.6	7.7	8.9	119.81	84.8	-391.3	536.7	523.3	13.38	40.105
2,000.0	1,941.8	1,824.0	1,745.0	8.4	9.8	119.82	91.5	-429.4	588.3	573.8	14.51	40.556
2,100.0	2,035.5	1,909.6	1,821.4	9.1	10.6	119.82	98.2	-467.5	639.9	624.3	15.64	40.922

CC - Min centre to center distance or convergent point, SF - min separation factor, ES - min ellipse separation

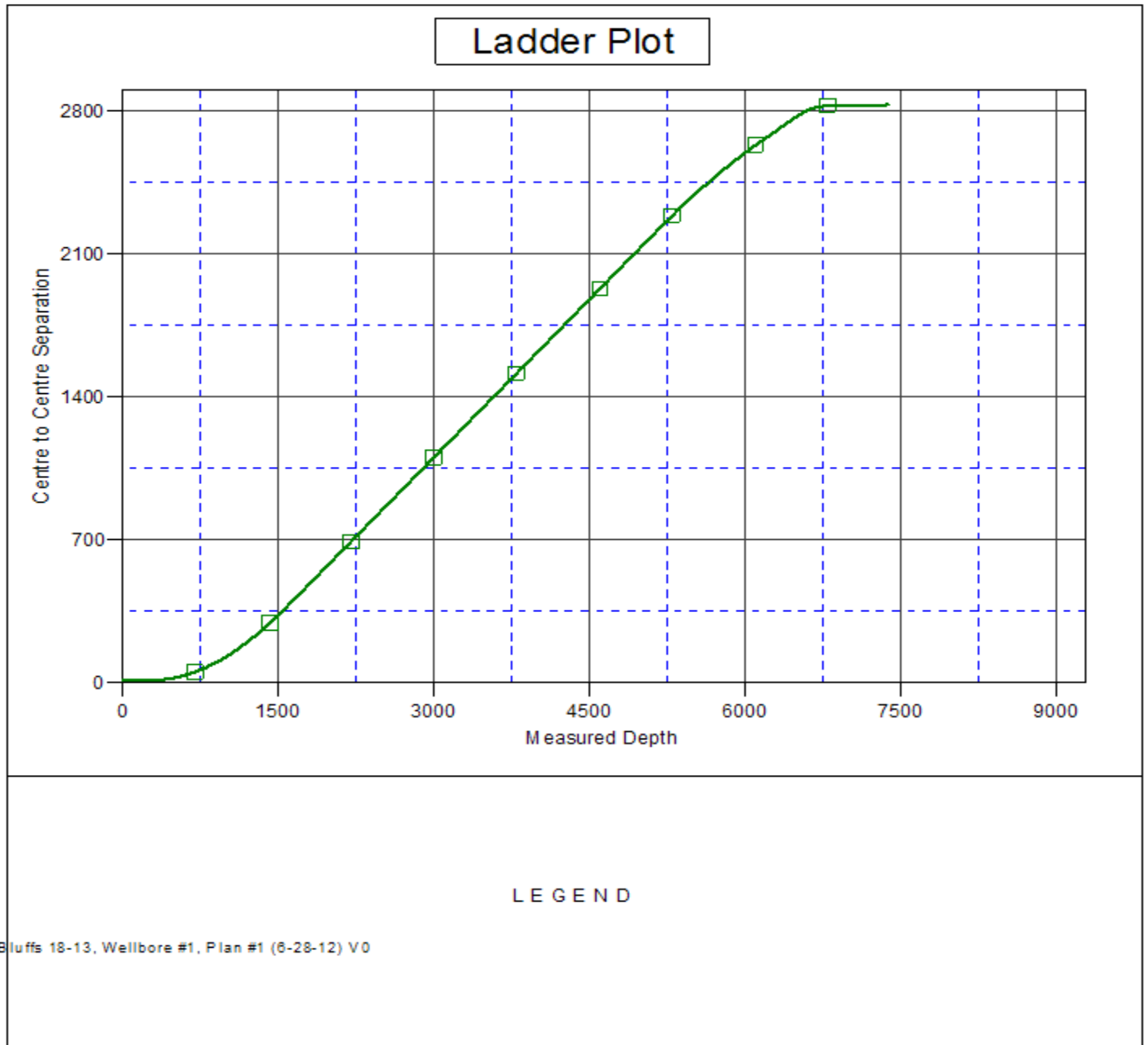
River Bluffs 10-13 Pad Sec.13-T6N-R68W - River Bluffs 18-13 - Wellbore #1 - Plan #1 (6-28-12)												Offset Site Error:	0.0 ft
Survey Program: 0-MWD												Offset Well Error:	0.0 ft
Reference		Offset		Semi Major Axis			Distance						Warning
Measured Depth	Vertical Depth	Measured Depth	Vertical Depth	Reference	Offset	Highside Toolface	Offset Wellbore Centre		Between Centres	Between Ellipses	Minimum Separation	Separation Factor	
(ft)	(ft)	(ft)	(ft)	(ft)	(ft)	(°)	+N/-S (ft)	+E/-W (ft)	(ft)	(ft)	(ft)		
2,200.0	2,129.1	1,995.2	1,897.8		9.8	11.4	119.82	104.9	-505.6	691.6	674.8	16.78	41.224
2,300.0	2,222.8	2,080.9	1,974.2		10.5	12.3	119.83	111.6	-543.7	743.2	725.3	17.92	41.475
2,400.0	2,316.5	2,166.5	2,050.6		11.2	13.1	119.83	118.3	-581.9	794.9	775.8	19.07	41.688
2,500.0	2,410.1	2,252.1	2,127.0		11.9	14.0	119.83	125.0	-620.0	846.5	826.3	20.22	41.870
2,600.0	2,503.8	2,337.8	2,203.4		12.6	14.8	119.83	131.7	-658.1	898.2	876.8	21.37	42.027
2,700.0	2,597.5	2,423.4	2,279.8		13.3	15.6	119.83	138.4	-696.2	949.8	927.3	22.53	42.163
2,800.0	2,691.1	2,509.0	2,356.2		14.0	16.5	119.83	145.0	-734.3	1,001.5	977.8	23.69	42.282
2,900.0	2,784.8	2,594.7	2,432.6		14.7	17.3	119.84	151.7	-772.4	1,053.1	1,028.3	24.84	42.388
3,000.0	2,878.4	2,680.3	2,508.9		15.4	18.2	119.84	158.4	-810.5	1,104.8	1,078.8	26.01	42.481
3,100.0	2,972.1	2,765.9	2,585.3		16.1	19.0	119.84	165.1	-848.6	1,156.4	1,129.2	27.17	42.564
3,200.0	3,065.8	2,851.5	2,661.7		16.8	19.9	119.84	171.8	-886.7	1,208.0	1,179.7	28.33	42.639
3,300.0	3,159.4	2,937.2	2,738.1		17.5	20.7	119.84	178.5	-924.8	1,259.7	1,230.2	29.50	42.706
3,400.0	3,253.1	3,022.8	2,814.5		18.2	21.6	119.84	185.2	-962.9	1,311.3	1,280.7	30.66	42.767
3,500.0	3,346.8	3,108.4	2,890.9		18.9	22.4	119.84	191.9	-1,001.0	1,363.0	1,331.2	31.83	42.822
3,600.0	3,440.4	3,194.1	2,967.3		19.6	23.3	119.84	198.6	-1,039.1	1,414.6	1,381.6	33.00	42.872
3,700.0	3,534.1	3,279.7	3,043.7		20.3	24.1	119.84	205.3	-1,077.2	1,466.3	1,432.1	34.16	42.918
3,800.0	3,627.7	3,365.3	3,120.1		21.0	25.0	119.84	212.0	-1,115.3	1,517.9	1,482.6	35.33	42.961
3,900.0	3,721.4	3,451.0	3,196.5		21.7	25.8	119.84	218.7	-1,153.4	1,569.6	1,533.1	36.50	42.999
4,000.0	3,815.1	3,536.6	3,272.9		22.4	26.7	119.84	225.4	-1,191.5	1,621.2	1,583.5	37.67	43.035
4,100.0	3,908.7	3,622.2	3,349.3		23.1	27.6	119.84	232.1	-1,229.6	1,672.9	1,634.0	38.84	43.068
4,200.0	4,002.4	3,707.9	3,425.7		23.8	28.4	119.84	238.8	-1,267.7	1,724.5	1,684.5	40.01	43.099
4,300.0	4,096.0	3,793.5	3,502.1		24.5	29.3	119.85	245.5	-1,305.8	1,776.2	1,735.0	41.18	43.128
4,400.0	4,189.7	3,879.1	3,578.5		25.2	30.1	119.85	252.2	-1,343.9	1,827.8	1,785.4	42.35	43.154
4,500.0	4,283.4	3,964.8	3,654.8		25.9	31.0	119.85	258.9	-1,382.0	1,879.4	1,835.9	43.53	43.179
4,600.0	4,377.0	4,050.4	3,731.2		26.6	31.8	119.85	265.6	-1,420.1	1,931.1	1,886.4	44.70	43.202
4,700.0	4,470.7	4,136.0	3,807.6		27.3	32.7	119.85	272.2	-1,458.2	1,982.7	1,936.9	45.87	43.224
4,800.0	4,564.4	4,221.6	3,884.0		28.0	33.5	119.85	278.9	-1,496.3	2,034.4	1,987.3	47.04	43.244
4,900.0	4,658.0	4,307.3	3,960.4		28.8	34.4	119.85	285.6	-1,534.4	2,086.0	2,037.8	48.22	43.263
5,000.0	4,751.7	4,392.9	4,036.8		29.5	35.2	119.85	292.3	-1,572.5	2,137.7	2,088.3	49.39	43.281
5,100.0	4,845.3	4,478.5	4,113.2		30.2	36.1	119.85	299.0	-1,610.7	2,189.3	2,138.8	50.56	43.298
5,154.4	4,896.3	4,525.1	4,154.8		30.5	36.5	119.85	302.7	-1,631.4	2,217.4	2,166.2	51.20	43.307
5,200.0	4,939.1	4,564.3	4,189.7		30.8	36.9	120.31	305.7	-1,648.8	2,240.8	2,188.9	51.87	43.198
5,300.0	5,033.9	4,650.7	4,266.8		31.3	37.8	121.22	312.5	-1,687.3	2,291.0	2,237.8	53.23	43.043
5,400.0	5,129.7	4,737.9	4,344.6		31.7	38.7	122.01	319.3	-1,726.1	2,339.6	2,285.1	54.54	42.901
5,500.0	5,226.5	4,825.7	4,422.9		32.1	39.5	122.67	326.2	-1,765.1	2,386.7	2,330.9	55.80	42.775
5,600.0	5,324.1	4,914.0	4,501.7		32.4	40.4	123.22	333.1	-1,804.4	2,432.1	2,375.1	57.00	42.667
5,700.0	5,422.4	5,002.8	4,580.9		32.7	41.3	123.67	340.0	-1,843.9	2,475.8	2,417.7	58.15	42.580
5,800.0	5,521.2	5,091.9	4,660.4		33.0	42.2	124.02	347.0	-1,883.6	2,517.9	2,458.7	59.22	42.515
5,900.0	5,620.6	5,181.2	4,740.1		33.2	43.1	124.28	354.0	-1,923.3	2,558.4	2,498.2	60.23	42.475
6,000.0	5,720.3	5,270.6	4,819.8		33.4	44.0	124.45	361.0	-1,963.1	2,597.2	2,536.1	61.17	42.462
6,100.0	5,820.1	5,360.0	4,899.6		33.5	44.9	124.54	367.9	-2,002.9	2,634.5	2,572.4	62.02	42.476
6,179.9	5,900.0	5,431.3	4,963.2		33.5	45.6	-37.94	373.5	-2,034.6	2,663.1	2,600.4	62.66	42.503
6,200.0	5,920.1	5,449.3	4,979.2		33.6	45.8	-38.07	374.9	-2,042.6	2,670.2	2,607.4	62.77	42.536
6,300.0	6,020.1	5,538.5	5,058.8		33.6	46.7	-38.68	381.9	-2,082.3	2,705.5	2,642.2	63.35	42.709
6,400.0	6,120.1	5,627.7	5,138.4		33.7	47.5	-39.27	388.9	-2,122.0	2,741.2	2,677.3	63.91	42.891
6,500.0	6,220.1	5,764.1	5,260.3		33.8	48.8	-40.15	399.4	-2,182.1	2,777.0	2,712.4	64.66	42.948
6,600.0	6,320.1	6,188.9	5,655.5		33.8	51.6	-42.24	426.2	-2,334.6	2,806.3	2,740.3	66.06	42.485
6,700.0	6,420.1	6,656.1	6,111.2		33.9	53.3	-43.50	443.7	-2,433.9	2,823.8	2,756.8	66.99	42.153
6,800.0	6,520.1	7,066.2	6,520.1		34.0	53.9	-43.82	448.2	-2,460.0	2,828.2	2,760.7	67.46	41.921
6,900.0	6,620.1	7,166.2	6,620.1		34.1	54.0	-43.82	448.2	-2,460.0	2,828.2	2,760.5	67.63	41.821
7,000.0	6,720.1	7,266.2	6,720.1		34.1	54.0	-43.82	448.2	-2,460.0	2,828.2	2,760.4	67.79	41.720

Company:	BAYSWATER EXPLORATION & PRODUCTION	Local Co-ordinate Reference:	Well River Bluffs 10-13
Project:	SEC.13-T6N-R68W	TVD Reference:	WELL @ 4818.0ft (Original Well Elev)
Reference Site:	River Bluffs 10-13 Pad Sec.13-T6N-R68W	MD Reference:	WELL @ 4818.0ft (Original Well Elev)
Site Error:	0.0ft	North Reference:	True
Reference Well:	River Bluffs 10-13	Survey Calculation Method:	Minimum Curvature
Well Error:	0.0ft	Output errors are at	2.00 sigma
Reference Wellbore	Wellbore #1	Database:	Landmark
Reference Design:	Plan #1 (6-28-12)	Offset TVD Reference:	Offset Datum

Offset Design												River Bluffs 10-13 Pad Sec.13-T6N-R68W - River Bluffs 18-13 - Wellbore #1 - Plan #1 (6-28-12)		Offset Site Error:		0.0 ft	
Survey Program:												0-MWD		Offset Well Error:		0.0 ft	
Reference		Offset		Semi Major Axis			Distance										
Measured Depth	Vertical Depth	Measured Depth	Vertical Depth	Reference	Offset	Highside Toolface	Offset Wellbore Centre		Between Centres	Between Ellipses	Minimum Separation	Separation Factor	Warning				
(ft)	(ft)	(ft)	(ft)	(ft)	(ft)	(°)	+N/-S (ft)	+E/-W (ft)	(ft)	(ft)	(ft)						
7,100.0	6,820.1	7,366.2	6,820.1	34.2	54.1	-43.82	448.2	-2,460.0	2,828.2	2,760.2	67.96	41.617					
7,166.6	6,886.8	7,432.8	6,886.8	34.3	54.1	-43.82	448.2	-2,460.0	2,828.2	2,760.1	68.07	41.548					
7,200.0	6,920.1	7,466.1	6,920.0	34.3	54.1	-43.82	448.2	-2,460.0	2,828.2	2,760.0	68.13	41.514					
7,300.0	7,020.1	7,466.1	6,920.0	34.4	54.1	-43.82	448.2	-2,460.0	2,829.9	2,761.7	68.21	41.486					
7,379.9	7,100.0	7,466.1	6,920.0	34.4	54.1	-43.82	448.2	-2,460.0	2,833.9	2,765.6	68.29	41.500					

Company:	BAYSWATER EXPLORATION & PRODUCTION	Local Co-ordinate Reference:	Well River Bluffs 10-13
Project:	SEC.13-T6N-R68W	TVD Reference:	WELL @ 4818.0ft (Original Well Elev)
Reference Site:	River Bluffs 10-13 Pad Sec.13-T6N-R68W	MD Reference:	WELL @ 4818.0ft (Original Well Elev)
Site Error:	0.0ft	North Reference:	True
Reference Well:	River Bluffs 10-13	Survey Calculation Method:	Minimum Curvature
Well Error:	0.0ft	Output errors are at	2.00 sigma
Reference Wellbore	Wellbore #1	Database:	Landmark
Reference Design:	Plan #1 (6-28-12)	Offset TVD Reference:	Offset Datum

Reference Depths are relative to WELL @ 4818.0ft (Original Well Elev) Coordinates are relative to: River Bluffs 10-13
Offset Depths are relative to Offset Datum Coordinate System is US State Plane 1983, Colorado Northern Zone
Central Meridian is -105.500000 ° Grid Convergence at Surface is: 0.36°



Company:	BAYSWATER EXPLORATION & PRODUCTION	Local Co-ordinate Reference:	Well River Bluffs 10-13
Project:	SEC.13-T6N-R68W	TVD Reference:	WELL @ 4818.0ft (Original Well Elev)
Reference Site:	River Bluffs 10-13 Pad Sec.13-T6N-R68W	MD Reference:	WELL @ 4818.0ft (Original Well Elev)
Site Error:	0.0ft	North Reference:	True
Reference Well:	River Bluffs 10-13	Survey Calculation Method:	Minimum Curvature
Well Error:	0.0ft	Output errors are at	2.00 sigma
Reference Wellbore	Wellbore #1	Database:	Landmark
Reference Design:	Plan #1 (6-28-12)	Offset TVD Reference:	Offset Datum

Reference Depths are relative to WELL @ 4818.0ft (Original Well Elev) Coordinates are relative to: River Bluffs 10-13
Offset Depths are relative to Offset Datum Coordinate System is US State Plane 1983, Colorado Northern Zone
Central Meridian is -105.500000 ° Grid Convergence at Surface is: 0.36°

