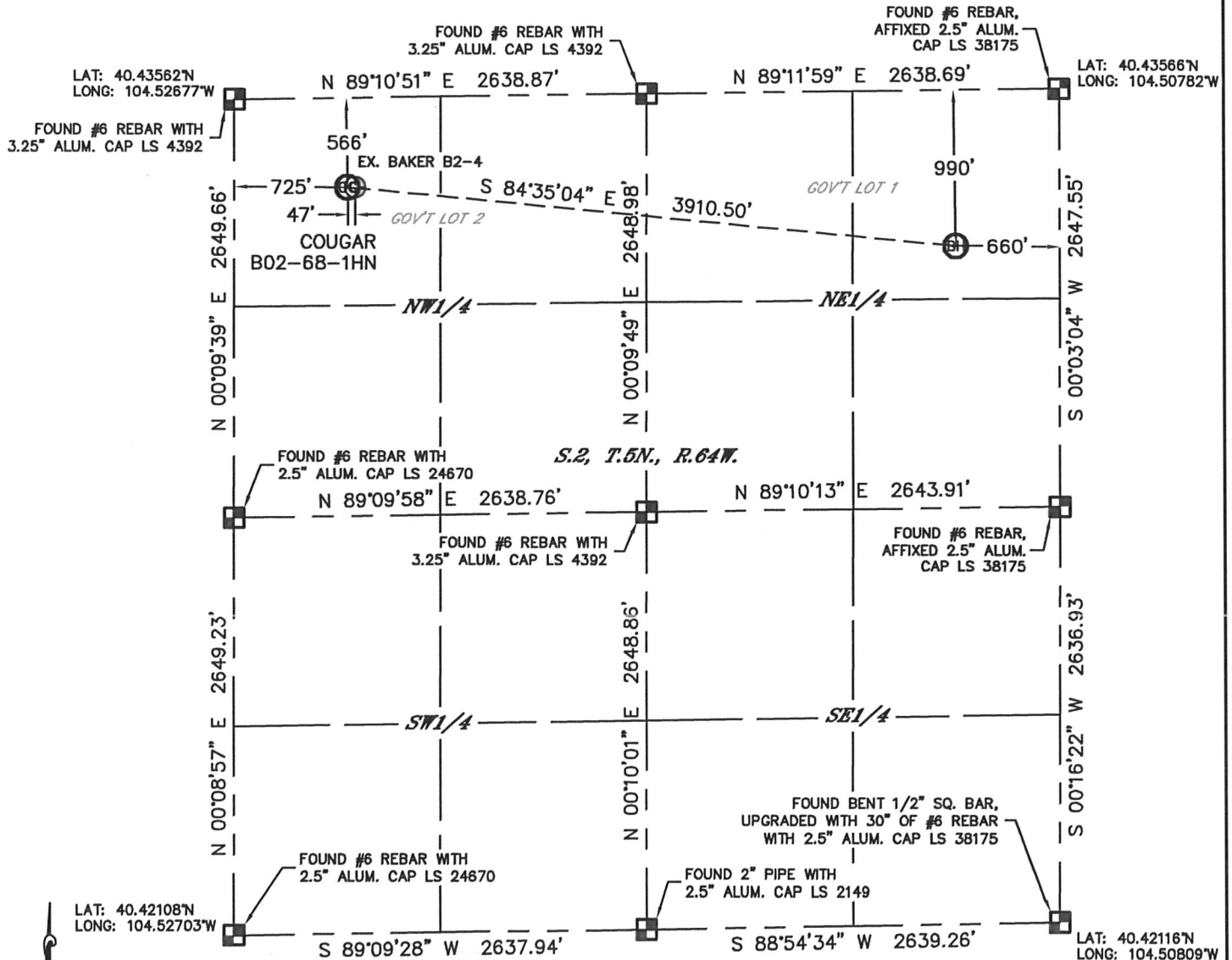


WELL LOCATION CERTIFICATE

THIS MAP DOES NOT REPRESENT A BOUNDARY SURVEY

SECTION: 2
TOWNSHIP: 5N
RANGE: 64W



In accordance with a request from Mike Rodine with Noble Energy Inc., Lat40°, Inc. has determined the surface location of the COUGAR B02-68-1HN to be 566' from the NORTH line and 725' from the WEST line and the bottom hole to be 990' from the NORTH line and 660' from the EAST line as measured at right angles from the section lines of Section 2, Township 5 North, Range 64 West of the Sixth Principal Meridian, County of Weld, State of Colorado.

I hereby state that this Well Location Certificate was prepared by me, or under my direct supervision, that the fieldwork was completed on 5/23/2012, for and on behalf of Noble Energy Inc. That this is not a Land Survey Plat or an Improvement Survey Plat, and that it is not to be relied upon for establishment of fence, building, or other future Improvement lines.

NOTE:

- 1) Bearings shown are Grid Bearings of the Colorado State Plane Coordinate System, North Zone, North American Datum 1983/2007. The lineal dimensions as contained herein are based upon the "U.S. Survey Foot."
- 2) Ground elevations are based on an observed GPS elevation (NAVD 1988 DATUM).
- 3) NEAREST EXISTING WELL: BAKER B2-4, 47'
- 4) IMPROVEMENTS: See LOCATION DRAWING for all visible Improvements within 400' of disturbed area.
- 5) SURFACE USE: CROP LAND
- 6) INSTRUMENT OPERATOR: WYATT HALL

NOTE

According to Colorado law, you must commence any legal action based upon any defect in this W.L.C. within three years after you discover such defect. In no event, may any action based upon any defect in this survey be commenced more than ten years after the date of the certificate shown hereon. (13-80-105 C.R.S.)

LEGEND

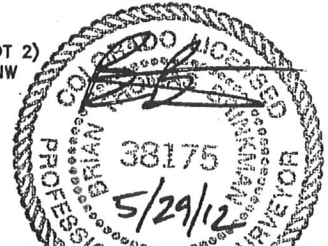
- = ALIQUOT MONUMENT AS DESCRIBED
- = CALCULATED POSITION

SURFACE LOCATION

LAT: 40.43407°N
LONG: 104.52420°W
PDOP: 1.8
ELEV: 4640'
1/4,1/4: NW1/4NW1/4 (GOV'T LOT 2)
NEAREST PROPERTY LINE: 274' NW

BOTTOM HOLE

LAT: 40.43294°N
LONG: 104.51023°W



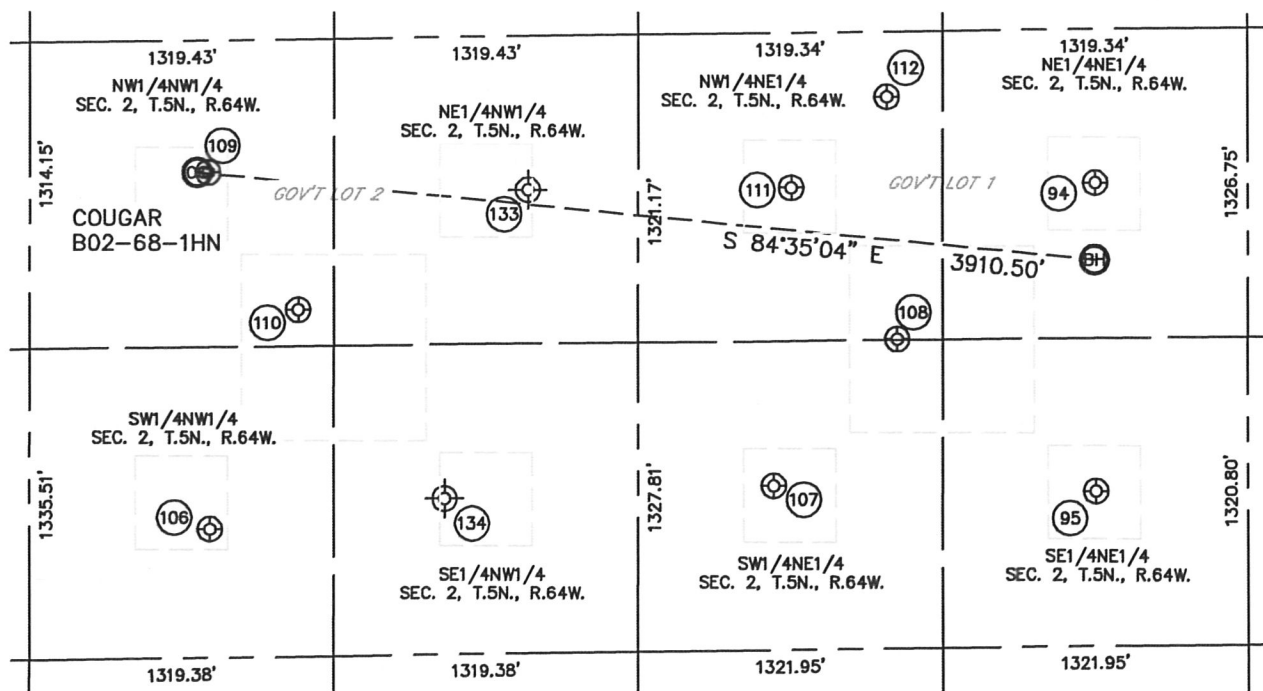
Brian T. Brinkman—On Behalf of Lat40°, Inc.
Colorado Licensed Professional Land Surveyor No. 38175
DATE: Rev 5/24/12
PROJECT#: 2012029

Lat40°, Inc. 1635 Foxtrail Drive, Suite 325 Loveland, CO 970-776-3321

SITE SKETCH

COUGAR B02-68-1HN

SECTION: 2
TOWNSHIP: 5N
RANGE: 64W



94

MEYER B2-1
NE1/4NE1/4
660' FNL
657' FEL
LAT-40.43384°N
LONG-104.51021°W
PDOP: 1.2
ELEV: 4608'

95

MEYER B2-8
SE1/4NE1/4
1983' FNL
656' FEL
LAT-40.43021°N
LONG-104.51026°W
PDOP: 2.3
ELEV: 4607'

106

BAKER B2-5
SW1/4NW1/4
2097' FNL
781' FWL
LAT-40.42987°N
LONG-104.52407°W
PDOP: 1.9
ELEV: 4639'

107

FOE B2-7
SW1/4NE1/4
1942' FNL
2053' FEL
LAT-40.43031°N
LONG-104.51528°W
PDOP: 1.9
ELEV: 4611'

108

FOEMEYER B2-17
NW1/4NE1/4
1320' FNL
1517' FEL
LAT-40.43203°N
LONG-104.51333°W
PDOP: 1.4
ELEV: 4614'

109

BAKER B2-4
NW1/4NW1/4
567' FNL
772' FWL
LAT-40.43407°N
LONG-104.52403°W
PDOP: 1.4
ELEV: 4638'

110

FRITZLER B02-19
NW1/4NW1/4
1161' FNL
1164' FWL
LAT-40.43244°N
LONG-104.52265°W
PDOP: 1.1
ELEV: 4629'

111

FOE B2-2
NW1/4NE1/4
665' FNL
1976' FEL
LAT-40.43382°N
LONG-104.51494°W
PDOP: 1.6
ELEV: 4612'

112

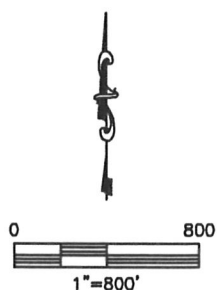
FOE A35-73HN
NW1/4NE1/4
280' FNL
1561' FEL
LAT-40.43488°N
LONG-104.51344°W
PDOP: 1.1
ELEV: 4611'

133

FRITZLER B2-3
(Plugged & Abandoned)
NE1/4NW1/4
660' FNL (COGCC)
2160' FNL (COGCC)
LAT-40.433805°N (COGCC)
LONG-104.519204°W (COGCC)
PDOP: N/A
ELEV: 4612' (COGCC)

134

FRITZLER B2-6
(Plugged & Abandoned)
SE1/4NW1/4
1980' FNL (COGCC)
1800' FNL (COGCC)
LAT-40.430175°N (COGCC)
LONG-104.520544°W (COGCC)
PDOP: N/A
ELEV: 4617' (COGCC)



DATE: Rev 5/24/12
PROJECT#: 2012029