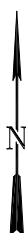


LEGEND

- PROPOSED WELL PAD
- PROPOSED ACCESS ROAD
- EXISTING ROAD



Wasatch Surveying Associates
 906 Main Street Evanston, Wyoming 82930
 Phone No. (307) 789-4545 Fax 307-789-5722



Encana Oil & Gas (USA) Inc.

O19EB PAD ACCESS
 SECTION 19, T7S, R92W, 6th, P.M.
 GARFIELD COUNTY, COLORADO

TOPO A

PROJECT NUMBER
 10-04-49
 DATE: 5/30/12
 SCALE: 1:100,000

8
 of 10

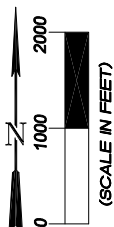
LEGEND



PROPOSED WELL PAD
PROPOSED ACCESS ROAD
EXISTING ROAD



Wasatch Surveying Associates
906 Main Street Evanston, Wyoming 82930
Phone No. (307) 789-4545 Fax 307-789-5722

**Encana Oil & Gas (USA) Inc.**

O19EB PAD ACCESS
SECTION 19, T7S, R92W, 6th, P.M.
GARFIELD COUNTY, COLORADO

TOPO B

PROJECT NUMBER 10-04-49
DATE: 9/13/12
SCALE: 1" = 2000'

9
of 14