

The Road to Excellence Starts with Safety

Sold To #: 300721	Ship To #: 2900632	Quote #:	Sales Order #: 9214200
Customer: WPX ENERGY ROCKY MOUNTAIN LLC-EBUS	Customer Rep: BASCOM, BRENT		
Well Name: RWF	Well #: 41-31	API/UWI #:	
Field: Rulison	City (SAP): RIFLE	County/Parish: Garfield	State: Colorado
Lat: N 39.486 deg. OR N 39 deg. 29 min. 8.596 secs.	Long: W 107.916 deg. OR W -108 deg. 5 min. 3.026 secs.		
Contractor: CYCLONE 17	Rig/Platform Name/Num: CYCLONE 17		
Job Purpose: Cement Surface Casing			
Well Type: Development Well	Job Type: Cement Surface Casing		
Sales Person: MAYO, MARK	Srv Supervisor: SLAUGHTER, JESSE	MBU ID Emp #:	454315

Job Personnel

HES Emp Name	Exp Hrs	Emp #	HES Emp Name	Exp Hrs	Emp #	HES Emp Name	Exp Hrs	Emp #
DOUT, JACOB J	8.5	430298	KUKUS, CARLTON Dean	8.5	458577	SLAUGHTER, JESSE Dean	8.5	454315

Equipment

HES Unit #	Distance-1 way	HES Unit #	Distance-1 way	HES Unit #	Distance-1 way	HES Unit #	Distance-1 way
10616651C	60 mile	11021972	60 mile	11027039	60 mile	11583931	60 mile
11808827	60 mile						

Job Hours

Date	On Location Hours	Operating Hours	Date	On Location Hours	Operating Hours	Date	On Location Hours	Operating Hours
02-02-2012	.5		02-03-2012	8	3.5			
TOTAL			Total is the sum of each column separately					

Job

Job Times

Formation Name	Formation Depth (MD)	Top	Bottom	Called Out	Date	Time	Time Zone
Form Type			BHST	On Location	02 - Feb - 2012	23:30	MST
Job depth MD	1123. ft		Job Depth TVD	Job Started	03 - Feb - 2012	05:15	MST
Water Depth			Wk Ht Above Floor	Job Completed	03 - Feb - 2012	06:14	MST
Perforation Depth (MD)	From		To	Departed Loc	03 - Feb - 2012	08:00	MST

Well Data

Description	New / Used	Max pressure psig	Size in	ID in	Weight lbm/ft	Thread	Grade	Top MD ft	Bottom MD ft	Top TVD ft	Bottom TVD ft
OPEN HOLE				13.5				.	1132.		
SURFACE CASING	Unknown		9.625	9.001	32.3			.	1123.		

Sales/Rental/3rd Party (HES)

Description	Qty	Qty uom	Depth	Supplier
PLUG,CMTG,TOP,9 5/8,HWE,8.16 MIN/9.06 MA	1	EA		

Tools and Accessories

Type	Size	Qty	Make	Depth	Type	Size	Qty	Make	Depth	Type	Size	Qty	Make
Guide Shoe					Packer					Top Plug	9.625	1	HES
Float Shoe					Bridge Plug					Bottom Plug			
Float Collar					Retainer					SSR plug set			
Insert Float										Plug Container	9.625	1	HES
Stage Tool										Centralizers			

Miscellaneous Materials

Gelling Agt	Conc	Surfactant	Conc	Acid Type	Qty	Conc	%
Treatment Fld	Conc	Inhibitor	Conc	Sand Type	Size	Qty	

Fluid Data

Stage/Plug #: 1	Fluid #	Stage Type	Fluid Name	Qty	Qty uom	Mixing Density lbm/gal	Yield ft ³ /sk	Mix Fluid Gal/sk	Rate bbl/min	Total Mix Fluid Gal/sk
-----------------	---------	------------	------------	-----	---------	------------------------	---------------------------	------------------	--------------	------------------------

1	Fresh Water	FRESH WATER	20.00	bbl	8.33	.0	.0	4	
2	VersaCem Lead	VERSACEM (TM) SYSTEM (452010)	160.0	sacks	12.3	2.37	13.71	6	13.71
	13.71 Gal	FRESH WATER							
3	VersaCem Tail	VERSACEM (TM) SYSTEM (452010)	160.0	sacks	12.8	2.11	11.72	6	11.72
	11.72 Gal	FRESH WATER							
4	Displacement Fluid	FRESH WATER	85.00	bbl	8.34	.0	.0	10	
Calculated Values		Pressures		Volumes					
Displacement	85	Shut In: Instant		Lost Returns	NO	Cement Slurry	128	Pad	
Top Of Cement	SURFACE	5 Min		Cement Returns	45	Actual Displacement	85	Treatment	
Frac Gradient		15 Min		Spacers	20	Load and Breakdown		Total Job	233
Rates									
Circulating		Mixing	6	Displacement	10	Avg. Job	8		
Cement Left In Pipe	Amount	42.5 ft	Reason	Shoe Joint					
Frac Ring # 1 @	ID	Frac ring # 2 @	ID	Frac Ring # 3 @	ID	Frac Ring # 4 @	ID		
The Information Stated Herein Is Correct				Customer Representative Signature					

The Road to Excellence Starts with Safety

Sold To #: 300721	Ship To #: 2900632	Quote #:	Sales Order #: 9214200
Customer: WPX ENERGY ROCKY MOUNTAIN LLC-EBUS	Customer Rep: BASCOM, BRENT		
Well Name: RWF	Well #: 41-31	API/UWI #:	
Field: Rulison	City (SAP): RIFLE	County/Parish: Garfield	State: Colorado
Legal Description:			
Lat: N 39.486 deg. OR N 39 deg. 29 min. 8.596 secs.		Long: W 107.916 deg. OR W -108 deg. 5 min. 3.026 secs.	
Contractor: CYCLONE 17	Rig/Platform Name/Num: CYCLONE 17		
Job Purpose: Cement Surface Casing	Ticket Amount:		
Well Type: Development Well	Job Type: Cement Surface Casing		
Sales Person: MAYO, MARK	Srv Supervisor: SLAUGHTER, JESSE	MBU ID Emp #: 454315	

Activity Description	Date/Time	Cht #	Rate bbl/min	Volume bbl		Pressure psig		Comments
				Stage	Total	Tubing	Casing	
Call Out	02/02/2012 20:00							TD 1132 FT, TP 1123 FT, SHOE 42.5 FT, CSG 9 5/8 IN 32.3 LB/FT, HOLE 13 1/2 IN, MUD WT 10.5 PPG
Pre-Convoy Safety Meeting	02/02/2012 21:50							WITH ALL HES PERSONNEL
Crew Leave Yard	02/02/2012 22:00							
Arrive At Loc	02/02/2012 23:30							RIG WAS PULLING DRILL PIPE UPON HES ARRIVAL
Assessment Of Location Safety Meeting	02/03/2012 03:30							WITH ALL HES PERSONNEL
Other	02/03/2012 03:40							SPOT EQUIPMENT
Pre-Rig Up Safety Meeting	02/03/2012 03:50							WITH ALL HES PERSONNEL
Rig-Up Equipment	02/03/2012 04:00							
Pre-Job Safety Meeting	02/03/2012 05:00							WITH ALL PERSONNEL ON LOCATION
Start Job	02/03/2012 05:15							
Other	02/03/2012 05:15		2	2			90.0	FILL LINES WITH FRESH WATER
Test Lines	02/03/2012 05:16							TESTED LINES TO 2730 PSI PRESSURE HOLDING
Pump Spacer 1	02/03/2012 05:23		4	20			165.0	FRESH WATER
Pump Lead Cement	02/03/2012 05:31		6	67.8			300.0	160 SKS AT 12.3PPG, 2.38 FT3/SK, 13.75 GAL/SK
Activity Description	Date/Time	Cht	Rate bbl/min	Volume bbl		Pressure psig		Comments

Sold To #: 300721

Ship To #: 2900632

Quote #:

Sales Order #:

9214200

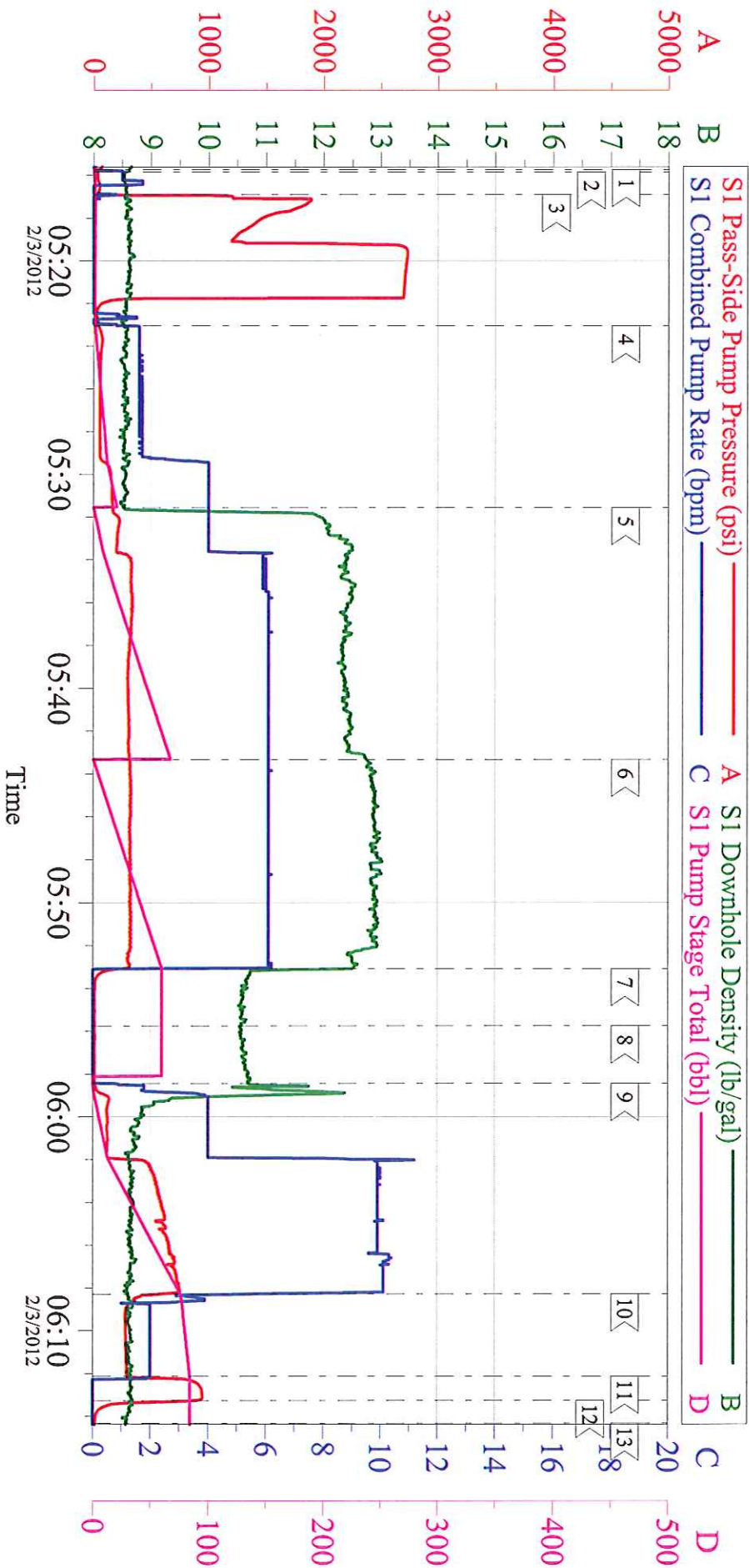
SUMMIT Version: 7.3.014

Saturday, February 04, 2012 08:05:00

Cementing Job Log

		#		Stage	Total	Tubing	Casing	
Pump Tail Cement	02/03/2012 05:43		6	60.1			330.0	160 SKS AT 12.8 PPG, 2.11 FT3/SK, 11.75 GAL/SK
Shutdown	02/03/2012 05:53							
Drop Top Plug	02/03/2012 05:55							PLUG LAUNCHED
Pump Displacement	02/03/2012 05:58		10	75			750.0	FRESH WATER
Slow Rate	02/03/2012 06:08		2	10			300.0	SLOW RATE 10 BBLS PRIOR TO CALCULATED DISPLACEMENT
Bump Plug	02/03/2012 06:12		2		85		950.0	PLUG BUMPED
Check Floats	02/03/2012 06:13							FLOATS HOLDING. HES RETURNED 1/2 BBL H2O TO PUMP
End Job	02/03/2012 06:14							PIPE WAS STATIC DURING JOB, GOOD CIRCULATION THROUGHOUT JOB, HES RETURNED 45 BBL CEMENT TO SURFACE
Pre-Rig Down Safety Meeting	02/03/2012 06:20							WITH ALL HES PERSONNEL
Rig-Down Equipment	02/03/2012 06:30							
Pre-Convoy Safety Meeting	02/03/2012 07:50							WITH ALL HES PERSONNEL
Crew Leave Location	02/03/2012 08:00							
Comment	02/03/2012 08:01							THANK YOU FOR USING HALLIBURTON CEMENT DEPARTMENT. JESSE SLAUGHTER AND CREW.

WILLIAMS RWF 41-31 9 5/8 SURFACE

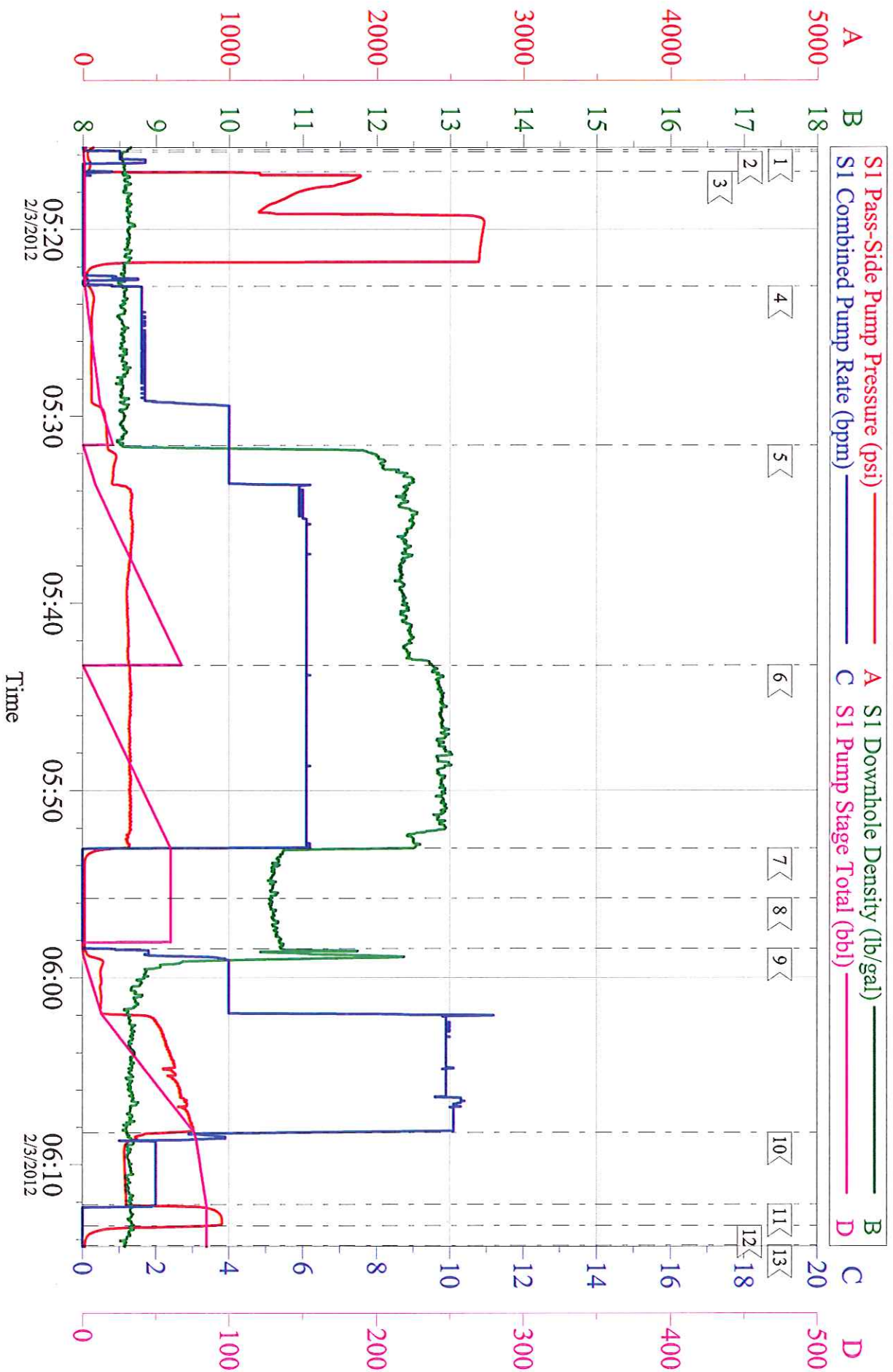


Customer: WILLIAMS
Well Description: RWF 41-31
Customer Rep: BRENT BASCOM

Job Date: 03-Feb-2012
Job Type: SURFACE
Cement Supervisor: JESSE SLAUGHTER

Sales Order #: 9214200
ADC Used: YES
Elite #4: CARL KUKUS

WILLIAMS RWF 41-31 9 5/8 SURFACE



Customer: WILLIAMS
Well Description: RWF 41-31
Customer Rep: BRENT BASCOM

Job Date: 03-Feb-2012
Job Type: SURFACE
Cement Supervisor: JESSE SLAUGHTER

Sales Order #: 9214200
ADC Used: YES
Elite #4: CARL KUKUS