
WPX ENERGY ROCKY MOUNTAIN LLC-EBUS

**KP 24-9
KOKOPELLI
Garfield County , Colorado**

Cement Surface Casing
15-Sep-2012

Post Job Report

The Road to Excellence Starts with Safety

Sold To #: 300721	Ship To #: 2949274	Quote #:	Sales Order #: 9788228
Customer: WPX ENERGY ROCKY MOUNTAIN LLC-EBUS	Customer Rep: Valad, Gary		
Well Name: KP	Well #: 24-9	API/UWI #: 05-045-21201	
Field: KOKOPELLI	City (SAP): SILT	County/Parish: Garfield	State: Colorado
Lat: N 39.533 deg. OR N 39 deg. 32 min. 0.348 secs.	Long: W 107.567 deg. OR W -108 deg. 25 min. 59.516 secs.		
Contractor: NABORS 574	Rig/Platform Name/Num: NABORS 574		
Job Purpose: Cement Surface Casing			
Well Type: Development Well	Job Type: Cement Surface Casing		
Sales Person: MAYO, MARK	Srvc Supervisor: CASTILLO, FRANCISCO	MBU ID Emp #: 513620	

Job Personnel

HES Emp Name	Exp Hrs	Emp #	HES Emp Name	Exp Hrs	Emp #	HES Emp Name	Exp Hrs	Emp #
ARNOLD, EDWARD John	6	439784	CASTILLO, FRANCISCO P	6	513620	CASTILLO, FRANCISCO P	6	513620
SINCLAIR, DAN J	6	338784	VANALSTYNE, TROY L	6	420256			

Equipment

HES Unit #	Distance-1 way	HES Unit #	Distance-1 way	HES Unit #	Distance-1 way	HES Unit #	Distance-1 way
10616651C	60 mile	10713212	60 mile	10867094	60 mile	10897925	60 mile
10951249	60 mile	11360871	60 mile	11808827	60 mile		

Job Hours

Date	On Location Hours	Operating Hours	Date	On Location Hours	Operating Hours	Date	On Location Hours	Operating Hours
9/15/2012	6	1						
TOTAL	6		Total is the sum of each column separately					

Job

Formation Name	Formation Depth (MD)	Top	SURFACE	Bottom	1515	Called Out	Date	Time	Time Zone
Form Type			BHST			On Location	15 - Sep - 2012	10:30	MST
Job depth MD	1515. ft		Job Depth TVD	. ft		Job Started	15 - Sep - 2012	15:10	MST
Water Depth			Wk Ht Above Floor	3. ft		Job Completed	15 - Sep - 2012	16:17	MST
Perforation Depth (MD)	From		To			Departed Loc	15 - Sep - 2012	17:15	MST

Well Data

Description	New / Used	Max pressure psig	Size in	ID in	Weight lbm/ft	Thread	Grade	Top MD ft	Bottom MD ft	Top TVD ft	Bottom TVD ft
-------------	------------	-------------------	---------	-------	---------------	--------	-------	-----------	--------------	------------	---------------

Sales/Rental/3rd Party (HES)

Description	Qty	Qty uom	Depth	Supplier
PLUG,CMTG,TOP,9 5/8,HWE,8.16 MIN/9.06 MA	1	EA	1463	HES

Tools and Accessories

Type	Size	Qty	Make	Depth	Type	Size	Qty	Make	Depth	Type	Size	Qty	Make
Guide Shoe					Packer					Top Plug	9.625	1	HES
Float Shoe	9.625	1	WTF	1500	Bridge Plug					Bottom Plug			
Float Collar	9.625	1	WTF	1463	Retainer					SSR plug set			
Insert Float										Plug Container	9.625	1	HES
Stage Tool										Centralizers	9.625	11	WTF

Miscellaneous Materials

Gelling Agt	Conc	Surfactant	Conc	Acid Type	Qty	Conc	%
Treatment Fld	Conc	Inhibitor	Conc	Sand Type	Size	Qty	

Fluid Data

Stage/Plug #: 1	Fluid Name	Qty	Qty uom	Mixing Density lbm/gal	Yield ft ³ /sk	Mix Fluid Gal/sk	Rate bbl/min	Total Mix Fluid Gal/sk
Fluid #	Stage Type							

Stage/Plug #: 1										
Fluid #	Stage Type	Fluid Name	Qty	Qty uom	Mixing Density lbm/gal	Yield ft ³ /sk	Mix Fluid Gal/sk	Rate bbl/min	Total Mix Fluid Gal/sk	
1	Spacer		20.00	bbl	.	.0	.0	4		
2	Lead Cement	VERSACEM (TM) SYSTEM (452010)	235.0	sacks	12.3	2.38	13.75	7	13.75	
3	Tail Cement	VERSACEM (TM) SYSTEM (452010)	160.0	sacks	12.8	2.11	11.75	6	11.75	
4	Displacement		115.00	bbl	.	.0	.0	7		
Calculated Values		Pressures		Volumes						
Displacement	7	Shut In: Instant		Lost Returns	NONE	Cement Slurry	160	Pad		
Top Of Cement	SURFACE	5 Min		Cement Returns	30	Actual Displacement	115	Treatment		
Frac Gradient		15 Min		Spacers	20	Load and Breakdown		Total Job	295	
Rates										
Circulating	RIG	Mixing	7	7			Avg. Job	7		
Cement Left In Pipe	Amount	43 ft	Reason	Shoe Joint						
Frac Ring # 1 @	ID	Frac ring # 2 @	ID	Frac Ring # 3 @	ID	Frac Ring # 4 @	ID			
The Information Stated Herein Is Correct				Customer Representative Signature						

The Road to Excellence Starts with Safety

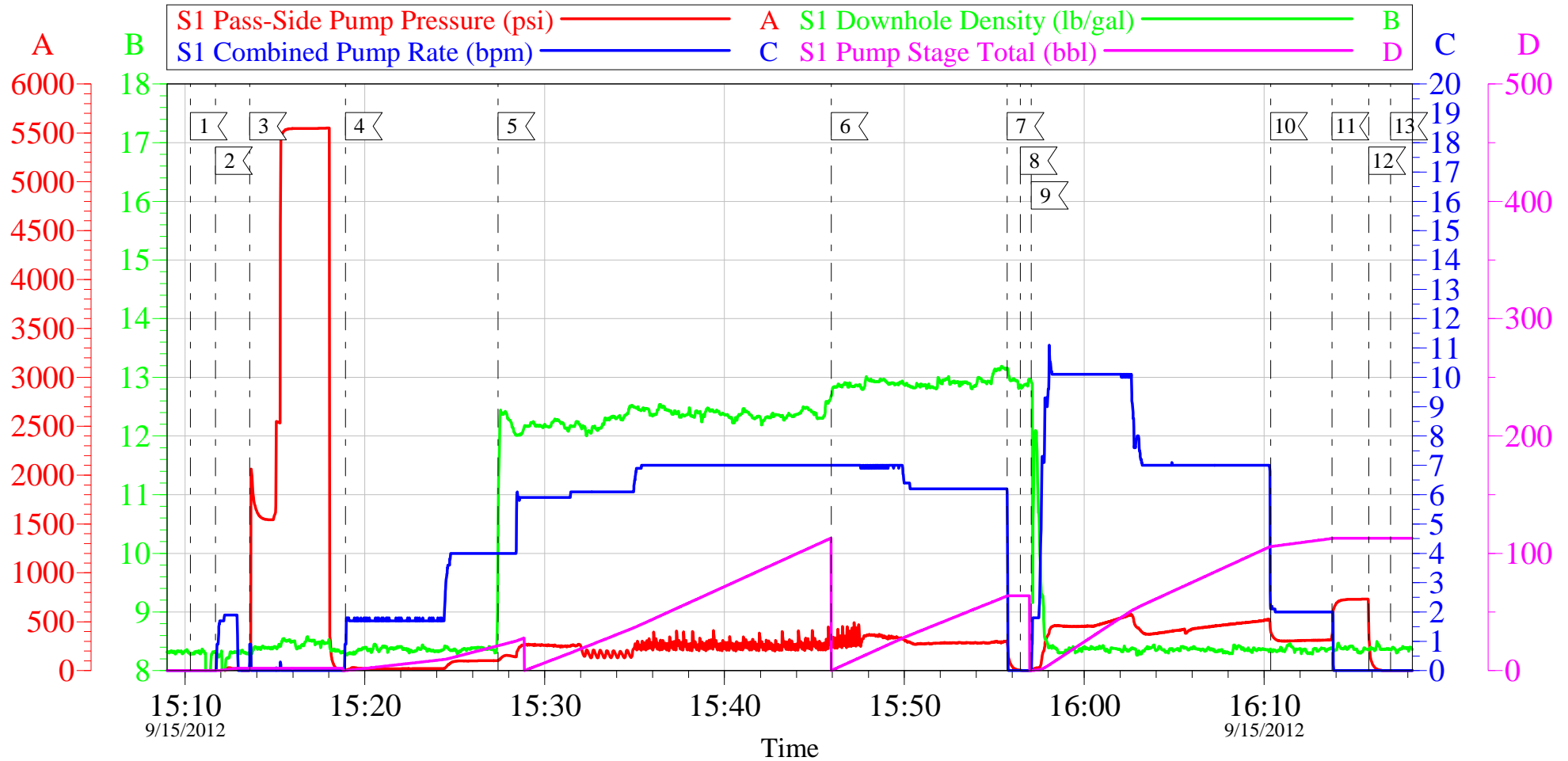
Sold To #: 300721		Ship To #: 2949274		Quote #:		Sales Order #: 9788228	
Customer: WPX ENERGY ROCKY MOUNTAIN LLC-EBUS				Customer Rep: Valad, Gary			
Well Name: KP			Well #: 24-9			API/UWI #: 05-045-21201	
Field: KOKOPELLI		City (SAP): SILT		County/Parish: Garfield		State: Colorado	
Legal Description:							
Lat: N 39.533 deg. OR N 39 deg. 32 min. 0.348 secs.				Long: W 107.567 deg. OR W -108 deg. 25 min. 59.516 secs.			
Contractor: NABORS 574			Rig/Platform Name/Num: NABORS 574				
Job Purpose: Cement Surface Casing						Ticket Amount:	
Well Type: Development Well			Job Type: Cement Surface Casing				
Sales Person: MAYO, MARK			Srv Supervisor: CASTILLO, FRANCISCO			MBU ID Emp #: 513620	

Activity Description	Date/Time	Cht #	Rate bbl/min	Volume bbl		Pressure psig		Comments
				Stage	Total	Tubing	Casing	
Pre-Convoy Safety Meeting	09/15/2012 08:15							ALL HES PERSONEL
Crew Leave Yard	09/15/2012 08:30							
Arrive At Loc	09/15/2012 10:30							RIG WAS JUST IN THE PROCESS OF BUILDING THE SHOE JOINT TO BEGIN RUNNING CASING
Assessment Of Location Safety Meeting	09/15/2012 10:45							ALL HES PERSONEL
Rig-Up Equipment	09/15/2012 10:55							
Pre-Job Safety Meeting	09/15/2012 15:00							ALL HES PERSONEL AND RIG CREW
Start Job	09/15/2012 15:10							TD-1515', TP-1500.67', SJ-37.86', FC-1462.81', 9 5/8 CASING, 32.3# H-40, MUD-9.2PPG, FV-70, PV-26, YP-17, pH-9.2, TEMP-99deg, CENTRALIZERS-11, FLOAT SHOE AND FLOAT COLLAR
Other	09/15/2012 15:11		2	2			21.0	FILL LINES
Other	09/15/2012 15:12		0.1	0.1				5TH GEAR STALL OU/PRESSUR HELD AT 1620 PSI
Pressure Test	09/15/2012 15:13		0.1	0.1				PRESSURE TEST PUMPING IRON/PRESSURE HELD AT 5543 PSI
Pump Spacer	09/15/2012 15:18		4	20			135.0	FRESH WATER

Activity Description	Date/Time	Cht #	Rate bbl/min	Volume bbl		Pressure psig		Comments
				Stage	Total	Tubing	Casing	
Pump Lead Cement	09/15/2012 15:27		7	99.6			241.0	235SKS/2.38YIELD/13.7 5GPS, SET UP TIME 2:38HRS AT 70 BC
Pump Tail Cement	09/15/2012 15:45		6	60			283.0	160SKS/2.11YIELD/11.7 5GPS, SET UP TIME 2:38HRS AT 70 BC
Shutdown	09/15/2012 15:55							
Drop Top Plug	09/15/2012 15:56							
Pump Displacement	09/15/2012 15:57		7	105			507.0	FRESH WATER
Slow Rate	09/15/2012 16:10		2	10			315.0	
Bump Plug	09/15/2012 16:13			115				CIRCULATED 30 BBLS OF CEMENT TO SURFACE
Check Floats	09/15/2012 16:15							
End Job	09/15/2012 16:17							
Post-Job Safety Meeting (Pre Rig-Down)	09/15/2012 16:20							ALL HES PERSONEL
Rig-Down Completed	09/15/2012 17:00							
Depart Location Safety Meeting	09/15/2012 17:05							ALL HES PERSONEL
Crew Leave Location	09/15/2012 17:15							
Other	09/15/2012 17:15							THANK YOU FOR CHOOSING HALLIBURTON, FROM JAVIER CASTILLO AND CREW

WPX KP 24-9

9 5/8 SURFACE



Local Event Log

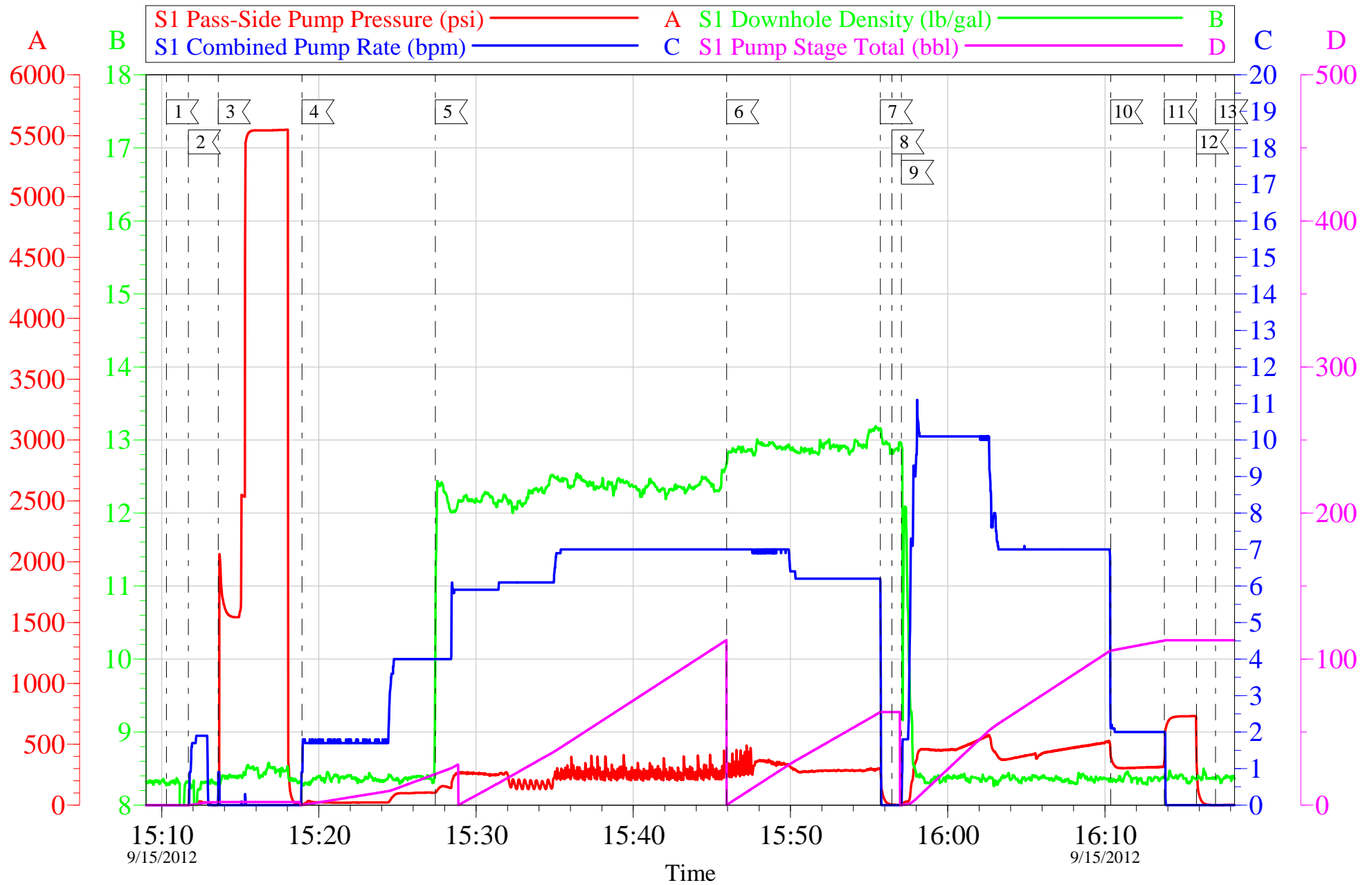
1 START JOB	15:10:18	2 FILL LINES	15:11:42	3 TESTLINES	15:13:36
4 H2O SPACER	15:18:55	5 LEAD CEMENT	15:27:24	6 TAIL CEMENT	15:45:56
7 SHUT DOWN	15:55:43	8 DROP PLUG	15:56:27	9 H2O DISPLACEMENT	15:57:03
10 SLOWRATE	16:10:22	11 BUMP PLUG	16:13:47	12 CHECKFLOATS	16:15:49
13 EDN JOB	16:17:02				

Customer:	WPX ENERGY ROCKY MOUNTAIN LLC-EBUS	Job Date:	15-Sep-2012	Sales Order #:	9788228
Well Description:	KP 24-9	Job Type:	9 5/8 SURFACE	ADC Used:	YES
Company Rep:	GARY VALAD	Cement Supervisor:	JAVIER CASTILLO	Elite #8:	TROY VANALSTYNE

OptiCem v6.4.10
15-Sep-12 16:23

WPX KP 24-9

9 5/8 SURFACE



Customer:	WPX ENERGY ROCKY MOUNTAIN LLC-EBUS	Job Date:	15-Sep-2012	Sales Order #:	9788228
Well Description:	KP 24-9	Job Type:	9 5/8 SURFACE	ADC Used:	YES
Company Rep:	GARY VALAD	Cement Supervisor:	JAVIER CASTILLO	Elite #8:	TROY VANALSTYNE

OptiCem v6.4.10
15-Sep-12 16:24

HALLIBURTON

Water Analysis Report

Company: WPX

Submitted by: JAVIER CASTILLO

Attention: J.Trout

Lease KP

Well # 24-9

Date: 9/15/2012

Date Rec.: 9/15/2012

S.O.# 9788228

Job Type: SURFACE

Specific Gravity	<i>MAX</i>	<i>1</i>
pH	<i>8</i>	<i>7</i>
Potassium (K)	<i>5000</i>	<i>250</i> Mg / L
Calcium (Ca)	<i>500</i>	<i>140</i> Mg / L
Iron (FE2)	<i>300</i>	<i>0</i> Mg / L
Chlorides (Cl)	<i>3000</i>	<i>0</i> Mg / L
Sulfates (SO ₄)	<i>1500</i>	<i>200</i> Mg / L
Chlorine (Cl ₂)		<i>0</i> Mg / L
Temp	<i>40-80</i>	<i>68</i> Deg
Total Dissolved Solids		<i>200</i> Mg / L

Respectfully: JAVIER CASTILLO

Title: CEMENTING SUPERVISOR

Location: Grand Junction, CO

NOTICE:

This report is limited to the described sample tested. Any person using or relying on this report agrees that Halliburton shall not be liable for any loss or damage whether due to act or omission resulting from such report or

Sales Order #: 9788228	Line Item: 10	Survey Conducted Date: 9/15/2012
Customer: WPX ENERGY ROCKY MOUNTAIN LLC-EBUS		Job Type (BOM): CMT SURFACE CASING BOM
Customer Representative: GARY VALAD		API / UWI: (leave blank if unknown) 05-045-21201
Well Name: KP		Well Number: 24-9
Well Type: Development Well	Well Country: United States of America	
H2S Present: No	Well State: Colorado	Well County: Garfield

Dear Customer,

We hope that you were satisfied with the service quality of this job performed by Halliburton. It is the aim of our management and service personnel to deliver equipment and service of a standard unmatched in the service sector of the energy industry.

Please take the time to let us know if our performance met with your satisfaction. Please be as critical as possible to ensure we constantly improve our service. Your comments are of great value to us and are intended for the exclusive use of Halliburton.

CUSTOMER SATISFACTION SURVEY

CATEGORY	CUSTOMER SATISFACTION RESPONSE	
Survey Conducted Date	The date the survey was conducted	9/15/2012
Survey Interviewer	The survey interviewer is the person who initiated the survey.	FRANCISCO CASTILLO (HB85312)
Customer Participation	Did the customer participate in this survey? (Y/N)	Yes
Customer Representative	Enter the Customer representative name	GARY VALAD
HSE	Was our HSE performance satisfactory? Circle Y or N	Yes
Equipment	Were you satisfied with our Equipment? Circle Y or N	Yes
Personnel	Were you satisfied with our people? Circle Y or N	Yes
Customer Comment	Customer's Comment	GOOD JOB

CUSTOMER SIGNATURE

Sales Order #: 9788228	Line Item: 10	Survey Conducted Date: 9/15/2012
Customer: WPX ENERGY ROCKY MOUNTAIN LLC-EBUS		Job Type (BOM): CMT SURFACE CASING BOM
Customer Representative: GARY VALAD		API / UWI: (leave blank if unknown) 05-045-21201
Well Name: KP		Well Number: 24-9
Well Type: Development Well	Well Country: United States of America	
H2S Present: No	Well State: Colorado	Well County: Garfield

KEY PERFORMANCE INDICATORS

General	
Survey Conducted Date The date the survey was conducted	9/15/2012

Cementing KPI Survey	
Type of Job Select the type of job. (Cementing or Non-Cementing)	0
Select the Maximum Deviation range for this Job What is the highest deviation for the job you just completed? This may not be the maximum well deviation.	Vertical
Total Operating Time (hours) Total Operating Hours Including Rig-up, Pumping, Rig-down. Enter in decimal format.	6
HSE Incident, Accident, Injury HSE Incident, Accident, Injury. This should be recordable incidents only.	No
Was the job purpose achieved? Was the job delivered correctly as per customer agreed design?	Yes
Operating Hours (Pumping Hours) Total number of hours pumping fluid on this job. Enter in decimal format.	1
Customer Non-Productive Rig Time (hrs) Lost time due to Halliburton in the start, execution, or completion of an ordered service or product, or delays in a follow-on service. Enter in decimal format. 0 if none.	0
Type of Rig Classification Job Was Performed Type Of Rig (classification) Job Was Performed On	Drilling Rig (Portable)
Number Of JSAs Performed Number Of Jsas Performed	5
Number of Unplanned Shutdowns Unplanned shutdown is when injection stops for any period of time.	0
Was this a Primary Cement Job (Yes / No)	Yes

Sales Order #: 9788228	Line Item: 10	Survey Conducted Date: 9/15/2012
Customer: WPX ENERGY ROCKY MOUNTAIN LLC-EBUS		Job Type (BOM): CMT SURFACE CASING BOM
Customer Representative: GARY VALAD		API / UWI: (leave blank if unknown) 05-045-21201
Well Name: KP		Well Number: 24-9
Well Type: Development Well	Well Country: United States of America	
H2S Present: No	Well State: Colorado	Well County: Garfield

Primary Cement Job= Casing job, Liner job, or Tie-back job.	
Did We Run Wiper Plugs? Did We Run Top And Bottom Casing Wiper Plugs?	Top
Mixing Density of Job Stayed in Designed Density Range (0-100%) Density Range defined as +/- .20 ppg. Calculation: Total BBLs cement mixed at designed density divided by total BBLs of cement multiplied by 100	95
Was Automated Density Control Used? Was Automated Density Control (ADC) Used ?	Yes
Pump Rate (percent) of Job Stayed At Designed Pump Rate Pump Rate range defined as +/- 1bbl/min. Calculation: Total BBLs of fluid pumped at the designed rate divided by Total BBLs of fluid pumped, multiplied by 100	95
Nbr of Remedial Sqz Jobs Rqd - Competition Number Of Remedial Squeeze Jobs Required After Primary Job Performed By Competition	0
Nbr of Remedial Plug Jobs Rqd - HES Number Of Remedial Plug Jobs Needed After Primary Plug Pumped By HES	0
Nbr of Remedial Sqz Jobs Rqd - HES Number Of Remedial Squeeze Jobs Required After Primary Job Performed By HES	0