
BLACK HILLS EXPLORATION & PROD-EBIZ

**HOMER DEEP UNIT 21-41
SOUTH SHALE RIDGE
Mesa County , Colorado**

Cement Surface Casing
13-Aug-2011

Post Job Summary

The Road to Excellence Starts with Safety

| | | | |
|-----------------------------------------------------|---------------------------------------------------------|-------------------------|------------------------|
| Sold To #: 306454 | Ship To #: 2871868 | Quote #: | Sales Order #: 8392946 |
| Customer: BLACK HILLS EXPLORATION & PROD-EBIZ | Customer Rep: Baxter, Darrell | | |
| Well Name: HOMER DEEP UNIT | Well #: 21-41 | API/UWI #: 05-077-09439 | |
| Field: SOUTH SHALE RIDGE | City (SAP): COLLBRAN | County/Parish: Mesa | State: Colorado |
| Lat: N 39.351 deg. OR N 39 deg. 21 min. 2.268 secs. | Long: W 108.325 deg. OR W -109 deg. 40 min. 31.62 secs. | | |
| Contractor: Frontier Drilling | Rig/Platform Name/Num: Frontier 15 | | |
| Job Purpose: Cement Surface Casing | | | |
| Well Type: Development Well | Job Type: Cement Surface Casing | | |
| Sales Person: ROYSTER, JACOB | Srv Supervisor: TRIPLETT, MICHEAL | MBU ID Emp #: 447908 | |

Job Personnel

| HES Emp Name | Exp Hrs | Emp # | HES Emp Name | Exp Hrs | Emp # | HES Emp Name | Exp Hrs | Emp # |
|---------------------|---------|--------|---------------------------|---------|--------|------------------------|---------|--------|
| BANKS, BRENT A | 9 | 371353 | HARDRICK, RAYMOND Frank | 9 | 391324 | JENKINS, DEMON Lashaun | 9 | 457892 |
| SINGLETON, AUSTIN W | 9 | 487406 | TRIPLETT, MICHEAL Anthony | 9 | 447908 | | | |

Equipment

| HES Unit # | Distance-1 way | HES Unit # | Distance-1 way | HES Unit # | Distance-1 way | HES Unit # | Distance-1 way |
|------------|----------------|------------|----------------|------------|----------------|------------|----------------|
| 10248065 | 70 mile | 10616651C | 70 mile | 10867322 | 70 mile | 10995025 | 70 mile |
| 10998512 | 70 mile | 11259884 | 70 mile | | | | |

Job Hours

| Date | On Location Hours | Operating Hours | Date | On Location Hours | Operating Hours | Date | On Location Hours | Operating Hours |
|------------|-------------------|-----------------|------------|-------------------|-----------------|------|-------------------|-----------------|
| 08/12/2011 | 4.5 | 0 | 08/13/2011 | 4.5 | 2 | | | |

TOTAL Total is the sum of each column separately

Job

| Formation Name | Top | Bottom | Called Out | Date | Time | Time Zone |
|------------------------|---------|-------------------|---------------|-----------------|-------|-----------|
| Formation Depth (MD) | | | On Location | 12 - Aug - 2011 | 15:30 | MST |
| Form Type | BHST | | Job Started | 12 - Aug - 2011 | 19:30 | MST |
| Job depth MD | 450. ft | Job Depth TVD | Job Started | 13 - Aug - 2011 | 02:08 | MST |
| Water Depth | | Wk Ht Above Floor | Job Completed | 13 - Aug - 2011 | 03:26 | MST |
| Perforation Depth (MD) | From | To | Departed Loc | 13 - Aug - 2011 | 04:30 | MST |

Well Data

| Description | New / Used | Max pressure psig | Size in | ID in | Weight lbm/ft | Thread | Grade | Top MD ft | Bottom MD ft | Top TVD ft | Bottom TVD ft |
|----------------|------------|-------------------|---------|-------|---------------|--------|-------|-----------|--------------|------------|---------------|
| OPEN HOLE | | | | 14.75 | | | | . | 450. | | |
| SURFACE CASING | New | | 13.375 | | | | J-55 | . | 450. | | |

Sales/Rental/3rd Party (HES)

| Description | Qty | Qty uom | Depth | Supplier |
|----------------------------------------------|-----|---------|-------|----------|
| PLUG,CMTG, TOP, 13 3/8, HWE, 11.79 MIN/12.72 | 1 | EA | | |
| CENTRALIZER-13 3/8"-CSG-17 1/2"-HINGED | 7 | EA | | |
| CLAMP - LIMIT - 13-3/8 - HINGED - | 1 | EA | | |
| KIT, HALL WELD-A | 2 | EA | | |

Tools and Accessories

| Type | Size | Qty | Make | Depth | Type | Size | Qty | Make | Depth | Type | Size | Qty | Make |
|--------------|------|-----|------|-------|-------------|------|-----|------|-------|----------------|------|-----|------|
| Guide Shoe | | | | | Packer | | | | | Top Plug | | | |
| Float Shoe | | | | | Bridge Plug | | | | | Bottom Plug | | | |
| Float Collar | | | | | Retainer | | | | | SSR plug set | | | |
| Insert Float | | | | | | | | | | Plug Container | | | |
| Stage Tool | | | | | | | | | | Centralizers | | | |

Miscellaneous Materials

| Gelling Agt | Conc | Surfactant | Conc | Acid Type | Qty | Conc | % |
|-------------|------|------------|------|-----------|-----|------|---|
|-------------|------|------------|------|-----------|-----|------|---|

| | | | | | | | | | | | | | |
|------------------------------------------|--------------|-------------------------------|----------|-----------------|-----------------------------------|--------------|------------------------|---------------------|------------------|--------------|------------------------|-----------------|-----|
| Treatment Fld | | Conc | | Inhibitor | | Conc | | Sand Type | | Size | | Qty | |
| Fluid Data | | | | | | | | | | | | | |
| Stage/Plug #: 1 | | | | | | | | | | | | | |
| Fluid # | Stage Type | Fluid Name | | | Qty | Qty uom | Mixing Density lbm/gal | Yield ft3/sk | Mix Fluid Gal/sk | Rate bbl/min | Total Mix Fluid Gal/sk | | |
| 1 | Water Spacer | | | | 20.00 | bbl | 8.34 | | | .0 | | | |
| 2 | Lead Cement | VERSACEM (TM) SYSTEM (452010) | | | 200.0 | sacks | 12.3 | 2.38 | 13.75 | | 13.75 | | |
| | | 13.75 Gal FRESH WATER | | | | | | | | | | | |
| 3 | Tail Cement | VERSACEM (TM) SYSTEM (452010) | | | 100.0 | sacks | 12.8 | 2.11 | 11.75 | | 11.75 | | |
| | | 11.75 Gal FRESH WATER | | | | | | | | | | | |
| 4 | Displacement | | | | 62.00 | bbl | 8.43 | .0 | .0 | .0 | | | |
| Calculated Values | | Pressures | | | Volumes | | | | | | | | |
| Displacement | 62.6 | Shut In: Instant | | | Lost Returns | | 0 | Cement Slurry | | 122 | Pad | | |
| Top Of Cement | SURFACE | 5 Min | | | Cement Returns | | 20 | Actual Displacement | | | Treatment | | |
| Frac Gradient | | 15 Min | | | Spacers | | 20 | Load and Breakdown | | | Total Job | | 205 |
| Rates | | | | | | | | | | | | | |
| Circulating | 4 | Mixing | | | 4 | Displacement | | 4 | Avg. Job | | 4 | | |
| Cement Left In Pipe | | Amount | 39.88 ft | Reason | Shoe Joint | | | | | | | | |
| Frac Ring # 1 @ | | ID | | Frac ring # 2 @ | | ID | | Frac Ring # 3 @ | | ID | | Frac Ring # 4 @ | ID |
| The Information Stated Herein Is Correct | | | | | Customer Representative Signature | | | | | | | | |

The Road to Excellence Starts with Safety

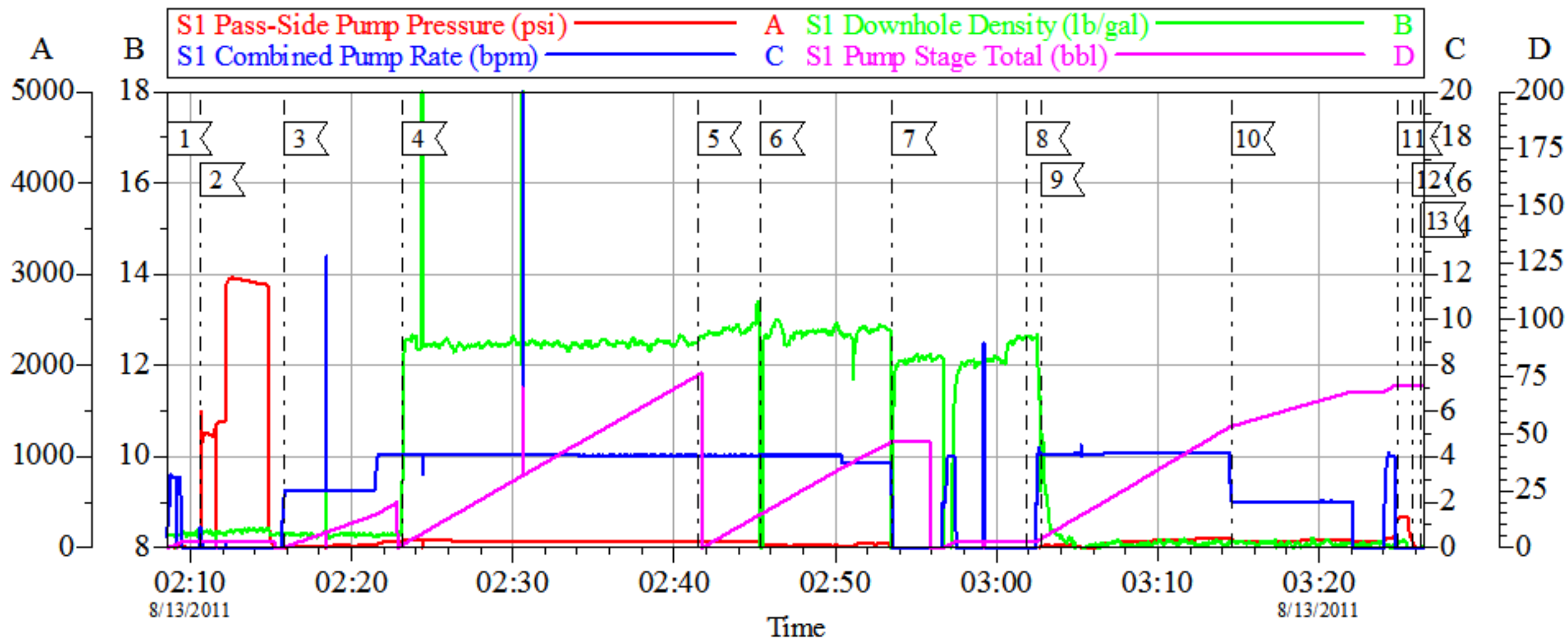
| | | | |
|------------------------------------------------------------|----------------------------|----------------------------------------------------------------|--------------------------------|
| Sold To #: 306454 | Ship To #: 2871868 | Quote #: | Sales Order #: 8392946 |
| Customer: BLACK HILLS EXPLORATION & PROD-EBIZ | | Customer Rep: Baxter, Darrell | |
| Well Name: HOMER DEEP UNIT | | Well #: 21-41 | API/UWI #: 05-077-09439 |
| Field: SOUTH SHALE RIDGE | City (SAP): COLBRAN | County/Parish: Mesa | State: Colorado |
| Legal Description: | | | |
| Lat: N 39.351 deg. OR N 39 deg. 21 min. 2.268 secs. | | Long: W 108.325 deg. OR W -109 deg. 40 min. 31.62 secs. | |
| Contractor: Frontier Drilling | | Rig/Platform Name/Num: Frontier 15 | |
| Job Purpose: Cement Surface Casing | | | Ticket Amount: |
| Well Type: Development Well | | Job Type: Cement Surface Casing | |
| Sales Person: ROYSTER, JACOB | | Srv Supervisor: TRIPLETT, MICHEAL | MBU ID Emp #: 447908 |

| Activity Description | Date/Time | Cht # | Rate bbl/min | Volume bbl | | Pressure psig | | Comments |
|---------------------------------------|------------------|-------|--------------|------------|-------|---------------|--------|-----------------------------------------------------------------------------------------------------------------------------------|
| | | | | Stage | Total | Tubing | Casing | |
| Call Out | 08/12/2011 01:16 | | | | | | | |
| Pre-Convoy Safety Meeting | 08/12/2011 01:16 | | | | | | | |
| Crew Leave Yard | 08/12/2011 01:16 | | | | | | | |
| Arrive At Loc | 08/12/2011 01:16 | | | | | | | RIG WAS RUNNING CASING, VERIFY CEMENT AND NUMBERS WITH COMPANY REP. HAD TO CALL FOR MORE CEMENT DUE TO NOT HAVING ENOUGH FOR JOB. |
| Assessment Of Location Safety Meeting | 08/12/2011 01:16 | | | | | | | |
| Other | 08/12/2011 01:16 | | | | | | | SPOT EQUIPMENT, 1 RCM PUMP TRUCK, 1 660, 1 BODY LOAD |
| Pre-Rig Up Safety Meeting | 08/12/2011 01:16 | | | | | | | GO OVER JSA AND HAVE CREW SIGN. |
| Rig-Up Equipment | 08/12/2011 01:16 | | | | | | | |
| Pre-Job Safety Meeting | 08/13/2011 01:50 | | | | | | | GO OVER SAFETY INFORMATION AND JOB PROCEDURES. |
| Start Job | 08/13/2011 02:08 | | | | | | | TD:450', TP:445', SJ:39.88', MW:9.1, CASING: 13.375" 54.5#, OH: 17.5" |
| Activity Description | Date/Time | Cht # | Rate bbl/min | Volume bbl | | Pressure psig | | Comments |
| | | | | Stage | Total | Tubing | Casing | |

| | | | | | | | | |
|----------------------------------------|---------------------|--|---|------|--|--|--------|----------------------------------------------------------------------------------------------------------------------------------------------------------------|
| Test Lines | 08/13/2011 02:10 | | | | | | 3000.0 | PRESSURE TEST LINES AND PUMP STARTED AT 2982 PSI AND ENDED AT 2910 PSI. LOST 70 PSI IN TWO MINUTES. |
| Pump Spacer 1 | 08/13/2011 02:15 | | 4 | 20 | | | 85.0 | FRESH WATER |
| Pump Lead Cement | 08/13/2011 02:23 | | 4 | 84.8 | | | 88.0 | 200 SACKS MIXED @ 12.3, 2.38 YIELD, 13.75GAL/SACK |
| Pump Tail Cement | 08/13/2011 02:41 | | 4 | 37.6 | | | 43.0 | 100 SACKS MIXED @ 12.8, 2.11 YIELD, 11.75 GAL/SACK |
| Shutdown | 08/13/2011 02:53 | | | | | | | |
| Drop Top Plug | 08/13/2011 03:01 | | | | | | | VERIFY PLUG LEFT, HAD TO PUSH PLUG DOWN BY HAND. |
| Pump Displacement | 08/13/2011 03:02 | | 4 | 62.6 | | | 130.0 | FRESHWATER |
| Slow Rate | 08/13/2011 03:14 | | 4 | 52.6 | | | 94.0 | SLOWRAT LAST 10 BBLS PRIOR TO BUMPING THE PLUG, PLUG DIDN'T BUP AT 2 BPM, PLUG BUMPED AT 4 BPM. |
| Bump Plug | 08/13/2011 03:24 | | | | | | 126.0 | BUMP PLUG AND WENT 300 PSI OVER TO 426 PSI |
| Check Floats | 08/13/2011 03:25 | | | | | | | FLOATS HELD |
| End Job | 08/13/2011 03:26 | | | | | | | GOOD CIRCULATION THROUGHOUT THE JOB. GOT CEMENT RETURNS WITH 40 BBLS OF DISPLACEMENT AWAY. GOT 20 BBLS OF CEMENT BACK TO SURFACE. NO ADDITIONAL HOURS CHARGED. |
| Post-Job Safety Meeting (Pre Rig-Down) | 08/13/2011 03:30 | | | | | | | |
| Rig-Down Equipment | 08/13/2011 03:40 | | | | | | | |
| Pre-Convoy Safety Meeting | 08/13/2011 04:25 | | | | | | | |
| Crew Leave Location | 08/13/2011 04:30 | | | | | | | THANKS FOR USING HALLIBURTON MIKE TRIPLETT AND CREW |

BLACK HILLS

SURFACE HOMER DEEP UNIT 21-41



Local Event Log

| | | | | | |
|----|-------------------------|----------|----|-------------------|----------|
| 1 | START JOB | 02:08:37 | 2 | PRESSURE TEST | 02:10:39 |
| 3 | START FRESHWATER SPACER | 02:15:48 | 4 | START LEAD CEMENT | 02:23:10 |
| 5 | START TAIL CEMENT | 02:41:28 | 6 | SUCKED AIR | 02:45:22 |
| 7 | SHUTDOWN | 02:53:33 | 8 | DROP PLUG | 03:01:51 |
| 9 | START DISPLACEMENT | 03:02:44 | 10 | SLOWRATE | 03:14:33 |
| 11 | BUMP PLUG | 03:24:53 | 12 | CHECK FLOATS | 03:25:45 |
| 13 | END JOB | 03:26:20 | | | |

Customer: BLACK HILLS
Well Description: HOMER DEEP UNIT 21-41
ADC USED: YES

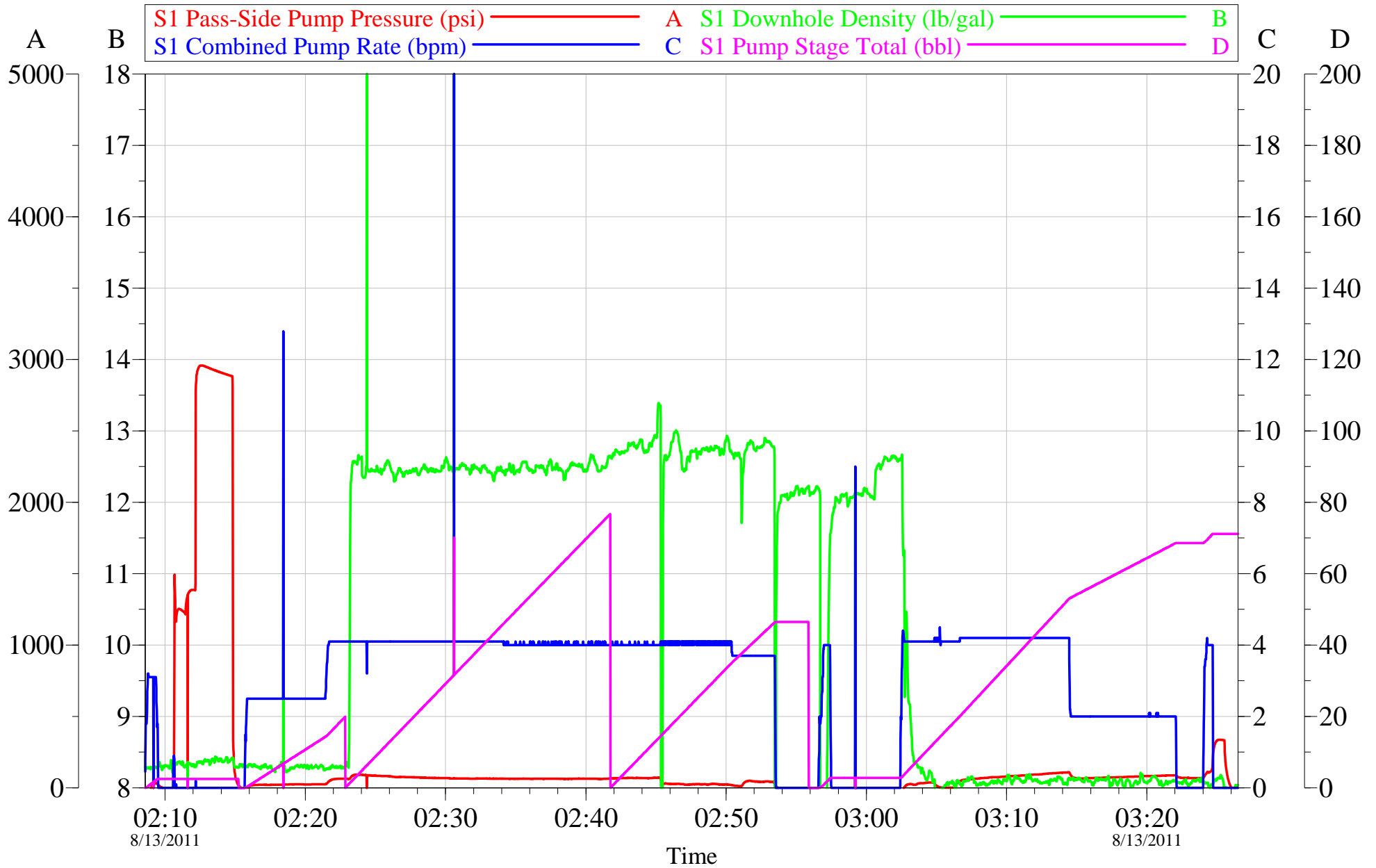
Job Date: 13-Aug-2011
JOB TYPE: SURFACE
SERVICE SUPERVISOR: MIKE TRIPLETT

Sales Order #: 8392946
COMPANY REP: DARRELL BAXTER
ELITE/OPERATOR 4/ BRENT BANKS

OptiCem v6.4.9
13-Aug-11 03:36

BLACK HILLS

SURFACE HOMER DEEP UNIT 21-41



| | | | | | |
|-------------------|-----------------------|---------------------|---------------|----------------|----------------|
| Customer: | BLACK HILLS | Job Date: | 13-Aug-2011 | Sales Order #: | 8392946 |
| Well Description: | HOMER DEEP UNIT 21-41 | JOB TYPE: | SURFACE | COMPANY REP: | DARRELL BAXTER |
| ADC USED: | YES | SERVICE SUPERVISOR: | MIKE TRIPLETT | ELITE/OPERATER | 4/ BRENT BANKS |

OptiCem v6.4.9
13-Aug-11 03:37

| | | |
|---------------------------------------------------------|--------------------------------------------------|------------------------------------------------------------|
| Sales Order #: 8392946 | Line Item: 10 | Survey Conducted Date: 8/13/2011 |
| Customer: BLACK HILLS EXPLORATION & PROD-EBIZ | | Job Type (BOM): CMT SURFACE CASING BOM |
| Customer Representative: DARRELL BAXTER | | API / UWI: (leave blank if unknown) 05-077-09439 |
| Well Name: HOMER DEEP UNIT | | Well Number: 21-41 |
| Well Type: Development Well | Well Country: United States of America | |
| H2S Present: No | Well State: Colorado | Well County: Mesa |

Dear Customer,

We hope that you were satisfied with the service quality of this job performed by Halliburton. It is the aim of our management and service personnel to deliver equipment and service of a standard unmatched in the service sector of the energy industry.

Please take the time to let us know if our performance met with your satisfaction. Please be as critical as possible to ensure we constantly improve our service. Your comments are of great value to us and are intended for the exclusive use of Halliburton.

CUSTOMER SATISFACTION SURVEY

| CATEGORY | CUSTOMER SATISFACTION RESPONSE | |
|-------------------------|----------------------------------------------------------------------|----------------------------|
| Survey Conducted Date | The date the survey was conducted | 8/13/2011 |
| Survey Interviewer | The survey interviewer is the person who initiated the survey. | MICHEAL TRIPLETT (HB15721) |
| Customer Participation | Did the customer participate in this survey? (Y/N) | Yes |
| Customer Representative | Enter the Customer representative name | DARRELL BAXTER |
| HSE | Was our HSE performance satisfactory? Circle Y or N | Yes |
| Equipment | Were you satisfied with our Equipment? Circle Y or N | Yes |
| Personnel | Were you satisfied with our people? Circle Y or N | Yes |
| Customer Comment | Customer's Comment | GOOD JOB |
| Job DVA | Did we provide job DVA above our normal service today? Circle Y or N | No |
| Time | Please enter hours in decimal format to nearest quarter hour. | |
| Other | Enter short text for other efficiencies gained. | |
| Customer Initials | Customer's Initials | |
| Please provide details | Please describe how the job efficiencies were gained. | |

CUSTOMER SIGNATURE

| | | |
|---------------------------------------------------------|--------------------------------------------------|------------------------------------------------------------|
| Sales Order #: 8392946 | Line Item: 10 | Survey Conducted Date: 8/13/2011 |
| Customer: BLACK HILLS EXPLORATION & PROD-EBIZ | | Job Type (BOM): CMT SURFACE CASING BOM |
| Customer Representative: DARRELL BAXTER | | API / UWI: (leave blank if unknown) 05-077-09439 |
| Well Name: HOMER DEEP UNIT | | Well Number: 21-41 |
| Well Type: Development Well | Well Country: United States of America | |
| H2S Present: No | Well State: Colorado | Well County: Mesa |

KEY PERFORMANCE INDICATORS

| General | |
|-------------------------------------------------------------------|-----------|
| Survey Conducted Date The date the survey was conducted | 8/13/2011 |

| Cementing KPI Survey | |
|------------------------------------------------------------------------------------------------------------------------------------------------------------------------------------------------------------------------------|-------------------------|
| Type of Job Select the type of job. (Cementing or Non-Cementing) | 0 |
| Select the Maximum Deviation range for this Job What is the highest deviation for the job you just completed? This may not be the maximum well deviation. | Vertical |
| Total Operating Time (hours) Total Operating Hours Including Rig-up, Pumping, Rig-down. Enter in decimal format. | 4 |
| HSE Incident, Accident, Injury HSE Incident, Accident, Injury. This should be recordable incidents only. | No |
| Was the job purpose achieved? Was the job delivered correctly as per customer agreed design? | Yes |
| Operating Hours (Pumping Hours) Total number of hours pumping fluid on this job. Enter in decimal format. | 2 |
| Customer Non-Productive Rig Time (hrs) Lost time due to Halliburton in the start, execution, or completion of an ordered service or product, or delays in a follow-on service. Enter in decimal format. 0 if none. | 0 |
| Type of Rig Classification Job Was Performed Type Of Rig (classification) Job Was Performed On | Drilling Rig (Portable) |
| Number Of JSAs Performed Number Of Jsas Performed | 7 |
| Number of Unplanned Shutdowns Unplanned shutdown is when injection stops for any period of time. | 0 |
| Was this a Primary Cement Job (Yes / No) | Yes |

| | | |
|---------------------------------------------------------|--------------------------------------------------|------------------------------------------------------------|
| Sales Order #: 8392946 | Line Item: 10 | Survey Conducted Date: 8/13/2011 |
| Customer: BLACK HILLS EXPLORATION & PROD-EBIZ | | Job Type (BOM): CMT SURFACE CASING BOM |
| Customer Representative: DARRELL BAXTER | | API / UWI: (leave blank if unknown) 05-077-09439 |
| Well Name: HOMER DEEP UNIT | | Well Number: 21-41 |
| Well Type: Development Well | Well Country: United States of America | |
| H2S Present: No | Well State: Colorado | Well County: Mesa |

| | |
|----------------------------------------------------------------------------------------------------------------------------------------------------------------------------------------------------------------------------------|-----|
| Primary Cement Job= Casing job, Liner job, or Tie-back job. | |
| Did We Run Wiper Plugs? Did We Run Top And Bottom Casing Wiper Plugs? | Top |
| Mixing Density of Job Stayed in Designed Density Range (0-100%) Density Range defined as +/- .20 ppg. Calculation: Total BBLs cement mixed at designed density divided by total BBLs of cement multiplied by 100 | 95 |
| Was Automated Density Control Used? Was Automated Density Control (ADC) Used ? | Yes |
| Pump Rate (percent) of Job Stayed At Designed Pump Rate Pump Rate range defined as +/- 1bbl/min. Calculation: Total BBLs of fluid pumped at the designed rate divided by Total BBLs of fluid pumped, multiplied by 100 | 95 |
| Nbr of Remedial Sqz Jobs Rqd - Competition Number Of Remedial Squeeze Jobs Required After Primary Job Performed By Competition | 0 |
| Nbr of Remedial Plug Jobs Rqd - HES Number Of Remedial Plug Jobs Needed After Primary Plug Pumped By HES | 0 |
| Nbr of Remedial Sqz Jobs Rqd - HES Number Of Remedial Squeeze Jobs Required After Primary Job Performed By HES | 0 |