

HALLIBURTON

WPX ENERGY ROCKY MOUNTAIN LLC-EBUS

**RG 414-14-298
SULPHUR CREEK
Rio Blanco County , Colorado**

Cement Multiple Stages

15-May-2012

Post Job Report

The Road to Excellence Starts with Safety

Sold To #: 300721	Ship To #: 2925160	Quote #:	Sales Order #: 9506910
Customer: WPX ENERGY ROCKY MOUNTAIN LLC-EBUS		Customer Rep: Brunk, Andrew	
Well Name: RG		Well #: 414-14-298	API/UWI #: 05-103-11897
Field: SULPHUR CREEK	City (SAP): SILT	County/Parish: Rio Blanco	State: Colorado
Lat: N 39.87 deg. OR N 39 deg. 52 min. 13.386 secs.		Long: W 108.363 deg. OR W -109 deg. 38 min. 12.523 secs.	
Contractor: CYCLONE 29		Rig/Platform Name/Num: CYCLONE 29	
Job Purpose: Cement Multiple Stages			
Well Type: Development Well		Job Type: Cement Multiple Stages	
Sales Person: MAYO, MARK		Srv Supervisor: HUGENTOBLE, LOGAN	MBU ID Emp #: 447333

Job Personnel

HES Emp Name	Exp Hrs	Emp #	HES Emp Name	Exp Hrs	Emp #	HES Emp Name	Exp Hrs	Emp #
BANKS, BRENT A	15	371353	HONE, AARON D	15	381285	HUGENTOBLE, LOGAN Mark	15	447333
SALAZAR, PAUL Omar	15	445614	SILVERTHORN, AARON Jacob	15	491305			

Equipment

HES Unit #	Distance-1 way	HES Unit #	Distance-1 way	HES Unit #	Distance-1 way	HES Unit #	Distance-1 way
10744549	30 mile	10872429	30 mile	10876398	30 mile	10951246	30 mile
10995027	30 mile	11583916	30 mile	11808847	30 mile		

Job Hours

Date	On Location Hours	Operating Hours	Date	On Location Hours	Operating Hours	Date	On Location Hours	Operating Hours
5/15/12	15	6						

TOTAL Total is the sum of each column separately

Job

Formation Name	Top	Bottom	Called Out	Date	Time	Time Zone
Formation Depth (MD)			On Location	15 - May - 2012	02:30	MST
Form Type	BHST	115 degF	Job Started	15 - May - 2012	07:00	MST
Job depth MD	3388. ft	Job Depth TVD	Job Completed	15 - May - 2012	12:55	MST
Water Depth		Wk Ht Above Floor	Departed Loc	15 - May - 2012	20:19	MST
Perforation Depth (MD)	From	To		15 - May - 2012	22:00	MST

Well Data

Description	New / Used	Max pressure psig	Size in	ID in	Weight lbm/ft	Thread	Grade	Top MD ft	Bottom MD ft	Top TVD ft	Bottom TVD ft
-------------	------------	-------------------	---------	-------	---------------	--------	-------	-----------	--------------	------------	---------------

Tools and Accessories

Type	Size	Qty	Make	Depth	Type	Size	Qty	Make	Depth	Type	Size	Qty	Make
Guide Shoe					Packer					Top Plug			
Float Shoe					Bridge Plug					Bottom Plug			
Float Collar					Retainer					SSR plug set			
Insert Float										Plug Container			
Stage Tool										Centralizers			

Miscellaneous Materials

Gelling Agt	Conc	Surfactant	Conc	Acid Type	Qty	Conc	%
Treatment Fld	Conc	Inhibitor	Conc	Sand Type	Size	Qty	

Fluid Data

Stage/Plug #: 1									
Fluid #	Stage Type	Fluid Name	Qty	Qty uom	Mixing Density lbm/gal	Yield ft3/sk	Mix Fluid Gal/sk	Rate bbl/min	Total Mix Fluid Gal/sk

Stage/Plug #: 1

Stage/Plug #: 1									
Fluid #	Stage Type	Fluid Name	Qty	Qty uom	Mixing Density lbm/gal	Yield ft ³ /sk	Mix Fluid Gal/sk	Rate bbl/min	Total Mix Fluid Gal/sk
1	Fresh Water Spacer		20.00	bbl	8.33	.0	.0	.0	
2	1st Stage HLC Lead Cement	ECONOCEM (TM) SYSTEM (452992)	375.0	sacks	12.8	1.77	9.34		9.34
	9.34 Gal	FRESH WATER							
3	1st Stage Versacem Tail Cement	VARICEM (TM) CEMENT (452009)	380.0	sacks	12.8	1.96	10.95		10.95
	10.95 Gal	FRESH WATER							
4	Fresh Water Displacement		259.00	bbl	8.33	.0	.0	.0	
5	Mud Displacement		0.00	bbl	.	.0	.0	.0	
6	Fresh Water Spacer		40.00	bbl	8.33	.0	.0	.0	
7	2nd Stage Vaersacem Cement	VARICEM (TM) CEMENT (452009)	800.0	sacks	12.8	1.96	10.95		10.95
	10.95 Gal	FRESH WATER							
8	Displacement		100.00	bbl	8.33	.0	.0	.0	
Calculated Values		Pressures		Volumes					
Displacement		Shut In: Instant		Lost Returns		Cement Slurry		Pad	
Top Of Cement		5 Min		Cement Returns		Actual Displacement		Treatment	
Frac Gradient		15 Min		Spacers		Load and Breakdown		Total Job	
Rates									
Circulating		Mixing		7		Displacement		8	
Cement Left In Pipe		Amount 0 ft		Reason		Shoe Joint			
Frac Ring # 1 @		ID		Frac ring # 2 @		ID		Frac Ring # 4 @	
The Information Stated Herein Is Correct				Customer Representative Signature					

The Road to Excellence Starts with Safety

Sold To #: 300721	Ship To #: 2925160	Quote #:	Sales Order #: 9506910
Customer: WPX ENERGY ROCKY MOUNTAIN LLC-EBUS	Customer Rep: Brunk, Andrew		
Well Name: RG	Well #: 414-14-298	API/UWI #: 05-103-11897	
Field: SULPHUR CREEK	City (SAP): SILT	County/Parish: Rio Blanco	State: Colorado
Legal Description:			
Lat: N 39.87 deg. OR N 39 deg. 52 min. 13.386 secs.		Long: W 108.363 deg. OR W -109 deg. 38 min. 12.523 secs.	
Contractor: CYCLONE 29	Rig/Platform Name/Num: CYCLONE 29		
Job Purpose: Cement Multiple Stages			Ticket Amount:
Well Type: Development Well	Job Type: Cement Multiple Stages		
Sales Person: MAYO, MARK	Srv Supervisor: HUGENTOBLE, LOGAN	MBU ID Emp #: 447333	

Activity Description	Date/Time	Cht #	Rate bbl/min	Volume bbl		Pressure psig		Comments
				Stage	Total	Tubing	Casing	
Call Out	05/15/2012 02:30							
Pre-Convoy Safety Meeting	05/15/2012 05:00							ALL HES EMPLOYEES
Arrive At Loc	05/15/2012 07:00							RIG STILL RUNNING CASING
Assessment Of Location Safety Meeting	05/15/2012 07:15							ALL HES EMPLOYEES
Rig-Up Equipment	05/15/2012 07:30							1 HT ELITE PUMP TRUCK, 1 660 BULK TRUCK, 1 9.625" QUICK LATCH PLUG CONTAINER, 1 F 450 P/U, MSC TOOL SUPPLIED BY WEATHERFORD. NO TOOL HAND ON LOCATION
Pre-Job Safety Meeting	05/15/2012 12:45							ALL HES EMPLOYEES, RIG CREW, CO REP.
Start Job	05/15/2012 12:55							TD 3388, TP 3378', FC 33356', HOLE 14.75" TO 1300, 13.5" 1300 TO, MUD WT 8.8 PPG, 1000 BBLS OF H2O ON LOCATION, WATER SAMPLE SUBMITTED. 9.625" CSG 36# SJ 22'. DV TOOL SET AT 1293 FT.
Pump Water	05/15/2012 12:56		2	2			155.0	FILL LINES
Pressure Test	05/15/2012 12:57							3500 PSI NO LEAKS

Activity Description	Date/Time	Cht #	Rate bbl/min	Volume bbl		Pressure psig		Comments
				Stage	Total	Tubing	Casing	
Pump Spacer 1	05/15/2012 13:04		7	20			310.0	FRESH WATER
Pump 1st Stage Lead Slurry	05/15/2012 13:12		7	118			360.0	1ST STAGE 375 SKS ECONOCEM CMT TO BE MIXED AT 12.3 PPG, 2.37 YIELD, 12.94 GAL/SK, CMT TO BE WEIGHED VIA PRESSURE BALANCED MUD SCALES. WET AND DRY SAMPLES SUBMITTED.
Pump 1st Stage Tail Slurry	05/15/2012 13:29		7	132			340.0	1ST STAGE 380 SKS ECONOCEM CMT TO BE MIXED AT 13.5 PPG, 1.81 YIELD, 8.83 GAL/SK, CMT TO BE WEIGHED VIA PRESSURE BALANCED MUD SCALES. WET AND DRY SAMPLES SUBMITTED.
Shutdown	05/15/2012 13:52							ADDED 7 BOXES OF TUFF FIBER IN FIRST 200 BBLS OF CEMENT PER COMP. REP
Drop Plug	05/15/2012 13:56							PLUG LAUNCHED
Pump Displacement	05/15/2012 13:59		8	259			597.0	1ST STAGE DISPLACEMENT, FRESH WATER SLOWED TO 4 BBLS/MIN FOR 20 BBLS WHILE PLUG PASSED TO DV TOOL
Slow Rate	05/15/2012 14:35		4				401.0	10 BBLS PRIOR TO CALCULATED DISPLACEMENT
Bump Plug	05/15/2012 14:38						997.0	PLUG LANDED, NO RETURNS
Check Floats	05/15/2012 14:39							FLOATS HOLDING, NO ANNULAR FLOW TO PIT NOTED
Drop Opening Device For Multiple Stage Cementer	05/15/2012 14:42							DROP BOMB WAIT 10 MINUTES, MSC TOOL PRESSURED UP TO 560 PSI THEN FELL TO 107 PSI.

Activity Description	Date/Time	Cht #	Rate bbl/min	Volume bbl		Pressure psig		Comments
				Stage	Total	Tubing	Casing	
Open Multiple Stage Cementer	05/15/2012 14:52						560.0	GOOD RETURNS, NO CEMENT
Circulate Well	05/15/2012 14:53		6	10			195.0	PUMPED 10 BBLS FRESH WATER, RIG TO CIRCULATE WELL AT 4BBLS/MIN
End Job	05/15/2012 14:55							1ST STAGE COMPLETE, WAIT TIME IS 4 HRS POST BUMPING PLUG
Start Job	05/15/2012 18:45							START 2ND STAGE
Pump Water	05/15/2012 18:47		2	2			101.0	FILL LINES
Pressure Test	05/15/2012 18:49							3500 PSI
Pump Spacer 1	05/15/2012 18:54		7	40			136.0	FRESH WATER
Pump 2nd Stage Tail Slurry	05/15/2012 19:06		7	279			330.0	800 SKS VARICEM CMT TO BE MIXED AT 12.8 PPG, 1.96 YIELD, 10.95 GAL/SK. CMT TO BE WEIGHED VIA PRESSURE BALANCED MUD SCALES. WET AND DRY SAMPLES SUBMITTED.
Shutdown	05/15/2012 19:53							ADDED 45 LBS OF TUFF FIBER LAST 100 BBLS OF CEMENT, TUFF FIBER SUPPLIED BY BAROID, PER COMP. REP
Cement Returns to Surface	05/15/2012 19:55							110 BBLS OF CEMENT TO SURFACE
Drop Plug	05/15/2012 19:57							PLUG LAUNCH
Pump Displacement	05/15/2012 19:58		8	100			591.0	PUMPED FRESHWATER, GOOD RETURNS, 110 BBLS OF CEMENT TO SURFACE
Slow Rate	05/15/2012 20:14		4				360.0	10 BBLS PRIOR TO CALCULATED CEMENT
Activity Description	Date/Time	Cht #	Rate bbl/min	Volume bbl		Pressure psig		Comments
				Stage	Total	Tubing	Casing	

HALLIBURTON

Cementing Job Log

Bump Plug	05/15/2012 20:16						1801. 0	PLUG LANDED PRESSURED UP TO 1800 PSI TO CLOSE MSC TOOL.
Close Multiple Stage Cementer	05/15/2012 20:16							
Release Casing Pressure	05/15/2012 20:17							1/2 BBL RETURNED BACK TO PUMP, PUMP RATES PER COMP REP
End Job	05/15/2012 20:19							THANK YOU FOR USING HES FROM LOGAN HUGENTOBLE AND CREW.
Post-Job Safety Meeting (Pre Rig-Down)	05/15/2012 20:20							ALL HES EMPLOYEES
Rig-Down Equipment	05/15/2012 20:30							SAFELY
Pre-Convoy Safety Meeting	05/15/2012 21:55							ALL HES EMPLOYEES
Crew Leave Location	05/15/2012 22:00							SITE WAS AS CLEAN AS WHEN WE ARRIVED

Sold To # : 300721

Ship To # : 2925160

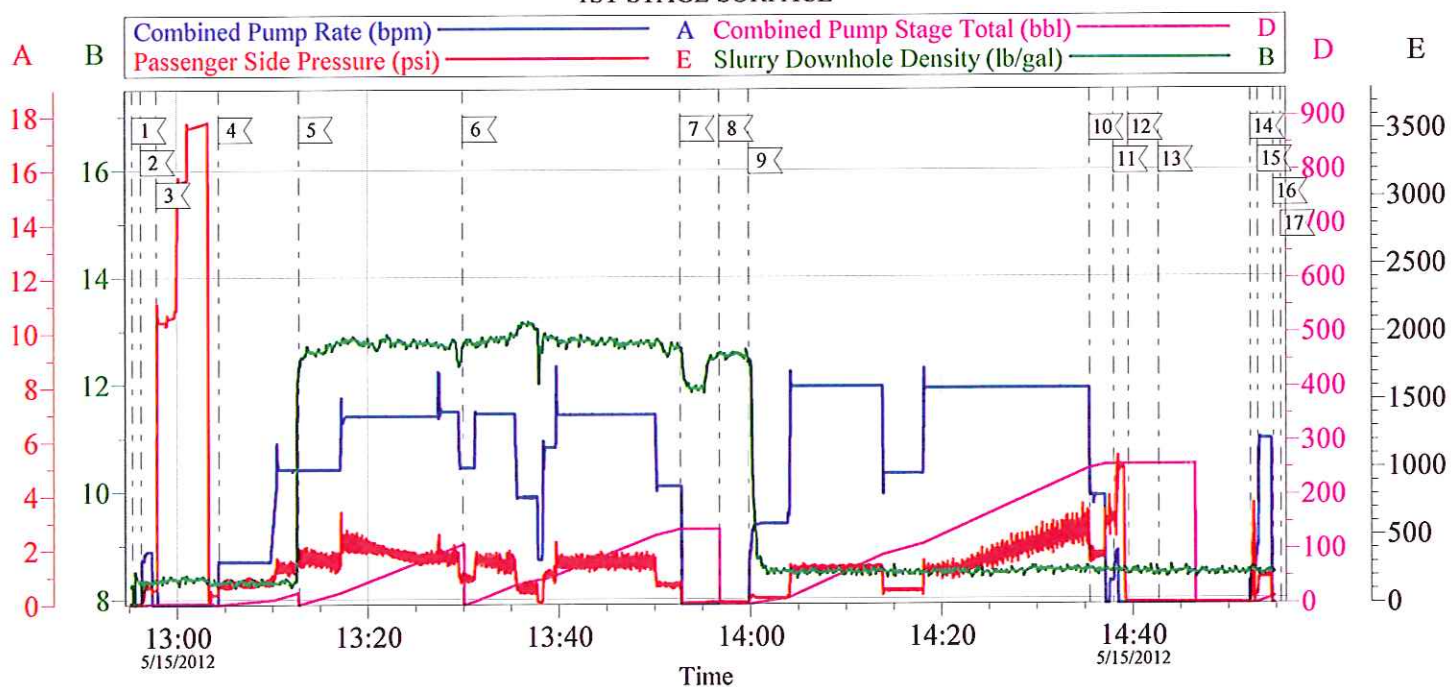
Quote # :

Sales Order # : 9506910

SUMMIT Version: 7.3.0021

Monday, May 28, 2012 01:14:00

WPX- RG 414-14-298 1ST STAGE SURFACE

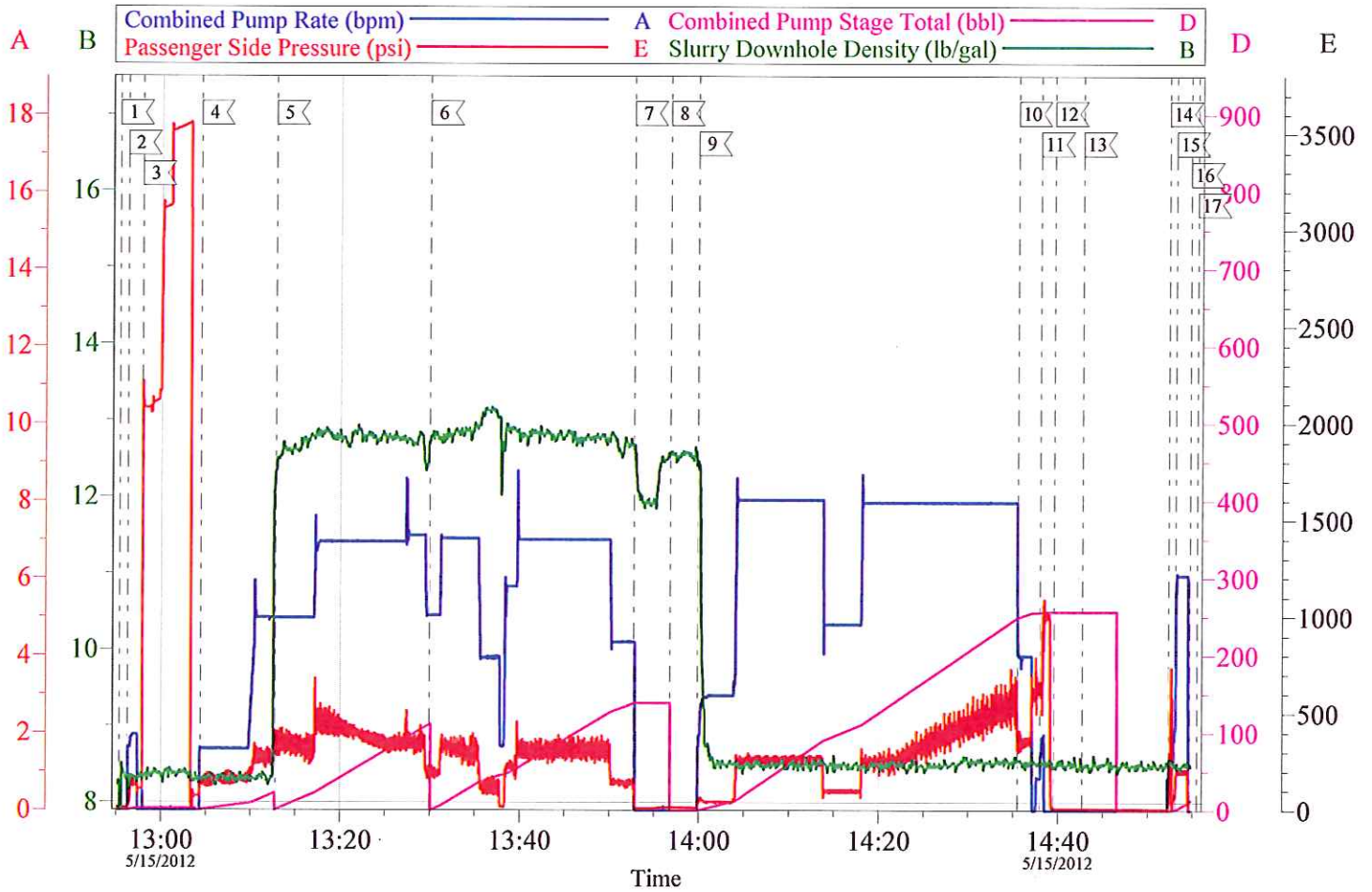


Local Event Log			
1 START JOB	12:55:21	2 PRIME LINES	12:56:13
3 PRESSURE TEST	12:57:51		
4 PUMP H2O SPACER	13:04:24	5 PUMP LEAD CEMENT	13:12:48
6 PUMP TAIL CEMENT	13:29:56		
7 SHUTDOWN	13:52:44	8 DROP PLUG	13:56:46
9 PUMP DISPLACEMENT	13:59:50		
10 SLOW RATE	14:35:30	11 BUMP PLUG	14:38:01
12 CHECK FLOATS	14:39:32		
13 DROP OPENING TOOL	14:42:42	14 OPEN DV TOOL	14:52:18
15 CIRCULATE WELL	14:53:04		
16 SHUTDOWN	14:54:42	17 END JOB	14:55:28

Customer: Halliburton	Job Date: 15-May-2012	Sales Order #: 9506910
Well Description: RG 414-14-298	Job Type: 1ST STAGE	ADC Used: YES
Company Rep: ANDREW BRUNK	Cement Supervisor: LOGAN HUGENTOBLE	Elite #7: AARON SILVERTHORN

OptiCem v6.4.10
15-May-12 15:38

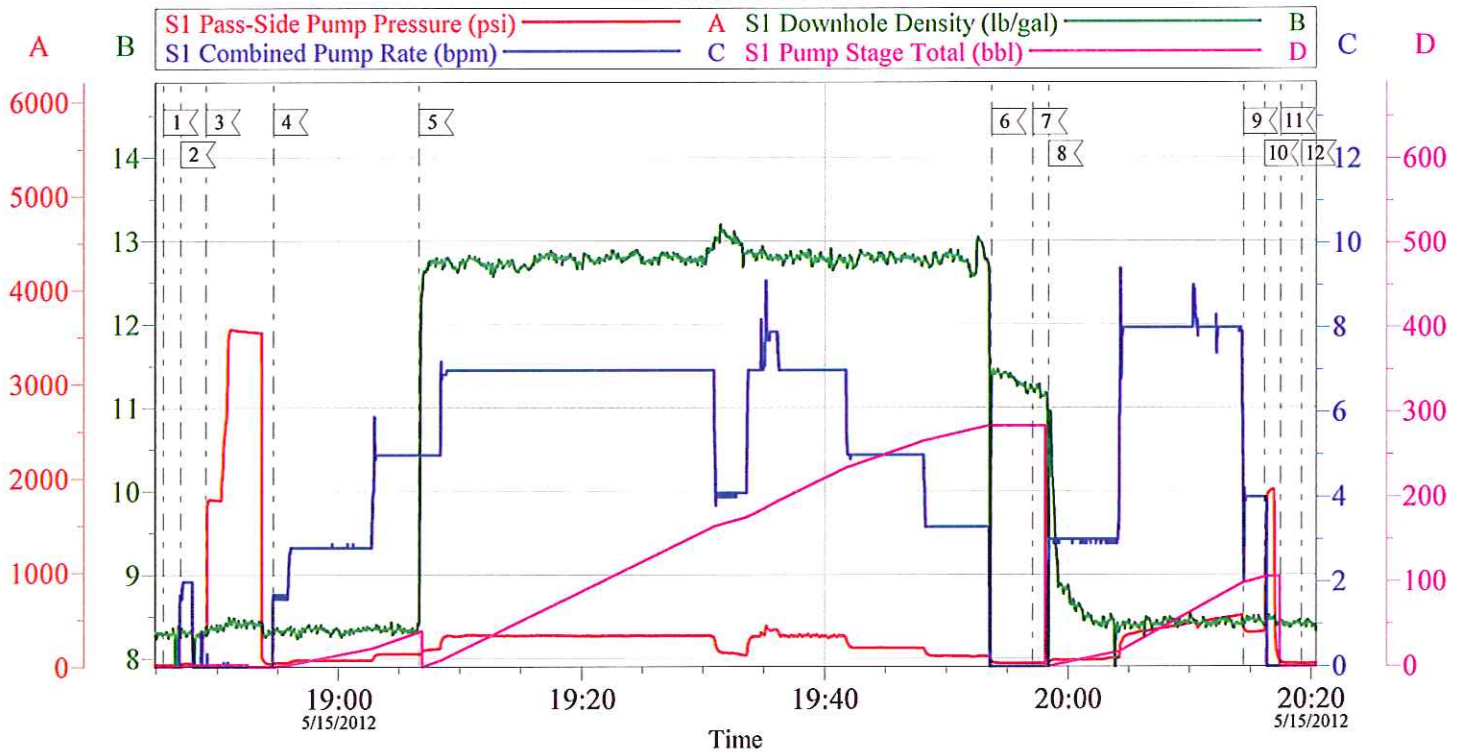
WPX- RG 414-14-298 1ST STAGE SURFACE



Customer: Halliburton	Job Date: 15-May-2012	Sales Order #: 9506910
Well Description: RG 414-14-298	Job Type: 1ST STAGE	ADC Used: YES
Company Rep: ANDREW BRUNK	Cement Supervisor: LOGAN HUGENTOBLE	Elite #: AARON SILVERTHORN

OptiCem v6.4.10
15-May-12 15:40

WPX- RG 414-14-298 2ND STAGE SURFACE

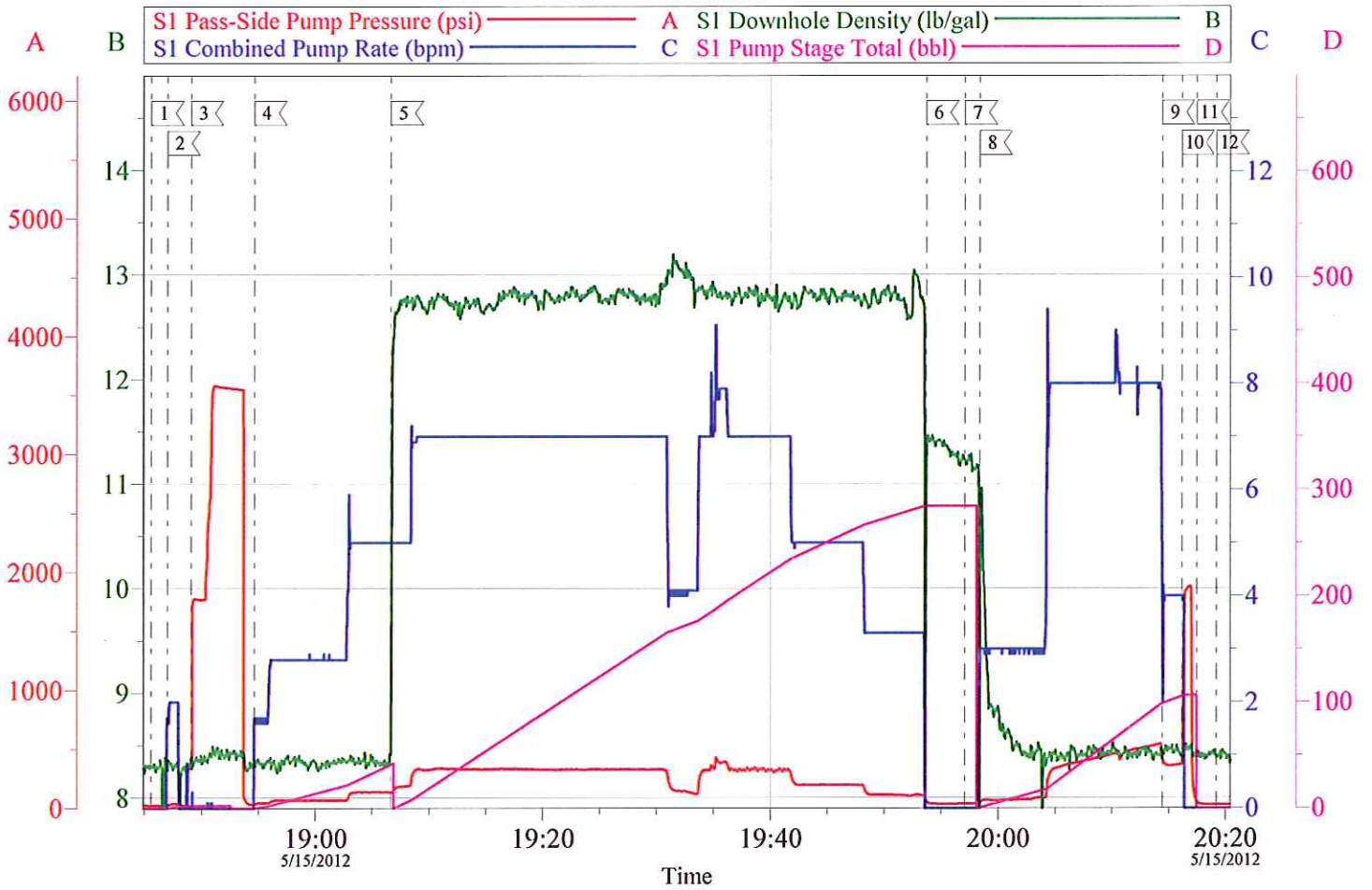


Local Event Log			
1 START JOB	18:45:35	2 PRIME LINES	18:47:00
3 PRESSURE TEST	18:49:04	4 PUMP H2O SPACER	18:53:41
5 PUMP TAIL CEMENT	19:06:39	6 SHUTDOWN	19:53:41
7 DROP PLUG	19:57:04	8 PUMP DISPLACEMENT	19:58:22
9 SLOW RATE	20:14:25	10 BUMP PLUG/CLOSE TOOL	20:16:09
11 CHECK FLOATS	20:17:29	12 END JOB	20:19:13

Customer: WPX	Job Date: 15-May-2012	Sales Order #: 9506910
Well Description: 414-14-298	Job Type: 2ND STAGE	ADC Used: YES
Company Rep: ANDREW BRUNK	Cement Supervisor: LOGAN HUGENTOBLE	Elite #: AARON SILVERTHORN

OptiCem v6.4.10
15-May-12 20:40

WPX- RG 414-14-298 2ND STAGE SURFACE



Customer: WPX	Job Date: 15-May-2012	Sales Order #: 9506910
Well Description: 414-14-298	Job Type: 2ND STAGE	ADC Used: YES
Company Rep: ANDREW BRUNK	Cement Supervisor: LOGAN HUGENTOBLE	Elite #7: AARON SILVERTHORN

OptiCem v6.4.10
15-May-12 20:43