

The Road to Excellence Starts with Safety

Sold To #: 300721		Ship To #: 300721		Quote #:		Sales Order #: 9069092	
Customer: WILLIAMS PRODUCTION RMT INC - EBUS				Customer Rep: Towers, Ron			
Well Name: RWF		Well #: 322-32		API/UWI #: 05-045-21046			
Field: RULISON		City (SAP): Rulison		County/Parish: Garfield		State: Colorado	
Lat: N 39.486 deg. OR N 39 deg. 29 min. 8.596 secs.				Long: W 107.916 deg. OR W -108 deg. 5 min. 3.43 secs.			
Contractor: CYCLONE 17		Rig/Platform Name/Num: CYCLONE 17					
Job Purpose: Cement Surface Casing							
Well Type: Development Well				Job Type: Cement Surface Casing			
Sales Person: SCOTT, KYLE		Srv Supervisor: STILLSON, ERIC		MBU ID Emp #: 393789			
Job Personnel							
HES Emp Name	Exp Hrs	Emp #	HES Emp Name	Exp Hrs	Emp #	HES Emp Name	Exp Hrs
PARKER, BRANDON	6	503646	STILLSON, ERIC W	6	393789	TRIPLETT, MICHEAL Anthony	6
WEAVER, CARLTON Russell	6	457698					
Equipment							
HES Unit #	Distance-1 way	HES Unit #	Distance-1 way	HES Unit #	Distance-1 way	HES Unit #	Distance-1 way
10205677	60 mile	10567589C	60 mile	10784053	60 mile	10951246	60 mile
10995027	60 mile	11057894	60 mile				
Job Hours							
Date	On Location Hours	Operating Hours	Date	On Location Hours	Operating Hours	Date	On Location Hours
12-07-11	6	1					
TOTAL		Total is the sum of each column separately					
Job				Job Times			
Formation Name				Date	Time	Time Zone	
Formation Depth (MD)	Top	Bottom		Called Out	07 - Dec - 2011	07:00	MST
Form Type	BHST			On Location	07 - Dec - 2011	11:00	MST
Job depth MD	1165. ft	Job Depth TVD	1165. ft	Job Started	07 - Dec - 2011	15:27	MST
Water Depth		Wk Ht Above Floor	4. ft	Job Completed	07 - Dec - 2011	16:21	MST
Perforation Depth (MD)	From	To		Departed Loc	07 - Dec - 2011	17:30	MST
Well Data							
Description	New / Used	Max pressure psig	Size in	ID in	Weight lbm/ft	Thread	Grade
OPEN HOLE				14.			
SURFACE CASING	Unknown		9.625	9.001	32.3		
Sales/Rental/3 rd Party (HES)							
Description	Qty	Qty uom	Depth	Supplier			
PLUG,CMTG,TOP,9 5/8,HWE,8.16 MIN/9.06 MA	1	EA					
Tools and Accessories							
Type	Size	Qty	Make	Depth	Type	Size	Qty
Guide Shoe					Packer		
Float Shoe					Bridge Plug		
Float Collar					Retainer		
Insert Float							
Stage Tool							
Miscellaneous Materials							
Gelling Agt		Conc		Surfactant		Conc	
Treatment Fld		Conc		Inhibitor		Conc	
Acid Type		Qty	Conc	Sand Type		Size	Qty

Fluid Data									
Stage/Plug #: 1									
Fluid #	Stage Type	Fluid Name	Qty	Qty uom	Mixing Density lbm/gal	Yield ft ³ /sk	Mix Fluid Gal/sk	Rate bbl/min	Total Mix Fluid Gal/sk
1	Fresh Water		20.00	bbl	8.33	.0	.0	4	
2	Lead Cement	VERSACEM (TM) SYSTEM (452010)	160.0	sacks	12.3	2.38	13.75	8	13.75
3	Tail Cement	VERSACEM (TM) SYSTEM (452010)	160.0	sacks	12.8	2.11	11.75	8	11.75
4	Displacement Fluid		87.00	bbl	8.33	.0	.0	10.0	
Calculated Values		Pressures		Volumes					
Displacement	87.4	Shut In: Instant		Lost Returns	0	Cement Slurry	128	Pad	
Top Of Cement	SURFACE	5 Min		Cement Returns	20	Actual Displacement	87.4	Treatment	
Frac Gradient		15 Min		Spacers	20	Load and Breakdown		Total Job	
Rates									
Circulating		Mixing	8	Displacement	10	Avg. Job	8		
Cement Left In Pipe	Amount	43 ft	Reason	Shoe Joint					
Frac Ring # 1 @	ID	Frac ring # 2 @	ID	Frac Ring # 3 @	ID	Frac Ring # 4 @	ID		
The Information Stated Herein Is Correct				Customer Representative Signature					

The Road to Excellence Starts with Safety

Sold To #: 300721		Ship To #: 300721		Quote #:		Sales Order #: 9069092	
Customer: WILLIAMS PRODUCTION RMT INC - EBUS				Customer Rep: Towers, Ron			
Well Name: RWF			Well #: 322-32			API/UWI #: 05-045-21046	
Field: RULISON		City (SAP): Rulison		County/Parish: Garfield			State: Colorado
Legal Description:							
Lat: N 39.486 deg. OR N 39 deg. 29 min. 8.596 secs.				Long: W 107.916 deg. OR W -108 deg. 5 min. 3.43 secs.			
Contractor: CYCLONE 17			Rig/Platform Name/Num: CYCLONE 17				
Job Purpose: Cement Surface Casing						Ticket Amount:	
Well Type: Development Well			Job Type: Cement Surface Casing				
Sales Person: SCOTT, KYLE			Srv Supervisor: STILLSON, ERIC			MBU ID Emp #: 393789	

Activity Description	Date/Time	Cht #	Rate bbl/min	Volume bbl		Pressure psig		Comments
				Stage	Total	Tubing	Casing	
Call Out	12/07/2011 07:00							
Pre-Convoy Safety Meeting	12/07/2011 09:00							ENTIRE CREW, OBSERVE ALL SAFE DRIVING PROCEDURES
Arrive At Loc	12/07/2011 11:00							ARRIVED EARLY. RIG JUST STARTING CASING.
Assessment Of Location Safety Meeting	12/07/2011 14:00							REVIEWED EMERGENCY PLAN, ASSESSED WORK AREA AND SPOTTED EQUIPMENT.
Pre-Rig Up Safety Meeting	12/07/2011 14:25							ENTIRE CREW, WALKED THROUGH RIG UP LOOKING FOR HAZARDS.
Rig-Up Equipment	12/07/2011 14:30							1 PICK UP, 1 HT400 PUMP TRUCK, 1 660 BULK CEMENT TRUCK, 1 QUICK LATCH HEAD WITH PLUG, BROUGHT IRON TRAILER PER CO REP, DID NOT USE.
Pre-Job Safety Meeting	12/07/2011 15:00							ENTIRE CREW, CO REP AND RIG CREW.
Start Job	12/07/2011 15:27							TD 1165 TP 1153 SJ 43 FC 1110 MW 10.5 PPG, 9 5/8 32.3# CASING IN 14" HOLE. RIG CIRC APPROX 1 HR, YP 23,PV 38,TEMP 90,
Pump Water	12/07/2011 15:27		1	1			38.0	FILL LINES BEFORE TESTING

Sold To #: 300721

Ship To #: 300721

Quote #:

Sales Order #: 9069092

SUMMIT Version: 7.2.27

Saturday, December 10, 2011 11:01:00

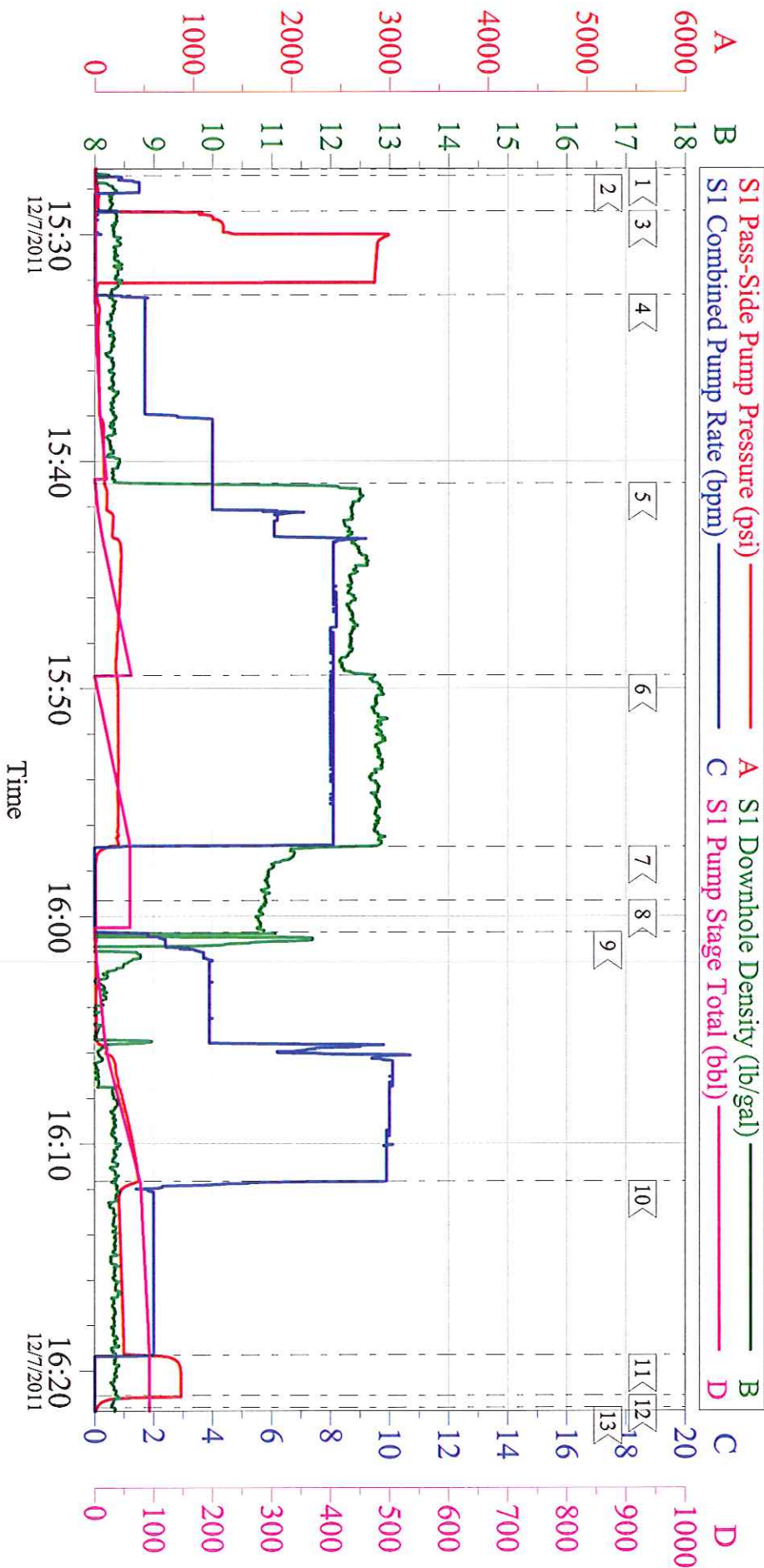
Cementing Job Log

Activity Description	Date/Time	Cht #	Rate bbl/min	Volume bbl		Pressure psig		Comments
				Stage	Total	Tubing	Casing	
Pressure Test	12/07/2011 15:28		0.5	0.1			2860.0	HELD PRESSURE FOR 2 MIN, PRESSURE HELD, NO LEAKS.
Pump Spacer 1	12/07/2011 15:32		4	20			97.0	FRESH WATER, PUMPED AT 2 BPM UNTIL CEMENT TUB UP TO WEIGHT AND WEIGHED WITH SCALES, SPED RATE TO 4 BPM AT 10 BBLS GONE.
Pump Lead Cement	12/07/2011 15:40		8	67.8			265.0	160 SKS VERSACEM, 12.3 PPG, 2.38 CUFT/SK, 13.75 GAL/SK. WALKED RATE UP TO 8 BPM IN THE FIRST 13 BBLS.
Pump Tail Cement	12/07/2011 15:49		8	60.1			240.0	160 SKS VERSACEM, 12.8 PPG, 2.11 CUFT/SK, 11.75 GAL/SK.
Shutdown	12/07/2011 15:56							WASH UP ON PLUG PER CO REP
Drop Top Plug	12/07/2011 15:59							VARIFIED PLUG LEFT CONTAINER.
Pump Displacement	12/07/2011 16:00		10	87.4			450.0	FRESH WATER, CEMENT TO SURFACE AT 67 BBLS GONE, 20 BBLS OF CEMENT TO SURFACE. USED 40 LBS SUGAR.
Slow Rate	12/07/2011 16:11		2	77			300.0	SLOWED RATE TO 2 BPM TO BUMP PLUG.
Bump Plug	12/07/2011 16:19		2	87.4			878.0	BBL COUNTER OFF, READ 93 BBLS PUMPED DUE TO OPERATOR NOT HAVING VALVE TO PS PUMP OPEN AT THE START OF DISPLACEMENT.
Check Floats	12/07/2011 16:21							FLOATS HELD, WHEN RELEASED PRESSURE GOT 1/2 BBL OF WATER BACK TO TRUCK.

Activity Description	Date/Time	Cht #	Rate bbl/ min	Volume bbl		Pressure psig		Comments
				Stage	Total	Tubing	Casing	
End Job	12/07/2011 16:22							GOOD RETURNS THROUGHOUT, DID NOT RECIPROCATATE PIPE.
Post-Job Safety Meeting (Pre Rig-Down)	12/07/2011 16:25							ENTIRE CREW
Rig-Down Equipment	12/07/2011 16:45							
Pre-Convoy Safety Meeting	12/07/2011 17:25							ENTIRE CREW, OBSERVE ALL SAFE DRIVING PROCEDURES
Crew Leave Location	12/07/2011 17:30							THANK YOU FOR USING HALLIBURTON, ERIC STILLSON AND CREW.

WILLIAMS - RWF 322-32

9 5/8 SURFACE



Local Event Log

1 < START JOB	15:27:09	2 < FILL LINES	15:27:25	3 < TEST LINES	15:28:59
4 < PUMP WATER SPACER	15:32:41	5 < PUMP LEAD CEMENT	15:40:59	6 < PUMP TAIL CEMENT	15:49:25
7 < SHUTDOWN	15:56:57	8 < DROP PLUG	15:59:19	9 < PUMP DISPLACEMENT	16:00:42
10 < SLOW RATE	16:11:38	11 < BUMP PLUG	16:19:17	12 < CHECK FLOATS	16:21:04
13 < END JOB	16:21:36				

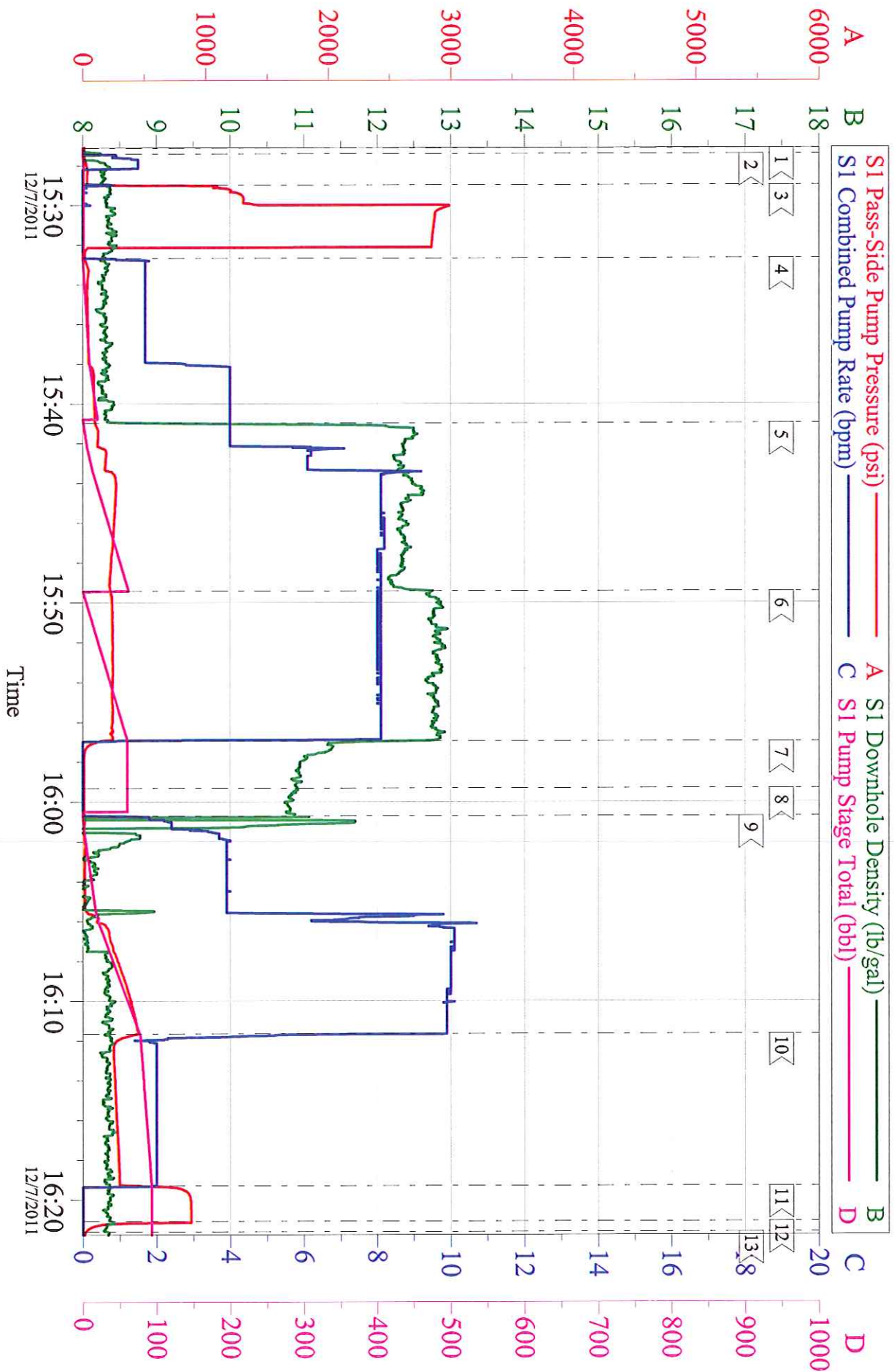
Customer: WILLIAMS
Well Description: RWF 322-32
Company Rep: RON TOWERS

Job Date: 07-Dec-2011
Job Type: SURFACE
Cement Supervisor: ERIC STILLSON

Sales Order #: 9069092
ADC Used: YES
Elite #3: RUSTY WEAVER

WILLIAMS - RWF 322-32

9 5/8 SURFACE



Customer: WILLIAMS
Well Description: RWF 322-32
Company Rep: RON TOWERS

Job Date: 07-Dec-2011
Job Type: SURFACE
Cement Supervisor: ERIC STILLSON

Sales Order #: 9069092
ADC Used: YES
Elite #3: RUSTY WEAVER