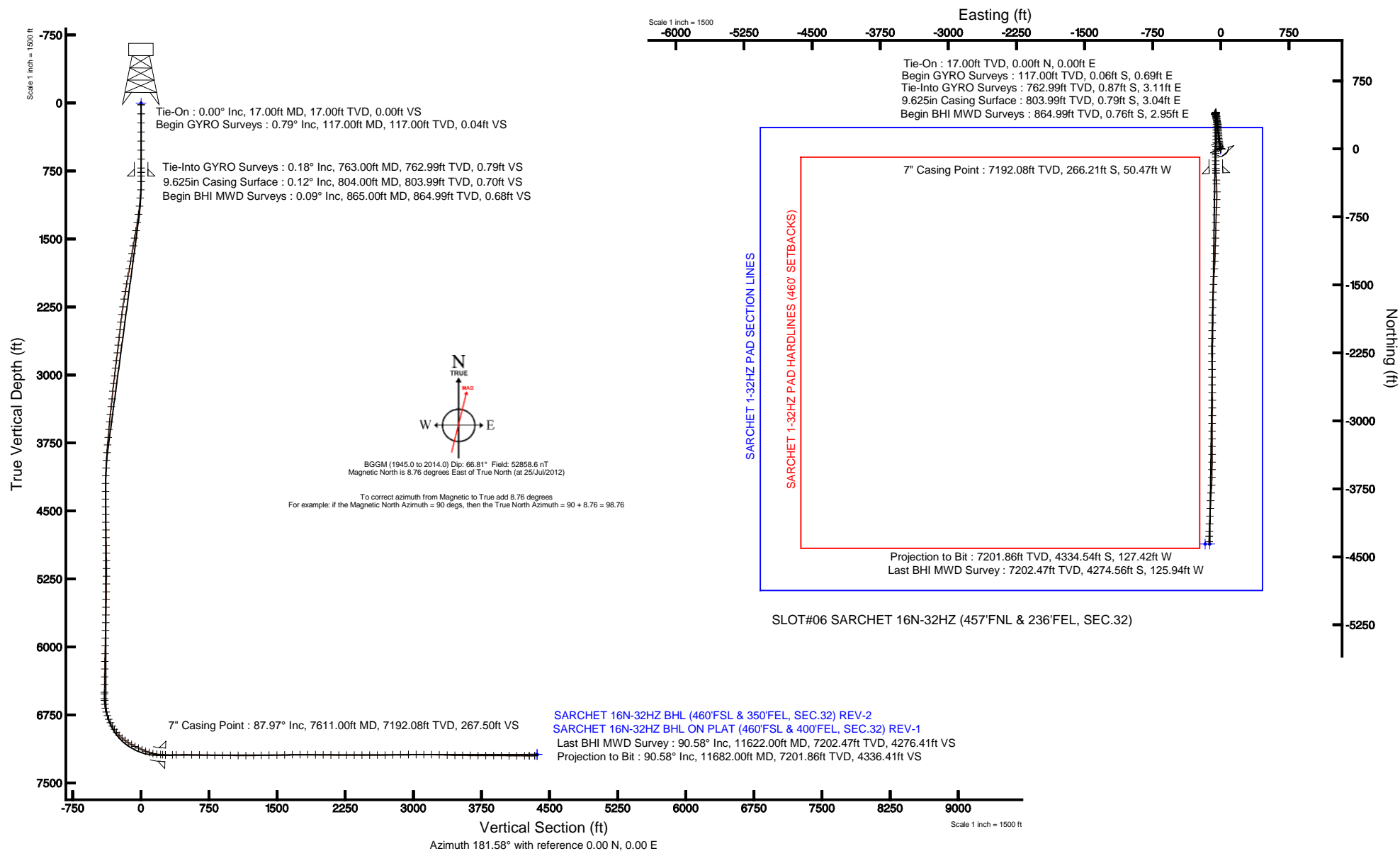


KERR-MCGEE OIL & GAS ONSHORE LP

Location: COLORADO Slot: SLOT#06 SARCHET 16N-32HZ (457'FNL & 236'FEL, SEC.32)
 Field: WELD COUNTY (KERR MCGEE) Well: SARCHET 16N-32HZ
 Facility: SEC.32-T3N-R66W Wellbore: SARCHET 16N-32HZ PWB

Plot reference wellpath is SARCHET 16N-32HZ (REV-B.0) PWP	
True vertical depths are referenced to XTREME 8 (RKB)	Grid System: NAD83 / Lambert Colorado SP, Northern Zone (501), US feet
Measured depths are referenced to XTREME 8 (RKB)	North Reference: True north
XTREME 8 (RKB) to Mean Sea Level: 4941 feet	Scale: True distance
Mean Sea Level to Mud line (At Slot: SLOT#06 SARCHET 16N-32HZ (457'FNL & 236'FEL, SEC.32)): 0 feet	Depths are in feet
Coordinates are in feet referenced to Slot	Created by: augunora on 12/Sep/2012





Actual Wellpath Report

SARCHET 16N-32HZ AWP

Page 1 of 7



REFERENCE WELLPATH IDENTIFICATION

Operator	KERR-MCGEE OIL & GAS ONSHORE LP	Slot	SLOT#06 SARCHET 16N-32HZ (457'FNL & 236'FEL, SEC.32)
Area	COLORADO	Well	SARCHET 16N-32HZ
Field	WELD COUNTY (KERR MCGEE)	Wellbore	SARCHET 16N-32HZ AWB
Facility	SEC.32-T3N-R66W		

REPORT SETUP INFORMATION

Projection System	NAD83 / Lambert Colorado SP, Northern Zone (501), US feet	Software System	WellArchitect@ 3.0.0
North Reference	True	User	Augunora
Scale	0.999957	Report Generated	12/Sep/2012 at 14:55
Convergence at slot	0.46° East	Database/Source file	WA_ANADARKO/SARCHET_16N-32HZ_AWB.xml

WELLPATH LOCATION

	Local coordinates		Grid coordinates		Geographic coordinates	
	North[ft]	East[ft]	Easting[US ft]	Northing[US ft]	Latitude	Longitude
Slot Location	4637.75	1150.10	3197675.00	1311903.36	40°11'14.662"N	104°47'32.831"W
Facility Reference Pt			3196561.77	1307256.85	40°10'28.832"N	104°47'47.650"W
Field Reference Pt			3197771.84	1268891.29	40°04'09.600"N	104°47'36.000"W

WELLPATH DATUM

Calculation method	Minimum curvature	XTREME 8 (RKB) to Facility Vertical Datum	4941.00ft
Horizontal Reference Pt	Slot	XTREME 8 (RKB) to Mean Sea Level	4941.00ft
Vertical Reference Pt	XTREME 8 (RKB)	XTREME 8 (RKB) to Mud Line at Slot (SLOT#06 SARCHET 16N-32HZ (457'FNL & 236'FEL, SEC.32))	4941.00ft
MD Reference Pt	XTREME 8 (RKB)	Section Origin	N 0.00, E 0.00 ft
Field Vertical Reference	Mean Sea Level	Section Azimuth	181.68°



Actual Wellpath Report

SARCHET 16N-32HZ AWP

Page 2 of 7



REFERENCE WELLPATH IDENTIFICATION

Operator	KERR-MCGEE OIL & GAS ONSHORE LP	Slot	SLOT#06 SARCHET 16N-32HZ (457'FNL & 236'FEL, SEC.32)
Area	COLORADO	Well	SARCHET 16N-32HZ
Field	WELD COUNTY (KERR MCGEE)	Wellbore	SARCHET 16N-32HZ AWB
Facility	SEC.32-T3N-R66W		

WELLPATH DATA (153 stations) † = interpolated/extrapolated station

MD [ft]	Inclination [°]	Azimuth [°]	TVD [ft]	Vert Sect [ft]	North [ft]	East [ft]	Latitude	Longitude	DLS [°/100ft]	Comments
0.00†	0.000	94.970	0.00	0.00	0.00	0.00	40°11'14.662"N	104°47'32.831"W	0.00	
17.00	0.000	94.970	17.00	0.00	0.00	0.00	40°11'14.662"N	104°47'32.831"W	0.00	Tie-On
117.00	0.790	94.970	117.00	0.04	-0.06	0.69	40°11'14.661"N	104°47'32.822"W	0.79	Begin GYRO Surveys
217.00	0.240	154.850	216.99	0.27	-0.31	1.46	40°11'14.659"N	104°47'32.812"W	0.70	
317.00	0.480	83.400	316.99	0.39	-0.45	1.97	40°11'14.658"N	104°47'32.806"W	0.46	
417.00	0.200	161.670	416.99	0.50	-0.57	2.44	40°11'14.656"N	104°47'32.800"W	0.48	
517.00	0.330	96.070	516.99	0.68	-0.76	2.78	40°11'14.654"N	104°47'32.795"W	0.31	
617.00	0.140	189.920	616.99	0.83	-0.91	3.05	40°11'14.653"N	104°47'32.792"W	0.37	
717.00	0.120	50.040	716.99	0.88	-0.97	3.10	40°11'14.652"N	104°47'32.791"W	0.24	
763.00	0.180	330.160	762.99	0.78	-0.87	3.11	40°11'14.653"N	104°47'32.791"W	0.43	Tie-Into GYRO Surveys
865.00	0.090	254.000	864.99	0.67	-0.76	2.95	40°11'14.655"N	104°47'32.793"W	0.18	Begin BHI MWD Surveys
956.00	3.480	347.730	955.93	-1.99	1.92	2.29	40°11'14.681"N	104°47'32.801"W	3.83	
1047.00	5.200	332.390	1046.67	-8.27	8.28	-0.21	40°11'14.744"N	104°47'32.834"W	2.26	
1138.00	6.680	340.900	1137.18	-16.81	16.93	-3.85	40°11'14.829"N	104°47'32.881"W	1.89	
1229.00	8.360	344.060	1227.40	-28.07	28.30	-7.40	40°11'14.942"N	104°47'32.926"W	1.90	
1319.00	9.410	350.640	1316.32	-41.52	41.85	-10.39	40°11'15.076"N	104°47'32.965"W	1.62	
1410.00	9.730	351.560	1406.05	-56.39	56.79	-12.73	40°11'15.223"N	104°47'32.995"W	0.39	
1495.00	9.970	352.660	1489.80	-70.73	71.20	-14.72	40°11'15.366"N	104°47'33.021"W	0.36	
1581.00	10.090	351.370	1574.48	-85.50	86.03	-16.81	40°11'15.512"N	104°47'33.048"W	0.30	
1666.00	9.840	349.030	1658.20	-99.91	100.52	-19.31	40°11'15.655"N	104°47'33.080"W	0.56	
1752.00	10.060	349.110	1742.91	-114.41	115.11	-22.12	40°11'15.800"N	104°47'33.116"W	0.26	
1837.00	9.970	357.570	1826.62	-129.00	129.75	-23.84	40°11'15.944"N	104°47'33.138"W	1.73	
1922.00	9.880	357.430	1910.34	-143.61	144.39	-24.48	40°11'16.089"N	104°47'33.146"W	0.11	
2008.00	9.670	357.920	1995.10	-158.17	158.98	-25.07	40°11'16.233"N	104°47'33.154"W	0.26	
2093.00	9.650	356.340	2078.89	-172.39	173.22	-25.78	40°11'16.374"N	104°47'33.163"W	0.31	
2178.00	9.080	353.740	2162.76	-186.13	187.00	-26.97	40°11'16.510"N	104°47'33.178"W	0.83	
2264.00	8.690	355.230	2247.73	-199.30	200.22	-28.25	40°11'16.641"N	104°47'33.195"W	0.53	
2349.00	7.730	353.490	2331.85	-211.34	212.30	-29.43	40°11'16.760"N	104°47'33.210"W	1.17	
2434.00	7.320	353.510	2416.12	-222.36	223.36	-30.69	40°11'16.869"N	104°47'33.226"W	0.48	
2520.00	6.160	353.860	2501.53	-232.35	233.39	-31.80	40°11'16.968"N	104°47'33.241"W	1.35	
2605.00	5.950	0.350	2586.05	-241.28	242.33	-32.27	40°11'17.057"N	104°47'33.247"W	0.84	
2690.00	6.870	9.860	2670.52	-250.71	251.74	-31.37	40°11'17.150"N	104°47'33.235"W	1.65	
2776.00	7.300	359.490	2755.87	-261.26	262.28	-30.54	40°11'17.254"N	104°47'33.224"W	1.57	
2861.00	7.180	347.710	2840.20	-271.82	272.87	-31.71	40°11'17.358"N	104°47'33.240"W	1.75	
2946.00	6.790	346.920	2924.57	-281.83	282.95	-33.98	40°11'17.458"N	104°47'33.269"W	0.47	
3032.00	6.710	346.560	3009.97	-291.60	292.79	-36.30	40°11'17.555"N	104°47'33.299"W	0.11	
3117.00	7.000	345.510	3094.36	-301.36	302.63	-38.75	40°11'17.653"N	104°47'33.330"W	0.37	
3202.00	6.140	342.330	3178.80	-310.63	311.98	-41.43	40°11'17.745"N	104°47'33.365"W	1.10	
3287.00	6.760	340.990	3263.26	-319.60	321.04	-44.44	40°11'17.835"N	104°47'33.404"W	0.75	
3373.00	7.330	344.870	3348.62	-329.58	331.12	-47.52	40°11'17.934"N	104°47'33.443"W	0.86	
3458.00	5.940	346.150	3433.04	-339.01	340.63	-49.98	40°11'18.028"N	104°47'33.475"W	1.64	
3543.00	5.230	348.870	3517.64	-347.03	348.70	-51.79	40°11'18.108"N	104°47'33.498"W	0.89	
3628.00	4.830	350.480	3602.31	-354.32	356.03	-53.13	40°11'18.180"N	104°47'33.516"W	0.50	
3714.00	5.470	354.890	3687.97	-361.94	363.68	-54.09	40°11'18.256"N	104°47'33.528"W	0.87	
3799.00	4.450	354.120	3772.65	-369.23	371.00	-54.79	40°11'18.328"N	104°47'33.537"W	1.20	



Actual Wellpath Report

SARCHET 16N-32HZ AWP

Page 3 of 7



REFERENCE WELLPATH IDENTIFICATION

Operator	KERR-MCGEE OIL & GAS ONSHORE LP	Slot	SLOT#06 SARCHET 16N-32HZ (457'FNL & 236'FEL, SEC.32)
Area	COLORADO	Well	SARCHET 16N-32HZ
Field	WELD COUNTY (KERR MCGEE)	Wellbore	SARCHET 16N-32HZ AWB
Facility	SEC.32-T3N-R66W		

WELLPATH DATA (153 stations)

MD [ft]	Inclination [°]	Azimuth [°]	TVD [ft]	Vert Sect [ft]	North [ft]	East [ft]	Latitude	Longitude	DLS [°/100ft]	Comments
3884.00	3.810	352.100	3857.43	-375.28	377.08	-55.51	40°11'18.388"N	104°47'33.546"W	0.77	
3969.00	3.210	352.640	3942.27	-380.42	382.23	-56.21	40°11'18.439"N	104°47'33.555"W	0.71	
4055.00	2.700	348.450	4028.15	-384.77	386.61	-56.92	40°11'18.482"N	104°47'33.564"W	0.64	
4140.00	2.640	347.840	4113.06	-388.62	390.48	-57.73	40°11'18.521"N	104°47'33.575"W	0.08	
4225.00	1.180	329.280	4198.01	-391.26	393.15	-58.59	40°11'18.547"N	104°47'33.586"W	1.84	
4311.00	0.680	218.750	4284.00	-391.60	393.51	-59.37	40°11'18.551"N	104°47'33.596"W	1.81	
4396.00	0.870	236.470	4368.99	-390.82	392.76	-60.22	40°11'18.543"N	104°47'33.607"W	0.36	
4481.00	0.900	227.790	4453.98	-389.99	391.96	-61.25	40°11'18.535"N	104°47'33.620"W	0.16	
4566.00	1.150	244.140	4538.97	-389.13	391.14	-62.51	40°11'18.527"N	104°47'33.636"W	0.45	
4652.00	1.360	236.510	4624.95	-388.14	390.20	-64.14	40°11'18.518"N	104°47'33.657"W	0.31	
4737.00	1.040	195.170	4709.93	-386.81	388.90	-65.18	40°11'18.505"N	104°47'33.671"W	1.06	
4822.00	0.620	168.780	4794.92	-385.61	387.70	-65.30	40°11'18.493"N	104°47'33.672"W	0.66	
4907.00	0.910	193.140	4879.92	-384.50	386.59	-65.36	40°11'18.482"N	104°47'33.673"W	0.51	
4993.00	0.940	197.630	4965.91	-383.16	385.25	-65.73	40°11'18.469"N	104°47'33.678"W	0.09	
5078.00	0.780	188.790	5050.90	-381.91	384.02	-66.03	40°11'18.457"N	104°47'33.682"W	0.24	
5164.00	0.780	71.040	5136.89	-381.54	383.63	-65.56	40°11'18.453"N	104°47'33.676"W	1.55	
5249.00	0.820	64.550	5221.88	-382.02	384.08	-64.47	40°11'18.457"N	104°47'33.662"W	0.12	
5334.00	1.030	63.710	5306.87	-382.65	384.68	-63.23	40°11'18.463"N	104°47'33.646"W	0.25	
5420.00	0.930	45.860	5392.86	-383.52	385.51	-62.04	40°11'18.472"N	104°47'33.630"W	0.37	
5505.00	1.260	37.540	5477.85	-384.77	386.73	-60.98	40°11'18.484"N	104°47'33.617"W	0.43	
5591.00	1.100	29.560	5563.83	-386.27	388.20	-59.99	40°11'18.498"N	104°47'33.604"W	0.27	
5676.00	1.060	38.330	5648.81	-387.62	389.52	-59.10	40°11'18.511"N	104°47'33.593"W	0.20	
5761.00	1.190	33.670	5733.80	-389.00	390.87	-58.13	40°11'18.525"N	104°47'33.580"W	0.19	
5847.00	1.320	26.870	5819.77	-390.65	392.50	-57.18	40°11'18.541"N	104°47'33.568"W	0.23	
5932.00	1.360	21.850	5904.75	-392.48	394.31	-56.36	40°11'18.559"N	104°47'33.557"W	0.15	
6017.00	1.590	25.340	5989.72	-394.51	396.31	-55.48	40°11'18.578"N	104°47'33.546"W	0.29	
6103.00	1.450	37.680	6075.69	-396.48	398.25	-54.31	40°11'18.598"N	104°47'33.531"W	0.41	
6188.00	1.170	31.400	6160.67	-398.11	399.84	-53.20	40°11'18.613"N	104°47'33.516"W	0.37	
6273.00	0.930	11.740	6245.66	-399.54	401.26	-52.61	40°11'18.627"N	104°47'33.509"W	0.51	
6359.00	0.850	20.300	6331.65	-400.83	402.54	-52.24	40°11'18.640"N	104°47'33.504"W	0.18	
6444.00	0.530	0.560	6416.64	-401.82	403.53	-52.02	40°11'18.650"N	104°47'33.501"W	0.46	
6530.00	0.620	345.970	6502.64	-402.67	404.38	-52.13	40°11'18.658"N	104°47'33.503"W	0.20	
6548.00	0.460	352.860	6520.64	-402.83	404.54	-52.16	40°11'18.660"N	104°47'33.503"W	0.96	
6600.00	0.630	140.540	6572.63	-402.82	404.53	-52.01	40°11'18.660"N	104°47'33.501"W	2.02	
6620.00	1.650	152.010	6592.63	-402.49	404.19	-51.80	40°11'18.656"N	104°47'33.498"W	5.20	
6662.00	6.710	166.910	6634.51	-399.59	401.26	-50.96	40°11'18.627"N	104°47'33.488"W	12.22	
6705.00	11.020	170.960	6676.98	-393.12	394.75	-49.75	40°11'18.563"N	104°47'33.472"W	10.12	
6748.00	14.950	168.570	6718.87	-383.68	385.26	-48.00	40°11'18.469"N	104°47'33.449"W	9.22	
6790.00	19.250	170.420	6759.01	-371.61	373.11	-45.77	40°11'18.349"N	104°47'33.421"W	10.32	
6833.00	24.080	173.120	6798.96	-355.97	357.40	-43.54	40°11'18.194"N	104°47'33.392"W	11.47	
6876.00	27.880	177.410	6837.61	-337.26	338.64	-42.04	40°11'18.008"N	104°47'33.373"W	9.85	
6918.00	30.730	183.320	6874.24	-316.73	318.11	-42.21	40°11'17.806"N	104°47'33.375"W	9.66	
6961.00	34.370	185.310	6910.48	-293.63	295.05	-43.97	40°11'17.578"N	104°47'33.398"W	8.82	
7004.00	37.910	184.070	6945.20	-268.31	269.78	-46.04	40°11'17.328"N	104°47'33.424"W	8.41	
7046.00	43.650	181.630	6976.99	-240.90	242.39	-47.37	40°11'17.057"N	104°47'33.441"W	14.18	



Actual Wellpath Report

SARCHET 16N-32HZ AWP

Page 4 of 7



REFERENCE WELLPATH IDENTIFICATION

Operator	KERR-MCGEE OIL & GAS ONSHORE LP	Slot	SLOT#06 SARCHET 16N-32HZ (457'FNL & 236'FEL, SEC.32)
Area	COLORADO	Well	SARCHET 16N-32HZ
Field	WELD COUNTY (KERR MCGEE)	Wellbore	SARCHET 16N-32HZ AWB
Facility	SEC.32-T3N-R66W		

WELLPATH DATA (153 stations) † = interpolated/extrapolated station

MD [ft]	Inclination [°]	Azimuth [°]	TVD [ft]	Vert Sect [ft]	North [ft]	East [ft]	Latitude	Longitude	DLS [°/100ft]	Comments
7089.00	48.460	180.050	7006.83	-209.95	211.45	-47.80	40°11'16.752"N	104°47'33.447"W	11.49	
7132.00	53.880	179.870	7033.78	-176.48	177.96	-47.78	40°11'16.421"N	104°47'33.447"W	12.61	
7174.00	57.450	180.480	7057.46	-141.82	143.29	-47.89	40°11'16.078"N	104°47'33.448"W	8.58	
7217.00	61.450	181.080	7079.32	-104.80	106.27	-48.39	40°11'15.712"N	104°47'33.455"W	9.38	
7260.00	63.700	181.640	7099.12	-66.64	68.11	-49.30	40°11'15.335"N	104°47'33.466"W	5.36	
7303.00	64.540	181.330	7117.89	-27.95	29.44	-50.30	40°11'14.953"N	104°47'33.479"W	2.06	
7345.00	66.310	182.740	7135.36	10.24	-8.73	-51.66	40°11'14.576"N	104°47'33.497"W	5.20	
7388.00	68.140	181.700	7152.00	49.89	-48.34	-53.20	40°11'14.184"N	104°47'33.516"W	4.80	
7431.00	72.080	181.140	7166.63	90.31	-88.76	-54.20	40°11'13.785"N	104°47'33.529"W	9.24	
7473.00	77.160	179.790	7177.76	130.78	-129.24	-54.52	40°11'13.385"N	104°47'33.533"W	12.49	
7516.00	82.640	178.700	7185.30	173.06	-171.55	-53.96	40°11'12.967"N	104°47'33.526"W	12.99	
7559.00	86.360	177.710	7189.42	215.78	-214.32	-52.62	40°11'12.544"N	104°47'33.509"W	8.95	
7582.00	86.890	177.610	7190.78	238.68	-237.27	-51.68	40°11'12.317"N	104°47'33.497"W	2.34	
7611.00†	87.968	177.605	7192.08	267.58	-266.21	-50.47	40°11'12.031"N	104°47'33.481"W	3.72	7" Casing Point
7688.00	90.830	177.590	7192.89	344.37	-343.13	-47.24	40°11'11.271"N	104°47'33.440"W	3.72	
7731.00	90.770	177.310	7192.29	387.25	-386.08	-45.33	40°11'10.847"N	104°47'33.415"W	0.67	
7817.00	90.520	178.770	7191.32	473.07	-472.03	-42.39	40°11'09.997"N	104°47'33.377"W	1.72	
7902.00	88.830	181.700	7191.80	558.03	-557.01	-42.74	40°11'09.158"N	104°47'33.382"W	3.98	
7987.00	88.480	182.790	7193.80	643.00	-641.92	-46.06	40°11'08.319"N	104°47'33.425"W	1.35	
8072.00	88.580	181.750	7195.98	727.96	-726.83	-49.43	40°11'07.480"N	104°47'33.468"W	1.23	
8157.00	89.380	182.040	7197.49	812.95	-811.76	-52.24	40°11'06.640"N	104°47'33.504"W	1.00	
8243.00	90.000	180.690	7197.95	898.94	-897.74	-54.29	40°11'05.791"N	104°47'33.530"W	1.73	
8328.00	89.070	181.490	7198.64	983.94	-982.72	-55.91	40°11'04.951"N	104°47'33.551"W	1.44	
8414.00	89.960	183.350	7199.37	1069.92	-1068.63	-59.54	40°11'04.102"N	104°47'33.598"W	2.40	
8499.00	89.410	179.410	7199.84	1154.90	-1153.59	-61.58	40°11'03.262"N	104°47'33.624"W	4.68	
8584.00	90.950	183.390	7199.57	1239.88	-1238.54	-63.66	40°11'02.423"N	104°47'33.651"W	5.02	
8670.00	90.730	183.510	7198.31	1325.83	-1324.38	-68.83	40°11'01.574"N	104°47'33.718"W	0.29	
8755.00	91.040	183.380	7197.00	1410.78	-1409.21	-73.94	40°11'00.736"N	104°47'33.784"W	0.40	
8840.00	91.200	183.970	7195.34	1495.71	-1494.02	-79.39	40°10'59.898"N	104°47'33.854"W	0.72	
8925.00	91.910	182.290	7193.03	1580.65	-1578.86	-84.03	40°10'59.060"N	104°47'33.914"W	2.15	
9011.00	90.430	181.310	7191.27	1666.63	-1664.80	-86.73	40°10'58.210"N	104°47'33.948"W	2.06	
9096.00	90.190	181.590	7190.81	1751.63	-1749.77	-88.88	40°10'57.371"N	104°47'33.976"W	0.43	
9181.00	89.540	180.550	7191.01	1836.62	-1834.75	-90.47	40°10'56.531"N	104°47'33.997"W	1.44	
9267.00	89.140	181.470	7192.01	1922.61	-1920.73	-91.98	40°10'55.681"N	104°47'34.016"W	1.17	
9352.00	89.660	181.170	7192.90	2007.60	-2005.70	-93.94	40°10'54.842"N	104°47'34.041"W	0.71	
9437.00	88.810	180.790	7194.03	2092.58	-2090.68	-95.39	40°10'54.002"N	104°47'34.060"W	1.10	
9522.00	89.790	182.530	7195.07	2177.57	-2175.64	-97.86	40°10'53.162"N	104°47'34.092"W	2.35	
9607.00	90.120	178.090	7195.14	2262.53	-2260.62	-98.32	40°10'52.323"N	104°47'34.098"W	5.24	
9693.00	89.350	178.530	7195.53	2348.38	-2346.58	-95.78	40°10'51.473"N	104°47'34.065"W	1.03	
9778.00	90.060	179.950	7195.97	2433.30	-2431.56	-94.65	40°10'50.633"N	104°47'34.050"W	1.87	
9864.00	89.600	178.800	7196.23	2519.22	-2517.56	-93.71	40°10'49.783"N	104°47'34.038"W	1.44	
9949.00	90.280	179.780	7196.32	2604.15	-2602.55	-92.66	40°10'48.944"N	104°47'34.025"W	1.40	
10034.00	91.910	179.780	7194.69	2689.08	-2687.53	-92.33	40°10'48.104"N	104°47'34.021"W	1.92	
10119.00	92.000	179.750	7191.79	2773.99	-2772.48	-91.99	40°10'47.264"N	104°47'34.016"W	0.11	
10204.00	90.860	180.210	7189.67	2858.92	-2857.45	-91.96	40°10'46.425"N	104°47'34.016"W	1.45	



Actual Wellpath Report

SARCHET 16N-32HZ AWP
Page 5 of 7



REFERENCE WELLPATH IDENTIFICATION

Operator	KERR-MCGEE OIL & GAS ONSHORE LP	Slot	SLOT#06 SARCHET 16N-32HZ (457'FNL & 236'FEL, SEC.32)
Area	COLORADO	Well	SARCHET 16N-32HZ
Field	WELD COUNTY (KERR MCGEE)	Wellbore	SARCHET 16N-32HZ AWB
Facility	SEC.32-T3N-R66W		

WELLPATH DATA (153 stations)

MD [ft]	Inclination [°]	Azimuth [°]	TVD [ft]	Vert Sect [ft]	North [ft]	East [ft]	Latitude	Longitude	DLS [°/100ft]	Comments
10290.00	89.750	180.320	7189.21	2944.89	-2943.45	-92.35	40°10'45.575"N	104°47'34.021"W	1.30	
10375.00	89.960	180.320	7189.43	3029.87	-3028.45	-92.83	40°10'44.735"N	104°47'34.027"W	0.25	
10461.00	89.230	180.450	7190.04	3115.84	-3114.44	-93.41	40°10'43.885"N	104°47'34.034"W	0.86	
10546.00	89.260	179.800	7191.16	3200.80	-3199.43	-93.59	40°10'43.045"N	104°47'34.037"W	0.77	
10631.00	88.610	180.250	7192.74	3285.75	-3284.42	-93.63	40°10'42.205"N	104°47'34.037"W	0.93	
10717.00	88.080	179.720	7195.22	3371.68	-3370.38	-93.61	40°10'41.356"N	104°47'34.037"W	0.87	
10802.00	88.540	180.470	7197.73	3456.61	-3455.34	-93.75	40°10'40.516"N	104°47'34.039"W	1.03	
10887.00	89.960	181.290	7198.84	3541.59	-3540.32	-95.05	40°10'39.676"N	104°47'34.056"W	1.93	
10972.00	89.220	180.810	7199.45	3626.58	-3625.31	-96.61	40°10'38.837"N	104°47'34.076"W	1.04	
11058.00	90.150	183.360	7199.92	3712.57	-3711.24	-99.74	40°10'37.987"N	104°47'34.116"W	3.16	
11143.00	89.900	183.870	7199.88	3797.52	-3796.07	-105.10	40°10'37.149"N	104°47'34.185"W	0.67	
11229.00	89.130	182.530	7200.61	3883.48	-3881.93	-109.90	40°10'36.301"N	104°47'34.247"W	1.80	
11314.00	89.960	183.060	7201.29	3968.46	-3966.83	-114.04	40°10'35.462"N	104°47'34.300"W	1.16	
11399.00	89.350	183.040	7201.80	4053.44	-4051.70	-118.57	40°10'34.623"N	104°47'34.358"W	0.72	
11485.00	89.500	182.050	7202.66	4139.42	-4137.61	-122.39	40°10'33.774"N	104°47'34.408"W	1.16	
11570.00	90.250	181.160	7202.85	4224.42	-4222.58	-124.77	40°10'32.934"N	104°47'34.438"W	1.37	
11622.00	90.580	181.420	7202.47	4276.42	-4274.56	-125.94	40°10'32.421"N	104°47'34.453"W	0.81	Last BHI MWD Survey
11682.00	90.580	181.420	7201.86	4336.42	-4334.54	-127.42	40°10'31.828"N	104°47'34.473"W	0.00	Projection to Bit

HOLE & CASING SECTIONS - Ref Wellbore: SARCHET 16N-32HZ AWB Ref Wellpath: SARCHET 16N-32HZ AWP

String/Diameter	Start MD [ft]	End MD [ft]	Interval [ft]	Start TVD [ft]	End TVD [ft]	Start N/S [ft]	Start E/W [ft]	End N/S [ft]	End E/W [ft]
13.5in Open Hole	17.00	804.00	787.00	17.00	803.99	0.00	0.00	-0.79	3.04
9.625in Casing Surface	17.00	804.00	787.00	17.00	803.99	0.00	0.00	-0.79	3.04
8.75in Open Hole	804.00	7625.00	6821.00	803.99	7192.51	-0.79	3.04	-280.19	-49.88
7in Casing Intermediate	17.00	7611.00	7594.00	17.00	7192.08	0.00	0.00	-266.21	-50.47
6.125in Open Hole	7611.00	11682.00	4071.00	7192.08	7201.86	-266.21	-50.47	-4334.54	-127.42



Actual Wellpath Report

SARCHET 16N-32HZ AWP

Page 6 of 7



REFERENCE WELLPATH IDENTIFICATION

Operator	KERR-MCGEE OIL & GAS ONSHORE LP	Slot	SLOT#06 SARCHET 16N-32HZ (457'FNL & 236'FEL, SEC.32)
Area	COLORADO	Well	SARCHET 16N-32HZ
Field	WELD COUNTY (KERR MCGEE)	Wellbore	SARCHET 16N-32HZ AWB
Facility	SEC.32-T3N-R66W		

TARGETS

Name	MD [ft]	TVD [ft]	North [ft]	East [ft]	Grid East [US ft]	Grid North [US ft]	Latitude	Longitude	Shape
SARCHET 1-32HZ PAD SECTION LINES		0.00	0.00	0.00	3197675.00	1311903.36	40°11'14.662"N	104°47'32.831"W	polygon
SARCHET 16N-32HZ BHL ON PLAT (460'FSL & 400'FEL, SEC.32) REV-1		7188.00	-4360.35	-170.15	3197539.65	1307541.99	40°10'31.573"N	104°47'35.023"W	point
SARCHET 16N-32HZ BHL (460'FSL & 350'FEL, SEC.32) REV-2		7189.00	-4360.35	-120.15	3197589.65	1307542.39	40°10'31.573"N	104°47'34.379"W	point
SARCHET 1-32HZ PAD HARDLINES (460' SETBACKS)		7450.00	0.00	0.00	3197675.00	1311903.36	40°11'14.662"N	104°47'32.831"W	polygon

WELLPATH COMPOSITION - Ref Wellbore: SARCHET 16N-32HZ AWB Ref Wellpath: SARCHET 16N-32HZ AWP

Start MD [ft]	End MD [ft]	Positional Uncertainty Model	Log Name/Comment	Wellbore
17.00	763.00	Generic gyro - continuous (Standard)	GYRODATA SURVEYS <117-763>	SARCHET 16N-32HZ AWB
763.00	7582.00	NaviTrak (Standard)	BHI MWD SURVEYS 8 3/4" HOLE <865-7582>	SARCHET 16N-32HZ AWB
7582.00	11622.00	OnTrak (Standard)	BHI MWD SURVEYS 6 1/8" HOLE <7688-11622>	SARCHET 16N-32HZ AWB
11622.00	11682.00	Blind Drilling (std)	Projection to bit	SARCHET 16N-32HZ AWB



Actual Wellpath Report

SARCHET 16N-32HZ AWP

Page 7 of 7



REFERENCE WELLPATH IDENTIFICATION

Operator	KERR-MCGEE OIL & GAS ONSHORE LP	Slot	SLOT#06 SARCHET 16N-32HZ (457'FNL & 236'FEL, SEC.32)
Area	COLORADO	Well	SARCHET 16N-32HZ
Field	WELD COUNTY (KERR MCGEE)	Wellbore	SARCHET 16N-32HZ AWB
Facility	SEC.32-T3N-R66W		

WELLPATH COMMENTS

MD [ft]	Inclination [°]	Azimuth [°]	TVD [ft]	Comment
17.00	0.000	94.970	17.00	Tie-On
117.00	0.790	94.970	117.00	Begin GYRO Surveys
763.00	0.180	330.160	762.99	Tie-Into GYRO Surveys
865.00	0.090	254.000	864.99	Begin BHI MWD Surveys
7611.00	87.968	177.605	7192.08	7" Casing Point
11622.00	90.580	181.420	7202.47	Last BHI MWD Survey
11682.00	90.580	181.420	7201.86	Projection to Bit