

S 1/4 Cor. Sec. 32  
1970 Brass Cap, 0.2' High  
E-W Fenceline  
Lat: 39.651225"  
Long: 108.192233"

T5S, R96W, 6th P.M.

SE Cor. Sec. 33  
1953 Brass Cap  
0.2' High, Pile  
of Stones, Fence  
Lat: 39.651322"  
Long: 108.164147"

Encana OIL & GAS (USA) INC.

Well location, N. PARACHUTE UWF13C-03 H04 596  
(SURFACE LOCATION), located as shown in the SE  
1/4 NE 1/4 of Section 4, T5S, R96W, 6th P.M.,  
Garfield County, Colorado.

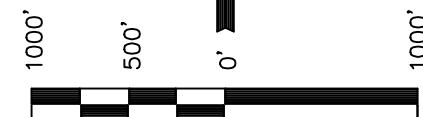
### BASIS OF ELEVATION

BENCH MARK (H79) LOCATED IN THE NE 1/4 OF SECTION  
35, T4S, R98W, 6th P.M. TAKEN FROM THE BULL FORK  
QUADRANGLE, COLORADO, 7.5 MINUTE SERIES (TOPO  
GRAPHICAL MAP) PUBLISHED BY THE UNITED STATES  
DEPARTMENT OF THE INTERIOR, GEOLOGICAL SURVEY.  
SAID ELEVATION IS MARKED AS BEING 8535 FEET.

### BASIS OF BEARINGS

BASIS OF BEARINGS IS A G.P.S. OBSERVATION.

Sheet 1iii of 9



SCALE

### CERTIFICATE

THIS IS TO CERTIFY THAT THE ABOVE PLAT WAS PREPARED AND  
LOCATION AS SHOWN WAS STAKED ON THE GROUND FROM FIELD  
NOTES OF ACTUAL SURVEYS MADE BY ME OR UNDER MY  
SUPERVISION AND THAT THE SAME ARE TRUE AND CORRECT TO  
THE BEST OF MY KNOWLEDGE AND BELIEF.

REGISTERED LAND SURVEYOR  
REGISTRATION NO. 17492  
STATE OF COLORADO

REVISED: 10-18-12

UINTAH ENGINEERING & LAND SURVEYING  
85 SOUTH 200 EAST - VERNAL, UTAH 84078  
(435) 789-1017

### LEGEND:

- └─ = 90° SYMBOL  
● = PROPOSED WELL HEAD.  
▲ = SECTION CORNERS LOCATED.  
△ = SECTION CORNERS  
RE-ESTABLISHED.  
(Not Set on Ground.)

### LINE TABLE

LINE	DIRECTION	LENGTH
L1	N89°35'21"E	195.03'
L2	S89°37'21"W	200.90'

PDOP = 1.4

NAD 83 (SURFACE LOCATION)	
LATITUDE =	39°38'44.63" (39.645731)
LONGITUDE =	108°09'54.27" (108.165075)
NAD 27 (SURFACE LOCATION)	
LATITUDE =	39°38'44.72" (39.645756)
LONGITUDE =	108°09'51.98" (108.164439)

SCALE 1" = 1000'	DATE SURVEYED: 04-11-12	DATE DRAWN: 04-17-12
PARTY B.B. C.C. T.B.	REFERENCES G.L.O. PLAT	
WEATHER COLD	FILE Encana OIL & GAS (USA) INC.	

S 1/4 Cor. Sec. 33  
1970 Brass Cap  
0.3' High, Fence Cor.  
Lat: 39.651286°  
Long: 108.173514°

SW Cor. Sec. 34  
1953 Brass Cap  
0.2' High, Pile  
of Stones, Fence  
Lat: 39.651322°  
Long: 108.164147°

T5S, R96W, 6th P.M.

SE Cor. Sec. 34  
1953 Brass Cap  
0.2' High, E-W  
Fenceline, Mound  
of Stones, Steel Post  
Lat: 39.651386°  
Long: 108.145378°

Encana OIL & GAS (USA) INC.

Well location, N. PARACHUTE UWF13C-03 H04 596  
(TARGET BOTTOM HOLE), located as shown in the  
SE 1/4 NW 1/4 of Section 3, T5S, R96W, 6th  
P.M., Garfield County, Colorado.

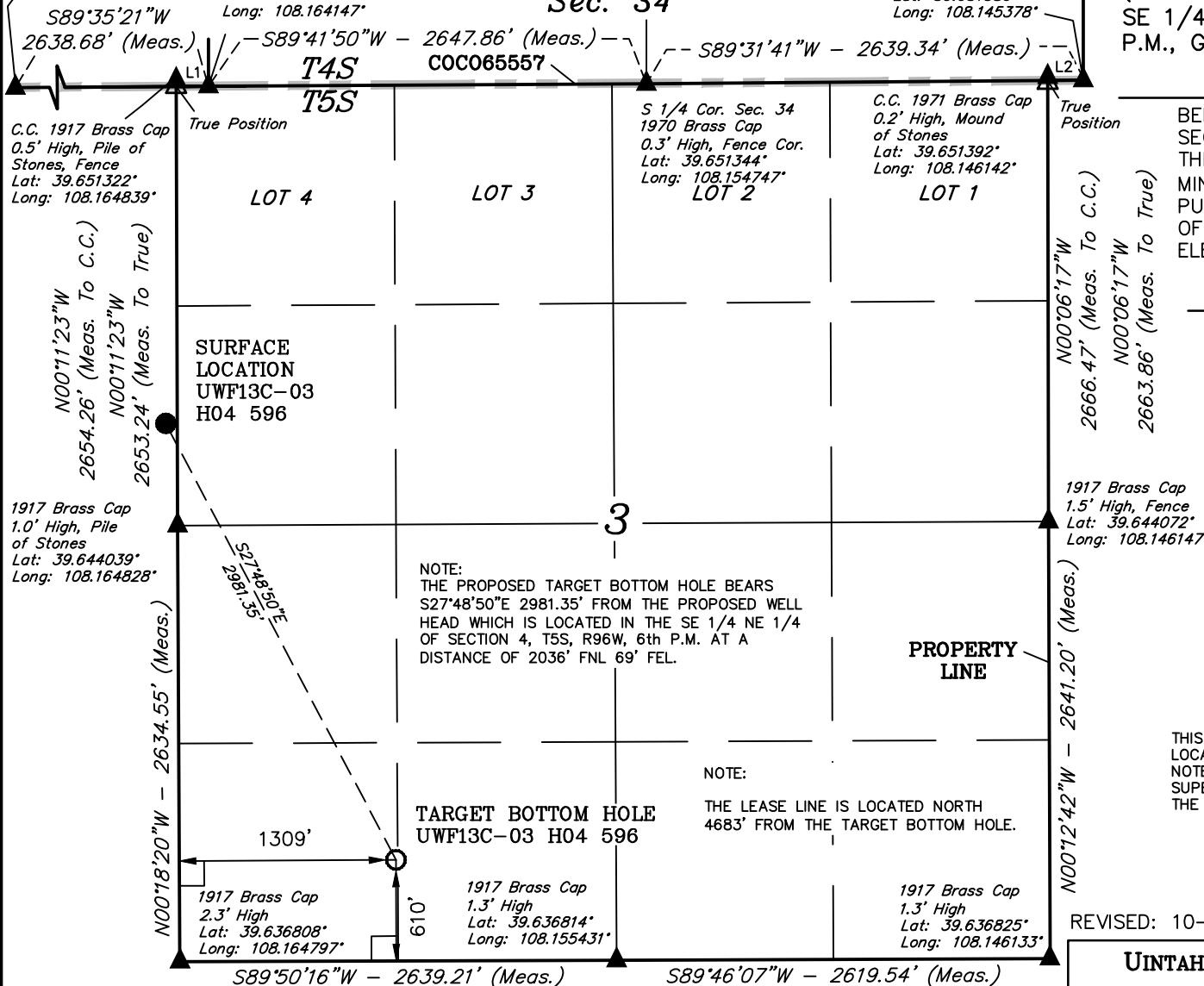
### BASIS OF ELEVATION

BENCH MARK (H79) LOCATED IN THE NE 1/4 OF  
SECTION 35, T4S, R98W, 6th P.M. TAKEN FROM  
THE BULL FORK QUADRANGLE, COLORADO, 7.5  
MINUTE SERIES (TOPO GRAPHICAL MAP)  
PUBLISHED BY THE UNITED STATES DEPARTMENT  
OF THE INTERIOR, GEOLOGICAL SURVEY. SAID  
ELEVATION IS MARKED AS BEING 8535 FEET.

### BASIS OF BEARINGS

BASIS OF BEARINGS IS A G.P.S. OBSERVATION.

Sheet 1jjj of 9



### CERTIFICATE

THIS IS TO CERTIFY THAT THE ABOVE PLAT WAS PREPARED AND  
LOCATION AS SHOWN WAS STAKED ON THE GROUND FROM FIELD  
NOTES OF ACTUAL SURVEYS MADE BY ME OR UNDER MY  
SUPERVISION AND THAT THE SAME ARE TRUE AND CORRECT TO  
THE BEST OF MY KNOWLEDGE AND BELIEF.

REGISTERED LAND SURVEYOR  
REGISTRATION NO. 17492  
STATE OF COLORADO  
OF 08-18-12

REVISED: 10-18-12

### LEGEND:

- └─ = 90° SYMBOL
- = PROPOSED WELL HEAD.
- ▲ = SECTION CORNERS LOCATED.
- △ = SECTION CORNERS  
RE-ESTABLISHED.  
(Not Set on Ground.)

### LINE TABLE

LINE	DIRECTION	LENGTH
L1	N89°35'21"E	195.03'
L2	S89°31'41"W	215.17'

NAD 83 (TARGET BOTTOM HOLE)  
LATITUDE = 39°38'18.55" (39.638486)  
LONGITUDE = 108°09'36.57" (108.160158)  
NAD 27 (TARGET BOTTOM HOLE)  
LATITUDE = 39°38'18.64" (39.638511)  
LONGITUDE = 108°09'34.28" (108.159522)

UINTAH ENGINEERING & LAND SURVEYING  
85 SOUTH 200 EAST - VERNAL, UTAH 84078  
(435) 789-1017

SCALE 1" = 1000'	DATE SURVEYED: 04-11-12	DATE DRAWN: 04-17-12
PARTY B.B. C.C. T.B.	REFERENCES G.L.O. PLAT	
WEATHER COLD	FILE Encana OIL & GAS (USA) INC.	