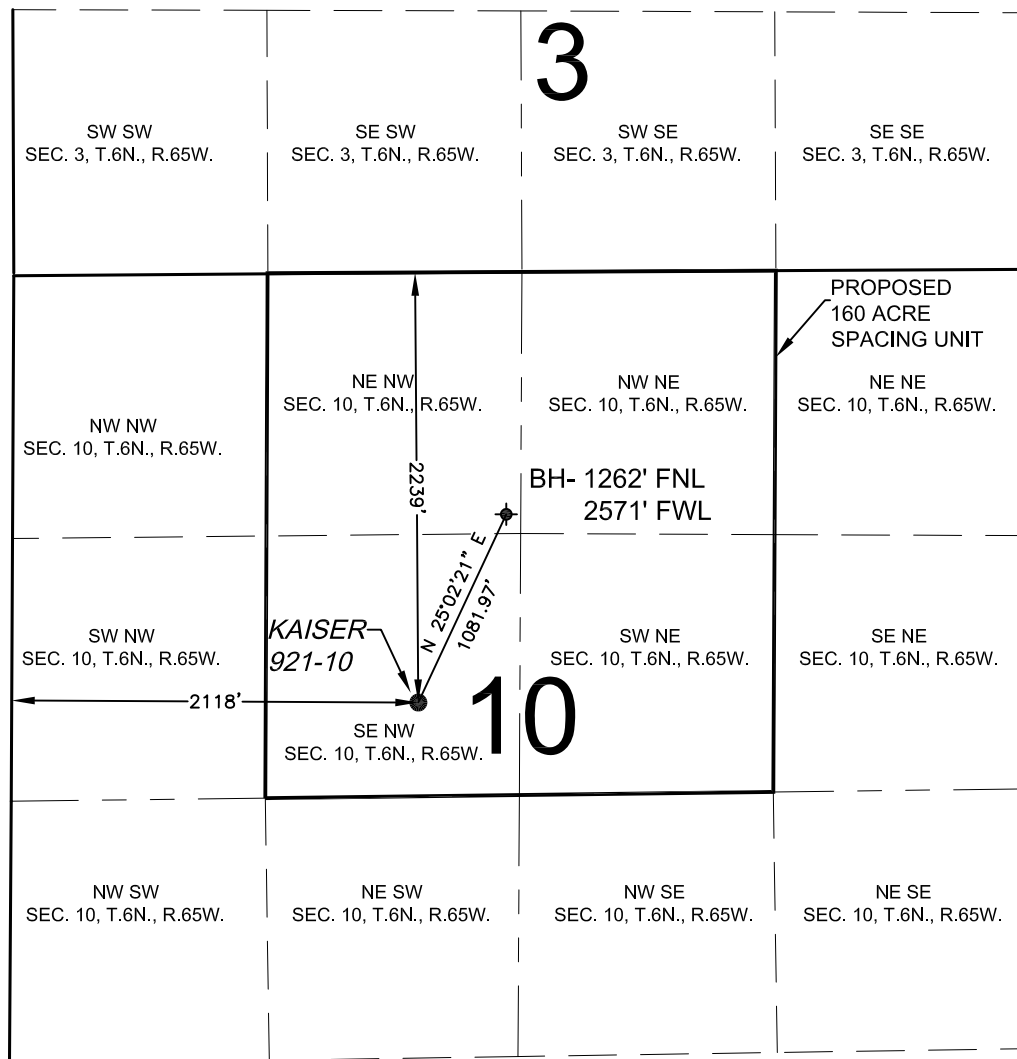


PROPOSED 318 Ae SPACING UNIT

SECTION 10, TOWNSHIP 6 NORTH, RANGE 65 WEST, 6TH P.M.



WELL KAISER 921-10 TO BE LOCATED 2,239' FNL AND 2,118' FWL, T6N, R65W, SEC. 10

SURFACE LOCATION

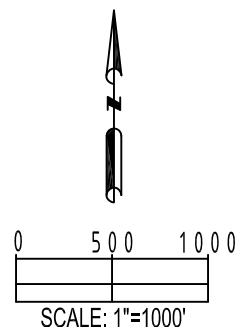
LATITUDE= 40.502382°
LONGITUDE= 104.651353°

BOTTOM HOLE LOCATION

LATITUDE= 40.505061°
LONGITUDE= 104.649673°

LEGEND

- ◆ = BOTTOM HOLE BH = BOTTOM HOLE
 ● = PROPOSED WELL ◆ = EXISTING WELL



PREPARED BY: Petroleum Field Services, LLC 1801 W. 13th Ave. Denver, CO 80204	FIELD DATE: 07-31-12	SURFACE LOCATION: SE 1/4 NW 1/4, SEC. 10, T6N, R65W, 6TH P.M. WELD COUNTY, COLORADO
	DRAWING DATE: 10-30-12	
BY: CLM	CHECK: xxx	