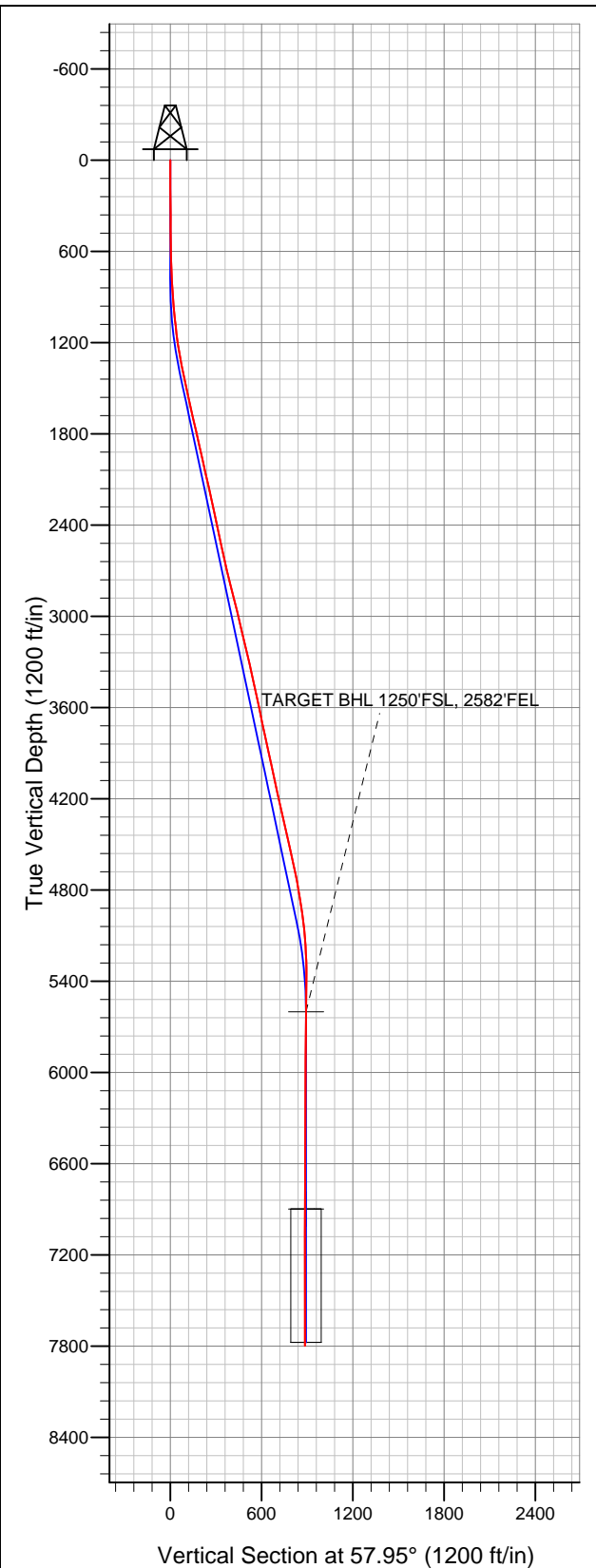


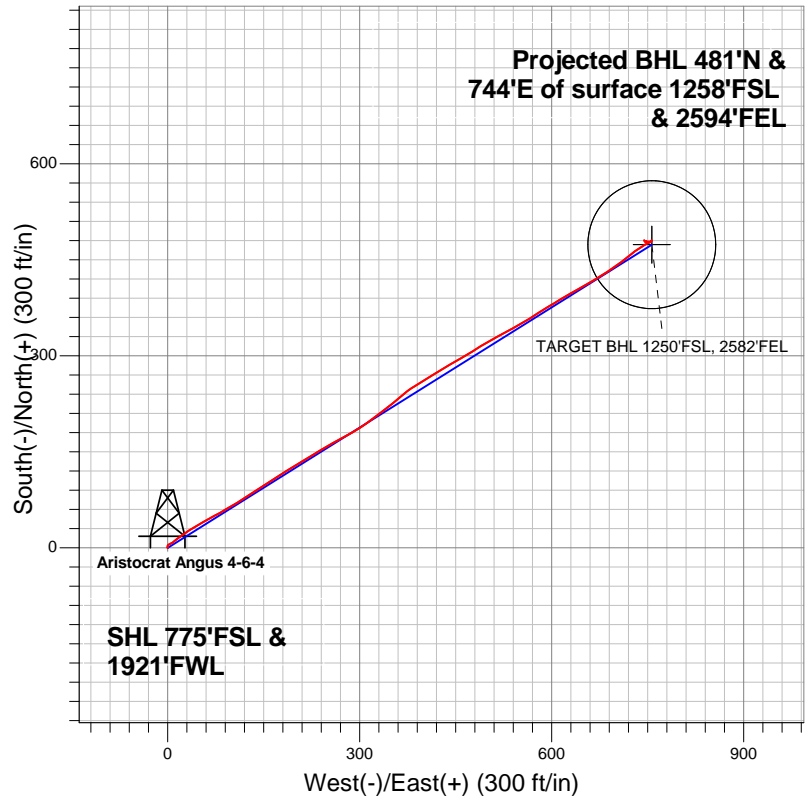
Well Name: Aristocrat Angus 4-6-4

Surface Location: Aristocrat Angus 4-6-4 Pad Sec.4-T3N-R65W
 North American Datum 1983 US State Plane 1983Colorado Northern Zone
 Ground Elevation: 4820.0

+N/-S	+E/-W	Northing	Easting	Latitude	Longitude	Slot
0.0	0.0	1334725.58	3231445.36	40.249250	-104.670820	
Original Well Elev		WELL @ 4832.0ft (Original Well Elev)				



EnCana Oil & Gas Weld County CO



LEGEND

- Wellbore #1
- Aristocrat Angus 4-6-4, Wellbore #1, Plan #1 (7-23-12) R V0
- Survey #1

Final Survey Plot

Projected Final Survey -
 7890'MD & 7797'TVD @ 886'VS
 0.50 deg Inc 329.50 deg AZ

Project: SEC.4-T3N-R65W
 Site: Aristocrat Angus 4-6-4 Pad Sec.4-T3N-R65W
 Well: Aristocrat Angus 4-6-4
 Plan: Wellbore #1



EnCana Oil & Gas Weld County CO

SEC.4-T3N-R65W

Aristocrat Angus 4-6-4 Pad Sec.4-T3N-R65W

Aristocrat Angus 4-6-4

Wellbore #1

Survey: Survey #1

Standard Survey Report

06 August, 2012

Company:	EnCana Oil & Gas Weld County CO	Local Co-ordinate Reference:	Well Aristocrat Angus 4-6-4
Project:	SEC.4-T3N-R65W	TVD Reference:	WELL @ 4832.0ft (Original Well Elev)
Site:	Aristocrat Angus 4-6-4 Pad Sec.4-T3N-R65W	MD Reference:	WELL @ 4832.0ft (Original Well Elev)
Well:	Aristocrat Angus 4-6-4	North Reference:	True
Wellbore:	Wellbore #1	Survey Calculation Method:	Minimum Curvature
Design:	Wellbore #1	Database:	Landmark

Project	SEC.4-T3N-R65W, Weld County, Colorado		
Map System:	US State Plane 1983	System Datum:	Mean Sea Level
Geo Datum:	North American Datum 1983		Using Well Reference Point
Map Zone:	Colorado Northern Zone		Using geodetic scale factor

Site	Aristocrat Angus 4-6-4 Pad Sec.4-T3N-R65W				
Site Position:		Northing:	1,334,725.59ft	Latitude:	40.249250
From:	Lat/Long	Easting:	3,231,445.36ft	Longitude:	-104.670820
Position Uncertainty:	0.0 ft	Slot Radius:	"	Grid Convergence:	0.54 °

Well	Aristocrat Angus 4-6-4					
Well Position	+N/-S	0.0 ft	Northing:	1,334,725.58 ft	Latitude:	40.249250
	+E/-W	0.0 ft	Easting:	3,231,445.36 ft	Longitude:	-104.670820
Position Uncertainty		0.0 ft	Wellhead Elevation:	ft	Ground Level:	4,820.0 ft

Wellbore	Wellbore #1				
Magnetics	Model Name	Sample Date	Declination (°)	Dip Angle (°)	Field Strength (nT)
	IGRF2010	7/23/2012	8.65	66.91	52,946

Design	Wellbore #1				
Audit Notes:					
Version:	1.0	Phase:	ACTUAL	Tie On Depth:	0.0
Vertical Section:	Depth From (TVD) (ft)	+N/-S (ft)	+E/-W (ft)	Direction (°)	
	0.0	0.0	0.0	57.95	

Survey Program	Date	8/3/2012			
From (ft)	To (ft)	Survey (Wellbore)	Tool Name	Description	
94.0	7,890.0	Survey #1 (Wellbore #1)	MWD	MWD - Standard	

Survey										
Measured Depth (ft)	Inclination (°)	Azimuth (°)	Vertical Depth (ft)	+N/-S (ft)	+E/-W (ft)	Vertical Section (ft)	Dogleg Rate (°/100ft)	Build Rate (°/100ft)	Turn Rate (°/100ft)	
0.0	0.00	0.00	0.0	0.0	0.0	0.0	0.00	0.00	0.00	
94.0	0.80	340.00	94.0	0.6	-0.2	0.1	0.85	0.85	0.00	
185.0	0.90	8.30	185.0	1.9	-0.3	0.7	0.47	0.11	31.10	
276.0	1.00	34.10	276.0	3.3	0.2	1.9	0.48	0.11	28.35	
368.0	0.20	19.60	368.0	4.1	0.7	2.8	0.88	-0.87	-15.76	
459.0	0.20	285.50	459.0	4.3	0.6	2.8	0.32	0.00	-103.41	
550.0	0.70	65.10	550.0	4.6	1.0	3.2	0.95	0.55	153.41	
642.0	2.10	64.20	641.9	5.5	3.0	5.5	1.52	1.52	-0.98	
767.0	2.00	58.60	766.9	7.7	6.9	9.9	0.18	-0.08	-4.48	
861.0	3.50	48.20	860.7	10.4	10.5	14.4	1.68	1.60	-11.06	
955.0	5.40	53.10	954.5	15.0	16.1	21.6	2.06	2.02	5.21	
1,048.0	5.80	55.80	1,047.0	20.3	23.5	30.7	0.51	0.43	2.90	
1,142.0	7.30	55.10	1,140.4	26.4	32.3	41.4	1.60	1.60	-0.74	

Company:	EnCana Oil & Gas Weld County CO	Local Co-ordinate Reference:	Well Aristocrat Angus 4-6-4
Project:	SEC.4-T3N-R65W	TVD Reference:	WELL @ 4832.0ft (Original Well Elev)
Site:	Aristocrat Angus 4-6-4 Pad Sec.4-T3N-R65W	MD Reference:	WELL @ 4832.0ft (Original Well Elev)
Well:	Aristocrat Angus 4-6-4	North Reference:	True
Wellbore:	Wellbore #1	Survey Calculation Method:	Minimum Curvature
Design:	Wellbore #1	Database:	Landmark

Survey										
Measured Depth (ft)	Inclination (°)	Azimuth (°)	Vertical Depth (ft)	+N-S (ft)	+E-W (ft)	Vertical Section (ft)	Dogleg Rate (°/100ft)	Build Rate (°/100ft)	Turn Rate (°/100ft)	
1,236.0	8.70	61.40	1,233.5	33.2	43.5	54.5	1.76	1.49	6.70	
1,329.0	10.80	58.40	1,325.1	41.1	57.1	70.2	2.32	2.26	-3.23	
1,423.0	11.60	62.60	1,417.3	50.1	73.0	88.4	1.21	0.85	4.47	
1,517.0	13.10	59.60	1,509.2	59.8	90.6	108.5	1.74	1.60	-3.19	
1,610.0	12.40	59.30	1,599.9	70.3	108.2	129.0	0.76	-0.75	-0.32	
1,704.0	12.70	56.60	1,691.6	81.1	125.5	149.4	0.70	0.32	-2.87	
1,798.0	12.80	56.30	1,783.3	92.6	142.8	170.2	0.13	0.11	-0.32	
1,891.0	12.50	56.80	1,874.1	103.8	159.8	190.5	0.34	-0.32	0.54	
1,985.0	12.90	59.50	1,965.8	114.7	177.4	211.2	0.76	0.43	2.87	
2,079.0	12.50	56.80	2,057.5	125.6	194.9	231.9	0.76	-0.43	-2.87	
2,172.0	12.50	60.20	2,148.3	136.1	212.1	252.0	0.79	0.00	3.66	
2,266.0	13.10	57.20	2,239.9	146.9	229.9	272.8	0.95	0.64	-3.19	
2,360.0	12.10	60.70	2,331.7	157.5	247.4	293.3	1.34	-1.06	3.72	
2,453.0	12.00	61.00	2,422.6	167.0	264.4	312.7	0.13	-0.11	0.32	
2,547.0	12.10	61.20	2,514.5	176.5	281.5	332.3	0.12	0.11	0.21	
2,641.0	11.90	58.00	2,606.5	186.3	298.4	351.8	0.74	-0.21	-3.40	
2,734.0	14.00	53.30	2,697.1	198.1	315.6	372.6	2.52	2.26	-5.05	
2,828.0	14.00	53.00	2,788.3	211.8	333.7	395.3	0.08	0.00	-0.32	
2,922.0	14.10	50.00	2,879.5	226.0	351.6	417.9	0.78	0.11	-3.19	
3,015.0	14.00	51.00	2,969.7	240.3	369.0	440.3	0.28	-0.11	1.08	
3,109.0	12.50	57.50	3,061.2	253.0	386.4	461.8	2.25	-1.60	6.91	
3,203.0	14.10	59.50	3,152.7	264.2	404.9	483.4	1.77	1.70	2.13	
3,296.0	13.10	57.90	3,243.1	275.6	423.6	505.3	1.15	-1.08	-1.72	
3,390.0	12.00	59.80	3,334.8	286.2	441.0	525.7	1.25	-1.17	2.02	
3,484.0	12.80	59.60	3,426.7	296.4	458.5	545.9	0.85	0.85	-0.21	
3,577.0	12.70	59.10	3,517.4	306.8	476.1	566.4	0.16	-0.11	-0.54	
3,671.0	12.00	57.50	3,609.2	317.4	493.2	586.5	0.83	-0.74	-1.70	
3,765.0	11.50	63.30	3,701.2	326.8	509.8	605.6	1.36	-0.53	6.17	
3,858.0	11.90	61.40	3,792.3	335.6	526.6	624.4	0.60	0.43	-2.04	
3,952.0	12.80	59.50	3,884.1	345.5	544.0	644.5	1.05	0.96	-2.02	
4,045.0	12.80	58.40	3,974.8	356.1	561.7	665.1	0.26	0.00	-1.18	
4,139.0	12.10	58.20	4,066.6	366.8	578.9	685.3	0.75	-0.74	-0.21	
4,233.0	11.50	57.90	4,158.6	377.0	595.2	704.6	0.64	-0.64	-0.32	
4,326.0	12.70	59.80	4,249.5	387.0	611.9	724.0	1.36	1.29	2.04	
4,420.0	12.70	60.30	4,341.2	397.3	629.8	744.7	0.12	0.00	0.53	
4,514.0	13.00	60.50	4,432.9	407.7	648.0	765.6	0.32	0.32	0.21	
4,607.0	12.90	59.80	4,523.5	418.0	666.1	786.4	0.20	-0.11	-0.75	
4,701.0	12.80	56.60	4,615.2	429.1	683.8	807.3	0.76	-0.11	-3.40	
4,795.0	10.90	53.70	4,707.2	440.1	699.7	826.6	2.12	-2.02	-3.09	
4,888.0	9.70	52.80	4,798.7	450.0	713.0	843.1	1.30	-1.29	-0.97	
4,982.0	8.70	51.20	4,891.4	459.2	724.9	858.1	1.10	-1.06	-1.70	
5,076.0	7.40	56.30	4,984.5	467.1	735.5	871.2	1.58	-1.38	5.43	
5,169.0	6.10	59.30	5,076.9	472.9	744.7	882.1	1.45	-1.40	3.23	
5,263.0	3.10	70.50	5,170.6	476.3	751.4	889.6	3.32	-3.19	11.91	
5,357.0	2.10	53.80	5,264.5	478.2	755.2	893.8	1.32	-1.06	-17.77	
5,450.0	0.90	347.20	5,357.4	479.9	756.4	895.8	2.07	-1.29	-71.61	
5,544.0	0.60	215.00	5,451.4	480.2	755.9	895.5	1.46	-0.32	-140.64	
5,638.0	0.70	203.10	5,545.4	479.3	755.4	894.6	0.18	0.11	-12.66	
5,692.6	0.74	219.56	5,600.0	478.7	755.1	894.0	0.38	0.07	30.14	
TARGET BHL 1250°FSL, 2582°FEL										
5,731.0	0.80	229.60	5,638.4	478.3	754.7	893.5	0.38	0.16	26.15	
5,825.0	0.70	280.90	5,732.4	478.0	753.6	892.4	0.70	-0.11	54.57	
5,919.0	1.20	268.30	5,826.4	478.1	752.1	891.2	0.57	0.53	-13.40	
6,012.0	1.10	278.10	5,919.4	478.2	750.2	889.6	0.24	-0.11	10.54	

Company:	EnCana Oil & Gas Weld County CO	Local Co-ordinate Reference:	Well Aristocrat Angus 4-6-4
Project:	SEC.4-T3N-R65W	TVD Reference:	WELL @ 4832.0ft (Original Well Elev)
Site:	Aristocrat Angus 4-6-4 Pad Sec.4-T3N-R65W	MD Reference:	WELL @ 4832.0ft (Original Well Elev)
Well:	Aristocrat Angus 4-6-4	North Reference:	True
Wellbore:	Wellbore #1	Survey Calculation Method:	Minimum Curvature
Design:	Wellbore #1	Database:	Landmark

Survey										
Measured Depth (ft)	Inclination (°)	Azimuth (°)	Vertical Depth (ft)	+N/-S (ft)	+E/-W (ft)	Vertical Section (ft)	Dogleg Rate (°/100ft)	Build Rate (°/100ft)	Turn Rate (°/100ft)	
6,106.0	0.50	278.30	6,013.4	478.4	748.9	888.6	0.64	-0.64	0.21	
6,200.0	0.40	264.10	6,107.4	478.4	748.2	888.0	0.16	-0.11	-15.11	
6,293.0	0.40	314.50	6,200.4	478.6	747.7	887.7	0.37	0.00	54.19	
6,387.0	0.10	95.50	6,294.4	478.8	747.5	887.7	0.51	-0.32	150.00	
6,481.0	0.10	221.50	6,388.4	478.7	747.5	887.6	0.19	0.00	134.04	
6,575.0	0.40	257.90	6,482.4	478.6	747.2	887.3	0.35	0.32	38.72	
6,670.0	0.40	286.20	6,577.4	478.6	746.5	886.7	0.21	0.00	29.79	
6,764.0	0.30	291.70	6,671.4	478.8	746.0	886.4	0.11	-0.11	5.85	
6,858.0	0.20	121.10	6,765.4	478.8	745.9	886.3	0.53	-0.11	-181.49	
6,953.0	0.40	183.20	6,860.4	478.4	746.0	886.2	0.37	0.21	65.37	
6,989.6	0.22	189.72	6,897.0	478.2	746.0	886.1	0.51	-0.50	17.80	
TARGET CIRCLE 1250'FSL & 2582'FEL										
7,047.0	0.10	324.40	6,954.4	478.1	745.9	886.0	0.51	-0.20	234.82	
7,141.0	0.30	100.90	7,048.4	478.2	746.1	886.2	0.40	0.21	145.21	
7,235.0	0.10	315.70	7,142.4	478.2	746.3	886.3	0.41	-0.21	-154.47	
7,330.0	0.10	111.10	7,237.4	478.2	746.3	886.3	0.21	0.00	163.58	
7,424.0	0.50	304.90	7,331.4	478.4	746.1	886.2	0.64	0.43	-176.81	
7,518.0	0.20	339.10	7,425.4	478.8	745.7	886.1	0.38	-0.32	36.38	
7,613.0	0.30	319.80	7,520.4	479.1	745.5	886.1	0.14	0.11	-20.32	
7,707.0	0.30	286.30	7,614.4	479.4	745.1	885.9	0.18	0.00	-35.64	
7,801.0	0.60	339.70	7,708.4	479.9	744.7	885.8	0.52	0.32	56.81	
7,845.0	0.50	329.50	7,752.3	480.3	744.5	885.9	0.32	-0.23	-23.18	
7,890.0	0.50	329.50	7,797.3	480.7	744.3	885.9	0.00	0.00	0.00	

Checked By: _____ Approved By: _____ Date: _____