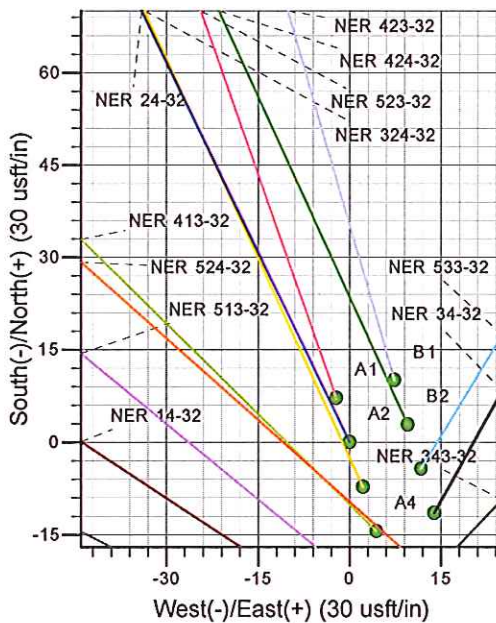
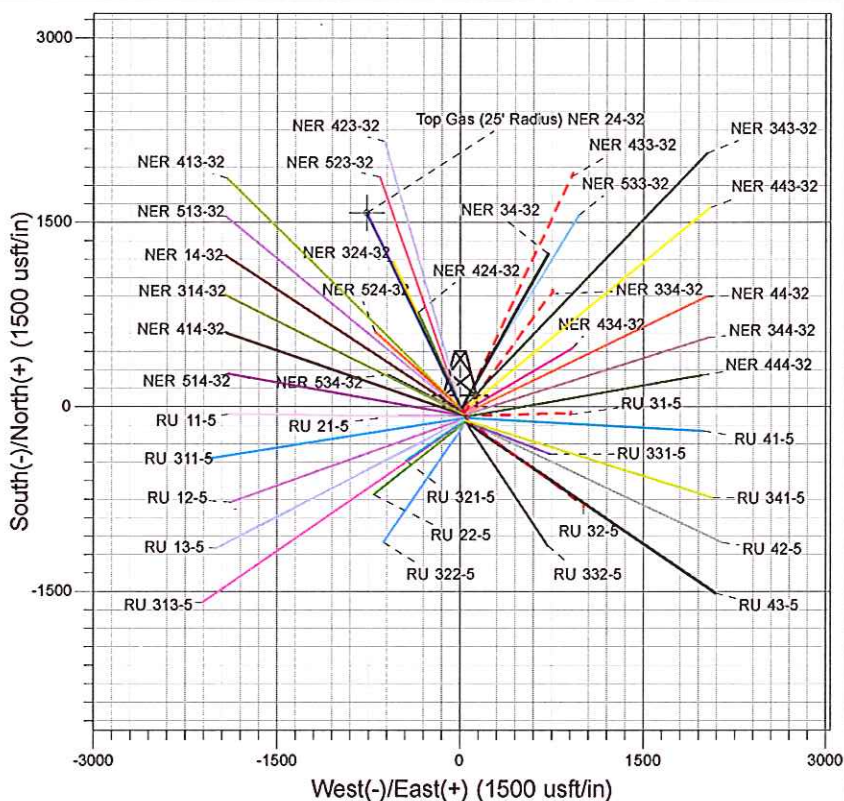
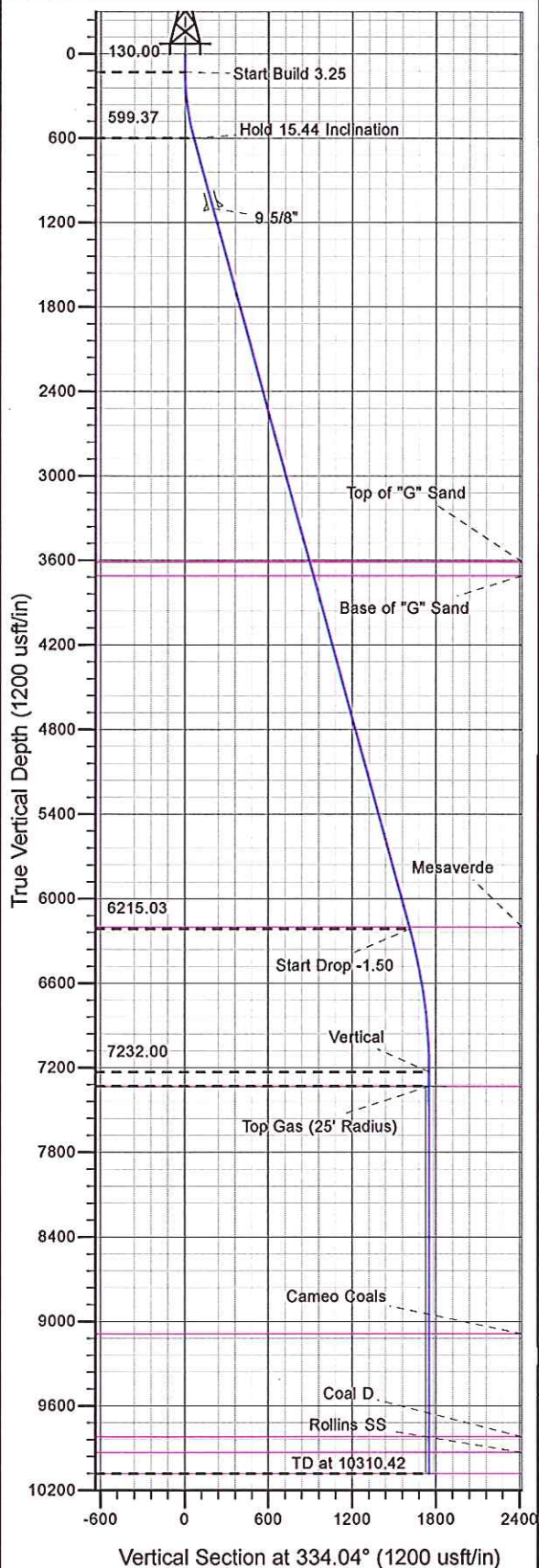




Well Name: NER 24-32
 Surface Location: Single Cellar RU 23-5 Pad
 North American Datum 1983 , US State Plane 1983 , Colorado Central Zone
 Ground Elevation: 7602.00
 +N/-S 0.00 +E/-W 0.00 Northing 1606118.40 Easting 2351122.40 Latitude 39.47503 Longitude -107.79891 Slot A2
 KELLY BUSHING @ 7628.00usft



Project: RU 05-07S-093W
 Site: Single Cellar RU 23-5 Pad
 Well: NER 24-32
 Plan #3 22Jun12 kjs



Azimuths to True North
 Magnetic North: 10.58°
 Magnetic Field
 Strength: 52542.9snT
 Dip Angle: 65.84°
 Date: 10/21/2008
 Model: IGRF2005-10

ANNOTATIONS

MD	Inc	Azi	TVD	+N/-S	+E/-W	Vsect	Departure	Annotation
0.00	130.00	0.00	130.00	0.00	0.00	0.00	0.00	Start Build 3.25
605.10	15.44	334.04	599.37	57.21	-27.85	63.63	63.63	Hold 15.44 Inclination
6431.04	15.44	334.04	6215.03	1451.85	-706.76	1614.74	1614.74	Start Drop -1.50
7460.42	0.00	0.00	7232.00	1575.81	-767.10	1752.60	1752.60	Vertical
7560.42	0.00	0.00	7332.00	1575.81	-767.10	1752.60	1752.60	Top Gas
10310.42	0.00	0.00	10082.00	1575.81	-767.10	1752.60	1752.60	TD at 10310.42