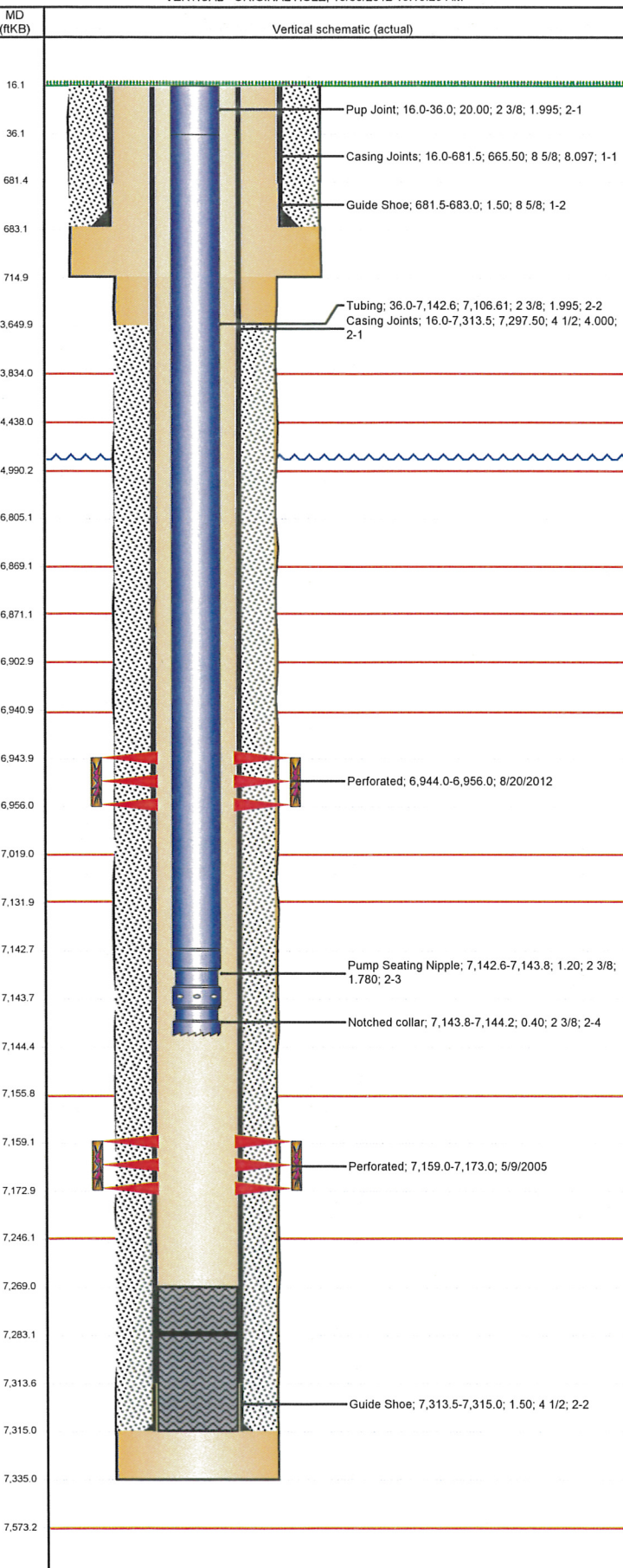


Well Name: MOSER H26-14

VERTICAL - ORIGINAL HOLE, 10/30/2012 10:19:29 AM



## Well Header

API 05-123-22417	Business Unit WATTENBERG	District 15	Well Config VERTICAL
Original KB Elevation (ft) 4,866.00	KB - GL / MSL (ftKB) 16.00	Spud Date 4/20/2005	P & A Date

Comment  
SURFACE LOCATION CHANGED GL, CHANGE NOT NOTED ON LOGS

Directions To Well  
CR 30 AND CR 49, W 1.9 MI, S 3/10 TO RED BARN, SW 1/10, S S/E 5/10 TO GATE, E 3/10 INTO

Current PBTD (ftKB)  
ORIGINAL HOLE - 7,283.0

## Surface Location (Congressional)

Quarter 1	Quarter 2	Quarter 3	Quarter 4	Section	Township	Twnshp N...	Range	Rng E/W Dir
		SE	SW	26	3	N	65	W

## Bottom Hole Location

North-South Distance (ft)	From N or S Line	East-West Distance (ft)	From E or W Line

## Plug Back Total Depths

Date	Depth (ftKB)	Method	Com
4/23/2005	7,284.0	CASING TALLY	FLOAT SHOE
5/7/2005	7,269.0	CASED HOLE LOG	DEPTH LOGGER ON CBL

## Wellbore Sections

Section Des	Size (in)	Act Top (ftKB)	Act Btm (ftKB)
SURFACE	12 1/4	16.0	715.0
PRODUCTION	7 7/8	715.0	7,335.0

## Zone Statuses

Zone Name	Status Date	Status	Job
CODELL	5/28/2005	PR	DRILLING/COMPLETION - ORIGINAL, 4/20/2005 00:00
CODELL	8/23/2012	PR	RE-FRAC & RECOMPLETE, 7/19/2012 06:00
NIOBRARA	8/23/2012	PR	RE-FRAC & RECOMPLETE, 7/19/2012 06:00

## Casing Strings

Csg Des	Run Date	OD (in)	Wt/Len (lb/ft)	Grade	Top (ftKB)	Set Depth (ftKB)
Surface Casing	4/20/2005	8 5/8	24.00	?	16.0	683.0
Production	4/23/2005	4 1/2	11.60	M-80	16.0	7,315.0

## Cement

Des	Top (ftKB)	Btm (ftKB)
SURFACE CASING CEMENT	16.0	683.0
PRODUCTION CASING CEMENT	3,650.0	7,315.0

## Tubing Components

Item Des	OD (in)	Wt (lb/ft)	Grade	Jts	Len (ft)
Pup Joint	2 3/8	4.70	J-55	2	20.00
Tubing	2 3/8	4.70	J-55	216	7,106.61
Pump Seating Nipple	2 3/8	1.10		1	1.20
Notched collar	2 3/8			1	0.40

## Perforation Data

Zone	Bnch/St g	Entered Shot Total	Top (ftKB)	Btm (ftKB)	Date
NIOBRARA, ORIGINAL HOLE	B	24	6,944.0	6,956.0	8/20/2012
CODELL, ORIGINAL HOLE		56	7,159.0	7,173.0	5/9/2005

## Stimulations & Treatments

Bnch/Stg	Date	Zone	Primary Job Type
	5/27/2005	CODELL, ORIGINAL HOLE	DRILLING/COMPLETION - ORIGINAL

Comment

Total Add Amount Proppant Ottawa 253187 lb	Total Clean Volume... 124614.00	Vol Slurry Tot (gal) 124614.00	Vol Gas Tot (MCF)
Avg Treat Pressure (psi) 6,130.0	Max Treat Pressure (psi) 6,506.0	Avg Treat Rate (bbl/min) 14.10	Max Treat Rate (bbl/min) 14.80

Bnch/Stg	Date	Zone	Primary Job Type
	8/20/2012	CODELL, ORIGINAL HOLE	RE-FRAC & RECOMPLETE

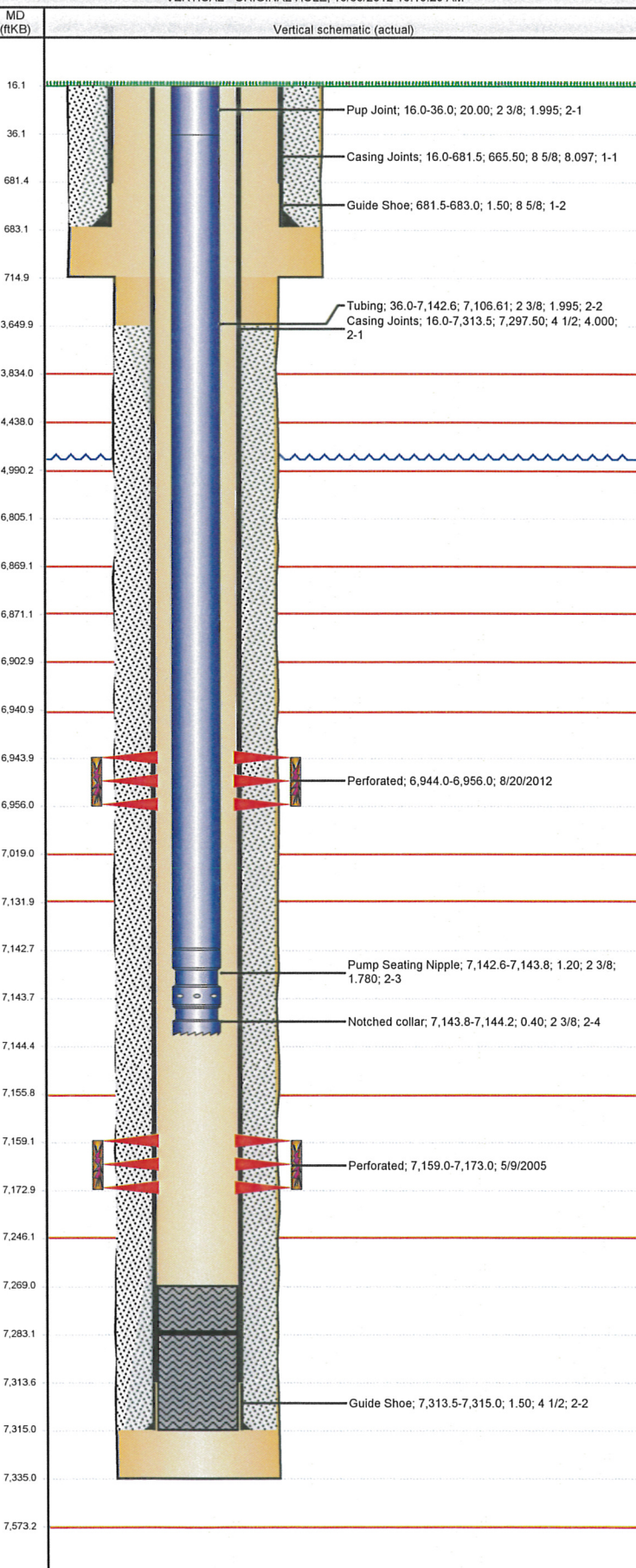
Comment

Total Add Amount Ottawa 239328.6 lb	Total Clean Volume... 132853.14	Vol Slurry Tot (gal) 143744.16	Vol Gas Tot (MCF)
Avg Treat Pressure (psi) 4,014.0	Max Treat Pressure (psi) 4,362.0	Avg Treat Rate (bbl/min) 14.60	Max Treat Rate (bbl/min) 15.00



Well Name: MOSER H26-14

VERTICAL - ORIGINAL HOLE, 10/30/2012 10:19:29 AM



## Stimulations & Treatments

Brch/Stg	Date	Zone	Primary Job Type	
	8/20/2012	NIOBRARA, ORIGINAL HOLE	RE-FRAC & RECOMPLETE	
Comment				
Total Add Amount		Total Clean Volume...	Vol Slurry Tot (gal)	Vol Gas Tot (MCF)
Ottawa 232292.5 lb		149928.24	160485.36	
Avg Treat Pressure (psi)	Max Treat Pressure (psi)	Avg Treat Rate (bbl/min)	Max Treat Rate (bbl/min)	
4,320.0	4,986.0	33.00	38.20	

## Other In Hole

Run Date	Des	OD (in)	Top (ftKB)	Btm (ftKB)

## Logs

Date	Type	Top (ftKB)	Btm (ftKB)
4/23/2005	COMPENSATED DENSITY	3,000.0	7,323.0
4/23/2005	INDUCTION	715.0	7,323.0
5/7/2005	CEMENT BOND	3,500.0	7,259.0