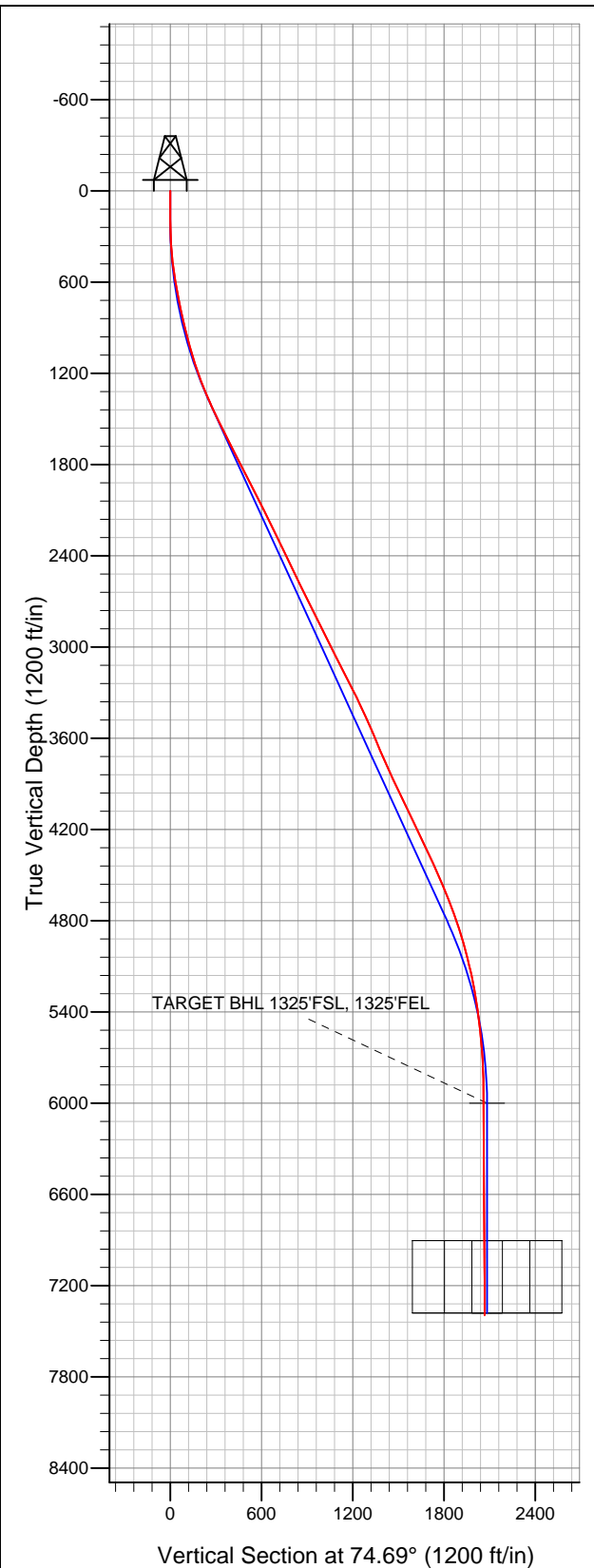


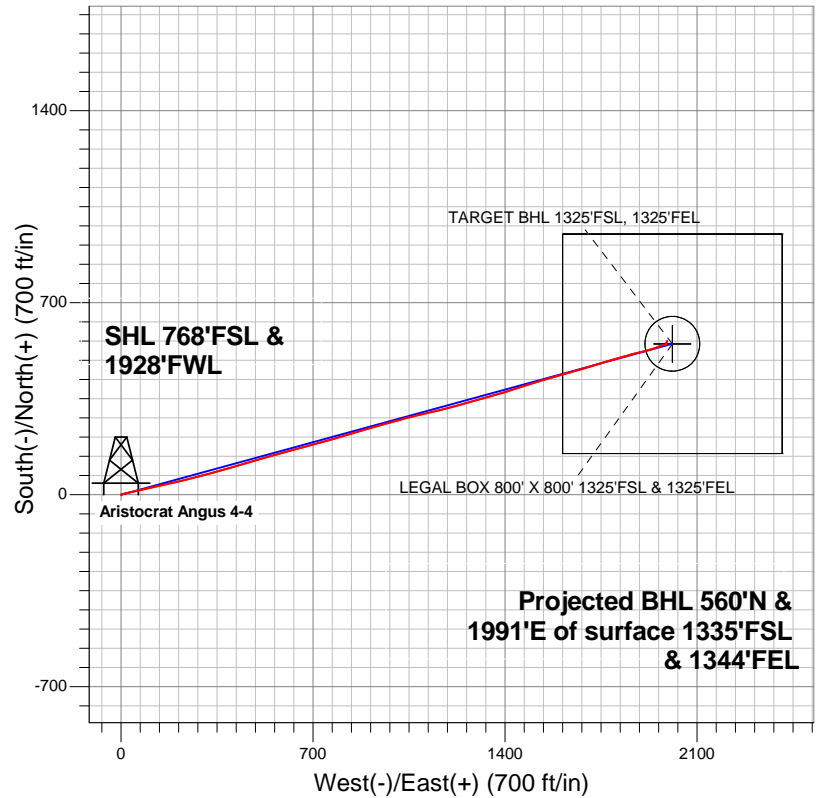
Well Name: Aristocrat Angus 4-4

Surface Location: Aristocrat Angus 4-6-4 Pad Sec.4-T3N-R65W
North American Datum 1983 US State Plane 1983Colorado Northern Zone
Ground Elevation: 4820.0

+N/-S	+E/-W	Northing	Easting	Latitude	Longitude	Slot
0.0	0.0	1334718.34	3231451.01	40.249230	-104.670800	
Original Well Elev		WELL @ 4832.0ft (Original Well Elev)				



EnCana Oil & Gas Weld County CO



LEGEND

- Wellbore #1
- Aristocrat Angus 4-4, Wellbore #1, Plan #1 (7-16-12)R V0
- Survey #1

Final Survey Plot

Projected Final Survey -
7816'MD & 7393'TVD @ 2068'VS
0.30 deg Inc 343.20 deg AZ

Project: SEC.4-T3N-R65W
Site: Aristocrat Angus 4-6-4 Pad Sec.4-T3N-R65W
Well: Aristocrat Angus 4-4
Plan: Wellbore #1



EnCana Oil & Gas Weld County CO

SEC.4-T3N-R65W

Aristocrat Angus 4-6-4 Pad Sec.4-T3N-R65W

Aristocrat Angus 4-4

Wellbore #1

Survey: Survey #1

Standard Survey Report

27 July, 2012

Company:	EnCana Oil & Gas Weld County CO	Local Co-ordinate Reference:	Well Aristocrat Angus 4-4
Project:	SEC.4-T3N-R65W	TVD Reference:	WELL @ 4832.0ft (Original Well Elev)
Site:	Aristocrat Angus 4-6-4 Pad Sec.4-T3N-R65W	MD Reference:	WELL @ 4832.0ft (Original Well Elev)
Well:	Aristocrat Angus 4-4	North Reference:	True
Wellbore:	Wellbore #1	Survey Calculation Method:	Minimum Curvature
Design:	Wellbore #1	Database:	Landmark

Project	SEC.4-T3N-R65W, Weld County, Colorado		
Map System:	US State Plane 1983	System Datum:	Mean Sea Level
Geo Datum:	North American Datum 1983		Using Well Reference Point
Map Zone:	Colorado Northern Zone		Using geodetic scale factor

Site		Aristocrat Angus 4-6-4 Pad Sec.4-T3N-R65W			
Site Position:		Northing:	1,334,725.59ft	Latitude:	40.249250
From:	Lat/Long	Easting:	3,231,445.36ft	Longitude:	-104.670820
Position Uncertainty:	0.0 ft	Slot Radius:	"	Grid Convergence:	0.54 °

Well	Aristocrat Angus 4-4					
Well Position	+N/-S	0.0 ft	Northing:	1,334,718.34 ft	Latitude:	40.249230
	+E/-W	0.0 ft	Easting:	3,231,451.01 ft	Longitude:	-104.670800
Position Uncertainty		0.0 ft	Wellhead Elevation:	ft	Ground Level:	4,820.0 ft

Wellbore	Wellbore #1				
Magnetics	Model Name	Sample Date	Declination (°)	Dip Angle (°)	Field Strength (nT)
	IGRF2010	7/16/2012	8.65	66.91	52,948

Design	Wellbore #1				
Audit Notes:					
Version:	1.0	Phase:	ACTUAL	Tie On Depth:	0.0
Vertical Section:	Depth From (TVD) (ft)	+N/-S (ft)	+E/-W (ft)	Direction (°)	
	0.0	0.0	0.0	74.69	

Survey Program		Date	7/27/2012		
From (ft)	To (ft)	Survey (Wellbore)	Tool Name	Description	
94.0	7,816.0	Survey #1 (Wellbore #1)	MWD	MWD - Standard	

Survey	Wellbore Data									
	Measured Depth (ft)	Inclination (°)	Azimuth (°)	Vertical Depth (ft)	+N/-S (ft)	+E/-W (ft)	Vertical Section (ft)	Dogleg Rate (°/100ft)	Build Rate (°/100ft)	Turn Rate (°/100ft)
Main Survey	0.0	0.00	0.00	0.0	0.0	0.0	0.0	0.00	0.00	0.00
	94.0	0.30	28.50	94.0	0.2	0.1	0.2	0.32	0.32	0.00
	185.0	0.40	67.20	185.0	0.5	0.5	0.7	0.28	0.11	42.53
	276.0	1.90	70.50	276.0	1.2	2.2	2.5	1.65	1.65	3.63
	368.0	3.70	71.80	367.9	2.6	6.5	7.0	1.96	1.96	1.41
	459.0	6.10	78.60	458.5	4.5	14.0	14.7	2.71	2.64	7.47
	551.0	8.50	77.60	549.8	6.9	25.5	26.4	2.61	2.61	-1.09
	643.0	11.10	76.20	640.4	10.5	40.7	42.0	2.84	2.83	-1.52
	735.0	11.00	76.30	730.7	14.7	57.8	59.7	0.11	-0.11	0.11
	829.0	12.20	79.30	822.8	18.6	76.3	78.5	1.43	1.28	3.19
	923.0	14.20	77.20	914.3	23.0	97.3	99.9	2.19	2.13	-2.23
	1,016.0	15.20	76.70	1,004.3	28.4	120.3	123.5	1.08	1.08	-0.54
	1,110.0	17.20	77.90	1,094.5	34.1	145.9	149.7	2.16	2.13	1.28

Company:	EnCana Oil & Gas Weld County CO	Local Co-ordinate Reference:	Well Aristocrat Angus 4-4
Project:	SEC.4-T3N-R65W	TVD Reference:	WELL @ 4832.0ft (Original Well Elev)
Site:	Aristocrat Angus 4-6-4 Pad Sec.4-T3N-R65W	MD Reference:	WELL @ 4832.0ft (Original Well Elev)
Well:	Aristocrat Angus 4-4	North Reference:	True
Wellbore:	Wellbore #1	Survey Calculation Method:	Minimum Curvature
Design:	Wellbore #1	Database:	Landmark

Survey										
Measured Depth (ft)	Inclination (°)	Azimuth (°)	Vertical Depth (ft)	+N/-S (ft)	+E/-W (ft)	Vertical Section (ft)	Dogleg Rate (°/100ft)	Build Rate (°/100ft)	Turn Rate (°/100ft)	
1,204.0	18.90	77.40	1,183.9	40.4	174.3	178.8	1.82	1.81	-0.53	
1,297.0	21.20	77.20	1,271.3	47.4	205.4	210.7	2.47	2.47	-0.22	
1,391.0	23.40	75.80	1,358.2	55.7	240.1	246.3	2.41	2.34	-1.49	
1,485.0	25.70	75.60	1,443.7	65.4	278.0	285.3	2.45	2.45	-0.21	
1,578.0	25.60	75.10	1,527.6	75.5	316.9	325.6	0.26	-0.11	-0.54	
1,672.0	27.00	73.70	1,611.8	86.8	357.0	367.2	1.63	1.49	-1.49	
1,766.0	27.10	74.40	1,695.5	98.5	398.1	410.0	0.35	0.11	0.74	
1,859.0	27.30	73.50	1,778.3	110.3	439.0	452.5	0.49	0.22	-0.97	
1,953.0	26.40	74.40	1,862.1	122.0	479.8	494.9	1.05	-0.96	0.96	
2,047.0	27.70	74.20	1,945.8	133.6	520.9	537.7	1.39	1.38	-0.21	
2,140.0	26.70	73.50	2,028.5	145.4	561.7	580.2	1.13	-1.08	-0.75	
2,234.0	26.40	75.10	2,112.6	156.8	602.2	622.2	0.83	-0.32	1.70	
2,328.0	26.50	74.60	2,196.8	167.7	642.6	664.1	0.26	0.11	-0.53	
2,421.0	25.50	75.50	2,280.4	178.2	682.0	704.8	1.16	-1.08	0.97	
2,515.0	25.50	74.40	2,365.2	188.7	721.1	745.3	0.50	0.00	-1.17	
2,609.0	25.80	74.20	2,450.0	199.7	760.2	786.0	0.33	0.32	-0.21	
2,702.0	25.50	73.30	2,533.8	211.0	798.9	826.2	0.53	-0.32	-0.97	
2,796.0	26.50	73.90	2,618.3	222.6	838.4	867.4	1.10	1.06	0.64	
2,890.0	26.70	73.90	2,702.3	234.3	878.9	909.5	0.21	0.21	0.00	
2,983.0	26.40	74.20	2,785.5	245.7	918.8	951.1	0.35	-0.32	0.32	
3,077.0	26.80	74.20	2,869.6	257.2	959.3	993.2	0.43	0.43	0.00	
3,171.0	26.60	74.10	2,953.6	268.7	1,000.0	1,035.4	0.22	-0.21	-0.11	
3,264.0	25.90	75.80	3,037.0	279.4	1,039.7	1,076.5	1.10	-0.75	1.83	
3,358.0	27.90	77.00	3,120.8	289.4	1,081.0	1,119.1	2.20	2.13	1.28	
3,452.0	26.90	76.70	3,204.2	299.2	1,123.1	1,162.3	1.07	-1.06	-0.32	
3,545.0	26.60	75.50	3,287.3	309.3	1,163.8	1,204.1	0.66	-0.32	-1.29	
3,639.0	24.90	76.20	3,372.0	319.3	1,203.4	1,245.0	1.84	-1.81	0.74	
3,732.0	24.60	73.30	3,456.4	329.5	1,240.9	1,283.9	1.34	-0.32	-3.12	
3,826.0	24.40	75.30	3,542.0	340.1	1,278.4	1,322.9	0.91	-0.21	2.13	
3,920.0	22.90	74.80	3,628.1	349.8	1,314.9	1,360.6	1.61	-1.60	-0.53	
4,013.0	22.70	72.90	3,713.8	359.8	1,349.5	1,396.6	0.82	-0.22	-2.04	
4,107.0	23.80	73.90	3,800.2	370.4	1,385.0	1,433.7	1.24	1.17	1.06	
4,201.0	25.40	72.80	3,885.6	381.6	1,422.5	1,472.8	1.77	1.70	-1.17	
4,294.0	25.50	71.60	3,969.6	393.8	1,460.6	1,512.7	0.56	0.11	-1.29	
4,388.0	26.10	72.60	4,054.2	406.4	1,499.5	1,553.6	0.79	0.64	1.06	
4,482.0	25.10	74.90	4,139.0	417.8	1,538.5	1,594.2	1.50	-1.06	2.45	
4,575.0	25.80	73.70	4,223.0	428.6	1,576.9	1,634.2	0.93	0.75	-1.29	
4,669.0	24.80	73.30	4,308.0	440.0	1,615.5	1,674.3	1.08	-1.06	-0.43	
4,763.0	25.10	74.80	4,393.2	450.9	1,653.6	1,714.0	0.74	0.32	1.60	
4,856.0	24.40	73.50	4,477.6	461.5	1,691.0	1,752.9	0.95	-0.75	-1.40	
4,950.0	23.70	73.00	4,563.5	472.6	1,727.7	1,791.2	0.78	-0.74	-0.53	
5,044.0	21.10	72.80	4,650.4	483.1	1,762.0	1,827.0	2.77	-2.77	-0.21	
5,137.0	20.00	73.70	4,737.5	492.5	1,793.2	1,859.6	1.23	-1.18	0.97	
5,231.0	17.90	74.10	4,826.4	501.0	1,822.5	1,890.1	2.24	-2.23	0.43	
5,325.0	17.10	74.10	4,916.0	508.7	1,849.7	1,918.4	0.85	-0.85	0.00	
5,418.0	14.90	76.70	5,005.4	515.2	1,874.5	1,944.0	2.49	-2.37	2.80	
5,512.0	13.50	76.70	5,096.5	520.5	1,897.0	1,967.1	1.49	-1.49	0.00	
5,606.0	11.40	74.90	5,188.3	525.5	1,916.6	1,987.3	2.27	-2.23	-1.91	
5,699.0	9.80	72.80	5,279.7	530.2	1,933.0	2,004.4	1.77	-1.72	-2.26	
5,793.0	8.40	69.50	5,372.5	535.0	1,947.1	2,019.3	1.59	-1.49	-3.51	
5,887.0	6.80	69.00	5,465.7	539.4	1,958.7	2,031.6	1.70	-1.70	-0.53	
5,980.0	5.80	67.00	5,558.2	543.2	1,968.2	2,041.8	1.10	-1.08	-2.15	
6,074.0	4.60	85.80	5,651.8	545.3	1,976.3	2,050.2	2.20	-1.28	20.00	
6,168.0	2.20	61.00	5,745.6	546.5	1,981.7	2,055.6	2.94	-2.55	-26.38	

Company:	EnCana Oil & Gas Weld County CO	Local Co-ordinate Reference:	Well Aristocrat Angus 4-4
Project:	SEC.4-T3N-R65W	TVD Reference:	WELL @ 4832.0ft (Original Well Elev)
Site:	Aristocrat Angus 4-6-4 Pad Sec.4-T3N-R65W	MD Reference:	WELL @ 4832.0ft (Original Well Elev)
Well:	Aristocrat Angus 4-4	North Reference:	True
Wellbore:	Wellbore #1	Survey Calculation Method:	Minimum Curvature
Design:	Wellbore #1	Database:	Landmark

Survey									
Measured Depth (ft)	Inclination (°)	Azimuth (°)	Vertical Depth (ft)	+N/-S (ft)	+E/-W (ft)	Vertical Section (ft)	Dogleg Rate (°/100ft)	Build Rate (°/100ft)	Turn Rate (°/100ft)
6,261.0	1.80	62.30	5,838.5	548.0	1,984.5	2,058.8	0.43	-0.43	1.40
6,355.0	0.40	130.70	5,932.5	548.5	1,986.1	2,060.4	1.80	-1.49	72.77
6,422.6	0.46	109.79	6,000.2	548.2	1,986.5	2,060.8	0.25	0.09	-30.92
TARGET BHL 1325'FSL, 1325'FEL									
6,449.0	0.50	103.40	6,026.5	548.2	1,986.7	2,061.0	0.25	0.14	-24.24
6,543.0	0.30	11.10	6,120.5	548.3	1,987.2	2,061.4	0.63	-0.21	-98.19
6,637.0	0.60	14.30	6,214.5	549.0	1,987.4	2,061.8	0.32	0.32	3.40
6,732.0	0.60	346.70	6,309.5	550.0	1,987.4	2,062.1	0.30	0.00	-29.05
6,826.0	0.40	19.90	6,403.5	550.8	1,987.4	2,062.3	0.37	-0.21	35.32
6,920.0	0.60	358.60	6,497.5	551.6	1,987.5	2,062.6	0.29	0.21	-22.66
7,015.0	0.90	8.70	6,592.5	552.8	1,987.6	2,063.0	0.34	0.32	10.63
7,109.0	1.10	40.80	6,686.5	554.2	1,988.3	2,064.0	0.62	0.21	34.15
7,203.0	1.00	17.40	6,780.5	555.7	1,989.1	2,065.2	0.46	-0.11	-24.89
7,297.0	0.60	58.40	6,874.5	556.8	1,989.8	2,066.2	0.72	-0.43	43.62
7,325.6	0.48	49.57	6,903.1	556.9	1,990.0	2,066.4	0.52	-0.43	-30.88
TARGET CIRCLE 1325'FSL & 1325'FEL - LEGAL BOX 800' X 800' 1325'FSL & 1325'FEL									
7,392.0	0.30	4.10	6,969.5	557.3	1,990.2	2,066.7	0.52	-0.27	-68.47
7,486.0	0.40	42.60	7,063.5	557.7	1,990.4	2,067.1	0.27	0.11	40.96
7,580.0	0.80	15.00	7,157.5	558.6	1,990.8	2,067.7	0.51	0.43	-29.36
7,675.0	0.40	352.30	7,252.4	559.6	1,991.0	2,068.1	0.48	-0.42	-23.89
7,771.0	0.30	343.20	7,348.4	560.2	1,990.8	2,068.1	0.12	-0.10	-9.48
7,816.0	0.30	343.20	7,393.4	560.4	1,990.8	2,068.1	0.00	0.00	0.00

Checked By: _____	Approved By: _____	Date: _____
-------------------	--------------------	-------------