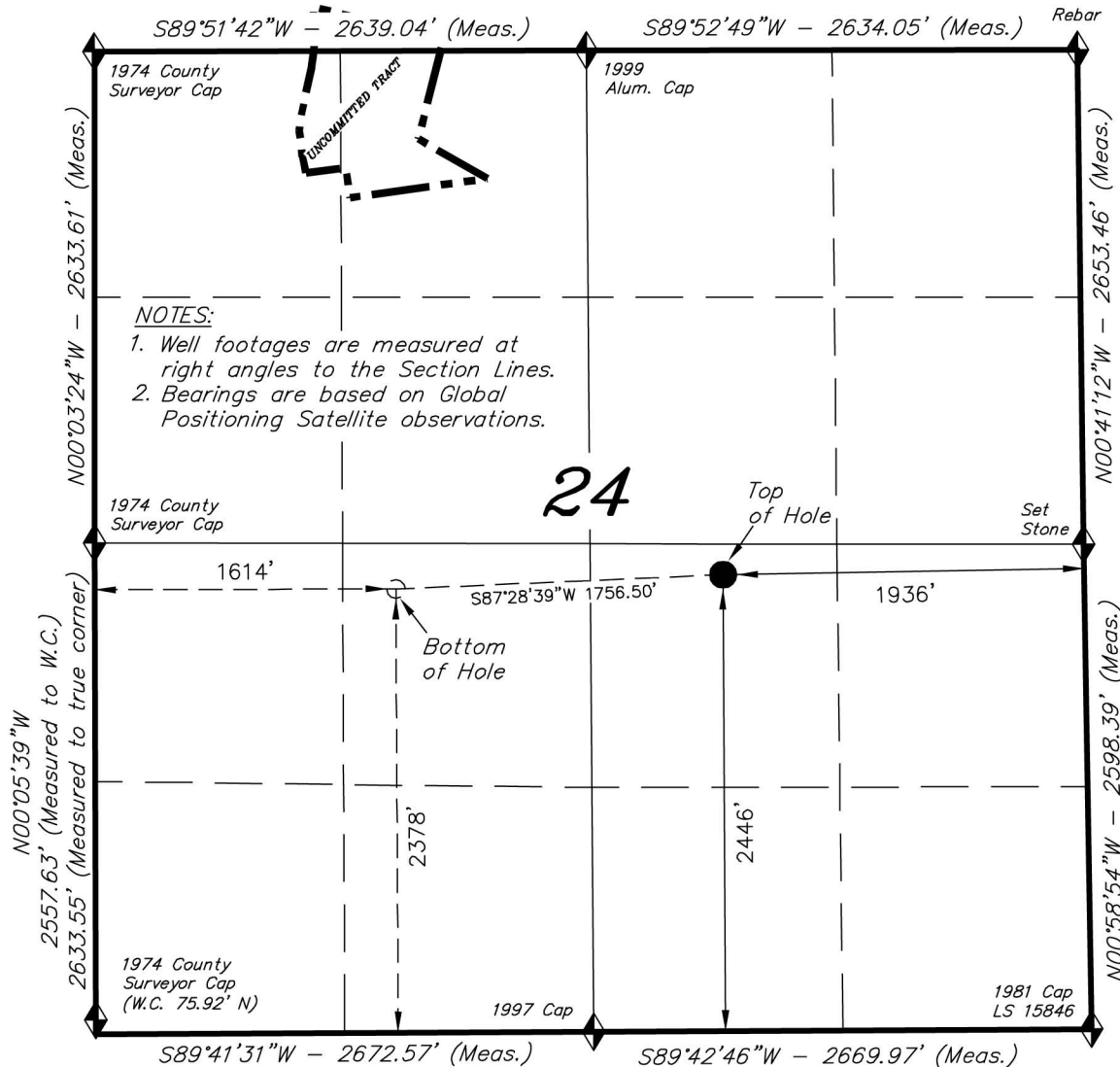


T6S, R93W, 6th P.M.



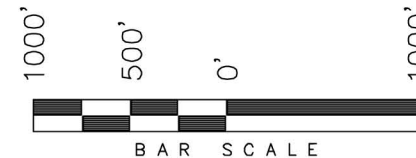
NOTES:

1. Well footages are measured at right angles to the Section Lines.
2. Bearings are based on Global Positioning Satellite observations.

ENCANA OIL & GAS (USA) INC

WELL LOCATION, ALP FEDERAL 24-11B (J24), LOCATED AS SHOWN IN THE NW 1/4 SE 1/4 OF SECTION 24, T6S, R93W, 6th P.M. GARFIELD COUNTY, COLORADO.

TARGET BOTTOM HOLE, ALP FEDERAL 24-11B (J24), LOCATED AS SHOWN IN THE NW 1/4 SE 1/4 OF SECTION 24, T6S, R93W, 6th P.M. GARFIELD COUNTY, COLORADO.



WELL LOCATION:

ALP FEDERAL 24-11B (J24)

ELEV. UNGRADED GROUND = 5678.9'

THIS IS TO CERTIFY THAT THE ABOVE PLAT WAS PREPARED FROM FIELD NOTES OF SURVEYS MADE BY ME OR UNDER MY SUPERVISION. THE LOCATION HAS BEEN STAKED ON THE GROUND AS SHOWN ON THE PLAT, AND THAT THE SAME ARE TRUE AND CORRECT TO THE BEST OF MY KNOWLEDGE AND BELIEF.

REGISTRATION No. 30290125
STATE OF COLORADO
REGISTERED LAND SURVEYOR

◆ = SECTION CORNERS LOCATED

Basis of elevation is the Rifle 2 Triangulation Station. 39°31'53.80" N Lat. & 107°47'07.78" W Long. (NAD 83). Elevation = 5323.1' (NAVD88).

NAD 83 (SURFACE LOCATION)	
LATITUDE =	39°30'41.34" (39.511484)
LONGITUDE =	107°43'18.47" (107.721796)
NAD 83 (BOTTOM HOLE LOCATION)	
LATITUDE =	39°30'40.59" (39.511276)
LONGITUDE =	107°43'40.85" (107.728014)

TRI STATE LAND SURVEYING & CONSULTING

180 NORTH VERNAL AVE. - VERNAL, UTAH 84078
(435) 781-2501

DATE SURVEYED: 12-08-11	SURVEYED BY: C.D.S.	SHEET 2h OF 11
DATE DRAWN: 03-19-12	DRAWN BY: M.W.	
REVISED: 06-26-12 - M.W.	SCALE: 1" = 1000'	