

TSN, R90W, 6th P.M.

SWEPI LP

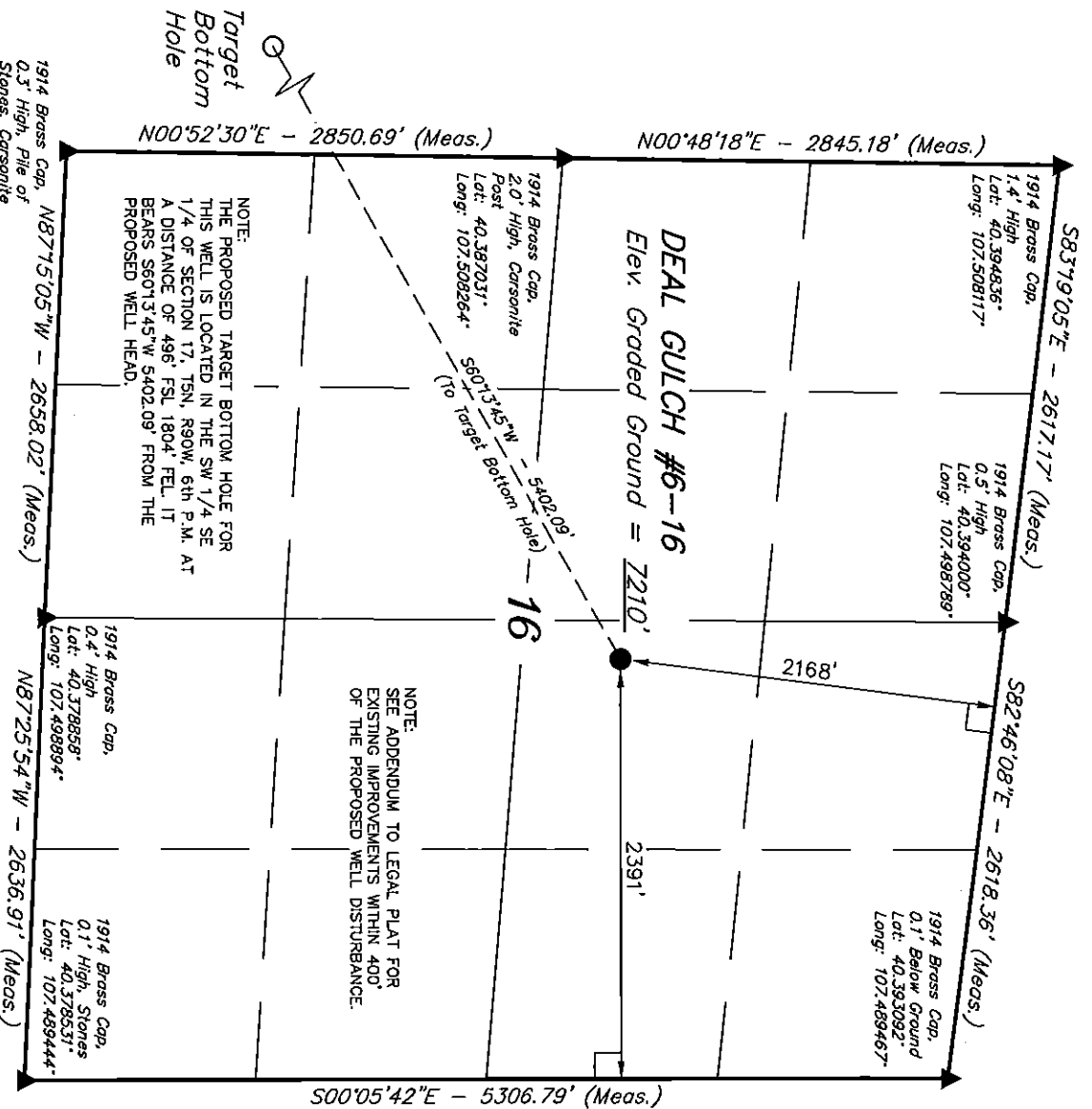
Well location, DEAL GULCH #6-16 (SURFACE LOCATION), located as shown in the SW 1/4 NE 1/4 of Section 16, T5N, R90W, 6th P.M., Moffat County, Colorado.

BASIS OF ELEVATION

SPOT ELEVATION AT THE NORTHEAST CORNER OF SECTION 31, T5N, R90W, 6th P.M. TAKEN FROM THE HAMILTON QUADRANGLE, COLORADO, MOFFAT COUNTY, 7.5 MINUTE QUAD (TOPOGRAPHIC MAP) PUBLISHED BY THE UNITED STATES DEPARTMENT OF THE INTERIOR, GEOLOGICAL SURVEY. SAID ELEVATION IS MARKED AS BEING 6664 FEET.

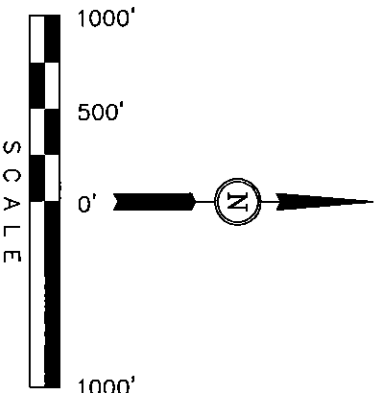
BASIS OF BEARINGS

BASIS OF BEARINGS IS A G.P.S. OBSERVATION.



NOTE:
SEE APPENDUM TO LEGAL PLAT FOR
EXISTING IMPROVEMENTS WITHIN 400'
OF THE PROPOSED WELL DISTURBANCE.

NOTE:
THE PROPOSED TARGET BOTTOM HOLE FOR
THIS WELL IS LOCATED IN THE SW 1/4 SE
1/4 OF SECTION 17, T5N, R90W, 6th P.M. AT
A DISTANCE OF 496' FSL 1804' FEL. IT
BEARS S60°13'45\"W 5402.09' FROM THE
PROPOSED WELL HEAD.



CERTIFICATE

THIS IS TO CERTIFY THAT THE ABOVE PLAT WAS PREPARED FROM
FIELD NOTES OF ACTUAL SURVEYS MADE BY ME OR UNDER MY
SUPERVISION AND THAT THE SAME ARE TRUE AND CORRECT TO THE
BEST OF MY KNOWLEDGE AND BELIEF.

REGISTERED LAND SURVEYOR
RECEIVED
STATE OF COLORADO
09-28-12

UTIAH ENGINEERING & LAND SURVEYING
85 SOUTH 200 EAST - VERNAL, UTAH 84078
(435) 789-1017

SCALE 1" = 1000'
DATE SURVEYED: 08-09-12 DATE DRAWN: 09-28-12

PARTY B.H. N.F. Z.L.
REFERENCES G.L.O. PLAT
WEATHER HOT
FILE SWEPI LP

LEGEND:

- 90° SYMBOL
- PROPOSED WELL HEAD.
- SECTION CORNERS LOCATED.

PDOP = 1.3	
NAD 83 (SURFACE LOCATION)	
LATITUDE = 40°23'16.55" (40.387931)	
LONGITUDE = 107°29'52.94" (107.498039)	
NAD 27 (SURFACE LOCATION)	
LATITUDE = 40°23'16.64" (40.387956)	
LONGITUDE = 107°29'50.71" (107.497419)	

75N, R90W, 6th P.M.

SWEPI LP

S89°52'E - 5171.10' (G.L.O.)

1914 Brass Cap,
1.4' High
Lat: 40.394836°
Long: 107.508117°

17

NOTE:
THE PROPOSED SURFACE LOCATION FOR THIS
WELL IS LOCATED IN THE SW 1/4 NE 1/4 OF
SECTION 16, T5N, R90W, 6th P.M. AT A
DISTANCE OF 2168' FNL 2391' FEL. IT BEARS
N60°13'45"E 5402.09' FROM THE PROPOSED
TARGET BOTTOM HOLE.

1914 G.L.O. Brass
Cap, 0.8' High
Lat: 40.379211°
Long: 107.32214°

N89°59'42"W - 5237.19' (Meas.)

Target
Bottom
Hole

49.6'

1804'

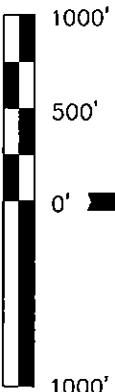
N60°13'45"E - 5402.09'

N00°52'30"E - 2850.69' (Meas.)

N00°48'18"E - 2845.18' (Meas.)

1914 Brass Cap,
2.0' High, Corsonite
Post
Lat: 40.387037°
Long: 107.508264°

Surface
Location



SCALE

CERTIFICATE

THIS IS TO CERTIFY THAT THE ABOVE PLAT WAS PREPARED FROM
FIELD NOTES OF ACTUAL SURVEYS MADE BY ME OR UNDER MY
SUPERVISION AND THAT THE SAME ARE TRUE AND CORRECT TO THE
BEST OF MY KNOWLEDGE AND BELIEF.

REGISTERED LAND SURVEYOR
REGISTRATION NO. 10000
STATE OF COLORADO
09-28-12

Well location, DEAL GULCH #6-16 (TARGET
BOTTOM HOLE), located as shown in the SW 1/4
SE 1/4 of Section 17, T5N, R90W, 6th P.M.,
Moffat County, Colorado.

BASIS OF ELEVATION

SPOT ELEVATION AT THE NORTHEAST CORNER OF SECTION 31,
T5N, R90W, 6th P.M. TAKEN FROM THE HAMILTON
QUADRANGLE, COLORADO, MOFFAT COUNTY, 7.5 MINUTE QUAD
(TOPOGRAPHIC MAP) PUBLISHED BY THE UNITED STATES
DEPARTMENT OF THE INTERIOR, GEOLOGICAL SURVEY. SAID
ELEVATION IS MARKED AS BEING 6664 FEET.

BASIS OF BEARINGS

BASIS OF BEARINGS IS A G.P.S. OBSERVATION.

LEGEND:

└ = 90° SYMBOL

● = PROPOSED WELL HEAD.

▲ = SECTION CORNERS LOCATED.

1914 Brass Cap,
0.3' High, Pile of
Stones, Corsonite
Post
Lat: 40.379208°
Long: 107.508422°

NAD 83 (TARGET BOTTOM HOLE)
LATITUDE = 40°22'50.06" (40.380572)
LONGITUDE = 107°30'53.52" (107.514867)
NAD 27 (TARGET BOTTOM HOLE)
LATITUDE = 40°22'50.15" (40.380597)
LONGITUDE = 107°30'51.29" (107.504247)

UNTIAH ENGINEERING & LAND SURVEYING
85 SOUTH 200 EAST - VERNAL, UTAH 84078
(435) 789-1017

SCALE	1" = 1000'	DATE SURVEYED:	08-09-12	DATE DRAWN:	09-28-12
-------	------------	----------------	----------	-------------	----------

PARTY	B.H. N.F. Z.L.	REFERENCES	G.L.O. PLAT
WEATHER	HOT	FILE	SWEPI LP