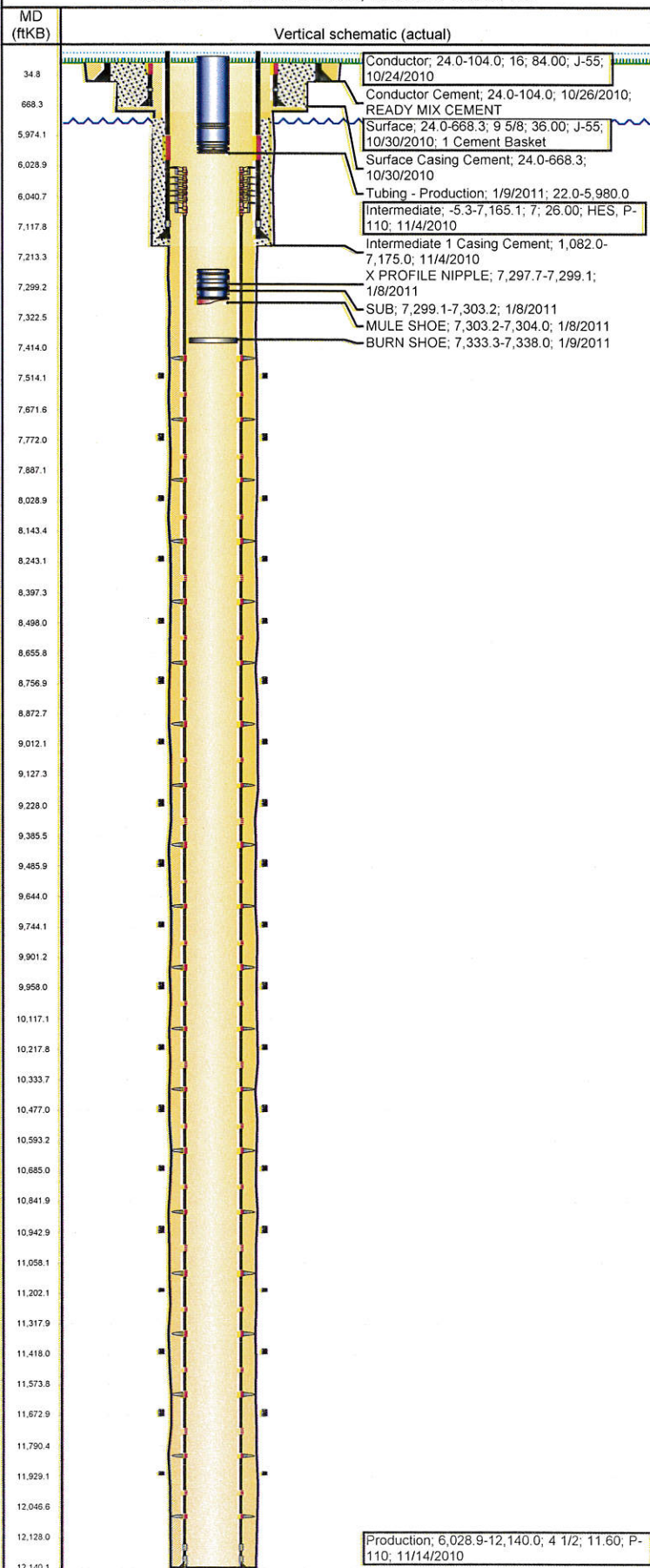


Well Name: STATE A36-99HZ

HORIZONTAL - ORIGINAL HOLE, 10/29/2012 10:33:57 AM



Well Header

API 05-123-32261	Business Unit WATTENBERG	District 15	Well Config HORIZONTAL
Original KB Elevation (ft) 4,653.00	KB - GL / MSL (ftKB) 24.00	Spud Date 10/30/2010	P & A Date

Comment

Directions To Well
WCR 64 & 59, E 0.1 MILES, S INTO

Congressional Location

Quarter 1	Quarter 2	Quarter 3	Quarter 4	Section	Township	Twnshp N...	Range	Rng E/W Dir
		NW	NW	36	6	N	64	W

Bottom Hole Location

North-South Distance (ft) 1,220.0	From N or S Line S	East-West Distance (ft) 460.0	From E or W Line E
--------------------------------------	-----------------------	----------------------------------	-----------------------

Plug Back Total Depths

Date	Depth (ftKB)	Method	Com

Wellbore Sections

Section Des	Size (in)	Act Top (ftKB)	Act Btm (ftKB)
CONDUCTOR	18 1/2	24.0	104.0
SURFACE	13 3/4	104.0	680.0
INTERMEDIATE	8 3/4	680.0	7,175.0
LATERAL	6 1/8	7,175.0	12,140.0

Zone Statuses

Zone Name	Status Date	Status	Job
NIOBRARA	1/4/2011	PR	DRILLING/COMPLETION - ORIGINAL, 10/25/2010 16:00

Casing Strings

Conductor, 104.0ftKB

Casing Description	Run Date	OD (in)	Wt/Len (l...)	Grade	Top (ftKB)	Set Depth...
Conductor	10/24/2010	16	84.00	J-55	24.0	104.0

Surface, 668.3ftKB

Casing Description	Run Date	OD (in)	Wt/Len (l...)	Grade	Top (ftKB)	Set Depth...
Surface	10/30/2010	9 5/8	36.00	J-55	24.0	668.3

Intermediate, 7,165.1ftKB

Casing Description	Run Date	OD (in)	Wt/Len (l...)	Grade	Top (ftKB)	Set Depth...
Intermediate	11/4/2010	7	26.00	P-110	-5.3	7,165.1

Production, 12,140.0ftKB

Casing Description	Run Date	OD (in)	Wt/Len (l...)	Grade	Top (ftKB)	Set Depth...
Production	11/14/2010	4 1/2	11.60	P-110	6,028.9	12,140.0

Cement

Description	Top Depth (ftKB)	Bottom Depth (ftKB)
Conductor Cement	24.0	104.0
Surface Casing Cement	24.0	668.3
Intermediate 1 Casing Cement	1,082.0	7,175.0

Tubing Components

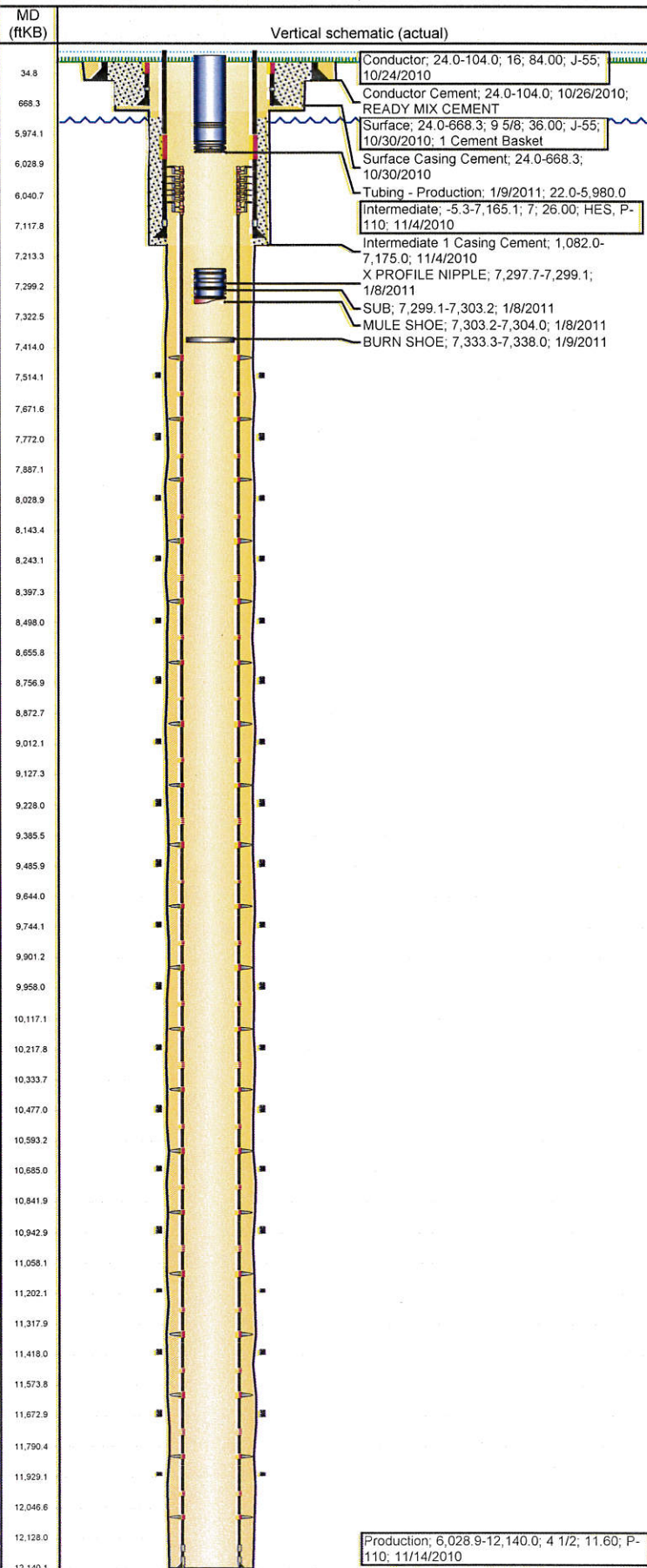
Item Des	OD (in)	Wt (lb/ft)	Grade	Jts	Len (ft)	Btm (ftKB)	Btm (TVD) (ftKB)
EUE 8rd Tubing	2 3/8	4.70	J-55	193	5,924.20	5,946.2	5,945.9
XN Nipple	2 3/8	4.70	N-80	1	1.55	5,947.7	5,947.4
EUE 8rd Tubing	2 3/8	4.70	J-55	1	30.80	5,978.5	5,978.2
Pump Seating Nipple	2 3/8	0.00	N-80	1	1.20	5,979.7	5,979.4
Notched collar	2 3/8	0.00	J-55	1	0.30	5,980.0	5,979.7

Perforation Data

Zone	Bnch/St g	Entered Shot Total	Top (ftKB)	Btm (ftKB)	Date

Well Name: STATE A36-99HZ

HORIZONTAL - ORIGINAL HOLE, 10/29/2012 10:33:58 AM



Stimulations & Treatments

Date	Zone	Primary Job Type
12/2/2010	CODELL, ORIGINAL HOLE	DRILLING/COMPLETION - ORIGINAL
Technical Result	Tech Result Details	Tech Result Note
Success	According to Plan	

Comment
(CODELL)

(STAGE #1): AFTER ISIP, SHUT DOWN DUE TO PUMP ISSUES (OVER HEATING & BAD PACKING). DOWN 12 MIN.

(STAGE #2): AFTER BREAK, SHUT DOWN DUE TO FRAC PUMP ISSUES. DOWN 26 MIN.

(STAGE #3): MORE PUMP ISSUES, PROBLEMS KEEPING RATE.

(STAGE #4): AFTER SW 1/2# HAD PROBLEMS WITH HYDRO. SWAPPED BACK TO SW TO FLUSH. DOWN 20 MINUTES. ADDED 200 BBLS TO GEL STAGE. MORE PUMP ISSUES (FLUID END). MAX RATE OF 54BPM.

(STAGE #5): MORE PUMP ISSUES (OVERHEATING).

(STAGE #6): FOUR OPERATIONAL PUMPS REMAINING, MAX ATTAINABLE RATE OF 43 BPM. SHUT DOWN AFTER BREAK TO REPAIR PUMPS AND WAIT FOR MORE. DOWN 5-1/2 HOURS.

(STAGE #7): FR QUIT RUNNING AND COULD NOT GET IT GOING, FRAC PUMPS KICKED. CAME BACK ON WITH GEL STAGE 60 BBLS EARLY. EXTENDED GEL PAD BY 70 BBLS.

(STAGE #8): HAD ISSUES WITH VICON PUMP, SWAPPED PUMPS AND CONTINUED PUMPING.

(STAGE #10): ISSUES WITH FR. MORE PUMP ISSUES (FLUID END). SWAPPED PUMPS AND RESUMED.

(STAGE #11): SHUT DOWN AFTER BREAK TO SWAP DRY GEL UNITS AND REPAIR PUMPS. DOWN 7 HOURS. WASHED CHECK VALVE OUT ON MISSILE DURING 4# SB EXCEL STAGE. FLUSHED WELL WITH ONE PUMP BYPASSING MISSILE. FLUID COMING OUT AT SURFACE OF OBSERVATION WELL (STATE A36-21). DROPPED BALL #12 AND LET FALL WHILE WAITING FOR PART TO REPAIR MISSILE AND PULL PINNACLE TOOLS OUT OF OBSERVATION WELL. DOWN 5 HOURS.

(STAGE #12): SCREW TOOK OFF ON SB EXCEL AND WENT TO 7 PSA.

(STAGE #13): T-BELT FOR THE SAND LOCKED UP DURING 1/2# SW. FLUSHED WELL AND SHUT DOWN. DOWN 16 MIN.

(STAGE #17): SCREENED OUT ON 1/2# SLICKWATER. FLOWED BACK 300BBLS. DROPPED BALL #18. USED LEFT OVER 40/70 AND SB EXCEL FROM #17 ON #18, 19 & 20.

(STAGE #18): 3# HIT FORMATION CAUSED PRESSURE TO INCREASE. CUT SAND, BUT COULDN'T FLUSH. FLOWED WELL BACK. DROPPED BALL #19.

(STAGE #19): WASHED OUT MISSILE DURING 1/2# STAGE. FLUSHED WELL WITH ONE PUMP BYPASSING MISSILE. DOWN 4 HOURS. RESUMED FRAC, SCREENED OUT DURING 3#.

(STAGE #20): SCREENED OUT DURING 4# STAGE. BEGAN FLOW BACK.

Other In Hole

Run Date	Des	OD (in)	Top (ftKB)	Btm (ftKB)
1/8/2011	MULE SHOE	2 3/8	7,303.2	7,304.0
1/8/2011	SUB	2 3/8	7,299.1	7,303.2
1/8/2011	X PROFILE NIPPLE	2 3/8	7,297.7	7,299.1
1/9/2011	BURN SHOE	3 5/8	7,333.3	7,338.0

Logs

Date	Type	Top (ftKB)	Btm (ftKB)
11/23/2010	CBL/CCL/GR	24.0	5,992.0
1/4/2011	COLLAR LOCATOR	0.0	4,574.0
9/25/2012	GYRO	0.0	5,900.0