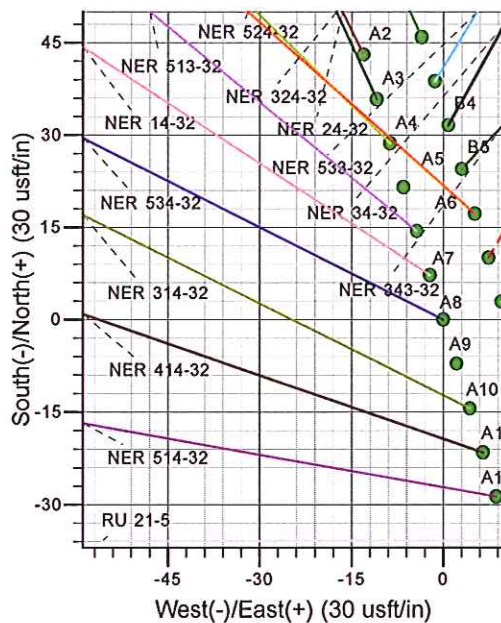
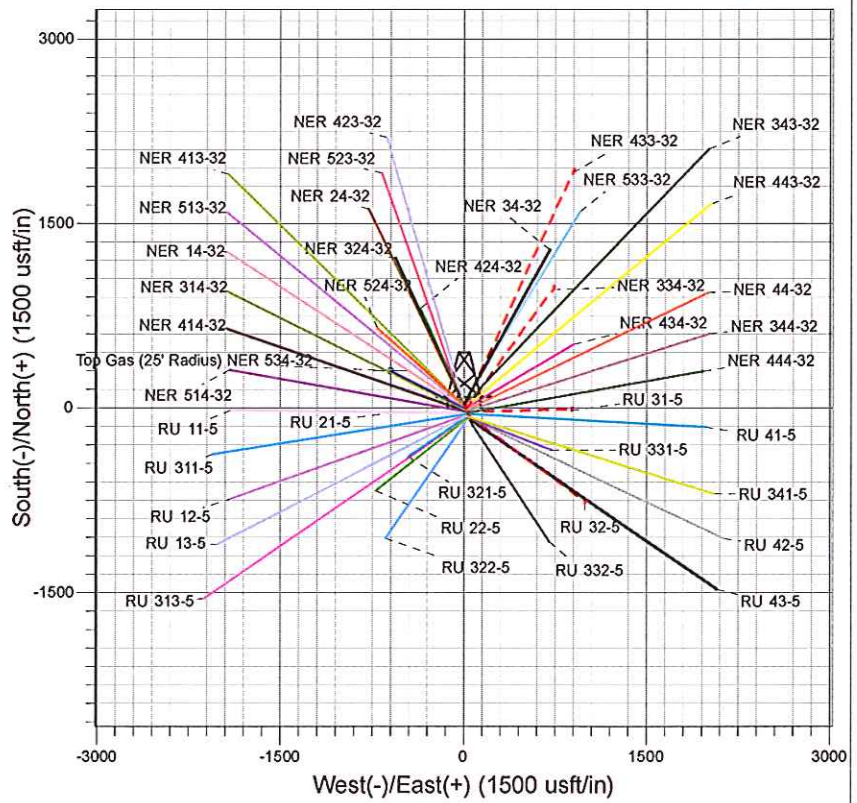
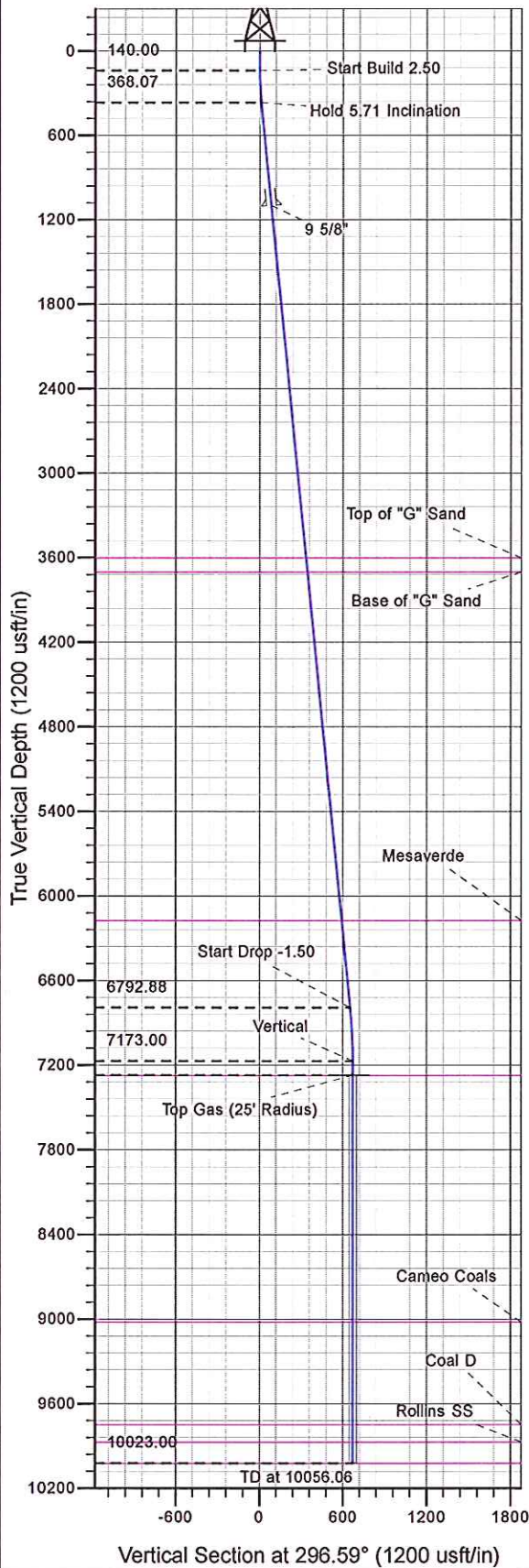




Well Name: NER 534-32  
 Surface Location: Single Cellar RU 23-5 Pad  
 North American Datum 1983 , US State Plane 1983 , Colorado Central Zone  
 Ground Elevation: 7602.00  
 +N/-S 0.00 +E/-W 0.00 Northing 1606075.00 Easting 2351134.40 Latitude 39.47491 Longitude -107.79886 Slot A8  
 KELLY BUSHING @ 7628.00usft



Project: RU 05-07S-093W  
 Site: Single Cellar RU 23-5 Pad  
 Well: NER 534-32  
 Design #2 22Jun12 kjs



Azimuths to True North  
 Magnetic North: 10.21°  
 Magnetic Field  
 Strength: 52264.8snT  
 Dip Angle: 65.77°  
 Date: 8/26/2011  
 Model: IGRF2005-10

ANNOTATIONS									
MD	Inc	Azi	TVD	+N/-S	+E/-W	Vsect	Departure	Annotation	
140.00	0.00	0.00	140.00	0.00	0.00	0.00	0.00	Start Build 2.50	
368.45	5.71	296.59	368.07	5.09	-10.17	11.38	11.38	Hold 5.71 Inclination	
6825.31	5.71	296.59	6792.88	292.74	-584.75	653.93	653.93	Start Drop -1.50	
7206.06	0.00	0.00	7173.00	301.23	-601.71	672.90	672.90	Vertical	
7306.06	0.00	0.00	7273.00	301.23	-601.71	672.90	672.90	Top Gas	
10056.06	0.00	0.00	10023.00	301.23	-601.71	672.90	672.90	TD at 10056.06	