

SWEPI LP

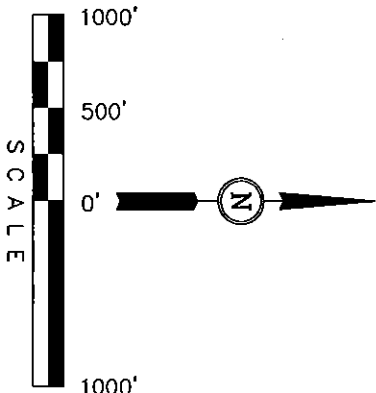
Well location, DEAL GULCH #3-16, located as shown in the SW 1/4 NE 1/4 of Section 16, T5N, R90W, 6th P.M., Moffat County, Colorado.

BASIS OF ELEVATION

SPOT ELEVATION AT THE NORTHEAST CORNER OF SECTION 31,
T5N, R90W, 6th P.M. TAKEN FROM THE HAMILTON
QUADRANGLE, COLORADO, MOFFAT COUNTY, 7.5 MINUTE QUAD
(TOPOGRAPHIC MAP) PUBLISHED BY THE UNITED STATES
DEPARTMENT OF THE INTERIOR, GEOLOGICAL SURVEY. SAID
ELEVATION IS MARKED AS BEING 6864 FEET.

BASIS OF BEARINGS

BASIS OF BEARINGS IS A G.P.S. OBSERVATION.



CERTIFICATA

THIS IS TO CERTIFY THAT THE ABOVE PLAT WAS PREPARED FROM FIELD NOTES OF ACTUAL SURVEYS MADE BY ME OR UNDER MY SUPERVISION AND THAT THE SAME ARE TRUE AND CORRECT TO THE BEST OF MY KNOWLEDGE AND BELIEF.

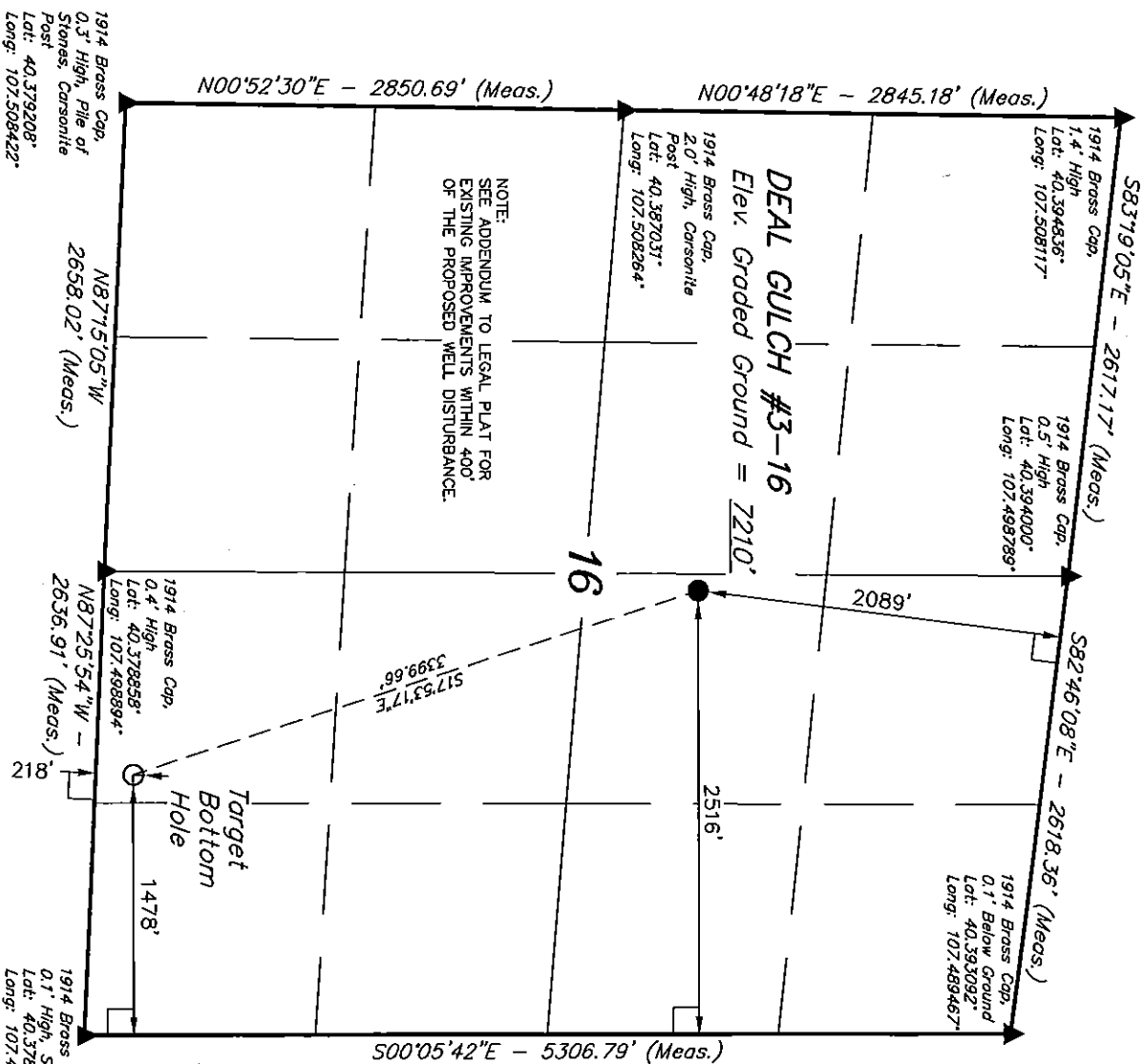
REGISTERED AND SHARBYR
REGISTRATION AND VZED
STATE OF COLORADO

UNTAH ENGINEERING & LAND SURVEYING
85 SOUTH 200 EAST - VERNAL, UTAH 84078
(435) 789-1017

SCALE	DATE SURVEYED:	DATE DRAWN:
1" = 1000'	08-09-12	08-16-12

B.H.	N.F.	Z.L.
G.L.O.	PLAT	

	HOT	SWEEP LP
1	1	1
2	1	1
3	1	1
4	1	1
5	1	1
6	1	1
7	1	1
8	1	1
9	1	1
10	1	1
11	1	1
12	1	1
13	1	1
14	1	1
15	1	1
16	1	1
17	1	1
18	1	1
19	1	1
20	1	1
21	1	1
22	1	1
23	1	1
24	1	1
25	1	1
26	1	1
27	1	1
28	1	1
29	1	1
30	1	1
31	1	1
32	1	1
33	1	1
34	1	1
35	1	1
36	1	1
37	1	1
38	1	1
39	1	1
40	1	1
41	1	1
42	1	1
43	1	1
44	1	1
45	1	1
46	1	1
47	1	1
48	1	1
49	1	1
50	1	1
51	1	1
52	1	1
53	1	1
54	1	1
55	1	1
56	1	1
57	1	1
58	1	1
59	1	1
60	1	1
61	1	1
62	1	1
63	1	1
64	1	1
65	1	1
66	1	1
67	1	1
68	1	1
69	1	1
70	1	1
71	1	1
72	1	1
73	1	1
74	1	1
75	1	1
76	1	1
77	1	1
78	1	1
79	1	1
80	1	1
81	1	1
82	1	1
83	1	1
84	1	1
85	1	1
86	1	1
87	1	1
88	1	1
89	1	1
90	1	1
91	1	1
92	1	1
93	1	1
94	1	1
95	1	1
96	1	1
97	1	1
98	1	1
99	1	1
100	1	1



NOTE:
SEE ADDENDUM TO LEGAL PLAT FOR
EXISTING IMPROVEMENTS WITHIN 400'
OF THE PROPOSED WELL DISTURBANCE

DEAL GULCH #3-16
Elev. Graded Ground = 7210'

1914 Brass Cap,
2.0' High, Carsonites
Post
Lat: 40.387031°
Long: 107.508264°

2017/17 (Meas.)	
1914 Brass Cap, 1.4' High Lat: 40.394836° Long: 107.508117°	1914 Brass C 0.5' High Lat: 40.394836° Long: 107.508117°

1914 Brass Cop.
0.5' High
Lot: 40.394000
Long: 107.498789

1914 Brass Cap,
0.1' Below Ground
Lat: 40.393092°
Long: 107.489467°

517.5317"E
3399.66'

N87°15'05"W
2658.02' (Meas.)

1914 Brass Cap,
0.3' High, Pile of
Stones, Carsonite
Post
Lat: 40.379208°
Long: 107.508422°

N87°25'54"W -
2636.91' (Meas.)

1914 Brass Cap,
0.4' High
Lot: 40.378858'
Long: 107.498894'

Target
Bottom

1914 Brass Cap,
0.1' High, Stones
Lat: 40.378531°
Long: 107.489444°

PDOP = 1.4

┐ = 90° SYMBOL

● = PROPOSED WELL HEAD.

▲ = SECTION CORNERS LOCATED

NAD 83 (TARGET BOTTOM HOLE)		NAD 83 (SURFACE LOCATION)	
LATITUDE = 40.22 45.53° (40.379314)	LATITUDE = 40.23 17.48° (40.386192)		
LONGITUDE = 107.29 41.08° (107.494747)	LONGITUDE = 107.29 54.56° (107.498489)		
NAD 27 (TARGET BOTTOM HOLE)		NAD 27 (SURFACE LOCATION)	
LATITUDE = 40.22 45.62° (40.379339)	LATITUDE = 40.23 17.56° (40.386217)		
LONGITUDE = 107.29 38.87° (107.494131)	LONGITUDE = 107.29 52.33° (107.497869)		