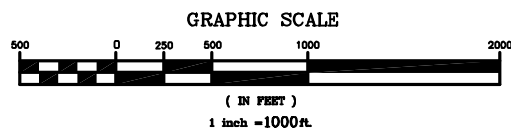
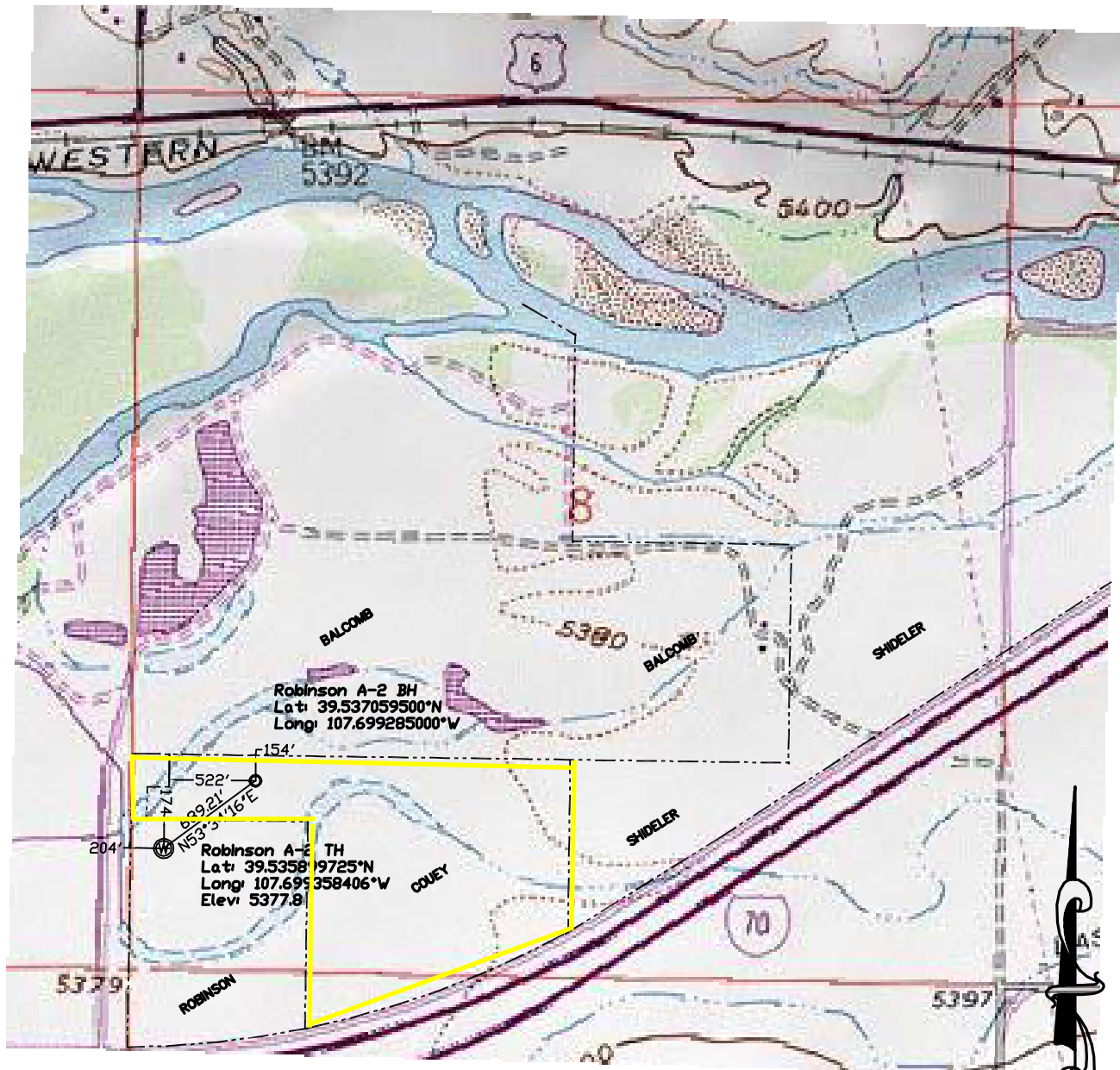


Antero Resources Corporation
Robinson Well A-2
situated in
Sec. 8, T. 6 S., R. 92 W. of the 6th P.M.
County of Garfield, State of Colorado



SurvCo, Inc.
RTK GPS and Conventional Land Surveying Services
826-1/2 Grand Avenue
Post Office Box 2782
Glenwood Springs, CO. 81602-2782
Phone: (970) 945-5945 Fax: (970) 945-5946
Email: survco@earthlink.net

Surveyed: 21/JAN./2007	Scale: 1 inch = 1000 feet
Drafted: 11/Feb./2007	.dwg: ROBINSON A2 PLAT6
Approved:	Sheet: 6 of 6

Plat No. 6
"Footages Plat"