

T12S, R94W, 6th P.M.

GUNNISON ENERGY CORPORATION

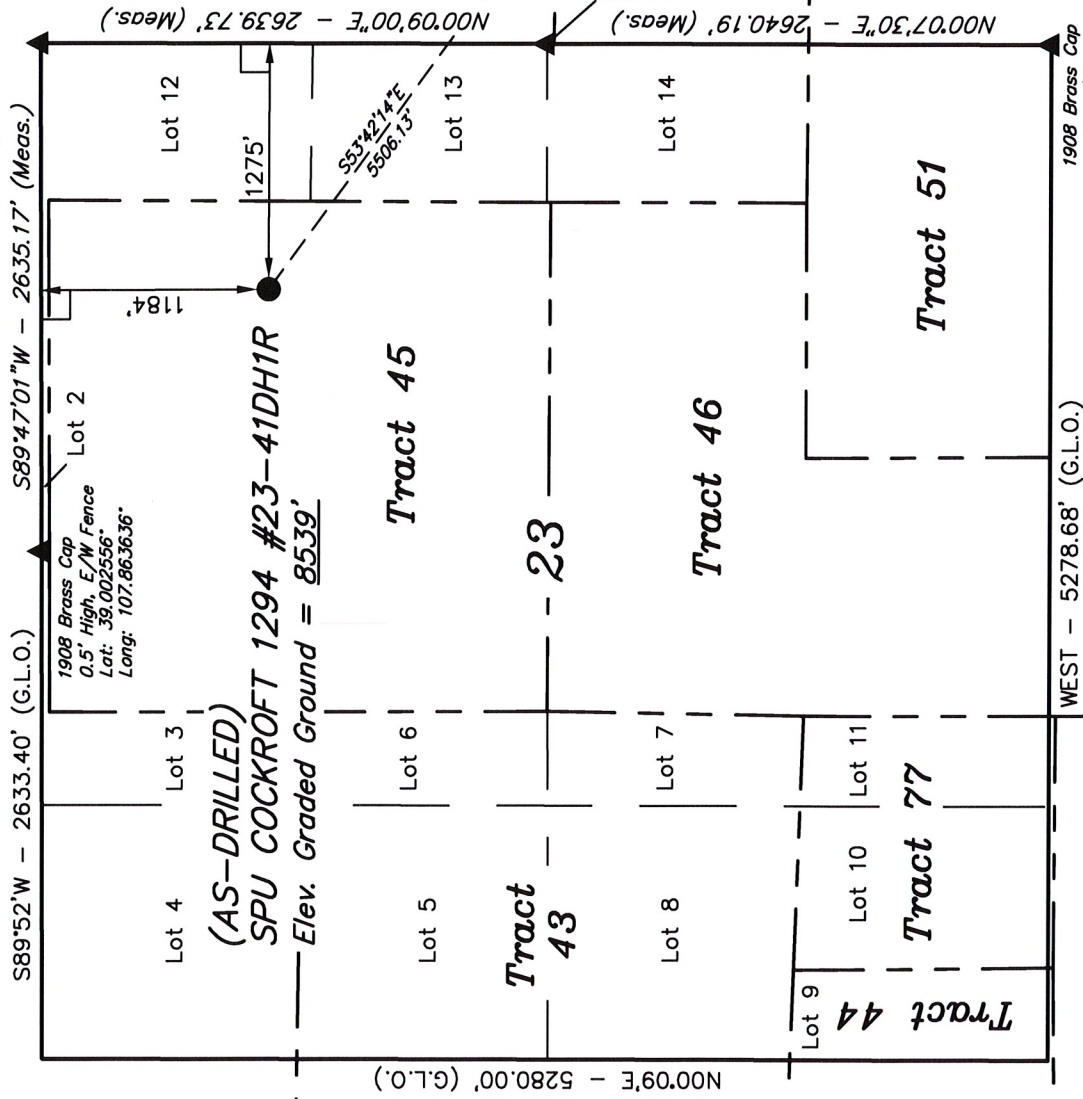
Well location, SPU COCKROFT 1294 #23-41DH1R (AS-DRILLED SURFACE LOCATION), located as shown in Tract 45 of Section 23, T12S, R94W, 6th P.M., Delta County, Colorado.

BASIS OF ELEVATION

SPOT ELEVATION (CEDAR) LOCATED IN THE NE 1/4 OF SECTION 34, T13S, R94W, 6th P.M. TAKEN FROM NATIONAL GEODETIC SURVEY DATA. SAID ELEVATION IS REPORTED AS BEING 6466 FEET.

BASIS OF BEARINGS

BASIS OF BEARINGS IS A G.P.S. OBSERVATION.



WEST - 5278.68' (G.L.O.)

NOTE:  
SEE ADDENDUM TO LEGAL PLAT FOR EXISTING IMPROVEMENTS WITHIN 400' OF THE PROPOSED WELL DISTURBANCE.

LEGEND:

- = 90° SYMBOL
- = PROPOSED WELL HEAD.
- ▲ = SECTION CORNERS LOCATED.

NOTE:  
THE PROPOSED TARGET BOTTOM HOLE FOR THIS WELL IS LOCATED IN LOT 21 OF SECTION 24, T12S, R94W, 6th P.M. AT A DISTANCE OF 832' FSL 2109' FEL. IT BEARS S53°42'14"E 5506.13' FROM THE AS-DRILLED WELL HEAD.

NAD 83 (SURFACE LOCATION)	
LATITUDE = 38°59'57.55"	(38.999319)
LONGITUDE = 107°51'31.91"	(107.858864)
NAD 27 (SURFACE LOCATION)	
LATITUDE = 38°59'57.62"	(38.999339)
LONGITUDE = 107°51'29.68"	(107.858244)
UTM NAD 27 ZONE 13-U.S. SURVEY FEET	
N: 14174454.77	E: 828309.84

PDOP = 1.7

REVISED: 10-17-12

UNTAH ENGINEERING & LAND SURVEYING  
85 SOUTH 200 EAST - VERNAL, UTAH 84078  
(435) 789-1017

SCALE 1" = 1000'	DATE SURVEYED: 10-08-12	DATE DRAWN: 10-09-12
PARTY B.B. B.J. T.B.	REFERENCES G.L.O. PLAT	
WEATHER WARM	FILE	
GUNNISON ENERGY CORPORATION		

CERTIFICATE  
THIS IS TO CERTIFY THAT THE ABOVE PLAT WAS PREPARED FROM FIELD NOTES OF ACTUAL SURVEYS MADE BY ME OR UNDER MY SUPERVISION AND THAT THE SAME ARE TRUE AND CORRECT TO THE BEST OF MY KNOWLEDGE AND BELIEF.  
REGISTERED LAND SURVEYOR  
REGISTRATION NO. 17492  
STATE OF COLORADO  
90-17-12