

GUNNISON ENERGY CORPORATION

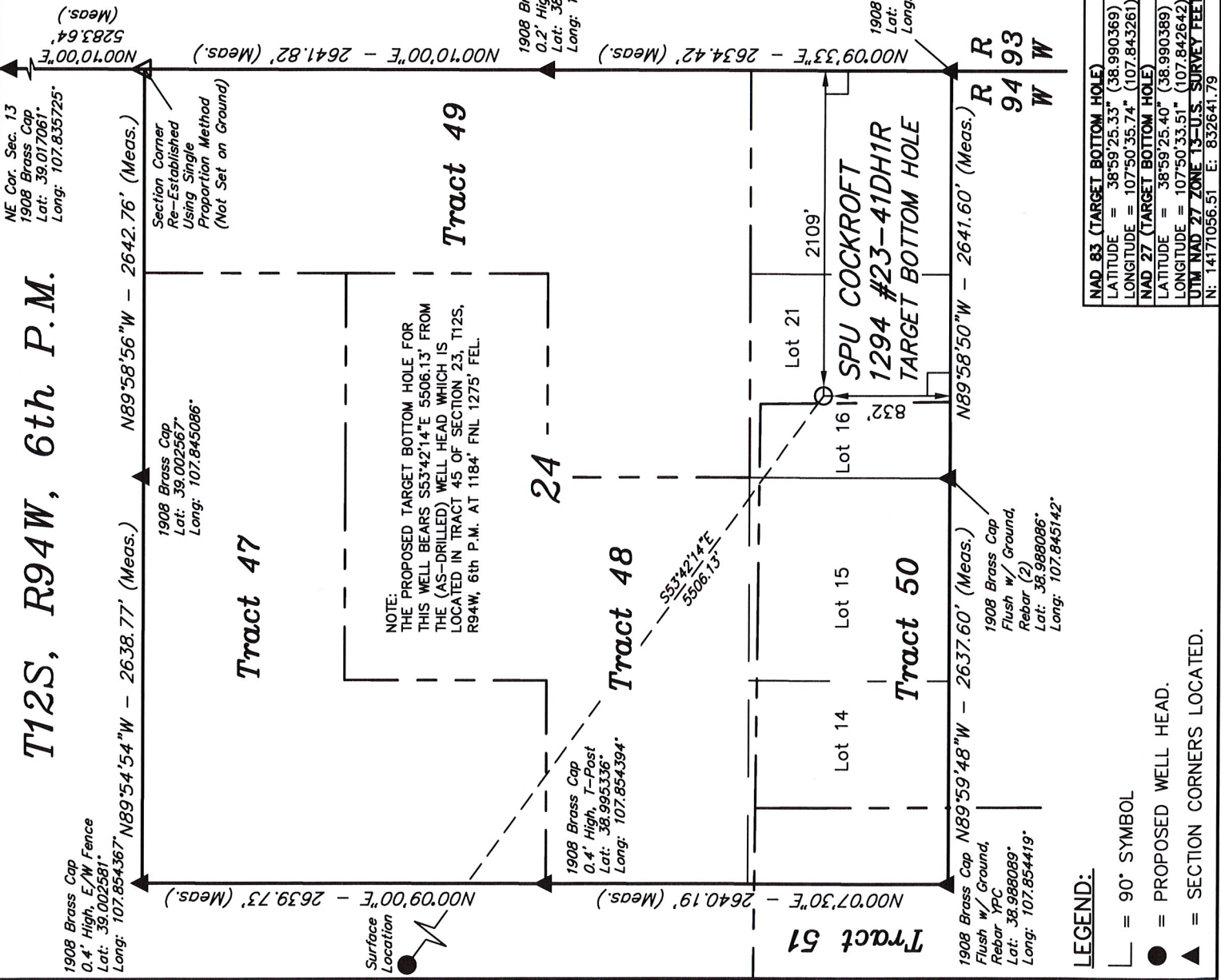
Well location, SPU COCKROFT 1294 #23-41DH1R (TARGET BOTTOM HOLE), located as shown in Lot 21 of Section 24, T12S, R94W, 6th P.M., Delta County, Colorado.

BASIS OF ELEVATION

SPOT ELEVATION (CEDAR) LOCATED IN THE NE 1/4 OF SECTION 34, T13S, R94W, 6th P.M. TAKEN FROM NATIONAL GEODETIC SURVEY DATA. SAID ELEVATION IS REPORTED AS BEING 6466 FEET.

BASIS OF BEARINGS

BASIS OF BEARINGS IS A G.P.S. OBSERVATION.



**CERTIFICATE**

THIS IS TO CERTIFY THAT THE ABOVE PLAT WAS PREPARED FROM FIELD NOTES OF ACTUAL SURVEYS MADE BY ME OR UNDER MY SUPERVISION AND THAT THE SAME ARE TRUE AND CORRECT TO THE BEST OF MY KNOWLEDGE AND BELIEF.

REGISTERED LAND SURVEYOR  
REGISTRATION NO. 17492  
STATE OF COLORADO  
90-17-12

REVISED: 10-17-12 T.B.  
REVISED: 09-13-12 S.L.

<b>UINTAH ENGINEERING &amp; LAND SURVEYING</b>	
<b>85 SOUTH 200 EAST - VERNAL, UTAH 84078</b>	
(435) 789-1017	
SCALE	DATE SURVEYED:
1" = 1000'	11-17-09
PARTY	REFERENCES
B.H. G.O. S.L.	G.L.O. PLAT
WEATHER	FILE
COLD	GUNNISON ENERGY CORPORATION

<b>NAD 83 (TARGET BOTTOM HOLE)</b>	
LATITUDE = 38°59'25.33" (38.990369)	
LONGITUDE = 107°50'35.74" (107.843261)	
<b>NAD 27 (TARGET BOTTOM HOLE)</b>	
LATITUDE = 38°59'25.40" (38.990389)	
LONGITUDE = 107°50'33.51" (107.842642)	
<b>UTM NAD 27 ZONE 13-U.S. SURVEY FEET</b>	
N: 14171056.51	E: 832641.79

**LEGEND:**

— = 90° SYMBOL

● = PROPOSED WELL HEAD.

▲ = SECTION CORNERS LOCATED.