



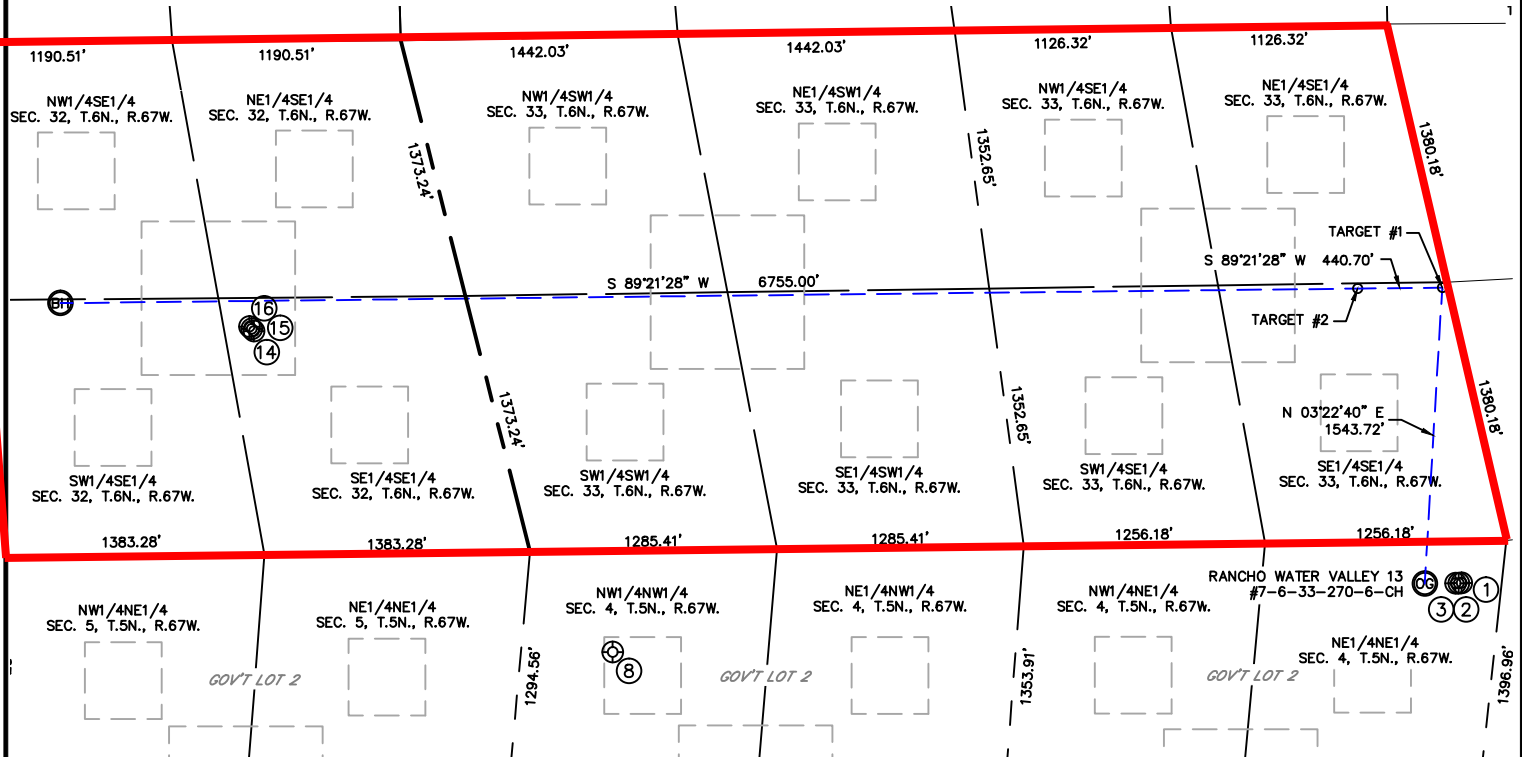
Lat40°, Inc. 1635 Foxtrail Drive, Suite 325 Loveland, CO 970-776-3321

# SITE SKETCH

RANCHO WATER VALLEY 13  
#7-6-33-270-6-CH

SECTION: 4  
TOWNSHIP: 5N  
RANGE: 67W

## PROPOSED SPACING UNIT



①

RANCHO WATER VALLEY  
3-9-4  
NE1/4NE1/4  
220' FNL  
207' FEL  
LAT-40.43549°N  
LONG-104.88787°W  
PDOP: 1.0  
ELEV: 4774'

②

RANCHO WATER VALLEY  
2-8-4  
NE1/4NE1/4  
220' FNL  
223' FEL  
LAT-40.43548°N  
LONG-104.88793°W  
PDOP: 1.0  
ELEV: 4775'

③

RANCHO WATER VALLEY  
2-6-4  
NE1/4NE1/4  
220' FNL  
239' FEL  
LAT-40.43548°N  
LONG-104.88799°W  
PDOP: 1.0  
ELEV: 4775'

⑧

PAVISTMA 4-23  
NW1/4NW1/4  
528' FNL  
475' FWL  
LAT-40.43007°N  
LONG-104.90434°W  
PDOP: 4.0  
ELEV: 4868'

⑭

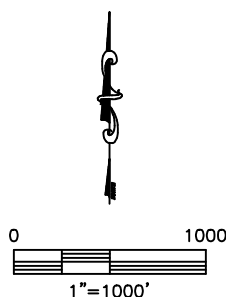
FRYE FARMS 9-7-32  
SE1/4SE1/4  
1162' FSL  
1114' FEL  
LAT-40.43920°N  
LONG-104.91043°W  
PDOP: 1.1  
ELEV: 4881'

⑮

FRYE FARMS 9-5-32  
SE1/4SE1/4  
1175' FSL  
1122' FEL  
LAT-40.43923°N  
LONG-104.91047°W  
PDOP: 1.1  
ELEV: 4881'

⑯

FRYE FARMS 7-5-32  
SE1/4SE1/4  
1186' FSL  
1129' FEL  
LAT-40.43927°N  
LONG-104.91051°W  
PDOP: 1.6  
ELEV: 4881'



DATE: 9/28/2012  
PROJECT#: 2011315