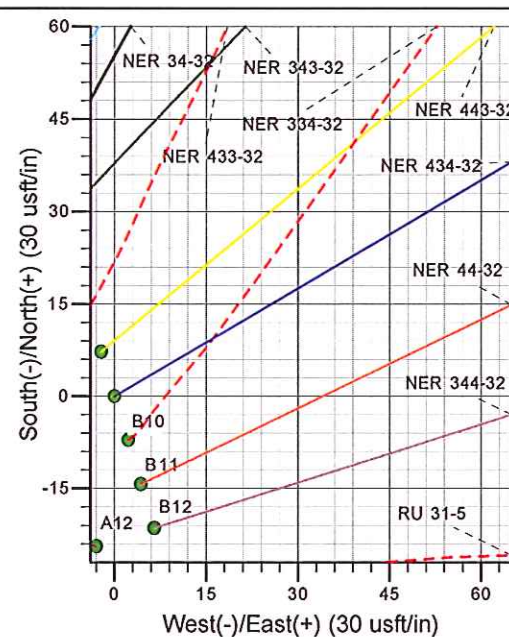
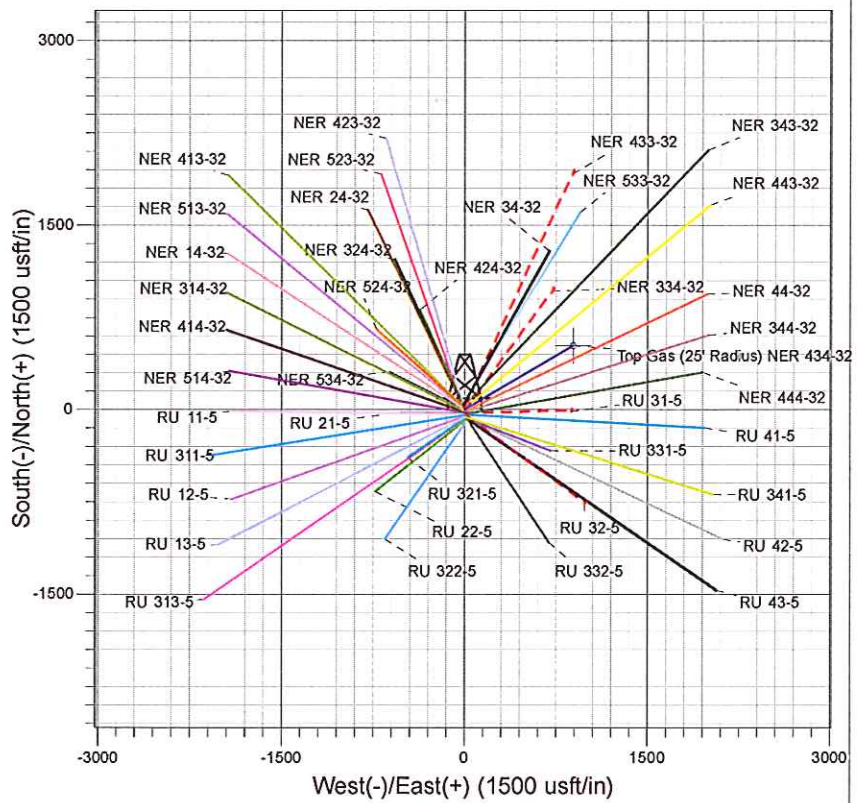
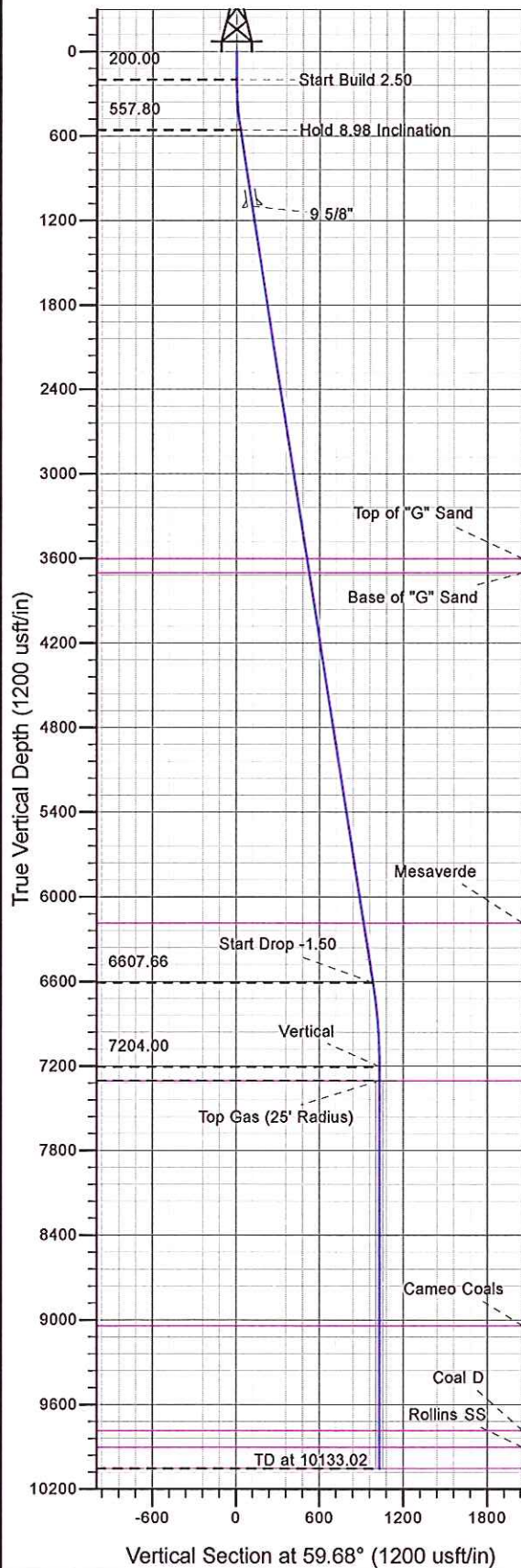




Well Name: NER 434-32  
 Surface Location: Single Cellar RU 23-5 Pad  
 North American Datum 1983 , US State Plane 1983 , Colorado Central Zone  
 Ground Elevation: 7602.00  
 +N/-S 0.00 +E/-W 0.00 Northing 1606070.40 Easting 2351146.00 Latitude 39.47490 Longitude -107.79882 Slot B9  
 KELLY BUSHING @ 7628.00usft



Project: RU 05-07S-093W  
 Site: Single Cellar RU 23-5 Pad  
 Well: NER 434-32  
 Plan #3 22Jun12 kjs



Azimuths to True North  
 Magnetic North: 10.58°  
 Magnetic Field  
 Strength: 52542.8snT  
 Dip Angle: 65.84°  
 Date: 10/21/2008  
 Model: IGRF2005-10

ANNOTATIONS									
MD	Inc	Azi	TVD	+N/-S	+E/-W	Vsect	Departure	Annotation	
200.00	0.00	0.00	200.00	0.00	0.00	0.00	0.00	Start Build 2.50	
559.27	8.98	59.68	557.80	14.19	24.26	28.10	28.10	Hold 8.98 Inclination	
6684.24	8.98	59.68	6607.66	496.98	849.67	984.34	984.34	Start Drop -1.50	
7283.02	0.00	0.00	7204.00	520.63	890.10	1031.18	1031.18	Vertical	
7383.02	0.00	0.00	7304.00	520.63	890.10	1031.18	1031.18	Top Gas	
10133.02	0.00	0.00	10054.00	520.63	890.10	1031.18	1031.18	TD at 10133.02	