



Lat40°, Inc. 1635 Foxtrail Drive, Suite 325 Loveland, CO 970-776-3321

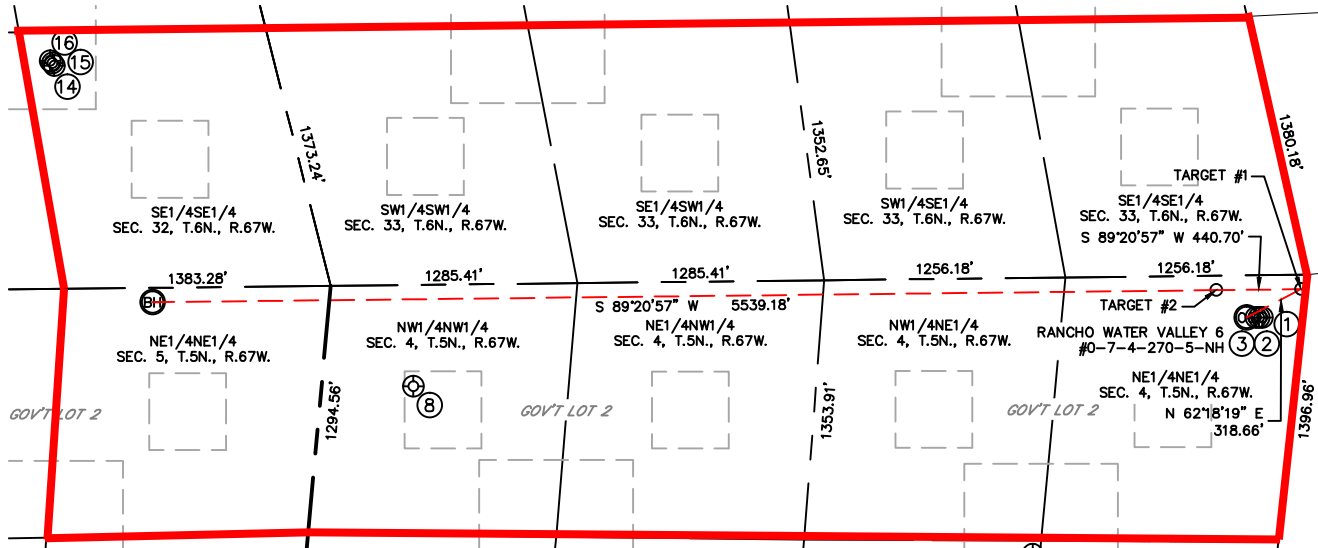
SITE SKETCH

RANCHO WATER VALLEY 6

#0-7-4-270-5-NH

SECTION: 4
TOWNSHIP: 5N
RANGE: 67W

PROPOSED SPACING UNIT



①

RANCHO WATER VALLEY
3-9-4
NE1/4NE1/4
220' FNL
207' FEL
LAT-40.43549°N
LONG-104.88787°W
PDOP: 1.0
ELEV: 4774'

②

RANCHO WATER VALLEY
2-8-4
NE1/4NE1/4
220' FNL
223' FEL
LAT-40.43548°N
LONG-104.88793°W
PDOP: 1.0
ELEV: 4775'

③

RANCHO WATER VALLEY
2-6-4
NE1/4NE1/4
220' FNL
239' FEL
LAT-40.43548°N
LONG-104.88799°W
PDOP: 1.0
ELEV: 4775'

⑧

PAVISTMA 4-23
NW1/4NW1/4
528' FNL
475' FWL
LAT-40.43007°N
LONG-104.90434°W
PDOP: 4.0
ELEV: 4868'

⑭

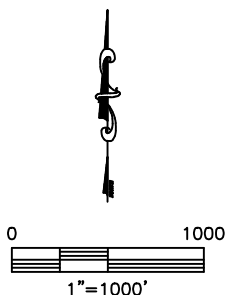
FRYE FARMS 9-7-32
SE1/4SE1/4
1162' FSL
1114' FEL
LAT-40.43920°N
LONG-104.91043°W
PDOP: 1.1
ELEV: 4881'

⑮

FRYE FARMS 9-5-32
SE1/4SE1/4
1175' FSL
1122' FEL
LAT-40.43923°N
LONG-104.91047°W
PDOP: 1.1
ELEV: 4881'

⑯

FRYE FARMS 7-5-32
SE1/4SE1/4
1186' FSL
1129' FEL
LAT-40.43927°N
LONG-104.91051°W
PDOP: 1.6
ELEV: 4881'



DATE: 9/28/2012
PROJECT#: 2011315