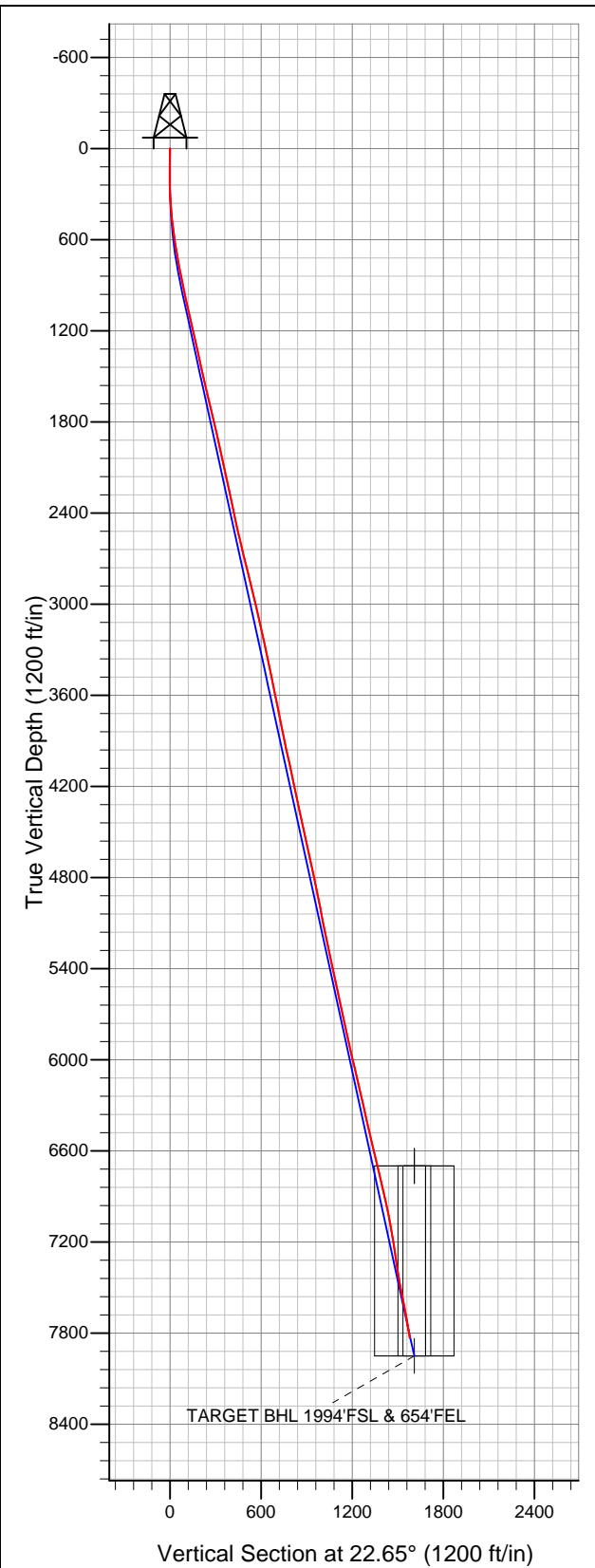


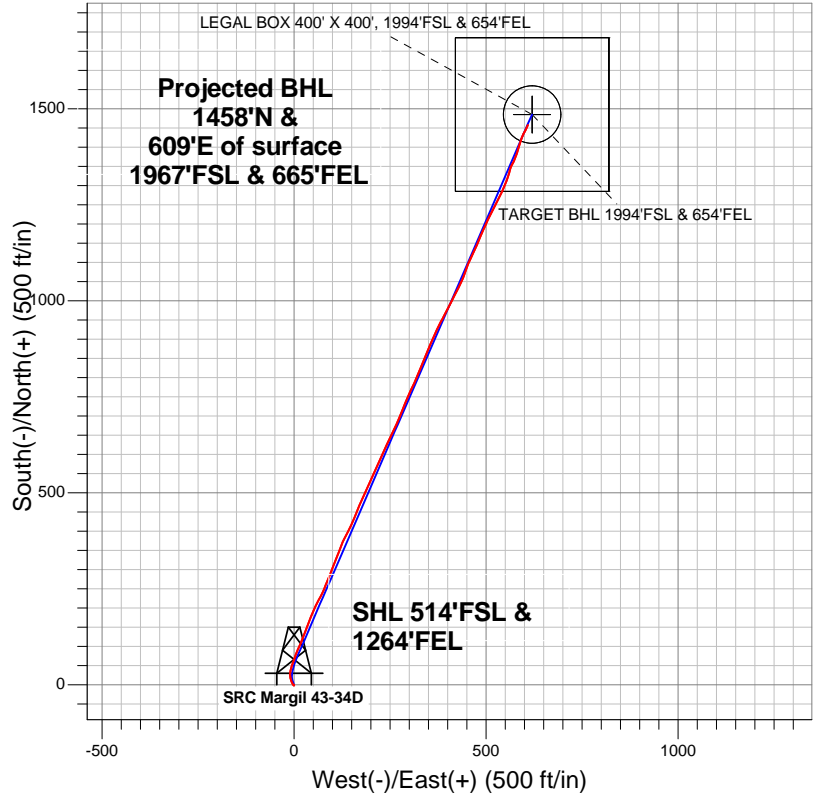
# Well Name: SRC Margil 43-34D

Surface Location: SRC Margil 34-34D Pad Sec.34-T4N-R68W  
 North American Datum 1983 US State Plane 1983Colorado Northern Zone  
 Ground Elevation: 5091.0




+N/-S	+E/-W	Northing	Easting	Latitude	Longitude	Slot
0.0	0.0	1339447.16	3143888.81	40.264033	-104.984394	
Original Well Elev		WELL @ 5104.0ft (Original Well Elev)				



## Synergy Resources



### LEGEND

-  Wellbore #1
-  SRC Margil 43-34D, Wellbore #1, Plan #2 (6-25-12) R V0
-  Survey #1

## Final Survey Plot

Projected Final Survey -  
 8000'MD & 7832'TVD @ 1580'VS  
 10.10 deg Inc 24.50 deg AZ

Project: SEC.34-T4N-R68W  
 Site: SRC Margil 34-34D Pad Sec.34-T4N-R68W  
 Well: SRC Margil 43-34D  
 Plan: Wellbore #1



## **Synergy Resources**

**SEC.34-T4N-R68W**

**SRC Margil 34-34D Pad Sec.34-T4N-R68W**

**SRC Margil 43-34D**

**Wellbore #1**

**Survey: Survey #1**

## **Standard Survey Report**

**05 July, 2012**

<b>Company:</b>	Synergy Resources	<b>Local Co-ordinate Reference:</b>	Well SRC Margil 43-34D
<b>Project:</b>	SEC.34-T4N-R68W	<b>TVD Reference:</b>	WELL @ 5104.0ft (Original Well Elev)
<b>Site:</b>	SRC Margil 34-34D Pad Sec.34-T4N-R68W	<b>MD Reference:</b>	WELL @ 5104.0ft (Original Well Elev)
<b>Well:</b>	SRC Margil 43-34D	<b>North Reference:</b>	True
<b>Wellbore:</b>	Wellbore #1	<b>Survey Calculation Method:</b>	Minimum Curvature
<b>Design:</b>	Wellbore #1	<b>Database:</b>	Landmark

<b>Project</b>	SEC.34-T4N-R68W, Weld County, Colorado		
<b>Map System:</b>	US State Plane 1983	<b>System Datum:</b>	Mean Sea Level
<b>Geo Datum:</b>	North American Datum 1983		Using Well Reference Point
<b>Map Zone:</b>	Colorado Northern Zone		Using geodetic scale factor

Site		SRC Margil 34-34D Pad Sec.34-T4N-R68W			
Site Position:		Northing:		1,339,412.39ft	
From:	Lat/Long	Easting:		Longitude:	
		3,143,817.01ft		-104.984652	
Position Uncertainty:		Slot Radius:		Grid Convergence:	
0.0 ft		"		0.33 °	

Well	SRC Margil 43-34D					
Well Position	+N/-S	0.0 ft	Northing:	1,339,447.16 ft	Latitude:	40.264033
	+E/-W	0.0 ft	Easting:	3,143,888.81 ft	Longitude:	-104.984394
Position Uncertainty		0.0 ft	Wellhead Elevation:	ft	Ground Level:	5,091.0 ft

Wellbore	Wellbore #1				
Magnetics	Model Name	Sample Date	Declination (°)	Dip Angle (°)	Field Strength (nT)
	IGRF2010	6/22/2012	8.83	66.87	52,927

Design	Wellbore #1				
Audit Notes:					
Version:	1.0	Phase:	ACTUAL	Tie On Depth:	0.0
Vertical Section:	Depth From (TVD) (ft)	+N/-S (ft)	+E/-W (ft)	Direction (°)	
	0.0	0.0	0.0	22.65	

Survey Program		Date	7/5/2012		
From (ft)	To (ft)	Survey (Wellbore)	Tool Name	Description	
124.0	8,000.0	Survey #1 (Wellbore #1)	MWD	MWD - Standard	

Survey	Wellbore Data									
	Measured Depth (ft)	Inclination (°)	Azimuth (°)	Vertical Depth (ft)	+N/-S (ft)	+E/-W (ft)	Vertical Section (ft)	Dogleg Rate (°/100ft)	Build Rate (°/100ft)	Turn Rate (°/100ft)
Main Survey	0.0	0.00	0.00	0.0	0.0	0.0	0.0	0.00	0.00	0.00
	124.0	1.00	179.30	124.0	-1.1	0.0	-1.0	0.81	0.81	0.00
	215.0	1.70	301.70	215.0	-1.2	-1.1	-1.5	2.63	0.77	134.51
	308.0	5.10	333.50	307.8	3.3	-4.1	1.4	4.05	3.66	34.19
	400.0	6.20	341.20	399.4	11.6	-7.6	7.8	1.45	1.20	8.37
	492.0	7.10	350.00	490.7	21.9	-10.2	16.3	1.48	0.98	9.57
	583.0	8.70	13.00	580.9	34.2	-9.6	27.8	3.86	1.76	25.27
	673.0	9.30	17.40	669.8	47.7	-5.9	41.8	1.01	0.67	4.89
	764.0	10.30	18.30	759.5	62.5	-1.1	57.2	1.11	1.10	0.99
	856.0	10.70	21.00	849.9	78.3	4.5	74.0	0.69	0.43	2.93
	959.0	12.80	22.90	950.8	97.7	12.4	94.9	2.07	2.04	1.84
	1,001.0	12.80	22.90	991.7	106.3	16.0	104.2	0.00	0.00	0.00
	1,044.0	13.00	23.20	1,033.6	115.1	19.8	113.8	0.49	0.47	0.70

<b>Company:</b>	Synergy Resources	<b>Local Co-ordinate Reference:</b>	Well SRC Margil 43-34D
<b>Project:</b>	SEC.34-T4N-R68W	<b>TVD Reference:</b>	WELL @ 5104.0ft (Original Well Elev)
<b>Site:</b>	SRC Margil 34-34D Pad Sec.34-T4N-R68W	<b>MD Reference:</b>	WELL @ 5104.0ft (Original Well Elev)
<b>Well:</b>	SRC Margil 43-34D	<b>North Reference:</b>	True
<b>Wellbore:</b>	Wellbore #1	<b>Survey Calculation Method:</b>	Minimum Curvature
<b>Design:</b>	Wellbore #1	<b>Database:</b>	Landmark

Survey										
Measured Depth (ft)	Inclination (°)	Azimuth (°)	Vertical Depth (ft)	+N/-S (ft)	+E/-W (ft)	Vertical Section (ft)	Dogleg Rate (°/100ft)	Build Rate (°/100ft)	Turn Rate (°/100ft)	
1,138.0	12.70	21.10	1,125.3	134.5	27.6	134.7	0.59	-0.32	-2.23	
1,231.0	13.50	21.70	1,215.9	154.1	35.3	155.8	0.87	0.86	0.65	
1,325.0	12.40	18.70	1,307.5	173.8	42.6	176.9	1.37	-1.17	-3.19	
1,419.0	11.70	24.80	1,399.4	192.1	49.9	196.5	1.54	-0.74	6.49	
1,512.0	13.50	28.30	1,490.2	210.2	59.0	216.7	2.10	1.94	3.76	
1,606.0	12.80	26.40	1,581.7	229.2	68.8	238.0	0.88	-0.74	-2.02	
1,700.0	13.80	22.90	1,673.2	248.8	77.8	259.6	1.37	1.06	-3.72	
1,793.0	12.60	21.80	1,763.7	268.5	85.9	280.8	1.32	-1.29	-1.18	
1,887.0	12.80	22.70	1,855.4	287.6	93.7	301.5	0.30	0.21	0.96	
1,981.0	13.30	21.00	1,947.0	307.3	101.6	322.7	0.67	0.53	-1.81	
2,075.0	13.00	21.10	2,038.5	327.2	109.3	344.1	0.32	-0.32	0.11	
2,168.0	12.00	22.20	2,129.3	346.0	116.7	364.2	1.11	-1.08	1.18	
2,262.0	11.30	19.60	2,221.4	363.7	123.5	383.2	0.93	-0.74	-2.77	
2,356.0	11.70	27.50	2,313.5	380.8	131.0	401.9	1.73	0.43	8.40	
2,449.0	12.40	28.20	2,404.4	398.0	140.0	421.2	0.77	0.75	0.75	
2,543.0	12.80	24.50	2,496.2	416.3	149.1	441.7	0.96	0.43	-3.94	
2,637.0	13.60	22.20	2,587.7	436.1	157.6	463.1	1.02	0.85	-2.45	
2,731.0	13.90	20.80	2,679.0	456.8	165.8	485.5	0.48	0.32	-1.49	
2,824.0	13.40	25.20	2,769.4	477.0	174.4	507.4	1.24	-0.54	4.73	
2,918.0	14.00	25.70	2,860.7	497.1	183.9	529.6	0.65	0.64	0.53	
3,012.0	13.50	23.40	2,952.0	517.5	193.2	552.0	0.79	-0.53	-2.45	
3,105.0	13.30	23.20	3,042.5	537.2	201.7	573.5	0.22	-0.22	-0.22	
3,199.0	12.80	24.10	3,134.1	556.7	210.3	594.7	0.57	-0.53	0.96	
3,293.0	11.90	23.20	3,225.9	575.1	218.3	614.8	0.98	-0.96	-0.96	
3,387.0	12.50	25.00	3,317.8	593.2	226.4	634.7	0.76	0.64	1.91	
3,480.0	11.30	24.70	3,408.8	610.6	234.5	653.8	1.29	-1.29	-0.32	
3,574.0	11.80	26.80	3,500.8	627.6	242.7	672.6	0.69	0.53	2.23	
3,668.0	11.90	25.90	3,592.8	644.9	251.3	691.9	0.22	0.11	-0.96	
3,761.0	11.40	25.40	3,683.9	661.8	259.4	710.6	0.55	-0.54	-0.54	
3,855.0	11.30	23.40	3,776.1	678.6	267.0	729.1	0.43	-0.11	-2.13	
3,949.0	11.90	22.70	3,868.2	696.0	274.4	748.0	0.66	0.64	-0.74	
4,043.0	12.00	22.40	3,960.1	714.0	281.9	767.5	0.13	0.11	-0.32	
4,136.0	12.00	21.30	4,051.1	732.0	289.1	786.8	0.25	0.00	-1.18	
4,230.0	11.70	23.60	4,143.1	749.8	296.5	806.1	0.60	-0.32	2.45	
4,324.0	12.10	25.40	4,235.1	767.4	304.5	825.5	0.58	0.43	1.91	
4,417.0	12.60	23.60	4,325.9	785.5	312.7	845.4	0.68	0.54	-1.94	
4,511.0	12.80	24.10	4,417.6	804.4	321.1	866.0	0.24	0.21	0.53	
4,605.0	12.10	23.10	4,509.4	823.0	329.2	886.3	0.78	-0.74	-1.06	
4,698.0	12.00	19.70	4,600.4	841.1	336.3	905.7	0.77	-0.11	-3.66	
4,792.0	11.70	21.30	4,692.4	859.1	343.0	925.0	0.47	-0.32	1.70	
4,886.0	12.80	24.80	4,784.2	877.5	350.9	944.9	1.41	1.17	3.72	
4,980.0	12.00	23.60	4,876.0	895.9	359.2	965.1	0.89	-0.85	-1.28	
5,073.0	11.50	25.10	4,967.1	913.1	367.0	984.0	0.63	-0.54	1.61	
5,167.0	10.00	25.40	5,059.4	929.0	374.4	1,001.5	1.60	-1.60	0.32	
5,261.0	11.20	26.40	5,151.8	944.6	382.0	1,018.8	1.29	1.28	1.06	
5,354.0	12.50	28.70	5,242.8	961.5	390.8	1,037.8	1.49	1.40	2.47	
5,448.0	11.90	26.90	5,334.7	979.0	400.1	1,057.6	0.76	-0.64	-1.91	
5,542.0	12.80	28.00	5,426.5	996.9	409.4	1,077.6	0.99	0.96	1.17	
5,636.0	12.10	25.70	5,518.3	1,014.9	418.6	1,097.9	0.91	-0.74	-2.45	
5,730.0	12.20	27.60	5,610.2	1,032.6	427.4	1,117.6	0.44	0.11	2.02	
5,823.0	12.10	24.30	5,701.1	1,050.2	436.0	1,137.1	0.75	-0.11	-3.55	
5,917.0	12.00	18.70	5,793.1	1,068.5	443.2	1,156.7	1.25	-0.11	-5.96	
6,011.0	12.60	20.60	5,884.9	1,087.3	449.9	1,176.7	0.77	0.64	2.02	
6,105.0	13.50	25.20	5,976.5	1,106.8	458.2	1,197.9	1.46	0.96	4.89	

<b>Company:</b>	Synergy Resources	<b>Local Co-ordinate Reference:</b>	Well SRC Margil 43-34D
<b>Project:</b>	SEC.34-T4N-R68W	<b>TVD Reference:</b>	WELL @ 5104.0ft (Original Well Elev)
<b>Site:</b>	SRC Margil 34-34D Pad Sec.34-T4N-R68W	<b>MD Reference:</b>	WELL @ 5104.0ft (Original Well Elev)
<b>Well:</b>	SRC Margil 43-34D	<b>North Reference:</b>	True
<b>Wellbore:</b>	Wellbore #1	<b>Survey Calculation Method:</b>	Minimum Curvature
<b>Design:</b>	Wellbore #1	<b>Database:</b>	Landmark

Survey									
Measured Depth (ft)	Inclination (°)	Azimuth (°)	Vertical Depth (ft)	+N/-S (ft)	+E/-W (ft)	Vertical Section (ft)	Dogleg Rate (°/100ft)	Build Rate (°/100ft)	Turn Rate (°/100ft)
6,198.0	13.50	25.40	6,066.9	1,126.5	467.5	1,219.6	0.05	0.00	0.22
6,292.0	12.60	23.90	6,158.5	1,145.7	476.3	1,240.8	1.02	-0.96	-1.60
6,386.0	13.30	22.00	6,250.1	1,165.1	484.5	1,261.9	0.87	0.74	-2.02
6,480.0	12.00	24.10	6,341.8	1,184.1	492.6	1,282.5	1.47	-1.38	2.23
6,573.0	13.40	25.20	6,432.5	1,202.7	501.1	1,302.9	1.53	1.51	1.18
6,667.0	12.90	25.20	6,524.1	1,222.0	510.2	1,324.3	0.53	-0.53	0.00
6,761.0	13.70	26.80	6,615.6	1,241.4	519.7	1,345.8	0.94	0.85	1.70
6,855.0	13.70	27.10	6,706.9	1,261.3	529.8	1,368.0	0.08	0.00	0.32
6,903.2	13.18	26.75	6,753.8	1,271.3	534.9	1,379.2	1.09	-1.08	-0.73
TARGET CIRCLE 1994'FSL & 654'FEL - LEGAL BOX 400' X 400', 1994'FSL & 654'FEL									
6,948.0	12.70	26.40	6,797.4	1,280.3	539.4	1,389.2	1.09	-1.07	-0.78
7,042.0	12.40	23.80	6,889.2	1,298.7	548.0	1,409.6	0.68	-0.32	-2.77
7,136.0	12.70	18.10	6,980.9	1,317.8	555.3	1,430.0	1.36	0.32	-6.06
7,230.0	11.20	15.20	7,072.9	1,336.4	560.9	1,449.4	1.72	-1.60	-3.09
7,323.0	9.30	22.70	7,164.4	1,352.1	566.2	1,465.8	2.49	-2.04	8.06
7,417.0	7.20	31.70	7,257.4	1,364.1	572.2	1,479.3	2.62	-2.23	9.57
7,511.0	9.20	18.50	7,350.5	1,376.2	577.7	1,492.6	2.91	2.13	-14.04
7,604.0	10.50	15.30	7,442.1	1,391.5	582.3	1,508.4	1.52	1.40	-3.44
7,698.0	10.70	18.10	7,534.5	1,408.0	587.3	1,525.6	0.59	0.21	2.98
7,792.0	10.90	20.10	7,626.8	1,424.7	593.0	1,543.2	0.45	0.21	2.13
7,886.0	10.00	30.30	7,719.3	1,440.1	600.2	1,560.1	2.18	-0.96	10.85
7,958.0	10.10	24.50	7,790.2	1,451.2	606.0	1,572.6	1.41	0.14	-8.06
8,000.0	10.10	24.50	7,831.5	1,457.9	609.0	1,580.0	0.00	0.00	0.00
TARGET BHL 1994'FSL & 654'FEL									

Checked By: _____	Approved By: _____	Date: _____
-------------------	--------------------	-------------