

## The Road to Excellence Starts with Safety

Sold To #: 304535	Ship To #: 2270029	Quote #:	Sales Order #: 9702147
Customer: PDC ENERGY EBUS		Customer Rep: SAILORS, CHAD	
Well Name: Hoff	Well #: 33-6	API/UWI #: 05-123-21304	
Field: WATTENBERG	City (SAP): GREELEY	County/Parish: Weld	State: Colorado
Lat: N 40.426 deg. OR N 40 deg. 25 min. 32.765 secs.		Long: E 104.59 deg. OR E 104 deg. 35 min. 24.288 secs.	
Job Purpose: Recement Service			
Well Type: Development Well		Job Type: Recement Service	
Sales Person: AARON, WESLEY		Srv Supervisor: SNYDER, JONATHAN MBU ID Emp #: 435616	

### Job Personnel

HES Emp Name	Exp Hrs	Emp #	HES Emp Name	Exp Hrs	Emp #	HES Emp Name	Exp Hrs	Emp #
KUNERT, RANDY Joe	4.0	477850	SANSONI, NICHOLAS Sterling J	4.0	502962	SMITH, AARON David	4.0	518187
SNYDER, JONATHAN Leroy	4.0	435616						

### Equipment

HES Unit #	Distance-1 way	HES Unit #	Distance-1 way	HES Unit #	Distance-1 way	HES Unit #	Distance-1 way
10246780C	35 mile	10248053C	35 mile	11362287C	35 mile	11518548	35 mile
11562544C	35 mile						

### Job Hours

Date	On Location Hours	Operating Hours	Date	On Location Hours	Operating Hours	Date	On Location Hours	Operating Hours
7/30/2012	4	2.5						
TOTAL			Total is the sum of each column separately					

### Job

### Job Times

Formation Name	Formation Depth (MD)	Top	Bottom	Called Out	Date	Time	Time Zone
Form Type				On Location	30 - Jul - 2012	04:00	MST
Job depth MD	3230. ft			Job Started	30 - Jul - 2012	07:00	MST
Water Depth				Job Completed	30 - Jul - 2012	08:00	MST
Perforation Depth (MD)	From		To	Job Completed	30 - Jul - 2012	10:21	MST
				Departed Loc	30 - Jul - 2012	11:00	MST

### Well Data

Description	New / Used	Max pressure psig	Size in	ID in	Weight lbm/ft	Thread	Grade	Top MD ft	Bottom MD ft	Top TVD ft	Bottom TVD ft
1 1/4" Tubing	Unknown								3222.		
Open Hole Section				8.					3150.		3150.
Production Casing	Used		4.5	4.052	10.5		P-110		7336.		7336.
Surface Casing	Used		8.625	8.097	24.		J-55		366.		451.

### Tools and Accessories

Type	Size	Qty	Make	Depth	Type	Size	Qty	Make	Depth	Type	Size	Qty	Make
Guide Shoe					Packer					Top Plug			
Float Shoe					Bridge Plug					Bottom Plug			
Float Collar					Retainer					SSR plug set			
Insert Float										Plug Container			
Stage Tool										Centralizers			

### Miscellaneous Materials

Gelling Agt	Conc	Surfactant	Conc	Acid Type	Qty	Conc	%
Treatment Fld	Conc	Inhibitor	Conc	Sand Type	Size	Qty	

### Fluid Data

Stage/Plug #: 1

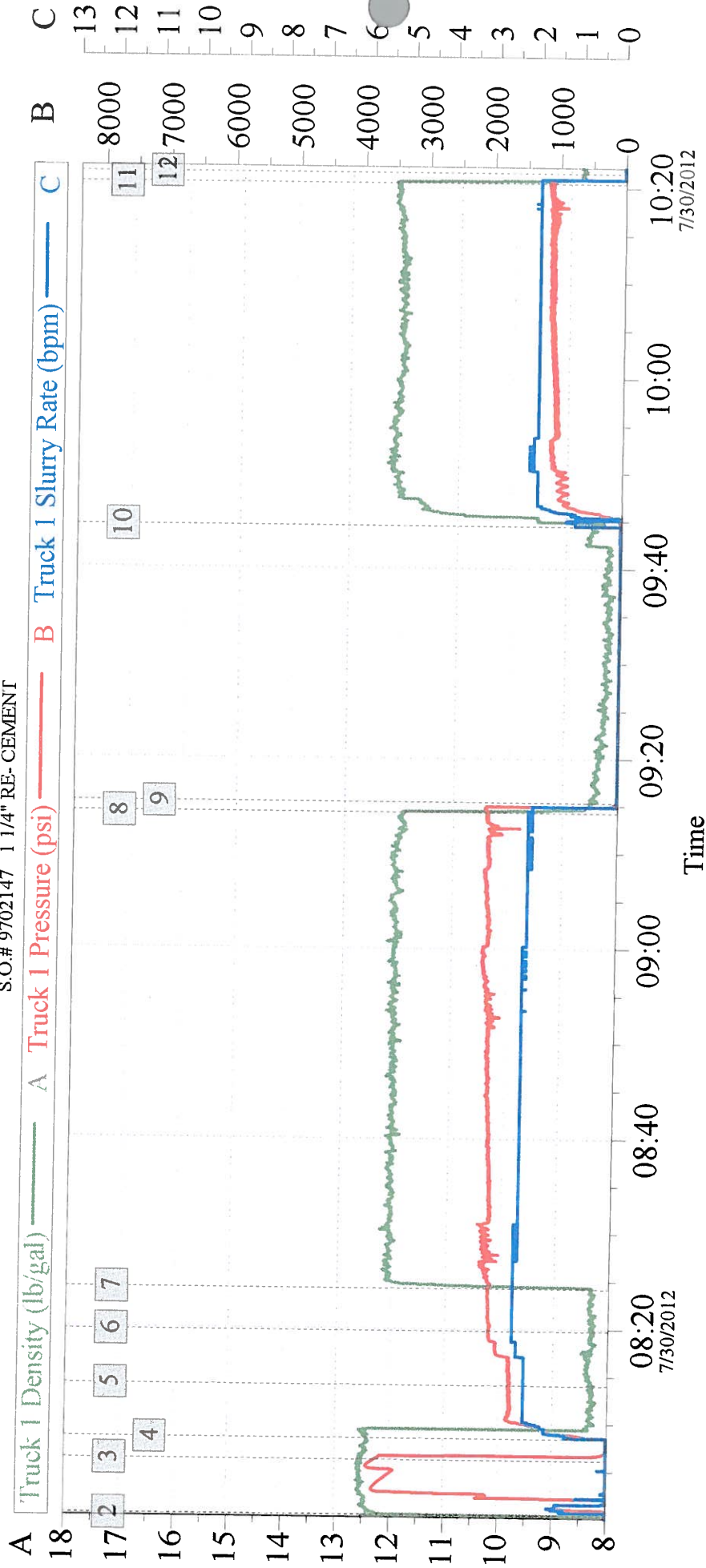
Fluid #	Stage Type	Fluid Name	Qty	Qty uom	Mixing Density lbm/gal	Yield ft <sup>3</sup> /sk	Mix Fluid Gal/sk	Rate bbl/min	Total Mix Fluid Gal/sk
1	ClayWeb Water Spacer		10	bbl	8.33	.0	.0	2.0	
2	MUD FLUSH III	MUD FLUSH III - SBM (528788)	12	bbl	8.4	.0	.0	2.0	
3	ClayWeb Water Spacer		10	bbl	8.33	.0	.0	2.0	
59.525 gal/Mgal		CLA-WEB - TOTE (101985045)							
4	Varicem 12#	VARICEM (TM) CEMENT (452009)	500	sacks	12.	2.18	12.34	2.0	12.34
12.34 Gal		FRESH WATER							
<b>Calculated Values</b>		<b>Pressures</b>		<b>Volumes</b>					
Displacement	2.5	Shut In: Instant		Lost Returns		Cement Slurry	161	Pad	
Top Of Cement	0	5 Min		Cement Returns	21	Actual Displacement	2.5	Treatment	
Frac Gradient		15 Min		Spacers	32	Load and Breakdown		Total Job	
<b>Rates</b>									
Circulating	2	Mixing		2	Displacement	2	Avg. Job		2
Cement Left In Pipe	Amount	0 ft	Reason	Shoe Joint					
Frac Ring # 1 @	ID	Frac ring # 2 @	ID	Frac Ring # 3 @	ID	Frac Ring # 4 @	ID		
The Information Stated Herein Is Correct				Customer Representative Signature					





## Cementing Job Log

Activity Description	Date/Time	Cht #	Rate bbl/ min	Volume bbl		Pressure psig		Comments
				Stage	Total	Tubing	Casing	
End Job	07/30/2012 10:21							WE GOT 21 BBLS OF CEMENT BACK TO SURFACE. WE DID NOT MIX ALL THE CEMENT SO WE BROUGHT 83 SKS BACK TO THE YARD
Pre-Rig Down Safety Meeting	07/30/2012 10:25							HELD SAFETY MEETING WITH ALL EMPLOYEES PRIOR TO RIGGING DOWN AND DISCUSSED ALL HAZARDS WHILE RIGGING DOWN EQUIPMENT.
Depart Location for Service Center or Other Site	07/30/2012 11:00							HELD SAFETY MEETING PRIOR TO LEAVING LOCATION AND DISCUSSED ALL POTENTIAL HAZARDS WHILE DRIVING BACK TO THE SERVICE CENTER.



Global Event Log				
Intersection	TID	TIP	Intersection	TID
2 Start Job	08:00:23	7.336	3 Test Lines	08:06:13 12.56
4 Pump 10 BBL Clay-Web Spacer	08:08:27	12.42	5 Pump 12 BBL Mud-Flush Spacer	08:14:05 8.249
6 Pump 10 BBL Clay-Web Spacer	08:19:48	8.250	7 Pump Cement @ 12 #	08:24:11 8.317
8 Pump Displacement	09:14:16	11.89	9 Shutdown	09:15:19 8.520
10 Pump Cement @ 12 #	09:44:24	8.530	11 Pump Displacement	10:20:27 12.13
12 End Job	10:21:31	8.760		1150